

1998

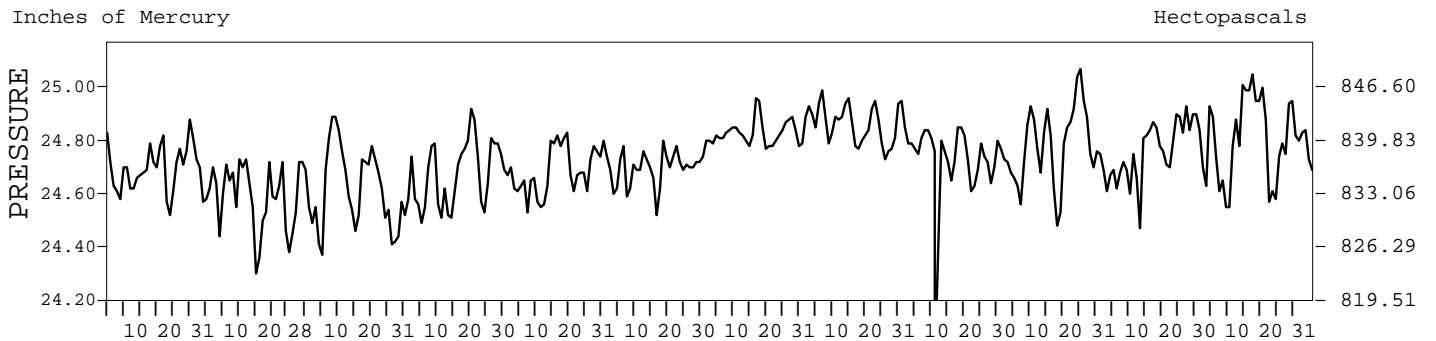
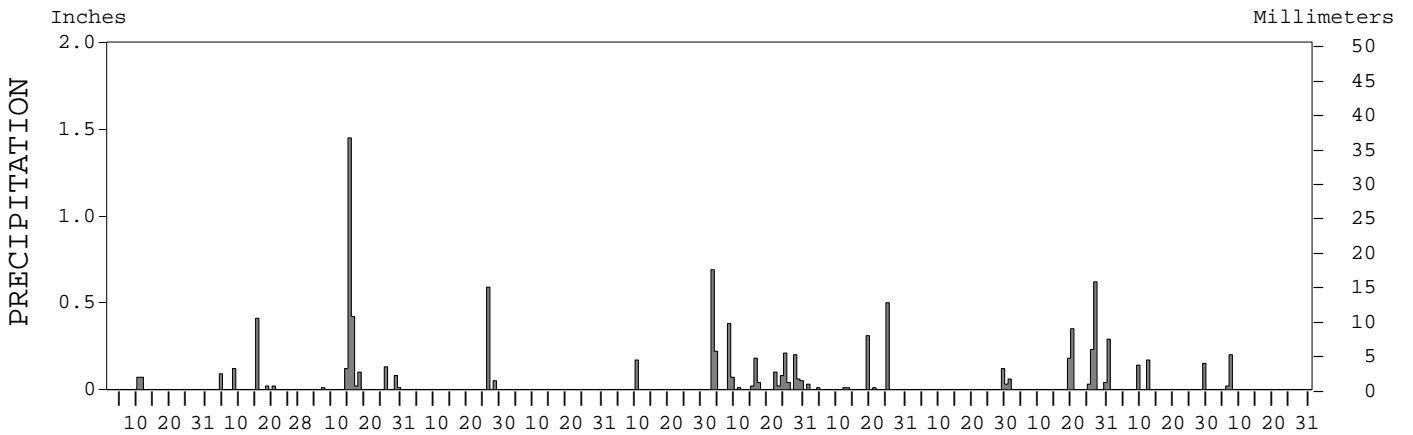
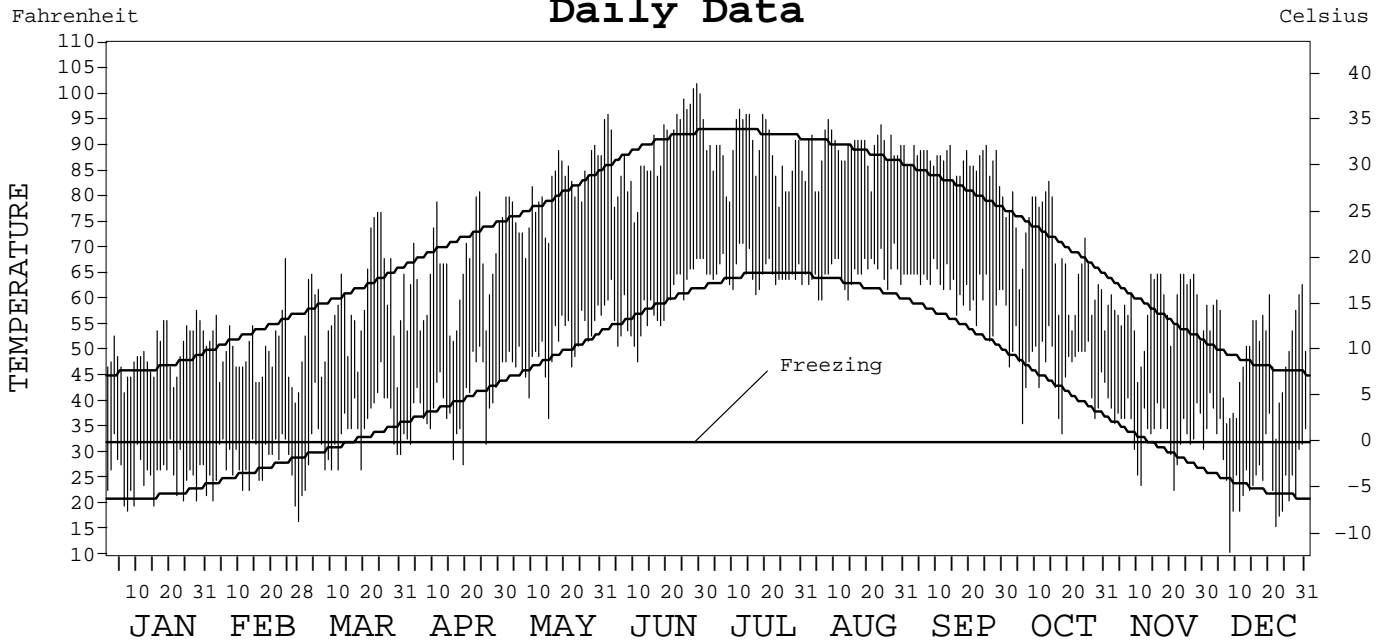
LOCAL CLIMATOLOGICAL DATA
ANNUAL SUMMARY WITH COMPARATIVE DATA



ISSN 0198-3482

ALBUQUERQUE,
NEW MEXICO (ABQ)

Daily Data



I CERTIFY THAT THIS IS AN OFFICIAL PUBLICATION OF THE NATIONAL OCEANIC AND ATMOSPHERIC ADMINISTRATION, AND IS COMPILED FROM RECORDS ON FILE AT THE NATIONAL CLIMATIC DATA CENTER.

Thomas R. Karl

NATIONAL OCEANIC AND ATMOSPHERIC ADMINISTRATION
 NATIONAL ENVIRONMENTAL AND INFORMATION SERVICE
 NATIONAL ENVIRONMENTAL AND INFORMATION SERVICE
 NATIONAL CLIMATIC DATA CENTER
 NATIONAL CLIMATIC DATA CENTER
 DIRECTOR NATIONAL CLIMATIC DATA CENTER
 ASHEVILLE, NORTH CAROLINA

METEOROLOGICAL DATA FOR 1998

ALBUQUERQUE, NM (ABQ)

LATITUDE: 35° 02' 32" N LONGITUDE: 106° 36' 23" W ELEVATION (FT): GRND: 5311 BARO: 5313 TIME ZONE: MOUNTAIN (UTC+ 7) WBAN: 23050

ELEMENT		JAN	FEB	MAR	APR	MAY	JUN	JUL	AUG	SEP	OCT	NOV	DEC	YEAR	
TEMPERATURE °F	MEAN DAILY MAXIMUM	49.9	49.7	59.2	65.0	80.7	89.8	88.8	89.1	86.8	69.0	58.4	50.1	69.7	
	HIGHEST DAILY MAXIMUM	58	68	77	81	90	102	97	95	90	83	65	63	102	
	DATE OF OCCURRENCE	28	24	25+	24	29	29	12	08	25+	14	27+	30	JUN 29	
	MEAN DAILY MINIMUM	25.8	27.9	34.2	39.4	50.5	58.9	65.4	65.1	61.9	46.8	34.6	26.8	44.8	
	LOWEST DAILY MINIMUM	19	17	22	28	37	48	61	60	52	34	23	11	11	
	DATE OF OCCURRENCE	07	28	01	19	15	11	17	14+	26	18	21	08	DEC 08	
	AVERAGE DRY BULB	37.9	38.8	46.7	52.2	65.6	74.4	77.1	77.1	74.4	57.9	46.5	38.5	57.3	
	MEAN WET BULB	31.7	32.4	36.8	39.5	46.7	51.7	62.7	60.7	47.2	38.7	31.6			
	MEAN DEW POINT	21.5	22.3	23.5	22.5	24.6	28.5	54.6	50.3		36.1	28.8	20.8		
	NUMBER OF DAYS WITH:														
	MAXIMUM ≥ 90°	0	0	0	0	1	16	15	19	3	0	0	0	0	54
	MAXIMUM ≤ 32°	0	0	0	0	0	0	0	0	0	0	0	0	0	0
MINIMUM ≤ 32°	29	23	13	4	0	0	0	0	0	0	9	23	101		
MINIMUM ≤ 0°	0	0	0	0	0	0	0	0	0	0	0	0	0		
H/C	HEATING DEGREE DAYS	834	727	558	376	51	4	0	0	0	225	549	816	4140	
	COOLING DEGREE DAYS	0	0	0	1	78	292	383	383	288	11	0	0	1436	
RH	MEAN (PERCENT)	55	55	46	35	23	20	52	43	35	52	55	53	44	
	HOUR 05 LST	73	72	60	52	37	31	69	60	50	64	71	67	59	
	HOUR 11 LST	50	50	40	31	19	17	43	37	31	46	50	47	38	
	HOUR 17 LST	38	36	32	19	13	12	40	29	23	39	38	38	30	
	HOUR 23 LST	57	59	47	37	23	21	59	46	38	55	58	56	46	
S	PERCENT POSSIBLE SUNSHINE	67	62	70	84	92	95	73	82	82	72	75	86	78	
W/O	NUMBER OF DAYS WITH:														
	HEAVY FOG (VISBY ≤ 1/4 MI)	1	1	1	0	0	0	0	0	0	0	1	1	5	
	THUNDERSTORMS	0	0	3	1	0	0	20	9	2	2	1	0	38	
CLOUDINESS	SUNRISE-SUNSET: (OKTAS)														
	CEILOMETER (≤ 12,000 FT.)														
	SATELLITE (> 12,000 FT.)														
	MIDNIGHT-MIDNIGHT: (OKTAS)														
	CEILOMETER (≤ 12,000 FT.)														
SATELLITE (> 12,000 FT.)															
NUMBER OF DAYS WITH:															
CLEAR															
PARTLY CLOUDY															
CLOUDY															
PR	MEAN STATION PRESS. (IN.)	24.69	24.59	24.62	24.67	24.69	24.70	24.83	24.86		24.77	24.77	24.80		
	MEAN SEA-LEVEL PRESS. (IN.)		29.86	29.85	29.86	29.80	29.76	29.92	29.95		29.95	30.03	30.12		
WINDS	RESULTANT SPEED (MPH)	1.6	1.9	1.4	2.4	2.8	1.8	1.5	2.3		1.3	0.8	0.5		
	RES. DIR. (TENS OF DEGS.)	33	30	25	25	19	17	13	10		13	33	03		
	MEAN SPEED (MPH)	5.5	8.2	8.6	9.3	8.7	9.9	7.7	8.3	8.0	8.7	5.7	7.0	8.0	
	PREVAIL. DIR. (TENS OF DEGS.)	35	33	34	36	18	26	10	10	12	10	01	01	36	
	MAXIMUM 2-MINUTE WIND:														
	SPEED (MPH)	26	45	43	39	38	37	39	39	33	36	34	31	45	
	DIR. (TENS OF DEGS.)	29	17	18	26	20	09	10	09	09	26	29	18	17	
	DATE OF OCCURRENCE	25	24	26	12+	20	30	15	11	30	27	09	19	FEB 24	
	MAXIMUM 5-SECOND WIND:														
	SPEED (MPH)	30	53	53	46	54	46	48	43	48	48	43	44	54	
DIR. (TENS OF DEGS.)	29	18	18	26	21	22	11	29	24	26	28	08	21		
DATE OF OCCURRENCE	25	24	26	12+	20	07	15	25+	17	27	09	09	MAY 20		
PRECIPITATION	WATER EQUIVALENT:														
	TOTAL (IN.)	0.14	0.66	2.34	0.64	T	0.17	2.37	0.88	0.15	1.80	0.46	0.22	9.83	
	GREATEST 24-HOUR (IN.)	0.14	0.41	1.45	0.59	T	0.17	0.91	0.50	0.15	0.79	0.17	0.22	1.45	
	DATE OF OCCURRENCE	10-11	15	15	26	20+	10	03-04	25	29-30	26-27	12	06-07	MAR 15	
	NUMBER OF DAYS WITH:														
	PRECIPITATION ≥ 0.01	2	5	9	2	0	1	16	7	2	8	3	2	57	
PRECIPITATION ≥ 0.10	0	2	5	1	0	1	7	2	1	5	3	1	28		
PRECIPITATION ≥ 1.00	0	0	1	0	0	0	0	0	0	0	0	0	1		
SNOWFALL	SNOW, ICE PELLETS, HAIL:														
	TOTAL (IN.)	0.2	1.0	0.9	0.4	0.0	0.0	T	0.0	0.0	0.0	1.3	2.7	6.5	
	GREATEST 24-HOUR (IN.)	0.2	0.4	0.8	0.4	0.0	0.0	T	0.0	0.0	0.0	1.3	2.7	2.7	
	DATE OF OCCURRENCE	10	15+	29	26	0	0	03	0	0	0	09	06-07	DEC 06-07	
	MAXIMUM SNOW DEPTH (IN.)	T	T	0	0	0	0	0	0	0	0	0	3	3	
	DATE OF OCCURRENCE	10	05									07	07	DEC 07	
NUMBER OF DAYS WITH:															
SNOWFALL ≥ 1.0	0	0	0	0	0	0	0	0	0	0	1	1	2		

NORMALS, MEANS, AND EXTREMES

ALBUQUERQUE, NM (ABQ)

LATITUDE: 35° 02' 32" N LONGITUDE: 106° 36' 23" W ELEVATION (FT): GRND: 5311 BARO: 5313 TIME ZONE: MOUNTAIN (UTC+ 7) WBAN: 23050

		POR	JAN	FEB	MAR	APR	MAY	JUN	JUL	AUG	SEP	OCT	NOV	DEC	YEAR
TEMPERATURE °F	NORMAL DAILY MAXIMUM	30	46.8	53.5	61.4	70.8	79.7	90.0	92.5	89.0	81.9	71.0	57.3	47.5	70.1
	MEAN DAILY MAXIMUM	51	47.2	53.4	61.0	70.6	79.9	90.1	92.3	89.5	82.9	71.4	57.1	47.8	70.3
	HIGHEST DAILY MAXIMUM	59	69	76	85	89	98	107	105	101	100	91	77	72	107
	YEAR OF OCCURRENCE		1994	1986	1971	1989	1951	1994	1980	1979	1979	1979	1975	1958	JUN 1994
	MEAN OF EXTREME MAXS.	51	60.8	67.5	75.4	83.5	91.1	99.5	99.9	96.4	92.5	83.4	70.4	60.9	81.8
	NORMAL DAILY MINIMUM	30	21.7	26.4	32.2	39.6	48.6	58.3	64.4	62.6	55.2	43.0	31.2	23.1	42.2
	MEAN DAILY MINIMUM	51	23.4	27.5	32.9	40.7	50.0	59.6	65.0	63.2	56.2	44.1	31.7	24.4	43.2
	LOWEST DAILY MINIMUM	59	-1.7	-5	8	19	28	40	52	50	37	21	-7	-7	-17
	YEAR OF OCCURRENCE		1971	1951	1948	1980	1975	1980	1985	1992	1971	1991	1976	1990	JAN 1971
	MEAN OF EXTREME MINS.	51	8.9	13.8	19.7	28.0	37.2	48.3	58.5	56.8	45.3	31.6	18.9	11.1	31.5
	NORMAL DRY BULB	30	34.2	40.0	46.9	55.2	64.2	74.2	78.5	75.9	68.6	57.0	44.3	35.3	56.2
	MEAN DRY BULB	51	35.4	40.5	47.0	55.6	64.8	74.9	78.7	76.3	69.4	57.8	44.4	36.1	56.7
	MEAN WET BULB	15	29.5	33.5	36.9	41.8	48.8	55.2	60.2	61.1	54.6	45.5	35.9	29.8	44.4
	MEAN DEW POINT	15	19.4	21.5	21.0	23.5	30.7	38.3	48.3	51.9	43.8	33.0	24.2	20.1	31.3
	NORMAL NO. DAYS WITH:														
MAXIMUM ≥ 90°	30	0.0	0.0	0.0	0.0	2.6	17.2	23.2	15.9	3.9	0.1	0.0	0.0	62.9	
MAXIMUM ≤ 32°	30	2.3	0.7	0.1	0.0	0.0	0.0	0.0	0.0	0.0	0.0	0.2	1.8	5.1	
MINIMUM ≤ 32°	30	29.0	22.6	15.8	4.5	0.2	0.0	0.0	0.0	0.0	2.0	16.1	28.5	118.7	
MINIMUM ≤ 0°	30	0.4	0.0	0.0	0.0	0.0	0.0	0.0	0.0	0.0	0.0	0.1	0.1	0.6	
H/C	NORMAL HEATING DEG. DAYS	30	955	700	561	301	89	0	0	0	18	259	621	921	4425
	NORMAL COOLING DEG. DAYS	30	0	0	0	7	64	279	419	338	126	11	0	0	1244
RH	NORMAL (PERCENT)	30	56	50	40	32	31	30	42	47	47	45	50	57	44
	HOUR 05 LST	30	70	65	56	49	48	46	60	66	66	62	65	70	60
	HOUR 11 LST	30	50	44	34	26	25	24	34	40	40	38	42	50	37
	HOUR 17 LST	30	40	32	24	19	18	18	27	30	31	30	36	43	29
	HOUR 23 LST	30	61	53	43	36	34	32	48	53	52	50	54	61	48
S	PERCENT POSSIBLE SUNSHINE	59	72	72	73	77	79	83	76	76	79	79	76	71	76
W/O	MEAN NO. DAYS WITH:														
	HEAVY FOG (VISBY ≤ 1/4 MI)	60	1.1	1.0	0.6	0.2	0.0	0.0	0.1	0.0	0.1	0.3	0.6	1.7	5.7
	THUNDERSTORMS	60	0.1	0.3	0.9	1.5	3.9	5.0	10.8	10.7	4.6	2.2	0.6	0.2	40.8
CLOUDINESS	MEAN:														
	SUNRISE-SUNSET (OKTAS)	57	3.9	4.1	4.1	3.7	3.4	2.7	3.5	3.5	2.8	2.8	3.1	3.6	3.4
	MIDNIGHT-MIDNIGHT (OKTAS)	32	3.5	3.8	3.6	3.2	3.1	2.7	3.7	3.7	2.9	2.6	2.9	3.3	3.2
	MEAN NO. DAYS WITH:														
	CLEAR	58	12.8	10.8	11.3	12.5	13.9	17.4	11.9	13.1	16.3	17.0	14.8	13.7	165.5
PARTLY CLOUDY	58	7.8	7.7	9.6	9.5	10.4	8.7	13.9	12.3	7.7	7.7	7.6	7.2	110.1	
CLOUDY	58	10.4	9.8	10.1	8.0	6.6	3.9	4.7	5.1	5.5	5.9	7.1	9.6	86.7	
PR	MEAN STATION PRESSURE (IN)	26	24.80	24.70	24.70	24.70	24.70	24.70	24.80	24.80	24.80	24.80	24.80	24.80	24.76
	MEAN SEA-LEVEL PRES. (IN)	14	30.12	30.02	29.92	29.85	29.81	29.82	29.88	29.92	29.93	29.98	30.04	30.12	29.95
WINDS	MEAN SPEED (MPH)	42	7.9	8.6	9.8	10.5	10.3	9.5	8.8	7.9	8.1	7.9	7.8	7.6	8.7
	PREVAIL. DIR (TENS OF DEGS)	27	36	36	36	36	18	09	10	09	10	36	36	36	36
	MAXIMUM 2-MINUTE:														
	SPEED (MPH)	2	40	45	43	41	47	44	40	39	33	41	34	51	51
	DIR. (TENS OF DEGS)		08	17	18	26	27	07	06	09	28	16	29	06	06
	YEAR OF OCCURRENCE		1997	1998	1998	1997	1997	1997	1997	1998	1997	1997	1998	1997	DEC 1997
	MAXIMUM 5-SECOND:														
SPEED (MPH)	2	46	53	53	49	56	52	49	46	48	49	43	57	57	
DIR. (TENS OF DEGS)		09	18	18	07	28	07	09	08	24	16	28	07	07	
YEAR OF OCCURRENCE		1997	1998	1998	1997	1997	1997	1997	1997	1998	1997	1998	1997	DEC 1997	
PRECIPITATION	NORMAL (IN)	30	0.44	0.46	0.54	0.52	0.50	0.59	1.37	1.64	1.00	0.89	0.43	0.50	8.88
	MAXIMUM MONTHLY (IN)	59	1.32	1.82	2.34	1.97	3.07	2.86	3.33	3.30	2.63	3.08	1.93	1.85	3.33
	YEAR OF OCCURRENCE		1978	1993	1998	1942	1941	1996	1968	1967	1988	1972	1991	1959	JUL 1968
	MINIMUM MONTHLY (IN)	59	T	T	T	T	T	T	0.08	T	T	0.00	0.00	0.00	0.00
	YEAR OF OCCURRENCE		1970	1984	1966	1996	1945	1975	1980	1962	1957	1952	1949	1981	DEC 1981
	MAXIMUM IN 24 HOURS (IN)	59	0.87	0.80	1.45	1.66	1.14	1.64	1.77	2.13	1.92	1.80	1.67	1.35	2.13
	YEAR OF OCCURRENCE		1962	1993	1998	1969	1969	1952	1961	1994	1955	1969	1991	1958	AUG 1994
	NORMAL NO. DAYS WITH:														
PRECIPITATION ≥ 0.01	30	4.0	4.2	4.7	3.1	4.4	4.2	9.0	9.4	6.4	4.7	4.0	4.2	62.3	
PRECIPITATION ≥ 1.00	30	0.0	0.0	0.0	0.1	0.0	0.1	0.1	0.2	0.0	0.1	0.0	0.0	0.6	
SNOWFALL	NORMAL (IN)	30	2.9	2.7	2.0	0.7	0.*	0.0	0.0	0.0	T	0.2	0.7	2.2	11.4
	MAXIMUM MONTHLY (IN)	59	9.5	10.3	13.9	8.1	1.0	T	T	T	T	3.2	9.3	14.7	14.7
	YEAR OF OCCURRENCE		1973	1986	1973	1973	1979	1996	1996	1996	1971	1986	1940	1959	DEC 1959
	MAXIMUM IN 24 HOURS (IN)	59	5.1	6.0	10.7	10.9	1.0	T	T	T	T	3.2	5.5	14.2	14.2
	YEAR OF OCCURRENCE		1973	1986	1973	1988	1979	1996	1990	1993	1971	1986	1946	1958	DEC 1958
	MAXIMUM SNOW DEPTH (IN)	50	47	16	8	11	0	0	0	0	0	3	12	25	47
	YEAR OF OCCURRENCE		1977	1986	1973	1988						1986	1992	1958	JAN 1977
NORMAL NO. DAYS WITH:															
SNOWFALL ≥ 1.0	30	1.0	1.2	0.6	0.2	0.0	0.0	0.0	0.0	0.0	0.*	0.3	0.8	4.1	

PRECIPITATION (inches) 1998 ALBUQUERQUE, NM (ABQ)

YEAR	JAN	FEB	MAR	APR	MAY	JUN	JUL	AUG	SEP	OCT	NOV	DEC	ANNUAL
1969	0.08	0.34	0.41	1.76	1.31	0.59	0.94	0.95	1.08	2.37	0.01	0.72	10.56
1970	T	0.27	0.42	0.05	0.33	0.40	1.22	2.24	0.79	0.25	0.08	0.23	6.28
1971	0.27	0.21	0.03	0.78	0.16	0.02	1.05	0.87	1.44	1.15	0.67	1.40	8.05
1972	0.12	0.12	0.08	T	0.18	0.55	1.00	2.93	1.00	3.08	0.69	0.36	10.11
1973	0.85	0.33	2.18	0.91	0.66	1.37	1.80	1.19	1.13	0.35	0.08	0.03	10.88
1974	0.88	0.11	0.85	0.14	0.01	0.22	2.40	0.79	1.58	1.96	0.38	0.51	9.83
1975	0.26	0.99	0.95	0.10	0.66	T	1.43	1.40	1.66	T	0.28	0.28	8.01
1976	0.00	0.40	0.09	0.31	0.82	0.60	1.32	0.73	0.45	0.03	0.24	0.20	5.19
1977	0.88	0.13	0.63	1.07	0.10	0.04	0.69	2.28	0.78	0.76	0.42	0.13	7.91
1978	1.32	1.02	0.54	0.05	0.69	1.05	0.24	2.49	0.59	1.22	1.00	0.76	10.97
1979	1.07	0.62	0.14	0.24	2.48	1.02	0.80	1.53	0.40	0.27	0.91	0.87	10.35
1980	0.87	0.58	0.60	0.60	0.56	0.01	0.08	2.61	1.83	0.09	0.30	0.74	8.87
1981	0.05	0.67	0.80	0.30	0.53	0.35	1.07	1.68	0.41	1.43	0.37	0.00	7.66
1982	0.32	0.20	0.84	0.05	0.52	0.09	1.32	1.09	1.34	0.26	0.60	0.78	7.41
1983	1.10	0.71	0.61	0.02	0.32	1.21	0.55	0.27	0.91	1.20	0.44	0.42	7.76
1984	0.33	T	0.62	0.50	0.16	0.48	1.13	2.70	1.13	3.04	0.63	1.36	12.08
1985	0.49	0.54	0.70	1.69	1.12	0.53	1.16	0.49	1.53	2.15	0.19	0.16	10.75
1986	0.22	1.01	0.17	0.33	1.11	2.57	1.51	2.26	0.53	1.54	1.29	0.44	12.98
1987	0.66	0.61	0.07	1.00	0.58	0.13	0.91	2.98	0.20	0.44	0.42	0.34	8.34
1988	0.15	0.07	0.85	1.42	0.62	1.25	2.26	3.29	2.63	0.32	0.22	0.03	13.11
1989	0.57	0.35	0.48	T	0.02	0.02	1.51	0.48	0.31	0.97	T	0.28	4.99
1990	0.21	0.49	0.41	1.71	0.45	0.27	2.36	1.79	0.96	0.15	0.86	0.59	10.25
1991	0.60	0.06	0.14	T	1.14	0.65	2.63	1.26	1.43	0.26	1.93	1.49	11.59
1992	0.60	0.20	0.63	0.22	1.81	0.67	2.01	2.17	0.79	0.70	1.12	1.16	12.08
1993	0.94	1.82	0.22	T	0.20	0.44	0.23	3.05	0.49	0.64	0.97	0.03	9.03
1994	0.02	0.26	0.59	0.07	1.87	0.28	0.61	2.70	1.21	1.54	1.38	0.62	11.15
1995	0.55	0.39	0.16	0.69	0.08	0.20	0.35	0.74	2.32	T	0.03	0.17	5.68
1996	0.17	0.19	0.02	T	0.02	2.86	1.03	1.54	1.45	1.52	0.95	T	9.75
1997	0.55	0.12	0.11	1.65	0.42	1.03	2.04	1.96	2.43	0.32	0.73	1.00	12.36
1998	0.14	0.66	2.34	0.64	T	0.17	2.37	0.88	0.15	1.80	0.46	0.22	9.83
POR= 106 YRS	0.40	0.38	0.46	0.55	0.63	0.61	1.32	1.41	0.91	0.82	0.41	0.41	8.31

WBAN : 23050

AVERAGE TEMPERATURE (°F) 1998 ALBUQUERQUE, NM (ABQ)

YEAR	JAN	FEB	MAR	APR	MAY	JUN	JUL	AUG	SEP	OCT	NOV	DEC	ANNUAL
1969	38.0	38.5	41.1	57.4	66.2	73.6	80.2	79.0	70.0	53.8	41.4	39.1	56.5
1970	34.5	42.8	44.1	52.5	66.2	72.7	79.6	77.8	67.5	52.6	44.5	36.4	55.9
1971	33.6	38.9	47.7	53.3	61.7	73.8	78.1	73.9	66.4	53.8	45.2	31.9	54.9
1972	36.1	42.5	53.6	56.9	64.0	73.7	78.6	74.1	68.1	57.6	40.1	35.0	56.7
1973	31.8	35.9	45.1	50.2	62.7	73.5	78.4	78.0	67.5	56.4	44.6	34.0	54.8
1974	33.6	37.9	52.8	56.4	68.5	80.1	77.0	72.7	66.1	58.1	45.0	32.0	56.7
1975	30.8	38.0	45.0	49.9	61.0	73.0	76.8	76.1	66.3	56.5	42.6	35.6	54.3
1976	33.2	43.3	44.3	54.6	62.8	73.4	77.0	75.0	68.0	53.1	40.6	33.0	54.9
1977	29.8	40.7	43.2	56.5	64.2	75.5	78.6	77.4	69.4	58.9	46.4	40.4	56.8
1978	36.8	39.3	50.2	57.7	60.5	75.5	81.6	75.5	69.1	60.3	47.5	34.3	57.4
1979	32.9	41.1	48.4	56.9	63.7	73.3	80.6	77.1	72.3	61.5	41.0	37.7	57.2
1980	40.2	44.2	46.1	52.1	61.1	77.2	82.7	77.4	69.9	54.5	43.5	40.5	57.5
1981	38.0	42.9	46.2	59.0	64.5	77.0	79.8	76.4	69.7	55.7	47.0	40.5	58.1
1982	35.9	39.4	47.4	56.1	63.0	74.8	79.1	77.4	69.5	54.8	42.9	34.4	56.2
1983	35.0	39.7	46.9	50.2	63.0	73.4	80.4	79.4	73.4	58.3	45.1	36.7	56.8
1984	34.1	40.1	46.8	52.8	69.9	73.6	78.9	75.7	68.8	51.6	43.7	35.6	56.0
1985	33.8	38.3	47.5	57.4	64.0	74.1	77.1	76.6	65.9	57.5	45.4	37.6	56.3
1986	41.3	43.0	50.9	56.5	63.7	72.7	74.7	76.0	66.5	54.6	42.0	36.3	56.5
1987	32.3	39.2	43.7	54.8	62.8	73.0	77.8	74.7	68.8	61.3	45.2	35.3	55.7
1988	34.6	43.9	47.0	55.1	64.3	74.4	78.1	75.0	66.3	61.1	45.4	33.9	56.6
1989	35.5	41.9	52.8	61.4	68.8	75.6	78.6	74.3	69.4	56.7	46.4	35.1	58.0
1990	34.6	38.5	48.6	57.3	63.6	79.0	76.8	73.8	70.9	58.3	45.0	32.1	56.5
1991	35.7	44.6	46.1	56.0	65.5	73.4	76.9	75.5	68.1	59.6	43.4	37.3	56.8
1992	32.7	42.3	48.9	60.0	64.6	72.4	76.2	75.0	70.3	60.8	39.7	32.8	56.3
1993	39.7	42.5	48.8	57.1	65.7	75.1	79.9	75.6	69.1	56.2	43.3	37.3	57.5
1994	38.1	40.7	50.2	58.5	66.9	80.4	81.3	79.4	71.0	57.0	44.5	40.9	59.1
1995	39.2	49.3	50.7	54.2	64.5	74.8	80.0	79.8	69.5	59.5	50.8	40.9	59.4
1996	39.3	46.1	46.8	57.5	71.5	76.5	79.5	76.2	66.2	55.9	45.6	38.7	58.3
1997	33.4	40.7	51.8	52.6	65.9	73.0	77.6	76.3	71.5	56.5	43.6	32.7	56.3
1998	37.9	38.8	46.7	52.2	65.6	74.4	77.1	77.1	74.4	57.9	46.5	38.5	57.3
POR= 106 YRS	34.7	39.9	46.7	55.1	63.9	73.6	77.4	75.3	68.6	56.9	43.9	35.3	55.9

HEATING DEGREE DAYS (base 65°F) 1998 ALBUQUERQUE, NM (ABQ)

YEAR	JUL	AUG	SEP	OCT	NOV	DEC	JAN	FEB	MAR	APR	MAY	JUN	TOTAL
1969-70	0	0	1	348	701	795	938	612	644	367	63	11	4480
1970-71	0	0	58	380	605	878	968	725	533	343	122	5	4617
1971-72	0	0	101	341	587	1022	889	648	346	244	76	0	4254
1972-73	0	3	14	244	740	925	1020	811	607	440	113	3	4920
1973-74	0	0	43	257	606	955	963	754	373	255	29	4	4239
1974-75	0	2	68	212	593	1020	1051	748	614	449	143	6	4906
1975-76	0	0	47	256	664	905	979	622	634	304	99	1	4511
1976-77	0	0	35	367	726	985	1084	675	669	250	61	0	4852
1977-78	0	0	1	192	551	757	870	713	454	215	175	2	3930
1978-79	0	0	20	167	521	945	988	665	509	241	100	12	4168
1979-80	0	0	23	148	715	840	763	595	577	379	139	2	4181
1980-81	0	0	6	335	640	752	827	611	575	197	62	2	4007
1981-82	0	0	3	280	534	754	895	709	538	268	94	0	4075
1982-83	0	0	23	314	658	941	922	703	556	439	127	0	4683
1983-84	0	0	11	198	592	875	948	714	559	362	22	3	4284
1984-85	0	0	51	411	631	903	960	744	536	220	74	7	4537
1985-86	0	0	61	228	581	842	727	610	431	249	80	8	3817
1986-87	0	0	51	313	680	882	1004	717	653	300	81	2	4683
1987-88	0	0	2	133	589	914	937	605	551	290	103	2	4126
1988-89	0	5	39	118	579	959	909	640	373	133	31	0	3786
1989-90	0	0	10	260	551	918	934	735	501	233	103	0	4245
1990-91	0	0	14	202	595	1013	903	563	581	263	60	12	4206
1991-92	0	0	21	188	645	851	994	651	493	170	53	5	4071
1992-93	0	0	8	128	742	991	778	624	496	238	69	3	4087
1993-94	0	0	15	284	642	853	827	676	453	218	52	0	4020
1994-95	0	0	1	251	610	741	793	435	433	320	67	0	3651
1995-96	0	0	37	165	419	741	787	540	558	239	12	0	3498
1996-97	0	0	66	297	575	809	973	676	403	366	48	12	4225
1997-98	0	0	9	278	635	994	834	727	558	376	51	4	4466
1998-	0	0	0	225	549	816							

WBAN : 23050

COOLING DEGREE DAYS (base 65°F) 1998 ALBUQUERQUE, NM (ABQ)

YEAR	JAN	FEB	MAR	APR	MAY	JUN	JUL	AUG	SEP	OCT	NOV	DEC	ANNUAL
1969	0	0	0	6	127	263	478	442	158	7	0	0	1481
1970	0	0	0	0	105	246	461	405	141	4	0	0	1362
1971	0	0	5	0	26	277	414	282	149	0	0	0	1153
1972	0	0	0	5	52	267	428	294	113	23	0	0	1182
1973	0	0	0	0	48	267	422	409	124	0	0	0	1270
1974	0	0	0	5	144	464	380	247	107	6	0	0	1353
1975	0	0	0	0	25	256	372	351	96	0	0	0	1100
1976	0	0	0	0	38	260	382	319	137	5	0	0	1141
1977	0	0	0	0	44	324	427	392	141	7	0	0	1335
1978	0	0	0	4	41	324	521	330	151	27	0	0	1398
1979	0	0	0	5	67	269	491	382	249	45	0	0	1508
1980	0	0	0	0	27	375	557	392	160	15	0	0	1526
1981	0	0	0	28	51	368	470	360	152	1	0	0	1430
1982	0	0	0	6	38	301	441	394	163	4	0	0	1347
1983	0	0	0	1	72	260	484	450	267	1	0	0	1535
1984	0	0	0	4	179	266	441	340	169	1	0	0	1400
1985	0	0	0	0	51	289	383	368	97	0	0	0	1188
1986	0	0	0	1	50	245	310	349	103	0	0	0	1058
1987	0	0	0	0	17	251	404	308	120	25	0	0	1125
1988	0	0	0	1	85	288	411	322	86	3	0	0	1196
1989	0	0	0	31	154	323	426	295	150	10	0	0	1389
1990	0	0	0	10	66	426	374	281	200	2	0	0	1359
1991	0	0	0	0	87	269	375	331	120	25	0	0	1207
1992	0	0	0	27	49	235	354	318	171	5	0	0	1159
1993	0	0	0	8	101	312	470	337	145	16	0	0	1389
1994	0	0	0	29	115	469	512	455	188	10	0	0	1778
1995	0	0	0	4	55	302	472	467	182	1	0	0	1483
1996	0	0	0	19	218	352	457	354	109	21	0	0	1530
1997	0	0	0	0	85	261	398	354	212	21	0	0	1331
1998	0	0	0	1	78	292	383	383	288	11	0	0	1436

SNOWFALL (inches) 1998 ALBUQUERQUE, NM (ABQ)

YEAR	JUL	AUG	SEP	OCT	NOV	DEC	JAN	FEB	MAR	APR	MAY	JUN	TOTAL
1969-70	0.0	0.0	0.0	0.0	T	1.1	T	2.7	3.3	0.0	0.0	0.0	7.1
1970-71	0.0	0.0	0.0	0.5	T	0.5	3.0	2.3	0.5	T	0.0	0.0	6.8
1971-72	0.0	0.0	T	T	T	6.8	1.2	1.1	0.0	T	0.0	0.0	9.1
1972-73	0.0	0.0	0.0	T	2.9	1.2	9.5	1.8	13.9	8.1	0.0	0.0	37.4
1973-74	0.0	0.0	0.0	0.3	0.6	0.1	9.3	0.6	2.0	0.0	0.0	0.0	12.9
1974-75	0.0	0.0	0.0	0.0	T	4.9	0.9	6.7	3.8	0.2	0.0	0.0	16.5
1975-76	0.0	0.0	0.0	0.0	0.2	2.9	0.0	T	0.5	0.2	0.0	0.0	3.8
1976-77	0.0	0.0	0.0	T	2.4	1.2	8.4	1.4	2.3	2.6	0.0	0.0	18.3
1977-78	0.0	0.0	0.0	0.0	0.0	T	6.0	3.4	2.0	0.0	0.1	0.0	11.5
1978-79	0.0	0.0	0.0	0.0	T	1.0	2.6	6.0	T	0.5	1.0	0.0	11.1
1979-80	0.0	0.0	0.0	0.9	0.8	2.7	T	0.9	3.1	T	T	0.0	8.4
1980-81	0.0	0.0	0.0	T	2.8	7.4	0.5	2.6	0.9	T	0.0	0.0	14.2
1981-82	0.0	0.0	0.0	0.0	0.0	0.0	3.6	1.2	0.7	T	0.0	0.0	5.5
1982-83	0.0	0.0	0.0	0.0	0.9	3.3	7.3	4.2	1.0	T	T	0.0	16.7
1983-84	0.0	0.0	0.0	0.0	0.8	0.8	4.1	T	0.1	3.0	0.0	0.0	8.8
1984-85	0.0	0.0	0.0	T	T	3.4	2.0	2.9	0.6	0.0	0.0	0.0	8.9
1985-86	0.0	0.0	0.0	0.0	0.7	0.9	2.9	10.3	0.3	0.0	T	0.0	15.1
1986-87	0.0	0.0	0.0	3.2	0.6	0.2	4.9	4.9	0.2	2.2	0.0	0.0	16.2
1987-88	0.0	0.0	0.0	0.0	1.1	1.7	1.2	T	7.9	4.2	0.0	0.0	16.1
1988-89	0.0	0.0	0.0	0.0	1.7	0.3	3.4	3.2	3.1	0.0	0.0	0.0	11.7
1989-90	0.0	0.0	0.0	0.0	T	2.5	1.8	4.8	T	0.3	T	T	9.4
1990-91	T	0.0	0.0	0.0	2.2	6.3	0.9	T	0.8	T	0.0	0.0	10.2
1991-92	0.0	0.0	0.0	2.5	1.5	2.1	5.6	T	1.0	0.0	T	T	12.7
1992-93	0.0	T	0.0	0.0	5.9	7.6	0.8	2.0	0.2	0.0	T	0.0	16.5
1993-94	0.0	T	0.0	T	4.1	0.2	T	T	1.2	0.0	T	0.0	5.5
1994-95	0.0	0.0	0.0	0.0	T	0.5	5.3	0.0	0.4	3.2	0.0	0.0	9.4
1995-96	0.0	0.0	0.0	0.0	0.0	0.9	0.6	1.7	0.2	0.0	0.0	T	3.4
1996-97	T	T	0.0	1.1	2.5	0.0	4.7	0.9	0.3	2.9	0.0	T	12.4
1997-98	0.0	0.0	0.0	T	1.1	8.8	0.2	1.0	0.9	0.4	0.0	0.0	12.4
1998-	T	0.0	0.0	0.0	1.3	2.7							
POR= 58 YRS	T	T	T	0.1	1.2	2.6	2.5	2.1	1.8	0.6	T	T	10.9

WBAN : 23050

REFERENCE NOTES:

<p>PAGE 1: THE TEMPERATURE GRAPH SHOWS NORMAL MAXIMUM AND NORMAL MINIMUM DAILY TEMPERATURES (SOLID CURVES) AND THE ACTUAL DAILY HIGH AND LOW TEMPERATURES (VERTICAL BARS).</p> <p>PAGE 2 AND 3: H/C INDICATES HEATING AND COOLING DEGREE DAYS. RH INDICATES RELATIVE HUMIDITY W/O INDICATES WEATHER AND OBSTRUCTIONS S INDICATES SUNSHINE. PR INDICATES PRESSURE. CLOUDINESS ON PAGE 3 IS THE SUM OF THE CEILOMETER AND SATELLITE DATA NOT TO EXCEED EIGHT EIGHTHS(OKTAS).</p> <p>GENERAL: T INDICATES TRACE PRECIPITATION, AN AMOUNT GREATER THAN ZERO BUT LESS THAN THE LOWEST REPORTABLE VALUE. + INDICATES THE VALUE ALSO OCCURS ON EARLIER DATES. BLANK ENTRIES DENOTE MISSING OR UNREPORTED DATA. NORMALS ARE 30-YEAR AVERAGES (1961 - 1990). ASOS INDICATES AUTOMATED SURFACE OBSERVING SYSTEM. PM INDICATES THE LAST DAY OF THE PREVIOUS MONTH. POR (PERIOD OF RECORD) BEGINS WITH THE JANUARY DATA MONTH AND IS THE NUMBER OF YEARS USED TO COMPUTE THE MEAN. INDIVIDUAL MONTHS WITHIN THE POR MAY BE MISSING. WHEN THE POR FOR A NORMAL IS LESS THAN 30 YEARS, THE NORMAL IS PROVISIONAL AND IS BASED ON THE NUMBER OF YEARS INDICATED. 0.* OR * INDICATES THE VALUE OR MEAN-DAYS-WITH IS BETWEEN 0.00 AND 0.05. CLOUDINESS FOR ASOS STATIONS DIFFERS FROM THE NON-ASOS OBSERVATION TAKEN BY A HUMAN OBSERVER. ASOS STATION CLOUDINESS IS BASED ON TIME-AVERAGED CEILOMETER DATA FOR CLOUDS AT OR BELOW 12,000 FEET AND ON SATELLITE DATA FOR CLOUDS ABOVE 12,000 FEET. THE NUMBER OF DAYS WITH CLEAR, PARTLY CLOUDY, AND CLOUDY CONDITIONS FOR ASOS STATIONS IS THE SUM OF THE CEILOMETER AND SATELLITE DATA FOR THE SUNRISE TO SUNSET PERIOD.</p>	<p>GENERAL CONTINUED: CLEAR INDICATES 0 - 2 OKTAS, PARTLY CLOUDY INDICATES 3 - 6 OKTAS, AND CLOUDY INDICATES 7 OR 8 OKTAS. WHEN AT LEAST ONE OF THE ELEMENTS (CEILOMETER OR SATELLITE) IS MISSING, THE DAILY CLOUDINESS IS NOT COMPUTED. WIND DIRECTION IS RECORDED IN TENS OF DEGREES (2 DIGITS) CLOCKWISE FROM TRUE NORTH. "00" INDICATES CALM. "36" INDICATES TRUE NORTH. RESULTANT WIND IS THE VECTOR AVERAGE OF THE SPEED AND DIRECTION. AVERAGE TEMPERATURE IS THE SUM OF THE MEAN DAILY MAXIMUM AND MINIMUM TEMPERATURE DIVIDED BY 2. SNOWFALL DATA COMPRISE ALL FORMS OF FROZEN PRECIPITATION, INCLUDING HAIL. A HEATING (COOLING) DEGREE DAY IS THE DIFFERENCE BETWEEN THE AVERAGE DAILY TEMPERATURE AND 65° F. DRY BULB IS THE TEMPERATURE OF THE AMBIENT AIR. DEW POINT IS THE TEMPERATURE TO WHICH THE AIR MUST BE COOLED TO ACHIEVE 100 PERCENT RELATIVE HUMIDITY. WET BULB IS THE TEMPERATURE THE AIR WOULD HAVE IF THE MOISTURE CONTENT WAS INCREASED TO 100 PERCENT RELATIVE HUMIDITY.</p> <p>ON JULY 1, 1996, THE NATIONAL WEATHER SERVICE BEGAN USING THE "METAR" OBSERVATION CODE THAT WAS ALREADY EMPLOYED BY MOST OTHER NATIONS OF THE WORLD. THE MOST NOTICEABLE DIFFERENCE IN THIS ANNUAL PUBLICATION WILL BE THE CHANGE IN UNITS FROM TENTHS TO EIGHTHS(OKTAS) FOR REPORTING THE AMOUNT OF SKY COVER.</p>
---	---

1998
ALBUQUERQUE,
NEW MEXICO (ABQ)

The Albuquerque metropolitan area is largely situated in the Rio Grande Valley and on the mesas and piedmont slopes which rise either side of the valley floor. The Rio Grande flows from north to south through the area. The Sandia and Manzano Mountains rise abruptly at the eastern edge of the city with Tijeras Canyon separating the two ranges. West of the city the land gradually rises to the Continental Divide, some 90 miles away.

The climate of Albuquerque is best described as arid continental with abundant sunshine, low humidity, scant precipitation, and a wide yet tolerable seasonal range of temperatures. Sunny days and low humidity are renowned features of the climate. More than three-fourths of the daylight hours have sunshine, even in the winter months. The air is normally dry and muggy days are rare. The combination of dry air and plentiful solar radiation allows widespread use of energy-efficient devices such as evaporative coolers and solar collectors.

Precipitation within the valley area is adequate only for native desert vegetation and deep-rooted imports. However, irrigation supports successful farming and fruit growing in the Rio Grande Valley. On the east slopes of the Sandias and Manzanos, precipitation is sufficient for thick stands of timber and good grass cover.

Meager amounts of precipitation fall in the winter, much of it as snow. Snowfalls of an inch or more occur about four times a year in the Rio Grande Valley, while the mountains receive substantial snowfall on occasion. Snow seldom remains on the ground more than 24 hours in the city proper. However, snow cover on the east slopes of the Sandias is sufficient for skiing during most winters.

Nearly half of the annual precipitation in Albuquerque results from afternoon and evening thunderstorms during the summer. Thunderstorm frequency increases rapidly around July 1st, peaks during August, then tapers off by the end of September. Thunderstorms are usually brief, sometimes produce heavy rainfall, and often lower afternoon temperatures noticeably. Hailstorms are infrequent and tornadoes rare.

Temperatures in Albuquerque are those characteristic of a dry, high altitude, continental climate. The average daily range of temperature is relatively high, but extreme temperatures are rare. High temperatures during the winter are near 50 degrees with only a few days on which the temperature fails to rise above the freezing mark. In the summer, daytime maxima are about 90 degrees, but with the large daily range, the nights usually are comfortably cool.

The average number of days between the last freezing temperature in spring and the first freeze in fall varies widely across the Albuquerque metropolitan area. The growing season in Albuquerque and adjacent suburbs ranges from around 170 days in the Rio Grande Valley to about 200 days in parts of the northeast section of the city.

Sustained winds of 12 mph or less occur approximately 80 percent of the time at the Albuquerque International Airport, while sustained winds greater than 25 mph have a frequency less than 3 percent. Late winter and spring storms along with occasional east winds out of Tijeras Canyon are the main sources of strong wind conditions. Blowing dust, the least attractive feature of the climate, often accompanies the occasional strong winds of winter and spring.

STATION LOCATION

ALBUQUERQUE, NEW MEXICO

LOCATION	OCCUPIED FROM	OCCUPIED TO	AIRLINE DISTANCES AND DIRECTIONS FROM PREVIOUS LOCATION	LATITUDE NORTH	LONGITUDE WEST	ELEVATION ABOVE											* Type	REMARKS
						SEA LEVEL	GROUND											
							WIND	EMERGENCY	OROGRAPHIC	SOUNDING	TELEPHONE	RAIN	WIND	RAIN	RAIN	RAIN		
<u>COOPERATIVE</u>																		
4th and W. Gold Avenue	1/1892	12/1892	NA	35°05'	106°39'	Unk												
University of New Mex.	1/1893	5/1910	1.5 mi. E	35°05'	106°37'	5150		Unk										
1216 W. Central Avenue	1/1906	1/1916	2 mi. W	35°05'	106°40'	4960												
Rio Grande Industrial School	5/1915	12/31/18	5 mi. S	35°01'	106°40'	4950		4										Precipitation only. Record intermittent. Temperature only after July 1916.
5th and W. Central Ave.	8/1916	8/1918	5 mi. N	35°05'	106°39'	4960												
University of New Mex.	9/1918	3/1931	1.5 mi. E	35°05'	106°37'	5150	59	48	48									
<u>CITY</u>																		
Kimo Theatre Building 419 W. Central Avenue	4/1/31	1/23/33	1.5 mi. W	35°05'	106°39'	4960	66	52	51		45		45					Office moved 1000 feet SW to Federal Building 6/29/32, but instruments not moved.
<u>AIRPORT</u>																		
TWA Airport West of City	1/23/33	7/31/39	3.8 mi. W	35°05'	106°43'	5100	39	6	5		15		15					
Administration Building Municipal Airport	7/31/39	6/23/58	6 mi. ESE	35°03'	106°37'	5310	48	6	5	Unk	3	5	3					
Administration Building Municipal Airport	6/23/58	2/4/60	A			5310	48	16	15	Unk a31	13	15	13					A - Instrument relocation to roof 33 feet SSE of ground site.
Administration Building Municipal Airport	2/4/60	3/16/65	B	35°03'	106°37'	5311	48 b23	17	17	31	13	15	13	5				B - Instrument relocations and commissioning of hygrothermometer. a - Effective 9/18/59. b - Effective 3/1/60.
FAA/Weather Bureau Building + Albuquerque Support-Kirtland AFB ++	3/16/65	Present	350 ft. SW	35°03'	106°37'	5311	c23	16	16	16 d26	17	17	c13 e17	c5 f5	NA			c - Not moved 3/16/65. d - Effective 1/22/66. e - Effective 4/16/66. f - Relocated 11/28/84.
+ FAA/Weather Service Building (Eff.1971)																		
++ Albuquerque Int'l AP (Effective 1981)															S			ASOS commissioned 03/01/96

SUBSCRIPTION: Price and ordering information available through: National Climatic Data Center, Federal Building, Asheville, North Carolina 28801. INQUIRIES/COMMENTS CALL: (828) 271-4800

National Climatic Data Center
151 Patton Avenue, Rm 120
Asheville NC 28801-5001

OFFICIAL BUSINESS
PENALTY FOR PRIVATE USE \$300
FORWARD AND ADDRESS CORRECTION

FIRST CLASS
POSTAGE & FEES PAID
United States Department of Commerce
NOAA Permit No. G - 19