

1998

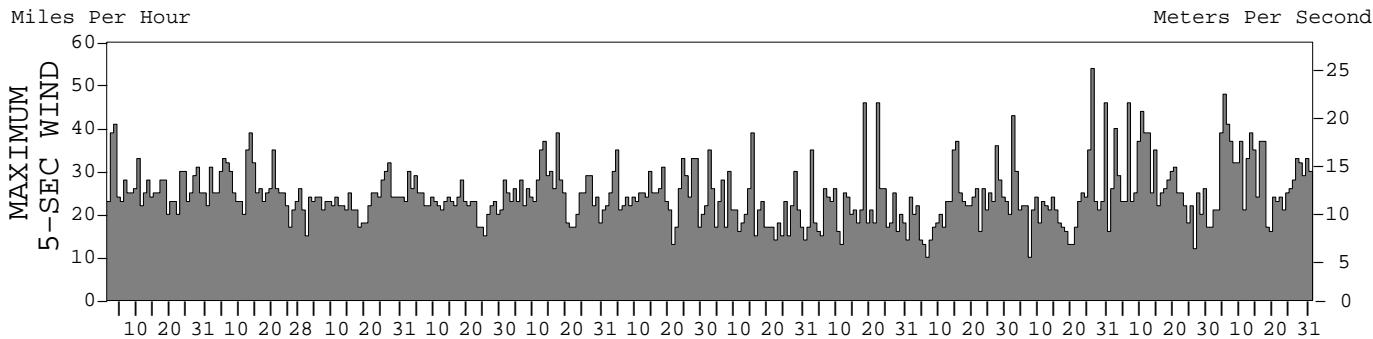
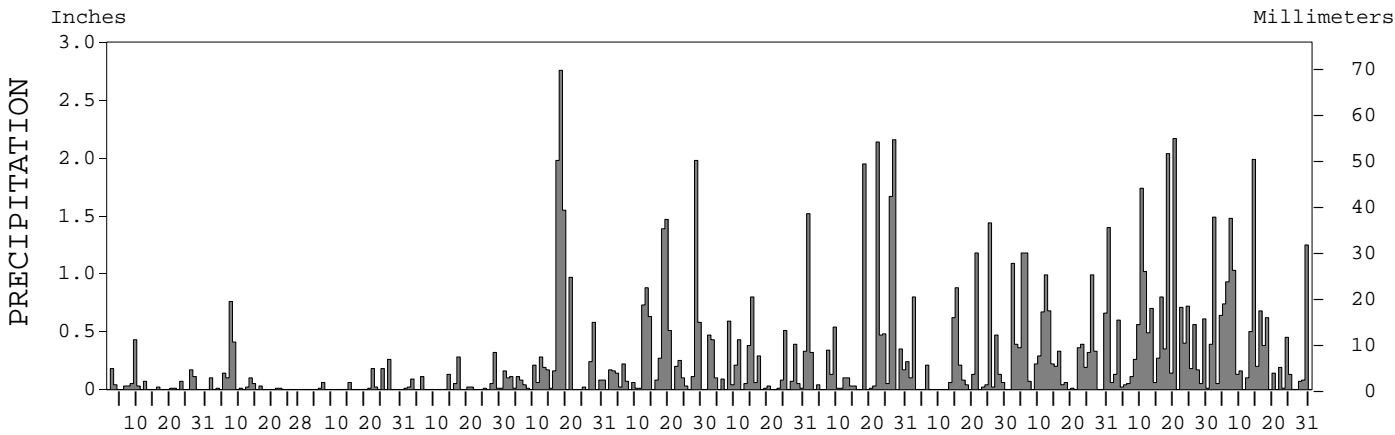
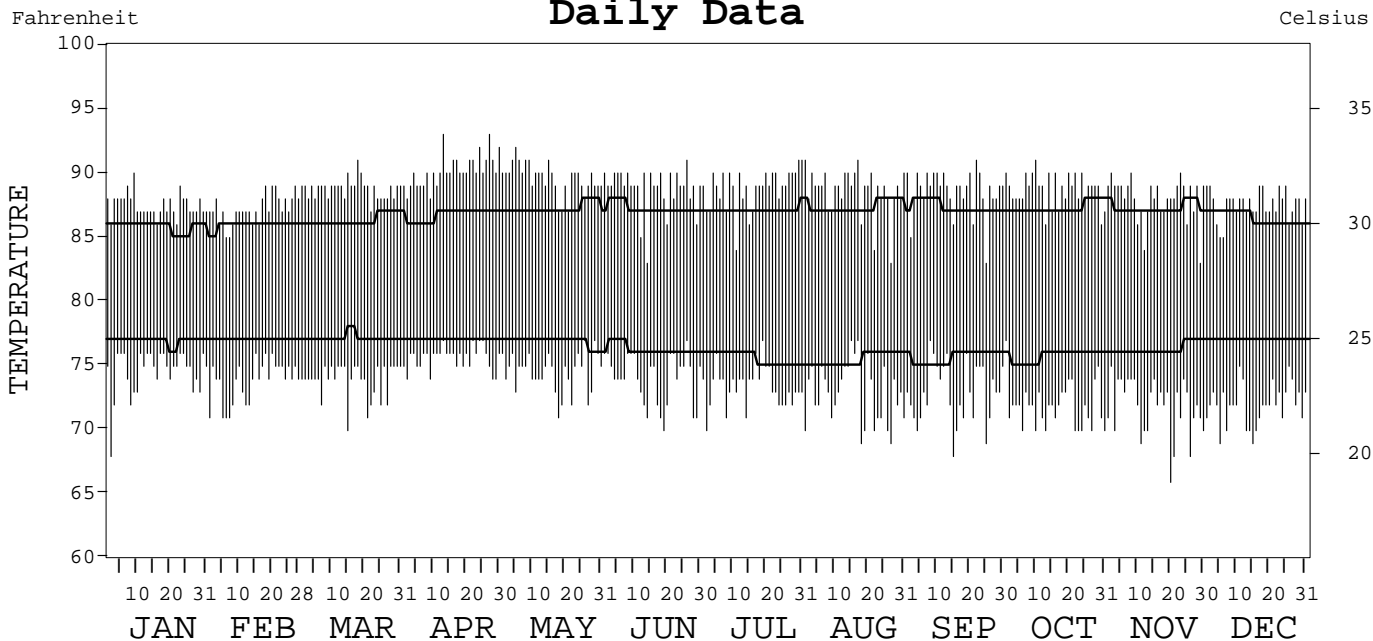
LOCAL CLIMATOLOGICAL DATA
ANNUAL SUMMARY WITH COMPARATIVE DATA



CHUUK, EASTERN CAROLINE IS.,
PACIFIC (PTKK)

ISSN 0198-4403

Daily Data



I CERTIFY THAT THIS IS AN OFFICIAL PUBLICATION OF THE NATIONAL OCEANIC AND ATMOSPHERIC ADMINISTRATION, AND IS COMPILED FROM RECORDS ON FILE AT THE NATIONAL CLIMATIC DATA CENTER.

NATIONAL OCEANIC AND ATMOSPHERIC ADMINISTRATION
 NATIONAL ENVIRONMENTAL AND INFORMATION SERVICE
 NATIONAL ENVIRONMENTAL AND INFORMATION SERVICE
 NATIONAL CLIMATIC DATA CENTER
 NATIONAL CLIMATIC DATA CENTER
 DIRECTOR NATIONAL CLIMATIC DATA CENTER
 ASHEVILLE, NORTH CAROLINA

METEOROLOGICAL DATA FOR 1998

CHUUK, PC (PTKK)

LATITUDE: 7° 27' 0" N LONGITUDE: 151° 50' 0" E ELEVATION (FT): GRND: 5 BARO: 8 TIME ZONE: 165 E MER (UTC- 11) WBAN: 40505

	ELEMENT	JAN	FEB	MAR	APR	MAY	JUN	JUL	AUG	SEP	OCT	NOV	DEC	YEAR	
TEMPERATURE °F	MEAN DAILY MAXIMUM	87.5	87.2	88.8	90.2	89.6	88.8	88.8	88.6	88.6	88.7	88.0	87.5	88.5	
	HIGHEST DAILY MAXIMUM	90	89	91	93	92	91	91	91	91	91	90	89	93	
	DATE OF OCCURRENCE	09	27+	18	27+	05	26	31+	17+	22	10	23+	25+	APR 27+	
	MEAN DAILY MINIMUM	74.5	73.8	73.9	75.6	74.5	74.0	73.4	72.9	72.9	71.9	71.8	72.0	73.4	
	LOWEST DAILY MINIMUM	68	71	70	74	71	70	70	69	68	70	66	69	66	
	DATE OF OCCURRENCE	02	07+	15	29+	18	19	02	27+	15	31+	20	15+	NOV 20	
	AVERAGE DRY BULB	81.0	80.5	81.4	82.9	82.1	81.4	81.1	80.8	80.8	80.3	79.9	79.8	81.0	
	MEAN WET BULB	76.0	75.8	75.4	77.9	78.7	78.8	78.2		77.9	78.1	78.0	77.9		
	MEAN DEW POINT	73.2	72.9	72.1	75.3	76.7	76.7	76.2		75.8	76.2	76.2	75.8		
	NUMBER OF DAYS WITH:														
	MAXIMUM ≥ 90°	1	0	3	22	18	11	12	9	9	9	3	0	0	97
	MAXIMUM ≤ 32°	0	0	0	0	0	0	0	0	0	0	0	0	0	0
	MINIMUM ≤ 32°	0	0	0	0	0	0	0	0	0	0	0	0	0	0
MINIMUM ≤ 0°	0	0	0	0	0	0	0	0	0	0	0	0	0	0	
H/C	HEATING DEGREE DAYS	0	0	0	0	0	0	0	0	0	0	0	0	0	
	COOLING DEGREE DAYS	503	439	513	542	536	497	508	495	481	481	455	466	5916	
RH	MEAN (PERCENT)	75	74	71	75	79	80	80	80	78	81	82	80	78	
	HOUR 05 LST	77	78	76	80	83	83	85	86	84	85	85	83	82	
	HOUR 11 LST	71	68	66	69	75	75	76	76	75	76	77	75	73	
	HOUR 17 LST	72	73	69	72	77	79	75	74	76	78	80	80	75	
	HOUR 23 LST	77	76	75	79	82	83	83	82	81	85	84	81	81	
S	PERCENT POSSIBLE SUNSHINE	16	50	60	46	22	23	31	39	56	46	41	29	38	
W/O	NUMBER OF DAYS WITH:														
	HEAVY FOG (VISBY ≤ 1/4 MI)	0	0	0	0	0	0	0	0	0	0	0	0	0	
	THUNDERSTORMS	0	0	0	0	1	2	1	2	0	3	6	5	20	
CLOUDINESS	AVG. SKY COVER (OKTAS)														
	SUNRISE - SUNSET	7	6	6	6	7	7	7		7	7	7	8		
	MIDNIGHT - MIDNIGHT	7	7	6	6	7	7	7		7	7	8	8		
	NUMBER OF DAYS WITH:														
	CLEAR	0	1	1	0	0	0	0	0	0	0	0	0	2	
PARTLY CLOUDY	8	15	18	15	3	4	11	9	3	5	6	3	100		
CLOUDY	23	12	12	15	28	26	20	21	27	26	24	28	262		
PR	MEAN STATION PRESS. (IN.)	29.87	29.91	29.88	29.87	29.84	29.82	29.83		29.82	29.80	29.78	29.77		
	MEAN SEA-LEVEL PRESS. (IN.)	29.88	29.93	29.90	29.88	29.85	29.84	29.84		29.83	29.82	29.79	29.78		
WINDS	RESULTANT SPEED (MPH)	9.9	9.2	10.7	9.8	7.5	6.4	3.7		3.3	1.6	3.5	5.2		
	RES. DIR. (TENS OF DEGS.)	08	09	08	08	09	09	09		06	09	12	09		
	MEAN SPEED (MPH)	13.2	12.6	12.9	11.7	10.7	9.6	8.0	8.6	8.7	7.3	9.2	10.4	10.2	
	PREVAIL. DIR. (TENS OF DEGS.)	04	04	04	04	04	04	04	04	06	06	04	06	04	
	MAXIMUM 2-MINUTE WIND:														
	SPEED (MPH)	23	23	22	23	22	18	21	25	21	29	23	23	29	
	DIR. (TENS OF DEGS.)	04	04	04	04	05	03	06	19	05	13	13	08	13	
	DATE OF OCCURRENCE	20	28+	26	02	12	09+	15	18	21	26	06	05	OCT 26	
	PEAK GUST :														
	SPEED (MPH)	41	39	32	30	39	35	39	46	37	54	46	48	54	
DIR. (TENS OF DEGS.)	NE	NE	NE	NE	NE	E	NE	S	S	SE	SE	NE	SE		
DATE OF OCCURRENCE	03	13	27	02	17	04	15	22+	15	26	06	05	OCT 26		
PRECIPITATION	WATER EQUIVALENT:														
	TOTAL (IN.)	1.25	1.75	0.78	1.13	9.96	10.07	5.43	12.89	6.49	12.62	15.02	13.83	91.22	
	GREATEST 24-HOUR (IN.)	0.43	1.08	0.26	0.32	2.76	2.68	0.83	3.81	1.44	2.35	2.17	2.39	3.81	
	DATE OF OCCURRENCE	09	07-08	27	28-29	18	18-19	02-03	26-27	25	05-06	20	06-07	AUG 26-27	
	NUMBER OF DAYS WITH:														
PRECIPITATION ≥ 0.01	14	13	8	14	24	24	23	24	18	25	29	25	241		
PRECIPITATION ≥ 0.10	4	6	3	4	15	17	12	16	11	21	22	21	152		
PRECIPITATION ≥ 1.00	0	0	0	0	3	3	0	5	2	4	4	5	26		
SNOWFALL	SNOW, ICE PELLETS, HAIL:														
	TOTAL (IN.)	0.0	0.0	0.0	0.0	0.0	0.0	0.0	0.0	0.0	0.0	0.0	0.0	0.0	
	GREATEST 24-HOUR (IN.)	0.0	0.0	0.0	0.0	0.0	0.0	0.0	0.0	0.0	0.0	0.0	0.0	0.0	
	DATE OF OCCURRENCE														
	MAXIMUM SNOW DEPTH (IN.)	0	0	0	0	0	0	0	0	0	0	0	0	0	
DATE OF OCCURRENCE															
NUMBER OF DAYS WITH:															
SNOWFALL ≥ 1.0	0	0	0	0	0	0	0	0	0	0	0	0	0		

HEATING DEGREE DAYS (base 65°F) 1998 CHUUK, EASTERN CAROLINE IS., PC (PTKK)

YEAR	JUL	AUG	SEP	OCT	NOV	DEC	JAN	FEB	MAR	APR	MAY	JUN	TOTAL
1983-84	0	0	0	0	0	0	0	0	0	0	0	0	0
1984-85	0	0	0	0	0	0	0	0	0	0	0	0	0
1985-86	0	0	0	0	0	0	0	0	0	0	0	0	0
1986-87	0	0	0	0	0	0	0	0	0	0	0	0	0
1987-88	0	0	0	0	0	0	0	0	0	0	0	0	0
1988-89	0	0	0	0	0	0	0	0	0	0	0	0	0
1989-90	0	0	0	0	0	0	0	0	0	0	0	0	0
1990-91	0	0	0	0	0	0	0	0	0	0	0	0	0
1991-92	0	0	0	0	0	0	0	0	0	0	0	0	0
1992-93	0	0	0	0	0	0	0	0	0	0	0	0	0
1993-94	0	0	0	0	0	0	0	0	0	0	0	0	0
1994-95	0	0	0	0	0	0	0	0	0	0	0	0	0
1995-96	0	0	0	0	0	0	0	0	0	0	0	0	0
1996-97	0	0	0	0	0	0	0	0	0	0	0	0	0
1997-98	0	0	0	0	0	0	0	0	0	0	0	0	0
1998-	0	0	0	0	0	0	0	0	0	0	0	0	0

WBAN : 40505

COOLING DEGREE DAYS (base 65°F) 1998 CHUUK, EASTERN CAROLINE IS., PC (PTKK)

YEAR	JAN	FEB	MAR	APR	MAY	JUN	JUL	AUG	SEP	OCT	NOV	DEC	ANNUAL
1969	493	432	514	486	525	503	492	504	489	518	511	530	5997
1970	516	478	551	528	527	509	531	525	509	506	517	532	6229
1971	517	465	515	507	507	487	482	519	491	509	517	525	6041
1972	500	456	506	487	521	499	492	493	496	521	519	518	6008
1973	520	463	540	509	540	529	523	529	507	503	523	527	6213
1974	508	459	525	511	536	499	507	512	502	513	508	526	6106
1975	522	475	524	522	514	494	501	506	489	501	473	506	6027
1976	507	466	509	483	500	483	512	493	469	524	505	524	5975
1977	515	471	516	517	534	531	529	529	508	538	491	540	6219
1978	514	475	545	520	537	515	546	543	517	528	511	534	6285
1979	533	489	531	511	531	527	529	512	531	513	504	517	6228
1980	507	483	527	531	534	512	496	505	500	483	495	509	6082
1981	501	481	540	534	565	518	557	547	529	543	530	546	6391
1982	557	488	527	538	547	526	540	534	523	533	533	541	6387
1983	497	469	527	540	594	558	528	550	535	550	538	548	6434
1984	513	487	548	556	582	504	590	521	534	530	539	566	6470
1985	517	502	560	517	556	538	526	532	507	550	543	553	6401
1986	530	453	526	542	563	534	538	552	507	537	516	528	6326
1987	530	505	528	512	591	538	509	512	536	565	540	554	6420
1988	542	496	593	567	552	536	556	559	534	536	545	530	6546
1989	555	506	538	503	533	510	520	516	524	536	521	529	6291
1990	533	487	531	527	543	524	516	498	515	531	516	539	6260
1991	516	450	521	524	547	528	529	534	486	532	508	537	6212
1992	512	472	542	540	571	535	542	517	518	546	510	510	6315
1993	498	464	506	507	538	497	545	505	494	519	518	514	6105
1994	519	453	540	529	526	523	498	511	505	529	521	511	6165
1995	513	461	537	495	546	509	509	518	518	533	537	536	6212
1996	514	491	526	501	529	519	542	522	483	509	478	523	6137
1997	512	432	479	503	526	456	482	451	448	487	497	519	5792
1998	503	439	513	542	536	497	508	495	481	481	455	466	5916

SNOWFALL (inches) 1998 CHUUK, EASTERN CAROLINE IS., PC (PTKK)

YEAR	JUL	AUG	SEP	OCT	NOV	DEC	JAN	FEB	MAR	APR	MAY	JUN	TOTAL
1971-72	0.0	0.0	0.0	0.0	0.0	0.0	0.0	0.0	0.0	0.0	0.0	0.0	0.0
1972-73	0.0	0.0	0.0	0.0	0.0	0.0	0.0	0.0	0.0	0.0	0.0	0.0	0.0
1973-74	0.0	0.0	0.0	0.0	0.0	0.0	0.0	0.0	0.0	0.0	0.0	0.0	0.0
1974-75	0.0	0.0	0.0	0.0	0.0	0.0	0.0	0.0	0.0	0.0	0.0	0.0	0.0
1975-76	0.0	0.0	0.0	0.0	0.0	0.0	0.0	0.0	0.0	0.0	0.0	0.0	0.0
1976-77	0.0	0.0	0.0	0.0	0.0	0.0	0.0	0.0	0.0	0.0	0.0	0.0	0.0
1977-78	0.0	0.0	0.0	0.0	0.0	0.0	0.0	0.0	0.0	0.0	0.0	0.0	0.0
1978-79	0.0	0.0	0.0	0.0	0.0	0.0	0.0	0.0	0.0	0.0	0.0	0.0	0.0
1979-80	0.0	0.0	0.0	0.0	0.0	0.0	0.0	0.0	0.0	0.0	0.0	0.0	0.0
1980-81	0.0	0.0	0.0	0.0	0.0	0.0	0.0	0.0	0.0	0.0	0.0	0.0	0.0
1981-82	0.0	0.0	0.0	0.0	0.0	0.0	0.0	0.0	0.0	0.0	0.0	0.0	0.0
1982-83	0.0	0.0	0.0	0.0	0.0	0.0	0.0	0.0	0.0	0.0	0.0	0.0	0.0
1983-84	0.0	0.0	0.0	0.0	0.0	0.0	0.0	0.0	0.0	0.0	0.0	0.0	0.0
1984-85	0.0	0.0	0.0	0.0	0.0	0.0	0.0	0.0	0.0	0.0	0.0	0.0	0.0
1985-86	0.0	0.0	0.0	0.0	0.0	0.0	0.0	0.0	0.0	0.0	0.0	0.0	0.0
1986-87	0.0	0.0	0.0	0.0	0.0	0.0	0.0	0.0	0.0	0.0	0.0	0.0	0.0
1987-88	0.0	0.0	0.0	0.0	0.0	0.0	0.0	0.0	0.0	0.0	0.0	0.0	0.0
1988-89	0.0	0.0	0.0	0.0	0.0	0.0	0.0	0.0	0.0	0.0	0.0	0.0	0.0
1989-90	0.0	0.0	0.0	0.0	0.0	0.0	0.0	0.0	0.0	0.0	0.0	0.0	0.0
1990-91	0.0	0.0	0.0	0.0	0.0	0.0	0.0	0.0	0.0	0.0	0.0	0.0	0.0
1991-92	0.0	0.0	0.0	0.0	0.0	0.0	0.0	0.0	0.0	0.0	0.0	0.0	0.0
1992-93	0.0	0.0	0.0	0.0	0.0	0.0	0.0	0.0	0.0	0.0	0.0	0.0	0.0
1993-94	0.0	0.0	0.0	0.0	0.0	0.0	0.0	0.0	0.0	0.0	0.0	0.0	0.0
1994-95	0.0	0.0	0.0	0.0	0.0	0.0	0.0	0.0	0.0	0.0	0.0	0.0	0.0
1995-96	0.0	0.0	0.0	0.0	0.0	0.0	0.0	0.0	0.0	0.0	0.0	0.0	0.0
1996-97	0.0	0.0	0.0	0.0	0.0	0.0	0.0	0.0	0.0	0.0	0.0	0.0	0.0
1997-98	0.0	0.0	0.0	0.0	0.0	0.0	0.0	0.0	0.0	0.0	0.0	0.0	0.0
1998-	0.0	0.0	0.0	0.0	0.0	0.0	0.0	0.0	0.0	0.0	0.0	0.0	0.0
POR= 48 YRS	0.0	0.0	0.0	0.0	0.0	0.0	0.0	0.0	0.0	0.0	0.0	0.0	0.0

WBAN : 40505

REFERENCE NOTES:

<p>PAGE 1: THE TEMPERATURE GRAPH SHOWS NORMAL MAXIMUM AND NORMAL MINIMUM DAILY TEMPERATURES (SOLID CURVES) AND THE ACTUAL DAILY HIGH AND LOW TEMPERATURES (VERTICAL BARS).</p> <p>PAGE 2 AND 3: H/C INDICATES HEATING AND COOLING DEGREE DAYS. RH INDICATES RELATIVE HUMIDITY W/O INDICATES WEATHER AND OBSTRUCTIONS S INDICATES SUNSHINE. PR INDICATES PRESSURE. CLOUDINESS ON PAGE 3 IS THE SUM OF THE CEILOMETER AND SATELLITE DATA NOT TO EXCEED EIGHT EIGHTHS(OKTAS).</p> <p>GENERAL: T INDICATES TRACE PRECIPITATION, AN AMOUNT GREATER THAN ZERO BUT LESS THAN THE LOWEST REPORTABLE VALUE. + INDICATES THE VALUE ALSO OCCURS ON EARLIER DATES. BLANK ENTRIES DENOTE MISSING OR UNREPORTED DATA. NORMALS ARE 30-YEAR AVERAGES (1961 - 1990). ASOS INDICATES AUTOMATED SURFACE OBSERVING SYSTEM. PM INDICATES THE LAST DAY OF THE PREVIOUS MONTH. POR (PERIOD OF RECORD) BEGINS WITH THE JANUARY DATA MONTH AND IS THE NUMBER OF YEARS USED TO COMPUTE THE MEAN. INDIVIDUAL MONTHS WITHIN THE POR MAY BE MISSING. WHEN THE POR FOR A NORMAL IS LESS THAN 30 YEARS, THE NORMAL IS PROVISIONAL AND IS BASED ON THE NUMBER OF YEARS INDICATED. 0.* OR * INDICATES THE VALUE OR MEAN-DAYS-WITH IS BETWEEN 0.00 AND 0.05. CLOUDINESS FOR ASOS STATIONS DIFFERS FROM THE NON-ASOS OBSERVATION TAKEN BY A HUMAN OBSERVER. ASOS STATION CLOUDINESS IS BASED ON TIME-AVERAGED CEILOMETER DATA FOR CLOUDS AT OR BELOW 12,000 FEET AND ON SATELLITE DATA FOR CLOUDS ABOVE 12,000 FEET. THE NUMBER OF DAYS WITH CLEAR, PARTLY CLOUDY, AND CLOUDY CONDITIONS FOR ASOS STATIONS IS THE SUM OF THE CEILOMETER AND SATELLITE DATA FOR THE SUNRISE TO SUNSET PERIOD.</p>	<p>GENERAL CONTINUED: CLEAR INDICATES 0 - 2 OKTAS, PARTLY CLOUDY INDICATES 3 - 6 OKTAS, AND CLOUDY INDICATES 7 OR 8 OKTAS. WHEN AT LEAST ONE OF THE ELEMENTS (CEILOMETER OR SATELLITE) IS MISSING, THE DAILY CLOUDINESS IS NOT COMPUTED. WIND DIRECTION IS RECORDED IN TENS OF DEGREES (2 DIGITS) CLOCKWISE FROM TRUE NORTH. "00" INDICATES CALM. "36" INDICATES TRUE NORTH. RESULTANT WIND IS THE VECTOR AVERAGE OF THE SPEED AND DIRECTION. AVERAGE TEMPERATURE IS THE SUM OF THE MEAN DAILY MAXIMUM AND MINIMUM TEMPERATURE DIVIDED BY 2. SNOWFALL DATA COMPRISE ALL FORMS OF FROZEN PRECIPITATION, INCLUDING HAIL. A HEATING (COOLING) DEGREE DAY IS THE DIFFERENCE BETWEEN THE AVERAGE DAILY TEMPERATURE AND 65° F. DRY BULB IS THE TEMPERATURE OF THE AMBIENT AIR. DEW POINT IS THE TEMPERATURE TO WHICH THE AIR MUST BE COOLED TO ACHIEVE 100 PERCENT RELATIVE HUMIDITY. WET BULB IS THE TEMPERATURE THE AIR WOULD HAVE IF THE MOISTURE CONTENT WAS INCREASED TO 100 PERCENT RELATIVE HUMIDITY.</p> <p>ON JULY 1, 1996, THE NATIONAL WEATHER SERVICE BEGAN USING THE "METAR" OBSERVATION CODE THAT WAS ALREADY EMPLOYED BY MOST OTHER NATIONS OF THE WORLD. THE MOST NOTICEABLE DIFFERENCE IN THIS ANNUAL PUBLICATION WILL BE THE CHANGE IN UNITS FROM TENTHS TO EIGHTHS(OKTAS) FOR REPORTING THE AMOUNT OF SKY COVER.</p>
---	---

1998
CHUUK, EASTERN CAROLINE IS.,
PACIFIC (PTKK)

Truk Atoll, located in the Western Pacific about 500 miles north of the equator, is comprised of numerous small coral and high volcanic islands scattered over a large lagoon and surrounded by a 125 mile-long barrier reef. Moen Island, roughly triangular in shape and 7.3 square miles in area, is the second largest of the 19 volcanic islands. Its highest point is Mount Teroken, which rises to an elevation of 1,214 feet, and has dense, tropical forests covering its upper reaches and small streams descending its slopes.

The Weather Station is situated on northwestern Moen about 300 feet east of Truk Lagoon and immediately south of the approach end of the airport runway.

A steep-sided 754 foot hill lies a short distance northeast of the Weather Station, and a northeast to southwest trending mountain ridge, of which Mount Teroken is part, to the east. In funneling between these high points, the northeasterly trade winds are deflected to north-northeasterly, and at times generate local eddies with a southerly component near the Weather Station.

From about November to June the climate of Truk is chiefly influenced by the northeasterly trade winds, with average monthly speeds of 8 to 12 miles per hour. By about April, however, the trades begin to weaken, and by July have given way to the lighter and more variable winds of the doldrums. Between July and November the island is frequently under the influence of the Intertropical Convergence Zone which has moved northward into the area. This is also the season when moist southerly winds and tropical disturbances, many of them associated with the ITCZ, are most frequent and when humidities are often oppressively high.

Rainfall at Truk averages about 140 inches a year. A relatively dry period occurs from January to March, when monthly averages run below 8.50 inches. February is the driest month. Rainfall varies widely from year to year and seasonally. Annual totals at Truk have been as low as 120 inches and as high as 180 inches, while even during the ordinarily drier season of January to March, the monthly rainfall has been as much as 24 inches in individual years. However, it has also been less than 1 inch, so that extended dry spells are not uncommon.

The temperature is remarkably uniform throughout the year, with less than one-half degree separating the averages of the warmest and coolest months. With highs in the mid 80s and lows in the mid 70s, the daily range is about 10 degrees. Temperatures below 70 degrees are rare. Every month has had a high temperature of at least 90 degrees. Humidities are high throughout the year.

Although the major typhoon tracks of the Western Pacific lie well to the north and west of Truk, several of the storms have passed close to or over the island within recent years. The storms have caused widespread damage to buildings and to coconut palms and other crops, as well as wave damage to shorelines and coastal structures.

STATION LOCATION

CHUUK, CAROLINE ISLAND, PACIFIC

LOCATION	OCCUPIED FROM	OCCUPIED TO	AIRLINE DISTANCES AND DIRECTIONS FROM PREVIOUS LOCATION	LATITUDE NORTH	LONGITUDE EAST	ELEVATION ABOVE											REMARKS	
						SEA LEVEL	GROUND											
							WIND	EMERGENCY	EMERGENCY	EMERGENCY	EMERGENCY	EMERGENCY	EMERGENCY	EMERGENCY	EMERGENCY	EMERGENCY		EMERGENCY
Eten Island (German)	1903	1913		7°21'	151°53'													Rainfall observations taken intermittently.
Dublon Island (Japanese)	5/1919	12/1921		7°23'	151°53'		17	17									A2	4-hourly observations. A - 4 inch gage.
Dublon Island (Japanese)	1/1927	12/1938	1 mi. SW	7°23'	151°54'		10	5										
Dublon Island	1/1939	12/1940	-	7°23'	151°54'	358												
Moen Island Airport	12/18/45	1/1/54	6 mi. NNW	7°28'	151°51'	8	25	4	4								a4	U.S. Navy Station until 7/1/51. a - 4 inch gage.
Moen Island Airport	1/1/54	1/17/58	No change	7°28'	151°51'	8	25	4	4								4	
Moen Island Airport	1/17/58	6/28/58	450 ft.SSW	7°28'	151°51'	5	25	4	4								3	
Moen Island Airport	6/28/58	6/5/84	No change	7°28'	151°51'	5	b23	5	5	%7	3	NA	3	NA	NA	NA	3	b - 34 feet to 1/28/64 and 24 feet to 1/31/67. Minor move 4/12/79. % - Commissioned 2/19/62.
Truk International AP Chuuk International AP	6/5/84	Present	720 ft.WSW	7°27'	151°50'	5	23	6	5	7	3	NA	3	NA	NA	NA	3	Instruments commissioned 6/12/84. Changed from Truk to Chuuk 5/21/90.

* Type
M = AMOS
T = AUTOB
S = ASOS
W = AWOS

SUBSCRIPTION: Price and ordering information available through: National Climatic Data Center, Federal Building, Asheville, North Carolina 28801. INQUIRIES/COMMENTS CALL: (828) 271-4800

National Climatic Data Center
151 Patton Avenue, Rm 120
Asheville NC 28801-5001

OFFICIAL BUSINESS
PENALTY FOR PRIVATE USE \$300
FORWARD AND ADDRESS CORRECTION

FIRST CLASS
POSTAGE & FEES PAID
United States Department of Commerce
NOAA Permit No. G - 19