

1999

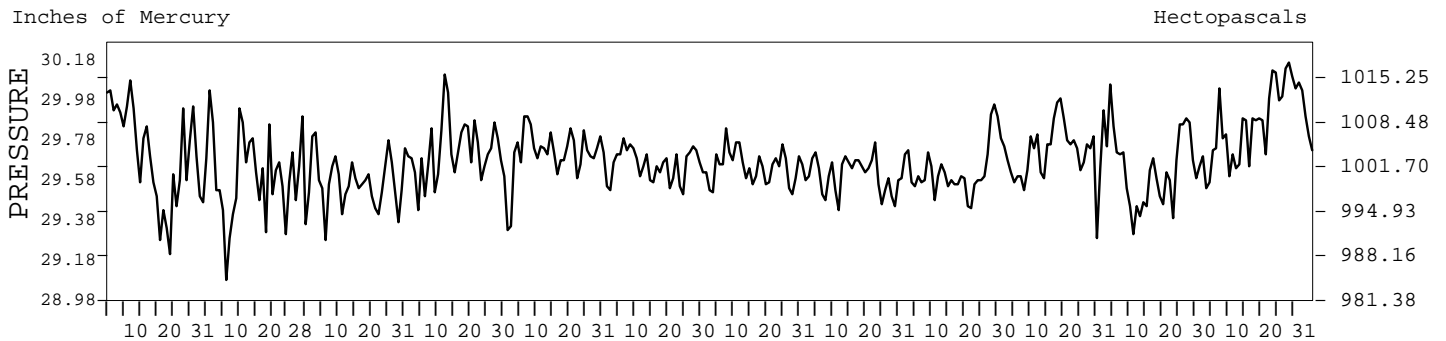
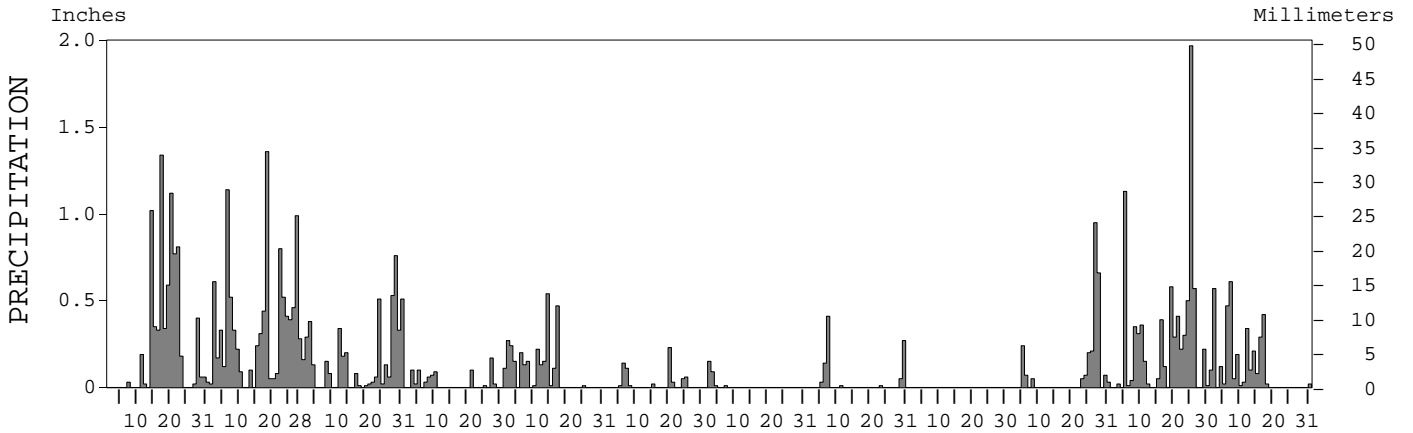
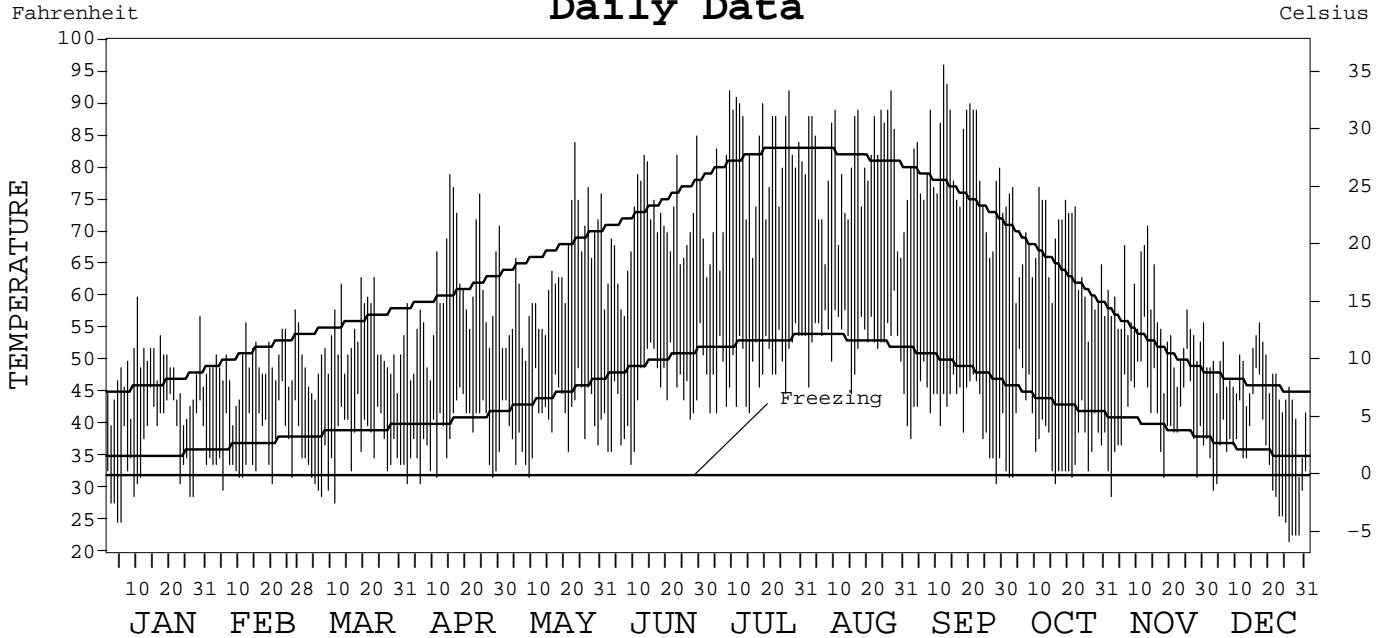
LOCAL CLIMATOLOGICAL DATA
ANNUAL SUMMARY WITH COMPARATIVE DATA



ISSN 0198-4136

EUGENE,
OREGON (EUG)

Daily Data



I CERTIFY THAT THIS IS AN OFFICIAL PUBLICATION OF THE NATIONAL OCEANIC AND ATMOSPHERIC ADMINISTRATION, AND IS COMPILED FROM RECORDS ON FILE AT THE NATIONAL CLIMATIC DATA CENTER.

Thomas R. Karl

NATIONAL OCEANIC AND ATMOSPHERIC ADMINISTRATION	NATIONAL ENVIRONMENTAL AND INFORMATION SERVICE	NATIONAL SATELLITE, DATA, AND INFORMATION SERVICE	NATIONAL CLIMATIC DATA CENTER ASHEVILLE, NORTH CAROLINA	DIRECTOR NATIONAL CLIMATIC DATA CENTER
---	---	---	---	---

METEOROLOGICAL DATA FOR 1999

EUGENE, OR (EUG)

LATITUDE: 44° 08' 00" N LONGITUDE: 123° 12' 52" W ELEVATION (FT): GRND: 375 BARO: 375 TIME ZONE: PACIFIC (UTC + 8) WBAN: 24221

	ELEMENT	JAN	FEB	MAR	APR	MAY	JUN	JUL	AUG	SEP	OCT	NOV	DEC	YEAR	
TEMPERATURE °F	MEAN DAILY MAXIMUM	47.9	49.8	52.2	60.6	63.1	70.6	79.7	80.1	80.5	66.9	56.6	46.6	62.9	
	HIGHEST DAILY MAXIMUM	60	58	63	79	84	85	92	92	96	77	71	56	96	
	DATE OF OCCURRENCE	10	27	23+	15	23	29	27+	27	12	11+	13	17	SEP 12	
	MEAN DAILY MINIMUM	36.2	36.8	36.3	38.2	41.2	45.0	49.3	53.6	42.6	38.0	41.8	34.2	41.1	
	LOWEST DAILY MINIMUM	25	30	28	31	32	34	42	45	31	31	29	22	22	
	DATE OF OCCURRENCE	05+	05	11	06+	09	09	15+	31+	28	16	02	26	DEC 26	
	AVERAGE DRY BULB	42.1	43.3	44.3	49.4	52.2	57.8	64.5	66.9	61.6	52.5	49.2	40.4	52.0	
	MEAN WET BULB	40.5	41.4		44.5		52.7		59.3	52.7	47.8	47.3	39.2		
	MEAN DEW POINT	38.7	38.8		39.7		47.7		54.6	44.8	43.1	45.5	37.5		
	NUMBER OF DAYS WITH:														
	MAXIMUM ≥ 90°	0	0	0	0	0	0	5	1	3	0	0	0	9	
	MAXIMUM ≤ 32°	0	0	0	0	0	0	0	0	0	0	0	1	1	
	MINIMUM ≤ 32°	10	5	6	4	1	0	0	0	1	4	3	12	46	
MINIMUM ≤ 0°	0	0	0	0	0	0	0	0	0	0	0	0	0		
H/C	HEATING DEGREE DAYS	706	602	637	462	391	211	66	30	120	383	468	754	4830	
	COOLING DEGREE DAYS	0	0	0	0	0	5	56	97	26	0	0	0	184	
RH	MEAN (PERCENT)	88	84	83	73	78	71	65	70	60	75	89	90	77	
	HOUR 04 LST	93	89	92	88	92	89	87	89	88	91	93	93	90	
	HOUR 10 LST	90	85	81	68	72	64	58	65	52	70	87	91	74	
	HOUR 16 LST	81	76	69	53	62	51	41	49	29	51	80	84	60	
	HOUR 22 LST	92	88	86	80	87	80	74	78	65	81	92	92	83	
S	PERCENT POSSIBLE SUNSHINE														
W/O	NUMBER OF DAYS WITH:														
	HEAVY FOG (VISBY ≤ 1/4 MI)	11	2	4	4	0	1	0	3	3	6	7	11	52	
	THUNDERSTORMS	1	0	3	0	0	0	0	2	0	0	0	0	6	
CLOUDINESS	SUNRISE-SUNSET: (OKTAS)														
	CEILOMETER (≤ 12,000 FT.)														
	SATELLITE (> 12,000 FT.)														
	MIDNIGHT-MIDNIGHT: (OKTAS)														
	CEILOMETER (≤ 12,000 FT.)														
	SATELLITE (> 12,000 FT.)														
NUMBER OF DAYS WITH:															
CLEAR															
PARTLY CLOUDY															
CLOUDY															
PR	MEAN STATION PRESS. (IN.)	29.71	29.60	29.57	29.73	29.71	29.66	29.65	29.61	29.63	29.73	29.61	29.89	29.68	
	MEAN SEA-LEVEL PRESS. (IN.)	30.11	30.00		30.13		30.06		30.01	30.03	30.14	30.02	30.30		
WINDS	RESULTANT SPEED (MPH)	5.0	9.3	3.7	1.5	1.9	1.7	1.9	1.9	4.0	0.5	4.0	5.1	2.0	
	RES. DIR. (TENS OF DEGS.)	16	17	18	27	24	25	29	25	35	33	18	18	19	
	MEAN SPEED (MPH)	7.6	10.6	7.6	7.1	7.3	6.1	7.7	6.4	7.3	6.6	6.9	7.2	7.4	
	PREVAIL. DIR. (TENS OF DEGS.)	16	16	17	35	35	36	34	21	36	01	17	18	16	
	MAXIMUM 2-MINUTE WIND:														
	SPEED (MPH)	33	37	37	24	24	20	22	22	24	34	25	29	37	
	DIR. (TENS OF DEGS.)	17	21	22	22	24	23	21	27	36	16	17	25	22	
	DATE OF OCCURRENCE	29	06	02	09	06	24+	20+	30	11	27	09	02	MAR 02	
	MAXIMUM 5-SECOND WIND:														
	SPEED (MPH)	39	46	52	32	31	28	26	29	28	43	31	36	52	
DIR. (TENS OF DEGS.)	18	16	17	29	25	35	01	35	36	16	16	24	17		
DATE OF OCCURRENCE	29	06	02	08	06	27	11	26	11	27	09	02	MAR 02		
PRECIPITATION	WATER EQUIVALENT:														
	TOTAL (IN.)	7.66	10.03	4.97	0.77	2.90	0.66	0.26	0.92	0.00	2.60	8.02	3.65	42.44	
	GREATEST 24-HOUR (IN.)	1.47	1.48	0.97	0.17	0.58	0.26	0.15	0.43	0.00	1.31	2.46	0.94	2.46	
	DATE OF OCCURRENCE	17-18	17-18	28-29	27	16-17	20-21	02	06-07		27-28	25-26	06-07	NOV 25-26	
	NUMBER OF DAYS WITH:														
	PRECIPITATION ≥ 0.01	18	25	23	11	16	9	4	7	0	11	22	18	164	
PRECIPITATION ≥ 0.10	12	20	14	4	13	3	1	3	0	5	16	11	102		
PRECIPITATION ≥ 1.00	3	2	0	0	0	0	0	0	0	0	2	0	7		
SNOWFALL	SNOW, ICE PELLETS, HAIL:														
	TOTAL (IN.)														
	GREATEST 24-HOUR (IN.)														
	DATE OF OCCURRENCE														
	MAXIMUM SNOW DEPTH (IN.)														
	DATE OF OCCURRENCE														
NUMBER OF DAYS WITH:															
SNOWFALL ≥ 1.0															

NORMALS, MEANS, AND EXTREMES

EUGENE, OR (EUG)

LATITUDE: 44° 08' 00" N LONGITUDE: 123° 12' 52" W ELEVATION (FT): GRND: 375 BARO: 375 TIME ZONE: PACIFIC (UTC + 8) WBAN: 24221

		POR	JAN	FEB	MAR	APR	MAY	JUN	JUL	AUG	SEP	OCT	NOV	DEC	YEAR
TEMPERATURE °F	NORMAL DAILY MAXIMUM	30	46.4	51.4	55.9	60.5	67.1	74.2	81.7	81.8	76.2	64.6	52.4	46.2	63.2
	MEAN DAILY MAXIMUM	52	46.2	51.2	55.4	60.7	67.2	73.8	82.1	81.9	75.2	64.4	52.7	46.6	63.1
	HIGHEST DAILY MAXIMUM	57	67	72	77	86	93	102	105	108	103	94	76	68	108
	YEAR OF OCCURRENCE		1975	1995	1995	1957	1987	1992	1998	1981	1988	1980	1975	1979	AUG 1981
	MEAN OF EXTREME MAXS.	52	59.2	63.4	68.0	75.4	83.6	89.9	96.3	95.6	90.7	79.6	65.0	59.5	77.2
	NORMAL DAILY MINIMUM	30	35.2	37.0	38.9	40.6	44.5	49.7	52.8	53.2	49.3	43.5	39.7	35.9	43.4
	MEAN DAILY MINIMUM	52	33.5	35.4	36.9	39.4	43.4	48.1	51.3	51.4	46.6	41.7	38.1	34.7	41.7
	LOWEST DAILY MINIMUM	57	-4	-3	20	27	28	32	39	38	0	19	12	-12	-12
	YEAR OF OCCURRENCE		1957	1950	1956	1983	1954	1976	1986	1969	1996	1971	1978	1972	DEC 1972
	MEAN OF EXTREME MINS.	52	19.6	23.4	27.9	30.7	34.2	38.9	43.0	43.2	36.9	30.6	26.2	21.8	31.4
	NORMAL DRY BULB	30	40.8	44.2	47.4	50.6	55.8	62.0	67.3	67.6	62.8	54.1	46.1	41.1	53.3
	MEAN DRY BULB	52	39.8	43.2	46.2	50.0	55.3	61.1	66.7	66.6	60.9	53.2	45.3	40.6	52.4
	MEAN WET BULB	15	39.4	40.7	44.1	47.1	51.3	54.8	58.6	58.4	51.6	49.2	43.9	35.5	47.9
	MEAN DEW POINT	15	37.5	38.2	41.0	43.4	47.3	50.1	52.6	52.4	46.3	45.6	42.1	33.9	44.2
	NORMAL NO. DAYS WITH:														
MAXIMUM ≥ 90°	30	0.0	0.0	0.0	0.0	0.2	1.3	6.3	5.8	2.2	0.1	0.0	0.0	15.9	
MAXIMUM ≤ 32°	30	1.5	0.2	0.0	0.0	0.0	0.0	0.0	0.0	0.0	0.0	0.2	1.2	3.1	
MINIMUM ≤ 32°	30	13.6	9.1	6.3	2.7	0.4	*	0.0	0.0	0.1	2.0	6.6	11.5	52.3	
MINIMUM ≤ 0°	30	0.0	0.0	0.0	0.0	0.0	0.0	0.0	0.0	0.0	0.0	0.0	0.2	0.2	
H/C	NORMAL HEATING DEG. DAYS	30	750	582	546	432	285	121	38	30	116	338	567	741	4546
	NORMAL COOLING DEG. DAYS	30	0	0	0	0	0	31	109	110	50	0	0	0	300
RH	NORMAL (PERCENT)	30	88	85	80	77	74	70	64	65	70	81	88	89	78
	HOUR 04 LST	30	91	91	90	90	90	89	87	87	89	93	93	92	90
	HOUR 10 LST	30	88	86	79	72	67	64	58	61	66	81	88	89	75
	HOUR 16 LST	30	79	72	64	58	54	49	39	40	44	61	79	83	60
	HOUR 22 LST	30	90	89	85	83	81	79	72	73	76	87	92	91	83
S	PERCENT POSSIBLE SUNSHINE														
W/O	MEAN NO. DAYS WITH:														
	HEAVY FOG (VISBY ≤ 1/4 MI)	57	9.0	6.6	3.7	2.1	1.2	0.8	0.4	0.9	4.3	10.6	9.7	9.6	58.9
	THUNDERSTORMS	57	0.2	0.1	0.2	0.5	0.9	0.6	0.6	0.7	0.5	0.2	0.1	0.2	4.8
CLOUDINESS	MEAN:														
	SUNRISE-SUNSET (OKTAS)	1			7.2						4.0				
	MIDNIGHT-MIDNIGHT (OKTAS)	1										3.2			
	MEAN NO. DAYS WITH:														
	CLEAR	1	1.0	1.0	5.0		2.0	2.0							
PARTLY CLOUDY	1	1.0	1.0			4.0	2.0								
CLOUDY	1	1.0	4.0	13.0		5.0									
PR	MEAN STATION PRESSURE (IN)	25	29.69	29.69	29.61	29.70	29.70	29.70	29.70	29.60	29.60	29.70	29.68	29.73	29.68
	MEAN SEA-LEVEL PRES. (IN)	15	30.10	30.08	30.07	30.07	30.05	30.01	30.06	30.03	30.04	30.10	30.10	30.16	30.07
WINDS	MEAN SPEED (MPH)	26	7.8	7.7	7.8	7.7	7.3	7.5	8.1	7.7	7.4	6.7	7.8	8.0	7.6
	PREVAIL. DIR (TENS OF DEGS)	20	18	18	18	18	36	36	36	36	36	18	18	18	36
	MAXIMUM 2-MINUTE:														
	SPEED (MPH)	4	33	39	37	36	31	24	26	24	28	39	41	40	41
	DIR. (TENS OF DEGS)		17	15	22	16	20	23	18	19	20	23	17	21	17
	YEAR OF OCCURRENCE		1999	1996	1999	1996	1997	1997	1996	1997	1997	1996	1998	1996	NOV 1998
	MAXIMUM 5-SECOND:														
	SPEED (MPH)	4	39	48	52	46	37	30	30	30	34	52	48	52	52
DIR. (TENS OF DEGS)		18	16	17	21	20	21	20	36	16	23	18	20	17	
YEAR OF OCCURRENCE		1999	1996	1999	1997	1997	1997	1996	1997	1997	1996	1998	1996	MAR 1999	
PRECIPITATION	NORMAL (IN)	30	7.91	5.64	5.52	3.11	2.16	1.43	0.51	1.08	1.67	3.41	8.32	8.61	49.37
	MAXIMUM MONTHLY (IN)	57	15.36	16.89	12.46	7.85	6.92	4.76	3.00	5.79	4.65	12.66	20.48	20.99	20.99
	YEAR OF OCCURRENCE		1995	1996	1974	1993	1993	1952	1987	1968	1986	1950	1973	1964	DEC 1964
	MINIMUM MONTHLY (IN)	57	0.31	0.86	0.79	0.49	0.14	T	0.00	0.00	0.00	0.11	1.20	1.24	0.00
	YEAR OF OCCURRENCE		1985	1964	1965	1985	1992	1951	1967	1967	1999	1988	1956	1976	SEP 1999
	MAXIMUM IN 24 HOURS (IN)	57	4.88	4.81	2.44	2.38	2.37	2.36	2.44	1.92	1.68	3.85	5.07	5.15	5.15
	YEAR OF OCCURRENCE		1974	1984	1963	1992	1972	1952	1987	1983	1981	1955	1996	1981	DEC 1981
	NORMAL NO. DAYS WITH:														
PRECIPITATION ≥ 0.01	30	16.8	14.7	16.1	12.4	9.7	6.3	2.7	4.0	6.1	10.4	17.1	17.6	133.9	
PRECIPITATION ≥ 1.00	30	2.4	1.2	1.2	0.5	0.2	0.1	*	0.2	0.3	0.5	2.6	2.4	11.6	
SNOWFALL	NORMAL (IN)	30	3.1	0.9	0.2	T	T	0.0	0.0	0.0	0.0	T	0.2	1.7	6.1
	MAXIMUM MONTHLY (IN)	53	47.1	8.8	10.8	T	T	T	0.0	0.0	T	T	6.0	10.2	47.1
	YEAR OF OCCURRENCE		1969	1990	1951	1995	1986	1995			1986	1984	1955	1964	JAN 1969
	MAXIMUM IN 24 HOURS (IN)	53	22.9	5.7	4.9	T	T	T	0.0	0.0	T	T	5.0	6.3	22.9
	YEAR OF OCCURRENCE		1969	1993	1951	1995	1986	1995			1986	1984	1955	1972	JAN 1969
	MAXIMUM SNOW DEPTH (IN)	48	34	16	4	0	0	0	0	0	0	0	5	7	34
	YEAR OF OCCURRENCE		1969	1969	1960								1955	1972	JAN 1969
	NORMAL NO. DAYS WITH:														
SNOWFALL ≥ 1.0	30	0.6	0.3	0.1	0.0	0.0	0.0	0.0	0.0	0.0	0.0	0.2	0.6	1.8	

PRECIPITATION (inches) 1999 EUGENE, OR (EUG)

YEAR	JAN	FEB	MAR	APR	MAY	JUN	JUL	AUG	SEP	OCT	NOV	DEC	ANNUAL
1970	14.38	3.37	2.45	3.04	0.80	0.76	T	T	1.19	4.30	8.23	11.57	50.09
1971	10.83	5.11	7.99	4.49	2.52	3.10	T	1.33	3.04	3.32	9.48	9.46	60.67
1972	12.48	6.52	7.63	5.80	2.94	1.91	0.02	1.70	2.71	1.31	3.76	10.78	57.56
1973	6.20	2.09	5.18	1.67	0.86	1.35	T	0.80	2.48	2.37	20.48	11.82	55.30
1974	12.80	8.42	12.46	2.47	1.12	0.37	1.37	0.42	0.08	1.59	6.42	9.26	56.78
1975	6.93	6.79	7.56	2.90	2.16	0.88	1.18	2.09	T	5.69	8.47	7.12	51.77
1976	9.82	7.66	6.23	1.89	0.94	0.21	0.42	2.04	1.13	1.87	1.33	1.24	34.78
1977	1.11	5.05	4.66	1.47	2.84	0.97	0.11	1.70	2.39	2.87	9.14	14.60	46.91
1978	9.05	3.25	1.68	6.56	2.12	0.74	0.72	2.17	3.45	0.29	6.61	2.86	39.50
1979	2.98	9.52	3.12	4.71	2.61	0.56	0.41	3.46	2.32	8.12	6.09	7.38	51.28
1980	7.45	4.68	5.11	4.20	1.39	2.06	0.39	0.02	0.75	1.90	8.66	14.73	51.34
1981	2.13	4.35	4.16	2.69	3.27	3.51	0.08	T	3.15	5.42	9.51	17.63	55.90
1982	9.31	8.14	4.88	6.89	0.26	1.92	0.54	0.72	2.81	3.95	7.07	13.53	60.02
1983	6.75	12.28	10.58	3.35	1.81	1.78	1.77	3.19	0.54	1.36	13.13	7.47	64.01
1984	2.11	9.58	6.36	5.41	3.91	3.88	0.27	0.03	0.94	6.05	18.67	4.56	61.77
1985	0.31	5.15	5.65	0.49	1.53	2.51	1.37	0.04	2.13	4.83	6.31	3.51	33.83
1986	6.97	14.22	4.41	1.85	3.21	0.33	0.42	0.04	4.65	2.46	11.04	3.30	52.90
1987	9.66	4.47	2.81	2.04	2.00	0.07	3.00	0.26	0.20	0.24	4.65	15.40	44.80
1988	8.72	1.59	4.78	5.65	3.71	2.37	0.11	0.04	1.22	0.11	14.27	5.18	47.75
1989	6.68	3.45	10.93	1.73	3.85	1.03	0.49	1.21	0.64	2.95	5.00	2.70	40.66
1990	15.09	6.32	3.43	2.44	2.99	2.01	0.88	2.38	0.28	7.59	7.59	4.47	55.47
1991	3.73	3.58	9.79	5.22	6.03	0.99	0.64	0.68	0.10	1.93	10.47	5.28	48.44
1992	4.57	5.15	2.10	7.82	0.14	1.68	1.32	0.10	0.99	4.60	6.54	12.59	47.60
1993	6.85	2.64	8.58	7.85	6.92	3.70	1.14	1.80	T	1.45	1.98	10.82	53.73
1994	5.50	5.58	5.58	2.02	1.58	1.14	0.02	T	2.04	7.49	9.58	6.10	46.63
1995	15.36	3.74	6.42	5.59	2.10	2.33	1.13	0.98	1.10	3.91	9.47	13.43	65.56
1996	14.74	16.89	2.45	3.91	3.50	0.39	0.54	0.09	2.50	4.50	12.06	14.95	76.52
1997	5.93	2.06	7.03	3.30	2.64	1.88	0.10	1.59	3.22	4.37	4.28	2.23	38.63
1998	8.08	6.21	5.13	2.61	4.98	0.79	T	T	0.35	2.34	11.35	8.53	50.37
1999	7.66	10.03	4.97	0.77	2.90	0.66	0.26	0.92	0.00	2.60	8.02	3.65	42.44
POR= 57 YRS	7.68	5.61	5.29	3.02	2.30	1.42	0.38	0.79	1.40	3.68	7.51	7.85	46.93

WBAN : 24221

AVERAGE TEMPERATURE (°F) 1999 EUGENE, OR (EUG)

YEAR	JAN	FEB	MAR	APR	MAY	JUN	JUL	AUG	SEP	OCT	NOV	DEC	ANNUAL
1970	42.5	44.5	46.8	46.9	56.1	65.4	69.9	67.6	60.2	52.6	45.6	40.0	53.2
1971	40.1	41.1	43.1	48.3	54.5	57.8	66.7	68.2	59.2	49.5	43.5	38.7	50.9
1972	37.9	43.5	48.6	46.6	56.9	60.9	69.0	69.1	59.0	51.1	47.0	34.3	52.0
1973	38.3	44.5	44.9	49.9	55.9	61.7	67.7	64.0	62.7	52.7	44.3	43.4	52.5
1974	39.3	43.2	49.5	52.6	56.1	63.9	67.9	68.9	67.6	55.0	48.7	45.7	54.9
1975	45.9	43.5	44.7	46.4	55.5	61.1	68.5	64.5	66.1	55.0	46.2	43.0	53.4
1976	42.0	41.9	44.3	48.8	54.6	58.1	67.7	66.1	63.8	54.0	47.6	37.7	52.2
1977	38.9	44.5	44.9	50.7	51.3	61.0	64.2	69.7	59.4	52.5	43.5	43.0	52.0
1978	42.5	44.2	48.4	48.1	52.7	62.5	66.4	66.1	59.6	53.0	39.3	35.2	51.5
1979	31.5	42.9	48.8	50.4	55.5	60.0	67.3	65.5	63.6	56.5	42.4	43.0	52.3
1980	35.7	42.9	45.5	50.8	53.2	57.5	66.8	63.5	61.9	54.1	46.4	42.3	51.7
1981	40.4	43.4	45.9	49.9	54.4	59.5	64.8	68.2	62.0	50.2	45.4	41.8	52.2
1982	36.2	41.3	44.1	46.4	53.9	62.2	64.4	66.5	60.9	52.2	40.8	39.3	50.7
1983	41.7	45.1	48.3	49.1	56.1	58.6	63.0	66.1	59.1	52.1	46.6	36.3	51.8
1984	40.5	44.2	48.5	47.9	53.2	58.3	65.9	66.0	60.8	50.8	43.8	37.3	51.4
1985	34.2	40.6	42.8	52.0	54.9	61.4	69.9	65.8	58.3	51.8	37.6	33.0	50.2
1986	43.5	44.7	50.5	48.5	55.3	63.6	63.1	69.9	58.8	54.4	46.5	39.9	53.2
1987	39.6	43.7	47.3	52.4	57.9	63.3	64.4	67.6	62.7	56.5	46.8	39.8	53.5
1988	39.3	44.1	46.8	51.7	54.3	60.7	67.9	66.5	63.0	57.2	47.0	40.6	53.3
1989	42.1	35.8	47.2	55.6	56.5	63.1	65.3	66.7	64.6	53.9	47.4	41.1	53.3
1990	43.1	41.5	48.8	53.4	55.2	62.1	70.4	69.6	64.8	52.1	46.9	34.1	53.5
1991	38.9	48.7	44.4	48.8	52.7	57.5	67.5	67.7	65.1	54.3	47.6	41.3	52.9
1992	44.0	47.5	50.3	54.1	60.1	65.1	68.3	68.9	62.9	54.5	45.9	39.5	55.1
1993	35.3	38.5	49.6	51.2	58.6	60.5	62.5	66.8	62.7	56.1	38.5	39.3	51.6
1994	42.3	41.7	48.1	53.0	58.1	61.0	69.7	66.7	64.7	53.2	42.9	42.8	53.7
1995	44.7	47.8	47.9	50.4	57.6	61.1	68.8	65.5	64.7	51.6	50.3	42.6	54.4
1996	41.8	42.5	47.3	52.1	52.8	59.3	69.5	66.7	61.9	51.9	45.3	42.4	52.8
1997	40.9	42.3	46.8	50.0	59.0	59.0	66.2	69.0	62.8	50.8	47.3	38.9	52.8
1998	44.2	45.4	47.0	49.5	53.2	59.8	69.2	67.8	63.8	52.0	47.3	39.6	53.2
1999	42.1	43.3	44.3	49.4	52.2	57.8	64.5	66.9	61.6	52.5	49.2	40.4	52.0
POR= 57 YRS	39.6	43.2	46.1	50.1	55.5	61.0	66.7	66.5	61.0	53.2	45.3	40.6	52.4

HEATING DEGREE DAYS (base 65°F) 1999 EUGENE, OR (EUG)

YEAR	JUL	AUG	SEP	OCT	NOV	DEC	JAN	FEB	MAR	APR	MAY	JUN	TOTAL
1970-71	11	11	135	374	576	769	767	664	671	496	318	212	5004
1971-72	60	23	169	474	638	811	834	617	503	547	256	123	5055
1972-73	23	27	202	424	536	945	825	567	615	444	276	132	5016
1973-74	29	77	90	374	614	666	790	604	472	364	270	84	4434
1974-75	29	16	25	305	480	589	585	595	623	548	294	138	4227
1975-76	18	56	40	302	557	676	707	664	636	478	316	210	4660
1976-77	10	38	58	340	518	840	801	567	615	422	417	126	4752
1977-78	68	20	178	385	637	675	690	576	508	503	375	102	4717
1978-79	52	48	165	366	763	919	1029	614	496	432	288	159	5331
1979-80	33	19	50	257	673	671	901	634	599	421	361	219	4838
1980-81	29	65	101	344	551	697	752	599	585	446	321	164	4654
1981-82	64	33	121	450	580	710	887	657	642	551	335	124	5154
1982-83	67	20	137	392	719	791	716	553	511	470	287	189	4852
1983-84	78	15	171	393	544	879	753	596	502	504	359	207	5001
1984-85	33	19	145	440	628	851	948	674	678	383	311	128	5238
1985-86	5	43	197	405	817	983	662	562	444	489	321	93	5021
1986-87	74	3	213	319	548	773	784	589	539	370	245	105	4562
1987-88	60	17	94	262	537	774	790	600	561	395	327	136	4553
1988-89	29	31	108	244	533	749	705	811	544	278	271	87	4390
1989-90	31	21	65	336	522	733	674	654	498	340	296	106	4276
1990-91	16	10	39	394	532	952	803	449	632	479	376	220	4902
1991-92	17	25	59	325	515	729	643	502	448	326	165	66	3820
1992-93	7	14	91	319	566	782	912	732	472	406	191	143	4635
1993-94	76	36	108	274	787	792	695	648	516	353	208	124	4617
1994-95	14	6	56	360	657	683	620	475	523	433	232	151	4210
1995-96	9	39	49	411	437	686	711	644	540	378	371	168	4443
1996-97	31	39		402	583	693	739	630	557	445	191	177	
1997-98	23	1	84	434	525	801	639	544	550	456	358	150	4565
1998-99	7	22	79	394	523	782	706	602	637	462	391	211	4816
1999-	66	30	120	383	468	754							

WBAN : 24221

COOLING DEGREE DAYS (base 65°F) 1999 EUGENE, OR (EUG)

YEAR	JAN	FEB	MAR	APR	MAY	JUN	JUL	AUG	SEP	OCT	NOV	DEC	ANNUAL
1970	0	0	0	0	4	93	173	99	1	0	0	0	370
1971	0	0	0	0	0	3	119	129	2	0	0	0	253
1972	0	0	0	0	11	6	156	159	26	0	0	0	358
1973	0	0	0	0	2	38	119	50	26	0	0	0	235
1974	0	0	0	0	3	57	127	143	110	0	0	0	440
1975	0	0	0	0	3	25	135	47	82	1	0	0	293
1976	0	0	0	0	3	12	101	82	30	3	0	0	231
1977	0	0	0	0	0	10	52	177	12	0	0	0	251
1978	0	0	0	0	2	34	101	88	10	0	0	0	235
1979	0	0	0	0	0	16	111	40	15	0	0	0	182
1980	0	0	0	0	0	0	91	23	16	12	0	0	142
1981	0	0	0	1	0	4	63	138	38	0	0	0	244
1982	0	0	0	0	0	51	59	73	20	0	0	0	203
1983	0	0	0	0	17	3	23	56	0	0	0	0	99
1984	0	0	0	0	2	14	69	55	23	5	0	0	168
1985	0	0	0	0	4	28	166	73	2	0	0	0	273
1986	0	0	0	0	26	55	20	165	34	0	0	0	300
1987	0	0	0	0	32	59	48	104	30	4	0	0	277
1988	0	0	0	0	2	15	127	85	53	8	0	0	290
1989	0	0	0	1	14	38	47	81	60	0	0	0	241
1990	0	0	0	0	0	26	192	157	42	0	0	0	417
1991	0	0	0	0	0	2	101	117	71	1	0	0	292
1992	0	0	0	2	21	75	115	144	34	0	0	0	391
1993	0	0	0	0	0	12	9	95	46	5	0	0	167
1994	0	0	0	0	1	12	166	64	59	0	0	0	302
1995	0	0	0	0	7	41	135	61	47	0	0	0	291
1996	0	0	0	0	0	3	176	99	2	0	0	0	
1997	0	0	0	0	13	3	69	131	24	0	0	0	240
1998	0	0	0	0	1	0	142	117	50	0	0	0	310
1999	0	0	0	0	0	5	56	97	26	0	0	0	184

SNOWFALL (inches) 1999 EUGENE, OR (EUG)

YEAR	JUL	AUG	SEP	OCT	NOV	DEC	JAN	FEB	MAR	APR	MAY	JUN	TOTAL
1970-71	0.0	0.0	0.0	0.0	T	0.1	18.9	4.5	0.8	T	0.0	0.0	24.3
1971-72	0.0	0.0	T	T	0.0	1.2	1.2	T	0.5	T	0.0	0.0	2.9
1972-73	0.0	0.0	0.0	0.0	0.0	9.9	1.1	0.0	T	T	0.0	0.0	11.0
1973-74	0.0	0.0	0.0	0.0	1.5	T	T	0.4	T	0.0	T	0.0	1.9
1974-75	0.0	0.0	0.0	0.0	0.0	T	4.0	T	T	T	T	0.0	4.0
1975-76	0.0	0.0	0.0	0.0	T	2.8	T	T	1.3	T	0.0	0.0	4.1
1976-77	0.0	0.0	0.0	0.0	0.0	0.0	0.0	T	T	0.0	T	0.0	T
1977-78	0.0	0.0	0.0	0.0	0.2	0.0	T	T	0.0	T	0.0	0.0	0.2
1978-79	0.0	0.0	0.0	0.0	1.0	T	T	T	0.0	T	0.0	0.0	1.0
1979-80	0.0	0.0	0.0	0.0	0.0	T	T	0.0	T	0.0	0.0	0.0	T
1980-81	0.0	0.0	0.0	0.0	0.0	T	0.0	0.0	T	T	T	T	T
1981-82	0.0	0.0	0.0	0.0	T	T	5.0	2.1	T	T	0.0	0.0	7.1
1982-83	0.0	0.0	0.0	T	0.0	T	0.0	0.0	0.0	T	0.0	0.0	T
1983-84	0.0	0.0	0.0	0.0	T	3.7	T	T	T	T	T	0.0	3.7
1984-85	0.0	0.0	0.0	T	0.0	T	T	0.2	T	T	0.0	0.0	0.2
1985-86	0.0	0.0	0.0	0.0	2.3	4.7	0.0	2.8	0.0	T	T	0.0	9.8
1986-87	0.0	0.0	T	0.0	0.0	0.0	0.0	0.0	T	0.0	0.0	0.0	T
1987-88	0.0	0.0	0.0	0.0	0.0	6.0	0.7	1.0	0.0	T	0.0	0.0	7.7
1988-89	0.0	0.0	0.0	0.0	0.0	0.3	T	5.6	T	0.0	0.0	0.0	5.9
1989-90	0.0	0.0	0.0	0.0	T	0.0	T	8.8	0.0	0.0	0.0	0.0	8.8
1990-91	0.0	0.0	0.0	0.0	0.0	3.6	T	0.0	T	T	0.0	0.0	3.6
1991-92	0.0	0.0	0.0	0.0	0.0	0.0	0.0	0.0	0.0	T	0.0	0.0	T
1992-93	0.0	0.0	0.0	0.0	0.0	3.3	6.7	8.2	0.0	0.0	0.0	0.0	18.2
1993-94	0.0	0.0	0.0	0.0	T	0.0	0.0	T	0.3	0.0	0.0	0.0	0.3
1994-95	0.0	0.0	0.0	0.0	T	T	T	3.0	T	T	0.0	T	3.0
1995-96	0.0	0.0	0.0	0.0	0.0		T	6.0					
1996-97													
1997-98													
1998-99													
1999-													
POR= 53 YRS	0.0	0.0	T	T	0.2	1.2	3.4	1.0	0.5	T	T	T	6.3

WBAN : 24221

REFERENCE NOTES:

<p>PAGE 1: THE TEMPERATURE GRAPH SHOWS NORMAL MAXIMUM AND NORMAL MINIMUM DAILY TEMPERATURES (SOLID CURVES) AND THE ACTUAL DAILY HIGH AND LOW TEMPERATURES (VERTICAL BARS).</p> <p>PAGE 2 AND 3: H/C INDICATES HEATING AND COOLING DEGREE DAYS. RH INDICATES RELATIVE HUMIDITY W/O INDICATES WEATHER AND OBSTRUCTIONS S INDICATES SUNSHINE. PR INDICATES PRESSURE. CLOUDINESS ON PAGE 3 IS THE SUM OF THE CEILOMETER AND SATELLITE DATA NOT TO EXCEED EIGHT EIGHTHS(OKTAS).</p> <p>GENERAL: T INDICATES TRACE PRECIPITATION, AN AMOUNT GREATER THAN ZERO BUT LESS THAN THE LOWEST REPORTABLE VALUE. + INDICATES THE VALUE ALSO OCCURS ON EARLIER DATES. BLANK ENTRIES DENOTE MISSING OR UNREPORTED DATA. NORMALS ARE 30-YEAR AVERAGES (1961 - 1990). ASOS INDICATES AUTOMATED SURFACE OBSERVING SYSTEM. PM INDICATES THE LAST DAY OF THE PREVIOUS MONTH. POR (PERIOD OF RECORD) BEGINS WITH THE JANUARY DATA MONTH AND IS THE NUMBER OF YEARS USED TO COMPUTE THE MEAN. INDIVIDUAL MONTHS WITHIN THE POR MAY BE MISSING. WHEN THE POR FOR A NORMAL IS LESS THAN 30 YEARS, THE NORMAL IS PROVISIONAL AND IS BASED ON THE NUMBER OF YEARS INDICATED. 0.* OR * INDICATES THE VALUE OR MEAN-DAYS-WITH IS BETWEEN 0.00 AND 0.05. CLOUDINESS FOR ASOS STATIONS DIFFERS FROM THE NON-ASOS OBSERVATION TAKEN BY A HUMAN OBSERVER. ASOS STATION CLOUDINESS IS BASED ON TIME-AVERAGED CEILOMETER DATA FOR CLOUDS AT OR BELOW 12,000 FEET AND ON SATELLITE DATA FOR CLOUDS ABOVE 12,000 FEET. THE NUMBER OF DAYS WITH CLEAR, PARTLY CLOUDY, AND CLOUDY CONDITIONS FOR ASOS STATIONS IS THE SUM OF THE CEILOMETER AND SATELLITE DATA FOR THE SUNRISE TO SUNSET PERIOD.</p>	<p>GENERAL CONTINUED: CLEAR INDICATES 0 - 2 OKTAS, PARTLY CLOUDY INDICATES 3 - 6 OKTAS, AND CLOUDY INDICATES 7 OR 8 OKTAS. WHEN AT LEAST ONE OF THE ELEMENTS (CEILOMETER OR SATELLITE) IS MISSING, THE DAILY CLOUDINESS IS NOT COMPUTED. WIND DIRECTION IS RECORDED IN TENS OF DEGREES (2 DIGITS) CLOCKWISE FROM TRUE NORTH. "00" INDICATES CALM. "36" INDICATES TRUE NORTH. RESULTANT WIND IS THE VECTOR AVERAGE OF THE SPEED AND DIRECTION. AVERAGE TEMPERATURE IS THE SUM OF THE MEAN DAILY MAXIMUM AND MINIMUM TEMPERATURE DIVIDED BY 2. SNOWFALL DATA COMPRISE ALL FORMS OF FROZEN PRECIPITATION, INCLUDING HAIL. A HEATING (COOLING) DEGREE DAY IS THE DIFFERENCE BETWEEN THE AVERAGE DAILY TEMPERATURE AND 65° F. DRY BULB IS THE TEMPERATURE OF THE AMBIENT AIR. DEW POINT IS THE TEMPERATURE TO WHICH THE AIR MUST BE COOLED TO ACHIEVE 100 PERCENT RELATIVE HUMIDITY. WET BULB IS THE TEMPERATURE THE AIR WOULD HAVE IF THE MOISTURE CONTENT WAS INCREASED TO 100 PERCENT RELATIVE HUMIDITY.</p> <p>ON JULY 1, 1996, THE NATIONAL WEATHER SERVICE BEGAN USING THE "METAR" OBSERVATION CODE THAT WAS ALREADY EMPLOYED BY MOST OTHER NATIONS OF THE WORLD. THE MOST NOTICEABLE DIFFERENCE IN THIS ANNUAL PUBLICATION WILL BE THE CHANGE IN UNITS FROM TENTHS TO EIGHTHS(OKTAS) FOR REPORTING THE AMOUNT OF SKY COVER.</p>
---	---

1999
EUGENE,
OREGON (EUG)

Eugene is located at the upper or southern end of the fertile Willamette Valley. Mahlon Sweet Field, location of the National Weather Service Office, is 9 miles northwest of the city center. The Cascade Mountains to the east and the Coast Range to the west bound the valley, and low hills to the south nearly close it, but northward the level valley floor broadens rapidly. Hills of the rolling, wooded Coast Range begin about 5 miles west of the airport and rise to elevations of 1,500 to 2,500 feet midway between Eugene and the Pacific Ocean lying 50 miles to the west. About 10 miles east, the Coburg Hills, rising to an elevation of 2,500 feet, obscure the snow-covered peaks of the Cascade Range, which reach elevations of 10,000 feet about 75 miles away. Abundant moisture and moderate temperatures result in rapid growth of evergreen timber and lumbering is a major industry.

The Willamette River passes about 5 miles east of the airport. The Fern Ridge flood control reservoir, with a normal area of 9,360 acres, begins about 2 miles southwest. These two water areas are the main sources of local fog, but numerous small creeks and low places, which fill with water in the wet season, also produce considerable fog. The Coast Range acts as a barrier to coastal fog, but active storms cross these ridges with little hindrance. The Cascade Range blocks westward passage of all but the strongest continental air masses, but when air does flow into the valley from the east, dry, hot weather develops in summer causing an extreme fire hazard. In winter this situation causes clear, sunny days and cool, frosty nights.

The centers of low barometric pressure, with which rain is associated, generally pass inland north of Eugene and as a result southwest winds with speeds of 10 to 20 mph usually accompany rainfall. Heavier storms bring winds of 30 to 40 mph and occasional southwest winds exceeding 50 mph are experienced. Fair weather in both summer and winter is most often accompanied by calm nights and daytime northerly winds increasing to speeds of 5 to 15 mph in the afternoon.

The first fall rains usually arrive during the second or third week of September, after which rain gradually increases until about the first of January and then slowly decreases to the latter part of June. July and August are normally very dry, occasionally passing without rainfall. When snow occurs, it frequently melts on contact with the ground or within a few hours, but occasionally an accumulation of a few inches will persist as a ground covering for several days. Snowfall for a winter season exceeds 5 inches in about one-third of the years.

Temperatures are so largely controlled by maritime air from the Pacific that long periods of extremely hot or severely cold weather never occur. Temperatures of 95 degrees or higher have occurred only in the months of June, July, August, and September, and average three days a year.

Based on the 1951-1980 period, the average first occurrence of 32 degrees Fahrenheit in the fall is October 25 and the average last occurrence in the spring is April 24.

STATION LOCATION

EUGENE, OREGON

LOCATION	OCCUPIED FROM	OCCUPIED TO	AIRLINE DISTANCES AND DIRECTIONS FROM PREVIOUS LOCATION	LATITUDE NORTH	LONGITUDE WEST	ELEVATION ABOVE											* Type	REMARKS	
						SEA LEVEL	GROUND												AUTOMATED
							WIND	WIND	WIND	WIND	WIND	WIND	WIND	WIND	WIND	WIND			
<u>COOPERATIVE</u>																			
Near Villard Hall U of O Campus	10/1890	3/1912	NA	44°03'	123°05'	449												Several instrument sites in vicinity during period.	
533 East 10th Street	4/1912	8/13/15	0.5 mi. NW	44°03'	123°05'	449													
Kincaid Park	8/13/15	9/1917	1.5 mi. ESE	44°03'	123°03'	550													
744 Mill Race Drive (Mill and Alder)	10/1917	11/1919	1.5 mi. WSW	44°03'	123°05'	450													
477 Third Avenue East	12/1919	1/1/25	0.75 mi. NNW	44°03'	123°05'	450													
345 Mill Street	1/1/25	6/30/45	1 block SW	44°03'	123°05'	450													
<u>AIRPORT</u>																			
Administration Building Eugene Air Park	9/11/28	12/21/42	2 mi. SW	44°02'	123°07'	429	60	4	4									Instrumental equipment gradually installed in 1938.	
UAL Building Mahlon Sweet Field	12/21/42	7/15/53	7.8 mi. NW	44°07'	123°13'	364	34	4	4				4	4					
Administration Building Mahlon Sweet Field	7/15/53	09/01/95	0.5 mi. NNE	44°07'	123°13'	361	53	4	4	NA	NA	3	3	NA	NA			a - Moved to field 6/20/62. b - Minor move 12/6/62. c - Commissioned 2000' NW of thermometer site 7/31/63. d - Effective 7/31/63. e - Minor move 12/10/68. f - Raised 4/22/85. g - Minor adjustment and type change 8/28/85. h - Installed on roof 02/18/88. i - Moved to roof 02/18/88. j - Moved to roof 08/15/88.	
Mahlon Sweet Field	09/01/95	Present	NA	44°08'	123°13'	375											S	ASOS Commissioned 09/01/95	

SUBSCRIPTION: Price and ordering information available through: National Climatic Data Center, Federal Building, Asheville, North Carolina 28801. INQUIRIES/COMMENTS CALL: (828) 271-4800

National Climatic Data Center
151 Patton Avenue, Rm 120
Asheville NC 28801-5001

OFFICIAL BUSINESS
PENALTY FOR PRIVATE USE \$300
FORWARD AND ADDRESS CORRECTION

FIRST CLASS
POSTAGE & FEES PAID
United States Department of Commerce
NOAA Permit No. G - 19