

1999

LOCAL CLIMATOLOGICAL DATA ANNUAL SUMMARY WITH COMPARATIVE DATA



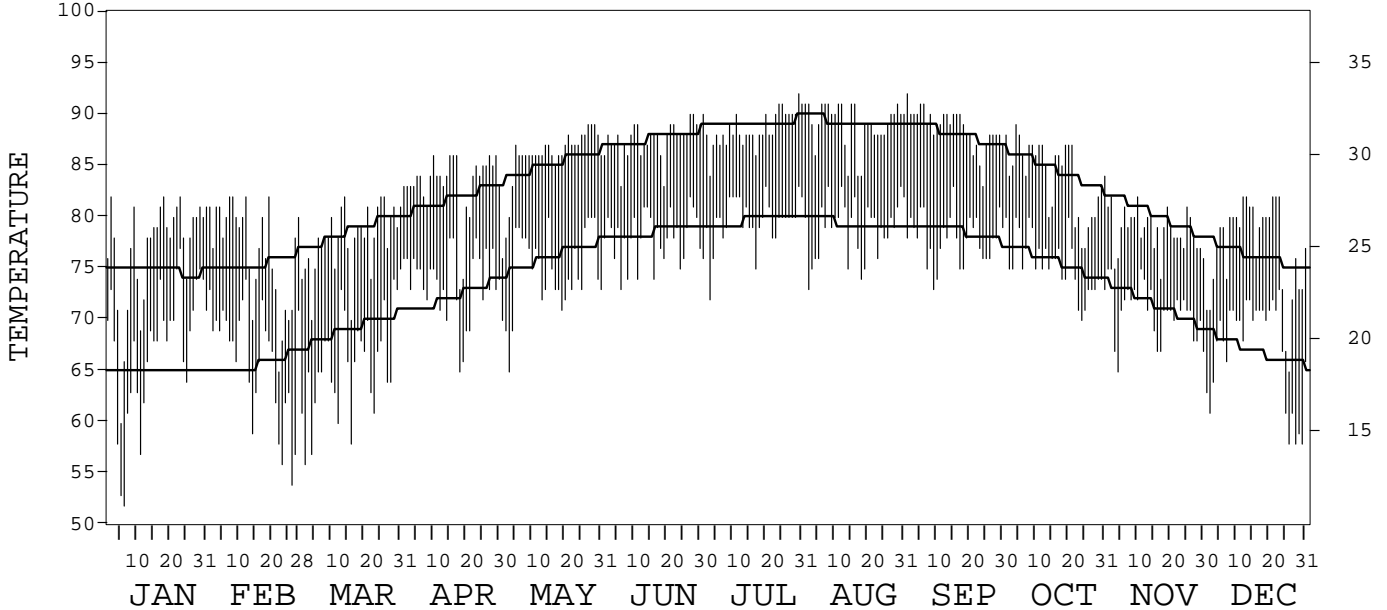
ISSN 0198-1250

KEY WEST,
FLORIDA (EYW)

Daily Data

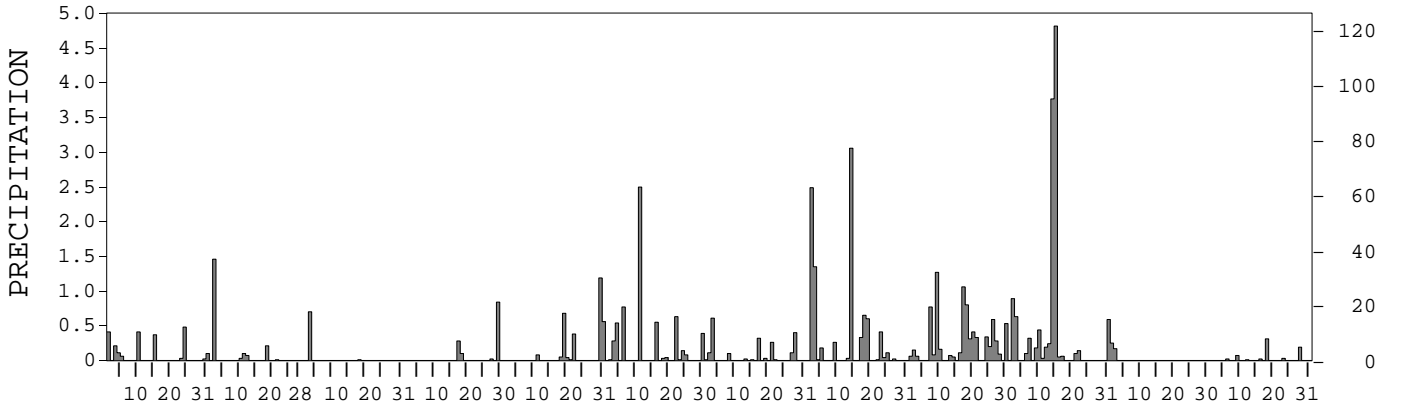
Fahrenheit

Celsius



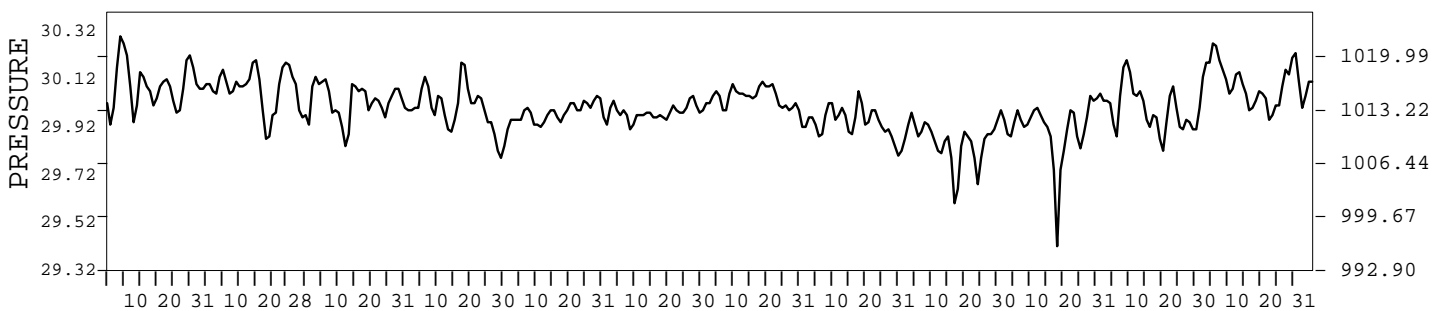
Inches

Millimeters



Inches of Mercury

Hectopascals



I CERTIFY THAT THIS IS AN OFFICIAL PUBLICATION OF THE NATIONAL OCEANIC AND ATMOSPHERIC ADMINISTRATION, AND IS COMPILED FROM RECORDS ON FILE AT THE NATIONAL CLIMATIC DATA CENTER.

NATIONAL OCEANIC AND ATMOSPHERIC ADMINISTRATION
 NATIONAL ENVIRONMENTAL AND INFORMATION SERVICE
 NATIONAL ENVIRONMENTAL AND INFORMATION SERVICE
 NATIONAL CLIMATIC DATA CENTER
 NATIONAL CLIMATIC DATA CENTER
 DIRECTOR NATIONAL CLIMATIC DATA CENTER
 ASHEVILLE, NORTH CAROLINA

METEOROLOGICAL DATA FOR 1999

KEY WEST, FL (EYW)

LATITUDE: 24° 33' 12" N LONGITUDE: 81° 45' 13" W ELEVATION (FT): GRND: 19 BARO: 19 TIME ZONE: EASTERN (UTC + 5) WBAN: 12836

	ELEMENT	JAN	FEB	MAR	APR	MAY	JUN	JUL	AUG	SEP	OCT	NOV	DEC	YEAR	
TEMPERATURE ° F	MEAN DAILY MAXIMUM	77.0	76.7	77.9	83.2	85.9	87.6	88.6	89.1	88.7	84.0	78.7	77.0	82.9	
	HIGHEST DAILY MAXIMUM	82	82	82	86	89	90	92	91	92	89	82	82	92	
	DATE OF OCCURRENCE	23+	19+	26+	29+	29+	28+	30	29+	01	04	10+	23+	SEP 01	
	MEAN DAILY MINIMUM	67.3	66.1	65.9	73.6	74.8	78.0	79.5	78.9	78.0	75.5	70.8	67.2	73.0	
	LOWEST DAILY MINIMUM	52	54	56	65	65	73	72	73	73	70	65	58	52	
	DATE OF OCCURRENCE	06	26	02	18	03	06	03	02	09	24	04	30+	JAN 06	
	AVERAGE DRY BULB	72.2	71.4	71.9	78.4	80.4	82.8	84.1	84.0	83.4	79.8	74.8	72.1	77.9	
	MEAN WET BULB	67.4	66.3	66.8	73.4	75.0	77.6	78.1	78.1	77.8	74.7	69.4	67.2	72.7	
	MEAN DEW POINT	64.5	62.6	63.6	70.9	72.5	75.4	75.6	75.5	75.3	72.2	66.5	64.6	69.9	
	NUMBER OF DAYS WITH:														
	MAXIMUM ≥ 90°	0	0	0	0	0	2	12	16	12	0	0	0	0	42
	MAXIMUM ≤ 32°	0	0	0	0	0	0	0	0	0	0	0	0	0	0
	MINIMUM ≤ 32°	0	0	0	0	0	0	0	0	0	0	0	0	0	0
MINIMUM ≤ 0°	0	0	0	0	0	0	0	0	0	0	0	0	0	0	
H/C	HEATING DEGREE DAYS	16	8	2	0	0	0	0	0	0	0	0	4	30	
	COOLING DEGREE DAYS	244	195	223	410	484	541	599	595	556	466	300	232	4845	
RH	MEAN (PERCENT)	78	74	75	79	77	79	77	75	77	78	77	79	77	
	HOUR 01 LST	83	78	82	84	82	82	82	80	81	82	81	84	82	
	HOUR 07 LST	83	80	83	84	81	81	79	80	81	83	82	85	82	
	HOUR 13 LST	72	67	66	72	70	74	72	70	70	74	70	70	71	
	HOUR 19 LST	79	74	73	78	75	79	76	74	76	77	76	81	76	
S	PERCENT POSSIBLE SUNSHINE														
W/O	NUMBER OF DAYS WITH:														
	HEAVY FOG (VISBY ≤ 1/4 MI)	0	1	0	1	0	1	0	1	1	0	0	0	5	
	THUNDERSTORMS	4	1	1	2	9	16	12	11	15	9	1	0	81	
CLOUDINESS	SUNRISE-SUNSET: (OKTAS)														
	CEILOMETER (≤ 12,000 FT.)														
	SATELLITE (> 12,000 FT.)														
	MIDNIGHT-MIDNIGHT: (OKTAS)														
	CEILOMETER (≤ 12,000 FT.)														
	SATELLITE (> 12,000 FT.)														
NUMBER OF DAYS WITH:															
CLEAR															
PARTLY CLOUDY															
CLOUDY															
PR	MEAN STATION PRESS. (IN.)	30.09	30.08	30.03	30.00	29.97	29.98	30.04	29.94	29.86	29.93	30.01	30.09	30.00	
	MEAN SEA-LEVEL PRESS. (IN.)	30.11	30.10	30.05	30.02	29.99	30.00	30.06	29.96	29.88	29.95	30.03	30.11	30.02	
WINDS	RESULTANT SPEED (MPH)	3.6	2.8	2.5		3.0	3.2	2.9	1.0	1.5	5.7	9.3	3.7		
	RES. DIR. (TENS OF DEGS.)	09	01	08		13	11	08	06	14	36	02	04		
	MEAN SPEED (MPH)	12.0	9.9	10.3	10.1	8.1	7.9	8.9	7.4	9.6	11.3	12.5	9.6	9.8	
	PREVAIL. DIR. (TENS OF DEGS.)	12	36	11	11	13	11	11	15	13	08	04	04	11	
	MAXIMUM 2-MINUTE WIND:														
	SPEED (MPH)	28	26	33	41	26	30	31	31	41	44	26	24	44	
	DIR. (TENS OF DEGS.)	15	36	33	16	04	18	13	22	17	10	03	01	10	
	DATE OF OCCURRENCE	24+	21	03	27	22	16+	17	05	18	15	30	01	OCT 15	
	MAXIMUM 5-SECOND WIND:														
	SPEED (MPH)	33	36	41	47	40	41	38	39	52	54	33	30	54	
DIR. (TENS OF DEGS.)	01	02	33	15	04	06	13	22	16	06	04	36	06		
DATE OF OCCURRENCE	05+	21	03	27	22	11	17	05	18	15	30+	25+	OCT 15		
PRECIPITATION	WATER EQUIVALENT:														
	TOTAL (IN.)	2.20	1.88	0.71	1.24	2.99	5.97	1.99	9.55	7.72	12.55	0.42	0.65	47.87	
	GREATEST 24-HOUR (IN.)	0.51	1.46	0.70	0.84	1.38	2.50	0.72	3.51	1.27	7.97	0.42	0.31	7.97	
	DATE OF OCCURRENCE	23-24	02	03	29	30-31	11	02-03	02-03	09	14-15	01-02	18	OCT 14-15	
	NUMBER OF DAYS WITH:														
	PRECIPITATION ≥ 0.01	10	6	2	4	8	13	12	15	21	16	2	7	116	
PRECIPITATION ≥ 0.10	7	3	1	3	4	8	7	10	15	13	2	2	75		
PRECIPITATION ≥ 1.00	0	1	0	0	1	1	0	3	2	2	0	0	10		
SNOWFALL	SNOW, ICE PELLETS, HAIL:														
	TOTAL (IN.)														
	GREATEST 24-HOUR (IN.)														
	DATE OF OCCURRENCE														
	MAXIMUM SNOW DEPTH (IN.)														
	DATE OF OCCURRENCE														
NUMBER OF DAYS WITH:															
SNOWFALL ≥ 1.0															

NORMALS, MEANS, AND EXTREMES

KEY WEST, FL (EYW)

LATITUDE: 24° 33' 12" N LONGITUDE: 81° 45' 13" W ELEVATION (FT): GRND: 19 BARO: 19 TIME ZONE: EASTERN (UTC + 5) WBAN: 12836

	ELEMENT	POR	JAN	FEB	MAR	APR	MAY	JUN	JUL	AUG	SEP	OCT	NOV	DEC	YEAR
TEMPERATURE °F	NORMAL DAILY MAXIMUM	30	74.8	75.4	78.6	81.7	85.1	87.6	89.1	89.2	88.0	84.4	80.0	76.1	82.5
	MEAN DAILY MAXIMUM	48	74.9	75.8	78.7	81.8	85.2	87.9	89.4	89.6	88.2	84.6	80.1	76.2	82.7
	HIGHEST DAILY MAXIMUM	47	86	85	88	90	91	94	95	95	94	93	89	86	95
	YEAR OF OCCURRENCE		1991	1991	1994	1991	1995	1952	1951	1957	1951	1962	1988	1994	AUG 1957
	MEAN OF EXTREME MAXS.	48	81.8	82.2	84.3	86.4	88.8	90.9	91.9	92.1	89.2	88.9	85.4	82.5	87.0
	NORMAL DAILY MINIMUM	30	65.0	65.6	69.0	72.2	76.1	78.5	79.6	79.3	78.5	75.5	71.2	66.8	73.1
	MEAN DAILY MINIMUM	48	65.0	65.7	68.7	72.1	75.7	78.3	79.5	79.2	76.6	75.5	71.3	66.7	72.9
	LOWEST DAILY MINIMUM	47	41	45	47	48	64	68	69	68	0	60	49	44	0
	YEAR OF OCCURRENCE		1981	1996	1986	1987	1992	1961	1952	1998	1957	1959	1989	1989	SEP 1998
	MEAN OF EXTREME MINS.	48	53.1	54.5	58.5	64.0	70.0	72.6	73.8	73.1	71.4	69.5	62.0	55.3	64.8
	NORMAL DRY BULB	30	69.9	70.5	73.8	77.0	80.6	83.1	84.4	84.3	83.3	80.0	75.6	71.5	77.8
	MEAN DRY BULB	48	70.0	70.7	73.8	77.0	80.5	83.1	84.4	84.4	83.3	80.1	75.7	71.5	77.9
	MEAN WET BULB	16	65.5	66.0	67.3	70.0	73.8	77.0	77.5	77.8	77.2	74.3	66.8	62.8	71.3
	MEAN DEW POINT	16	62.3	62.6	63.7	66.2	70.5	74.2	74.6	75.0	74.6	71.6	64.2	59.9	68.3
	NORMAL NO. DAYS WITH:														
MAXIMUM ≥ 90°	30	0.0	0.0	0.0	0.0	0.6	5.6	12.8	14.4	6.2	0.4	0.0	0.0	40.0	
MAXIMUM ≤ 32°	30	0.0	0.0	0.0	0.0	0.0	0.0	0.0	0.0	0.0	0.0	0.0	0.0	0.0	
MINIMUM ≤ 32°	30	0.0	0.0	0.0	0.0	0.0	0.0	0.0	0.0	0.0	0.0	0.0	0.0	0.0	
MINIMUM ≤ 0°	30	0.0	0.0	0.0	0.0	0.0	0.0	0.0	0.0	0.0	0.0	0.0	0.0	0.0	
H/C	NORMAL HEATING DEG. DAYS	30	44	30	7	0	0	0	0	0	0	0	0	19	100
	NORMAL COOLING DEG. DAYS	30	196	184	279	360	484	543	601	598	549	465	318	221	4798
RH	NORMAL (PERCENT)	30	76	74	73	70	72	74	72	73	75	75	76	76	74
	HOUR 01 LST	30	80	78	77	75	76	78	76	78	79	79	80	80	78
	HOUR 07 LST	30	81	80	78	76	76	78	76	78	81	81	82	82	79
	HOUR 13 LST	30	69	67	66	63	65	69	66	68	70	69	69	69	68
	HOUR 19 LST	30	76	74	73	69	71	73	71	72	75	75	76	76	73
S	PERCENT POSSIBLE SUNSHINE	37	74	77	82	84	82	76	77	76	72	71	71	71	76
W/O	MEAN NO. DAYS WITH:														
	HEAVY FOG (VISBY ≤ 1/4 MI)	52	0.4	0.3	0.0	0.0	0.0	0.0	0.0	0.0	0.0	0.1	0.1	0.3	1.2
	THUNDERSTORMS	52	1.2	1.2	1.8	1.8	4.3	9.7	12.7	14.1	11.3	4.4	1.1	1.0	64.6
CLOUDINESS	MEAN:														
	SUNRISE-SUNSET (OKTAS)	44	4.1	3.8	3.7	3.6	4.1	5.0	5.0	5.0	5.2	4.4	4.0	4.0	4.3
	MIDNIGHT-MIDNIGHT (OKTAS)	32	3.7	3.6	3.3	3.2	3.8	4.6	4.7	4.7	5.0	4.0	3.6	3.6	4.0
	MEAN NO. DAYS WITH:														
	CLEAR	44	11.2	12.0	13.1	13.2	10.0	5.0	3.4	3.3	2.7	8.7	10.5	10.9	104.0
PARTLY CLOUDY	44	11.1	9.8	11.5	11.2	13.3	14.0	16.2	16.6	15.2	12.9	11.1	11.3	154.2	
CLOUDY	44	8.7	6.5	6.5	5.6	7.7	11.0	11.4	11.1	12.1	9.4	8.4	8.8	107.2	
PR	MEAN STATION PRESSURE (IN)	27	30.10	30.09	30.00	30.00	30.00	30.00	30.00	30.00	29.90	30.00	30.01	30.10	30.02
	MEAN SEA-LEVEL PRES. (IN)	16	30.10	30.09	30.05	30.01	30.00	30.01	30.05	30.01	29.97	30.00	30.03	30.10	30.03
WINDS	MEAN SPEED (MPH)	28	11.9	11.8	12.0	11.8	10.3	9.5	9.4	8.8	9.6	11.2	12.0	11.6	10.8
	PREVAIL. DIR (TENS OF DEGS)	20	05	36	12	11	12	12	12	12	12	06	05	05	12
	MAXIMUM 2-MINUTE:														
	SPEED (MPH)	3	28	57	33	41	34	30	31	31	41	44	46	30	57
	DIR. (TENS OF DEGS)		15	12	33	16	02	18	13	22	17	10	18	32	12
	YEAR OF OCCURRENCE		1999	1998	1999	1999	1998	1999	1999	1999	1999	1999	1998	1997	FEB 1998
	MAXIMUM 5-SECOND:														
SPEED (MPH)	3	36	68	41	47	41	41	39	59	52	54	55	38	68	
DIR. (TENS OF DEGS)		05	12	33	15	02	06	12	12	16	06	18	32	12	
YEAR OF OCCURRENCE		1997	1998	1999	1999	1998	1999	1998	1997	1999	1999	1998	1997	FEB 1998	
PRECIPITATION	NORMAL (IN)	30	2.01	1.80	1.71	1.75	3.46	5.09	3.61	5.03	5.85	4.42	2.84	2.02	39.59
	MAXIMUM MONTHLY (IN)	51	17.64	4.87	9.69	12.83	12.90	14.43	11.69	11.34	18.45	21.57	27.67	11.18	27.67
	YEAR OF OCCURRENCE		1983	1998	1987	1948	1960	1972	1970	1945	1963	1969	1980	1986	NOV 1980
	MINIMUM MONTHLY (IN)	51	T	0.02	T	0.00	0.12	0.33	0.44	2.23	1.70	0.74	T	0.07	0.00
	YEAR OF OCCURRENCE		1990	1948	1971	1959	1945	1994	1993	1991	1951	1972	1995	1981	APR 1959
	MAXIMUM IN 24 HOURS (IN)	51	10.32	2.85	5.31	6.55	8.89	6.17	3.05	3.90	6.65	8.47	23.28	6.99	23.28
	YEAR OF OCCURRENCE		1983	1998	1987	1985	1960	1982	1970	1977	1963	1971	1980	1986	NOV 1980
	NORMAL NO. DAYS WITH:														
PRECIPITATION ≥ 0.01	30	6.0	6.0	5.1	4.2	8.1	11.6	11.7	14.3	15.5	10.5	6.6	6.4	106.0	
PRECIPITATION ≥ 1.00	30	0.4	0.5	0.4	0.5	1.1	1.6	0.8	1.5	1.4	1.1	0.6	0.5	10.4	
SNOWFALL	NORMAL (IN)	30	0.0	0.0	0.0	0.0	0.0	0.0	0.0	0.0	0.0	0.0	0.0	0.0	0.0
	MAXIMUM MONTHLY (IN)	0	0.0	0.0	0.0	0.0	0.0	0.0	0.0	0.0	0.0	0.0	0.0	0.0	0.0
	YEAR OF OCCURRENCE														
	MAXIMUM IN 24 HOURS (IN)	48	0.0	0.0	0.0	0.0	0.0	0.0	0.0	0.0	0.0	0.0	0.0	0.0	0.0
	YEAR OF OCCURRENCE														
	MAXIMUM SNOW DEPTH (IN)	44	0	0	0	0	0	0	0	0	0	0	0	0	0
YEAR OF OCCURRENCE															
NORMAL NO. DAYS WITH:															
SNOWFALL ≥ 1.0	30	0.0	0.0	0.0	0.0	0.0	0.0	0.0	0.0	0.0	0.0	0.0	0.0	0.0	

PRECIPITATION (inches) 1999 KEY WEST, FL (EYW)

YEAR	JAN	FEB	MAR	APR	MAY	JUN	JUL	AUG	SEP	OCT	NOV	DEC	ANNUAL
1970	8.21	2.10	2.20	0.11	2.63	1.96	11.69	4.03	5.35	8.03	0.15	0.36	46.82
1971	0.41	2.76	T	0.24	4.37	2.77	4.80	9.03	5.47	11.12	1.69	1.59	44.25
1972	2.75	2.08	0.59	0.76	2.64	14.43	4.86	3.53	8.70	0.74	2.04	3.16	46.28
1973	2.48	2.43	2.20	0.16	0.82	2.87	4.08	8.55	3.30	2.43	0.18	3.24	32.74
1974	0.57	0.41	0.30	0.21	3.45	2.99	2.38	4.13	3.05	0.95	1.22	0.33	19.99
1975	0.17	1.61	0.59	0.85	1.36	5.22	4.16	4.20	7.11	3.69	0.91	1.90	31.77
1976	0.97	2.18	0.05	4.79	2.65	10.23	0.81	7.10	3.38	3.22	0.50	1.91	37.79
1977	1.35	1.50	0.07	2.95	10.10	1.97	1.91	10.43	3.71	2.38	4.23	4.43	45.03
1978	2.13	1.81	2.43	1.97	9.45	5.06	1.40	2.69	3.03	4.19	1.83	0.43	36.42
1979	1.65	0.95	1.03	4.56	2.20	3.00	3.50	2.51	2.84	3.11	1.61	1.21	28.17
1980	0.98	0.92	0.83	2.84	2.14	2.58	6.65	6.38	6.01	2.95	27.67	0.47	60.42
1981	0.46	2.27	0.84	0.39	0.55	0.90	1.15	8.88	6.68	1.39	3.50	0.07	27.08
1982	0.38	1.68	3.44	1.74	5.78	8.95	1.94	2.61	6.36	2.27	1.20	0.30	36.65
1983	17.64	3.48	6.57	1.88	2.24	3.82	4.64	2.79	2.25	1.20	0.91	4.97	52.39
1984	0.10	4.07	2.18	4.16	5.79	7.09	3.29	2.59	8.11	1.32	1.15	0.10	39.95
1985	0.32	0.29	2.15	10.60	4.39	0.57	3.64	5.92	6.42	3.04	2.62	2.28	42.24
1986	1.26	2.02	0.99	0.93	0.91	5.37	4.48	5.66	4.58	2.52	0.92	11.18	40.82
1987	0.89	0.57	9.69	0.20	2.39	4.35	3.07	3.87	6.88	8.39	5.84	2.76	48.90
1988	4.78	0.46	1.68	0.64	8.12	3.60	5.78	6.29	3.48	0.76	0.78	0.19	36.56
1989	0.44	0.33	1.05	1.37	2.91	1.80	5.90	3.30	3.15	2.70	6.54	1.67	31.16
1990	T	1.05	0.75	1.37	5.54	0.94	4.09	8.01	5.29	5.14	2.93	1.32	36.43
1991	2.24	0.27	2.90	1.45	8.07	8.42	2.21	2.23	5.39	7.12	0.13	0.72	41.15
1992	0.28	1.22	2.81	1.42	1.60	11.77	1.07	3.82	7.15	2.04	3.83	0.08	37.09
1993	7.95	0.33	1.43	1.78	4.41	1.71	0.44	3.81	5.75	6.01	0.22	2.22	36.06
1994	2.32	2.28	0.34	2.44	3.13	0.33	1.91	8.97	13.00	6.29	1.30	4.52	46.83
1995	4.23	0.11	1.85	2.16	0.66	7.89	2.87	2.87	4.42	8.73	T	2.93	38.72
1996	0.88	0.24	1.85	2.81	2.60	3.21	3.18	6.48	6.55	11.87	0.12	1.44	41.23
1997	3.75	0.63	1.87	2.62	1.00	4.84	6.90	3.63	6.50	1.15	2.15	4.41	39.45
1998	2.42	4.87	3.13	1.01	0.86	0.86	1.12	3.37		4.78	2.29	1.60	
1999	2.20	1.88	0.71	1.24	2.99	5.97	1.99	9.55	7.72	12.55	0.42	0.65	47.87
POR= 129 YRS	1.89	1.64	1.54	1.72	2.72	4.42	3.50	4.63	6.36	5.48	2.36	1.81	38.07

WBAN : 12836

AVERAGE TEMPERATURE (°F) 1999 KEY WEST, FL (EYW)

YEAR	JAN	FEB	MAR	APR	MAY	JUN	JUL	AUG	SEP	OCT	NOV	DEC	ANNUAL
1970	66.9	67.0	72.9	78.9	78.9	82.7	83.8	83.3	81.6	79.3	71.9	72.4	76.6
1971	70.6	71.9	72.4	75.9	80.7	83.0	84.1	83.2	82.7	81.1	75.8	76.2	78.1
1972	75.0	71.9	75.4	77.9	80.9	81.3	83.6	84.4	82.9	81.3	78.0	73.6	78.9
1973	72.3	66.8	75.8	76.8	80.2	82.9	83.5	83.1	83.0	80.3	78.2	70.4	77.8
1974	76.8	71.0	75.8	77.6	80.4	82.9	83.6	84.2	84.4	79.1	75.3	72.1	78.6
1975	74.6	75.4	76.5	79.6	82.4	84.2	83.7	84.5	82.8	81.2	75.4	71.4	79.3
1976	67.9	70.7	77.1	76.3	80.5	80.7	84.5	84.0	83.5	79.4	74.4	70.9	77.5
1977	65.9	68.0	76.4	77.1	79.1	83.2	83.8	83.0	83.3	78.3	74.6	69.4	76.8
1978	64.2	63.1	70.8	77.4	81.8	84.0	85.3	85.3	84.2	80.5	77.9	76.1	77.6
1979	69.2	69.2	72.8	78.7	81.5	84.3	85.3	85.2	83.7	80.9	76.8	72.4	78.3
1980	70.9	66.5	75.2	77.7	81.3	83.8	84.7	85.0	84.4	81.6	75.7	68.5	77.9
1981	61.3	69.1	71.0	78.5	81.0	85.1	85.8	84.0	83.0	81.5	73.9	70.5	77.1
1982	71.3	75.9	77.1	80.8	80.1	83.1	85.5	83.9	82.3	78.9	75.4	73.4	79.0
1983	67.6	68.3	69.7	74.0	78.8	82.1	83.4	83.9	82.7	80.5	75.7	72.7	76.6
1984	68.6	70.8	72.7	76.4	80.8	81.2	82.9	83.5	81.5	80.1	74.7	74.1	77.3
1985	67.0	71.8	75.3	76.3	81.4	85.1	83.3	84.0	82.2	82.1	78.2	69.0	78.0
1986	67.8	72.0	71.5	74.3	80.1	83.5	85.2	83.7	83.5	81.5	80.6	75.0	78.2
1987	68.9	71.8	73.0	71.2	80.2	84.5	85.1	85.3	84.9	77.1	75.9	71.5	77.5
1988	69.1	68.4	71.9	76.6	77.9	82.5	84.2	84.2	83.6	79.8	78.5	71.4	77.3
1989	74.1	72.1	74.3	78.2	81.7	83.9	83.9	85.4	85.1	80.4	77.0	67.3	78.6
1990	73.2	75.5	75.0	76.6	81.7	84.4	84.7	85.6	83.8	80.9	75.6	74.6	79.3
1991	75.5	72.9	75.7	80.5	82.2	83.8	85.7	85.5	83.8	80.2	74.4	72.9	79.4
1992	69.6	72.5	73.4	75.6	77.8	83.5	85.0	85.1	83.1	79.6	77.9	72.8	78.0
1993	74.5	70.7	71.9	74.3	79.2	83.8	85.9	85.3	83.9	81.2	77.1	70.9	78.2
1994	70.3	74.6	74.6	79.2	81.6	85.3	84.4	83.5	82.6	80.5	78.0	73.8	79.0
1995	69.1	69.4	73.9	78.4	83.5	83.2	84.8	85.3	84.2	81.8	75.4	69.2	78.2
1996	68.6	67.4	69.9	75.8	80.7	82.6	84.8	83.7	83.5	79.0	75.6	72.5	77.0
1997	70.9	75.1	77.5	77.5	82.0	83.2	84.0	84.4	81.9	79.0	75.6	70.6	78.5
1998	70.7	70.7	70.6	76.5	79.8	85.1	85.8	84.6		81.1	77.3	75.0	
1999	72.2	71.4	71.9	78.4	80.4	82.8	84.1	84.0	83.4	79.8	74.8	72.1	77.9
POR= 127 YRS	70.0	70.9	73.4	76.6	79.8	82.5	83.9	84.0	82.1	79.4	74.8	71.0	77.4

HEATING DEGREE DAYS (base 65°F) 1999 KEY WEST, FL (EYW)

YEAR	JUL	AUG	SEP	OCT	NOV	DEC	JAN	FEB	MAR	APR	MAY	JUN	TOTAL
1970-71	0	0	0	0	11	1	25	20	4	0	0	0	61
1971-72	0	0	0	0	0	0	0	8	0	0	0	0	8
1972-73	0	0	0	0	0	8	16	37	0	0	0	0	61
1973-74	0	0	0	0	0	24	0	17	0	0	0	0	41
1974-75	0	0	0	0	0	4	3	0	0	0	0	0	7
1975-76	0	0	0	0	2	13	38	4	0	0	0	0	57
1976-77	0	0	0	0	0	10	65	20	0	0	0	0	95
1977-78	0	0	0	0	0	36	92	85	10	0	0	0	223
1978-79	0	0	0	0	0	0	17	22	0	0	0	0	39
1979-80	0	0	0	0	0	0	12	45	16	0	0	0	73
1980-81	0	0	0	0	0	26	128	18	1	0	0	0	173
1981-82	0	0	0	0	0	25	24	0	0	0	0	0	49
1982-83	0	0	0	0	0	10	24	8	2	0	0	0	44
1983-84	0	0	0	0	0	36	25	8	12	0	0	0	81
1984-85	0	0	0	0	0	2	39	16	0	0	0	0	57
1985-86	0	0	0	0	0	33	31	9	33	0	0	0	106
1986-87	0	0	0	0	0	0	24	7	2	10	0	0	43
1987-88	0	0	0	0	0	5	22	20	17	0	0	0	64
1988-89	0	0	0	0	0	10	0	27	3	0	0	0	40
1989-90	0	0	0	0	0	61	2	0	0	0	0	0	63
1990-91	0	0	0	0	0	3	0	8	2	0	0	0	13
1991-92	0	0	0	0	0	0	12	2	0	0	0	0	14
1992-93	0	0	0	0	0	3	0	5	12	0	0	0	20
1993-94	0	0	0	0	0	9	9	5	0	0	0	0	23
1994-95	0	0	0	0	0	0	15	24	0	0	0	0	39
1995-96	0	0	0	0	0	37	37	61	29	0	0	0	164
1996-97	0	0	0	0	0	12	27	2	0	0	0	0	41
1997-98	0	0	0	0	0	15	12	7	19	0	0	0	53
1998-99	0	0	0	0	0	0	16	8	2	0	0	0	
1999-	0	0	0	0	0	4							

WBAN : 12836

COOLING DEGREE DAYS (base 65°F) 1999 KEY WEST, FL (EYW)

YEAR	JAN	FEB	MAR	APR	MAY	JUN	JUL	AUG	SEP	OCT	NOV	DEC	ANNUAL
1970	113	85	254	424	435	538	589	576	506	452	222	239	4433
1971	204	220	241	334	492	544	599	570	536	505	334	355	4934
1972	314	216	331	396	501	496	583	610	544	511	398	284	5184
1973	249	93	339	364	479	545	582	571	549	483	400	201	4855
1974	371	194	343	387	484	544	585	601	587	445	317	230	5088
1975	309	296	361	444	545	584	588	610	538	508	322	217	5322
1976	133	175	382	343	487	476	611	598	565	453	289	198	4710
1977	101	112	360	371	446	551	589	567	556	419	295	177	4544
1978	75	40	195	375	528	580	638	640	583	485	394	353	4886
1979	154	147	250	417	516	588	637	632	566	502	362	235	5006
1980	200	96	340	387	514	575	620	625	589	524	328	140	4938
1981	21	141	195	411	505	613	651	598	548	521	274	201	4679
1982	224	309	384	484	473	549	641	593	525	437	320	277	5216
1983	110	106	156	278	436	519	576	595	537	487	329	282	4411
1984	147	182	258	350	498	492	558	582	502	474	298	291	4632
1985	110	213	326	349	516	610	576	596	521	534	403	163	4917
1986	123	209	239	286	477	563	634	585	560	521	475	315	4987
1987	151	203	258	202	477	594	629	637	603	380	335	211	4680
1988	155	125	239	356	408	531	604	602	562	465	411	216	4674
1989	289	235	298	401	524	572	593	640	611	482	369	138	5152
1990	263	299	315	356	522	588	620	644	575	499	326	309	5316
1991	334	234	344	472	540	573	650	643	569	482	287	253	5381
1992	164	223	266	323	405	561	625	627	548	462	395	252	4851
1993	298	169	231	282	445	569	656	638	574	508	370	197	4937
1994	181	279	302	431	520	612	607	579	534	489	397	277	5208
1995	147	152	283	409	583	551	618	638	580	526	318	170	4975
1996	158	137	188	333	490	533	621	586	562	439	323	249	4619
1997	217	293	391	385	534	556	597	607	515	441	325	195	5056
1998	195	175	201	351	466	611	652	616	508	376	318	318	4845
1999	244	195	223	410	484	541	599	595	556	466	300	232	4845

SNOWFALL (inches) 1999 KEY WEST, FL (EYW)

YEAR	JUL	AUG	SEP	OCT	NOV	DEC	JAN	FEB	MAR	APR	MAY	JUN	TOTAL
1970-71	0.0	0.0	0.0	0.0	0.0	0.0	0.0	0.0	0.0	0.0	0.0	0.0	0.0
1971-72	0.0	0.0	0.0	0.0	0.0	0.0	0.0	0.0	0.0	0.0	0.0	0.0	0.0
1972-73	0.0	0.0	0.0	0.0	0.0	0.0	0.0	0.0	0.0	0.0	0.0	0.0	0.0
1973-74	0.0	0.0	0.0	0.0	0.0	0.0	0.0	0.0	0.0	0.0	0.0	0.0	0.0
1974-75	0.0	0.0	0.0	0.0	0.0	0.0	0.0	0.0	0.0	0.0	0.0	0.0	0.0
1975-76	0.0	0.0	0.0	0.0	0.0	0.0	0.0	0.0	0.0	0.0	0.0	0.0	0.0
1976-77	0.0	0.0	0.0	0.0	0.0	0.0	0.0	0.0	0.0	0.0	0.0	0.0	0.0
1977-78	0.0	0.0	0.0	0.0	0.0	0.0	0.0	0.0	0.0	0.0	0.0	0.0	0.0
1978-79	0.0	0.0	0.0	0.0	0.0	0.0	0.0	0.0	0.0	0.0	0.0	0.0	0.0
1979-80	0.0	0.0	0.0	0.0	0.0	0.0	0.0	0.0	0.0	0.0	0.0	0.0	0.0
1980-81	0.0	0.0	0.0	0.0	0.0	0.0	0.0	0.0	0.0	0.0	0.0	0.0	0.0
1981-82	0.0	0.0	0.0	0.0	0.0	0.0	0.0	0.0	0.0	0.0	0.0	0.0	0.0
1982-83	0.0	0.0	0.0	0.0	0.0	0.0	0.0	0.0	0.0	0.0	0.0	0.0	0.0
1983-84	0.0	0.0	0.0	0.0	0.0	0.0	0.0	0.0	0.0	0.0	0.0	0.0	0.0
1984-85	0.0	0.0	0.0	0.0	0.0	0.0	0.0	0.0	0.0	0.0	0.0	0.0	0.0
1985-86	0.0	0.0	0.0	0.0	0.0	0.0	0.0	0.0	0.0	0.0	0.0	0.0	0.0
1986-87	0.0	0.0	0.0	0.0	0.0	0.0	0.0	0.0	0.0	0.0	0.0	0.0	0.0
1987-88	0.0	0.0	0.0	0.0	0.0	0.0	0.0	0.0	0.0	0.0	0.0	0.0	0.0
1988-89	0.0	0.0	0.0	0.0	0.0	0.0	0.0	0.0	0.0	0.0	0.0	0.0	0.0
1989-90	0.0	0.0	0.0	0.0	0.0	0.0	0.0	0.0	0.0	0.0	0.0	0.0	0.0
1990-91	0.0	0.0	0.0	0.0	0.0	0.0	0.0	0.0	0.0	0.0	0.0	0.0	0.0
1991-92	0.0	0.0	0.0	0.0	0.0	0.0	0.0	0.0	0.0	0.0	0.0	0.0	0.0
1992-93	0.0	0.0	0.0	0.0	0.0	0.0	0.0	0.0	0.0	0.0	0.0	0.0	0.0
1993-94	0.0	0.0	0.0	0.0	0.0	0.0	0.0	0.0	0.0	0.0	0.0	0.0	0.0
1994-95	0.0	0.0	0.0	0.0	0.0	0.0	0.0	0.0	0.0	0.0	0.0	0.0	0.0
1995-96	0.0	0.0	0.0	0.0	0.0	0.0	0.0	0.0	0.0	0.0	0.0	0.0	0.0
1996-97													
1997-98													
1998-99													
1999-													
POR= 48 YRS	0.0	0.0	0.0	0.0	0.0	0.0	0.0	0.0	0.0	0.0	0.0	0.0	0.0

WBAN : 12836

REFERENCE NOTES:

<p>PAGE 1: THE TEMPERATURE GRAPH SHOWS NORMAL MAXIMUM AND NORMAL MINIMUM DAILY TEMPERATURES (SOLID CURVES) AND THE ACTUAL DAILY HIGH AND LOW TEMPERATURES (VERTICAL BARS).</p> <p>PAGE 2 AND 3: H/C INDICATES HEATING AND COOLING DEGREE DAYS. RH INDICATES RELATIVE HUMIDITY W/O INDICATES WEATHER AND OBSTRUCTIONS S INDICATES SUNSHINE. PR INDICATES PRESSURE. CLOUDINESS ON PAGE 3 IS THE SUM OF THE CEILOMETER AND SATELLITE DATA NOT TO EXCEED EIGHT EIGHTHS(OKTAS).</p> <p>GENERAL: T INDICATES TRACE PRECIPITATION, AN AMOUNT GREATER THAN ZERO BUT LESS THAN THE LOWEST REPORTABLE VALUE. + INDICATES THE VALUE ALSO OCCURS ON EARLIER DATES. BLANK ENTRIES DENOTE MISSING OR UNREPORTED DATA. NORMALS ARE 30-YEAR AVERAGES (1961 - 1990). ASOS INDICATES AUTOMATED SURFACE OBSERVING SYSTEM. PM INDICATES THE LAST DAY OF THE PREVIOUS MONTH. POR (PERIOD OF RECORD) BEGINS WITH THE JANUARY DATA MONTH AND IS THE NUMBER OF YEARS USED TO COMPUTE THE MEAN. INDIVIDUAL MONTHS WITHIN THE POR MAY BE MISSING. WHEN THE POR FOR A NORMAL IS LESS THAN 30 YEARS, THE NORMAL IS PROVISIONAL AND IS BASED ON THE NUMBER OF YEARS INDICATED. 0.* OR * INDICATES THE VALUE OR MEAN-DAYS-WITH IS BETWEEN 0.00 AND 0.05. CLOUDINESS FOR ASOS STATIONS DIFFERS FROM THE NON-ASOS OBSERVATION TAKEN BY A HUMAN OBSERVER. ASOS STATION CLOUDINESS IS BASED ON TIME-AVERAGED CEILOMETER DATA FOR CLOUDS AT OR BELOW 12,000 FEET AND ON SATELLITE DATA FOR CLOUDS ABOVE 12,000 FEET. THE NUMBER OF DAYS WITH CLEAR, PARTLY CLOUDY, AND CLOUDY CONDITIONS FOR ASOS STATIONS IS THE SUM OF THE CEILOMETER AND SATELLITE DATA FOR THE SUNRISE TO SUNSET PERIOD.</p>	<p>GENERAL CONTINUED: CLEAR INDICATES 0 - 2 OKTAS, PARTLY CLOUDY INDICATES 3 - 6 OKTAS, AND CLOUDY INDICATES 7 OR 8 OKTAS. WHEN AT LEAST ONE OF THE ELEMENTS (CEILOMETER OR SATELLITE) IS MISSING, THE DAILY CLOUDINESS IS NOT COMPUTED. WIND DIRECTION IS RECORDED IN TENS OF DEGREES (2 DIGITS) CLOCKWISE FROM TRUE NORTH. "00" INDICATES CALM. "36" INDICATES TRUE NORTH. RESULTANT WIND IS THE VECTOR AVERAGE OF THE SPEED AND DIRECTION. AVERAGE TEMPERATURE IS THE SUM OF THE MEAN DAILY MAXIMUM AND MINIMUM TEMPERATURE DIVIDED BY 2. SNOWFALL DATA COMPRISE ALL FORMS OF FROZEN PRECIPITATION, INCLUDING HAIL. A HEATING (COOLING) DEGREE DAY IS THE DIFFERENCE BETWEEN THE AVERAGE DAILY TEMPERATURE AND 65° F. DRY BULB IS THE TEMPERATURE OF THE AMBIENT AIR. DEW POINT IS THE TEMPERATURE TO WHICH THE AIR MUST BE COOLED TO ACHIEVE 100 PERCENT RELATIVE HUMIDITY. WET BULB IS THE TEMPERATURE THE AIR WOULD HAVE IF THE MOISTURE CONTENT WAS INCREASED TO 100 PERCENT RELATIVE HUMIDITY.</p> <p>ON JULY 1, 1996, THE NATIONAL WEATHER SERVICE BEGAN USING THE "METAR" OBSERVATION CODE THAT WAS ALREADY EMPLOYED BY MOST OTHER NATIONS OF THE WORLD. THE MOST NOTICEABLE DIFFERENCE IN THIS ANNUAL PUBLICATION WILL BE THE CHANGE IN UNITS FROM TENTHS TO EIGHTHS(OKTAS) FOR REPORTING THE AMOUNT OF SKY COVER.</p>
---	---

1999
KEY WEST,
FLORIDA (EYW)

Key West is located at the end of the Overseas Highway and near the western end of the Florida Keys, which are a chain of islands swinging in a southwesterly arc from the southeast coast of the Florida peninsula. The nearest point of the mainland is about 60 statute miles to the northeast, while Cuba at its closest point is 98 miles south. The city occupies the island of the same name which is 3 1/2 miles long and 1 mile wide. Its mean elevation is around 8 feet. The maximum elevation of 18 feet covers only about one acre in the western portion. Soil is a thin layer of sand, or marlfill, overlying a stratum of Oolitic limestone. Vegetation on the eastern end of the island is scanty, chiefly of low growth. The western end, where settlement and landscaping are older, has a little heavier growth. The airport and Weather Service Office are located on the southeast shore on partially filled mangrove swamp.

The waters surrounding the key are quite shallow up to the mainland on the northeast and for 6 miles to the reef on the south. There is little wave action because the reef disrupts any established wave pattern.

Because of the nearness of the Gulf Stream in the Straits of Florida, about 12 miles south and southeast, and the tempering effects of the Gulf of Mexico to the west and north, Key West has a notably mild, tropical-maritime climate in which the average temperatures during the winter are about 14 degrees lower than in summer. Cold fronts are strongly modified by the warm water as they move in from northerly quadrants in winter. There is no known record of frost, ice, sleet, or snow in Key West. Prevailing easterly tradewinds and sea breezes suppress the usual summertime heating. Diurnal variations throughout the year average only about 10 degrees.

Precipitation is characterized by dry and wet seasons. The period of December through April receives abundant sunshine and slightly less than 25 percent of the annual rainfall. This rainfall usually occurs in advance of cold fronts in a few heavy showers, or occasionally five to eight light showers per month. June through October is normally the wet season, receiving approximately 53 percent of the yearly total in numerous showers and thunderstorms. Early morning is the favored time for diurnal showers. Easterly waves during this season occasionally bring excessive rainfall, while infrequent hurricanes may be accompanied by unusually heavy amounts. Humidity remains relatively high during the entire year.

STATION LOCATION

KEY WEST, FLORIDA

LOCATION	OCCUPIED FROM	OCCUPIED TO	AIRLINE DISTANCES AND DIRECTIONS FROM PREVIOUS LOCATION	LATITUDE NORTH	LONGITUDE WEST	ELEVATION ABOVE											AUCI M T S W	* Type M = AMOS T = AUTOB S = ASOS W = AWOS	REMARKS
						SEA LEVEL	GROUND												
							G	W	E	P	S	T	R	W	8	H			
<p><u>CITY</u> -- NOTE: For period November 1, 1870 through December 31, 1886, refer to previous editions.</p>																			
Waite Building (Pierce Building) at Duval & Front	1/01/87	5/22/03	2 blocks E	24°33'	81°48'	2	50	42	41										
Weather Bureau Building Front & Eaton	5/23/03	9/30/11	600 yds. S	24°33'	81°48'	6	53	11	11				3						Building damaged by 1909 and 1910 storms.
Island City Bank Bldg. 205 Duval Street	10/01/11	1/22/13	500 yds. NE	24°33'	81°48'	3	50	41	41				32						Location while new observatory being built.
Weather Bureau Building Front & Eaton	1/23/13	3/28/50	500 yds. SW	24°33'	81°48'	6	64	10	10				3						
U.S. Post Office Bldg. Simonton & Caroline Streets	3/29/50	9/03/63	700 yds. ESE	24°33'	81°48'	9	55	5	5				40						Reduced to hurricane standby and climatological status 7/1/57.
<u>AIRPORT</u> Easterly end of Key West Island; Airways Station Bldg. 4 miles east of Post Office	8/24/31	11/02/42		24°34'	81°45'	3	30	4	4							2			Operated by Airways Dept. of Lighthouse Service, Department of Commerce, until 1/25/37.
Boca Chica Airport, 8 miles E. of P.O. on U.S. 1 Highway in CAA Building	11/03/42	3/09/44	4 mi. E	24°35'	81°42'	5	26	5	5							3			
Boca Chica Airport, 1st Floor Operations Bldg.	3/09/44	6/22/44	100 yds. W	24°35'	81°42'	6	76	5	5							3			CAA Personnel and one Weather Bureau employee.
Boca Chica Airport 2nd Floor, Operations Building above CAA	6/22/44	6/30/53	Immediately above	24°35'	81°42'	6	76	19	18							15			Airport Station with full complement established. Consolidated at WBO 6/30/53.
Key West International Airport	7/01/57	3/01/58	3 mi. E of P.O.	24°33'	81°45'	5	50	24	24						21	21			Airport Station re-established 7/1/57.
Key West International Airport	3/01/58	03/01/96	Not moved	24°33'	81°45'	c4	a23 g60	e18	18	%45	f15	f17	d15	b5 h4 14	NA				a - 35 feet to 6/9/64. b - Commissioned 850 feet NW of thermometer site 7/1/64. Moved 150 feet S 1/25/78. c - 5 feet to 7/1/64. d - Removed March 1971. e - Removed 5/8/74. f - Minor relocation 5/8/74. g - Moved from center of runway to tower on building, 1/25/78. % - Commissioned 9/13/62; h - Moved from W to 1000' ENE of terminal building 5/1/83 i - Type change 6/12/85.
International Airport	03/01/96	Present	NA	24°33'	81°45'	19										S			ASOS Commissioned 03/01/96

SUBSCRIPTION: Price and ordering information available through: National Climatic Data Center, Federal Building, Asheville, North Carolina 28801.
 INQUIRIES/COMMENTS CALL: (828) 271-4800

National Climatic Data Center
 151 Patton Avenue, Rm 120
 Asheville NC 28801-5001

OFFICIAL BUSINESS
 PENALTY FOR PRIVATE USE \$300
 FORWARD AND ADDRESS CORRECTION

FIRST CLASS
 POSTAGE & FEES PAID
 United States Department of Commerce
 NOAA Permit No. G - 19