

1999

LOCAL CLIMATOLOGICAL DATA  
ANNUAL SUMMARY WITH COMPARATIVE DATA



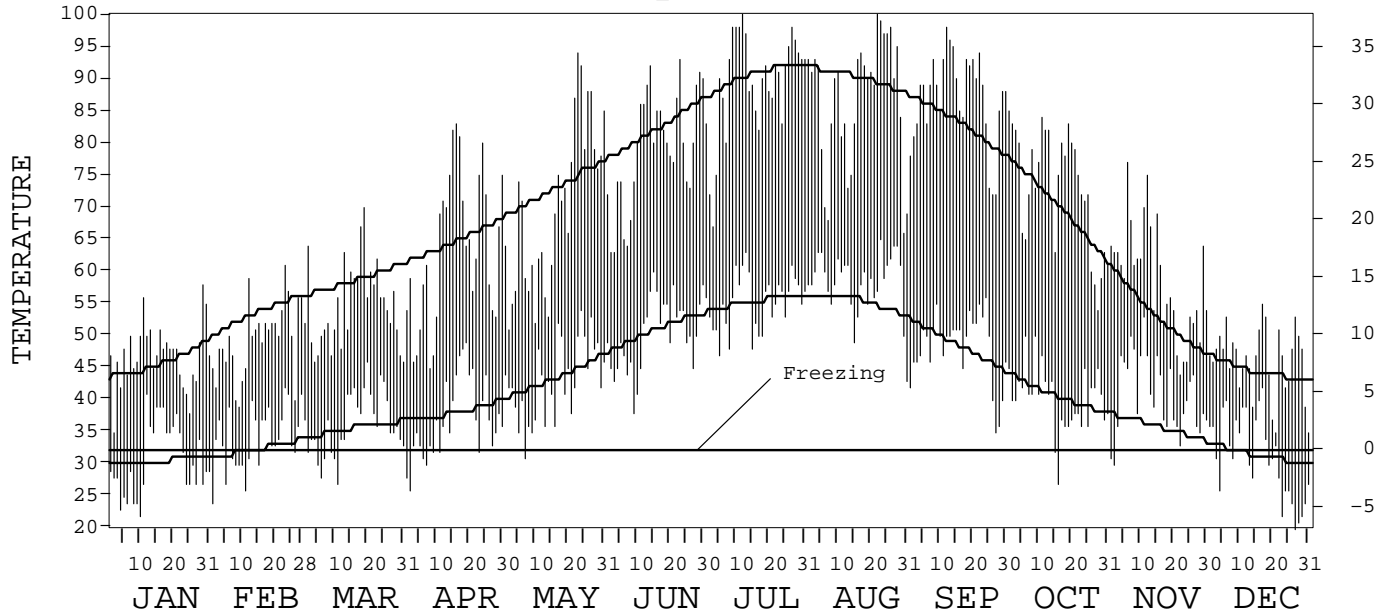
ISSN 0198-4152

MEDFORD,  
OREGON (MFR)

Daily Data

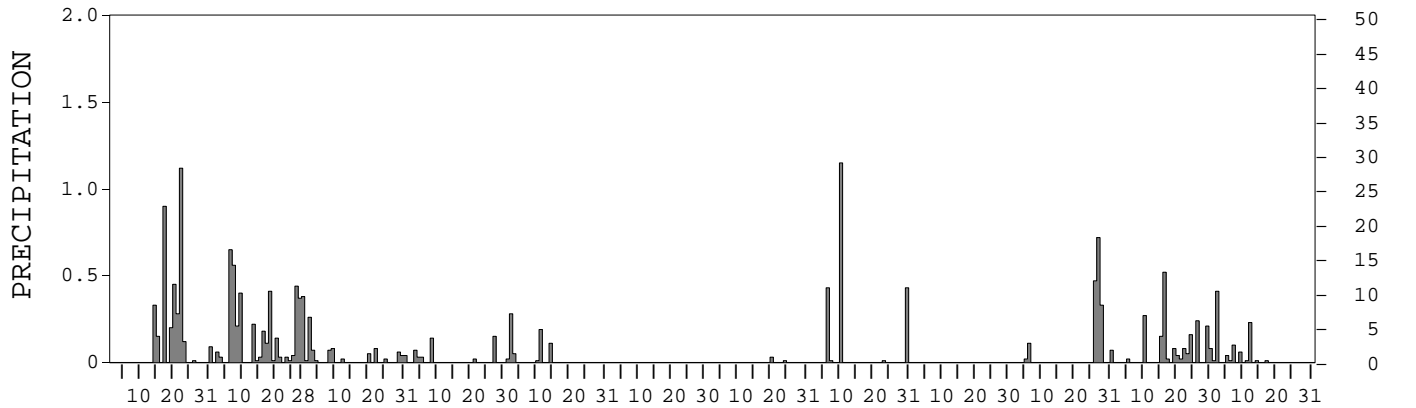
Fahrenheit

Celsius



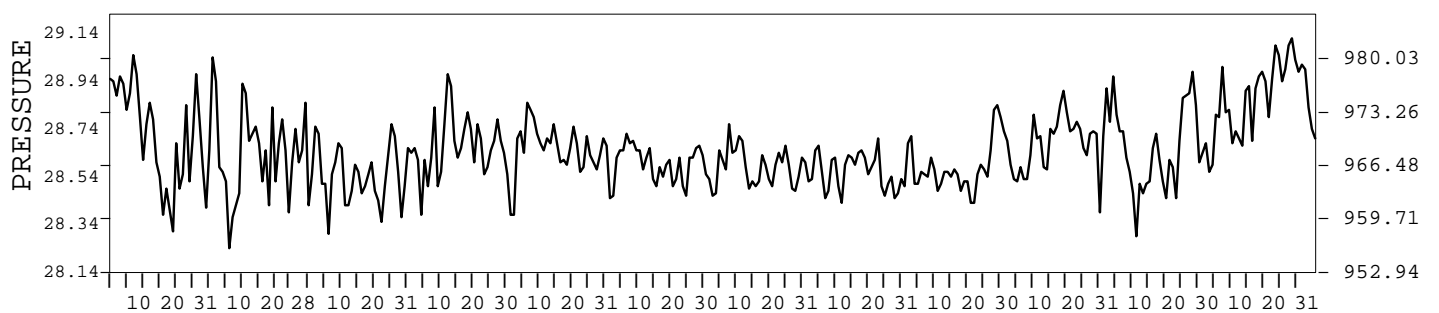
Inches

Millimeters



Inches of Mercury

Hectopascals



I CERTIFY THAT THIS IS AN OFFICIAL PUBLICATION OF THE NATIONAL OCEANIC AND ATMOSPHERIC ADMINISTRATION, AND IS COMPILED FROM RECORDS ON FILE AT THE NATIONAL CLIMATIC DATA CENTER.

*Thomas R. Karl*

NATIONAL OCEANIC AND ATMOSPHERIC ADMINISTRATION  
 NATIONAL ENVIRONMENTAL AND INFORMATION SERVICE  
 NATIONAL ENVIRONMENTAL AND INFORMATION SERVICE  
 NATIONAL CLIMATIC DATA CENTER  
 NATIONAL CLIMATIC DATA CENTER  
 DIRECTOR NATIONAL CLIMATIC DATA CENTER  
 ASHEVILLE, NORTH CAROLINA

# METEOROLOGICAL DATA FOR 1999

## MEDFORD, OR (MFR)

LATITUDE: 42° 23' 21" N      LONGITUDE: 122° 52' 17" W      ELEVATION (FT): GRND: 1331      BARO: 1331      TIME ZONE: PACIFIC (UTC + 8)      WBAN: 24225

	ELEMENT	JAN	FEB	MAR	APR	MAY	JUN	JUL	AUG	SEP	OCT	NOV	DEC	YEAR	
TEMPERATURE ° F	MEAN DAILY MAXIMUM	46.9	49.5	54.7	63.5	70.1	79.1	89.2	86.7	87.1	73.0	58.7	46.1	67.0	
	HIGHEST DAILY MAXIMUM	58	61	70	83	94	93	100	100	98	85	77	55	100	
	DATE OF OCCURRENCE	29	23	19	16	23	23	12	22	12	01	06	17	AUG 22	
	MEAN DAILY MINIMUM	30.7	34.1	36.3	37.1	43.0	50.3	55.2	58.3	48.3	40.3	40.8	31.2	42.1	
	LOWEST DAILY MINIMUM	22	24	27	26	31	38	47	43	35	27	30	20	20	
	DATE OF OCCURRENCE	10	01	11	02	07	09	05	31	27	16	02	27	DEC 27	
	AVERAGE DRY BULB	38.8	41.8	45.5	50.3	56.6	64.7	72.2	72.5	67.7	56.7	49.8	38.7	54.6	
	MEAN WET BULB	35.8	38.4	39.8	43.0	48.3	53.8	57.7	60.2	53.8	47.5	45.7	36.1	46.7	
	MEAN DEW POINT	33.0	34.3	33.7	34.7	40.5	44.3	46.6	52.2	42.7	39.8	41.6	34.2	39.8	
	NUMBER OF DAYS WITH:														
	MAXIMUM ≥ 90°	0	0	0	0	2	4	18	18	11	0	0	0	0	53
	MAXIMUM ≤ 32°	0	0	0	0	0	0	0	0	0	0	0	0	0	0
	MINIMUM ≤ 32°	19	10	7	7	1	0	0	0	0	2	2	17	65	
MINIMUM ≤ 0°	0	0	0	0	0	0	0	0	0	0	0	0	0		
H/C	HEATING DEGREE DAYS	804	643	596	432	276	85	10	18	34	251	449	808	4406	
	COOLING DEGREE DAYS	0	0	0	0	24	84	240	257	121	1	0	0	727	
RH	MEAN (PERCENT)	84	78	68	60	60	51	45	55	48	63	78	88	65	
	HOUR 04 LST	92	88	83	80	82	73	70	77	72	82	87	94	82	
	HOUR 10 LST	89	81	70	57	55	47	41	55	45	61	82	92	65	
	HOUR 16 LST	67	63	47	39	39	30	22	31	20	35	62	73	44	
	HOUR 22 LST	86	80	72	62	61	55	47	58	48	68	82	90	67	
S	PERCENT POSSIBLE SUNSHINE														
W/O	NUMBER OF DAYS WITH:														
	HEAVY FOG (VISBY ≤ 1/4 MI)	13	2	1	1	0	0	0	0	0	1	13	16	47	
	THUNDERSTORMS	0	0	0	0	0	0	2	5	0	0	0	0	7	
CLOUDINESS	SUNRISE-SUNSET: (OKTAS)														
	CEILOMETER (≤ 12,000 FT.)														
	SATELLITE (> 12,000 FT.)														
	MIDNIGHT-MIDNIGHT: (OKTAS)														
	CEILOMETER (≤ 12,000 FT.)														
	SATELLITE (> 12,000 FT.)														
NUMBER OF DAYS WITH:															
CLEAR															
PARTLY CLOUDY															
CLOUDY															
PR	MEAN STATION PRESS. (IN.)	28.71	28.64	28.55	28.67	28.65	28.59	28.58	28.57	28.58	28.70	28.63	28.89	28.65	
	MEAN SEA-LEVEL PRESS. (IN.)	30.15	30.07	29.97	30.09	30.06	29.99	29.96	29.95	29.97	30.11		30.34		
WINDS	RESULTANT SPEED (MPH)	0.3	1.4	1.5	2.0	2.6	2.5	1.8	2.6	0.5	0.4	2.4	0.3	0.9	
	RES. DIR. (TENS OF DEGS.)	21	19	25	32	32	30	30	30	30	27	16	31	29	
	MEAN SPEED (MPH)	2.7	5.4	5.4	5.2	5.1	5.5	5.1	4.7	2.9	2.4	5.3	1.7	4.3	
	PREVAIL. DIR. (TENS OF DEGS.)	15	01	29	30	29	29	28	29	18	30	14	35	29	
	MAXIMUM 2-MINUTE WIND:														
	SPEED (MPH)	23	36	33	29	28	29	25	43	17	24	34	25	43	
	DIR. (TENS OF DEGS.)	14	14	14	13	28	26	02	14	34	17	18	28	14	
	DATE OF OCCURRENCE	29	20	18	15	06	24	20	23	05	27	29+	02	AUG 23	
	MAXIMUM 5-SECOND WIND:														
	SPEED (MPH)	28	46	40	33	34	33	28	54	21	31	44	37	54	
DIR. (TENS OF DEGS.)	15	13	14	13	28	28	03	14	36	17	19	28	14		
DATE OF OCCURRENCE	29	20	18	15	06	24	20	23	25+	27	29	02	AUG 23		
PRECIPITATION	WATER EQUIVALENT:														
	TOTAL (IN.)	3.65	4.32	0.81	0.44	0.66	T	0.04	2.03	0.00	1.72	1.94	0.89	16.50	
	GREATEST 24-HOUR (IN.)	1.12	0.75	0.33	0.15	0.29	T	0.03	1.15	0.00	1.02	0.54	0.42	1.15	
	DATE OF OCCURRENCE	22	27-28	02-03	27	01-02	21+	20	10		27-28	16-17	01-02	AUG 10	
	NUMBER OF DAYS WITH:														
	PRECIPITATION ≥ 0.01	10	21	13	6	6	0	2	5	0	6	14	10	93	
PRECIPITATION ≥ 0.10	8	12	1	2	3	0	0	3	0	4	6	3	42		
PRECIPITATION ≥ 1.00	1	0	0	0	0	0	0	1	0	0	0	0	2		
SNOWFALL	SNOW, ICE PELLETS, HAIL:														
	TOTAL (IN.)														
	GREATEST 24-HOUR (IN.)														
	DATE OF OCCURRENCE														
	MAXIMUM SNOW DEPTH (IN.)														
	DATE OF OCCURRENCE														
NUMBER OF DAYS WITH:															
SNOWFALL ≥ 1.0															

# NORMALS, MEANS, AND EXTREMES

## MEDFORD, OR (MFR)

LATITUDE: 42° 23' 21" N      LONGITUDE: 122° 52' 17" W      ELEVATION (FT): GRND: 1331      BARO: 1331      TIME ZONE: PACIFIC (UTC + 8)      WBAN: 24225

ELEMENT		POR	JAN	FEB	MAR	APR	MAY	JUN	JUL	AUG	SEP	OCT	NOV	DEC	YEAR
TEMPERATURE °F	NORMAL DAILY MAXIMUM	30	45.7	53.3	58.5	64.6	72.9	82.1	90.5	89.9	82.8	69.4	52.6	44.3	67.2
	MEAN DAILY MAXIMUM	52	45.9	53.2	58.0	64.5	72.5	81.1	90.3	89.3	83.2	69.2	53.1	44.7	67.1
	HIGHEST DAILY MAXIMUM	70	71	79	86	93	103	111	115	114	110	99	77	72	115
	YEAR OF OCCURRENCE		1981	1992	1930	1987	1986	1992	1946	1981	1988	1980	1999	1962	JUL 1946
	MEAN OF EXTREME MAXS.	52	59.9	66.4	72.8	81.7	91.1	97.7	102.9	102.0	98.6	86.8	68.3	59.6	82.3
	NORMAL DAILY MINIMUM	30	30.4	32.2	35.4	38.0	43.4	50.7	55.2	55.1	48.2	40.4	35.5	31.2	41.3
	MEAN DAILY MINIMUM	52	30.4	32.4	34.8	38.0	43.5	49.8	54.7	54.3	48.0	39.9	35.0	31.4	41.0
	LOWEST DAILY MINIMUM	70	-3	6	16	21	28	31	38	39	29	18	10	-6	-6
	YEAR OF OCCURRENCE		1930	1950	1956	1936	1996	1952	1976	1962	1950	1971	1978	1972	DEC 1972
	MEAN OF EXTREME MINS.	52	18.5	21.5	25.0	28.5	32.8	39.3	44.7	45.6	37.5	28.8	23.2	19.1	30.4
	NORMAL DRY BULB	30	38.1	42.8	47.0	51.3	58.2	66.5	72.9	72.5	65.5	54.9	44.1	37.8	54.3
	MEAN DRY BULB	52	38.2	42.8	46.5	51.3	58.0	65.5	72.6	71.8	65.5	54.6	44.0	38.0	54.1
	MEAN WET BULB	16	37.1	39.5	42.8	46.4	50.6	55.3	59.4	59.1	54.5	48.0	41.4	35.6	47.5
	MEAN DEW POINT	16	34.4	35.3	37.4	40.0	43.3	46.7	49.7	49.2	45.5	41.6	38.7	33.5	41.3
	NORMAL NO. DAYS WITH:														
MAXIMUM ≥ 90°	30	0.0	0.0	0.0	0.1	1.8	8.2	18.0	17.3	8.3	0.9	0.0	0.0	54.6	
MAXIMUM ≤ 32°	30	1.0	*	0.0	0.0	0.0	0.0	0.0	0.0	0.0	0.0	*	2.0	3.0	
MINIMUM ≤ 32°	30	19.7	14.8	11.3	6.6	0.9	0.0	0.0	0.0	0.2	4.1	10.9	17.1	85.6	
MINIMUM ≤ 0°	30	*	0.0	0.0	0.0	0.0	0.0	0.0	0.0	0.0	0.0	0.0	0.2	0.2	
H/C	NORMAL HEATING DEG. DAYS	30	834	622	558	416	219	60	8	11	93	320	627	843	4611
	NORMAL COOLING DEG. DAYS	30	0	0	0	0	8	105	253	244	108	7	0	0	725
RH	NORMAL (PERCENT)	30	84	78	71	65	61	54	48	50	57	70	84	86	67
	HOUR 04 LST	30	90	88	86	84	83	78	73	74	79	86	91	91	84
	HOUR 10 LST	30	88	83	72	63	56	49	44	47	54	70	87	89	67
	HOUR 16 LST	30	71	58	50	44	39	33	26	27	30	44	68	76	47
	HOUR 22 LST	30	87	81	74	68	65	58	50	52	61	77	88	89	71
S	PERCENT POSSIBLE SUNSHINE														
W/O	MEAN NO. DAYS WITH:														
	HEAVY FOG (VISBY ≤ 1/4 MI)	70	11.7	5.5	1.6	0.4	0.2	0.2	0.0	0.1	0.5	4.4	10.6	13.3	48.5
	THUNDERSTORMS	70	0.0	0.1	0.2	0.7	1.7	1.8	1.6	1.3	0.9	0.3	0.0	0.0	8.6
CLOUDINESS	MEAN:														
	SUNRISE-SUNSET (OKTAS)	67	6.6	6.1	5.8	5.4	4.6	3.7	1.7	2.0	2.7	4.4	6.3	6.8	4.7
	MIDNIGHT-MIDNIGHT (OKTAS)	33	6.3	5.7	5.4	5.3	4.2	3.5	1.7	2.0	2.5	3.9	6.2	6.6	4.4
	MEAN NO. DAYS WITH:														
	CLEAR	68	2.6	3.7	5.2	5.8	9.3	12.9	22.6	21.3	17.5	10.4	3.3	2.1	116.7
PARTLY CLOUDY	68	4.9	5.8	6.6	8.3	9.0	8.2	5.4	5.6	6.4	8.2	6.0	4.0	78.4	
CLOUDY	68	23.5	18.8	19.2	16.0	12.8	9.1	2.7	3.6	5.7	12.0	20.3	24.5	168.2	
PR	MEAN STATION PRESSURE (IN)	27	28.68	28.65	28.60	28.64	28.64	28.60	28.60	28.58	28.60	28.66	28.69	28.73	28.64
	MEAN SEA-LEVEL PRES. (IN)	16	30.12	30.07	30.05	30.05	30.00	29.99	29.98	29.96	29.98	30.07	30.14	30.16	30.05
WINDS	MEAN SPEED (MPH)	45	4.2	4.7	5.3	5.7	5.8	6.0	5.8	5.4	4.5	3.7	3.6	3.6	4.9
	PREVAIL. DIR (TENS OF DEGS)	29	36	36	31	30	30	30	30	30	30	30	36	36	30
	MAXIMUM 2-MINUTE:														
	SPEED (MPH)	2	41	41	33	29	28	29	25	43	47	24	34	31	47
	DIR. (TENS OF DEGS)		13	13	14	13	12	26	02	14	14	17	18	14	14
	YEAR OF OCCURRENCE		1998	1998	1999	1999	1998	1999	1999	1999	1998	1999	1999	1998	SEP 1998
	MAXIMUM 5-SECOND:														
SPEED (MPH)	2	49	49	40	33	39	33	28	54	59	31	44	38	59	
DIR. (TENS OF DEGS)		13	12	14	21	14	28	03	14	14	17	19	14	14	
YEAR OF OCCURRENCE		1998	1998	1999	1998	1998	1999	1999	1999	1998	1999	1999	1998	SEP 1998	
PRECIPITATION	NORMAL (IN)	30	2.69	1.93	1.82	1.16	1.00	0.58	0.26	0.52	0.86	1.49	3.23	3.32	18.86
	MAXIMUM MONTHLY (IN)	70	6.67	5.67	5.54	3.07	4.58	3.49	1.63	2.83	4.22	9.16	8.62	12.72	12.72
	YEAR OF OCCURRENCE		1936	1983	1957	1965	1945	1931	1966	1976	1977	1950	1942	1964	DEC 1964
	MINIMUM MONTHLY (IN)	70	0.19	0.20	0.29	0.16	T	0.00	0.00	0.00	0.00	T	0.01	0.36	0.00
	YEAR OF OCCURRENCE		1984	1988	1969	1949	1982	1951	1970	1981	1974	1987	1936	1976	AUG 1981
	MAXIMUM IN 24 HOURS (IN)	70	3.17	2.96	1.61	1.05	1.67	1.96	1.07	1.15	3.09	2.92	2.99	3.75	3.75
	YEAR OF OCCURRENCE		1943	1956	1972	1965	1956	1931	1966	1999	1977	1950	1953	1964	DEC 1964
	NORMAL NO. DAYS WITH:														
PRECIPITATION ≥ 0.01	30	12.6	11.0	11.9	9.7	7.0	4.9	1.7	3.1	4.2	7.4	13.7	13.8	101.0	
PRECIPITATION ≥ 1.00	30	0.5	0.3	0.1	0.0	0.0	0.0	*	0.0	0.1	0.2	0.6	0.5	2.3	
SNOWFALL	NORMAL (IN)	30	3.0	0.8	0.7	0.2	T	0.0	0.0	0.0	T	0.4	2.3	7.4	
	MAXIMUM MONTHLY (IN)	68	22.6	11.6	8.1	4.2	0.1	T	T	T	0.0	1.3	11.4	12.2	22.6
	YEAR OF OCCURRENCE		1930	1956	1956	1953	1988	1991	1996	1997		1956	1955	1972	JAN 1930
	MAXIMUM IN 24 HOURS (IN)	68	9.3	5.2	7.9	4.2	0.1	T	T	T	0.0	1.3	8.5	4.2	9.3
	YEAR OF OCCURRENCE		1971	1956	1956	1953	1988	1991	1994	1997		1956	1977	1964	JAN 1971
	MAXIMUM SNOW DEPTH (IN)	49	6	3	6	0	0	0	0	0	0	0	7	6	7
	YEAR OF OCCURRENCE		1971	1956	1956								1977	1972	NOV 1977
NORMAL NO. DAYS WITH:															
SNOWFALL ≥ 1.0	30	1.0	0.2	0.2	0.1	0.0	0.0	0.0	0.0	0.0	0.0	0.1	0.8	2.4	

PRECIPITATION (inches) 1999 MEDFORD, OR (MFR)

YEAR	JAN	FEB	MAR	APR	MAY	JUN	JUL	AUG	SEP	OCT	NOV	DEC	ANNUAL
1970	6.19	1.70	1.13	1.44	0.34	0.59	0.00	0.34	0.22	1.39	6.57	3.36	23.27
1971	3.68	1.43	2.72	1.34	1.13	0.97	0.07	0.28	1.24	0.61	3.43	2.45	19.35
1972	3.55	2.49	3.62	0.94	1.61	1.59	T	0.36	0.52	1.21	1.50	3.23	20.62
1973	1.98	0.54	1.58	0.76	0.45	0.06	0.04	0.03	0.64	2.79	7.01	3.02	18.90
1974	4.32	2.78	3.26	1.70	0.22	T	0.10	T	0.00	1.17	1.13	3.91	18.59
1975	2.64	2.64	3.97	1.27	0.24	0.38	0.22	0.54	0.65	2.21	1.85	2.74	19.35
1976	1.62	2.21	1.13	1.67	0.11	0.04	0.84	2.83	0.90	0.18	0.43	0.36	12.32
1977	1.17	0.67	1.12	0.81	2.37	0.53	0.23	0.36	4.22	0.96	4.91	4.81	22.16
1978	1.53	2.45	2.03	1.26	1.59	1.02	0.54	1.46	1.68	0.01	1.50	0.66	15.73
1979	2.81	1.54	0.83	2.24	1.42	0.55	0.02	0.63	0.32	3.98	3.17	2.73	20.24
1980	2.59	1.78	1.27	1.75	0.69	1.22	0.02	0.00	0.18	1.52	2.28	2.59	15.89
1981	0.54	1.72	1.23	0.55	1.17	0.47	0.41	0.00	0.52	1.23	6.05	8.02	21.91
1982	1.43	3.64	2.30	0.87	T	0.85	0.07	0.03	0.97	1.60	2.17	5.31	19.24
1983	0.92	5.67	3.21	1.12	0.81	0.66	0.59	2.21	2.05	1.21	4.97	6.73	30.15
1984	0.19	2.50	2.05	1.11	0.39	0.79	0.16	0.40	0.51	1.93	6.56	1.96	18.55
1985	0.23	1.58	1.22	0.39	1.00	0.37	T	0.02	1.53	1.50	2.02	0.83	10.69
1986	1.99	5.22	1.02	0.23	1.19	0.45	T	T	2.31	1.49	2.45	0.72	17.07
1987	2.89	2.24	1.34	0.45	0.95	0.12	1.34	T	0.00	T	1.68	3.77	14.78
1988	2.53	0.20	0.57	1.07	1.51	1.04	0.00	0.02	0.22	0.12	5.14	1.28	13.70
1989	2.33	0.78	3.94	2.42	1.01	0.16	T	0.41	1.94	0.71	0.71	0.68	15.09
1990	2.94	1.06	1.49	0.82	1.86	0.17	0.11	0.99	0.13	1.29	1.52	1.12	13.50
1991	1.55	1.73	2.42	1.07	1.84	0.68	1.10	0.22	T	0.39	2.42	1.08	14.50
1992	0.84	0.63	0.42	1.10	1.30	2.62	0.58	T	0.06	2.37	1.54	3.52	14.98
1993	2.65	1.37	1.25	1.83	2.63	1.23	0.66	1.21	T	0.66	0.68	2.43	16.60
1994	1.06	1.21	1.35	0.58	0.57	0.12	0.21	0.00	0.83	0.46	4.64	1.07	12.10
1995	3.76	0.40	2.63	2.49	0.54	1.54	1.17	T	0.12	0.20	1.26	7.66	21.77
1996	5.44	2.96	1.55	1.30	2.89	0.22	0.30	0.08	0.49	2.20	4.04	9.94	31.41
1997	3.44	1.11	1.00	1.98	1.09	1.42	0.02	1.39	0.83	2.19	2.10	1.36	17.93
1998	4.78	3.27	2.73	2.25	4.26	0.67	0.00	0.00	0.05	1.81	7.67	1.23	28.72
1999	3.65	4.32	0.81	0.44	0.66	T	0.04	2.03	0.00	1.72	1.94	0.89	16.50
POR= 88 YRS	2.76	2.09	1.65	1.19	1.23	0.82	0.20	0.33	0.68	1.52	2.85	3.11	18.43

WBAN : 24225

AVERAGE TEMPERATURE (°F) 1999 MEDFORD, OR (MFR)

YEAR	JAN	FEB	MAR	APR	MAY	JUN	JUL	AUG	SEP	OCT	NOV	DEC	ANNUAL
1970	42.5	44.0	47.0	46.2	57.9	68.7	75.8	73.7	62.7	53.1	47.4	38.1	54.8
1971	36.1	40.8	44.9	48.4	55.8	61.4	73.1	74.1	62.6	51.1	41.5	36.1	52.2
1972	36.0	43.2	49.8	48.0	57.9	65.4	74.9	73.0	60.8	52.4	44.8	31.5	53.1
1973	37.9	46.2	45.0	52.1	62.4	67.5	75.2	72.0	66.9	53.4	45.8	43.6	55.7
1974	38.7	39.7	44.8	47.9	56.4	67.7	71.3	73.0	69.7	54.0	44.4	38.9	53.9
1975	36.6	41.8	43.3	45.1	57.4	63.9	72.3	68.4	68.9	51.5	41.3	39.3	52.5
1976	38.8	40.2	42.8	48.0	57.3	61.7	71.5	67.3	65.5	54.1	43.6	31.7	51.9
1977	34.0	44.0	43.0	53.0	53.3	69.7	72.0	76.0	63.8	53.1	42.3	42.4	53.9
1978	44.0	44.5	50.5	49.7	56.4	66.4	72.6	70.9	59.1	56.9	39.2	33.4	53.6
1979	35.5	41.9	49.2	51.1	57.6	65.9	72.6	70.3	68.3	59.1	42.4	39.8	54.5
1980	38.7	45.6	44.8	52.2	56.3	61.3	73.1	68.9	65.4	55.8	43.8	38.1	53.7
1981	41.7	42.1	46.9	52.8	57.2	65.5	71.2	74.9	66.6	52.2	45.9	42.8	55.0
1982	34.6	41.2	44.5	48.8	58.0	67.1	71.6	71.9	62.8	54.9	42.1	38.9	53.0
1983	39.7	44.6	48.9	49.1	59.6	64.2	68.6	73.0	63.6	54.3	43.7	40.4	54.1
1984	38.8	43.0	48.9	49.3	58.3	63.3	73.8	71.8	65.2	51.5	44.5	36.3	53.7
1985	37.6	42.1	44.1	56.2	57.9	68.2	76.4	71.0	61.0	53.1	38.1	36.1	53.5
1986	44.0	46.4	51.6	51.4	59.1	70.4	70.5	77.1	60.8	55.6	44.7	37.8	55.8
1987	38.3	44.1	47.9	56.6	62.3	70.4	70.0	74.2	66.6	61.2	46.7	39.4	56.5
1988	39.7	44.8	47.2	53.8	56.6	65.5	75.5	73.6	67.4	61.9	45.2	38.3	55.8
1989	37.8	38.3	47.4	57.3	58.4	67.6	70.2	70.7	65.8	54.6	43.0	35.5	53.9
1990	39.9	41.1	49.0	57.5	57.0	66.4	76.3	73.5	69.5	53.5	42.2	31.7	54.8
1991	37.8	47.7	45.9	49.6	54.8	62.9	74.2	73.6	70.7	58.0	46.8	38.3	55.0
1992	40.9	48.4	51.9	56.5	66.3	69.7	74.2	75.7	67.1	57.3	45.4	37.6	57.6
1993	38.5	41.8	51.4	51.5	60.5	63.7	64.8	70.4	67.3	58.5	39.9	38.9	53.9
1994	40.5	41.6	49.1	54.2	61.2	65.4	76.5	72.3	69.3	53.9	38.8	39.3	55.2
1995	45.2	48.2	47.0	50.8	60.4	64.4	72.9	69.9	69.5	55.9	49.1	43.6	56.4
1996	40.7	47.3	48.9	53.2	56.8	65.6	76.7	74.5	64.0	55.0	46.6	41.1	55.9
1997	39.6	42.9	49.3	52.4	64.1	64.3	72.9	73.8	66.1	54.3	47.4	37.6	55.4
1998	43.2	44.4	47.2	51.6	54.2	65.9	76.6	75.5	68.8	52.9	45.7	35.5	55.1
1999	38.8	41.8	45.5	50.3	56.6	64.7	72.2	72.5	67.7	56.7	49.8	38.7	54.6
POR= 88 YRS	38.0	42.6	46.6	51.7	58.2	65.3	72.4	71.5	64.9	54.3	43.9	38.0	54.0

WBAN : 24225

HEATING DEGREE DAYS (base 65°F) 1999 MEDFORD, OR (MFR)

YEAR	JUL	AUG	SEP	OCT	NOV	DEC	JAN	FEB	MAR	APR	MAY	JUN	TOTAL
1970-71	0	0	89	363	520	827	890	674	617	489	280	121	4870
1971-72	16	12	108	424	698	889	891	624	465	505	237	54	4923
1972-73	2	11	178	385	599	1031	835	519	616	379	139	48	4742
1973-74	0	12	28	352	569	654	809	703	620	504	267	30	4548
1974-75	20	6	9	333	611	803	873	642	663	590	249	86	4885
1975-76	18	18	14	416	706	789	807	712	679	503	238	127	5027
1976-77	9	31	48	338	636	1023	952	581	675	358	359	17	5027
1977-78	14	4	105	360	673	694	646	571	444	451	262	44	4268
1978-79	4	15	180	244	768	973	905	639	483	410	223	58	4902
1979-80	8	2	5	203	668	776	807	556	620	376	266	121	4408
1980-81	1	9	56	313	630	827	715	635	553	369	244	57	4409
1981-82	20	0	89	392	566	682	935	660	628	479	223	63	4737
1982-83	13	8	114	310	682	803	775	566	491	474	235	68	4539
1983-84	26	3	77	322	632	757	806	633	491	467	219	108	4541
1984-85	0	0	79	416	608	881	842	635	642	257	225	37	4622
1985-86	0	4	135	368	801	890	644	515	407	407	251	29	4451
1986-87	11	0	197	286	602	833	825	579	524	255	144	32	4288
1987-88	21	0	26	136	540	786	780	579	544	330	268	106	4116
1988-89	1	0	62	115	586	822	837	742	538	228	222	24	4177
1989-90	7	7	40	313	651	906	772	663	489	221	251	55	4375
1990-91	3	5	0	351	680	1022	837	477	588	456	313	82	4814
1991-92	1	1	11	246	541	820	738	476	399	253	48	43	3577
1992-93	0	1	35	233	583	844	816	643	411	397	150	90	4203
1993-94	42	15	65	216	747	804	752	649	488	317	138	70	4303
1994-95	0	0	25	339	782	788	605	465	551	422	170	104	4251
1995-96	0	6	23	276	473	656	746	508	492	349	254	45	3828
1996-97	3	0	89	327	544	731	780	614	479	370	103	59	4099
1997-98	3	0	49	325	519	841	668	572	546	402	326	26	4277
1998-99	0	0	35	366	574	908	804	643	596	432	276	85	4719
1999-	10	18	34	251	449	808							

WBAN : 24225

COOLING DEGREE DAYS (base 65°F) 1999 MEDFORD, OR (MFR)

YEAR	JAN	FEB	MAR	APR	MAY	JUN	JUL	AUG	SEP	OCT	NOV	DEC	ANNUAL
1970	0	0	0	0	15	185	343	278	28	3	0	0	852
1971	0	0	0	0	2	16	275	302	44	2	0	0	641
1972	0	0	0	0	27	70	315	265	58	0	0	0	735
1973	0	0	0	0	64	132	323	233	92	0	0	0	844
1974	0	0	0	0	7	120	224	262	155	0	0	0	768
1975	0	0	0	0	21	60	250	129	140	2	0	0	602
1976	0	0	0	0	6	34	215	110	66	5	0	0	436
1977	0	0	0	2	2	165	239	352	77	0	0	0	837
1978	0	0	0	0	4	93	244	205	11	0	0	0	557
1979	0	0	0	0	2	95	251	172	108	30	0	0	658
1980	0	0	0	0	2	16	257	134	78	35	0	0	522
1981	0	0	0	11	8	78	216	313	144	0	0	0	770
1982	0	0	0	0	14	136	223	228	56	1	0	0	658
1983	0	0	0	0	74	49	144	259	43	0	0	0	569
1984	0	0	0	0	20	64	280	219	90	5	0	0	678
1985	0	0	0	0	10	141	360	196	21	5	0	0	733
1986	0	0	0	5	74	198	189	383	80	0	0	0	929
1987	0	0	0	11	66	203	185	292	81	24	0	0	862
1988	0	0	0	0	12	128	334	276	143	27	0	0	920
1989	0	0	0	4	24	109	176	190	71	0	0	0	574
1990	0	0	0	2	13	99	358	275	142	1	0	0	890
1991	0	0	0	0	0	26	292	271	189	37	0	0	815
1992	0	0	0	5	96	189	292	338	102	2	0	0	1024
1993	0	0	0	0	17	58	42	188	140	20	0	0	465
1994	0	0	0	2	31	89	363	234	159	2	0	0	880
1995	0	0	0	0	34	95	253	163	164	0	0	0	709
1996	0	0	0	0	8	70	375	301	66	25	0	0	845
1997	0	0	0	0	82	43	254	283	87	0	0	0	749
1998	0	0	0	9	0	60	366	330	154	0	0	0	919
1999	0	0	0	0	24	84	240	257	121	1	0	0	727

SNOWFALL (inches) 1999 MEDFORD, OR (MFR)

YEAR	JUL	AUG	SEP	OCT	NOV	DEC	JAN	FEB	MAR	APR	MAY	JUN	TOTAL
1970-71	0.0	0.0	0.0	0.0	T	0.1	10.5	2.3	5.0	T	0.0	0.0	17.9
1971-72	0.0	0.0	0.0	T	T	2.8	0.3	0.9	2.6	T	T	0.0	6.6
1972-73	0.0	0.0	0.0	0.0	0.0	12.2	2.7	0.0	T	T	0.0	0.0	14.9
1973-74	0.0	0.0	0.0	0.0	T	T	T	5.2	0.3	0.0	T	0.0	5.5
1974-75	0.0	0.0	0.0	0.0	0.0	5.4	6.6	1.9	T	0.4	T	0.0	14.3
1975-76	0.0	0.0	0.0	0.0	0.4	2.3	2.1	1.0	0.2	T	0.0	0.0	6.0
1976-77	0.0	0.0	0.0	0.0	0.0	0.1	1.0	T	T	T	T	0.0	1.1
1977-78	0.0	0.0	0.0	0.0	8.5	0.2	0.0	0.1	0.0	T	0.0	0.0	8.8
1978-79	0.0	0.0	0.0	0.0	T	T	0.6	T	T	T	T	0.0	0.6
1979-80	0.0	0.0	0.0	0.0	T	0.1	0.3	T	0.1	T	0.0	0.0	0.5
1980-81	0.0	0.0	0.0	0.0	0.0	0.4	T	T	T	0.0	0.0	0.0	0.4
1981-82	0.0	0.0	0.0	0.0	0.0	3.0	4.1	T	1.8	T	0.0	0.0	8.9
1982-83	0.0	0.0	0.0	0.0	T	T	T	0.0	0.0	T	0.0	0.0	T
1983-84	0.0	0.0	0.0	0.0	T	3.4	T	T	0.0	T	T	0.0	3.4
1984-85	0.0	0.0	0.0	T	0.1	0.9	1.8	0.4	2.0	T	0.0	0.0	5.2
1985-86	0.0	0.0	0.0	0.0	0.5	T	0.0	0.1	0.0	T	0.0	0.0	0.6
1986-87	0.0	0.0	0.0	0.0	0.0	T	T	T	T	T	0.0	0.0	T
1987-88	0.0	0.0	0.0	0.0	T	3.8	8.0	T	0.0	T	0.1	0.0	11.9
1988-89	0.0	0.0	0.0	0.0	T	3.4	3.6	1.5	2.2	0.0	0.0	0.0	10.7
1989-90	0.0	0.0	0.0	0.0	T	0.8	0.5	2.2	0.3	0.0	0.0	0.0	3.8
1990-91	0.0	0.0	0.0	0.0	0.0	2.6	T	0.0	0.6	T	T	T	3.2
1991-92	0.0	0.0	0.0	0.0	0.0	T	T	0.0	0.0	0.0	0.0	0.0	T
1992-93	T	0.0	0.0	0.0	0.0	1.0	1.2	1.9	0.0	0.0	0.0	0.0	4.1
1993-94	0.0	0.0	0.0	0.0	0.1	T	T	T	T	0.0	0.0	0.0	0.1
1994-95	T	0.0	0.0	0.0	1.1	0.1	0.4	T	T	T	0.0	0.0	1.6
1995-96	0.0	0.0	0.0	0.0	0.0	0.0	T	1.1	0.2	0.0	T	0.0	1.3
1996-97	T	0.0	0.0	0.0	0.0	T	T	T	T	0.0	0.0	0.0	T
1997-98	0.0	T	0.0	0.0	0.0	1.0							
1998-99						6.7							
1999-													
POR= 67 YRS	T	0.0	0.0	0.0	0.5	1.5	3.1	1.2	0.7	0.2	0.0	T	7.2

WBAN : 24225

REFERENCE NOTES:

<p>PAGE 1: THE TEMPERATURE GRAPH SHOWS NORMAL MAXIMUM AND NORMAL MINIMUM DAILY TEMPERATURES (SOLID CURVES) AND THE ACTUAL DAILY HIGH AND LOW TEMPERATURES (VERTICAL BARS).</p> <p>PAGE 2 AND 3: H/C INDICATES HEATING AND COOLING DEGREE DAYS. RH INDICATES RELATIVE HUMIDITY W/O INDICATES WEATHER AND OBSTRUCTIONS S INDICATES SUNSHINE. PR INDICATES PRESSURE. CLOUDINESS ON PAGE 3 IS THE SUM OF THE CEILOMETER AND SATELLITE DATA NOT TO EXCEED EIGHT EIGHTHS(OKTAS).</p> <p>GENERAL: T INDICATES TRACE PRECIPITATION, AN AMOUNT GREATER THAN ZERO BUT LESS THAN THE LOWEST REPORTABLE VALUE. + INDICATES THE VALUE ALSO OCCURS ON EARLIER DATES. BLANK ENTRIES DENOTE MISSING OR UNREPORTED DATA. NORMALS ARE 30-YEAR AVERAGES (1961 - 1990). ASOS INDICATES AUTOMATED SURFACE OBSERVING SYSTEM. PM INDICATES THE LAST DAY OF THE PREVIOUS MONTH. POR (PERIOD OF RECORD) BEGINS WITH THE JANUARY DATA MONTH AND IS THE NUMBER OF YEARS USED TO COMPUTE THE MEAN. INDIVIDUAL MONTHS WITHIN THE POR MAY BE MISSING. WHEN THE POR FOR A NORMAL IS LESS THAN 30 YEARS, THE NORMAL IS PROVISIONAL AND IS BASED ON THE NUMBER OF YEARS INDICATED. 0.* OR * INDICATES THE VALUE OR MEAN-DAYS-WITH IS BETWEEN 0.00 AND 0.05. CLOUDINESS FOR ASOS STATIONS DIFFERS FROM THE NON-ASOS OBSERVATION TAKEN BY A HUMAN OBSERVER. ASOS STATION CLOUDINESS IS BASED ON TIME-AVERAGED CEILOMETER DATA FOR CLOUDS AT OR BELOW 12,000 FEET AND ON SATELLITE DATA FOR CLOUDS ABOVE 12,000 FEET. THE NUMBER OF DAYS WITH CLEAR, PARTLY CLOUDY, AND CLOUDY CONDITIONS FOR ASOS STATIONS IS THE SUM OF THE CEILOMETER AND SATELLITE DATA FOR THE SUNRISE TO SUNSET PERIOD.</p>	<p>GENERAL CONTINUED: CLEAR INDICATES 0 - 2 OKTAS, PARTLY CLOUDY INDICATES 3 - 6 OKTAS, AND CLOUDY INDICATES 7 OR 8 OKTAS. WHEN AT LEAST ONE OF THE ELEMENTS (CEILOMETER OR SATELLITE) IS MISSING, THE DAILY CLOUDINESS IS NOT COMPUTED. WIND DIRECTION IS RECORDED IN TENS OF DEGREES (2 DIGITS) CLOCKWISE FROM TRUE NORTH. "00" INDICATES CALM. "36" INDICATES TRUE NORTH. RESULTANT WIND IS THE VECTOR AVERAGE OF THE SPEED AND DIRECTION. AVERAGE TEMPERATURE IS THE SUM OF THE MEAN DAILY MAXIMUM AND MINIMUM TEMPERATURE DIVIDED BY 2. SNOWFALL DATA COMPRISE ALL FORMS OF FROZEN PRECIPITATION, INCLUDING HAIL. A HEATING (COOLING) DEGREE DAY IS THE DIFFERENCE BETWEEN THE AVERAGE DAILY TEMPERATURE AND 65° F. DRY BULB IS THE TEMPERATURE OF THE AMBIENT AIR. DEW POINT IS THE TEMPERATURE TO WHICH THE AIR MUST BE COOLED TO ACHIEVE 100 PERCENT RELATIVE HUMIDITY. WET BULB IS THE TEMPERATURE THE AIR WOULD HAVE IF THE MOISTURE CONTENT WAS INCREASED TO 100 PERCENT RELATIVE HUMIDITY.</p> <p>ON JULY 1, 1996, THE NATIONAL WEATHER SERVICE BEGAN USING THE "METAR" OBSERVATION CODE THAT WAS ALREADY EMPLOYED BY MOST OTHER NATIONS OF THE WORLD. THE MOST NOTICEABLE DIFFERENCE IN THIS ANNUAL PUBLICATION WILL BE THE CHANGE IN UNITS FROM TENTHS TO EIGHTHS(OKTAS) FOR REPORTING THE AMOUNT OF SKY COVER.</p>
---	---

1999  
MEDFORD,  
OREGON (MFR)

Medford is located in a mountain valley formed by the famous Rogue River and one of its tributaries, Bear Creek. The major portion of the valley ranges in elevation from 1,300 to 1,400 feet above sea level. Mountains surround the valley on all sides, to the east the Cascades, ranging up to 9,500 feet, to the south the Siskiyou, ranging up to 7,600 feet, and to the west and north, the Coast Range and Umpqua Divide, ranging up to 5,500 feet above sea level. The valley exits to the ocean 80 miles westward through the narrow canyon of the Rogue River.

Medford has a moderate climate of marked seasonal characteristics. Late fall, winter, and early spring months are damp, cloudy, and cool under the influence of marine air. Late spring, summer, and early fall are warm, dry, and sunny, due to the dry continental nature of the prevailing winds aloft that cross this area.

The rain shadow afforded by the Siskiyou and Coast Range results in a relatively light annual rainfall, most of which falls during the winter season. Summertime rainfall is brought by thunderstorm activity. Snowfall is quite heavy in the surrounding mountains during the winter, providing excellent skiing. The mountains provide irrigation water storage which is necessary for production of most commercial crops during the dry summer. Valley snowfall is light. Individual accumulations of snow seldom last more than 24 hours and present little hindrance to transportation on the valley floor.

Few extremes of temperature occur. High temperatures in the summer months average slightly below 90 degrees. High temperatures are always

accompanied by low humidity, and hot days give way to cool nights as cool air drains down the mountain slopes into the valley. The length of the growing season is 170 days, from late April to mid-October. The last date of 32 degrees in the spring normally occurs in mid-June and the first date of 32 degrees in the fall occurs in mid-September.

Valley winds are usually very light, prevailing from the north or northwest much of the year. Winds exceeding 10 mph during the winter months nearly always come from the southerly quadrant. Highest velocities are reached when a well developed storm off the northern California coast causes a foehn or chinook wind off the Siskiyou Mountains to the south, speeds to 50 mph are common, and gusts to 70 mph have been recorded occasionally. Summer thunderstorms produce gusty winds to 40 or 50 mph which may come from any direction.

Fog often fills the lower portion of the valley during the winter and early spring months, when rapid clearing of the sky after a storm allows nocturnal cooling of the entrapped, moist air to the saturation point. Duration of the fog is seldom more than three days. Geographical and meteorological conditions contribute to a smoke problem during the fall, winter and early spring months. Smoke, from local sources, occasionally reduces visibility to 1 to 3 miles under stable conditions.

# STATION LOCATION

MEDFORD, OREGON

LOCATION	OCCUPIED FROM	OCCUPIED TO	AIRLINE DISTANCES AND DIRECTIONS FROM PREVIOUS LOCATION	LATITUDE NORTH	LONGITUDE WEST	ELEVATION ABOVE											* Type	REMARKS	
						SEA LEVEL	GROUND												AUTOMATED
							WIND	WIND	WIND	WIND	WIND	WIND	WIND	WIND	WIND	WIND			
<u>COOPERATIVE</u>																			
Garnett-Corey Bldg. ** Main and Grape Streets	3/11/11	7/15/27		42°20'	122°51'	1379	80	5	4								** - Later names: Liberty Bldg. and Leverette Bldg.		
<u>CITY</u>																			
Barber Field (Fair Grounds)	12/22/26	6/23/27	1.6 mi. SE			1407													
Garnett-Corey Bldg. ** Main and Grape Streets	6/24/27	10/31/29	1.6 mi. NW	42°20'	122°51'	1379	80	5	4								Cooperative station took temperature and precipitation observations through 7/15/27. WBO assumed all cooperative station activities on 7/16/27.		
<u>AIRPORT</u>																			
Medford Municipal AP Hangar Lean-to	11/01/29	5/19/53	3 mi. N	42°22'	122°52'	1314	a61	30	29				b36	26			a - 58 feet to 3/4/48. b - Added 11/28/40 at 26 feet and relocated 4/7/49.		
Municipal Airport ## Union Terminal Building	5/20/53	1/21/69	500 ft. WNW	42°22'	122°52'	e1298	c20	f5	f5				5	3	d4		Exposure of all instruments much improved. c - 62 feet until moved to field 5/6/59. d - Commissioned 2250 feet NNW of office 3/1/61. e - 1312 feet to 3/1/61. f - Standby status after 3/1/61.		
## Medford-Jackson County Airport effective 11/05/68																			
Weather Service Bldg. Medford-Jackson County Airport	1/21/69	8/15/84	200 ft. W	42°22'	122°52'	1298	g20	5	5	NA	NA	5	4	g4	NA		g - Same site as prior to 1/21/69.		
Weather Service Bldg. Medford-Jackson County Airport	8/15/84	01/01/98	0.4 mi. NNW	42°23'	122°52'	1298	h20	5	5	NA	NA	5	4	h4 i4	NA		Instrument Relocation. h - Not moved 8/15/84. i - Moved & type change 11/29/84.		
Rogue Valley Int'l AP	01/01/98	Present	NA	42°23'	122°52'	1331									S		ASOS Commissioned 01/01/98		

SUBSCRIPTION: Price and ordering information available through: National Climatic Data Center, Federal Building, Asheville, North Carolina 28801.  
INQUIRIES/COMMENTS CALL: (828) 271-4800

National Climatic Data Center  
151 Patton Avenue, Rm 120  
Asheville NC 28801-5001

OFFICIAL BUSINESS  
PENALTY FOR PRIVATE USE \$300  
FORWARD AND ADDRESS CORRECTION

FIRST CLASS  
POSTAGE & FEES PAID  
United States Department of Commerce  
NOAA Permit No. G - 19