

1999

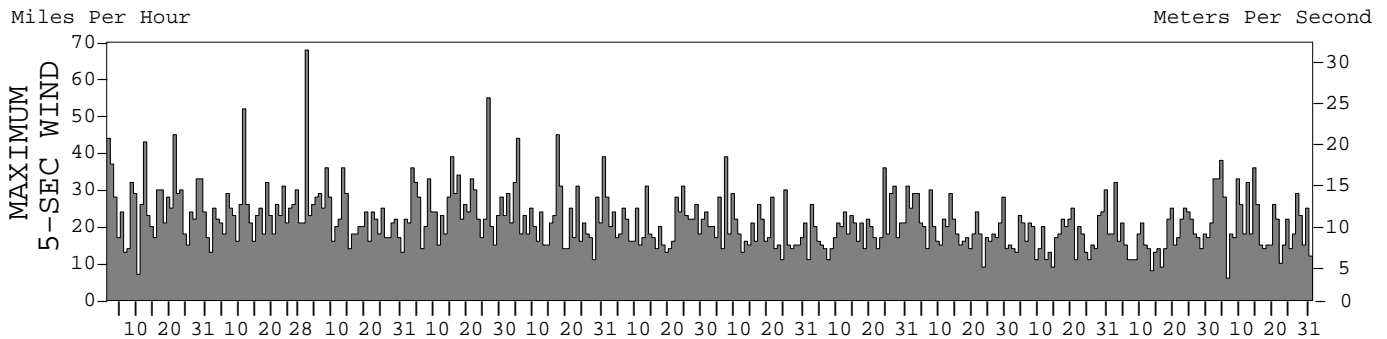
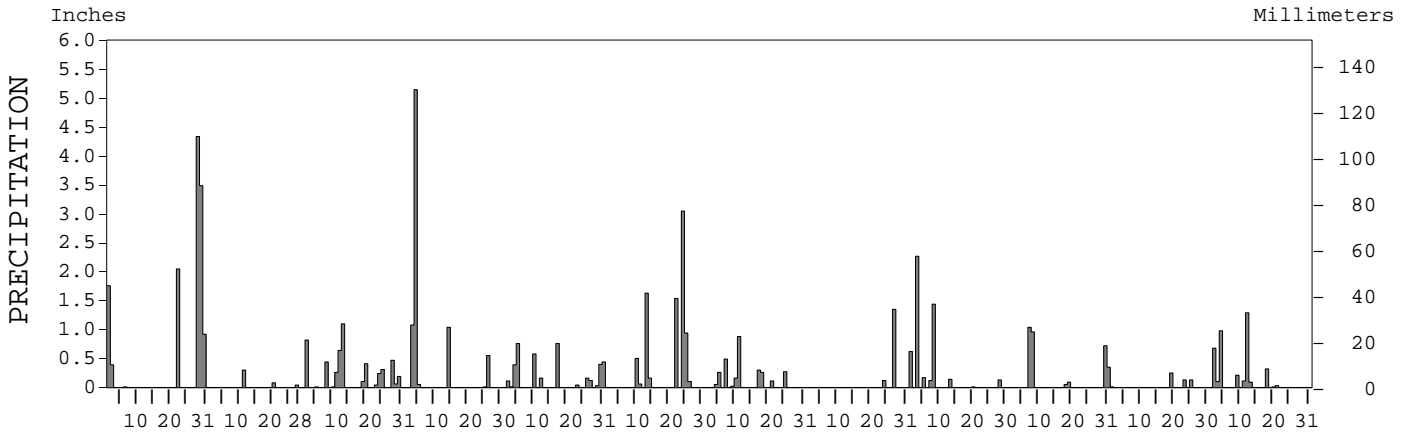
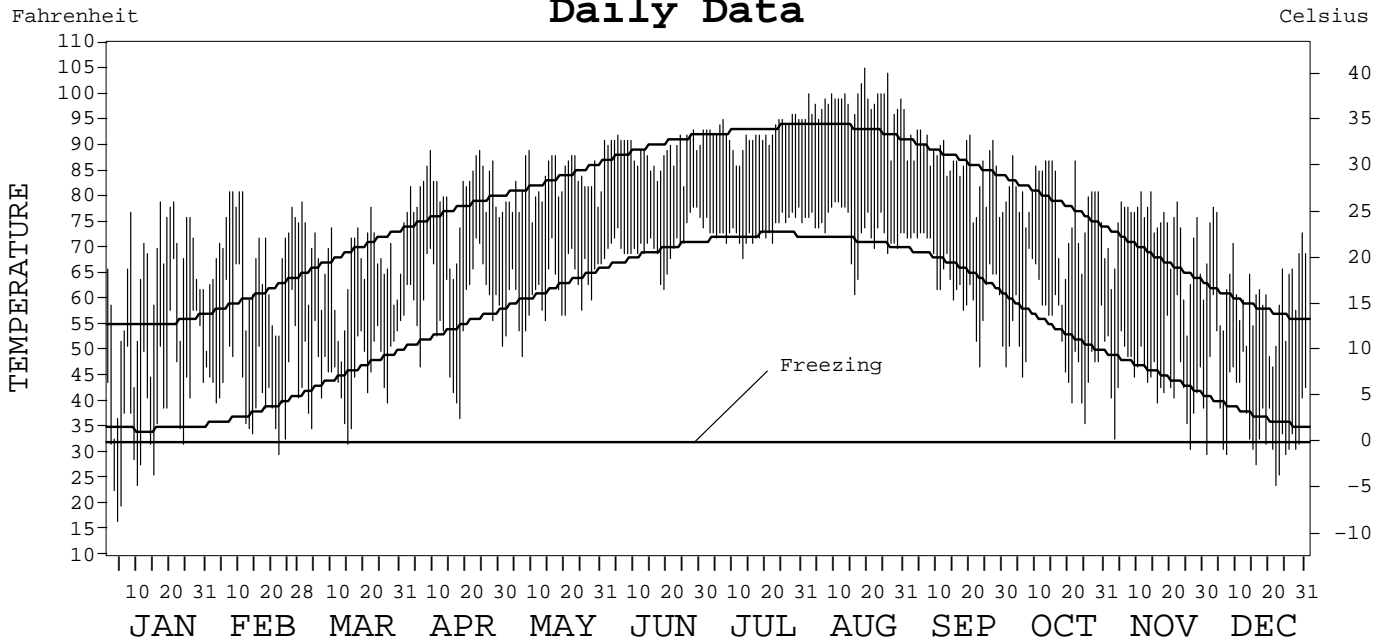
LOCAL CLIMATOLOGICAL DATA ANNUAL SUMMARY WITH COMPARATIVE DATA



ISSN 0198-2338

SHREVEPORT, LOUISIANA (SHV)

Daily Data



I CERTIFY THAT THIS IS AN OFFICIAL PUBLICATION OF THE NATIONAL OCEANIC AND ATMOSPHERIC ADMINISTRATION, AND IS COMPILED FROM RECORDS ON FILE AT THE NATIONAL CLIMATIC DATA CENTER.

NATIONAL OCEANIC AND ATMOSPHERIC ADMINISTRATION
 NATIONAL ENVIRONMENTAL AND INFORMATION SERVICE
 NATIONAL ENVIRONMENTAL AND INFORMATION SERVICE
 NATIONAL CLIMATIC DATA CENTER
 NATIONAL CLIMATIC DATA CENTER
 DIRECTOR NATIONAL CLIMATIC DATA CENTER
 ASHEVILLE, NORTH CAROLINA

METEOROLOGICAL DATA FOR 1999

SHREVEPORT, LA (SHV)

LATITUDE: 32° 26' 49" N LONGITUDE: 93° 49' 27" W ELEVATION (FT): GRND: 265 BARO: 265 TIME ZONE: CENTRAL (UTC + 6) WBAN: 13957

	ELEMENT	JAN	FEB	MAR	APR	MAY	JUN	JUL	AUG	SEP	OCT	NOV	DEC	YEAR	
TEMPERATURE °F	MEAN DAILY MAXIMUM	62.9	68.9	66.5	80.1	82.6	89.0	92.3	98.2	86.4	78.1	72.5	61.9	78.3	
	HIGHEST DAILY MAXIMUM	79	81	79	89	89	93	96	105	93	88	81	78	105	
	DATE OF OCCURRENCE	21+	11+	01	24+	09	28	29+	19	5 +	03	14+	03	AUG 19	
	MEAN DAILY MINIMUM	40.2	45.0	46.2	58.6	61.4	70.6	73.4	73.5	64.1	52.8	45.0	37.3	55.7	
	LOWEST DAILY MINIMUM	17	30	32	37	49	62	68	61	47	36	31	24	17	
	DATE OF OCCURRENCE	04	22	15	18	07	19	13	16	23	25	26	22	JAN 04	
	AVERAGE DRY BULB	51.6	57.0	56.4	69.4	72.0	79.8	82.9	85.9	75.3	65.5	58.8	49.6	67.0	
	MEAN WET BULB		50.7	51.2	62.4	66.2	72.9	75.5	73.3	66.3		52.2	44.5		
	MEAN DEW POINT		43.7	46.2	57.4	62.6	69.8	72.8	67.1	60.9		46.1	38.2		
	NUMBER OF DAYS WITH:														
	MAXIMUM ≥ 90°	0	0	0	0	0	16	27	30	10	0	0	0	0	83
	MAXIMUM ≤ 32°	0	0	0	0	0	0	0	0	0	0	0	0	0	0
	MINIMUM ≤ 32°	10	1	1	0	0	0	0	0	0	0	1	13	26	
MINIMUM ≤ 0°	0	0	0	0	0	0	0	0	0	0	0	0	0		
H/C	HEATING DEGREE DAYS	422	250	261	41	1	0	0	0	2	79	189	477	1722	
	COOLING DEGREE DAYS	12	29	0	180	224	451	562	655	317	101	9	6	2546	
RH	MEAN (PERCENT)	75	66	73	70	74	75	76	57	66	69	68	69	70	
	HOUR 00 LST	80	73	80	78	86	85	87	67	76	80	78	76	79	
	HOUR 06 LST	86	86	85	88	90	90	94	80	85	89	86	85	87	
	HOUR 12 LST	63	50	61	56	59	62	58	42	51	51	48	53	54	
	HOUR 18 LST	65	52	63	56	63	63	62	39	55	59	59	61	58	
S	PERCENT POSSIBLE SUNSHINE	78	87				93	96		93	90	95	88		
W/O	NUMBER OF DAYS WITH:														
	HEAVY FOG (VISBY ≤ 1/4 MI)	3	1	0	2	1	0	1	0	1	0	2	5	16	
	THUNDERSTORMS	6	2	9	4	11	7	12	4	6	1	4	67		
CLOUDINESS	SUNRISE-SUNSET: (OKTAS)														
	CEILOMETER (≤ 12,000 FT.)														
	SATELLITE (> 12,000 FT.)														
	MIDNIGHT-MIDNIGHT: (OKTAS)														
	CEILOMETER (≤ 12,000 FT.)														
	SATELLITE (> 12,000 FT.)														
NUMBER OF DAYS WITH:															
CLEAR															
PARTLY CLOUDY															
CLOUDY															
PR	MEAN STATION PRESS. (IN.)		29.82	29.76	29.67	29.67	29.69	29.76	29.66	29.70	29.81	29.90	29.85		
	MEAN SEA-LEVEL PRESS. (IN.)		30.09	30.04	29.94	29.94	29.96	30.02	29.93	29.97	30.08	30.18	30.14		
WINDS	RESULTANT SPEED (MPH)		2.5	1.9	2.8	0.7	3.0	1.2	1.7	2.0	1.0	0.7	1.2		
	RES. DIR. (TENS OF DEGS.)		20	07	19	13	16	20	03	05	03	14	23		
	MEAN SPEED (MPH)	8.8	8.6	8.5	9.2	6.6	6.8	5.5	5.6	5.7	5.2	5.5	7.7	7.0	
	PREVAIL. DIR. (TENS OF DEGS.)	17	17	06	17	18	18	18	07	01	36	16	14	17	
	MAXIMUM 2-MINUTE WIND:														
	SPEED (MPH)	38	41	54	45	33	25	29	25	24	25	25	30	54	
	DIR. (TENS OF DEGS.)	28	27	29	26	22	01	13	13	03	29	01	29	29	
	DATE OF OCCURRENCE	01	11	02	26	05	13	07	31	07	30	02	14+	MAR 02	
	MAXIMUM 5-SECOND WIND:														
	SPEED (MPH)	45	52	68	55	45	31	39	36	30	30	32	38	68	
DIR. (TENS OF DEGS.)	19	28	31	26	32	01	13	36	36	30	31	17	31		
DATE OF OCCURRENCE	21	11	02	26	17	24+	07	24	07	30	02	04	MAR 02		
PRECIPITATION	WATER EQUIVALENT:														
	TOTAL (IN.)	12.96	0.42	5.10	7.88	3.96	7.98	2.80	1.47	4.90	3.21	0.52	3.82	55.02	
	GREATEST 24-HOUR (IN.)	7.00	0.30	1.10	5.15	0.76	3.59	0.98	1.35	2.27	1.04	0.25	1.37	7.00	
	DATE OF OCCURRENCE	28-29	11	13	04	17+	24-25	10-11	27	03	07	19	11-12	JAN 28-29	
	NUMBER OF DAYS WITH:														
	PRECIPITATION ≥ 0.01	7	3	15	6	13	8	10	2	8	6	4	10	92	
PRECIPITATION ≥ 0.10	6	1	11	4	10	7	8	2	7	4	3	7	70		
PRECIPITATION ≥ 1.00	4	0	1	3	0	3	0	1	2	1	0	1	16		
SNOWFALL	SNOW, ICE PELLETS, HAIL:														
	TOTAL (IN.)	0.0	0.0	T	0.0	0.0	0.0	0.0	0.0	0.0	0.0	0.0	T	T	
	GREATEST 24-HOUR (IN.)	0.0	0.0	T	0.0	0.0	0.0	0.0	0.0	0.0	0.0	0.0	T	T	
	DATE OF OCCURRENCE			02									21	DEC 21	
	MAXIMUM SNOW DEPTH (IN.)	0	0	0	0	0	0	0	0	0	0	0	0	0	
	NUMBER OF DAYS WITH:														
SNOWFALL ≥ 1.0	0	0	0	0	0	0	0	0	0	0	0	0	0		

NORMALS, MEANS, AND EXTREMES

SHREVEPORT, LA (SHV)

LATITUDE: 32° 26' 49" N LONGITUDE: 93° 49' 27" W ELEVATION (FT): GRND: 265 BARO: 265 TIME ZONE: CENTRAL (UTC + 6) WBAN: 13957

	ELEMENT	POR	JAN	FEB	MAR	APR	MAY	JUN	JUL	AUG	SEP	OCT	NOV	DEC	YEAR
TEMPERATURE °F	NORMAL DAILY MAXIMUM	30	55.4	60.6	69.2	77.1	83.2	89.7	93.0	93.1	87.3	78.7	68.0	58.5	76.2
	MEAN DAILY MAXIMUM	52	56.2	61.2	68.6	76.8	83.5	90.1	93.3	93.3	87.6	78.6	67.1	59.0	76.3
	HIGHEST DAILY MAXIMUM	47	84	89	92	94	102	102	107	108	105	97	88	84	108
	YEAR OF OCCURRENCE		1972	1986	1974	1987	1998	1998	1998	1998	1995	1954	1984	1955	AUG 1998
	MEAN OF EXTREME MAXS.	52	76.6	79.6	84.2	87.2	91.8	95.9	98.9	99.9	96.4	90.8	82.8	77.0	88.4
	NORMAL DAILY MINIMUM	30	34.8	38.0	45.8	54.1	62.0	69.0	72.3	71.3	66.0	54.3	45.3	37.3	54.2
	MEAN DAILY MINIMUM	52	36.3	39.6	45.9	54.1	62.7	69.6	72.7	71.6	66.0	54.7	44.7	38.4	54.7
	LOWEST DAILY MINIMUM	47	3	12	20	31	42	52	58	53	42	28	16	5	3
	YEAR OF OCCURRENCE		1962	1978	1980	1989	1960	1977	1972	1992	1984	1993	1976	1989	JAN 1962
	MEAN OF EXTREME MINS.	52	18.8	23.2	28.6	38.2	49.4	59.7	66.5	64.0	52.0	38.5	28.2	21.3	40.7
	NORMAL DRY BULB	30	45.1	49.3	57.5	65.6	72.6	79.4	82.7	82.2	76.7	66.5	56.7	48.0	65.2
	MEAN DRY BULB	52	46.3	50.3	57.3	65.5	73.1	79.9	83.0	82.5	76.8	66.6	55.9	48.6	65.5
	MEAN WET BULB	15	41.9	46.3	51.5	58.4	66.8	72.6	74.9	74.1	68.9	60.2	51.5	44.9	59.3
	MEAN DEW POINT	15	36.2	40.0	45.2	53.0	63.2	69.3	71.8	70.4	64.9	56.1	46.9	39.9	54.7
	NORMAL NO. DAYS WITH:														
MAXIMUM ≥ 90°	30	0.0	0.0	*	0.3	3.7	17.2	25.0	25.0	13.3	2.5	0.0	0.0	87.0	
MAXIMUM ≤ 32°	30	1.3	0.4	*	0.0	0.0	0.0	0.0	0.0	0.0	0.0	0.0	0.6	2.3	
MINIMUM ≤ 32°	30	14.1	8.3	2.5	0.2	0.0	0.0	0.0	0.0	0.0	0.2	2.7	10.8	38.8	
MINIMUM ≤ 0°	30	0.0	0.0	0.0	0.0	0.0	0.0	0.0	0.0	0.0	0.0	0.0	0.0	0.0	
H/C	NORMAL HEATING DEG. DAYS	30	623	448	262	69	0	0	0	0	0	63	264	535	2264
	NORMAL COOLING DEG. DAYS	30	6	8	30	87	239	432	549	533	351	110	15	8	2368
RH	NORMAL (PERCENT)	30	73	70	68	70	73	73	72	72	74	72	74	74	72
	HOUR 00 LST	30	78	76	76	79	84	84	83	83	84	82	82	81	81
	HOUR 06 LST	30	84	84	84	87	90	91	90	91	91	89	87	86	88
	HOUR 12 LST	30	63	60	56	56	59	59	58	56	58	54	59	63	58
	HOUR 18 LST	30	65	58	54	56	60	60	58	58	62	62	68	68	61
S	PERCENT POSSIBLE SUNSHINE	46	51	56	58	60	64	72	75	74	70	70	60	54	64
W/O	MEAN NO. DAYS WITH:														
	HEAVY FOG (VISBY ≤ 1/4 MI)	47	3.3	2.2	1.4	1.2	1.0	0.5	0.3	0.4	0.9	2.2	2.8	3.1	19.3
	THUNDERSTORMS	47	2.2	2.9	5.1	5.6	7.2	7.5	8.2	6.4	4.2	3.0	3.1	2.2	57.6
CLOUDINESS	MEAN:														
	SUNRISE-SUNSET (OKTAS)	1			2.4			1.6							
	MIDNIGHT-MIDNIGHT (OKTAS)	1			2.4										
	MEAN NO. DAYS WITH:														
	CLEAR	1	6.0	5.0	10.0		6.0	7.0							
PARTLY CLOUDY	1		2.0	3.0		7.0	8.0								
CLOUDY	1	3.0	2.0	7.0		3.0	4.0								
PR	MEAN STATION PRESSURE (IN)	26	29.86	29.82	29.73	29.70	29.67	29.69	29.73	29.73	29.74	29.79	29.82	29.86	29.76
	MEAN SEA-LEVEL PRES. (IN)	15	30.15	30.09	30.03	29.96	29.94	29.95	30.01	29.99	30.01	30.06	30.11	30.14	30.04
WINDS	MEAN SPEED (MPH)	40	9.3	9.6	10.1	9.8	8.6	7.7	7.1	6.7	7.2	7.3	8.6	9.1	8.4
	PREVAIL. DIR (TENS OF DEGS)	25	18	18	18	18	18	18	18	18	12	14	18	13	18
	MAXIMUM 2-MINUTE:														
	SPEED (MPH)	4	38	43	54	45	33	41	41	40	32	36	40	31	54
	DIR. (TENS OF DEGS)		28	30	29	26	22	29	15	11	32	20	29	30	29
	YEAR OF OCCURRENCE		1999	1998	1999	1999	1999	1998	1998	1998	1996	1996	1998	1998	MAR 1999
	MAXIMUM 5-SECOND:														
SPEED (MPH)	4	45	52	68	55	45	55	67	59	41	46	51	38	68	
DIR. (TENS OF DEGS)		19	28	31	26	32	31	18	34	33	20	29	17	31	
YEAR OF OCCURRENCE		1999	1999	1999	1999	1999	1998	1998	1997	1996	1996	1996	1999	MAR 1999	
PRECIPITATION	NORMAL (IN)	30	3.88	3.92	3.59	3.75	5.18	4.29	3.67	2.43	3.12	3.73	4.45	4.10	46.11
	MAXIMUM MONTHLY (IN)	47	12.96	8.57	8.72	21.84	11.78	17.11	9.46	9.23	9.59	12.05	10.81	10.00	21.84
	YEAR OF OCCURRENCE		1999	1983	1997	1991	1967	1989	1972	1991	1968	1984	1987	1982	APR 1991
	MINIMUM MONTHLY (IN)	47	0.27	0.42	0.56	0.43	0.15	0.13	0.15	0.35	0.08	0.00	0.52	0.59	0.00
	YEAR OF OCCURRENCE		1971	1999	1966	1987	1998	1988	1964	1985	1994	1963	1999	1981	OCT 1963
	MAXIMUM IN 24 HOURS (IN)	47	7.00	3.53	3.63	10.44	5.27	7.28	4.40	4.64	5.39	3.88	6.51	3.35	10.44
	YEAR OF OCCURRENCE		1999	1965	1979	1991	1978	1993	1995	1955	1961	1957	1987	1965	APR 1991
	NORMAL NO. DAYS WITH:														
PRECIPITATION ≥ 0.01	30	9.4	8.1	9.3	8.2	9.0	7.9	7.9	6.6	7.0	6.6	8.1	9.5	97.6	
PRECIPITATION ≥ 1.00	30	1.2	1.2	1.1	1.2	1.8	1.3	1.2	1.0	1.0	1.2	1.4	1.1	14.7	
SNOWFALL	NORMAL (IN)	30	1.0	0.6	0.2	0.*	0.0	0.0	0.0	0.0	0.0	0.0	0.*	0.3	2.1
	MAXIMUM MONTHLY (IN)	47	5.9	4.4	4.0	0.3	T	0.0	0.0	T	0.0	T	1.3	5.4	5.9
	YEAR OF OCCURRENCE		1978	1985	1965	1987	1994			1997		1992	1980	1983	JAN 1978
	MAXIMUM IN 24 HOURS (IN)	47	5.6	4.4	4.0	0.3	T	0.0	0.0	T	0.0	T	1.3	5.4	5.6
	YEAR OF OCCURRENCE		1982	1985	1965	1987	1994			1997		1992	1980	1983	JAN 1982
	MAXIMUM SNOW DEPTH (IN)	51	9	4	2	0	0	0	0	0	0	0	1	3	9
	YEAR OF OCCURRENCE		1948	1951	1965								1980	1963	JAN 1948
NORMAL NO. DAYS WITH:															
SNOWFALL ≥ 1.0	30	0.3	0.2	0.1	0.0	0.0	0.0	0.0	0.0	0.0	0.0	0.*	0.1	0.7	

PRECIPITATION (inches) 1999 SHREVEPORT, LA (SHV)

YEAR	JAN	FEB	MAR	APR	MAY	JUN	JUL	AUG	SEP	OCT	NOV	DEC	ANNUAL
1970	1.23	4.70	4.30	5.12	4.36	1.14	3.94	2.04	1.64	7.44	2.09	3.80	41.80
1971	0.27	4.13	2.11	1.06	5.26	0.97	6.15	2.99	1.30	3.86	3.75	3.65	35.50
1972	5.97	0.94	2.45	2.06	4.13	2.76	9.46	1.27	2.10	6.32	5.32	4.18	46.96
1973	5.65	1.52	5.01	6.44	2.00	5.84	7.63	0.77	6.39	5.38	5.16	6.37	58.16
1974	10.09	3.67	3.60	3.09	4.58	6.29	7.73	3.84	6.64	3.79	5.80	2.34	61.46
1975	4.55	4.51	5.84	3.91	5.31	3.48	3.45	1.65	0.98	3.87	4.44	1.88	43.87
1976	2.07	2.45	6.67	1.75	5.95	4.42	3.47	2.96	6.28	2.08	1.63	3.77	43.50
1977	3.00	3.68	4.94	2.05	2.40	2.41	3.89	4.28	0.53	0.31	2.11	2.58	32.18
1978	4.89	1.90	2.66	2.79	7.92	1.21	1.74	3.90	2.40	2.74	4.18	5.13	41.46
1979	9.22	4.98	5.74	7.42	7.99	3.04	7.50	1.86	4.33	3.96	4.76	3.12	63.92
1980	4.67	3.10	3.75	5.34	4.42	2.60	1.83	0.42	1.63	2.48	3.59	0.74	34.57
1981	1.43	3.83	3.33	1.97	9.96	6.45	2.36	0.94	3.32	5.63	1.49	0.59	41.30
1982	3.59	3.19	2.59	2.72	2.32	1.84	4.25	2.20	1.11	5.19	5.72	10.00	44.72
1983	2.45	8.57	3.68	1.47	8.22	6.60	1.18	1.67	3.12	0.79	4.90	7.18	49.83
1984	2.10	5.66	3.58	2.52	5.86	3.56	2.20	0.87	2.61	12.05	4.46	2.88	48.35
1985	2.38	4.42	4.28	3.05	1.96	4.57	8.40	0.35	4.40	9.87	4.25	3.37	51.30
1986	0.49	3.48	0.75	3.50	6.60	14.67	2.92	1.68	3.51	6.63	9.19	4.69	58.11
1987	2.26	7.80	1.48	0.43	6.67	5.43	1.21	3.50	0.94	5.49	10.81	8.12	54.14
1988	2.06	3.59	3.89	3.45	0.42	0.13	3.12	3.52	1.61	4.44	5.44	4.71	36.38
1989	7.20	4.06	3.41	2.41	10.07	17.11	4.46	3.94	1.08	1.50	2.32	3.34	60.90
1990	10.02	6.92	4.90	4.29	10.48	2.56	3.53	2.88	2.93	4.33	8.81	3.99	65.64
1991	7.70	5.13	2.89	21.84	10.71	2.53	3.47	9.23	3.45	3.59	3.94	7.51	81.99
1992	4.63	6.41	5.94	3.26	2.81	3.95	3.36	1.24	5.15	4.13	4.69	5.84	51.41
1993	4.63	4.80	5.94	4.19	3.30	15.73	0.27	4.09	3.51	4.43	4.85	1.44	57.18
1994	3.63	5.02	3.67	3.67	5.85	2.81	6.43	3.80	0.08	9.14	2.50	8.00	54.60
1995	5.44	3.75	4.05	7.80	3.26	1.09	5.68	0.83	3.36	1.65	1.94	5.11	43.96
1996	2.12	0.64	2.33	3.86	0.93	6.50	5.70	5.78	7.17	1.66	5.87	2.24	44.80
1997	4.47	8.09	8.72	11.93	3.19	6.14	1.73	5.48	2.41	7.50	3.44	6.10	69.20
1998	5.84	7.19	4.28	0.79	0.15	1.35	2.84	3.83	7.79	5.72	4.58	6.24	50.60
1999	12.96	0.42	5.10	7.88	3.96	7.98	2.80	1.47	4.90	3.21	0.52	3.82	55.02
POR= 129 YRS	4.23	3.75	4.18	4.70	4.57	3.64	3.49	2.65	2.89	3.24	3.90	4.49	45.73

WBAN : 13957

AVERAGE TEMPERATURE (°F) 1999 SHREVEPORT, LA (SHV)

YEAR	JAN	FEB	MAR	APR	MAY	JUN	JUL	AUG	SEP	OCT	NOV	DEC	ANNUAL
1970	42.0	49.4	53.8	67.4	72.7	78.8	81.7	84.3	81.1	65.1	54.7	54.3	65.4
1971	50.6	50.6	55.4	64.3	70.8	81.7	83.3	80.6	78.1	70.7	56.4	55.4	66.5
1972	49.4	51.9	59.8	66.9	72.3	80.8	81.0	82.6	80.2	67.2	50.9	45.5	65.7
1973	44.7	49.5	60.9	62.0	71.7	78.5	81.1	78.2	74.9	68.2	61.5	46.8	64.8
1974	47.8	51.2	63.6	64.3	74.0	76.6	82.1	80.1	71.0	66.2	55.6	47.3	65.0
1975	50.2	48.4	55.6	63.7	72.4	78.2	80.9	80.7	73.7	68.0	56.3	49.3	64.8
1976	47.1	59.2	60.2	67.3	67.9	75.7	78.6	78.7	74.3	59.9	49.3	46.3	63.7
1977	37.3	50.8	59.6	65.5	74.1	79.5	83.5	80.3	78.7	66.3	56.5	47.3	65.0
1978	34.9	38.1	52.8	65.5	73.6	80.5	85.4	83.3	77.8	66.0	60.0	48.0	63.8
1979	37.4	46.6	59.1	66.0	70.2	78.0	81.2	80.3	74.2	67.0	52.8	48.9	63.5
1980	48.3	47.9	54.9	63.0	74.3	83.4	86.9	85.5	82.1	63.5	54.2	49.1	66.1
1981	44.7	49.8	56.0	70.0	69.2	80.2	82.8	81.3	73.9	65.0	56.8	46.9	64.7
1982	46.1	45.6	61.5	63.3	74.4	78.6	83.3	83.2	75.6	64.6	55.4	51.2	65.2
1983	44.6	48.8	55.0	59.7	70.0	77.4	82.3	84.0	75.7	66.7	55.9	37.5	63.1
1984	40.6	50.4	58.0	64.9	72.1	79.3	81.1	82.1	75.0	70.6	56.4	60.0	65.9
1985	40.0	46.2	61.4	67.0	72.8	79.3	83.1	84.8	76.3	68.5	61.5	44.2	65.4
1986	49.0	54.4	59.7	66.5	72.3	79.9	83.7	80.8	79.4	65.2	55.6	46.1	66.1
1987	44.8	51.7	55.7	64.2	75.3	79.1	82.3	85.3	76.7	64.1	56.1	50.2	65.5
1988	42.2	49.3	56.3	65.2	71.8	79.8	83.3	83.7	77.8	64.1	58.6	49.2	65.1
1989	51.5	45.8	56.7	65.6	73.8	76.7	81.2	81.0	73.7	66.5	58.6	40.8	64.3
1990	52.5	56.4	59.4	65.6	72.6	82.7	82.2	83.3	79.7	65.0	58.9	48.5	67.2
1991	44.2	52.0	60.0	68.6	75.3	80.6	82.6	81.2	75.7	68.7	52.1	51.2	66.0
1992	47.2	54.7	59.5	65.1	71.4	78.5	82.9	78.6	76.0	67.0	52.0	49.5	65.2
1993	46.4	49.3	55.2	61.3	70.7	80.2	84.6	84.8	77.3	64.4	52.0	49.1	64.6
1994	46.4	51.2	58.0	66.7	70.9	81.4	82.1	81.1	76.3	67.0	60.0	51.1	66.0
1995	48.1	53.1	59.4	64.6	73.9	79.0	84.2	86.6	77.3	66.2	55.0	49.1	66.4
1996	46.2	52.4	53.4	63.8	77.0	78.3	82.3	80.0	74.1	66.0	55.7	51.5	65.1
1997	45.6	51.2	61.4	60.3	70.3	78.1	83.6	81.0	78.2	66.8	51.9	46.0	64.5
1998	51.7	51.6	56.1	63.5	77.3	84.9	88.5	84.6	81.7	68.5	58.0	49.3	68.0
1999	51.6	57.0	56.4	69.4	72.0	79.8	82.9	85.9	75.3	65.5	58.8	49.6	67.0
POR= 125 YRS	47.0	50.6	57.9	65.9	73.2	80.3	83.0	82.6	77.1	67.0	56.1	49.0	65.8

HEATING DEGREE DAYS (base 65°F) 1999 SHREVEPORT, LA (SHV)

YEAR	JUL	AUG	SEP	OCT	NOV	DEC	JAN	FEB	MAR	APR	MAY	JUN	TOTAL
1970-71	0	0	0	97	324	351	459	398	316	94	15	0	2054
1971-72	0	0	4	7	282	304	499	382	185	62	0	0	1725
1972-73	0	0	6	92	419	597	621	429	135	145	9	0	2453
1973-74	0	0	0	40	164	557	533	386	152	78	2	0	1912
1974-75	0	0	14	32	312	541	473	457	305	124	0	0	2258
1975-76	0	0	4	39	286	492	551	186	202	38	17	0	1815
1976-77	0	0	0	199	471	574	851	399	188	46	0	0	2728
1977-78	0	0	0	72	260	549	933	746	374	61	30	0	3025
1978-79	0	0	0	57	181	528	849	517	216	50	11	0	2409
1979-80	0	0	0	52	366	498	508	494	312	96	4	0	2330
1980-81	0	0	3	128	340	488	620	425	279	14	20	0	2317
1981-82	0	0	8	129	246	554	588	537	202	125	4	0	2393
1982-83	0	0	9	120	309	457	624	449	308	186	12	0	2474
1983-84	0	0	15	69	305	848	747	421	247	81	11	0	2744
1984-85	0	0	19	36	286	208	770	528	151	42	1	0	2041
1985-86	0	0	11	49	174	638	490	331	176	44	1	0	1914
1986-87	0	0	0	86	299	579	618	366	286	117	0	0	2351
1987-88	0	0	0	79	279	456	701	453	278	54	1	0	2301
1988-89	0	0	0	76	218	482	418	535	295	93	2	0	2119
1989-90	0	0	17	85	244	743	382	243	216	92	3	0	2025
1990-91	0	0	6	126	208	509	634	357	197	26	6	0	2069
1991-92	0	0	9	36	401	422	544	297	185	84	23	0	2001
1992-93	0	0	2	33	381	480	569	435	307	154	3	0	2364
1993-94	0	0	5	132	404	490	577	392	239	81	20	0	2340
1994-95	0	0	5	74	179	440	528	334	224	80	10	0	1874
1995-96	0	0	10	56	311	507	576	387	372	115	2	0	2336
1996-97	0	0	10	59	277	427	604	383	133	157	5	0	2055
1997-98	0	0	0	95	392	580	406	368	324	88	0	0	2253
1998-99	0	0	0	37	215	501	422	250	261	41	1	0	1728
1999-	0	0	2	79	189	477							

WBAN : 13957

COOLING DEGREE DAYS (base 65°F) 1999 SHREVEPORT, LA (SHV)

YEAR	JAN	FEB	MAR	APR	MAY	JUN	JUL	AUG	SEP	OCT	NOV	DEC	ANNUAL
1970	9	0	5	138	259	420	528	606	492	106	23	28	2614
1971	22	1	24	82	203	510	576	488	403	191	28	9	2537
1972	22	10	31	128	235	480	501	553	467	167	1	0	2595
1973	0	2	16	64	223	412	504	417	305	145	66	0	2154
1974	7	6	115	63	288	355	541	477	200	77	35	0	2164
1975	23	0	21	91	238	403	501	493	271	141	34	12	2228
1976	2	26	58	116	112	326	428	432	288	48	7	0	1843
1977	0	7	28	69	289	443	580	479	419	119	12	9	2454
1978	5	0	3	84	303	472	637	570	391	96	39	8	2608
1979	0	8	39	86	178	395	509	483	284	124	8	2	2116
1980	1	6	6	43	298	560	686	643	522	86	22	1	2874
1981	0	5	10	171	157	463	558	511	284	135	6	0	2300
1982	14	0	99	81	300	413	573	573	333	115	24	32	2557
1983	0	0	7	34	176	381	540	595	343	126	39	0	2241
1984	0	5	38	83	235	436	511	540	329	219	35	61	2492
1985	0	8	49	109	252	436	568	620	356	163	78	0	2639
1986	2	41	17	95	236	454	586	494	438	101	24	0	2488
1987	1	0	7	99	327	431	544	634	357	57	19	5	2481
1988	3	3	14	67	220	449	575	587	390	53	37	1	2399
1989	8	7	43	121	283	358	508	503	286	140	57	0	2314
1990	2	9	50	115	244	538	536	572	453	132	30	3	2684
1991	0	1	47	141	334	475	550	509	336	158	20	5	2576
1992	0	4	21	93	227	412	561	428	339	99	1	4	2189
1993	0	0	10	50	189	461	614	620	381	121	20	4	2470
1994	3	12	29	141	209	500	538	506	355	145	36	13	2487
1995	11	6	58	72	290	427	600	676	385	100	16	19	2660
1996	3	31	23	85	384	403	543	471	291	96	6	16	2352
1997	9	4	29	25	180	398	583	504	399	157	6	0	2294
1998	1	0	56	50	392	602	737	613	508	152	15	22	3148
1999	12	29	0	180	224	451	562	655	317	101	9	6	2546

SNOWFALL (inches) 1999 SHREVEPORT, LA (SHV)

YEAR	JUL	AUG	SEP	OCT	NOV	DEC	JAN	FEB	MAR	APR	MAY	JUN	TOTAL
1970-71	0.0	0.0	0.0	0.0	0.0	0.0	0.8	0.6	0.3	0.0	0.0	0.0	1.7
1971-72	0.0	0.0	0.0	0.0	T	0.0	T	0.0	0.0	0.0	0.0	0.0	T
1972-73	0.0	0.0	0.0	0.0	0.0	0.0	0.6	T	0.0	0.0	0.0	0.0	0.6
1973-74	0.0	0.0	0.0	0.0	0.0	T	0.0	0.0	0.0	0.0	0.0	0.0	T
1974-75	0.0	0.0	0.0	0.0	0.0	0.0	3.4	T	T	0.0	0.0	0.0	3.4
1975-76	0.0	0.0	0.0	0.0	T	0.0	0.0	0.0	0.0	0.0	0.0	0.0	T
1976-77	0.0	0.0	0.0	0.0	T	0.0	5.4	0.0	0.0	0.0	0.0	0.0	5.4
1977-78	0.0	0.0	0.0	0.0	0.0	0.0	5.9	2.0	0.3	0.0	0.0	0.0	8.2
1978-79	0.0	0.0	0.0	0.0	0.0	0.0	T	1.5	0.0	0.0	0.0	0.0	1.5
1979-80	0.0	0.0	0.0	0.0	T	0.0	0.0	1.4	T	0.0	0.0	0.0	1.4
1980-81	0.0	0.0	0.0	0.0	1.3	0.0	0.7	0.1	0.0	0.0	0.0	0.0	2.1
1981-82	0.0	0.0	0.0	0.0	0.0	T	5.6	T	T	0.0	0.0	0.0	5.6
1982-83	0.0	0.0	0.0	0.0	0.0	T	T	T	0.0	0.0	0.0	0.0	T
1983-84	0.0	0.0	0.0	0.0	0.0	5.4	T	T	0.0	0.0	0.0	0.0	5.4
1984-85	0.0	0.0	0.0	0.0	0.0	0.0	0.4	4.4	0.0	0.0	0.0	0.0	4.8
1985-86	0.0	0.0	0.0	0.0	0.0	0.0	T	T	0.0	0.0	0.0	0.0	T
1986-87	0.0	0.0	0.0	0.0	0.0	T	0.0	T	T	0.3	0.0	0.0	0.3
1987-88	0.0	0.0	0.0	0.0	0.0	0.0	1.2	0.8	0.0	0.0	0.0	0.0	2.0
1988-89	0.0	0.0	0.0	0.0	0.0	0.0	T	T	T	0.0	T	0.0	T
1989-90	0.0	0.0	0.0	0.0	0.0	T	0.0	T	0.0	0.0	0.0	0.0	T
1990-91	0.0	0.0	0.0	0.0	0.0	T	0.0	T	0.0	T	T	0.0	T
1991-92	0.0	0.0	0.0	0.0	0.0	0.0	T	T	T	0.0	0.0	0.0	T
1992-93	0.0	0.0	0.0	T	T	0.0	T	T	1.0	T	0.0	0.0	1.0
1993-94	0.0	0.0	0.0	0.0	0.0	T	0.0	0.4	T	T	T	0.0	0.4
1994-95	0.0	0.0	0.0	0.0	T	0.0	T	T	0.0	T	0.0	0.0	T
1995-96	0.0	0.0	0.0	0.0	0.0	0.0	T	0.4			0.0	0.0	
1996-97	0.0	0.0	0.0	0.0	0.0	0.3	0.1	T	0.0	T	0.0	0.0	0.4
1997-98	0.0	T	0.0	0.0	T	0.0	T	T	T	0.0	0.0	0.0	T
1998-99	0.0	0.0	0.0	0.0	0.0	0.1	0.0	0.0	T	0.0	0.0	0.0	0.1
1999-	0.0	0.0	0.0	0.0	0.0	T							
POR= 46 YRS	0.0	0.0	0.0	T	0.0	0.2	0.7	0.4	0.2	0.0	T	0.0	1.5

WBAN : 13957

REFERENCE NOTES:

<p>PAGE 1: THE TEMPERATURE GRAPH SHOWS NORMAL MAXIMUM AND NORMAL MINIMUM DAILY TEMPERATURES (SOLID CURVES) AND THE ACTUAL DAILY HIGH AND LOW TEMPERATURES (VERTICAL BARS).</p> <p>PAGE 2 AND 3: H/C INDICATES HEATING AND COOLING DEGREE DAYS. RH INDICATES RELATIVE HUMIDITY W/O INDICATES WEATHER AND OBSTRUCTIONS S INDICATES SUNSHINE. PR INDICATES PRESSURE. CLOUDINESS ON PAGE 3 IS THE SUM OF THE CEILOMETER AND SATELLITE DATA NOT TO EXCEED EIGHT EIGHTHS(OKTAS).</p> <p>GENERAL: T INDICATES TRACE PRECIPITATION, AN AMOUNT GREATER THAN ZERO BUT LESS THAN THE LOWEST REPORTABLE VALUE. + INDICATES THE VALUE ALSO OCCURS ON EARLIER DATES. BLANK ENTRIES DENOTE MISSING OR UNREPORTED DATA. NORMALS ARE 30-YEAR AVERAGES (1961 - 1990). ASOS INDICATES AUTOMATED SURFACE OBSERVING SYSTEM. PM INDICATES THE LAST DAY OF THE PREVIOUS MONTH. POR (PERIOD OF RECORD) BEGINS WITH THE JANUARY DATA MONTH AND IS THE NUMBER OF YEARS USED TO COMPUTE THE MEAN. INDIVIDUAL MONTHS WITHIN THE POR MAY BE MISSING. WHEN THE POR FOR A NORMAL IS LESS THAN 30 YEARS, THE NORMAL IS PROVISIONAL AND IS BASED ON THE NUMBER OF YEARS INDICATED. 0.* OR * INDICATES THE VALUE OR MEAN-DAYS-WITH IS BETWEEN 0.00 AND 0.05. CLOUDINESS FOR ASOS STATIONS DIFFERS FROM THE NON-ASOS OBSERVATION TAKEN BY A HUMAN OBSERVER. ASOS STATION CLOUDINESS IS BASED ON TIME-AVERAGED CEILOMETER DATA FOR CLOUDS AT OR BELOW 12,000 FEET AND ON SATELLITE DATA FOR CLOUDS ABOVE 12,000 FEET. THE NUMBER OF DAYS WITH CLEAR, PARTLY CLOUDY, AND CLOUDY CONDITIONS FOR ASOS STATIONS IS THE SUM OF THE CEILOMETER AND SATELLITE DATA FOR THE SUNRISE TO SUNSET PERIOD.</p>	<p>GENERAL CONTINUED: CLEAR INDICATES 0 - 2 OKTAS, PARTLY CLOUDY INDICATES 3 - 6 OKTAS, AND CLOUDY INDICATES 7 OR 8 OKTAS. WHEN AT LEAST ONE OF THE ELEMENTS (CEILOMETER OR SATELLITE) IS MISSING, THE DAILY CLOUDINESS IS NOT COMPUTED. WIND DIRECTION IS RECORDED IN TENS OF DEGREES (2 DIGITS) CLOCKWISE FROM TRUE NORTH. "00" INDICATES CALM. "36" INDICATES TRUE NORTH. RESULTANT WIND IS THE VECTOR AVERAGE OF THE SPEED AND DIRECTION. AVERAGE TEMPERATURE IS THE SUM OF THE MEAN DAILY MAXIMUM AND MINIMUM TEMPERATURE DIVIDED BY 2. SNOWFALL DATA COMPRISE ALL FORMS OF FROZEN PRECIPITATION, INCLUDING HAIL. A HEATING (COOLING) DEGREE DAY IS THE DIFFERENCE BETWEEN THE AVERAGE DAILY TEMPERATURE AND 65° F. DRY BULB IS THE TEMPERATURE OF THE AMBIENT AIR. DEW POINT IS THE TEMPERATURE TO WHICH THE AIR MUST BE COOLED TO ACHIEVE 100 PERCENT RELATIVE HUMIDITY. WET BULB IS THE TEMPERATURE THE AIR WOULD HAVE IF THE MOISTURE CONTENT WAS INCREASED TO 100 PERCENT RELATIVE HUMIDITY.</p> <p>ON JULY 1, 1996, THE NATIONAL WEATHER SERVICE BEGAN USING THE "METAR" OBSERVATION CODE THAT WAS ALREADY EMPLOYED BY MOST OTHER NATIONS OF THE WORLD. THE MOST NOTICEABLE DIFFERENCE IN THIS ANNUAL PUBLICATION WILL BE THE CHANGE IN UNITS FROM TENTHS TO EIGHTHS(OKTAS) FOR REPORTING THE AMOUNT OF SKY COVER.</p>
---	---

1999 SHREVEPORT, LOUISIANA (SHV)

Shreveport is located on the west side of the Red River, opposite Bossier City, in the northwestern section of Louisiana, some 30 miles south of Arkansas and 15 miles east of Texas. A portion of the city is situated in the Red River bottom lands and the remainder in gently rolling hills that begin about 1 mile west of the river. The NOAA National Weather Service Office is at the Shreveport Regional Airport, about 8 miles southwest of the downtown area. Elevations in the Shreveport area range from about 170 to 280 feet above sea level.

The climate of Shreveport is transitional between the subtropical humid type prevalent to the south and the continental climates of the Great Plains and Middle West to the north. During winter, masses of moderate to severely cold air move periodically through the area. The spring and fall seasons are usually mild, while the summer months are consistently quite warm and humid with high pressure and a moist southerly flow being the dominant feature. Rainfall is abundant with the normal annual just over 46 inches, with monthly averages ranging less than 3 inches in August to more than 5 inches in May. The average growing season for northwest Louisiana ranges between 230 and 240 days in length.

The majority of rainfall is of convective and air mass types-showery and brief-except during winter when nearly continuous frontal rains may persist for a few days. Extremes of precipitation occur in all seasons. While torrential rainfall is the exception in the Shreveport area, some heavy rainfall events of notes are 12.44 inches in a 24-hour period on July 24-25, 1933, and 19.08 inches over a three-day period on July 23-25, 1933. The July 1933 total of 25.44 inches was the greatest monthly total. The greatest annual rainfall of record was in 1991 with 81.99 inches, and the driest year of record was 1899 with 23.10 inches. The months with the fewest days of rain are August and October, with August having the least average precipitation.

The winter months are normally mild with cold spells generally of short duration. The typical pattern is turning cold one day, reaching the lowest temperature on the second day, and a warming trend on the third day. The coldest reading on record is -5 degrees F on February 12, 1899. Temperatures of freezing or below occur each winter with an average of 39 days during the year. Temperatures drop below 15 degrees F only about one out of every two winters. The average date of the first 32 degrees F in the fall is November 15 and the average date of the last freeze in the spring is March 10. Freezing temperatures have been recorded as early as October 19 and as late as April 11. Temperatures recorded at the NWS Office on clear, calm nights are normally 2 to 5 degrees warmer than those in the low-lying river bottom lands of the area.

Measurable snowfall amounts occur on an average of only once every other year; many consecutive years may pass with no measurable snowfall. The heaviest snowstorm of record in the Shreveport area is 11.0 inches in December of 1929. This fell on the 21st and 22nd, and one-half inch remained on the ground December 25th, making this the only Christmas Day of record with snow on the ground. In 1948, 12.4 inches of snow was measured for the month of January for the greatest monthly amount on record. Occasional ice and sleet storms do considerable damage to trees, power and telephone lines, as well as make travel very difficult.

The summer months are consistently quite warm, with maximum temperatures exceeding 100 degrees about 6 days per year, exceeding 95 degrees about 32 days per year, and exceeding 90 degrees about 87 days per year. The highest temperature on record is 110 degrees F on August 18, 1909. Showers and thunderstorms at any one location in the area give about eight days in a month of measurable rainfall. The resulting point rainfall totals are usually less than one-half inch except on two or three days per month when heavier amounts are recorded.

Thunderstorms occur each month, but are most frequent in spring and summer months. The showers and thunderstorms during the spring and autumn months are most often produced by squall lines and fronts, and are generally heavier than the air mass showers which occur in the summer months. Severe local storms, including hailstorms, tornadoes, and local windstorms have occurred over small areas in all seasons, but are most frequent during the spring months, with a secondary peak from November to early January. Large hail of a damaging nature is infrequent, although hail as large as grapefruit fell in March 1961, and baseball size hail fell in May 1974 and April 1995.

The average relative humidity is rather high in all seasons. These high humidity values may be experienced at any hour but occur mainly during the early morning hours, with two-thirds of the hours shortly before sunrise having relative humidity of 90 percent or higher. In contrast, more than half of the mid-afternoon hours have had relative humidity values of less than 50 percent.

Tropical cyclones are in the dissipating stages by the time they reach this portion of the state and winds from them are usually not a destructive factor. Rainfall accompanying these systems can be heavy and can contribute to local flooding.

STATION LOCATION

SHREVEPORT, LOUISIANA

LOCATION	OCCUPIED FROM	OCCUPIED TO	AIRLINE DISTANCES AND DIRECTIONS FROM PREVIOUS LOCATION	LATITUDE NORTH	LONGITUDE WEST	ELEVATION ABOVE											* Type	REMARKS
						SEA LEVEL	GROUND											
							G	W	E	P	S	T	R	W	8	H		
CITY																		
Brooks House	9/02/71	10/03/71		32° 30'	93° 45'													
Southern Hotel	10/03/71	12/16/71		32° 30'	93° 45'													
National Hotel Milam Street	12/16/71	10/04/74		32° 30'	93° 45'	192	57	22										
Begel's Building Corner Texas & Marshall Streets	10/04/74	8/28/75		32° 30'	93° 45'				38	38			55					
Martin Building Corner Milam & Martin's Alley	8/28/75	12/01/80		32° 30'	93° 45'	187	47	24	24				35					
Rendall's Building 207 Milam Street	12/01/80	4/17/88	100 ft. E	32° 30'	93° 44'				33	33								
P.O. & Customs House Texas & Marshall Sts.	4/17/88	5/01/10	800 ft. SSE	32° 30'	93° 40'	196	84	77	77				74					
Majestic Theatre Bldg. Milam & McNeil Streets	5/01/10	2/01/13	500 ft. SSW	32° 30'	93° 40'				74	68	68		59					
P.O. Building Texas & Marshall Sts.	2/01/13	7/14/31	800 ft. ENE	32° 30'	93° 40'	196	93	77	77				70					
Slattery Building Texas & Marshall Sts.	7/14/31	8/19/32	75 ft. S	32° 30'	93° 40'	196	227	204	204				197					
Federal Building Texas & Marshall Sts.	8/19/32	10/06/41	78 ft. N	32° 30'	93° 40'	196	227	92	92				90					Wind instruments and sunshine recorder were retained on Slattery Building because of poor exposure at Post Office Building site.
AIRPORT																		
Administration Building	10/07/41	7/06/52	2 mi. NNW	32° 33'	93° 46'	174	64	5	5				3					
Shreveport Downtown AP																		
Greater Shreveport Municipal Airport+ +Shreveport Regional Airport - April 1971	7/06/52	10/01/95	7.6 mi. SSW	32° 28'	93° 49'	b254	d20 j33	e6	d5	%33			a4 f4 g30	4 f31	3 f30 h30	c5 i5	NA	a - 3 ft. to 8/18/66. b - 252 ft. to 9/2/66. c - Commissioned 12/17/60 and moved 750 ft. westward 9/2/66. d - 55 ft. to 11/17/66. e - Removed prior to 1970. f - Relocated April 1970. g - Effective 12/1/72. h - Commissioned 12/9/77. i - Minor adjustment 2/12/84. j - Type change 8/27/85. j - Raised 08/1988.
Shreveport Regional AP	10/01/95	Present	NA	32°27'	93°49'	265											S	ASOS Commissioned 10/01/95

SUBSCRIPTION: Price and ordering information available through: National Climatic Data Center, Federal Building, Asheville, North Carolina 28801.
INQUIRIES/COMMENTS CALL: (828) 271-4800

National Climatic Data Center
151 Patton Avenue, Rm 120
Asheville NC 28801-5001

OFFICIAL BUSINESS
PENALTY FOR PRIVATE USE \$300
FORWARD AND ADDRESS CORRECTION

FIRST CLASS
POSTAGE & FEES PAID
United States Department of Commerce
NOAA Permit No. G - 19