

1999

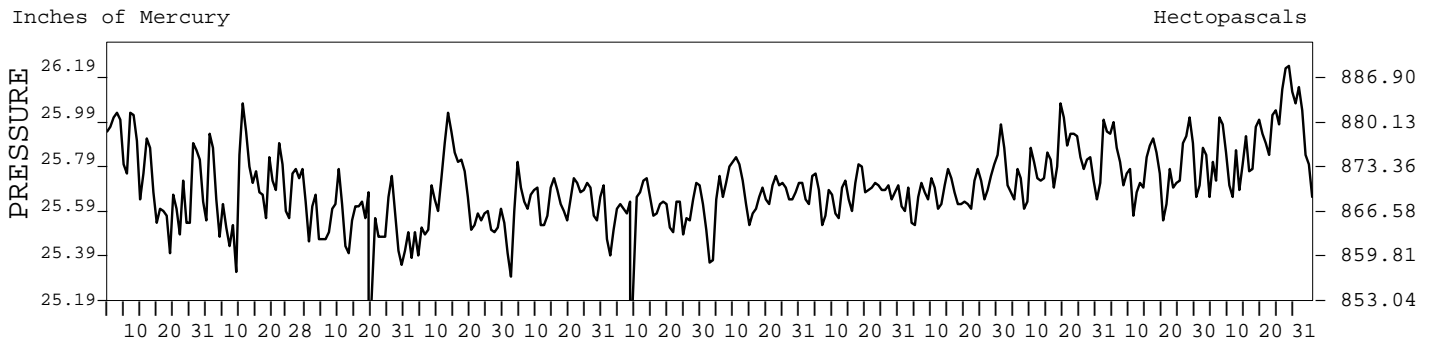
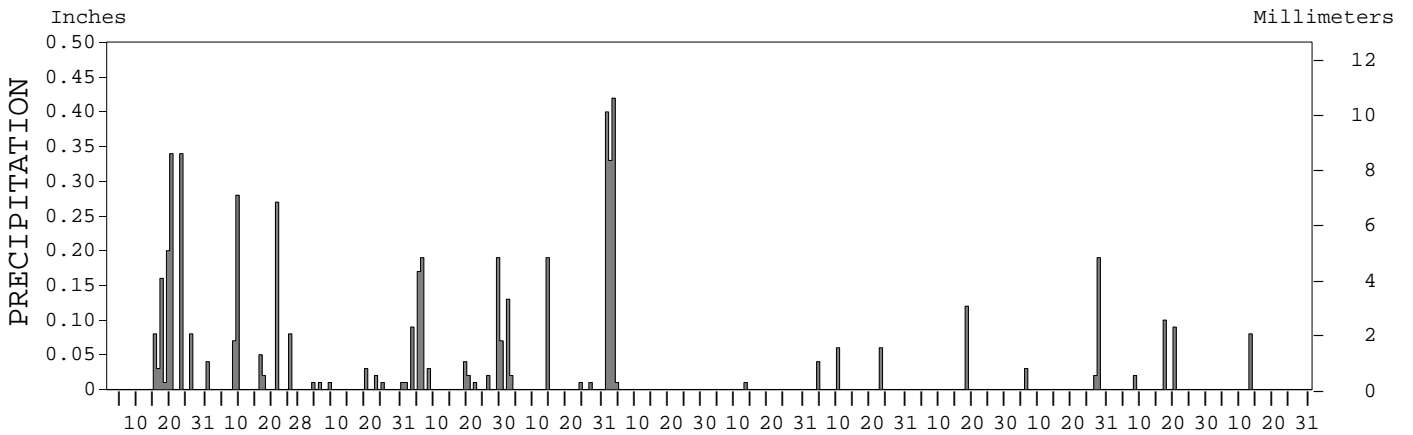
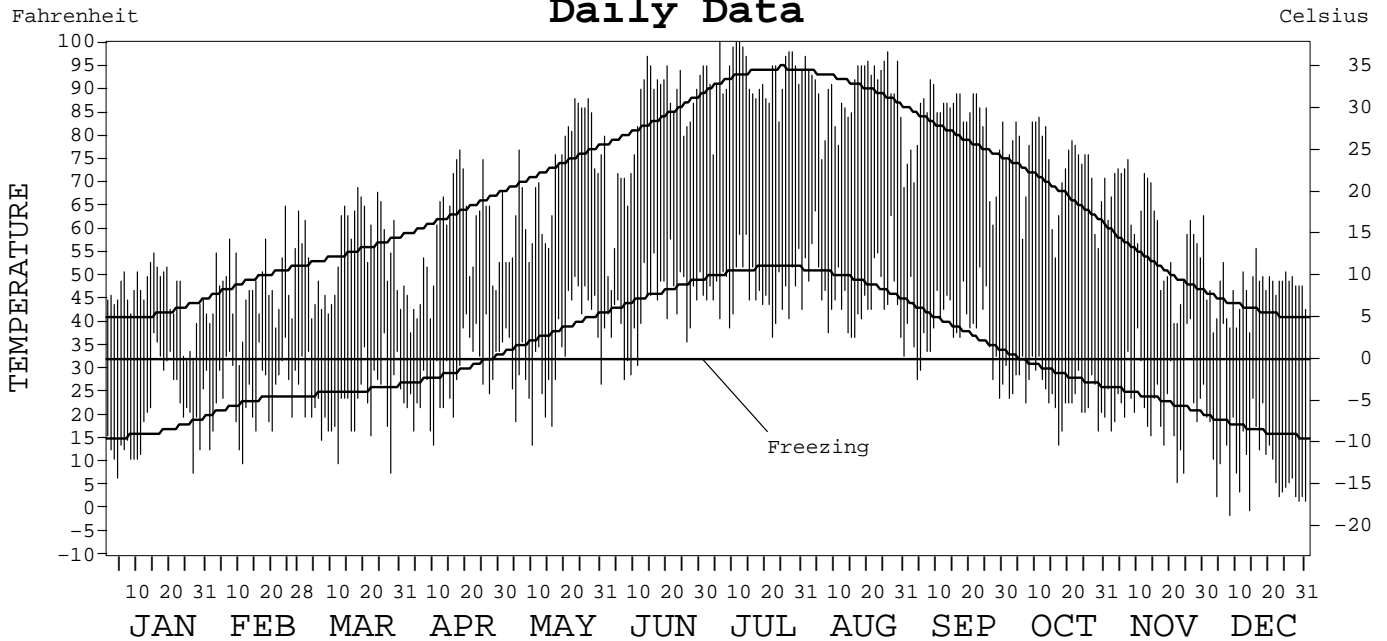
LOCAL CLIMATOLOGICAL DATA  
ANNUAL SUMMARY WITH COMPARATIVE DATA



ISSN 0198-3342

WINNEMUCCA,  
NEVADA (WMC)

Daily Data



I CERTIFY THAT THIS IS AN OFFICIAL PUBLICATION OF THE NATIONAL OCEANIC AND ATMOSPHERIC ADMINISTRATION, AND IS COMPILED FROM RECORDS ON FILE AT THE NATIONAL CLIMATIC DATA CENTER.

*Thomas R. Karl*

NATIONAL OCEANIC AND ATMOSPHERIC ADMINISTRATION  
 NATIONAL ENVIRONMENTAL AND INFORMATION SERVICE  
 NATIONAL ENVIRONMENTAL AND INFORMATION SERVICE  
 NATIONAL CLIMATIC DATA CENTER  
 NATIONAL CLIMATIC DATA CENTER  
 DIRECTOR NATIONAL CLIMATIC DATA CENTER  
 ASHEVILLE, NORTH CAROLINA

# METEOROLOGICAL DATA FOR 1999

## WINNEMUCCA, NV (WMC)

LATITUDE: 40° 54' 07" N      LONGITUDE: 117° 48' 26" W      ELEVATION (FT): GRND: 4298      BARO: 4298      TIME ZONE: PACIFIC (UTC + 8)      WBAN: 24128

	ELEMENT	JAN	FEB	MAR	APR	MAY	JUN	JUL	AUG	SEP	OCT	NOV	DEC	YEAR	
TEMPERATURE °F	MEAN DAILY MAXIMUM	45.3	48.1	55.3	57.3	70.7	81.6	92.8	89.4	82.5	73.0	60.0	46.8	66.9	
	HIGHEST DAILY MAXIMUM	55	65	69	77	88	97	100	98	92	84	75	56	100	
	DATE OF OCCURRENCE	15	24	18	18	27+	14	12+	26	08	11	07	16	JUL 12+	
	MEAN DAILY MINIMUM	20.6	24.8	23.2	28.2	34.3	43.3	47.1	46.3	38.7	25.0	23.1	10.7	30.4	
	LOWEST DAILY MINIMUM	7	10	8	14	14	28	37	33	24	14	6	-1	-1	
	DATE OF OCCURRENCE	04	11	28	10	10	07	22	31	29	17	22	08	DEC 08	
	AVERAGE DRY BULB	33.0	36.5	39.3	42.8	52.5	62.5	70.0	67.9	60.6	49.0	41.6	28.8	48.7	
	MEAN WET BULB	28.9	32.1		36.0	43.1		52.7	52.6		37.0	33.9	23.5		
	MEAN DEW POINT	24.0	25.5		25.9	31.0		34.6	38.6		20.8	22.6	15.7		
	NUMBER OF DAYS WITH:														
	MAXIMUM ≥ 90°	0	0	0	0	0	13	24	18	2	0	0	0	0	57
	MAXIMUM ≤ 32°	2	1	0	0	0	0	0	0	0	0	0	0	0	3
	MINIMUM ≤ 32°	27	24	26	21	12	4	0	0	5	28	26	30	203	
MINIMUM ≤ 0°	0	0	0	0	0	0	0	0	0	0	0	2	2		
H/C	HEATING DEGREE DAYS	985	794	790	660	391	147	4	35	137	490	696	1115	6244	
	COOLING DEGREE DAYS	0	0	0	0	11	79	167	129	11	0	0	0	397	
RH	MEAN (PERCENT)	74	66	54	56	47	41	26	37	30	37	51	64	49	
	HOUR 04 LST	84	78	73	71	73	65	44	58	47	53	65	79	66	
	HOUR 10 LST	72	60	45	49	35	32	20	27	22	28	42	58	41	
	HOUR 16 LST	59	51	32	39	27	25	19	26	19	22	34	41	33	
	HOUR 22 LST	79	72	60	60	52	46	25	40	31	41	58	71	53	
S	PERCENT POSSIBLE SUNSHINE														
W/O	NUMBER OF DAYS WITH:														
	HEAVY FOG (VISBY ≤ 1/4 MI)	0	2	1	3	0	0	0	0	0	0	0	1	7	
	THUNDERSTORMS	0	0	1	1	7	3	0	7	1	0	0	1	21	
CLOUDINESS	SUNRISE-SUNSET: (OKTAS)														
	CEILOMETER (≤ 12,000 FT.)														
	SATELLITE (> 12,000 FT.)														
	MIDNIGHT-MIDNIGHT: (OKTAS)														
	CEILOMETER (≤ 12,000 FT.)														
	SATELLITE (> 12,000 FT.)														
NUMBER OF DAYS WITH:															
CLEAR															
PARTLY CLOUDY															
CLOUDY															
PR	MEAN STATION PRESS. (IN.)	25.73	25.68		25.60	25.60		25.64	25.65	25.67	25.78	25.75	25.89		
	MEAN SEA-LEVEL PRESS. (IN.)	30.17	30.10		29.97	29.93		29.89	29.92		30.16	30.14			
WINDS	RESULTANT SPEED (MPH)		4.5		3.3	2.1		1.4	1.4	1.8	0.8	1.9	1.5		
	RES. DIR. (TENS OF DEGS.)		20		35	31		29	25	01	19	16	19		
	MEAN SPEED (MPH)	7.2	9.2	8.6	9.4	8.7	7.3	8.2	7.5	7.0	6.2	6.9	6.1	7.7	
	PREVAIL. DIR. (TENS OF DEGS.)	18	19	06	35	27	28	27	28	05	16	18	14	28	
	MAXIMUM 2-MINUTE WIND:														
	SPEED (MPH)	32	48	33	38	36	33	32	40	33	35	29	33	48	
	DIR. (TENS OF DEGS.)	23	25	20	25	28	24	25	29	27	25	28	28	25	
	DATE OF OCCURRENCE	23	09	02	08	03	24	03	30	09	28+	08	13	FEB 09	
	MAXIMUM 5-SECOND WIND:														
	SPEED (MPH)	39	54	39	41	43	41	39	46	38	41	36	40	54	
DIR. (TENS OF DEGS.)	22	25	20	25	28	25	09	30	27	24	29	27	25		
DATE OF OCCURRENCE	18	09	02	08	03	24	13+	30	09	28	08	13	FEB 09		
PRECIPITATION	WATER EQUIVALENT:														
	TOTAL (IN.)	1.28	0.77	0.10	0.84	0.36	1.16	0.01	0.16	0.12	0.24	0.21	0.08	5.33	
	GREATEST 24-HOUR (IN.)	0.44	0.32	0.03	0.19	0.19	0.71	0.01	0.06	0.12	0.21	0.10	0.08	0.71	
	DATE OF OCCURRENCE	19-20	08-09	20	29+	14	01-02	13	23+	18	27-28	17	13	JUN 01-02	
	NUMBER OF DAYS WITH:														
	PRECIPITATION ≥ 0.01	9	6	7	11	5	4	1	3	1	3	3	1	54	
PRECIPITATION ≥ 0.10	4	2	0	3	2	3	0	0	1	1	1	0	17		
PRECIPITATION ≥ 1.00	0	0	0	0	0	0	0	0	0	0	0	0	0		
SNOWFALL	SNOW, ICE PELLETS, HAIL:														
	TOTAL (IN.)														
	GREATEST 24-HOUR (IN.)														
	DATE OF OCCURRENCE														
	MAXIMUM SNOW DEPTH (IN.)														
	DATE OF OCCURRENCE														
NUMBER OF DAYS WITH:															
SNOWFALL ≥ 1.0															

# NORMALS, MEANS, AND EXTREMES

## WINNEMUCCA, NV (WMC)

LATITUDE: 40° 54' 07" N      LONGITUDE: 117° 48' 26" W      ELEVATION (FT): GRND: 4298      BARO: 4298      TIME ZONE: PACIFIC (UTC + 8)      WBAN: 24128

		POR	JAN	FEB	MAR	APR	MAY	JUN	JUL	AUG	SEP	OCT	NOV	DEC	YEAR
TEMPERATURE °F	NORMAL DAILY MAXIMUM	30	42.1	49.0	55.0	63.0	73.0	83.1	93.0	90.6	80.1	68.1	52.3	42.7	66.0
	MEAN DAILY MAXIMUM	50	42.0	48.5	54.2	62.2	71.9	81.9	92.3	90.3	80.6	68.1	52.5	43.0	65.6
	HIGHEST DAILY MAXIMUM	50	68	74	81	90	96	106	106	108	103	91	77	67	108
	YEAR OF OCCURRENCE		1971	1986	1972	1981	1986	1988	1979	1983	1950	1996	1980	1980	AUG 1983
	MEAN OF EXTREME MAXS.	51	57.2	63.0	70.3	79.0	89.0	97.1	101.4	100.4	94.1	84.3	69.2	58.0	80.2
	NORMAL DAILY MINIMUM	30	16.7	22.8	25.2	29.4	37.7	45.8	51.2	48.7	38.8	29.3	23.3	17.0	32.2
	MEAN DAILY MINIMUM	50	17.6	22.5	25.1	29.6	37.6	45.1	51.3	48.1	39.2	29.2	22.5	17.1	32.1
	LOWEST DAILY MINIMUM	50	-24	-28	-3	6	12	23	29	28	12	5	-8	-37	-37
	YEAR OF OCCURRENCE		1963	1985	1971	1972	1953	1954	1983	1992	1958	1996	1985	1990	DEC 1990
	MEAN OF EXTREME MINS.	51	-2.9	4.2	10.1	15.6	23.5	31.2	38.5	35.5	24.8	14.8	5.8	-3.1	16.5
	NORMAL DRY BULB	30	29.4	35.9	40.1	46.2	55.4	64.5	72.2	69.7	59.5	48.7	37.8	29.8	49.1
	MEAN DRY BULB	51	29.7	35.5	39.7	45.9	54.8	63.6	71.8	69.1	59.8	48.6	37.6	30.1	48.8
	MEAN WET BULB	47	26.9	31.1	33.0	36.7	44.0	49.9	53.5	51.8	45.6	38.0	32.0	26.5	39.1
	MEAN DEW POINT	47	21.3	23.7	23.4	23.9	30.2	35.3	35.7	34.2	30.1	25.8	24.0	20.0	27.3
	NORMAL NO. DAYS WITH:														
MAXIMUM ≥ 90°	30	0.0	0.0	0.0	*	1.4	9.2	22.7	19.0	5.6	0.1	0.0	0.0	58.0	
MAXIMUM ≤ 32°	30	5.5	1.3	0.1	0.0	0.0	0.0	0.0	0.0	0.0	0.0	0.5	4.8	12.2	
MINIMUM ≤ 32°	30	28.1	24.1	25.4	19.8	7.9	1.1	0.1	0.1	6.2	20.4	24.4	28.3	185.9	
MINIMUM ≤ 0°	30	3.5	0.8	0.1	0.0	0.0	0.0	0.0	0.0	0.0	0.0	0.4	2.6	7.4	
H/C	NORMAL HEATING DEG. DAYS	30	1104	815	772	564	307	104	6	28	203	505	816	1091	6315
	NORMAL COOLING DEG. DAYS	30	0	0	0	0	9	89	229	173	38	0	0	0	538
RH	NORMAL (PERCENT)	30	70	62	55	46	40	38	29	30	36	48	63	69	49
	HOUR 04 LST	30	78	75	71	65	62	59	46	47	53	62	74	78	64
	HOUR 10 LST	30	68	60	49	39	34	31	22	24	29	38	57	66	43
	HOUR 16 LST	30	55	46	37	29	26	22	15	16	20	28	46	57	33
	HOUR 22 LST	30	74	69	61	51	47	42	30	32	39	52	69	76	54
S	PERCENT POSSIBLE SUNSHINE	42	51	56	60	66	72	77	86	85	82	74	54	52	68
W/O	MEAN NO. DAYS WITH:														
	HEAVY FOG (VISBY ≤ 1/4 MI)	49	1.8	0.5	0.4	0.2	0.0	0.1	0.0	0.0	0.0	0.2	0.4	1.2	4.8
	THUNDERSTORMS	49	0.0	0.2	0.4	0.8	2.5	2.8	3.0	3.1	1.9	0.5	0.1	0.1	15.4
CLOUDINESS	MEAN:														
	SUNRISE-SUNSET (OKTAS)	1		3.2	6.4		4.8	2.4							
	MIDNIGHT-MIDNIGHT (OKTAS)	1			7.2		4.8	2.4				0.8			
	MEAN NO. DAYS WITH:														
	CLEAR	1		10.5	8.0	2.0	12.0	14.0	4.0	14.0	14.0	11.0		4.0	
PARTLY CLOUDY	2	1.5	3.5	2.0		5.0	1.0			3.0	3.0		2.0		
CLOUDY	1	8.0	8.0	18.5	7.0	5.5	4.0			1.0			4.0		
PR	MEAN STATION PRESSURE (IN)	25	25.70	25.66	25.60	25.62	25.60	25.62	25.65	25.66	25.67	25.71	25.71	25.74	25.66
	MEAN SEA-LEVEL PRES. (IN)	47	30.17	30.09	30.00	29.97	29.91	29.89	29.90	29.91	29.97	30.08	30.12	30.17	30.01
WINDS	MEAN SPEED (MPH)	19	7.3	8.1	8.5	8.7	8.6	8.5	8.3	7.8	7.7	7.3	7.3	7.2	7.9
	PREVAIL. DIR (TENS OF DEGS)	5	18	18	18	18	27	27	27	27	05	18	18	18	18
	MAXIMUM 2-MINUTE:														
	SPEED (MPH)	5	43	48	40	41	37	45	39	51	40	48	48	48	51
	DIR. (TENS OF DEGS)		23	25	18	27	25	24	25	24	24	29	22	20	24
	YEAR OF OCCURRENCE		1996	1999	1995	1997	1998	1997	1995	1996	1995	1996	1998	1995	AUG 1996
	MAXIMUM 5-SECOND:														
SPEED (MPH)	5	53	54	47	49	47	52	51	58	53	54	60	63	63	
DIR. (TENS OF DEGS)		22	25	18	27	29	25	25	24	23	28	21	20	20	
YEAR OF OCCURRENCE		1996	1999	1995	1997	1997	1997	1995	1996	1995	1996	1998	1995	DEC 1995	
PRECIPITATION	NORMAL (IN)	30	0.74	0.62	0.78	0.84	0.83	0.86	0.27	0.45	0.40	0.62	0.94	0.88	8.23
	MAXIMUM MONTHLY (IN)	50	2.70	2.17	1.66	2.92	3.57	2.86	1.74	1.74	2.80	2.19	2.66	3.66	3.66
	YEAR OF OCCURRENCE		1956	1962	1952	1978	1998	1958	1984	1979	1998	1951	1950	1983	DEC 1983
	MINIMUM MONTHLY (IN)	50	0.04	0.08	0.06	0.06	T	0.00	0.00	0.00	0.00	T	T	0.03	0.00
	YEAR OF OCCURRENCE		1966	1967	1959	1959	1985	1994	1963	1969	1974	1995	1959	1976	JUN 1994
	MAXIMUM IN 24 HOURS (IN)	50	0.74	0.72	0.67	1.01	1.70	1.79	0.86	0.79	1.30	1.64	1.58	0.95	1.79
	YEAR OF OCCURRENCE		1980	1960	1979	1958	1987	1958	1984	1990	1998	1951	1950	1996	JUN 1958
	NORMAL NO. DAYS WITH:														
PRECIPITATION ≥ 0.01	30	7.8	6.9	7.5	6.7	6.0	5.4	2.3	3.0	3.2	4.4	8.2	8.3	69.7	
PRECIPITATION ≥ 1.00	30	0.0	0.0	0.0	0.0	0.0	0.1	0.0	0.0	0.0	0.0	0.0	0.0	0.1	
SNOWFALL	NORMAL (IN)	30	4.7	3.8	4.2	2.9	0.7	0.0	0.0	0.0	0.*	0.5	2.8	5.2	24.8
	MAXIMUM MONTHLY (IN)	47	19.2	13.8	23.4	12.0	5.4	0.2	0.0	T	1.0	7.4	19.6	17.5	23.4
	YEAR OF OCCURRENCE		1993	1969	1952	1964	1965	1995		1990	1986	1984	1985	1971	MAR 1952
	MAXIMUM IN 24 HOURS (IN)	46	8.8	9.9	9.0	7.2	4.3	0.2	0.0	T	1.0	4.9	5.7	8.4	9.9
	YEAR OF OCCURRENCE		1993	1959	1982	1971	1971	1995		1990	1986	1984	1985	1955	FEB 1959
	MAXIMUM SNOW DEPTH (IN)	44	8	9	7	4	3	0	0	T	0	3	7	9	9
	YEAR OF OCCURRENCE		1955	1985	1982	1971	1965			1990		1984	1955	1955	DEC 1955
NORMAL NO. DAYS WITH:															
SNOWFALL ≥ 1.0	30	1.7	1.3	1.5	0.9	0.3	0.0	0.0	0.0	0.*	0.1	1.1	1.8	8.7	

PRECIPITATION (inches) 1999 WINNEMUCCA, NV (WMC)

YEAR	JAN	FEB	MAR	APR	MAY	JUN	JUL	AUG	SEP	OCT	NOV	DEC	ANNUAL
1970	1.85	0.30	0.47	0.92	0.42	1.97	0.29	0.40	0.05	0.28	1.10	1.04	9.09
1971	0.19	0.37	0.75	1.47	1.33	1.60	0.03	0.23	0.37	0.26	1.10	1.47	9.17
1972	0.16	0.61	0.38	0.48	0.18	0.55	0.02	T	0.66	1.53	1.08	0.97	6.62
1973	1.35	0.33	0.89	0.73	1.33	0.06	0.10	0.05	0.48	0.64	0.78	1.18	7.92
1974	0.67	0.28	1.13	0.69	T	0.00	0.29	0.39	0.00	1.67	0.06	1.15	6.33
1975	1.02	0.85	1.29	0.53	0.68	0.70	0.06	0.79	0.19	1.74	0.47	0.27	8.59
1976	0.41	0.50	0.29	0.82	0.37	1.14	0.36	1.29	1.51	0.43	0.16	0.03	7.31
1977	0.34	0.14	0.37	0.25	1.56	2.36	0.26	0.64	0.22	T	0.75	1.19	8.08
1978	0.88	0.58	1.08	2.92	0.26	0.08	0.17	T	1.12	T	0.62	0.39	8.10
1979	0.86	1.22	0.96	1.04	0.25	0.39	0.74	1.74	T	0.61	0.61	0.31	8.73
1980	1.93	0.44	0.53	0.26	2.05	0.57	0.13	0.23	0.18	0.27	0.52	0.25	7.36
1981	0.44	0.51	0.97	0.19	1.94	T	0.01	0.03	0.23	1.08	1.40	1.64	8.44
1982	0.30	0.14	1.39	0.29	0.18	1.50	0.88	0.15	1.08	1.19	1.41	0.52	9.03
1983	1.18	0.97	1.46	0.82	0.78	0.85	0.73	1.53	0.59	0.65	1.25	3.66	14.47
1984	0.11	0.91	1.56	1.24	1.41	1.38	1.74	0.19	0.78	1.62	1.57	0.36	12.87
1985	0.83	0.68	0.73	0.20	T	0.04	0.45	0.02	0.52	0.19	2.51	0.84	7.01
1986	0.32	0.86	0.39	0.75	1.07	0.12	0.02	0.27	0.81	0.73	0.10	0.07	5.51
1987	0.53	0.51	1.32	0.54	3.38	0.46	0.19	T	T	0.57	0.86	0.68	9.04
1988	1.19	0.22	0.10	1.55	0.46	0.52	0.07	0.17	0.28	0.04	1.62	0.51	6.73
1989	0.19	0.71	0.89	0.21	0.40	0.33	T	0.44	0.93	0.59	0.77	0.10	5.56
1990	0.47	0.45	0.59	1.33	1.22	0.21	0.09	0.97	0.21	0.06	0.17	0.60	6.37
1991	0.35	0.31	1.15	0.47	1.71	0.54	0.10	0.29	0.81	0.63	0.81	0.63	7.80
1992	0.09	0.21	1.02	0.08	0.02	0.43	0.07	0.05	0.07	0.49	0.60	1.01	4.14
1993	2.02	0.50	1.30	0.45	0.68	1.03	0.18	0.04	0.03	0.54	0.16	0.34	7.27
1994	0.43	0.79	0.38	1.44	1.29	0.00	0.38	0.02	0.21	0.44	1.68	0.52	7.58
1995	1.32	0.26	1.61	1.10	2.23	1.21	0.28	0.00	0.06	T	0.11	1.63	9.81
1996	1.65	1.10	0.91	0.57	1.25	0.44	0.14	0.07	0.57	0.45	0.57	2.98	10.70
1997	1.60	0.08	0.08	1.60	0.48	2.06	0.43	0.01	0.28	0.23	0.78	0.25	7.88
1998	1.60	1.60	1.23	1.44	3.57	0.90	0.06	T	2.80	1.10	0.89	0.42	15.61
1999	1.28	0.77	0.10	0.84	0.36	1.16	0.01	0.16	0.12	0.24	0.21	0.08	5.33
POR= 122 YRS	0.98	0.81	0.86	0.84	0.92	0.76	0.24	0.25	0.40	0.66	0.78	0.97	8.47

WBAN : 24128

AVERAGE TEMPERATURE (°F) 1999 WINNEMUCCA, NV (WMC)

YEAR	JAN	FEB	MAR	APR	MAY	JUN	JUL	AUG	SEP	OCT	NOV	DEC	ANNUAL
1970	34.2	39.9	35.9	37.9	55.2	64.8	73.8	71.0	55.0	44.3	41.9	30.0	48.7
1971	33.7	34.9	37.9	44.5	52.7	62.4	74.3	74.8	55.0	44.6	36.1	24.2	47.9
1972	27.6	36.9	44.6	44.2	58.9	68.1	74.1	72.7	56.9	47.9	36.3	20.8	49.1
1973	26.6	37.0	37.2	44.2	58.4	65.7	72.8	69.7	58.6	47.7	40.8	36.3	49.6
1974	30.3	36.0	43.9	45.4	56.9	69.1	71.3	67.1	60.6	48.0	37.9	28.5	49.6
1975	27.4	34.6	40.7	40.4	53.8	61.8	74.0	67.1	63.3	49.6	36.3	34.8	48.7
1976	33.1	39.9	37.7	45.9	60.5	64.7	73.8	65.6	64.0	49.9	41.8	29.1	50.5
1977	26.9	38.5	37.2	50.4	50.4	70.6	73.0	72.4	58.9	50.4	40.5	38.9	50.7
1978	36.0	37.6	46.6	47.4	54.1	62.6	71.7	69.4	57.3	50.5	34.6	26.0	49.5
1979	25.4	35.9	41.8	47.1	59.1	66.5	72.9	69.5	63.2	53.1	35.5	32.9	50.2
1980	32.7	41.8	38.1	49.1	55.7	60.9	73.2	68.0	60.5	49.6	39.2	33.9	50.2
1981	34.6	36.9	38.6	49.2	53.2	65.9	71.4	71.5	63.0	45.5	41.5	37.4	50.7
1982	28.3	35.8	38.5	44.4	54.3	63.0	70.1	70.3	57.0	44.9	33.3	30.7	47.6
1983	34.3	39.0	41.7	42.7	53.3	62.0	67.2	70.6	59.8	50.2	38.6	31.5	49.2
1984	24.2	34.3	40.3	42.6	55.1	59.0	71.7	71.5	60.0	43.9	38.3	26.4	47.3
1985	19.1	27.2	36.9	48.9	54.7	68.0	74.7	66.9	55.1	44.9	28.0	26.7	45.9
1986	38.7	41.1	45.8	46.7	53.7	68.4	69.8	72.9	54.4	49.0	38.3	29.0	50.7
1987	26.7	34.5	40.2	51.3	58.4	66.7	67.9	70.3	62.4	53.1	39.1	28.8	50.0
1988	27.5	37.1	40.0	48.9	53.8	66.7	75.7	70.7	58.9	55.0	38.4	27.8	50.0
1989	22.0	27.3	43.8	50.7	54.4	65.7	73.1	67.1	60.2	48.0	37.4	30.2	48.3
1990	31.7	29.6	42.6	52.7	53.0	64.2	73.9	70.2	65.4	49.7	35.3	16.6	48.7
1991	26.2	40.3	39.1	43.2	50.1	61.2	74.8	71.1	63.3	50.8	38.9	29.2	49.0
1992	31.6	40.0	44.4	52.2	62.6	65.7	70.5	71.9	61.3	50.6	34.8	26.1	51.0
1993	20.8	29.4	46.5	46.8	59.3	60.0	65.3	67.2	61.0	50.2	30.7	30.6	47.3
1994	31.6	33.6	44.3	49.1	58.4	66.5	76.3	71.2	62.0	46.5	30.9	29.5	50.0
1995	37.1	41.9	40.4	43.9	51.4	59.3	69.9	68.3	61.2	48.0	42.8	33.7	49.8
1996	33.5	36.0	41.2	46.7	54.1	64.3	75.0	70.4	57.4	47.5	39.1	33.9	49.9
1997	31.5	34.4	42.9	44.7	59.4	62.2	69.4	69.5	61.8	47.1	39.4	28.2	49.2
1998	36.5	35.6	39.2	43.9	49.0	59.1	73.6	70.8	62.7	45.3	38.9	24.8	48.3
1999	33.0	36.5	39.3	42.8	52.5	62.5	70.0	67.9	60.6	49.0	41.6	28.8	48.7
POR= 119 YRS	28.5	34.4	39.8	46.8	54.9	63.4	71.8	69.5	59.7	48.8	37.8	30.1	48.8

HEATING DEGREE DAYS (base 65°F) 1999 WINNEMUCCA, NV (WMC)

YEAR	JUL	AUG	SEP	OCT	NOV	DEC	JAN	FEB	MAR	APR	MAY	JUN	TOTAL
1970-71	0	0	295	635	686	1080	962	837	834	604	374	117	6424
1971-72	3	3	306	625	860	1260	1151	808	626	617	218	36	6513
1972-73	1	6	255	525	855	1370	1184	780	859	616	218	97	6766
1973-74	1	26	200	531	719	881	1070	807	646	581	263	52	5777
1974-75	32	41	153	521	806	1127	1156	844	749	730	339	140	6638
1975-76	13	41	69	474	855	925	982	718	841	568	139	71	5696
1976-77	8	45	81	461	691	1104	1176	734	855	430	450	15	6050
1977-78	2	28	203	444	729	798	894	762	566	523	335	96	5380
1978-79	21	53	241	442	907	1202	1221	809	710	532	205	63	6406
1979-80	1	18	75	363	875	988	995	667	827	471	290	162	5732
1980-81	0	23	146	472	766	958	935	779	809	474	365	89	5816
1981-82	2	0	115	600	697	848	1131	811	812	610	327	124	6077
1982-83	29	8	258	618	943	1054	947	721	714	658	377	103	6430
1983-84	35	6	156	451	785	1032	1257	881	757	662	307	210	6539
1984-85	0	11	185	645	794	1188	1415	1049	863	479	314	49	6992
1985-86	3	39	293	617	1101	1179	809	665	590	542	381	40	6259
1986-87	12	4	345	490	792	1108	1181	849	763	407	221	64	6236
1987-88	47	14	111	364	772	1116	1155	804	769	474	343	94	6063
1988-89	0	4	223	305	792	1146	1328	1051	648	419	336	37	6289
1989-90	3	47	139	523	822	1071	1026	986	690	360	363	92	6122
1990-91	4	38	45	468	887	1498	1195	685	796	647	452	135	6850
1991-92	0	4	93	431	777	1104	1029	717	633	379	106	95	5368
1992-93	13	40	124	438	899	1198	1365	992	567	536	192	183	6547
1993-94	45	40	166	448	1024	1061	1027	875	636	472	209	59	6062
1994-95	0	2	101	565	1016	1094	854	640	756	625	413	195	6261
1995-96	18	22	137	518	656	960	968	837	728	538	331	84	5797
1996-97	2	12	235	536	769	959	1032	850	675	602	183	106	5961
1997-98	16	7	132	550	761	1136	875	816	793	623	490	176	6375
1998-99	0	5	134	606	775	1240	985	794	790	660	391	147	6527
1999-	4	35	137	490	696	1115							

WBAN : 24128

COOLING DEGREE DAYS (base 65°F) 1999 WINNEMUCCA, NV (WMC)

YEAR	JAN	FEB	MAR	APR	MAY	JUN	JUL	AUG	SEP	OCT	NOV	DEC	ANNUAL
1971	0	0	0	0	0	45	295	313	13	0	0	0	666
1972	0	0	0	0	40	136	287	250	17	1	0	0	731
1973	0	0	0	0	18	124	248	180	15	0	0	0	585
1974	0	0	0	0	19	184	236	112	29	0	0	0	580
1975	0	0	0	0	0	50	297	113	25	3	0	0	488
1976	0	0	0	0	7	68	287	71	56	0	0	0	489
1977	0	0	0	0	4	188	257	265	27	0	0	0	741
1978	0	0	0	0	5	31	234	197	18	0	0	0	485
1979	0	0	0	0	29	114	256	165	26	3	0	0	593
1980	0	0	0	0	8	48	262	126	19	2	0	0	465
1981	0	0	0	6	5	124	208	208	61	0	0	0	612
1982	0	0	0	0	2	71	195	177	22	0	0	0	467
1983	0	0	0	0	21	21	108	189	10	0	0	0	349
1984	0	0	0	0	8	37	217	218	40	0	0	0	520
1985	0	0	0	0	3	148	311	105	3	0	0	0	570
1986	0	0	0	0	37	147	166	254	32	0	0	0	636
1987	0	0	0	3	26	123	144	185	41	0	0	0	522
1988	0	0	0	0	5	152	337	187	48	0	0	0	729
1989	0	0	0	0	13	66	264	118	1	0	0	0	462
1990	0	0	0	0	0	74	290	205	62	0	0	0	631
1991	0	0	0	0	0	26	310	200	49	0	0	0	585
1992	0	0	0	1	39	121	194	258	20	2	0	0	635
1993	0	0	0	0	24	39	60	116	50	0	0	0	289
1994	0	0	0	0	13	111	359	203	19	0	0	0	705
1994	0	0	0	0	13	111	359	203	19	0	0	0	705
1995	0	0	0	0	0	32	181	133	31	0	0	0	377
1996	0	0	0	0	2	68	320	189	12	1	0	0	592
1997	0	0	0	0	16	27	160	154	39	1	0	0	397
1998	0	0	0	0	0	7	274	195	72	0	0	0	548
1999	0	0	0	0	11	79	167	129	11	0	0	0	397

SNOWFALL (inches) 1999 WINNEMUCCA, NV (WMC)

YEAR	JUL	AUG	SEP	OCT	NOV	DEC	JAN	FEB	MAR	APR	MAY	JUN	TOTAL
1970-71	0.0	0.0	0.0	0.4	0.1	4.9	1.8	2.4	2.0	8.8	4.3	0.0	24.7
1971-72	0.0	0.0	0.2	2.3	5.5	17.5	0.8	6.2	2.7	2.6	T	0.0	37.8
1972-73	0.0	0.0	0.0	0.1	1.2	13.3	9.9	1.1	7.4	3.4	0.0	0.0	36.4
1973-74	0.0	0.0	0.0	0.0	2.8	4.6	5.5	2.5	10.0	3.1	T	0.0	28.5
1974-75	0.0	0.0	0.0	T	T	5.7	7.0	7.2	4.9	2.9	4.3	0.0	32.0
1975-76	0.0	0.0	0.0	T	3.3	4.1	3.0	1.5	3.7	4.8	0.0	0.0	20.4
1976-77	0.0	0.0	0.0	T	T	0.4	4.5	0.9	4.8	0.7	1.6	0.0	12.9
1977-78	0.0	0.0	T	0.0	3.0	3.6	4.4	3.8	0.0	5.8	1.9	0.0	22.5
1978-79	0.0	0.0	T	0.0	1.8	4.2	5.2	12.1	4.6	1.9	0.1	0.0	29.9
1979-80	0.0	0.0	0.0	0.0	1.6	0.8	2.7	T	0.5	0.4	T	0.0	6.0
1980-81	0.0	0.0	0.0	T	T	0.2	3.7	1.2	1.1	T	T	0.0	6.2
1981-82	0.0	0.0	0.0	T	0.5	3.8	4.6	0.8	15.9	0.9	T	0.0	26.5
1982-83	0.0	0.0	0.0	T	5.8	2.3	9.2	2.1	0.9	1.3	0.3	0.0	21.9
1983-84	0.0	0.0	0.0	0.0	2.2	14.6	1.4	2.4	5.5	2.1	T	0.0	28.2
1984-85	0.0	0.0	0.0	7.4	2.6	3.9	8.8	7.2	5.8	0.4	T	0.0	36.1
1985-86	0.0	0.0	T	T	19.6	0.8	0.3	2.0	1.8	0.4	1.3	0.0	26.2
1986-87	0.0	0.0	1.0	0.0	0.8	T	2.7	5.1	6.0	0.1	0.0	0.0	15.7
1987-88	0.0	0.0	0.0	0.0	0.8	3.4	T	T	T	T	T	T	T
1988-89	0.0	0.0	0.0	0.1	1.6	7.1	2.8	8.4	0.5	1.9	0.0	T	T
1989-90	0.0	0.0	0.0	0.1	1.6	T	3.3	11.7	0.3	T	T	0.0	17.0
1990-91	0.0	T	0.0	0.0	2.0	8.0	3.7	T	8.6	0.7	T	T	23.0
1991-92	0.0	0.0	0.0	2.3	1.7	1.5	0.9	0.3	0.3	0.0	0.0	0.0	7.0
1992-93	0.0	0.0	0.0	0.0	0.4	6.8	19.2	7.8	T	0.7	T	0.0	34.9
1993-94	0.0	0.0	0.0	0.0	1.0	4.1	4.1	5.9	T	2.1	T	0.0	17.2
1994-95	0.0	0.0	0.0	T	3.0	7.5	2.5	1.0	4.4	0.0	0.0	0.2	18.6
1995-96	0.0	0.0	0.0		0.0								
1996-97													
1997-98													
1998-99													
1999-													
POR= 46 YRS	0.0	T	T	0.4	2.2	4.7	5.2	3.7	4.2	2.2	0.5	T	23.1

WBAN : 24128

REFERENCE NOTES:

<p>PAGE 1: THE TEMPERATURE GRAPH SHOWS NORMAL MAXIMUM AND NORMAL MINIMUM DAILY TEMPERATURES (SOLID CURVES) AND THE ACTUAL DAILY HIGH AND LOW TEMPERATURES (VERTICAL BARS).</p> <p>PAGE 2 AND 3: H/C INDICATES HEATING AND COOLING DEGREE DAYS. RH INDICATES RELATIVE HUMIDITY W/O INDICATES WEATHER AND OBSTRUCTIONS S INDICATES SUNSHINE. PR INDICATES PRESSURE. CLOUDINESS ON PAGE 3 IS THE SUM OF THE CEILOMETER AND SATELLITE DATA NOT TO EXCEED EIGHT EIGHTHS(OKTAS).</p> <p>GENERAL: T INDICATES TRACE PRECIPITATION, AN AMOUNT GREATER THAN ZERO BUT LESS THAN THE LOWEST REPORTABLE VALUE. + INDICATES THE VALUE ALSO OCCURS ON EARLIER DATES. BLANK ENTRIES DENOTE MISSING OR UNREPORTED DATA. NORMALS ARE 30-YEAR AVERAGES (1961 - 1990). ASOS INDICATES AUTOMATED SURFACE OBSERVING SYSTEM. PM INDICATES THE LAST DAY OF THE PREVIOUS MONTH. POR (PERIOD OF RECORD) BEGINS WITH THE JANUARY DATA MONTH AND IS THE NUMBER OF YEARS USED TO COMPUTE THE MEAN. INDIVIDUAL MONTHS WITHIN THE POR MAY BE MISSING. WHEN THE POR FOR A NORMAL IS LESS THAN 30 YEARS, THE NORMAL IS PROVISIONAL AND IS BASED ON THE NUMBER OF YEARS INDICATED. 0.* OR * INDICATES THE VALUE OR MEAN-DAYS-WITH IS BETWEEN 0.00 AND 0.05. CLOUDINESS FOR ASOS STATIONS DIFFERS FROM THE NON-ASOS OBSERVATION TAKEN BY A HUMAN OBSERVER. ASOS STATION CLOUDINESS IS BASED ON TIME-AVERAGED CEILOMETER DATA FOR CLOUDS AT OR BELOW 12,000 FEET AND ON SATELLITE DATA FOR CLOUDS ABOVE 12,000 FEET. THE NUMBER OF DAYS WITH CLEAR, PARTLY CLOUDY, AND CLOUDY CONDITIONS FOR ASOS STATIONS IS THE SUM OF THE CEILOMETER AND SATELLITE DATA FOR THE SUNRISE TO SUNSET PERIOD.</p>	<p>GENERAL CONTINUED: CLEAR INDICATES 0 - 2 OKTAS, PARTLY CLOUDY INDICATES 3 - 6 OKTAS, AND CLOUDY INDICATES 7 OR 8 OKTAS. WHEN AT LEAST ONE OF THE ELEMENTS (CEILOMETER OR SATELLITE) IS MISSING, THE DAILY CLOUDINESS IS NOT COMPUTED. WIND DIRECTION IS RECORDED IN TENS OF DEGREES (2 DIGITS) CLOCKWISE FROM TRUE NORTH. "00" INDICATES CALM. "36" INDICATES TRUE NORTH. RESULTANT WIND IS THE VECTOR AVERAGE OF THE SPEED AND DIRECTION. AVERAGE TEMPERATURE IS THE SUM OF THE MEAN DAILY MAXIMUM AND MINIMUM TEMPERATURE DIVIDED BY 2. SNOWFALL DATA COMPRISE ALL FORMS OF FROZEN PRECIPITATION, INCLUDING HAIL. A HEATING (COOLING) DEGREE DAY IS THE DIFFERENCE BETWEEN THE AVERAGE DAILY TEMPERATURE AND 65° F. DRY BULB IS THE TEMPERATURE OF THE AMBIENT AIR. DEW POINT IS THE TEMPERATURE TO WHICH THE AIR MUST BE COOLED TO ACHIEVE 100 PERCENT RELATIVE HUMIDITY. WET BULB IS THE TEMPERATURE THE AIR WOULD HAVE IF THE MOISTURE CONTENT WAS INCREASED TO 100 PERCENT RELATIVE HUMIDITY.</p> <p>ON JULY 1, 1996, THE NATIONAL WEATHER SERVICE BEGAN USING THE "METAR" OBSERVATION CODE THAT WAS ALREADY EMPLOYED BY MOST OTHER NATIONS OF THE WORLD. THE MOST NOTICEABLE DIFFERENCE IN THIS ANNUAL PUBLICATION WILL BE THE CHANGE IN UNITS FROM TENTHS TO EIGHTHS(OKTAS) FOR REPORTING THE AMOUNT OF SKY COVER.</p>
---	---

1999  
WINNEMUCCA,  
NEVADA (WMC)

Winnemucca lies at an elevation about 4300 feet above sea level and is effectively cut off by the Sierra Nevada Mountains from the moisture source of the Pacific Ocean. Winnemucca has a climate marked by warm days, cool nights, and light precipitation. Sixty-six percent of the annual rainfall occurs as rain and snow between December and May. The winter snow pack in the surrounding mountains is generally sufficient for essential summertime irrigation. Reservoirs along the streams hold surplus water for less favorable years. As a result of the characteristic dryness of the climate, the neighboring valleys and hills are covered with sagebrush, and trees are found only along streams and in other places where water is sufficient the year round. Though it is heavier in the mountains, snowfall at Winnemucca itself has had measurable amounts fall in every month except July, August and September. During

the winter months, snow on the ground permits grazing in many desert regions where there is no other source of stock water. Grazing in the summer months is restricted to mountain range tracts where there is sufficient water. Streams in many areas have been stocked with fish and provide good fishing each year.

Temperatures in this plateau area tend to rise sharply right after sunrise and remain comparatively high during the daylight hours, then drop rapidly about sundown. Daily temperature variations of 50 degrees are not uncommon.

Based on the 1951-1980 period, the average first occurrence of 32 degrees Fahrenheit in the fall is September 10 and the average last occurrence in the spring is June 8.

# STATION LOCATION

WINNEMUCCA, NEVADA

LOCATION	OCCUPIED FROM	OCCUPIED TO	AIRLINE DISTANCES AND DIRECTIONS FROM PREVIOUS LOCATION	LATITUDE NORTH	LONGITUDE WEST	ELEVATION ABOVE										AUCOMPAHCHICHO	* Type M = AMOS T = AUTOB S = ASOS W = AWOS	REMARKS	
						SEA LEVEL	GROUND												
							WIND	WIND	WIND	WIND	WIND	WIND	WIND	WIND	WIND				WIND
Railroad Street	2/?/70	7/01/77		40°58'	117°43'	4329												Records kept by the agents of the Central (later Southern) Pacific Railroad from February 1870 to 12/1/84.	
Arlington Hotel Railroad Street	7/01/77	12/04/80		40°58'	117°43'	4329	52	19										Station destroyed by fire 12/4/80.	
Donalin Building Railroad Street	12/29/80	6/15/83	1500 ft. NE	40°58'	117°43'	4329	37	18											
Railroad Street	6/15/83	12/01/84		40°58'	117°43'	4329													
Corner 5th & Bridge St.	12/01/84	3/01/88	600 ft. ESE	40°58'	117°43'	4357	47	18											
Old Humboldt County Court House	3/01/88	7/01/04	600 ft. NW	40°58'	117°43'	4339	70	59											
Hayden Cottage 215 Aiken Street	7/01/04	9/01/40	1600 ft. WSW	40°58'	117°43'	4290	56	18											
Giroux House 438 W. 4th	9/01/40	9/15/49	1500 ft. S	40°58'	117°43'	4289	56	5	5										
<u>AIRPORT</u>																			
Municipal Airport	9/15/49	5/01/70	5 mi. SW	40°54'	117°48'	c4301	a20	5	5			3	4	3	b4		a - 34 feet to 4/22/66. b - Commissioned 1200 feet SE of thermometer site 8/8/68. c - 4299 feet to 8/8/68.		
Municipal Airport	5/01/70	5/08/85	30 ft. W	40°54'	117°48'	4301	d20	s4	s4	19		5	5	s4	d4	NA	d - Same site as prior to 5/1/70. s - Standby equipment.		
5330 Jays Road Municipal Airport	5/08/85	10/01/94	Unknown	40°54'	117°48'	4298	33	e6	e6	g22	f5	f5	f5		5	NA	e - Relocated 5/10/85. f - Relocated 5/13/85. g - Relocated 5/15/85.		
Municipal Airport	10/01/94	Present	NA	40°54'	117°48'	4298										S	ASOS commissioned 10/1/94.		

SUBSCRIPTION: Price and ordering information available through: National Climatic Data Center, Federal Building, Asheville, North Carolina 28801.  
INQUIRIES/COMMENTS CALL: (828) 271-4800

National Climatic Data Center  
151 Patton Avenue, Rm 120  
Asheville NC 28801-5001

OFFICIAL BUSINESS  
PENALTY FOR PRIVATE USE \$300  
FORWARD AND ADDRESS CORRECTION

FIRST CLASS  
POSTAGE & FEES PAID  
United States Department of Commerce  
NOAA Permit No. G - 19