

2000

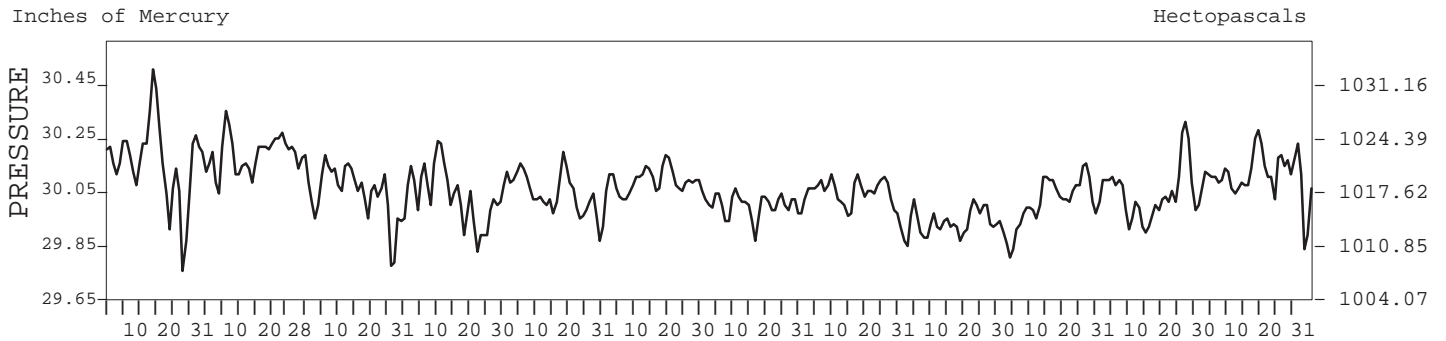
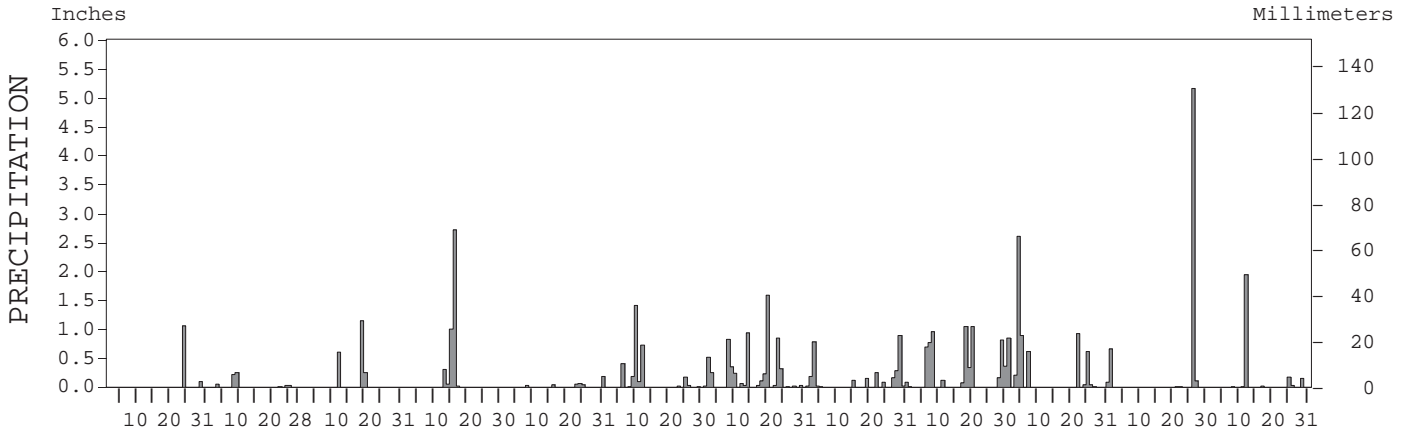
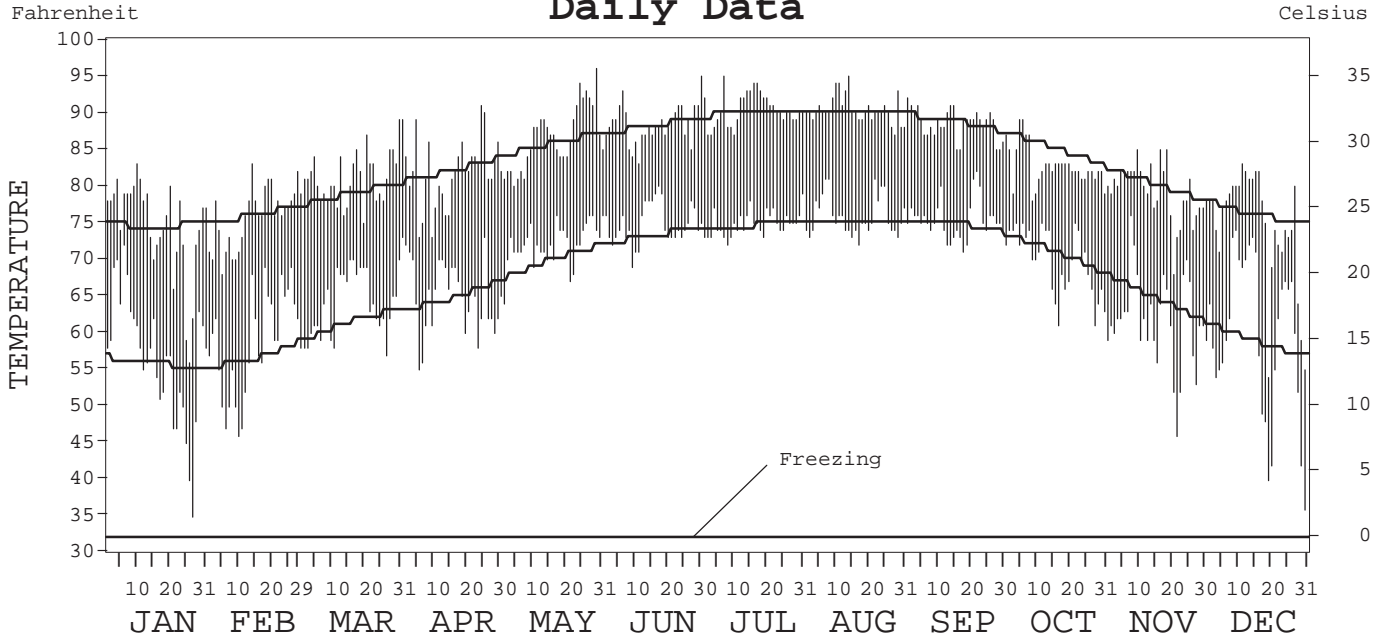
# LOCAL CLIMATOLOGICAL DATA ANNUAL SUMMARY WITH COMPARATIVE DATA



ISSN 0198-1315

WEST PALM BEACH,  
FLORIDA (PBI)

## Daily Data



I CERTIFY THAT THIS IS AN OFFICIAL PUBLICATION OF THE NATIONAL OCEANIC AND ATMOSPHERIC ADMINISTRATION, AND IS COMPILED FROM RECORDS ON FILE AT THE NATIONAL CLIMATIC DATA CENTER.

*Thomas R. Karl*

NATIONAL  
OCEANIC AND  
ATMOSPHERIC ADMINISTRATION

NATIONAL  
ENVIRONMENTAL SATELLITE, DATA,  
AND INFORMATION SERVICE

NATIONAL  
CLIMATIC DATA CENTER  
ASHEVILLE, NORTH CAROLINA

DIRECTOR  
NATIONAL CLIMATIC DATA CENTER

# METEOROLOGICAL DATA FOR 2000

## WEST PALM BEACH, FL (PBI)

LATITUDE: 26° 41' 05" N      LONGITUDE: 80° 05' 58" W      ELEVATION (FT): GRND: 22      BARO: 22      TIME ZONE: EASTERN (UTC + 5)      WBAN: 12844

	ELEMENT	JAN	FEB	MAR	APR	MAY	JUN	JUL	AUG	SEP	OCT	NOV	DEC	YEAR	
TEMPERATURE °F	MEAN DAILY MAXIMUM	74.5	75.9	81.4	81.8	86.7	88.4	90.5	90.4	88.5	82.8	79.3	74.7	82.9	
	HIGHEST DAILY MAXIMUM	83	83	89	91	96	95	95	95	92	89	85	83	96	
	DATE OF OCCURRENCE	10	14	31+	24	29	30	07	14	01	06+	19+	12	MAY 29	
	MEAN DAILY MINIMUM	56.5	58.6	64.4	64.8	72.1	74.8	74.9	75.9	75.4	69.8	61.7	59.6	67.4	
	LOWEST DAILY MINIMUM	35	46	57	55	64	69	72	72	71	61	46	36	35	
	DATE OF OCCURRENCE	27	10	26	05	01	09	08	17	18	28+	22	31	JAN 27	
	AVERAGE DRY BULB	65.5	67.3	72.9	73.3	79.4	81.6	82.7	83.2	82.0	76.3	70.5	67.2	75.2	
	MEAN WET BULB	60.4	61.3	66.8	66.6	71.8	74.9	76.4	76.5	76.6	69.7	64.9	61.9	69.0	
	MEAN DEW POINT	56.3	57.1	63.1	62.7	68.0	72.0	74.3	74.0	74.5	66.3	60.9	57.9	65.6	
	NUMBER OF DAYS WITH:														
	MAXIMUM ≥ 90°	0	0	0	2	7	9	20	23	9	0	0	0	0	70
	MAXIMUM ≤ 32°	0	0	0	0	0	0	0	0	0	0	0	0	0	0
	MINIMUM ≤ 32°	0	0	0	0	0	0	0	0	0	0	0	0	0	0
	MINIMUM ≤ 0°	0	0	0	0	0	0	0	0	0	0	0	0	0	0
H/C	HEATING DEGREE DAYS	76	35	0	1	0	0	0	0	0	0	12	74	198	
	COOLING DEGREE DAYS	99	106	250	259	454	508	556	572	514	357	183	150	4008	
RH	MEAN (PERCENT)	74	72	73	71	70	75	80	77	80	73	73	74	74	
	HOUR 01 LST	83	82	81	82	79	83	89	86	87	80	81	80	83	
	HOUR 07 LST	85	87	88	83	79	81	89	87	90	84	87	83	85	
	HOUR 13 LST	59	55	57	57	58	62	66	63	68	61	56	62	60	
	HOUR 19 LST	69	69	71	67	69	74	80	76	79	72	69	72	72	
S	PERCENT POSSIBLE SUNSHINE														
W/O	NUMBER OF DAYS WITH:														
	HEAVY FOG (VISBY ≤ 1/4 MI)	1	0	0	0	0	0	0	0	1	1	2	0	5	
	THUNDERSTORMS	1	0	0	5	4	15	26	15	13	2	1	0	82	
CLOUDINESS	SUNRISE-SUNSET: (OKTAS)														
	CEILOMETER (≤ 12,000 FT.)														
	SATELLITE (> 12,000 FT.)														
	MIDNIGHT-MIDNIGHT: (OKTAS)														
	CEILOMETER (≤ 12,000 FT.)														
	SATELLITE (> 12,000 FT.)														
NUMBER OF DAYS WITH:															
CLEAR															
PARTLY CLOUDY															
CLOUDY															
PR	MEAN STATION PRESS. (IN.)	30.14	30.17	30.03	30.02	30.03	30.07	29.99	30.02	29.92	30.02	30.03	30.10	30.05	
	MEAN SEA-LEVEL PRESS. (IN.)	30.16	30.19	30.05	30.04	30.05	30.09	30.01	30.04	29.94	30.04	30.05	30.12	30.06	
WINDS	RESULTANT SPEED (MPH)	1.4	4.1	0.2	2.0	1.0	4.6	2.0	3.5	2.9	6.6	1.8	3.8	1.5	
	RES. DIR. (TENS OF DEGS.)	03	07	02	24	33	15	12	15	11	03	05	04	08	
	MEAN SPEED (MPH)	9.1	9.0	9.8	10.1	9.8	7.1	8.3	7.7	8.3	7.7	8.2	10.4		
	PREVAIL. DIR. (TENS OF DEGS.)	09	07	08	09	09	12	12	12	13	05	32	32	12	
	MAXIMUM 2-MINUTE WIND:														
	SPEED (MPH)	32	23	26	28	24	29	33	30	33	29	29	30	33	
	DIR. (TENS OF DEGS.)	01	07	23	18	11	16	23	20	19	34	10	31	19	
	DATE OF OCCURRENCE	14	22+	28+	08	08	05	17	30	17	06	25	19	SEP 17	
	MAXIMUM 5-SECOND WIND:														
	SPEED (MPH)	38	26	34	36	28	36	43	35	43	37	40	35	43	
DIR. (TENS OF DEGS.)	01	08	23	22	11	17	23	20	19	33	11	31	19		
DATE OF OCCURRENCE	14	25+	28	24	08	05	17	30+	17	06	25	19	SEP 17		
PRECIPITATION	WATER EQUIVALENT:														
	TOTAL (IN.)	1.15	0.59	2.00	4.09	0.40	3.06	6.43	3.03	7.23	6.68	5.28	2.33	42.27	
	GREATEST 24-HOUR (IN.)	1.06	0.47	1.15	2.72	0.18	1.41	1.59	1.16	1.11	3.12	5.16	1.95	5.16	
	DATE OF OCCURRENCE	24	08-09	18	15	30	09	19	27-28	29-30	03-04	25	10-11	NOV 25	
	NUMBER OF DAYS WITH:														
	PRECIPITATION ≥ 0.01	2	6	3	5	6	11	19	14	12	11	4	7	100	
PRECIPITATION ≥ 0.10	1	2	3	3	1	5	11	8	11	7	2	3	57		
PRECIPITATION ≥ 1.00	1	0	1	2	0	1	1	0	2	1	1	1	11		
SNOWFALL	SNOW, ICE PELLETS, HAIL:														
	TOTAL (IN.)	0.0	0.0	0.0	0.0	0.0	0.0	0.0	0.0	0.0	0.0	0.0	0.0	0.0	
	GREATEST 24-HOUR (IN.)	0.0	0.0	0.0	0.0	0.0	0.0	0.0	0.0	0.0	0.0	0.0	0.0	0.0	
	DATE OF OCCURRENCE														
	MAXIMUM SNOW DEPTH (IN.)	0	0	0	0	0	0	0	0	0	0	0	0	0	
	DATE OF OCCURRENCE														
NUMBER OF DAYS WITH:															
SNOWFALL ≥ 1.0	0	0	0	0	0	0	0	0	0	0	0	0	0		



PRECIPITATION (inches) 2000 WEST PALM BEACH, FL (PBI)

YEAR	JAN	FEB	MAR	APR	MAY	JUN	JUL	AUG	SEP	OCT	NOV	DEC	ANNUAL
1971	0.82	1.08	0.55	1.27	5.04	9.03	5.13	4.38	6.24	5.13	10.77	1.87	51.31
1972	2.47	2.55	3.99	12.62	11.19	12.34	13.25	2.76	3.72	1.20	6.98	2.08	75.15
1973	2.62	2.71	2.28	1.45	4.13	7.53	7.74	7.51	7.59	6.97	2.06	2.15	54.74
1974	8.30	0.42	2.44	1.18	2.93	4.87	11.00	5.85	5.62	9.30	3.99	2.56	58.46
1975	0.47	0.68	0.85	0.57	6.23	7.18	5.67	2.49	11.58	5.60	1.81	1.27	44.40
1976	1.09	4.59	1.84	1.26	15.22	4.52	1.67	7.29	7.74	3.75	3.29	3.06	55.32
1977	3.49	1.11	0.53	1.65	14.80	4.03	2.19	8.03	13.21	2.01	5.84	7.37	64.26
1978	3.40	2.49	2.73	0.88	4.55	10.36	5.91	2.27	6.36	6.98	10.98	5.30	62.21
1979	3.06	0.80	1.06	8.71	5.09	6.34	1.89	3.08	19.63	4.78	4.08	2.66	61.18
1980	4.11	3.85	2.53	3.90	8.06	4.26	7.61	5.02	6.76	4.02	5.28	1.27	56.67
1981	0.43	4.22	2.49	0.43	5.12	4.58	3.72	10.33	9.30	2.10	4.52	2.50	49.74
1982	1.29	2.31	16.78	7.67	6.90	10.37	2.57	5.72	6.03	4.83	14.63	1.52	80.62
1983	11.01	8.71	3.42	3.27	5.30	9.39	4.71	8.21	9.62	7.80	4.24	7.03	82.71
1984	1.36	4.49	5.06	5.99	8.44	5.84	7.34	6.39	8.69	1.67	14.39	0.13	69.79
1985	0.84	0.53	3.49	3.35	4.63	4.84	10.77	5.38	9.38	2.89	0.54	1.35	47.99
1986	6.34	1.58	5.48	0.33	1.59	9.82	10.20	4.88	4.08	8.11	6.80	10.10	69.31
1987	1.17	1.20	7.75	2.61	5.63	6.60	4.42	1.73	11.90	4.78	9.43	1.47	58.69
1988	3.38	3.04	5.51	3.65	6.94	10.95	9.01	11.38	1.77	3.54	3.86	1.88	64.91
1989	0.97	1.00	2.58	6.04	0.78	4.96	3.52	5.83	4.05	5.84	1.15	1.94	38.66
1990	1.19	1.39	1.91	2.82	6.74	6.67	10.17	6.60	11.70	3.45	1.23	1.94	55.81
1991	10.43	4.36	3.36	9.54	8.94	7.45	7.16	7.34	6.44	7.58	2.32	4.44	79.36
1992	1.69	3.26	2.61	2.64	1.59	16.08	2.90	6.12	6.99	2.82	12.56	1.85	61.11
1993	8.05	2.06	11.06	2.53	2.22	2.89	5.41	4.78	5.35	11.99	5.78	0.82	62.94
1994	5.85	3.22	2.62	7.57	4.50	10.89	5.22	10.33	11.41	4.42	8.17	11.69	85.89
1995	3.85	1.12	2.37	3.91	0.85	7.79	6.86	20.12	5.69	11.11	1.49	1.60	66.76
1996	1.54	0.67	5.06	0.78	6.52	7.56	2.77	4.24	7.53	6.54	2.06	1.55	46.82
1997	4.24	4.45	3.39	4.66	3.34	11.75	3.29	10.60	6.85	0.56	3.98	5.02	62.13
1998	11.18	6.23	4.10	1.12	1.94	1.68	8.81	5.73	13.36	1.36	7.64	3.90	67.05
1999	6.73	1.90	0.55	0.67	1.99	13.62	1.70	12.08	5.04	15.56	1.44	1.45	62.73
2000	1.15	0.59	2.00	4.09	0.40	3.06	6.43	3.03	7.23	6.68	5.28	2.33	42.27
POR= 62 YRS	3.13	2.54	3.47	3.54	5.26	7.76	6.21	6.85	8.91	7.08	3.93	2.73	61.41

WBAN : 12844

AVERAGE TEMPERATURE (°F) 2000 WEST PALM BEACH, FL (PBI)

YEAR	JAN	FEB	MAR	APR	MAY	JUN	JUL	AUG	SEP	OCT	NOV	DEC	ANNUAL
1971	65.0	67.4	65.9	71.8	78.8	80.9	82.3	83.1	81.1	79.0	73.1	73.1	75.1
1972	71.8	67.0	70.9	74.1	78.8	81.8	82.5	83.2	82.6	80.4	74.3	72.0	76.6
1973	68.7	64.0	73.6	74.5	79.2	81.7	82.1	81.7	82.0	77.5	75.0	66.4	75.5
1974	73.2	66.7	73.6	74.3	78.6	80.0	81.8	82.7	82.3	77.0	72.0	66.8	75.8
1975	71.2	72.1	71.8	73.9	77.8	79.5	79.8	81.4	80.5	77.6	71.3	66.9	75.3
1976	62.2	66.3	72.6	72.7	77.4	78.1	81.1	81.2	80.0	75.6	70.6	66.0	73.7
1977	58.5	63.6	73.7	75.0	76.9	81.2	81.9	82.5	81.0	75.3	72.6	67.3	74.1
1978	62.1	60.4	68.4	73.2	78.9	81.6	82.1	82.2	80.7	77.0	73.7	71.3	74.3
1979	62.7	63.7	68.0	74.4	76.0	80.2	82.7	82.5	81.3	77.5	73.2	67.1	74.1
1980	64.1	60.9	70.2	71.8	77.5	82.5	83.5	82.5	81.3	78.6	72.4	65.5	74.2
1981	58.7	67.6	67.9	75.7	78.5	83.4	84.1	82.8	81.1	78.1	67.9	65.2	74.3
1982	65.7	73.6	73.0	75.9	76.8	80.6	83.2	83.0	81.8	78.5	75.6	70.8	76.5
1983	64.8	66.1	66.5	72.2	77.6	80.6	84.0	84.3	81.6	76.9	70.0	68.3	74.4
1984	64.6	66.5	68.7	71.2	77.4	78.7	80.9	81.3	79.6	77.4	71.4	71.1	74.1
1985	60.7	67.5	71.3	73.1	77.3	82.3	81.0	82.9	80.3	80.4	75.7	65.0	74.8
1986	64.2	69.2	68.1	71.6	77.6	80.8	82.1	82.9	82.5	79.4	78.4	72.0	75.7
1987	64.5	68.7	70.3	69.0	77.8	82.3	83.2	84.9	82.7	76.5	73.8	68.4	75.2
1988	66.4	65.7	69.1	74.6	76.7	81.0	82.2	82.5	83.1	77.9	75.0	68.4	75.2
1989	71.3	68.5	72.2	74.8	79.5	81.9	83.0	83.6	83.1	77.6	74.3	62.5	76.0
1990	72.3	73.8	73.2	73.9	79.7	82.2	83.3	83.7	82.7	80.1	73.5	71.3	77.5
1991	71.0	68.2	72.6	77.0	80.2	81.9	83.2	83.6	82.0	78.8	71.5	70.2	76.7
1992	65.3	68.8	69.7	72.5	75.9	80.6	83.4	82.1	81.7	77.8	75.5	69.5	75.2
1993	71.5	66.3	69.0	71.1	77.7	81.6	82.9	83.0	82.3	79.0	74.4	65.6	75.4
1994	68.0	71.7	71.0	77.0	78.7	81.7	81.9	81.4	80.6	77.8	74.8	69.4	76.2
1995	64.2	65.0	72.0	75.7	80.7	80.8	82.2	82.7	82.4	80.5	70.7	65.7	75.2
1996	65.7	64.3	67.8	73.3	79.3	80.7	83.5	82.0	82.1	77.8	72.9	68.5	74.8
1997	66.4	72.2	74.6	74.2	78.7	81.0	83.0	82.2	81.4	77.9	71.8	67.3	75.9
1998	68.3	66.7	68.2	74.6	79.3	84.5	84.0	84.2	82.5	80.2	74.3	71.6	76.5
1999	68.4	66.7	68.4	76.3	77.3	80.0	83.1	83.3	81.8	78.6	73.3	68.2	75.5
2000	65.5	67.3	72.9	73.3	79.4	81.6	82.7	83.2	82.0	76.3	70.5	67.2	75.2
POR= 62 YRS	66.0	67.0	70.3	73.9	77.8	80.9	82.5	82.7	81.6	77.8	72.3	67.9	75.1

HEATING DEGREE DAYS (base 65°F) 2000 WEST PALM BEACH, FL (PBI)

YEAR	JUL	AUG	SEP	OCT	NOV	DEC	JAN	FEB	MAR	APR	MAY	JUN	TOTAL
1971-72	0	0	0	0	0	0	4	48	0	0	0	0	52
1972-73	0	0	0	0	5	37	56	81	4	5	0	0	188
1973-74	0	0	0	0	2	104	0	65	1	2	0	0	174
1974-75	0	0	0	0	4	67	18	3	15	5	0	0	112
1975-76	0	0	0	0	40	74	132	56	4	0	0	0	306
1976-77	0	0	0	0	15	68	220	93	8	0	0	0	404
1977-78	0	0	0	0	18	77	161	148	41	0	0	0	445
1978-79	0	0	0	0	0	2	124	118	23	0	0	0	267
1979-80	0	0	0	0	11	46	96	153	50	2	0	0	358
1980-81	0	0	0	0	28	76	193	41	27	0	0	0	365
1981-82	0	0	0	0	33	116	86	2	4	0	0	0	241
1982-83	0	0	0	0	0	48	88	36	58	6	0	0	236
1983-84	0	0	0	0	14	82	85	60	46	4	0	0	291
1984-85	0	0	0	0	10	30	176	85	8	7	0	0	316
1985-86	0	0	0	0	6	102	93	28	67	0	0	0	296
1986-87	0	0	0	0	0	2	104	22	10	39	0	0	177
1987-88	0	0	0	0	8	42	62	68	39	0	0	0	219
1988-89	0	0	0	0	0	49	7	66	26	0	0	0	148
1989-90	0	0	0	8	2	146	14	7	0	1	0	0	178
1990-91	0	0	0	2	0	11	18	44	17	0	0	0	92
1991-92	0	0	0	0	23	10	73	21	22	4	0	0	153
1992-93	0	0	0	0	9	27	11	28	28	1	0	0	104
1993-94	0	0	0	0	11	63	46	14	20	0	0	0	154
1994-95	0	0	0	0	0	31	91	93	3	0	0	0	218
1995-96	0	0	0	0	16	115	105	105	62	6	0	0	409
1996-97	0	0	0	0	1	35	79	13	0	2	0	0	130
1997-98	0	0	0	0	8	75	36	56	55	0	0	0	230
1998-99	0	0	0	0	0	25	44	42	19	0	1	0	131
1999-00	0	0	0	0	0	56	76	35	0	1	0	0	168
2000-	0	0	0	0	12	74							

WBAN : 12844

COOLING DEGREE DAYS (base 65°F) 2000 WEST PALM BEACH, FL (PBI)

YEAR	JAN	FEB	MAR	APR	MAY	JUN	JUL	AUG	SEP	OCT	NOV	DEC	ANNUAL
1971	121	147	116	227	434	484	542	569	486	440	249	257	4072
1972	223	112	192	277	436	511	547	573	534	486	296	261	4448
1973	177	60	279	296	446	509	539	526	517	397	311	154	4211
1974	262	117	274	288	429	457	526	552	528	378	218	130	4159
1975	216	208	230	280	403	442	467	514	472	397	235	139	4003
1976	53	97	251	237	393	404	507	509	457	334	193	105	3540
1977	25	62	287	308	376	493	531	548	484	329	253	155	3851
1978	78	27	152	252	440	506	540	540	477	380	265	203	3860
1979	59	87	123	287	349	461	555	549	496	396	266	117	3745
1980	75	37	218	213	395	530	582	551	492	427	258	100	3878
1981	1	118	124	325	425	557	599	558	487	414	127	129	3864
1982	116	249	263	336	371	476	568	566	510	425	324	234	4438
1983	87	73	110	229	396	474	597	604	506	378	172	191	3817
1984	81	110	165	198	391	417	500	514	444	391	208	226	3645
1985	49	159	210	256	389	523	502	562	464	485	335	107	4041
1986	76	151	170	206	397	481	536	561	534	455	410	224	4201
1987	95	134	180	166	402	522	574	626	539	363	278	152	4031
1988	114	94	173	293	370	488	539	548	550	408	304	162	4043
1989	208	171	257	302	454	515	563	585	553	406	288	75	4377
1990	247	259	262	276	460	520	574	591	542	474	263	211	4679
1991	211	140	263	366	478	514	571	582	518	436	223	180	4482
1992	88	136	175	238	345	476	575	537	507	404	332	172	3985
1993	218	71	158	192	400	506	564	564	527	439	298	91	4028
1994	145	210	214	365	435	508	533	515	473	401	305	175	4279
1995	74	102	228	330	499	483	542	558	528	490	196	141	4171
1996	136	93	155	263	451	478	579	534	519	405	246	153	4012
1997	128	223	305	285	431	490	564	541	500	408	218	154	4247
1998	145	108	163	298	449	594	596	602	533	481	285	237	4491
1999	154	95	131	343	390	458	569	574	512	429	256	160	4071
2000	99	106	250	259	454	508	556	572	514	357	183	150	4008

SNOWFALL (inches) 2000 WEST PALM BEACH, FL (PBI)

YEAR	JUL	AUG	SEP	OCT	NOV	DEC	JAN	FEB	MAR	APR	MAY	JUN	TOTAL
1971-72	0.0	0.0	0.0	0.0	0.0	0.0	0.0	0.0	0.0	0.0	0.0	0.0	0.0
1972-73	0.0	0.0	0.0	0.0	0.0	0.0	0.0	0.0	0.0	0.0	0.0	0.0	0.0
1973-74	0.0	0.0	0.0	0.0	0.0	0.0	0.0	0.0	0.0	0.0	0.0	0.0	0.0
1974-75	0.0	0.0	0.0	0.0	0.0	0.0	0.0	0.0	0.0	0.0	0.0	0.0	0.0
1975-76	0.0	0.0	0.0	0.0	0.0	0.0	0.0	0.0	0.0	0.0	0.0	0.0	0.0
1976-77	0.0	0.0	0.0	0.0	0.0	0.0	T	0.0	0.0	0.0	0.0	0.0	T
1977-78	0.0	0.0	0.0	0.0	0.0	0.0	0.0	0.0	0.0	0.0	0.0	0.0	0.0
1978-79	0.0	0.0	0.0	0.0	0.0	0.0	0.0	0.0	0.0	0.0	0.0	0.0	0.0
1979-80	0.0	0.0	0.0	0.0	0.0	0.0	0.0	0.0	0.0	0.0	0.0	0.0	0.0
1980-81	0.0	0.0	0.0	0.0	0.0	0.0	0.0	0.0	0.0	0.0	0.0	0.0	0.0
1981-82	0.0	0.0	0.0	0.0	0.0	0.0	0.0	0.0	0.0	0.0	0.0	0.0	0.0
1982-83	0.0	0.0	0.0	0.0	0.0	0.0	0.0	0.0	0.0	0.0	0.0	0.0	0.0
1983-84	0.0	0.0	0.0	0.0	0.0	0.0	0.0	0.0	0.0	0.0	0.0	0.0	0.0
1984-85	0.0	0.0	0.0	0.0	0.0	0.0	0.0	0.0	0.0	0.0	0.0	0.0	0.0
1985-86	0.0	0.0	0.0	0.0	0.0	0.0	0.0	0.0	0.0	0.0	0.0	0.0	0.0
1986-87	0.0	0.0	0.0	0.0	0.0	0.0	0.0	0.0	0.0	0.0	0.0	0.0	0.0
1987-88	0.0	0.0	0.0	0.0	0.0	0.0	0.0	0.0	0.0	0.0	0.0	0.0	0.0
1988-89	0.0	0.0	0.0	0.0	0.0	0.0	0.0	0.0	0.0	0.0	0.0	0.0	0.0
1989-90	0.0	0.0	0.0	0.0	0.0	0.0	0.0	0.0	0.0	0.0	0.0	0.0	0.0
1990-91	0.0	0.0	0.0	0.0	0.0	0.0	0.0	0.0	0.0	0.0	0.0	0.0	0.0
1991-92	0.0	0.0	0.0	0.0	0.0	0.0	0.0	0.0	0.0	0.0	0.0	0.0	0.0
1992-93	0.0	0.0	0.0	0.0	0.0	0.0	0.0	0.0	0.0	0.0	0.0	0.0	0.0
1993-94	0.0	T	0.0	0.0	0.0	0.0	0.0	0.0	T	0.0	0.0	0.0	T
1994-95	0.0	0.0	0.0	0.0	0.0	0.0	0.0	0.0	0.0	0.0	0.0	0.0	0.0
1995-96	0.0	0.0	0.0	0.0	0.0	0.0	0.0	0.0	0.0	0.0	0.0	0.0	0.0
1996-97										0.0	0.0	0.0	
1997-98	0.0	0.0	0.0	0.0	0.0	0.0	0.0	0.0	0.0	0.0	0.0	0.0	0.0
1998-99	0.0	0.0	0.0	0.0	0.0	0.0	0.0	0.0	0.0	0.0	0.0	0.0	0.0
1999-00	0.0	0.0	0.0	0.0	0.0	0.0	0.0	0.0	0.0	0.0	0.0	0.0	0.0
2000-	0.0	0.0	0.0	0.0	0.0	0.0	0.0	0.0	0.0	0.0	0.0	0.0	0.0
POR= 55 YRS	0.0	T	0.0	0.0	0.0	0.0	T	0.0	T	0.0	0.0	0.0	T

WBAN : 12844

REFERENCE NOTES:

<p>PAGE 1: THE TEMPERATURE GRAPH SHOWS NORMAL MAXIMUM AND NORMAL MINIMUM DAILY TEMPERATURES (SOLID CURVES) AND THE ACTUAL DAILY HIGH AND LOW TEMPERATURES (VERTICAL BARS).</p> <p>PAGE 2 AND 3: H/C INDICATES HEATING AND COOLING DEGREE DAYS. RH INDICATES RELATIVE HUMIDITY W/O INDICATES WEATHER AND OBSTRUCTIONS S INDICATES SUNSHINE. PR INDICATES PRESSURE. CLOUDINESS ON PAGE 3 IS THE SUM OF THE CEILOMETER AND SATELLITE DATA NOT TO EXCEED EIGHT EIGHTHS(OKTAS).</p> <p>GENERAL: T INDICATES TRACE PRECIPITATION, AN AMOUNT GREATER THAN ZERO BUT LESS THAN THE LOWEST REPORTABLE VALUE. + INDICATES THE VALUE ALSO OCCURS ON EARLIER DATES. BLANK ENTRIES DENOTE MISSING OR UNREPORTED DATA. NORMALS ARE 30-YEAR AVERAGES (1961 - 1990). ASOS INDICATES AUTOMATED SURFACE OBSERVING SYSTEM. PM INDICATES THE LAST DAY OF THE PREVIOUS MONTH. POR (PERIOD OF RECORD) BEGINS WITH THE JANUARY DATA MONTH AND IS THE NUMBER OF YEARS USED TO COMPUTE THE MEAN. INDIVIDUAL MONTHS WITHIN THE POR MAY BE MISSING. WHEN THE POR FOR A NORMAL IS LESS THAN 30 YEARS, THE NORMAL IS PROVISIONAL AND IS BASED ON THE NUMBER OF YEARS INDICATED. 0.* OR * INDICATES THE VALUE OR MEAN-DAYS-WITH IS BETWEEN 0.00 AND 0.05. CLOUDINESS FOR ASOS STATIONS DIFFERS FROM THE NON-ASOS OBSERVATION TAKEN BY A HUMAN OBSERVER. ASOS STATION CLOUDINESS IS BASED ON TIME-AVERAGED CEILOMETER DATA FOR CLOUDS AT OR BELOW 12,000 FEET AND ON SATELLITE DATA FOR CLOUDS ABOVE 12,000 FEET. THE NUMBER OF DAYS WITH CLEAR, PARTLY CLOUDY, AND CLOUDY CONDITIONS FOR ASOS STATIONS IS THE SUM OF THE CEILOMETER AND SATELLITE DATA FOR THE SUNRISE TO SUNSET PERIOD.</p>	<p>GENERAL CONTINUED: CLEAR INDICATES 0 - 2 OKTAS, PARTLY CLOUDY INDICATES 3 - 6 OKTAS, AND CLOUDY INDICATES 7 OR 8 OKTAS. WHEN AT LEAST ONE OF THE ELEMENTS (CEILOMETER OR SATELLITE) IS MISSING, THE DAILY CLOUDINESS IS NOT COMPUTED. WIND DIRECTION IS RECORDED IN TENS OF DEGREES (2 DIGITS) CLOCKWISE FROM TRUE NORTH. "00" INDICATES CALM. "36" INDICATES TRUE NORTH. RESULTANT WIND IS THE VECTOR AVERAGE OF THE SPEED AND DIRECTION. AVERAGE TEMPERATURE IS THE SUM OF THE MEAN DAILY MAXIMUM AND MINIMUM TEMPERATURE DIVIDED BY 2. SNOWFALL DATA COMPRISE ALL FORMS OF FROZEN PRECIPITATION, INCLUDING HAIL. A HEATING (COOLING) DEGREE DAY IS THE DIFFERENCE BETWEEN THE AVERAGE DAILY TEMPERATURE AND 65° F. DRY BULB IS THE TEMPERATURE OF THE AMBIENT AIR. DEW POINT IS THE TEMPERATURE TO WHICH THE AIR MUST BE COOLED TO ACHIEVE 100 PERCENT RELATIVE HUMIDITY. WET BULB IS THE TEMPERATURE THE AIR WOULD HAVE IF THE MOISTURE CONTENT WAS INCREASED TO 100 PERCENT RELATIVE HUMIDITY.</p> <p>ON JULY 1, 1996, THE NATIONAL WEATHER SERVICE BEGAN USING THE "METAR" OBSERVATION CODE THAT WAS ALREADY EMPLOYED BY MOST OTHER NATIONS OF THE WORLD. THE MOST NOTICEABLE DIFFERENCE IN THIS ANNUAL PUBLICATION WILL BE THE CHANGE IN UNITS FROM TENTHS TO EIGHTS(OKTAS) FOR REPORTING THE AMOUNT OF SKY COVER.</p>
---	--

2000  
WEST PALM BEACH,  
FLORIDA (PBI)

West Palm Beach and Palm Beach, both located on the coastal sand ridge of southeastern Florida, are separated by Lake Worth, a portion of the Inland Waterway. The entire coastal ridge is only about 5 miles wide and in early times the Everglades reached to its western edge. Now most of the swampland has been drained and is devoted to agriculture, the peat-like coastal soil being very fertile when fortified with certain lacking minerals. The Atlantic Ocean forms the eastern edge of Palm Beach, and the Gulf Stream flows northward about 2 miles offshore, its nearest approach to the Florida coast.

Because of its southerly location and marine influences, the Palm Beach area has a notably equable climate. Cold continental air must either travel over water or flow down the Florida Peninsula to reach the area, and in either case its cold is appreciably modified. Actually, the coldest weather, with infrequent frosts, is experienced the second or third night after the arrival of the cold air, due to the loss of heat through radiation cooling. The frequency of temperatures as low as the freezing mark is about one per three years at the National Weather Service Office, but in the farmlands farther from the coast the frequency of light freezes is much higher.

Summer temperatures are tempered by the ocean breeze, and by the frequent formation of cumulus clouds, which shade the land somewhat without completely obscuring the sun. Temperatures of 89 degrees or higher have occurred in all months of the year, but the 100 degree mark has rarely occurred. August is the warmest month and has an average maximum temperature of about 90 degrees. The occurrence of 90 degree temperatures in August is so common that such can be expected on more than two-thirds of the days. However, temperatures as high as 100 degrees rarely occur.

The moist, unstable air in this area results in frequent showers, usually of short duration. Thunderstorms are frequent during the summer, occurring every other day. Rainfall is heaviest during the summer and fall, the fall rainfall occurring from occasional heavy rains accompanying tropical disturbances. High winds, associated with hurricanes, have been estimated at about 140 mph in the city.

Flying weather is usually very good in this area, with instrument weather occurring only rarely. Heavy fog occurs on an average of only one morning a month in the winter and spring, and almost never in the summer and fall.

# STATION LOCATION

WEST PALM BEACH, FLORIDA

LOCATION	Occupied From	Occupied To	Airline Distances and Directions from previous Location	LATITUDE NORTH	LONGITUDE WEST	ELEVATION ABOVE										AUTOMATIC OBSERVING EQUIPMENT *	* TYPE M = AMOS T = AUTOB S = ASOS W = AWOS  REMARKS
						GROUND											
						SEA LEVEL	GROUND	WIND INSTRUMENT	EXTREME THERMOMETER	PSYCHROMETER	SUNSHINE SWITCH	TIPPING GAUGE	RAINING GAUGE	8 INCH RAIN GAGE	HYGROMETER		
*NOTES																	
<b>AIRPORT</b>																	
Morrison Field South side, 4.5 miles SW of Post Office	6/24/38	8/16/46		26°41'	80°06'	15	26	5	5				5	3			CAA Station established. Weather Bureau effective 10/15/45.
Morrison Field South side	8/16/46	2/17/48	250 ft. SSW	26°41'	80°06'	15	26	5	5				5	3			Building moved.
Morrison Field North side	2/17/48	4/27/53	5/8 mi. N	26°41'	80°06'	18	41	5	5				5	3			
Palm Beach Int'l AP South side	4/27/53	3/1/77	5/8 mi. S	26°41'	80°06'	15	a22	c18	c18				18		b4		Office moved to new location and name of airport changed. a - 69 feet to 3/1/59. b - Commissioned 2/1/64 on field 2110 feet west of thermometer site. c - Removed prior to 12/1966. d - Added as standby 9/1/74. e - Same site as prior to 3/1/77. f - Minor adjustment & type change 3/3/86. g - Effective 3/3/86. h - Raised 4/21/86.
National Weather Svc. Bldg., Palm Beach International Airport	3/1/77	04/01/93	0.9 mi. W	26°41'	80°07'	15	e22	g19	h33	5	5	NA	3	3	NA	e4	NA
Palm Beach Int'l AP	04/01/93	Present	NA	26°41'	80°06'	22									S		ASOS commissioned 04/01/93

SUBSCRIPTION: Price and ordering information available through : National ClimaticDataCenter, Federal building, Asheville, North Carolina 28801.

**INQUIRIES/COMMENTS CALL: Toll Free (866) 742-3322**

OFFICAL BUSINESS  
PENALTY FOR PRIVATE USE \$300  
CHANGE SERVICE REQUESTED

**FIRST CLASS**  
**POSTAGE & FEES PAID**  
United States Department of Commerce  
NOAA Permit No. G - 19

NCDC Subscription Services Center  
310 State Route 956 Building 300  
Rocket Center, WV 26726

\* NOTES: For earlier station history see previous edition.