

2002

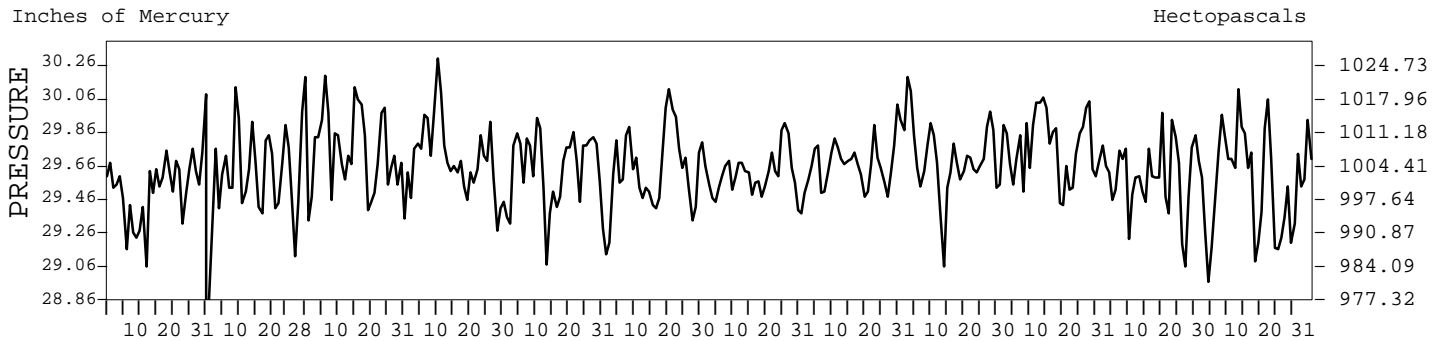
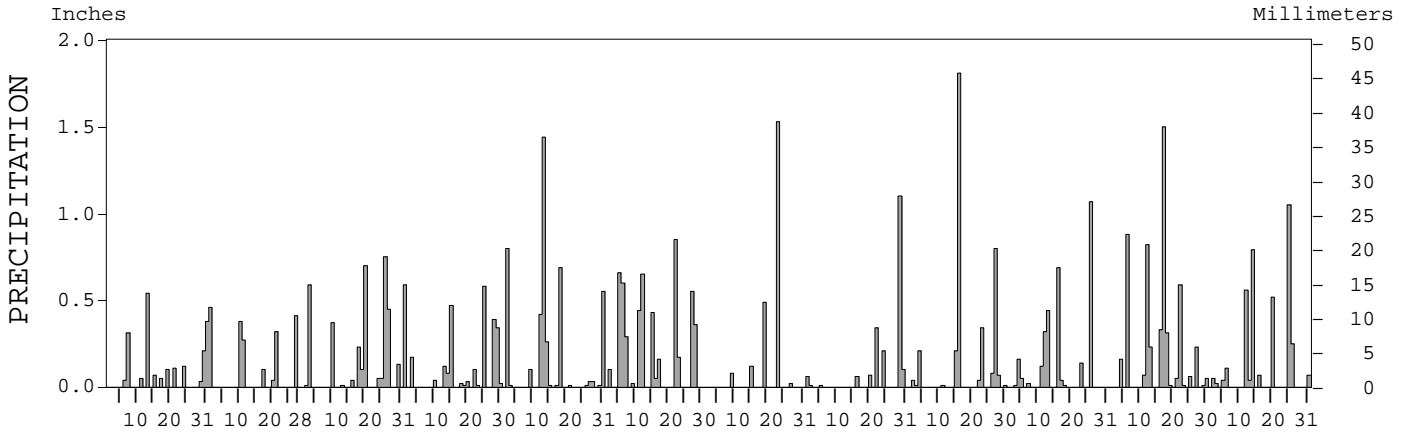
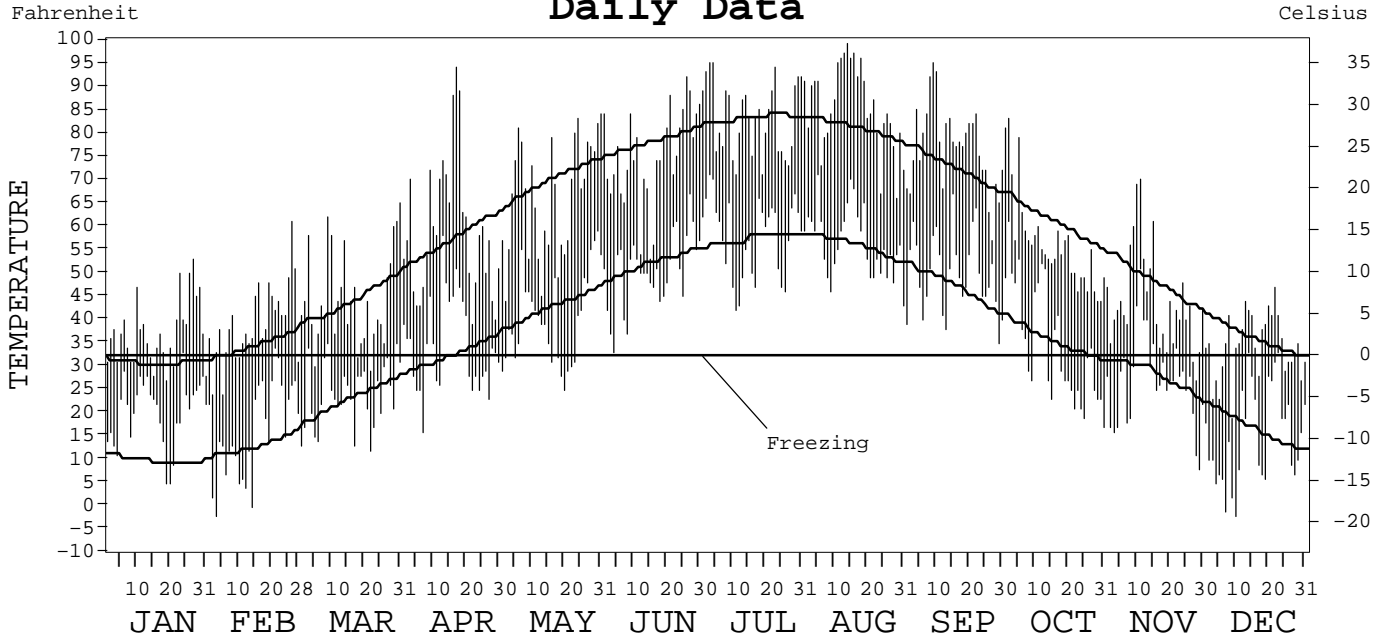
LOCAL CLIMATOLOGICAL DATA ANNUAL SUMMARY WITH COMPARATIVE DATA



ISSN 0198-3369

CONCORD,
NEW HAMPSHIRE (CON)

Daily Data



I CERTIFY THAT THIS IS AN OFFICIAL PUBLICATION OF THE NATIONAL OCEANIC AND ATMOSPHERIC ADMINISTRATION, AND IS COMPILED FROM RECORDS ON FILE AT THE NATIONAL CLIMATIC DATA CENTER.

Thomas R. Karl

NATIONAL OCEANIC AND ATMOSPHERIC ADMINISTRATION	NATIONAL ENVIRONMENTAL SATELLITE, DATA, AND INFORMATION SERVICE	NATIONAL CLIMATIC DATA CENTER ASHEVILLE, NORTH CAROLINA	DIRECTOR NATIONAL CLIMATIC DATA CENTER
---	---	---	---

METEOROLOGICAL DATA FOR 2002

CONCORD, NH (CON)

LATITUDE: 43° 11' 43" N LONGITUDE: 71° 30' 04" W ELEVATION (FT): GRND: 340 BARO: 343 TIME ZONE: EASTERN (UTC + 5) WBAN: 14745

ELEMENT		JAN	FEB	MAR	APR	MAY	JUN	JUL	AUG	SEP	OCT	NOV	DEC	YEAR	
TEMPERATURE °F	MEAN DAILY MAXIMUM	37.2	39.1	44.6	59.2	66.4	75.0	83.1	85.5	76.9	56.4	44.1	34.4	58.5	
	HIGHEST DAILY MAXIMUM	53	61	65	94	84	92	95	99	95	83	70	47	99	
	DATE OF OCCURRENCE	27	26	31	17	31	26	03+	14	09	02	11	22	AUG 14	
	MEAN DAILY MINIMUM	20.3	16.4	23.9	34.5	40.3	50.4	57.7	56.5	49.8	34.4	27.0	15.2	35.5	
	LOWEST DAILY MINIMUM	5	-2	12	16	25	33	42	43	35	17	8	-2	-2	
	DATE OF OCCURRENCE	20+	03	22	07	20	44	11	31	29	31	29	10	DEC 10	
	AVERAGE DRY BULB	28.8	27.8	34.3	46.9	53.4	62.7	70.4	71.0	63.4	45.4	35.6	24.8	47.0	
	MEAN WET BULB	26.8		30.7	41.1	47.1			62.9	58.4	42.4	33.7	23.1		
	MEAN DEW POINT	21.8		22.9	33.5	39.3			57.8	54.6	37.7	29.3	16.8		
	NUMBER OF DAYS WITH:														
	MAXIMUM ≥ 90°	0	0	0	1	0	1	7	13	3	0	0	0	0	25
	MAXIMUM ≤ 32°	9	5	3	0	0	0	0	0	0	0	2	11	30	
	MINIMUM ≤ 32°	30	27	28	14	10	0	0	0	0	17	24	29	179	
MINIMUM ≤ 0°	0	2	0	0	0	0	0	0	0	0	0	2	4		
H/C	HEATING DEGREE DAYS	1116	1038	943	551	370	123	26	20	111	608	876	1238	7020	
	COOLING DEGREE DAYS	0	0	0	14	15	60	205	212	71	8	0	0	585	
RH	MEAN (PERCENT)	75	68	67	66	64	73	72	68	77	76	79	72	71	
	HOUR 01 LST	81	74	78	81	81	89	92	89	93	90	84	79	84	
	HOUR 07 LST	82	82	78	76	73	82	81	83	91	91	89	80	82	
	HOUR 13 LST	64	54	53	48	45	55	50	42	54	57	65	59	54	
	HOUR 19 LST	73	62	61	63	57	67	65	63	74	77	77	69	67	
S	PERCENT POSSIBLE SUNSHINE														
W/O	NUMBER OF DAYS WITH:														
	HEAVY FOG (VISBY ≤ 1/4 MI)	6	5	8	4	4	2	2	0	5	1	10	5	52	
	THUNDERSTORMS	0	0	0	2	4	7	3	6	1	0	0	0	23	
CLOUDINESS	SUNRISE-SUNSET: (OKTAS)														
	CEILOMETER (≤ 12,000 FT.)														
	SATELLITE (> 12,000 FT.)														
	MIDNIGHT-MIDNIGHT: (OKTAS)														
	CEILOMETER (≤ 12,000 FT.)														
SATELLITE (> 12,000 FT.)															
NUMBER OF DAYS WITH:															
CLEAR															
PARTLY CLOUDY															
CLOUDY															
PR	MEAN STATION PRESS. (IN.)	29.52		29.74	29.68	29.61	29.62	29.58	29.69	29.68	29.74	29.54	29.57		
	MEAN SEA-LEVEL PRESS. (IN.)	29.90		30.13		29.99	29.99		30.06	30.05	30.12	29.92	29.96		
WINDS	RESULTANT SPEED (MPH)	2.9		2.5	2.1	1.9	1.1		1.5	1.2	1.9	2.5	4.6		
	RES. DIR. (TENS OF DEGS.)	29		29	30	26	26		30	29	32	31	32		
	MEAN SPEED (MPH)	5.4	6.2	6.9	7.1	7.5	5.5	5.1	4.8	4.9	5.1	5.9	6.8	5.9	
	PREVAIL. DIR. (TENS OF DEGS.)	30	32	30	33	30	17	33	32	18	34	33	33	33	
	MAXIMUM 2-MINUTE WIND:														
	SPEED (MPH)	33	26	31	29	38	29	33	26	33	29	29	35	38	
	DIR. (TENS OF DEGS.)	31	32	29	28	29	32	31	32	32	08	30	31	29	
	DATE OF OCCURRENCE	13	11	22	01	03	11+	23	06	11	16	23+	01	MAY 03	
	MAXIMUM 5-SECOND WIND:														
	SPEED (MPH)	41	36	45	35	47	47	50	36	47	39	38	41	50	
DIR. (TENS OF DEGS.)	30	30	26	30	30	22	31	32	33	06	31	31	31		
DATE OF OCCURRENCE	13	01	10	01	15	17	23	06	11	16	23	01	JUL 23		
PRECIPITATION	WATER EQUIVALENT:														
	TOTAL (IN.)	2.01	1.98	3.48	2.97	4.38	5.33	2.24	1.96	3.63	3.07	5.31	3.57	39.93	
	GREATEST 24-HOUR (IN.)	0.54	0.65	1.20	0.59	1.59	1.09	1.53	1.20	2.02	1.07	1.50	0.83	2.02	
	DATE OF OCCURRENCE	13	10-11	26-27	01	13-14	11-12	23	29-30	15-16	26	17	13-14	SEP 15-16	
	NUMBER OF DAYS WITH:														
	PRECIPITATION ≥ 0.01	12	7	13	15	15	14	5	9	12	12	16	12	142	
PRECIPITATION ≥ 0.10	7	6	8	8	7	12	3	4	5	7	9	6	82		
PRECIPITATION ≥ 1.00	0	0	0	0	1	0	1	1	1	1	1	1	7		
SNOWFALL	SNOW, ICE PELLETS, HAIL:														
	TOTAL (IN.)	14.4	0.8	12.6	1.0	0.0	0.0	0.0	0.0	0.0	1.4	6.8	18.7	55.7	
	GREATEST 24-HOUR (IN.)	4.0	0.4	6.6	1.0	0.0	0.0	0.0	0.0	0.0	1.4	2.3	9.2	9.2	
	DATE OF OCCURRENCE	06-07	13+	19-20	25						23	16	25	DEC 25	
	MAXIMUM SNOW DEPTH (IN.)	6	4	7	1	0	0	0	0	0	1	3	12	12	
	DATE OF OCCURRENCE	23+	15+	21	26						23	21+	26	DEC 26	
	NUMBER OF DAYS WITH:														
SNOWFALL ≥ 1.0	5	0	4	1	0	0	0	0	0	1	3	5	19		

PRECIPITATION (inches) 2002 CONCORD, NH (CON)

YEAR	JAN	FEB	MAR	APR	MAY	JUN	JUL	AUG	SEP	OCT	NOV	DEC	ANNUAL
1973	2.44	1.91	2.58	4.55	4.20	4.86	1.05	6.88	1.77	2.46	1.82	7.52	42.04
1974	2.80	2.32	3.98	2.58	3.74	1.82	1.41	2.20	4.74	1.64	3.20	4.02	34.45
1975	4.12	2.36	3.12	2.47	1.22	3.87	3.71	3.94	5.15	4.29	4.91	3.12	42.28
1976	3.40	2.36	2.02	2.43	3.90	2.74	3.20	2.66	2.73	4.05	0.75	2.27	32.51
1977	2.16	2.02	4.51	4.04	2.44	3.47	1.26	3.51	5.64	5.52	3.07	4.00	41.64
1978	6.32	0.67	2.16	2.06	2.67	3.18	1.08	2.87	0.46	2.72	1.77	2.91	28.87
1979	8.09	2.29	2.85	3.10	4.86	0.64	3.45	4.20	3.15	3.79	2.92	1.93	41.27
1980	0.43	0.78	3.37	3.72	0.86	2.83	2.35	3.99	2.19	2.63	3.12	0.79	27.06
1981	0.48	7.77	0.86	3.12	3.21	2.81	5.54	3.25	4.61	6.51	3.51	4.17	45.84
1982	3.98	2.88	2.47	3.08	1.91	7.84	2.83	2.54	1.85	1.52	2.93	0.91	34.74
1983	3.92	2.17	7.07	5.88	5.19	2.52	2.07	2.07	1.21	3.28	7.36	5.35	48.09
1984	1.89	5.06	2.92	3.74	9.52	2.83	4.44	0.97	1.08	4.42	2.67	2.70	42.24
1985	0.95	1.99	2.86	1.02	2.05	3.05	2.83	2.51	3.78	3.62	4.58	1.65	30.89
1986	4.78	2.23	3.58	1.85	1.44	4.95	4.77	3.72	2.27	1.71	4.48	4.50	40.28
1987	3.00	0.03	3.47	4.71	1.08	5.77	3.77	2.84	3.94	4.14	2.50	1.55	36.80
1988	1.97	2.24	1.32	2.75	3.35	0.80	6.53	5.44	1.56	1.23	5.06	1.05	33.30
1989	0.74	2.05	2.18	3.40	5.11	4.25	3.62	3.55	4.22	4.86	3.34	0.91	38.23
1990	2.82	2.63	1.64	3.00	5.09	2.51	1.79	7.19	2.31	4.93	3.25	4.12	41.28
1991	1.85	1.42	3.01	2.61	2.51	1.72	1.80	7.26	5.52	3.32	4.84	3.62	39.48
1992	1.97	1.30	2.77	1.78	2.39	3.28	3.50	2.13	2.48	2.41	3.54	2.23	29.78
1993	1.51	1.63	3.04	3.77	0.97	1.95	2.10	1.97	4.01	3.58	3.72	3.36	31.61
1994	3.48	0.80	5.03	2.38	4.33	1.94	4.02	2.85	3.55	0.91	2.67	4.19	36.15
1995	3.39	2.03	2.46	1.64	3.56	1.36	4.01	2.42	2.70	7.31	5.58	1.95	38.41
1996	4.87	2.58	1.55	6.11	4.81	3.09	5.17	0.06	3.05	8.11	2.06	5.84	47.30
1997	3.29	2.20	4.04	3.66	2.29	0.70	3.80	3.67	1.68	1.44	5.63	1.95	34.35
1998	3.62	2.85	3.70	2.21	3.97	7.95	1.90	1.41	1.63	3.58	2.20	0.92	35.94
1999	5.38	2.84	2.82	0.83	2.79	1.94	4.35	3.45	9.44	2.47	2.66	1.35	40.32
2000	2.26	2.83	3.34	4.82	2.89	3.14	4.33	1.89	3.54	2.29	3.42	2.99	37.74
2001	1.44	2.57	6.44	0.84	2.33	5.74	3.29	0.67	3.51	0.99	1.10	2.24	31.16
2002	2.01	1.98	3.48	2.97	4.38	5.33	2.24	1.96	3.63	3.07	5.31	3.57	39.93
POR= 148 YRS	2.91	2.58	3.11	2.99	3.18	3.31	3.52	3.35	3.34	3.19	3.40	3.00	37.88

WBAN : 14745

AVERAGE TEMPERATURE (°F) 2002 CONCORD, NH (CON)

YEAR	JAN	FEB	MAR	APR	MAY	JUN	JUL	AUG	SEP	OCT	NOV	DEC	ANNUAL
1973	21.0	20.2	35.5	45.0	52.9	66.9	70.3	72.3	58.8	48.2	36.1	28.9	46.3
1974	21.4	21.1	31.8	45.8	51.1	62.8	67.5	67.0	58.9	42.5	35.9	26.7	44.4
1975	21.6	21.5	30.1	40.4	61.3	65.0	72.9	66.5	56.1	47.6	39.9	21.9	45.4
1976	10.9	24.7	31.9	46.7	53.6	68.9	66.8	65.3	57.2	45.0	31.7	16.1	43.2
1977	10.6	20.5	36.7	45.1	58.3	62.9	69.0	68.0	58.5	47.0	39.4	21.0	44.8
1978	17.5	13.5	28.0	40.6	57.5	65.2	69.7	69.6	55.9	46.7	35.3	22.7	43.5
1979	23.3	15.1	37.6	44.2	56.3	63.8	71.2	67.5	59.8	47.4	42.2	29.4	46.5
1980	22.4	19.1	31.8	44.4	55.6	62.8	70.6	68.4	58.2	45.1	34.8	19.2	44.4
1981	12.5	30.8	34.2	47.1	57.5	66.1	69.9	66.6	58.7	45.2	37.8	25.4	46.0
1982	10.9	20.8	30.2	41.6	57.3	60.9	69.5	65.4	60.2	47.6	41.7	32.4	44.9
1983	23.1	26.1	35.9	45.2	53.1	65.1	70.1	69.3	62.3	48.2	39.4	23.4	46.8
1984	16.0	30.5	28.2	44.6	52.9	65.9	68.7	69.3	57.8	50.4	38.3	30.3	46.1
1985	15.9	25.8	35.7	45.2	56.1	62.2	70.3	66.7	60.5	49.2	38.5	22.0	45.7
1986	23.0	21.3	35.5	48.2	57.5	61.3	67.3	66.1	57.3	47.4	34.1	29.0	45.7
1987	20.0	22.0	34.5	46.8	56.7	64.4	70.6	65.1	58.7	45.8	36.9	28.1	45.8
1988	18.5	23.5	33.4	43.9	57.3	62.9	72.6	70.5	57.8	44.9	39.1	23.2	45.6
1989	25.7	22.6	31.8	41.4	58.3	65.0	69.5	67.7	60.8	49.1	35.8	11.9	45.0
1990	28.6	24.6	34.7	45.6	52.8	65.3	70.8	69.8	59.7	51.8	40.1	30.9	47.9
1991	20.2	28.3	36.0	47.6	60.2	65.6	69.2	69.9	57.7	50.8	39.7	25.5	47.6
1992	23.3	26.0	30.2	42.5	55.0	64.0	66.0	67.1	59.7	44.9	35.6	26.5	45.1
1993	23.5	15.7	30.5	45.7	56.9	64.9	71.4	70.0	58.8	45.3	36.4	26.8	45.5
1994	11.3	16.7	31.9	45.8	54.4	67.9	73.4	66.4	58.2	49.3	41.5	30.6	45.6
1995	28.1	20.7	36.0	41.5	55.1	66.1	73.0	69.4	56.9	52.0	34.2	22.9	46.3
1996	21.2	23.4	29.6	43.9	53.7	65.2	68.4	69.3	60.6	46.3	33.4	31.3	45.5
1997	21.8	28.3	29.8	42.3	51.6	65.9	69.1	68.1	59.8	46.8	36.2	28.0	45.6
1998	27.3	30.9	36.8	46.3	59.2	64.3	69.8	69.6	61.2	49.4	39.0	31.1	48.7
1999	20.7	27.8	34.5	44.9	57.0	68.4	71.7	67.2	63.4	46.3	41.9	29.7	47.8
2000	20.1	25.4	38.5	45.4	55.2	65.1	67.2	67.4	58.6	49.2	38.4	22.5	46.1
2001	19.5	23.5	29.4	44.0	56.4	66.7	66.6	72.1	60.3	49.2	40.8	32.1	46.7
2002	28.8	27.8	34.3	46.9	53.4	62.7	70.4	71.0	63.4	45.4	35.6	24.8	47.0
POR= 132 YRS	21.2	22.9	32.2	44.4	56.1	64.8	70.0	67.3	59.6	48.8	37.5	25.5	45.9

HEATING DEGREE DAYS (base 65°F) 2002 CONCORD, NH (CON)

YEAR	JUL	AUG	SEP	OCT	NOV	DEC	JAN	FEB	MAR	APR	MAY	JUN	TOTAL
1973-74	15	9	244	518	860	1112	1345	1223	1025	573	432	99	7455
1974-75	34	26	213	694	865	1182	1339	1218	1075	730	152	98	7626
1975-76	10	78	260	532	747	1330	1672	1162	1019	565	356	60	7791
1976-77	37	84	234	615	992	1506	1683	1242	870	594	259	119	8235
1977-78	37	58	222	551	760	1360	1466	1435	1138	725	270	72	8094
1978-79	45	34	275	563	882	1304	1284	1392	841	617	280	99	7616
1979-80	33	64	199	546	675	1098	1317	1324	1022	610	290	123	7301
1980-81	13	33	245	611	899	1417	1626	953	951	530	267	40	7585
1981-82	12	43	192	608	810	1222	1674	1233	1072	695	246	136	7943
1982-83	25	66	169	535	692	1007	1291	1086	895	588	364	82	6800
1983-84	14	33	167	521	760	1283	1516	993	1135	607	382	85	7496
1984-85	19	27	238	446	792	1072	1514	1092	901	588	286	106	7081
1985-86	9	38	166	485	785	1326	1295	1216	907	499	267	140	7133
1986-87	41	67	251	538	919	1109	1390	1199	939	542	296	77	7368
1987-88	18	89	201	589	837	1138	1436	1194	971	626	254	137	7490
1988-89	19	60	219	622	769	1289	1211	1182	1022	703	219	80	7395
1989-90	6	53	169	484	865	1639	1121	1121	933	585	369	67	7412
1990-91	22	15	183	409	737	1049	1381	1024	893	517	186	58	6474
1991-92	19	7	238	438	754	1216	1286	1123	1070	669	319	90	7229
1992-93	52	33	203	617	875	1190	1277	1372	1062	574	248	85	7588
1993-94	6	15	229	600	851	1177	1661	1345	1021	568	338	50	7861
1994-95	1	54	210	479	699	1059	1137	1235	893	697	309	46	6819
1995-96	6	17	257	397	918	1298	1352	1198	1093	625	358	54	7573
1996-97	10	6	171	572	943	1038	1334	1023	1086	675	409	83	7350
1997-98	16	18	178	560	858	1138	1161	950	870	554	186	91	6580
1998-99	5	15	144	475	773	1044	1365	1037	940	598	249	51	6696
1999-00	10	38	116	571	687	1087	1387	1142	815	583	316	98	6850
2000-01	20	26	217	486	790	1310	1403	1157	1095	627	276	68	7475
2001-02	43	1	167	484	719	1011	1116	1038	943	551	370	123	6566
2002-	26	20	111	608	876	1238							

WBAN : 14745

COOLING DEGREE DAYS (base 65°F) 2002 CONCORD, NH (CON)

YEAR	JAN	FEB	MAR	APR	MAY	JUN	JUL	AUG	SEP	OCT	NOV	DEC	ANNUAL
1973	0	0	0	3	2	145	184	242	67	2	0	0	645
1974	0	0	0	3	9	40	118	92	40	0	0	0	302
1975	0	0	0	0	48	108	263	134	0	0	0	0	553
1976	0	0	0	18	9	184	100	99	8	1	0	0	419
1977	0	0	0	5	57	64	168	156	38	0	0	0	488
1978	0	0	0	0	46	83	198	186	8	0	0	0	521
1979	0	0	0	1	15	69	232	150	46	6	0	0	519
1980	0	0	0	0	5	64	193	145	51	0	0	0	458
1981	0	0	0	0	38	80	172	101	11	0	0	0	402
1982	0	0	0	0	11	17	171	87	31	0	0	0	317
1983	0	0	0	0	2	93	179	172	93	5	0	0	544
1984	0	0	0	0	15	117	139	165	28	0	0	0	464
1985	0	0	0	0	16	27	184	93	36	1	0	0	357
1986	0	0	0	0	44	37	118	109	23	0	0	0	331
1987	0	0	0	1	45	64	198	96	21	0	0	0	425
1988	0	0	0	0	19	81	262	238	7	4	0	0	611
1989	0	0	0	0	17	87	153	141	50	0	0	0	448
1990	0	0	0	10	0	80	210	170	30	8	0	0	508
1991	0	0	0	2	44	84	157	166	29	4	0	0	486
1992	0	0	0	2	15	66	90	105	52	0	0	0	330
1993	0	0	0	0	7	90	212	176	49	0	0	0	534
1994	0	0	0	0	18	143	269	104	11	0	0	0	545
1995	0	0	0	0	9	84	264	159	22	0	0	0	538
1996	0	0	0	2	15	65	122	149	48	0	0	0	401
1997	0	0	0	0	2	113	149	119	28	3	0	0	414
1998	0	0	5	0	13	80	157	165	36	0	0	0	456
1999	0	0	0	0	9	157	228	112	76	0	0	0	582
2000	0	0	0	0	20	106	93	107	32	0	0	0	358
2001	0	0	0	5	18	123	101	226	32	0	0	0	505
2002	0	0	0	14	15	60	205	212	71	8	0	0	585

SNOWFALL (inches) 2002 CONCORD, NH (CON)

YEAR	JUL	AUG	SEP	OCT	NOV	DEC	JAN	FEB	MAR	APR	MAY	JUN	TOTAL
1973-74	0.0	0.0	0.0	0.0	T	6.6	15.4	7.0	6.5	3.9	0.0	0.0	39.4
1974-75	0.0	0.0	0.0	0.0	2.9	18.3	19.5	17.1	4.7	5.5	0.0	0.0	68.0
1975-76	0.0	0.0	0.0	0.0	2.2	25.1	14.7	8.4	24.3	T	0.0	0.0	74.7
1976-77	0.0	0.0	0.0	T	3.1	11.6	37.1	11.7	22.3	0.5	T	0.0	86.3
1977-78	0.0	0.0	0.0	0.0	1.5	20.2	37.1	13.5	11.5	0.4	T	0.0	84.2
1978-79	0.0	0.0	0.0	0.0	10.5	16.2	42.3	4.5	0.2	5.1	0.0	0.0	78.8
1979-80	0.0	0.0	0.0	1.3	T	2.1	3.1	11.9	8.6	T	0.0	0.0	27.0
1980-81	0.0	0.0	0.0	T	9.4	9.8	9.2	20.9	5.4	T	0.0	0.0	54.7
1981-82	0.0	0.0	0.0	0.0	T	33.0	26.2	9.0	6.5	15.3	0.0	0.0	90.0
1982-83	0.0	0.0	0.0	0.0	1.3	3.6	9.0	20.8	4.0	T	T	0.0	38.7
1983-84	0.0	0.0	0.0	0.0	T	17.5	20.4	12.7	25.0	T	T	0.0	75.6
1984-85	0.0	0.0	0.0	0.0	T	16.5	11.6	11.0	12.4	1.0	0.0	0.0	52.5
1985-86	0.0	0.0	0.0	0.0	8.3	11.2	15.1	11.5	4.4	T	T	0.0	50.5
1986-87	0.0	0.0	0.0	0.0	14.4	7.7	45.4	0.6	7.0	9.4	0.0	0.0	84.5
1987-88	0.0	0.0	0.0	0.0	5.8	12.0	19.3	23.7	4.6	0.1	0.0	0.0	65.5
1988-89	0.0	0.0	0.0	T	0.5	5.0	5.6	7.0	10.2	0.8	T	0.0	29.1
1989-90	0.0	0.0	0.0	0.0	4.7	12.0	23.1	22.0	1.3	T	0.0	0.0	63.1
1990-91	0.0	0.0	0.0	0.0	0.6	8.8	11.2	6.8	6.0	0.2	0.0	0.0	33.6
1991-92	0.0	0.0	0.0	0.0	1.3	13.5	3.8	5.3	6.8	4.5	0.0	0.0	35.2
1992-93	0.0	0.0	T	T	1.1	10.9	19.7	24.0	35.8	6.6	0.0	T	98.1
1993-94	0.0	0.0	0.0	T	0.2	10.0	36.8	14.4	23.6	T	0.0	0.0	85.0
1994-95	0.0	0.0	0.0	0.0	4.3	3.2	8.1	18.2	0.7	T	0.0	0.0	34.5
1995-96	0.0	0.0	0.0	0.0	7.0	28.0	27.3	15.6		14.3	T	0.0	
1996-97	0.0	0.0	0.0	0.0	2.2	20.0	14.3	14.1	22.7	3.4	0.0	0.0	76.7
1997-98	0.0	0.0	0.0	0.0	12.4	17.3	16.3	3.3	9.6	0.0	0.0	0.0	58.9
1998-99	0.0	0.0	0.0	0.0	0.6	5.5	18.0	1.9	12.5	T	0.0	0.0	38.5
1999-00	0.0	0.0	0.0	0.0	T	T	16.6	15.1					
2000-01							13.5	20.9	37.5	T	0.0	0.0	
2001-02	0.0	0.0	0.0	0.0	0.0	6.0	14.4	0.8	12.6	1.0	0.0	0.0	34.8
2002-	0.0	0.0	0.0	1.4	6.8	18.7							
POR= 59 YRS	0.0	0.0	T	0.1	3.9	13.4	17.5	13.9	11.5	2.5	0.1	T	62.9

WBAN : 14745

REFERENCE NOTES:

<p>PAGE 1: THE TEMPERATURE GRAPH SHOWS NORMAL MAXIMUM AND NORMAL MINIMUM DAILY TEMPERATURES (SOLID CURVES) AND THE ACTUAL DAILY HIGH AND LOW TEMPERATURES (VERTICAL BARS).</p> <p>PAGE 2 AND 3: H/C INDICATES HEATING AND COOLING DEGREE DAYS. RH INDICATES RELATIVE HUMIDITY W/O INDICATES WEATHER AND OBSTRUCTIONS S INDICATES SUNSHINE. PR INDICATES PRESSURE. CLOUDINESS ON PAGE 3 IS THE SUM OF THE CEILOMETER AND SATELLITE DATA NOT TO EXCEED EIGHT EIGHTHS(OKTAS).</p> <p>GENERAL: T INDICATES TRACE PRECIPITATION, AN AMOUNT GREATER THAN ZERO BUT LESS THAN THE LOWEST REPORTABLE VALUE. + INDICATES THE VALUE ALSO OCCURS ON EARLIER DATES. BLANK ENTRIES DENOTE MISSING OR UNREPORTED DATA. NORMALS ARE 30-YEAR AVERAGES (1961 - 1990). ASOS INDICATES AUTOMATED SURFACE OBSERVING SYSTEM. PM INDICATES THE LAST DAY OF THE PREVIOUS MONTH. POR (PERIOD OF RECORD) BEGINS WITH THE JANUARY DATA MONTH AND IS THE NUMBER OF YEARS USED TO COMPUTE THE MEAN. INDIVIDUAL MONTHS WITHIN THE POR MAY BE MISSING. WHEN THE POR FOR A NORMAL IS LESS THAN 30 YEARS, THE NORMAL IS PROVISIONAL AND IS BASED ON THE NUMBER OF YEARS INDICATED. 0.* OR * INDICATES THE VALUE OR MEAN-DAYS-WITH IS BETWEEN 0.00 AND 0.05. CLOUDINESS FOR ASOS STATIONS DIFFERS FROM THE NON-ASOS OBSERVATION TAKEN BY A HUMAN OBSERVER. ASOS STATION CLOUDINESS IS BASED ON TIME-AVERAGED CEILOMETER DATA FOR CLOUDS AT OR BELOW 12,000 FEET AND ON SATELLITE DATA FOR CLOUDS ABOVE 12,000 FEET. THE NUMBER OF DAYS WITH CLEAR, PARTLY CLOUDY, AND CLOUDY CONDITIONS FOR ASOS STATIONS IS THE SUM OF THE CEILOMETER AND SATELLITE DATA FOR THE SUNRISE TO SUNSET PERIOD.</p>	<p>GENERAL CONTINUED: CLEAR INDICATES 0 - 2 OKTAS, PARTLY CLOUDY INDICATES 3 - 6 OKTAS, AND CLOUDY INDICATES 7 OR 8 OKTAS. WHEN AT LEAST ONE OF THE ELEMENTS (CEILOMETER OR SATELLITE) IS MISSING, THE DAILY CLOUDINESS IS NOT COMPUTED. WIND DIRECTION IS RECORDED IN TENS OF DEGREES (2 DIGITS) CLOCKWISE FROM TRUE NORTH. "00" INDICATES CALM. "36" INDICATES TRUE NORTH. RESULTANT WIND IS THE VECTOR AVERAGE OF THE SPEED AND DIRECTION. AVERAGE TEMPERATURE IS THE SUM OF THE MEAN DAILY MAXIMUM AND MINIMUM TEMPERATURE DIVIDED BY 2. SNOWFALL DATA COMPRISE ALL FORMS OF FROZEN PRECIPITATION, INCLUDING HAIL. A HEATING (COOLING) DEGREE DAY IS THE DIFFERENCE BETWEEN THE AVERAGE DAILY TEMPERATURE AND 65° F. DRY BULB IS THE TEMPERATURE OF THE AMBIENT AIR. DEW POINT IS THE TEMPERATURE TO WHICH THE AIR MUST BE COOLED TO ACHIEVE 100 PERCENT RELATIVE HUMIDITY. WET BULB IS THE TEMPERATURE THE AIR WOULD HAVE IF THE MOISTURE CONTENT WAS INCREASED TO 100 PERCENT RELATIVE HUMIDITY.</p> <p>ON JULY 1, 1996, THE NATIONAL WEATHER SERVICE BEGAN USING THE "METAR" OBSERVATION CODE THAT WAS ALREADY EMPLOYED BY MOST OTHER NATIONS OF THE WORLD. THE MOST NOTICEABLE DIFFERENCE IN THIS ANNUAL PUBLICATION WILL BE THE CHANGE IN UNITS FROM TENTHS TO EIGHTS(OKTAS) FOR REPORTING THE AMOUNT OF SKY COVER.</p>
---	--

2002 CONCORD, NEW HAMPSHIRE (CON)

Concord, the Capital of New Hampshire, is situated near the geographical center of New England at an altitude of approximately 300 feet above sea level on the Merrimack River. Its surroundings are hilly with many lakes and ponds. The countryside is generously wooded, mostly on land reclaimed from fields which were formerly cleared for farming. From the coast about 50 miles to the southeast, the terrain slopes gently upward to the city. West of the city, the land rises some 2,000 feet higher in only half that distance. Mount Washington, at an elevation of 6,288 feet is in the White Mountains 75 miles north of town.

Northwesterly winds are prevalent. They bring cold, dry air during the winter and pleasantly cool, dry air in the summer. Stronger southerly winds occur during July and August, and easterly winds usually accompany summer and winter storms. Winter breezes are somewhat lighter, and winds are frequently calm during the night and early morning hours. Low temperatures, as a rule, do not interrupt normal out-of-doors activity because winds are calm or light, producing a low wind chill factor.

Very hot summer weather is infrequent. During any month, temperatures considerably above the average maxima and much below the normal minima are observed.

The average amount of precipitation for the warmer half of the year differs little from that for the colder half. Precipitation occurrences average approximately one day of three for the year, with a somewhat higher frequency for the April-May period, offsetting the lower frequency of August-October. The more significant rains and heavier snowfalls are associated with easterly winds, especially northeasterly winds. The first snowfall of an inch or more is likely to come between the middle of November and the middle of December. The snow cover normally lasts from mid-December until the last week of March, but bare ground is not rare in the winter, nor is a snowscape rare earlier or later in the season. Rain, sleet, or freezing rain may also occur.

Agriculture is neither intensive nor large-scale in the vicinity of the station. Potatoes and other frost-resistant vegetables, hardy fruits such as apples, forage for the dairy industry, and maple sugar are the principal crops.

Based on the 1951-1980 period, the average first occurrence of 32 degrees Fahrenheit in the fall is September 22 and the average last occurrence in the spring is May 23. Freezing temperatures have occurred as late as June and as early as August.

STATION LOCATION

CONCORD, NEW HAMPSHIRE

LOCATION	Occupied From	Occupied To	Airline Distances and Directions from previous Location	LATITUDE NORTH	LONGITUDE WEST	ELEVATION ABOVE										AUTOMATIC OBSERVING EQUIPMENT *	* TYPE M = AMOS T = AUTOB S = ASOS W = AWOS REMARKS
						GROUND											
						SEA LEVEL	WIND INSTRUMENT	EXTREME THERMOMETER	PSYCHROMETER	SUNSHINE SWITCH	TIPPING GAUGE	WEIGHING RAIN GAUGE	8 INCH RAIN GAUGE	HYGROMETER			
*NOTE:																	
<u>AIRPORT</u>																	
NE Airlines, Inc., Old Hangar	10/27/33	2/28/39	NA	43°12'	71°31'	339										On call station. No instruments.	
1st Floor, Admn. Bldg., Municipal Airport	3/1/39	11/19/42	Unknown	43°12'	71°31'	339	37	5	5					3		Instrument Installations. CAA observations until 11/19/42.	
2nd Floor, Admn. Bldg., Municipal Airport	5/1/41	8/8/62	No Change	43°12'	71°31'	339	47 a20	5	5	Unk	3	4		3		Instrument Installations. WB observations began 11/20/42. a. Moved to field 8/6/62.	
1st Floor, Admn. Bldg., Municipal Airport	8/8/62	03/01/96	No Change	43°12'	71°30'	339 d342	20	5 e	5 f	Unk d14	b3	b4		b3 c4		b. Minor move 8/8/62. c. Commissioned 1600' E of thermometer site 3/15/65. d. Effective 3/15/65. e. Removed 3/16/66. f. Removed 1976.	
Concord Municipal	03/01/96	Present	NA	43°12'	71°30'	g340								S		ASOS Commissioned 03/01/96 g. Ground Elevation	

For Hard Copy Subscription:

Price and ordering information: NCDC Subscribing Service Center, 310 State Route 956, Building 300, Rocket Center, WV 26726.

INQUIRIES/COMMENTS CALL: Toll Free (866) 742-3322

Visit our Web Site for other weather data: www.ncdc.noaa.gov

Non-Subscription Request:

NCDC Customer Services;
Phone: 828-271-4800
Fax: 828-271-4876
Email: ncdc.orders@noaa.gov

OFFICIAL BUSINESS
PENALTY FOR PRIVATE USE \$300
CHANGE SERVICE REQUESTED

**FIRST CLASS
POSTAGE & FEES PAID
United States Department of Commerce
NOAA Permit No. G - 19**

* NOTES: For earlier station history see previous editions.