

2002

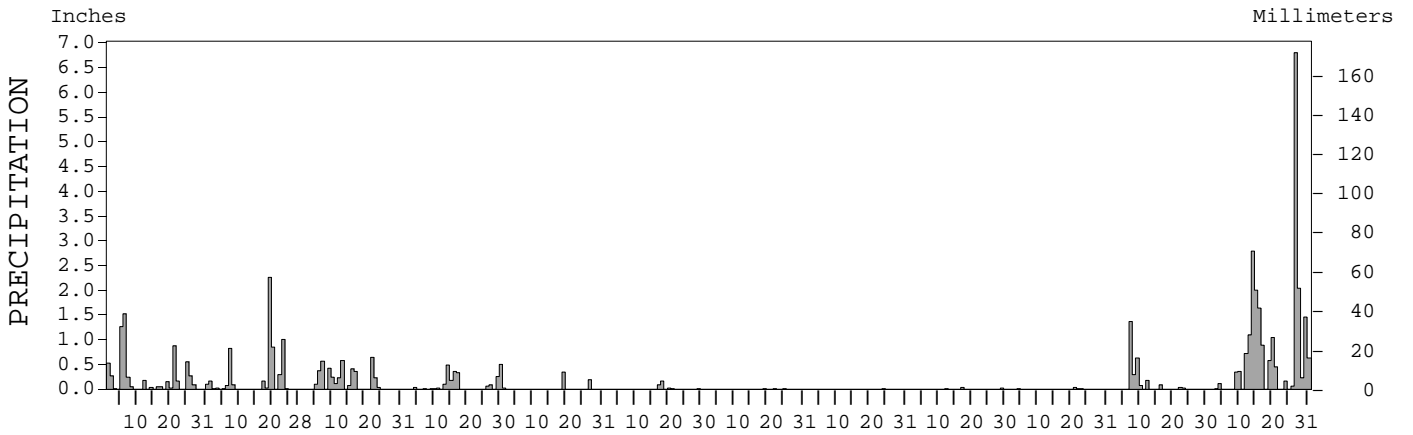
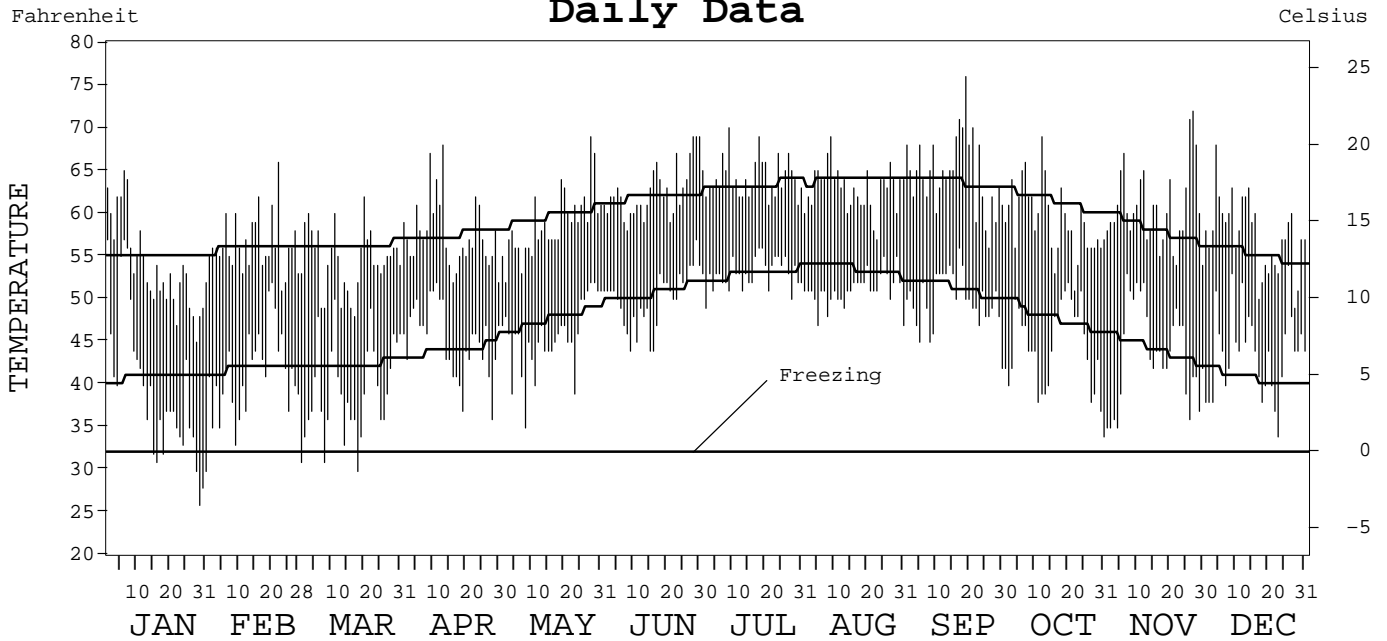
LOCAL CLIMATOLOGICAL DATA ANNUAL SUMMARY WITH COMPARATIVE DATA



ISSN 0198-0882

EUREKA,
CALIFORNIA (EKA)

Daily Data



I CERTIFY THAT THIS IS AN OFFICIAL PUBLICATION OF THE NATIONAL OCEANIC AND ATMOSPHERIC ADMINISTRATION, AND IS COMPILED FROM RECORDS ON FILE AT THE NATIONAL CLIMATIC DATA CENTER.

NATIONAL OCEANIC AND ATMOSPHERIC ADMINISTRATION	NATIONAL ENVIRONMENTAL SATELLITE, DATA, AND INFORMATION SERVICE	NATIONAL CLIMATIC DATA CENTER ASHEVILLE, NORTH CAROLINA	DIRECTOR NATIONAL CLIMATIC DATA CENTER
---	---	---	---

METEOROLOGICAL DATA FOR 2002

EUREKA, CA (EKA)

LATITUDE: 40° 48' 0 " N LONGITUDE: 124° 09' 0 " W ELEVATION (FT): GRND: 19 BARO: 20 TIME ZONE: PACIFIC (UTC + 8) WBAN: 24213

	ELEMENT	JAN	FEB	MAR	APR	MAY	JUN	JUL	AUG	SEP	OCT	NOV	DEC	YEAR	
TEMPERATURE °F	MEAN DAILY MAXIMUM	53.9	56.4	54.6	57.6	58.8	62.7	64.2	62.9	64.7	59.3	60.8	57.5	59.4	
	HIGHEST DAILY MAXIMUM	65	66	62	68	69	69	70	69	76	69	72	68	76	
	DATE OF OCCURRENCE	06	22	20	13	28	30+	09	09	19	12	27	04	SEP 19	
	MEAN DAILY MINIMUM	39.3	41.6	39.3	45.2	45.7	49.9	53.0	51.1	49.8	44.4	43.7	43.7	45.6	
	LOWEST DAILY MINIMUM	26	33	30	36	35	44	49	47	42	34	35	34	26	
	DATE OF OCCURRENCE	29	09	18	28	08	16+	02	31+	30	31	04+	23	JAN 29	
	AVERAGE DRY BULB	46.6	49.0	47.0	51.4	52.3	56.3	58.6	57.0	57.3	51.9	52.3	50.6	52.5	
	MEAN WET BULB														
	MEAN DEW POINT														
	NUMBER OF DAYS WITH:														
	MAXIMUM ≥ 90°	0	0	0	0	0	0	0	0	0	0	0	0	0	0
MAXIMUM ≤ 32°	0	0	0	0	0	0	0	0	0	0	0	0	0	0	
MINIMUM ≤ 32°	7	0	3	0	0	0	0	0	0	0	0	0	0	10	
MINIMUM ≤ 0°	0	0	0	0	0	0	0	0	0	0	0	0	0	0	
H/C	HEATING DEGREE DAYS	566	442	554	400	387	253	190	237	225	402	373	438	4467	
	COOLING DEGREE DAYS	0	0	0	0	0	0	0	0	0	0	0	0	0	
RH	MEAN (PERCENT)														
	HOUR 04 LST														
	HOUR 10 LST														
	HOUR 16 LST														
	HOUR 22 LST														
S	PERCENT POSSIBLE SUNSHINE														
W/O	NUMBER OF DAYS WITH:														
	HEAVY FOG (VISBY ≤ 1/4 MI)	0	5	1	2	2	0	2	6	10	7	11	1	47	
	THUNDERSTORMS	0	0	0	0	1	0	0	0	0	0	1	2	4	
CLOUDINESS	AVG. SKY COVER (OKTAS)	5	5	5	5	5	5	6	5	4	4	5	7	5	
	SUNRISE - SUNSET														
	MIDNIGHT - MIDNIGHT														
	NUMBER OF DAYS WITH:														
	CLEAR	8	4	7	6	4	6	3	9	12	11	9	3	82	
PARTLY CLOUDY	10	10	13	10	14	12	14	14	9	11	6	6	129		
CLOUDY	13	14	11	14	13	12	14	8	9	9	15	22	154		
PR	MEAN STATION PRESS. (IN.)														
	MEAN SEA-LEVEL PRESS. (IN.)														
WINDS	RESULTANT SPEED (MPH)														
	RES. DIR. (TENS OF DEGS.)														
	MEAN SPEED (MPH)														
	PREVAIL.DIR.(TENS OF DEGS.)														
	MAXIMUM 2-MINUTE WIND:														
	SPEED (MPH)														
	DIR. (TENS OF DEGS.)														
	DATE OF OCCURRENCE														
	PEAK GUST :														
	SPEED (MPH)														
DIR. (TENS OF DEGS.)															
DATE OF OCCURRENCE															
PRECIPITATION	WATER EQUIVALENT:														
	TOTAL (IN.)	6.37	5.76	4.32	2.42	0.55	0.28	0.03	0.01	0.06	0.06	2.66	23.31	45.83	
	GREATEST 24-HOUR (IN.)	2.78	2.90	0.81	0.75	0.34	0.24	0.01	0.01	0.03	0.04	1.36	6.85	6.85	
	DATE OF OCCURRENCE	05-06	19-20	06-07	29-30	19	17-18	25+	24	17	21-22	07	27-28	DEC 27-28	
	NUMBER OF DAYS WITH:														
	PRECIPITATION ≥ 0.01	19	14	14	14	3	5	3	1	3	4	8	20	108	
PRECIPITATION ≥ 0.10	12	7	12	7	2	1	0	0	0	0	4	18	63		
PRECIPITATION ≥ 1.00	2	2	0	0	0	0	0	0	0	0	1	8	13		
SNOWFALL	SNOW, ICE PELLETS, HAIL:														
	TOTAL (IN.)	0.5	0.0	T	T	0.0	0.0	0.0	0.0	0.0	0.0	0.0	T	0.5	
	GREATEST 24-HOUR (IN.)	0.4	0.0	T	T	0.0	0.0	0.0	0.0	0.0	0.0	0.0	T	0.4	
	DATE OF OCCURRENCE	21		07	15								17	JAN 21	
	MAXIMUM SNOW DEPTH (IN.)	0	0	0	0	0	0	0	0	0	0	0	0	0	
	NUMBER OF DAYS WITH:														
SNOWFALL ≥ 1.0	0	0	0	0	0	0	0	0	0	0	0	0	0		

NORMALS, MEANS, AND EXTREMES

EUREKA, CA (EKA)

LATITUDE: 40° 48' 0 " N LONGITUDE: 124° 09' 0 " W ELEVATION (FT): GRND: 19 BARO: 20 TIME ZONE: PACIFIC (UTC + 8) WBAN: 24213

ELEMENT		POR	JAN	FEB	MAR	APR	MAY	JUN	JUL	AUG	SEP	OCT	NOV	DEC	YEAR
TEMPERATURE °F	NORMAL DAILY MAXIMUM	30	55.0	55.9	56.1	57.4	59.6	61.8	63.3	63.9	63.6	61.3	58.0	55.1	59.2
	MEAN DAILY MAXIMUM	61	54.3	55.3	55.2	56.2	58.3	60.4	61.6	62.5	62.8	60.8	58.0	54.9	58.4
	HIGHEST DAILY MAXIMUM	92	78	85	78	80	84	85	76	82	86	87	78	77	87
	YEAR OF OCCURRENCE		1986	1930	1914	1989	1939	1945	1992	1991	1983	1993	1987	1963	OCT 1993
	MEAN OF EXTREME MAXS.	61	65.4	66.4	65.3	66.2	68.5	68.3	67.7	69.8	73.3	73.6	68.2	64.9	68.1
	NORMAL DAILY MINIMUM	30	40.8	41.8	42.2	44.0	47.6	50.7	52.8	53.4	51.2	47.7	43.9	40.6	46.4
	MEAN DAILY MINIMUM	61	41.3	42.6	42.9	44.6	47.8	50.6	52.3	53.0	51.5	48.4	45.0	41.9	46.8
	LOWEST DAILY MINIMUM	92	25	27	29	32	35	40	45	44	41	32	29	21	21
	YEAR OF OCCURRENCE		1937	1990	1917	2001	2002	1999	1924	1935	1946	1971	1994	1972	DEC 1972
	MEAN OF EXTREME MINS.	61	31.6	33.3	34.6	37.2	40.9	45.5	48.2	49.0	45.5	40.5	35.4	32.2	39.5
	NORMAL DRY BULB	30	48.0	49.3	49.4	50.2	52.8	55.5	57.0	57.9	57.3	54.7	51.7	48.4	52.7
	MEAN DRY BULB	61	47.9	49.0	49.1	50.3	53.0	55.5	56.9	57.8	57.1	54.7	51.5	48.4	52.6
	MEAN WET BULB														
	MEAN DEW POINT														
	NORMAL NO. DAYS WITH:														
MAXIMUM ≥ 90°	30	0.0	0.0	0.0	0.0	0.0	0.0	0.0	0.0	0.0	0.0	0.0	0.0	0.0	
MAXIMUM ≤ 32°	30	0.0	0.0	0.0	0.0	0.0	0.0	0.0	0.0	0.0	0.0	0.0	0.0	0.0	
MINIMUM ≤ 32°	30	1.6	0.9	0.2	0.0	0.0	0.0	0.0	0.0	0.0	*	0.4	1.9	5.0	
MINIMUM ≤ 0°	30	0.0	0.0	0.0	0.0	0.0	0.0	0.0	0.0	0.0	0.0	0.0	0.0	0.0	
H/C	NORMAL HEATING DEG. DAYS	30	530	451	475	430	354	263	216	198	232	326	423	532	4430
	NORMAL COOLING DEG. DAYS	30	0	0	0	0	0	0	0	2	5	0	0	0	7
RH	NORMAL (PERCENT)														
	HOUR 04 LST														
	HOUR 10 LST														
	HOUR 16 LST														
	HOUR 22 LST														
S	PERCENT POSSIBLE SUNSHINE	84	43	46	52	57	58	59	55	51	55	50	44	41	51
W/O	MEAN NO. DAYS WITH:														
	HEAVY FOG(VISBY≤1/4 MI)	79	3.9	2.7	1.9	1.6	1.2	2.1	3.5	5.4	7.5	9.5	6.1	4.3	49.7
	THUNDERSTORMS	79	0.7	0.6	0.4	0.2	0.2	0.2	0.2	0.1	0.3	0.4	0.6	0.6	4.5
CLOUDINESS	MEAN:														
	SUNRISE-SUNSET (OKTAS)	58	5.8	5.9	5.8	5.6	5.4	5.2	5.1	5.3	4.8	5.1	5.7	5.6	5.4
	MIDNIGHT-MIDNIGHT (OKTAS)	2	2.6	3.2	0.0	0.0	2.6	0.0	0.0	0.0	2.8	2.4	0.0	2.4	1.3
	MEAN NO. DAYS WITH:														
	CLEAR	92	5.9	5.1	5.6	6.1	6.5	7.2	6.4	5.4	8.6	8.0	6.1	6.3	77.2
PARTLY CLOUDY	92	6.3	5.8	8.0	8.4	9.9	9.7	10.8	10.8	8.6	8.4	6.6	6.5	99.8	
CLOUDY	92	18.8	17.4	17.5	15.5	14.7	13.1	13.5	14.2	12.4	14.1	16.9	17.9	186.0	
PR	MEAN STATION PRESSURE (IN)														
	MEAN SEA-LEVEL PRES. (IN)														
WINDS	MEAN SPEED (MPH)	54	6.9	7.2	7.6	8.0	7.9	7.4	6.8	5.8	5.5	5.6	6.0	6.4	6.8
	PREVAIL. DIR (TENS OF DEGS)														
	FASTEST MILE:														
	SPEED (MPH)	84	54	48	48	49	40	39	35	34	44	56	55	56	56
	DIR.		S	SW	SW	N	NW	NW	N	N	N	SW	S	S	SW
YEAR OF OCCURRENCE		1955	1960	1953	1915	1955	1949	1986	1920	1941	1962	1981	1931	OCT 1962	
PEAK GUST:															
SPEED (MPH)															
DIR. (TENS OF DEGS)															
YEAR OF OCCURRENCE															
PRECIPITATION	NORMAL (IN)	30	5.97	5.51	5.55	2.91	1.62	0.65	0.16	0.38	0.86	2.36	5.78	6.35	38.10
	MAXIMUM MONTHLY (IN)	92	13.92	13.95	13.97	10.68	6.05	2.57	1.34	3.42	3.56	13.04	16.58	23.31	23.31
	YEAR OF OCCURRENCE		1969	1998	1938	1963	1960	1954	1916	1983	1925	1950	1973	2002	DEC 2002
	MINIMUM MONTHLY (IN)	92	0.66	0.50	0.07	0.31	0.03	0.00	0.00	0.00	0.00	0.00	T	0.52	0.00
	YEAR OF OCCURRENCE		1985	1923	1926	1956	1955	1917	1967	1940	1929	1917	1967	1976	JUL 1967
	MAXIMUM IN 24 HOURS (IN)	92	4.42	4.88	4.02	2.56	2.23	1.73	1.18	2.21	1.54	5.83	5.21	6.85	6.85
	YEAR OF OCCURRENCE		1912	1959	1975	1983	1943	1943	1916	1983	1977	1950	1998	2002	DEC 2002
	NORMAL NO. DAYS WITH:														
PRECIPITATION ≥ 0.01	30	14.3	13.8	16.2	11.4	7.6	5.0	2.1	3.0	4.2	8.7	15.1	15.4	116.8	
PRECIPITATION ≥ 1.00	30	1.6	0.9	0.8	0.4	0.0	0.1	0.0	0.1	0.1	0.5	1.7	1.3	7.5	
SNOWFALL	NORMAL (IN)	30	0.1	0.2	0.*	0.*	0.0	0.0	0.0	0.0	0.0	0.0	0.*	0.1	0.4
	MAXIMUM MONTHLY (IN)	92	3.0	3.5	1.0	T	0.0	0.0	0.0	0.0	0.0	0.0	0.1	1.9	3.5
	YEAR OF OCCURRENCE		1935	1989	1966	1995							1977	1972	FEB 1989
	MAXIMUM IN 24 HOURS (IN)	92	3.0	2.0	1.0	T	0.0	0.0	0.0	0.0	0.0	0.0	0.1	1.9	3.0
	YEAR OF OCCURRENCE		1935	1989	1966	1995							1977	1972	JAN 1935
	MAXIMUM SNOW DEPTH (IN)	60	0	1	1	0	0	0	0	0	0	0	0	0	1
	YEAR OF OCCURRENCE			1989	1999										MAR 1999
	NORMAL NO. DAYS WITH:														
SNOWFALL ≥ 1.0	30	0.0	0.1	0.0	0.0	0.0	0.0	0.0	0.0	0.0	0.0	0.0	0.1	0.2	

PRECIPITATION (inches) 2002 EUREKA, CA (EKA)

YEAR	JAN	FEB	MAR	APR	MAY	JUN	JUL	AUG	SEP	OCT	NOV	DEC	ANNUAL
1973	6.47	3.85	7.10	0.35	0.85	0.23	T	0.08	2.35	4.14	16.58	7.02	49.02
1974	6.02	5.98	6.98	3.15	0.42	0.33	0.11	0.32	T	1.76	2.75	6.40	34.22
1975	5.20	7.68	10.73	3.29	1.05	0.58	0.10	0.58	0.01	6.77	4.72	5.38	46.09
1976	1.88	7.51	3.12	2.80	0.54	0.14	0.20	1.70	0.04	0.28	2.98	0.52	21.71
1977	1.90	2.24	4.33	1.20	2.10	0.07	T	0.20	3.35	2.79	4.51	6.60	29.29
1978	4.52	6.06	2.88	4.10	0.82	0.34	0.03	0.59	2.72	0.04	2.39	1.16	25.65
1979	3.82	6.26	1.70	3.94	2.25	0.05	0.31	0.13	1.15	6.14	6.19	3.75	35.69
1980	3.19	4.67	6.14	4.18	1.70	0.42	T	0.07	0.14	1.38	2.49	6.10	30.48
1981	7.67	3.72	4.64	0.71	2.02	0.57	T	0.01	0.97	3.71	9.39	9.88	43.29
1982	4.75	5.76	7.06	5.97	0.07	0.78	0.08	0.03	0.62	4.89	7.83	10.30	48.14
1983	8.48	9.18	10.73	5.47	1.12	0.65	0.89	3.42	0.87	1.87	10.40	14.13	67.21
1984	0.76	5.18	4.70	2.76	2.51	1.07	0.03	0.05	0.55	3.67	15.15	4.27	40.70
1985	0.66	3.69	4.68	0.45	1.14	0.89	0.15	0.52	1.06	4.07	2.98	2.78	23.07
1986	7.19	10.08	6.12	1.46	2.34	0.21	0.02	T	2.70	1.75	1.85	3.83	37.55
1987	6.48	3.38	6.10	1.15	0.41	0.26	0.20	0.06	0.02	1.05	4.23	10.92	34.26
1988	7.13	0.54	1.18	2.06	2.70	2.22	0.05	T	0.12	0.41	8.93	6.26	31.60
1989	4.71	2.88	7.63	2.01	1.67	0.21	0.08	0.13	0.85	2.90	1.60	0.80	25.47
1990	7.20	4.50	3.30	1.41	3.74	0.32	0.22	0.71	0.19	1.73	3.07	2.95	29.34
1991	1.65	2.75	6.94	2.52	2.16	0.26	1.13	0.37	T	1.06	1.95	2.36	23.15
1992	3.99	3.80	3.51	2.42	0.06	1.27	0.25	0.01	0.33	2.08	2.21	9.33	29.26
1993	7.15	5.93	4.72	5.94	4.44	1.23	0.37	0.54	0.03	0.56	1.35	7.12	39.38
1994	5.09	7.12	2.06	3.30	1.10	0.71	0.08	T	0.06	0.54	8.21	7.00	35.27
1995	12.74	1.40	11.18	7.47	1.21	1.85	0.08	0.22	0.69	0.53	2.26	11.56	51.19
1996	10.74	8.11	3.51	4.64	2.40	0.05	0.03	T	1.21	3.50	5.16	21.26	60.61
1997	8.81	2.55	2.73	3.06	0.90	1.25	T	0.84	2.05	2.73	7.39	4.73	37.04
1998	13.42	13.95	7.83	2.23	3.12	0.33	0.16	0.01	0.08	3.06	14.09	5.40	63.68
1999	4.37	10.32	8.94	1.79	1.62	0.15	0.04	0.30	0.05	1.60	7.36	3.02	39.56
2000	9.71	7.00	2.81	2.15	1.86	0.54	0.04	T	0.55	2.99	3.51	1.97	33.13
2001	3.79	3.60	2.45	2.54	0.71	0.69	0.20	0.21	0.28	1.00	7.71	11.56	34.74
2002	6.37	5.76	4.32	2.42	0.55	0.28	0.03	0.01	0.06	0.06	2.66	23.31	45.83
POR= 116 YRS	6.76	5.74	5.25	3.06	1.85	0.72	0.11	0.21	0.80	2.59	5.40	6.58	39.07

WBAN : 24213

AVERAGE TEMPERATURE (°F) 2002 EUREKA, CA (EKA)

YEAR	JAN	FEB	MAR	APR	MAY	JUN	JUL	AUG	SEP	OCT	NOV	DEC	ANNUAL
1973	47.3	50.7	47.4	50.1	52.0	55.1	55.6	54.8	57.1	52.1	51.4	51.2	52.1
1974	46.7	46.1	50.1	49.7	51.1	54.1	57.7	57.7	55.6	53.2	51.2	48.7	51.8
1975	45.8	48.0	47.6	46.5	51.4	53.2	56.9	55.3	55.2	54.2	48.5	47.4	50.8
1976	46.4	46.9	45.7	48.4	51.1	52.8	57.5	57.9	56.2	54.4	52.2	47.4	51.4
1977	47.4	50.5	46.2	49.2	51.5	54.2	55.1	58.3	57.1	53.8	51.2	51.0	52.1
1978	51.8	50.3	53.5	51.0	53.3	56.0	55.9	57.0	57.6	54.9	48.0	43.3	52.7
1979	46.6	48.0	50.0	51.0	52.7	54.0	58.1	59.4	62.3	57.3	52.4	51.8	53.6
1980	48.3	53.5	48.6	51.9	52.3	55.5	57.3	55.0	56.6	54.3	51.3	51.2	53.0
1981	52.5	51.3	50.2	50.6	53.3	56.5	55.2	58.1	57.9	54.3	53.6	52.1	53.8
1982	44.9	49.5	48.3	50.8	52.8	56.3	58.3	59.6	58.7	57.3	52.1	49.6	53.2
1983	51.3	53.4	53.4	51.8	54.4	58.0	60.5	61.9	60.7	57.9	53.6	50.6	55.6
1984	49.4	50.0	52.8	51.3	55.0	55.2	57.6	60.2	58.3	55.3	52.1	46.8	53.7
1985	48.4	47.9	47.4	51.6	53.9	56.6	58.6	58.5	56.7	54.5	46.6	47.7	52.4
1986	54.3	52.7	53.1	50.7	53.9	59.0	57.4	57.2	57.2	55.6	53.5	51.3	54.7
1987	49.1	51.4	52.7	54.2	56.6	57.7	59.5	58.5	57.3	57.8	54.8	49.7	54.9
1988	50.4	50.2	50.3	52.8	56.3	57.7	58.8	57.7	55.8	55.2	53.3	47.7	53.9
1989	46.0	45.6	51.8	54.6	55.9	57.6	59.4	59.3	56.6	54.9	52.6	49.2	53.6
1990	48.3	45.5	50.2	52.8	54.0	58.2	59.8	60.4	61.6	54.3	49.7	42.8	53.1
1991	47.8	52.8	48.1	50.9	52.2	53.8	57.3	59.9	57.2	56.1	51.4	48.3	53.0
1992	50.3	53.9	54.1	56.4	56.7	58.3	60.6	59.1	57.5	58.0	51.7	46.9	55.3
1993	46.4	49.4	53.4	53.6	57.9	57.9	57.4	59.8	55.8	56.9	49.9	49.5	54.0
1994	50.5	48.5	51.1	52.8	55.5	57.0	57.1	61.4	59.6	54.4	45.6	46.7	53.4
1995	52.4	51.7	50.4	51.1	53.7	56.0	60.2	58.4	60.3	54.9	53.9	52.0	54.6
1996	49.5	52.3	50.7	52.9	53.7	55.5	57.4	58.1	55.8	54.5	51.3	50.9	53.6
1997	48.5	47.9	49.5	51.4	57.8	57.8	59.5	61.4	62.2	55.1	53.4	47.7	54.4
1998	52.0	50.1	50.2	50.4	53.9	56.7	58.5	58.8	57.4	55.0	51.7	44.6	53.3
1999	47.4	47.3	46.8	48.6	51.3	55.0	56.5	60.1	54.9	52.5	54.7	46.0	51.8
2000	48.3	51.6	48.4	52.3	55.3	56.7	58.7	59.0	58.7	54.3	48.6	48.4	53.4
2001	46.9	47.0	50.2	49.2	54.0	56.0	57.4	59.5	56.2	54.4	51.8	49.2	52.7
2002	46.6	49.0	47.0	51.4	52.3	56.3	58.6	57.0	57.3	51.9	52.3	50.6	52.5
POR= 116 YRS	47.5	48.3	48.8	50.3	52.7	55.1	56.3	56.9	56.5	54.2	51.3	48.3	52.2

HEATING DEGREE DAYS (base 65°F) 2002 EUREKA, CA (EKA)

YEAR	JUL	AUG	SEP	OCT	NOV	DEC	JAN	FEB	MAR	APR	MAY	JUN	TOTAL
1973-74	287	308	230	393	399	419	559	523	455	454	423	321	4771
1974-75	222	220	274	360	407	501	587	469	532	547	417	347	4883
1975-76	244	290	286	328	486	542	569	516	590	490	424	360	5125
1976-77	226	213	258	324	375	535	537	400	577	468	415	317	4645
1977-78	302	200	231	342	408	427	403	404	347	415	357	264	4100
1978-79	274	241	215	307	503	667	562	467	459	412	374	323	4804
1979-80	208	165	92	231	369	404	511	330	500	386	388	280	3864
1980-81	230	303	246	328	402	422	384	377	451	423	357	249	4172
1981-82	299	205	203	324	339	396	616	430	512	419	373	258	4374
1982-83	204	158	181	232	381	468	415	317	355	391	320	203	3625
1983-84	133	90	129	215	336	443	475	429	369	403	301	285	3608
1984-85	222	142	195	295	378	556	507	472	532	396	338	243	4276
1985-86	195	194	244	316	546	533	329	337	365	422	338	169	3988
1986-87	227	236	227	290	341	417	487	372	377	316	260	213	3763
1987-88	163	196	226	221	302	470	446	423	453	358	265	215	3738
1988-89	187	218	274	297	345	529	582	535	403	309	278	214	4171
1989-90	164	171	243	306	365	482	513	541	453	356	332	198	4124
1990-91	154	141	95	325	451	680	528	336	516	418	387	330	4361
1991-92	229	164	225	274	401	511	450	316	329	250	248	193	3590
1992-93	135	176	220	211	393	556	570	433	354	337	214	203	3802
1993-94	229	152	268	253	446	472	442	455	426	357	286	233	4019
1994-95	241	102	155	321	576	559	383	368	445	412	341	263	4166
1995-96	142	196	133	308	325	394	472	360	435	352	344	278	3739
1996-97	231	205	268	323	407	431	501	476	475	401	212	209	4139
1997-98	163	106	82	300	341	529	397	409	450	432	337	242	3788
1998-99	192	186	223	305	393	624	541	490	556	485	417	296	4708
1999-00	254	146	295	382	303	580	511	382	506	378	298	242	4277
2000-01	191	179	181	326	484	506	555	500	453	467	337	264	4443
2001-02	228	168	257	322	389	481	566	442	554	400	387	253	4447
2002-	190	237	225	402	373	438							

WBAN : 24213

COOLING DEGREE DAYS (base 65°F) 2002 EUREKA, CA (EKA)

YEAR	JAN	FEB	MAR	APR	MAY	JUN	JUL	AUG	SEP	OCT	NOV	DEC	ANNUAL
1973	0	0	0	0	0	1	0	0	0	0	0	0	1
1974	0	0	0	0	0	0	0	0	0	0	0	0	0
1975	0	0	0	0	0	0	0	0	0	0	0	0	0
1976	0	0	0	0	0	0	0	0	0	0	0	0	0
1977	0	0	0	0	0	0	0	0	0	0	0	0	0
1978	0	0	0	0	0	0	0	0	0	1	0	0	1
1979	0	0	0	0	0	0	0	0	15	0	0	2	17
1980	0	2	0	0	0	0	0	0	0	3	0	0	5
1981	4	0	0	0	0	0	0	0	0	0	0	0	4
1982	0	0	0	0	0	3	0	0	0	2	0	0	5
1983	0	0	0	0	0	0	0	2	7	0	0	0	9
1984	0	0	0	0	0	0	0	0	4	1	0	0	5
1985	0	0	0	0	0	0	1	0	0	2	0	0	3
1986	0	0	0	0	0	0	0	0	0	5	0	0	5
1987	0	0	0	0	3	0	0	0	0	5	0	0	8
1988	0	0	0	0	0	0	0	0	4	0	0	0	4
1989	0	0	0	1	0	0	0	0	0	0	0	0	1
1990	0	0	0	0	0	0	0	4	0	0	0	0	4
1991	0	0	0	0	0	0	0	10	0	4	0	0	14
1992	0	0	0	0	0	0	2	0	3	2	0	0	7
1993	0	3	0	0	3	0	0	0	0	8	0	0	14
1994	0	0	0	0	0	0	0	0	0	0	0	0	0
1995	0	0	0	0	0	0	0	0	0	0	0	0	0
1996	0	0	0	0	0	0	0	0	0	1	0	0	1
1997	0	0	1	0	4	0	0	3	5	0	0	0	13
1998	0	0	0	0	0	0	0	0	0	0	0	0	0
1999	0	0	0	0	0	0	0	0	0	0	1	0	1
2000	0	0	0	0	0	0	0	0	0	0	0	0	0
2001	0	0	0	0	0	0	0	3	0	0	0	0	3
2002	0	0	0	0	0	0	0	0	0	0	0	0	0

SNOWFALL (inches) 2002 EUREKA, CA (EKA)

YEAR	JUL	AUG	SEP	OCT	NOV	DEC	JAN	FEB	MAR	APR	MAY	JUN	TOTAL
1973-74	0.0	0.0	0.0	0.0	0.0	0.0	T	0.0	0.0	0.0	0.0	0.0	T
1974-75	0.0	0.0	0.0	0.0	0.0	T	0.0	0.0	0.0	T	0.0	0.0	T
1975-76	0.0	0.0	0.0	0.0	0.0	0.0	0.0	0.0	0.1	0.0	0.0	0.0	0.1
1976-77	0.0	0.0	0.0	0.0	0.0	0.0	0.0	0.0	T	0.0	0.0	0.0	T
1977-78	0.0	0.0	0.0	0.0	0.1	0.0	0.0	0.0	0.0	0.0	0.0	0.0	0.1
1978-79	0.0	0.0	0.0	0.0	0.0	0.0	0.0	0.0	0.0	0.0	0.0	0.0	0.0
1979-80	0.0	0.0	0.0	0.0	0.0	0.0	0.0	0.0	0.0	0.0	0.0	0.0	0.0
1980-81	0.0	0.0	0.0	0.0	0.0	0.0	0.0	0.0	0.0	0.0	0.0	0.0	0.0
1981-82	0.0	0.0	0.0	0.0	0.0	0.0	T	0.0	T	T	0.0	0.0	T
1982-83	0.0	0.0	0.0	0.0	0.0	T	0.0	0.0	T	0.0	0.0	0.0	T
1983-84	0.0	0.0	0.0	0.0	T	1.0	0.0	0.0	0.0	0.0	0.0	0.0	1.0
1984-85	0.0	0.0	0.0	0.0	0.0	0.0	0.0	0.0	0.0	0.0	0.0	0.0	0.0
1985-86	0.0	0.0	0.0	0.0	0.0	0.0	0.0	0.0	0.0	0.0	0.0	0.0	0.0
1986-87	0.0	0.0	0.0	0.0	0.0	0.0	0.0	0.0	0.0	0.0	0.0	0.0	0.0
1987-88	0.0	0.0	0.0	0.0	0.0	T	0.0	0.0	0.0	0.0	0.0	0.0	T
1988-89	0.0	0.0	0.0	0.0	0.0	T	0.0	3.5	0.0	0.0	0.0	0.0	3.5
1989-90	0.0	0.0	0.0	0.0	0.0	0.0	0.0	1.0	0.0	0.0	0.0	0.0	1.0
1990-91	0.0	0.0	0.0	0.0	0.0	T	0.0	0.0	T	0.0	0.0	0.0	T
1991-92	0.0	0.0	0.0	0.0	0.0	T	0.0	0.0	0.0	0.0	0.0	0.0	T
1992-93	0.0	0.0	0.0	0.0	0.0	T	0.0	T	0.0	T	0.0	0.0	T
1993-94	0.0	0.0	0.0	0.0	0.0	0.0	0.0	T	T	0.0	0.0	0.0	T
1994-95	0.0	0.0	0.0	0.0	T	0.0	0.0	0.0	T	T	0.0	0.0	T
1995-96	0.0	0.0	0.0	0.0	0.0	0.0	T	T	T	0.0	0.0	0.0	T
1996-97	0.0	0.0	0.0	0.0	0.0	T	T	0.0	T	0.0	0.0	0.0	T
1997-98	0.0	0.0	0.0	0.0	0.0	0.0	T	T	0.0	0.0	0.0	0.0	T
1998-99	0.0	0.0	0.0	0.0	0.0	T	T	T	0.6	T	0.0	0.0	0.6
1999-00	0.0	0.0	0.0	0.0	0.0	T	T	0.0	0.0	0.0	0.0	0.0	T
2000-01	0.0	0.0	0.0	0.0	0.0	0.0	0.0	0.0	T	0.0	0.0	0.0	T
2001-02	0.0	0.0	0.0	0.0	0.0	T	0.5	0.0	T	T	0.0	0.0	0.5
2002-	0.0	0.0	0.0	0.0	0.0	T							
POR= 91 YRS	0.0	0.0	0.0	0.0	0.0	0.0	0.1	0.1	T	T	0.0	0.0	0.2

WBAN : 24213

REFERENCE NOTES:

<p>PAGE 1: THE TEMPERATURE GRAPH SHOWS NORMAL MAXIMUM AND NORMAL MINIMUM DAILY TEMPERATURES (SOLID CURVES) AND THE ACTUAL DAILY HIGH AND LOW TEMPERATURES (VERTICAL BARS).</p> <p>PAGE 2 AND 3: H/C INDICATES HEATING AND COOLING DEGREE DAYS. RH INDICATES RELATIVE HUMIDITY W/O INDICATES WEATHER AND OBSTRUCTIONS S INDICATES SUNSHINE. PR INDICATES PRESSURE. CLOUDINESS ON PAGE 3 IS THE SUM OF THE CEILOMETER AND SATELLITE DATA NOT TO EXCEED EIGHT EIGHTHS(OKTAS).</p> <p>GENERAL: T INDICATES TRACE PRECIPITATION, AN AMOUNT GREATER THAN ZERO BUT LESS THAN THE LOWEST REPORTABLE VALUE. + INDICATES THE VALUE ALSO OCCURS ON EARLIER DATES. BLANK ENTRIES DENOTE MISSING OR UNREPORTED DATA. NORMALS ARE 30-YEAR AVERAGES (1961 - 1990). ASOS INDICATES AUTOMATED SURFACE OBSERVING SYSTEM. PM INDICATES THE LAST DAY OF THE PREVIOUS MONTH. POR (PERIOD OF RECORD) BEGINS WITH THE JANUARY DATA MONTH AND IS THE NUMBER OF YEARS USED TO COMPUTE THE MEAN. INDIVIDUAL MONTHS WITHIN THE POR MAY BE MISSING. WHEN THE POR FOR A NORMAL IS LESS THAN 30 YEARS, THE NORMAL IS PROVISIONAL AND IS BASED ON THE NUMBER OF YEARS INDICATED. 0.* OR * INDICATES THE VALUE OR MEAN-DAYS-WITH IS BETWEEN 0.00 AND 0.05. CLOUDINESS FOR ASOS STATIONS DIFFERS FROM THE NON-ASOS OBSERVATION TAKEN BY A HUMAN OBSERVER. ASOS STATION CLOUDINESS IS BASED ON TIME-AVERAGED CEILOMETER DATA FOR CLOUDS AT OR BELOW 12,000 FEET AND ON SATELLITE DATA FOR CLOUDS ABOVE 12,000 FEET. THE NUMBER OF DAYS WITH CLEAR, PARTLY CLOUDY, AND CLOUDY CONDITIONS FOR ASOS STATIONS IS THE SUM OF THE CEILOMETER AND SATELLITE DATA FOR THE SUNRISE TO SUNSET PERIOD.</p>	<p>GENERAL CONTINUED: CLEAR INDICATES 0 - 2 OKTAS, PARTLY CLOUDY INDICATES 3 - 6 OKTAS, AND CLOUDY INDICATES 7 OR 8 OKTAS. WHEN AT LEAST ONE OF THE ELEMENTS (CEILOMETER OR SATELLITE) IS MISSING, THE DAILY CLOUDINESS IS NOT COMPUTED. WIND DIRECTION IS RECORDED IN TENS OF DEGREES (2 DIGITS) CLOCKWISE FROM TRUE NORTH. "00" INDICATES CALM. "36" INDICATES TRUE NORTH. RESULTANT WIND IS THE VECTOR AVERAGE OF THE SPEED AND DIRECTION. AVERAGE TEMPERATURE IS THE SUM OF THE MEAN DAILY MAXIMUM AND MINIMUM TEMPERATURE DIVIDED BY 2. SNOWFALL DATA COMPRISE ALL FORMS OF FROZEN PRECIPITATION, INCLUDING HAIL. A HEATING (COOLING) DEGREE DAY IS THE DIFFERENCE BETWEEN THE AVERAGE DAILY TEMPERATURE AND 65° F. DRY BULB IS THE TEMPERATURE OF THE AMBIENT AIR. DEW POINT IS THE TEMPERATURE TO WHICH THE AIR MUST BE COOLED TO ACHIEVE 100 PERCENT RELATIVE HUMIDITY. WET BULB IS THE TEMPERATURE THE AIR WOULD HAVE IF THE MOISTURE CONTENT WAS INCREASED TO 100 PERCENT RELATIVE HUMIDITY.</p> <p>ON JULY 1, 1996, THE NATIONAL WEATHER SERVICE BEGAN USING THE "METAR" OBSERVATION CODE THAT WAS ALREADY EMPLOYED BY MOST OTHER NATIONS OF THE WORLD. THE MOST NOTICEABLE DIFFERENCE IN THIS ANNUAL PUBLICATION WILL BE THE CHANGE IN UNITS FROM TENTHS TO EIGHTS(OKTAS) FOR REPORTING THE AMOUNT OF SKY COVER.</p>
---	--

2002
EUREKA,
CALIFORNIA (EKA)

Humboldt Bay is one-quarter mile north and one mile west of the station. There are no hills in Eureka of any consequence. The land slopes upward gently from the Bay toward the Coast Range, which begins about 3 miles east of the station and reaches the top of its first ridge approximately 10 miles to the east. The elevation of the ridge is 2,000 feet and extends in a semicircle from a point 20 miles north of Eureka to a point 25 miles south.

The climate of Eureka is completely maritime with high humidity prevailing the entire year. There are definite rainy and dry seasons. The rainy season begins in October and continues through April, accounting for about 90 percent of the annual precipitation. The dry season from May through September is marked by considerable fog or low cloudiness that usually clears in the late morning and sunny weather is generally the case during the early afternoon hours.

Temperatures are moderate the entire year. Although record highs have reached the mid 80s and record lows near 20 degrees, the usual yearly range is from lows in the mid 30s to highs in the mid 70s.

The principal industries are lumbering, fishing, tourism, and dairy farming. There is very little truck farming due to the low temperatures and lack of sunshine, however, the climate is nearly ideal for berries and flowers.

Based on the 1951-1980 period, the average first occurrence of 32 degrees Fahrenheit in the fall is December 10 and the average last occurrence in the spring is February 6.

STATION LOCATION

EUREKA, CALIFORNIA

LOCATION	Occupied From	Occupied To	Airline Distances and Directions from previous Location	LATITUDE NORTH	LONGITUDE WEST	ELEVATION ABOVE								AUTOMATIC OBSERVING EQUIPMENT *	* TYPE M = AMOS T = AUTOB S = ASOS W = AWOS REMARKS
						GROUND									
						SEA LEVEL GROUND TEMPERATURE	WIND INSTRUMENT	EXTREME THERMOMETERS	PSYCHROMETER	SUNSHINE SWITCH	TRAINING GAUGE	WEIGHING RAIN GAGE	8 INCH RAIN GAGE		
Buhne Building, 2nd & G Street	12/1/86	1/1/11	NA	40°48'	124°10'	28	60 a72 b78	65	65		c54	52		a. Effective 12/26/94. b. Effective 12/16/01. c. Installed 8/27/04.	
Post Office Building 5th & H Streets	1/1/11	10/01/94	1000 ft. SSE	40°48'	124°10'	43	88 e88	72	72	Unk d65	65	65		d. Effective 7/10/57. e. Type change 6/15/73.	
Woodley Island (New 10/1994)	10/01/94	Present		40°48'	124°09'	f19								f. Location name change 10/01/94. f. Ground elevation.	

For Hard Copy Subscription:

Price and ordering information: NCDC Subscribing Service Center, 310 State Route 956, Building 300, Rocket Center, WV 26726.

INQUIRIES/COMMENTS CALL: Toll Free (866) 742-3322

Visit our Web Site for other weather data: www.ncdc.noaa.gov

Non-Subscription Request:

NCDC Customer Services;
Phone: 828-271-4800
Fax: 828-271-4876
Email: ncdc.orders@noaa.gov

OFFICIAL BUSINESS
PENALTY FOR PRIVATE USE \$300
CHANGE SERVICE REQUESTED

**FIRST CLASS
POSTAGE & FEES PAID
United States Department of Commerce
NOAA Permit No. G - 19**