

2003

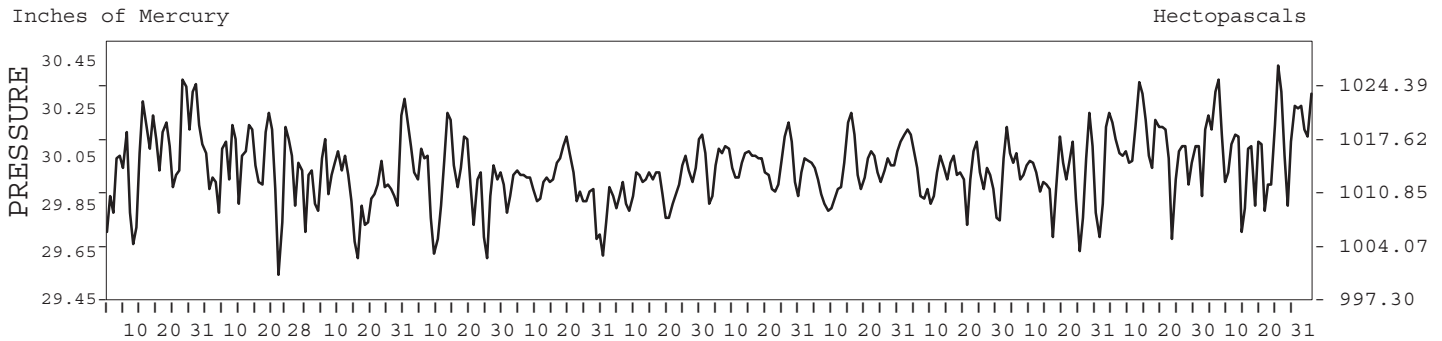
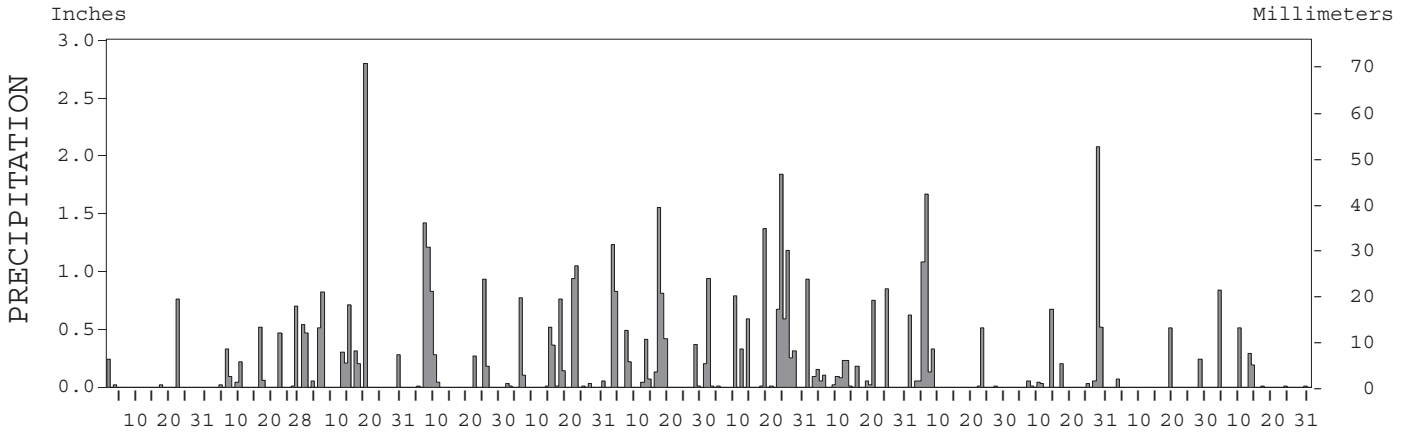
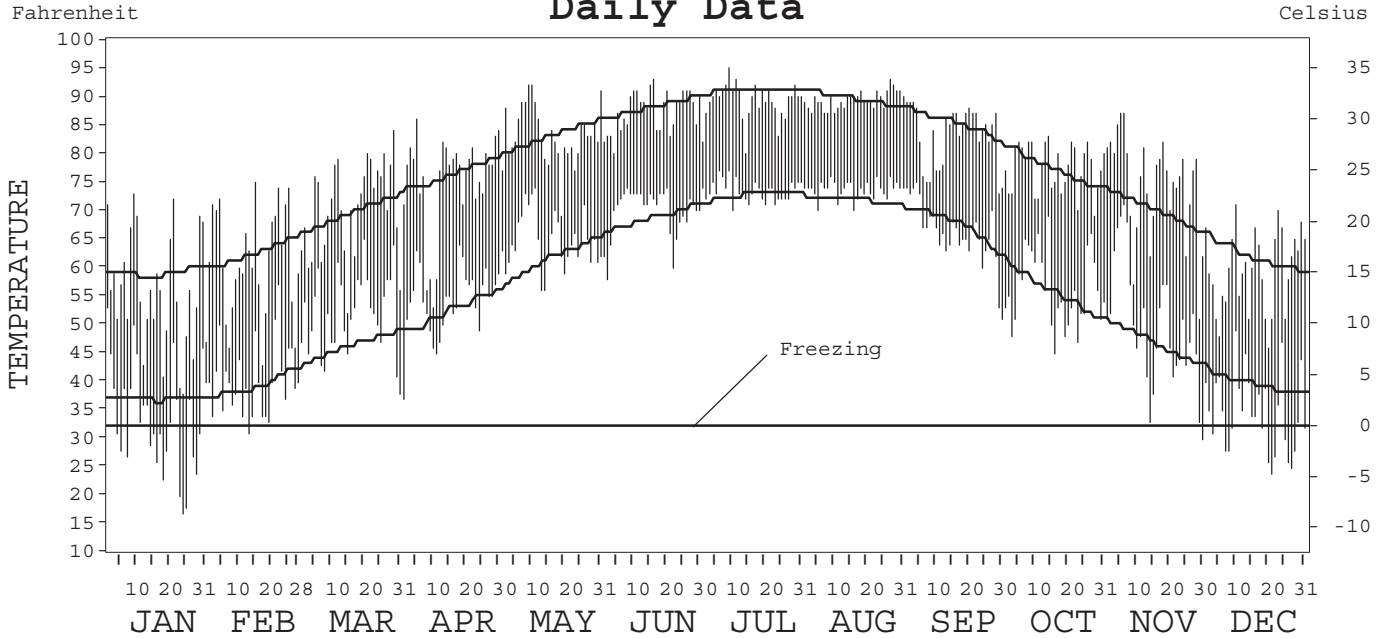
LOCAL CLIMATOLOGICAL DATA ANNUAL SUMMARY WITH COMPARATIVE DATA



ISSN 0198-4616

CHARLESTON, SOUTH CAROLINA (CHS)

Daily Data



I CERTIFY THAT THIS IS AN OFFICIAL PUBLICATION OF THE NATIONAL OCEANIC AND ATMOSPHERIC ADMINISTRATION, AND IS COMPILED FROM RECORDS ON FILE AT THE NATIONAL CLIMATIC DATA CENTER.

NATIONAL OCEANIC AND ATMOSPHERIC ADMINISTRATION	NATIONAL ENVIRONMENTAL SATELLITE, DATA, AND INFORMATION SERVICE	NATIONAL CLIMATIC DATA CENTER ASHEVILLE, NORTH CAROLINA	DIRECTOR NATIONAL CLIMATIC DATA CENTER
---	---	---	---

METEOROLOGICAL DATA FOR 2003

CHARLESTON, SC (CHS)

LATITUDE: 32° 53' 55" N LONGITUDE: 80° 02' 27" W ELEVATION (FT): GRND: 45 BARO: 48 TIME ZONE: EASTERN (UTC + 5) WBAN: 13880

ELEMENT		JAN	FEB	MAR	APR	MAY	JUN	JUL	AUG	SEP	OCT	NOV	DEC	YEAR	
TEMPERATURE °F	MEAN DAILY MAXIMUM	55.7	61.4	70.4	75.2	83.2	87.5	89.1	89.4	83.1	77.5	74.3	59.5	75.5	
	HIGHEST DAILY MAXIMUM	73	75	84	86	92	93	95	93	89	83	87	71	95	
	DATE OF OCCURRENCE	09	15	29	05	10+	16	09	27	03+	14	06+	10	JUL 09	
	MEAN DAILY MINIMUM	33.7	40.3	52.0	54.1	64.7	69.8	73.5	73.7	66.0	56.2	49.8	34.6	55.7	
	LOWEST DAILY MINIMUM	17	31	38	37	56	58	70	70	51	45	30	24	17	
	DATE OF OCCURRENCE	24	13	31	01	14+	02	10	16+	30	16	30	21	JAN 24	
	AVERAGE DRY BULB	44.7	50.9	61.2	64.7	74.0	78.7	81.3	81.6	74.6	66.9	62.1	47.1	65.7	
	MEAN WET BULB	38.8	45.9	56.4	59.1	68.1	72.6	75.6	76.0	69.0	61.6	56.7	42.1	60.2	
	MEAN DEW POINT	30.1	40.3	53.1	55.3	64.8	69.8	73.7	74.2	66.1	58.2	52.2	35.8	56.1	
	NUMBER OF DAYS WITH:														
	MAXIMUM ≥ 90°	0	0	0	0	3	10	18	15	0	0	0	0	0	46
	MAXIMUM ≤ 32°	0	0	0	0	0	0	0	0	0	0	0	0	0	0
MINIMUM ≤ 32°	15	1	0	0	0	0	0	0	0	0	1	13	30		
MINIMUM ≤ 0°	0	0	0	0	0	0	0	0	0	0	0	0	0		
H/C	HEATING DEGREE DAYS	619	393	145	69	0	0	0	0	4	26	151	551	1958	
	COOLING DEGREE DAYS	0	1	35	67	284	417	513	520	300	89	67	0	2293	
RH	MEAN (PERCENT)	60	72	80	76	76	77	82	83	79	77	74	69	75	
	HOUR 01 LST	68	82	90	90	86	89	90	93	88	89	86	80	86	
	HOUR 07 LST	74	84	91	89	87	86	90	92	90	91	89	81	87	
	HOUR 13 LST	44	57	65	54	60	61	68	64	63	58	53	51	58	
	HOUR 19 LST	58	69	75	73	73	75	82	84	78	78	76	67	74	
S	PERCENT POSSIBLE SUNSHINE														
W/O	NUMBER OF DAYS WITH:														
	HEAVY FOG (VISBY ≤ 1/4 MI)	0	4	2	2	1	1	1	4	0	0	6	0	21	
	THUNDERSTORMS	0	1	5	3	8	8	16	14	4	3	0	0	62	
CLOUDINESS	SUNRISE-SUNSET: (OKTAS)														
	CEILOMETER (≤ 12,000 FT.)														
	SATELLITE (> 12,000 FT.)														
	MIDNIGHT-MIDNIGHT: (OKTAS)														
	CEILOMETER (≤ 12,000 FT.)														
SATELLITE (> 12,000 FT.)															
NUMBER OF DAYS WITH:															
CLEAR															
PARTLY CLOUDY															
CLOUDY															
PR	MEAN STATION PRESS. (IN.)	30.06	30.01	29.92	29.97	29.92	29.93	30.01	30.00	29.97	29.97	30.09	30.10	30.00	
	MEAN SEA-LEVEL PRESS. (IN.)	30.11	30.06		30.02	29.97	29.98	30.06	30.05	30.01	30.02	30.14	30.15		
WINDS	RESULTANT SPEED (MPH)	4.6	2.1	0.7	1.7	0.3	2.9	2.1	0.2	3.4	2.0	0.6	2.4	1.0	
	RES. DIR. (TENS OF DEGS.)	27	27	10	02	07	26	25	18	03	02	32	32	31	
	MEAN SPEED (MPH)	8.8	8.4	7.7	8.0	8.5	7.2	7.6	6.3	7.7	6.4	7.1	7.1	7.6	
	PREVAIL. DIR. (TENS OF DEGS.)	24	20	06	20	23	20	20	20	01	04	03	27	20	
	MAXIMUM 2-MINUTE WIND:														
	SPEED (MPH)	28	32	29	26	28	38	33	24	32	25	30	28	38	
	DIR. (TENS OF DEGS.)	01	20	22	21	31	22	20	21	18	29	20	28	22	
	DATE OF OCCURRENCE	23	22	20	07	06	03	02	25	01	17	19	11	JUN 03	
	MAXIMUM 5-SECOND WIND:														
	SPEED (MPH)	36	43	39	31	35	56	44	36	38	32	39	36	56	
DIR. (TENS OF DEGS.)	32	20	27	21	22	19	22	16	16	29	20	29	19		
DATE OF OCCURRENCE	06	22	20	07	31	03	02	18	01	17	19	11	JUN 03		
PRECIPITATION	WATER EQUIVALENT:														
	TOTAL (IN.)	1.04	2.46	7.20	5.17	4.79	6.58	9.10	3.83	4.46	3.68	0.82	1.86	50.99	
	GREATEST 24-HOUR (IN.)	1.12	0.71	2.80	1.88	1.99	2.06	2.41	0.93	2.16	2.60	0.51	0.84	2.80	
	DATE OF OCCURRENCE	31-01	26-27	20	08-09	22-23	03-04	23-24	01	05-06	28-29	19	04	MAR 20	
	NUMBER OF DAYS WITH:														
	PRECIPITATION ≥ 0.01	4	10	12	9	15	13	16	16	10	10	3	7	125	
PRECIPITATION ≥ 0.10	2	5	11	7	8	10	12	8	6	4	2	4	79		
PRECIPITATION ≥ 1.00	0	0	1	2	1	2	3	0	2	1	0	0	12		
SNOWFALL	SNOW, ICE PELLETS, HAIL:														
	TOTAL (IN.)	T	0.0	0.0	0.0	0.0	0.0	0.0	0.0	0.0	0.0	0.0	0.0	T	
	GREATEST 24-HOUR (IN.)	T	0.0	0.0	0.0	0.0	0.0	0.0	0.0	0.0	0.0	0.0	0.0	T	
	DATE OF OCCURRENCE	23												JAN 23	
	MAXIMUM SNOW DEPTH (IN.)	0	0	0	0	0	0	0	0	0	0	0	0	0	
	NUMBER OF DAYS WITH:														
SNOWFALL ≥ 1.0	0	0	0	0	0	0	0	0	0	0	0	0	0		

NORMALS, MEANS, AND EXTREMES

CHARLESTON, SC (CHS)

LATITUDE: 32° 53' 55" N LONGITUDE: 80° 02' 27" W ELEVATION (FT): GRND: 45 BARO: 48 TIME ZONE: EASTERN (UTC + 5) WBAN: 13880

ELEMENT		POR	JAN	FEB	MAR	APR	MAY	JUN	JUL	AUG	SEP	OCT	NOV	DEC	YEAR
TEMPERATURE °F	NORMAL DAILY MAXIMUM	30	58.9	62.3	69.3	76.1	82.9	87.9	90.9	89.4	85.0	77.0	69.6	61.6	75.9
	MEAN DAILY MAXIMUM	58	59.3	62.3	68.6	76.3	82.9	87.6	90.1	89.1	84.6	76.9	69.1	61.3	75.7
	HIGHEST DAILY MAXIMUM	61	83	87	90	95	98	103	104	105	99	94	88	83	105
	YEAR OF OCCURRENCE		1950	1989	1974	2002	1989	1944	1986	1999	1944	1986	1961	1972	AUG 1999
	MEAN OF EXTREME MAXS.	58	75.6	78.1	82.9	88.4	92.6	96.4	96.7	95.9	92.3	86.9	81.7	76.6	87.0
	NORMAL DAILY MINIMUM	30	36.9	39.1	46.0	52.2	61.3	68.5	72.5	71.6	67.1	55.3	46.4	39.3	54.7
	MEAN DAILY MINIMUM	58	37.8	40.0	46.2	53.2	61.8	68.7	72.2	71.5	67.1	55.7	46.3	39.3	55.0
	LOWEST DAILY MINIMUM	61	6	12	15	29	36	50	58	56	42	27	15	8	6
	YEAR OF OCCURRENCE		1985	1973	1980	1944	1963	1972	1952	1979	1967	1976	1950	1962	JAN 1985
	MEAN OF EXTREME MINS.	58	21.0	23.9	29.4	37.9	48.2	58.6	65.9	64.4	55.2	39.2	29.4	22.8	41.3
	NORMAL DRY BULB	30	47.9	50.7	57.7	64.2	72.1	78.2	81.7	80.5	76.1	66.2	58.0	50.5	65.3
	MEAN DRY BULB	58	48.5	51.1	57.5	64.8	72.5	78.1	81.1	80.4	75.9	66.4	57.8	50.3	65.4
	MEAN WET BULB	20	44.4	47.4	52.2	58.2	66.1	72.3	75.8	74.8	70.4	61.8	54.3	46.3	60.3
	MEAN DEW POINT	20	38.5	41.4	46.2	52.6	61.9	69.4	73.2	72.4	67.5	57.9	49.9	40.8	56.0
	NORMAL NO. DAYS WITH:														
MAXIMUM ≥ 90°	30	0.0	0.0	*	0.9	3.8	11.5	19.8	15.6	6.1	0.4	0.0	0.0	58.1	
MAXIMUM ≤ 32°	30	0.2	0.1	*	0.0	0.0	0.0	0.0	0.0	0.0	0.0	0.0	0.1	0.4	
MINIMUM ≤ 32°	30	9.8	6.5	1.8	0.1	0.0	0.0	0.0	0.0	0.0	0.1	1.7	7.5	27.5	
MINIMUM ≤ 0°	30	0.0	0.0	0.0	0.0	0.0	0.0	0.0	0.0	0.0	0.0	0.0	0.0	0.0	
H/C	NORMAL HEATING DEG. DAYS	30	523	394	242	95	11	1	0	0	2	69	229	439	2005
	NORMAL COOLING DEG. DAYS	30	3	7	29	84	242	408	532	494	348	121	34	4	2306
RH	NORMAL (PERCENT)	30	71	69	68	68	72	76	77	79	79	75	74	73	73
	HOUR 01 LST	30	79	78	80	82	87	88	88	90	89	87	84	81	84
	HOUR 07 LST	30	81	81	83	84	85	86	87	90	90	88	86	84	85
	HOUR 13 LST	30	56	53	50	47	53	58	60	62	62	56	54	57	56
	HOUR 19 LST	30	70	66	64	62	68	72	74	77	78	76	75	72	71
S	PERCENT POSSIBLE SUNSHINE	39	56	60	66	71	70	66	67	64	61	63	59	56	63
W/O	MEAN NO. DAYS WITH:														
	HEAVY FOG (VISBY ≤ 1/4 MI)	54	4.0	2.2	2.4	2.1	2.2	1.5	0.7	1.3	1.9	2.5	3.6	3.5	27.9
	THUNDERSTORMS	61	0.9	1.1	2.2	2.9	6.4	10.0	13.3	11.2	5.3	1.6	0.8	0.6	56.3
CLOUDINESS	MEAN:														
	SUNRISE-SUNSET (OKTAS)	1			5.6		2.4	4.0							
	MIDNIGHT-MIDNIGHT (OKTAS)	1			5.6			4.0							
	MEAN NO. DAYS WITH:														
	CLEAR	1	3.0	4.0	11.0		13.0	9.0							
PARTLY CLOUDY	1	1.0	2.0	3.0		4.0	11.0								
CLOUDY	1	4.0	3.0	9.0		3.0	2.0								
PR	MEAN STATION PRESSURE (IN)	31	30.10	30.10	30.00	30.00	30.00	30.00	30.00	30.00	30.00	30.00	30.09	30.10	30.03
	MEAN SEA-LEVEL PRES. (IN)	20	30.14	30.13	30.07	30.03	30.03	30.01	30.05	30.04	30.03	30.09	30.13	30.17	30.08
WINDS	MEAN SPEED (MPH)	51	8.9	9.7	10.0	9.7	8.4	8.1	7.7	7.3	7.7	7.9	8.0	8.4	8.5
	PREVAIL. DIR (TENS OF DEGS)	32	27	20	20	20	20	20	20	20	03	02	02	02	20
	MAXIMUM 2-MINUTE:														
	SPEED (MPH)	8	36	33	39	38	33	44	40	38	51	39	32	38	51
	DIR. (TENS OF DEGS)		31	19	26	27	24	17	28	27	36	21	20	26	36
	YEAR OF OCCURRENCE		1996	2000	1997	2001	2000	1997	2002	1997	1999	1996	1996	2000	SEP 1999
	MAXIMUM 5-SECOND:														
	SPEED (MPH)	8	45	47	52	49	45	56	55	48	67	56	39	49	67
DIR. (TENS OF DEGS)		18	25	24	26	02	19	11	26	36	21	20	23	36	
YEAR OF OCCURRENCE		2001	1997	1997	2001	1999	2003	1999	1997	1999	1996	2003	2002	SEP 1999	
PRECIPITATION	NORMAL (IN)	30	4.08	3.08	4.00	2.77	3.67	5.92	6.13	6.91	5.98	3.09	2.66	3.24	51.53
	MAXIMUM MONTHLY (IN)	61	8.92	10.17	11.11	9.50	9.28	27.24	18.46	16.99	17.31	12.11	7.35	7.09	27.24
	YEAR OF OCCURRENCE		1993	1998	1983	1958	1957	1973	1964	1974	1945	1994	1972	1953	JUN 1973
	MINIMUM MONTHLY (IN)	61	0.63	0.33	0.70	0.01	0.57	0.96	1.76	0.73	0.18	0.08	0.16	0.66	0.01
	YEAR OF OCCURRENCE		1950	1947	1995	1972	2000	1970	1972	1980	1990	2000	1998	1984	APR 1972
	MAXIMUM IN 24 HOURS (IN)	61	3.90	5.93	6.63	4.10	6.23	10.10	5.81	5.77	10.52	5.77	5.24	3.40	10.52
	YEAR OF OCCURRENCE		1993	1998	1959	1958	1967	1973	1960	1964	1998	1944	1969	1978	SEP 1998
	NORMAL NO. DAYS WITH:														
PRECIPITATION ≥ 0.01	30	10.4	8.6	8.9	7.2	8.5	11.2	12.3	13.0	10.3	6.2	7.2	8.7	112.5	
PRECIPITATION ≥ 1.00	30	0.9	0.6	1.2	0.7	0.9	1.7	1.8	2.1	1.9	0.9	0.8	0.8	14.3	
SNOWFALL	NORMAL (IN)	30	0.1	0.4	0.1	0.0	0.0	0.0	0.0	0.0	0.0	0.0	0.*	0.5	1.1
	MAXIMUM MONTHLY (IN)	56	1.0	7.1	2.0	T	0.0	T	T	0.0	0.0	0.0	T	8.0	8.0
	YEAR OF OCCURRENCE		1977	1973	1969	1985		1995	1993				1995	1989	DEC 1989
	MAXIMUM IN 24 HOURS (IN)	56	0.8	5.9	2.0	T	0.0	T	T	0.0	0.0	0.0	T	6.6	6.6
	YEAR OF OCCURRENCE		1966	1973	1969	1985		1995	1993				1995	1989	DEC 1989
	MAXIMUM SNOW DEPTH (IN)	50	1	7	1	0	0	0	0	0	0	0	0	8	8
	YEAR OF OCCURRENCE		1966	1973	1980									1989	DEC 1989
	NORMAL NO. DAYS WITH:														
SNOWFALL ≥ 1.0	30	0.0	0.1	0.0	0.0	0.0	0.0	0.0	0.0	0.0	0.0	0.0	0.1	0.2	

PRECIPITATION (inches) 2003 CHARLESTON, SC (CHS)

YEAR	JAN	FEB	MAR	APR	MAY	JUN	JUL	AUG	SEP	OCT	NOV	DEC	ANNUAL
1974	1.42	2.96	3.04	0.86	4.82	9.45	3.09	16.99	4.80	0.40	3.78	3.00	54.61
1975	4.92	3.54	4.54	3.74	5.06	5.96	9.34	7.18	5.16	1.97	1.43	3.35	56.19
1976	1.62	0.95	2.33	0.62	8.87	5.59	4.48	5.22	6.03	4.10	3.57	5.12	48.50
1977	2.72	1.38	5.31	0.45	4.66	2.12	3.86	8.13	2.48	2.49	1.76	5.88	41.24
1978	4.31	1.82	3.25	1.97	4.68	3.42	6.19	4.01	5.06	0.18	1.87	4.13	40.89
1979	3.43	3.04	3.01	3.81	8.09	2.23	8.35	0.88	15.36	3.87	3.29	2.62	57.98
1980	3.99	1.25	7.99	3.43	5.85	3.15	6.97	0.73	2.60	1.52	2.19	1.25	40.92
1981	0.93	2.23	2.38	1.87	4.02	6.04	12.66	9.30	1.27	1.95	1.06	5.73	49.44
1982	2.18	3.64	1.26	6.51	3.04	9.16	5.40	4.10	3.92	2.42	1.19	4.20	47.02
1983	4.86	6.35	11.11	3.57	0.75	2.37	8.89	2.90	3.50	2.36	3.08	4.35	54.09
1984	5.12	3.51	5.63	6.30	6.89	2.96	4.87	1.96	5.27	1.67	1.39	0.66	46.23
1985	0.87	2.70	1.50	1.12	2.79	7.02	12.06	8.48	2.53	4.58	5.49	1.21	50.35
1986	2.05	4.17	2.67	0.83	0.93	2.51	5.07	13.41	4.60	2.95	4.03	5.21	48.43
1987	7.17	4.58	5.55	1.31	2.29	5.64	2.92	6.97	14.49	0.56	3.65	1.57	56.70
1988	2.76	2.38	1.78	3.21	1.86	2.32	4.13	11.88	9.72	0.73	1.08	0.72	42.57
1989	2.31	1.17	2.87	4.84	2.14	7.26	1.93	9.18	13.35	4.08	1.85	4.74	55.72
1990	3.96	1.68	6.63	1.65	1.91	3.12	5.95	6.32	0.18	7.29	3.75	2.69	45.13
1991	7.78	0.94	4.66	4.59	5.37	4.54	7.38	8.09	2.29	0.77	1.64	1.62	49.67
1992	4.93	2.23	3.59	2.75	5.07	6.22	4.36	9.55	3.04	4.87	5.76	1.50	53.87
1993	8.92	3.08	5.80	2.72	2.67	3.70	4.21	7.69	5.01	3.00	3.59	2.30	52.69
1994	7.50	1.23	4.44	0.39	2.35	11.71	8.07	5.39	8.08	12.11	2.92	6.35	70.54
1995	3.94	3.73	0.70	1.77	1.31	6.72	5.81	11.07	7.98	3.52	2.02	1.02	49.59
1996	1.05	1.36	4.04	2.70	1.72	4.04	7.34	5.73	8.77	5.07	1.74	2.14	45.70
1997	2.68	2.86	1.81	6.61	2.04	13.76	8.51	2.15	9.58	4.12	3.26	5.19	62.57
1998	7.58	10.17	5.51	4.01	4.63	3.41	6.74	4.44	14.74	1.99	0.16	4.34	67.72
1999	4.96	2.01	2.15	2.90	3.95	2.32	3.19	3.68	10.81	6.20	1.70	2.54	46.41
2000	4.04	2.01	3.66	1.78	0.57	4.35	10.81	4.47	8.88	T	2.72	2.65	45.94
2001	1.07	2.31	6.30	0.94	1.36	8.83	9.73	1.65	4.90	0.65	0.53	1.71	39.98
2002	2.42	2.19	4.48	1.57	2.39	5.89	6.55	11.37	4.92	8.44	5.66	5.09	60.97
2003	1.04	2.46	7.20	5.17	4.79	6.58	9.10	3.83	4.46	3.68	0.82	1.86	50.99
POR= 133 YRS	3.19	3.23	3.77	2.79	3.48	5.31	7.06	6.68	5.31	3.17	2.30	2.84	49.13

WBAN : 13880

AVERAGE TEMPERATURE (°F) 2003 CHARLESTON, SC (CHS)

YEAR	JAN	FEB	MAR	APR	MAY	JUN	JUL	AUG	SEP	OCT	NOV	DEC	ANNUAL
1974	61.8	51.5	62.0	63.6	74.0	75.4	78.2	79.3	75.0	61.8	55.5	51.0	65.8
1975	53.8	54.7	56.9	62.3	75.1	78.5	79.2	81.5	76.8	69.0	59.3	49.7	66.4
1976	44.8	55.9	62.3	64.0	70.3	75.8	81.0	77.2	73.9	61.4	50.9	48.8	63.9
1977	38.7	46.3	60.6	66.4	72.8	81.2	83.8	81.4	78.7	63.5	61.3	5.0	61.6
1978	43.5	42.7	55.2	66.5	72.0	78.6	81.1	81.3	77.4	65.7	63.3	52.7	65.0
1979	45.4	46.8	57.4	64.9	72.4	75.9	82.0	81.4	76.5	66.0	59.4	48.7	64.7
1980	48.7	45.9	54.6	64.3	71.4	78.4	82.4	82.1	79.8	65.0	55.4	47.5	64.6
1981	41.6	50.8	54.3	67.5	70.8	82.7	83.5	80.3	74.8	64.1	55.4	46.2	64.3
1982	45.1	51.5	59.2	61.8	72.2	78.8	81.2	80.0	74.5	65.1	60.9	57.0	65.6
1983	45.6	49.0	56.4	61.0	71.7	76.9	82.8	82.9	75.5	68.9	57.4	48.8	64.7
1984	46.1	52.8	57.6	64.0	71.7	78.8	79.9	81.1	73.0	71.3	54.2	57.2	65.6
1985	42.6	50.5	60.7	67.8	73.6	79.6	80.9	79.9	75.8	72.2	67.3	47.9	66.6
1986	45.8	55.5	58.0	66.1	74.3	81.4	86.1	79.9	78.6	68.8	63.1	52.8	67.5
1987	47.2	48.8	56.8	62.6	73.3	80.1	83.0	83.5	77.8	61.0	60.1	53.5	65.6
1988	43.2	49.2	57.4	64.4	71.9	76.7	81.8	82.0	76.3	62.7	61.0	50.6	64.8
1989	55.6	55.0	59.7	65.3	72.3	80.4	82.8	80.7	76.6	68.7	60.6	43.2	66.7
1990	55.4	59.2	62.5	66.0	74.4	81.0	83.6	82.5	79.2	70.5	60.4	56.4	69.3
1991	50.8	54.9	60.5	67.6	76.3	78.9	83.6	82.0	77.4	67.6	56.0	54.3	67.5
1992	49.5	55.0	57.9	63.6	70.3	77.5	83.9	80.6	76.2	65.1	60.4	51.0	65.9
1993	53.7	49.7	55.9	61.6	72.5	79.5	85.5	82.0	78.3	67.3	59.3	48.5	66.2
1994	46.5	53.4	61.3	68.3	71.1	79.8	82.0	80.0	75.7	66.4	62.5	54.4	66.8
1995	49.7	50.2	60.4	68.5	76.0	78.5	83.4	82.5	75.6	69.8	53.8	47.5	66.3
1996	48.0	51.8	53.7	64.2	74.4	78.3	81.9	78.7	75.4	65.8	54.6	52.3	64.9
1997	49.7	55.1	64.3	63.1	69.2	74.8	80.8	79.0	76.0	66.0	55.2	49.9	65.3
1998	52.5	53.7	56.2	65.2	75.1	82.8	83.8	81.2	77.3	68.6	62.4	55.7	67.9
1999	53.6	53.6	54.9	67.8	70.4	76.4	82.5	83.2	74.7	66.4	59.8	50.5	66.2
2000	47.4	53.2	60.9	62.8	75.6	79.7	81.5	80.3	75.2	64.9	55.3	42.6	65.0
2001	46.4	54.6	56.6	65.2	72.6	79.0	79.8	80.9	73.6	64.8	63.6	56.4	66.1
2002	51.3	51.8	60.5	69.6	71.4	78.7	82.7	79.6	79.0	70.7	56.0	48.3	66.6
2003	44.7	50.9	61.2	64.7	74.0	78.7	81.3	81.6	74.6	66.9	62.1	47.1	65.7
POR= 130 YRS	49.6	51.5	57.6	64.6	72.5	78.7	81.3	80.6	76.5	67.2	57.9	51.0	65.8

HEATING DEGREE DAYS (base 65°F) 2003 CHARLESTON, SC (CHS)

YEAR	JUL	AUG	SEP	OCT	NOV	DEC	JAN	FEB	MAR	APR	MAY	JUN	TOTAL
1974-75	0	0	5	136	299	432	350	294	273	152	0	0	1941
1975-76	0	0	0	40	221	466	624	265	146	94	15	3	1874
1976-77	0	0	0	159	418	501	808	516	186	58	17	0	2663
1977-78	0	0	0	112	175	459	663	616	309	52	18	0	2404
1978-79	0	0	0	57	83	399	602	505	241	70	2	0	1959
1979-80	0	0	0	68	203	500	495	555	321	82	17	0	2241
1980-81	0	0	0	80	287	537	719	393	333	55	16	0	2420
1981-82	0	0	3	88	291	577	611	372	214	132	3	0	2291
1982-83	0	0	0	102	154	276	596	440	264	146	2	0	1980
1983-84	0	0	4	24	230	500	578	347	240	92	16	0	2031
1984-85	0	0	9	13	337	249	692	418	183	47	4	0	1952
1985-86	0	0	2	16	54	526	586	261	244	74	4	0	1767
1986-87	0	6	0	56	128	376	545	446	272	131	7	0	1967
1987-88	0	0	0	135	188	358	669	458	239	85	7	2	2141
1988-89	0	0	0	107	145	442	286	312	220	121	14	0	1647
1989-90	0	0	1	50	169	669	294	189	137	67	0	0	1576
1990-91	0	0	0	65	152	280	432	293	185	34	0	0	1441
1991-92	0	0	0	41	281	349	472	293	234	119	28	0	1817
1992-93	0	0	3	70	197	430	353	421	279	132	1	0	1886
1993-94	0	0	3	49	206	504	568	327	152	30	11	0	1850
1994-95	0	0	0	46	119	338	468	414	167	35	1	0	1588
1995-96	0	0	8	44	357	535	518	383	350	107	15	0	2317
1996-97	0	0	0	54	323	391	467	288	94	106	20	9	1752
1997-98	0	0	0	87	293	463	391	318	288	66	0	0	1906
1998-99	0	0	0	38	113	306	358	315	314	61	20	0	1525
1999-00	0	0	4	71	175	446	543	339	148	96	0	0	1822
2000-01	0	0	1	80	306	687	571	300	272	94	1	0	2312
2001-02	0	0	8	110	94	277	428	368	195	38	21	0	1539
2002-03	0	0	0	17	276	510	619	393	145	69	0	0	2029
2003-	0	0	4	26	151	551							

WBAN : 13880

COOLING DEGREE DAYS (base 65°F) 2003 CHARLESTON, SC (CHS)

YEAR	JAN	FEB	MAR	APR	MAY	JUN	JUL	AUG	SEP	OCT	NOV	DEC	ANNUAL
1974	41	7	63	80	288	319	417	450	312	46	18	3	2044
1975	8	13	26	74	318	414	449	516	361	171	58	0	2408
1976	2	9	73	70	187	329	502	384	274	52	2	1	1885
1977	0	1	54	107	263	493	588	518	417	71	71	1	2584
1978	0	0	13	106	242	414	505	514	378	86	40	21	2319
1979	0	2	9	71	241	335	533	514	354	105	40	0	2204
1980	0	9	7	69	221	407	549	539	451	87	5	1	2345
1981	0	0	9	138	199	539	582	481	307	66	9	0	2330
1982	0	2	42	42	232	420	510	475	293	111	36	34	2197
1983	0	0	6	32	217	362	559	567	322	149	10	4	2228
1984	0	1	19	67	228	420	471	509	254	212	21	10	2212
1985	7	17	57	136	276	445	501	470	332	245	129	5	2620
1986	0	2	36	114	300	499	662	474	414	182	78	5	2766
1987	0	0	26	62	269	459	567	580	389	18	48	9	2427
1988	0	2	12	74	229	359	529	534	349	43	30	4	2165
1989	5	37	64	136	246	470	561	493	358	173	44	0	2587
1990	4	34	65	105	302	487	583	548	430	238	24	21	2841
1991	0	20	52	118	356	426	584	531	379	128	18	25	2637
1992	0	7	20	83	199	381	592	495	345	79	68	5	2274
1993	7	0	4	37	241	440	644	536	410	127	42	0	2488
1994	0	7	42	133	210	449	537	473	327	93	53	17	2341
1995	1	6	29	146	349	410	577	552	334	198	26	0	2628
1996	0	8	6	88	313	405	531	432	320	87	18	6	2214
1997	0	17	77	56	158	309	496	444	336	124	7	0	2024
1998	10	6	23	77	320	542	592	509	378	158	43	26	2684
1999	10	1	6	153	193	351	548	571	303	122	25	1	2284
2000	1	2	29	36	336	448	522	481	315	84	25	0	2279
2001	0	13	16	107	242	423	467	499	269	114	58	17	2225
2002	10	7	62	182	228	419	555	461	428	199	16	0	2567
2003	0	1	35	67	284	417	513	520	300	89	67	0	2293

SNOWFALL (inches) 2003 CHARLESTON, SC (CHS)

YEAR	JUL	AUG	SEP	OCT	NOV	DEC	JAN	FEB	MAR	APR	MAY	JUN	TOTAL
1974-75	0.0	0.0	0.0	0.0	0.0	0.0	0.0	0.0	0.0	0.0	0.0	0.0	0.0
1975-76	0.0	0.0	0.0	0.0	0.0	0.0	0.4	0.0	0.0	0.0	0.0	0.0	0.4
1976-77	0.0	0.0	0.0	0.0	0.0	0.0	1.0	0.3	0.0	0.0	0.0	0.0	1.3
1977-78	0.0	0.0	0.0	0.0	0.0	0.0	T	0.4	T	0.0	0.0	0.0	0.4
1978-79	0.0	0.0	0.0	0.0	0.0	0.0	0.0	1.8	0.0	0.0	0.0	0.0	1.8
1979-80	0.0	0.0	0.0	0.0	0.0	0.0	0.0	T	1.3	0.0	0.0	0.0	1.3
1980-81	0.0	0.0	0.0	0.0	0.0	3.8	0.0	0.0	0.0	0.0	0.0	0.0	3.8
1981-82	0.0	0.0	0.0	0.0	0.0	0.0	T	0.0	0.0	0.0	0.0	0.0	T
1982-83	0.0	0.0	0.0	0.0	0.0	0.0	0.0	0.0	T	0.0	0.0	0.0	T
1983-84	0.0	0.0	0.0	0.0	0.0	0.0	T	0.0	0.0	0.0	0.0	0.0	T
1984-85	0.0	0.0	0.0	0.0	0.0	0.0	T	0.0	0.0	T	0.0	0.0	T
1985-86	0.0	0.0	0.0	0.0	0.0	0.0	0.5	0.0	0.0	0.0	0.0	0.0	0.5
1986-87	0.0	0.0	0.0	0.0	0.0	0.0	T	0.0	T	0.0	0.0	0.0	T
1987-88	0.0	0.0	0.0	0.0	0.0	0.0	0.4	0.0	0.0	0.0	0.0	0.0	0.4
1988-89	0.0	0.0	0.0	0.0	0.0	T	0.0	0.9	T	0.0	0.0	T	0.9
1989-90	0.0	0.0	0.0	0.0	0.0	8.0	0.0	0.0	0.0	0.0	0.0	0.0	8.0
1990-91	0.0	0.0	0.0	0.0	0.0	0.0	0.0	T	0.0	0.0	0.0	0.0	T
1991-92	0.0	0.0	0.0	0.0	0.0	0.0	0.0	0.0	0.0	0.0	0.0	0.0	0.0
1992-93	0.0	0.0	0.0	0.0	0.0	0.0	0.0	0.0	T	0.0	0.0	0.0	T
1993-94	T	0.0	0.0	0.0	0.0	T	0.0	0.0	0.0	0.0	0.0	0.0	T
1994-95	0.0	0.0	0.0	0.0	0.0	0.0	0.0	0.0	0.0	0.0	0.0	T	T
1995-96	0.0	0.0	0.0	0.0	T	0.0	0.0	0.0	0.0	0.0	0.0	0.0	0.0
1996-97													
1997-98													
1998-99													
1999-00													
2000-01													
2001-02				0.0	0.0	0.0	T	0.0	0.0	0.0	0.0	0.0	0.0
2002-03	0.0	0.0	0.0	0.0	0.0	0.0	T	0.0	0.0	0.0	0.0	0.0	0.0
2003-	0.0	0.0	0.0	0.0	0.0	0.0							
POR= 55 YRS	T	0.0	0.0	0.0	T	0.3	0.1	0.2	0.1	T	0.0	T	0.7

WBAN : 13880

REFERENCE NOTES:

<p>PAGE 1: THE TEMPERATURE GRAPH SHOWS NORMAL MAXIMUM AND NORMAL MINIMUM DAILY TEMPERATURES (SOLID CURVES) AND THE ACTUAL DAILY HIGH AND LOW TEMPERATURES (VERTICAL BARS).</p> <p>PAGE 2 AND 3: H/C INDICATES HEATING AND COOLING DEGREE DAYS. RH INDICATES RELATIVE HUMIDITY W/O INDICATES WEATHER AND OBSTRUCTIONS S INDICATES SUNSHINE. PR INDICATES PRESSURE. CLOUDINESS ON PAGE 3 IS THE SUM OF THE CEILOMETER AND SATELLITE DATA NOT TO EXCEED EIGHT EIGHTHS(OKTAS).</p> <p>GENERAL: T INDICATES TRACE PRECIPITATION, AN AMOUNT GREATER THAN ZERO BUT LESS THAN THE LOWEST REPORTABLE VALUE. + INDICATES THE VALUE ALSO OCCURS ON EARLIER DATES. BLANK ENTRIES DENOTE MISSING OR UNREPORTED DATA. NORMALS ARE 30-YEAR AVERAGES (1971 - 2000). ASOS INDICATES AUTOMATED SURFACE OBSERVING SYSTEM. PM INDICATES THE LAST DAY OF THE PREVIOUS MONTH. POR (PERIOD OF RECORD) BEGINS WITH THE JANUARY DATA MONTH AND IS THE NUMBER OF YEARS USED TO COMPUTE THE MEAN. INDIVIDUAL MONTHS WITHIN THE POR MAY BE MISSING. WHEN THE POR FOR A NORMAL IS LESS THAN 30 YEARS, THE NORMAL IS PROVISIONAL AND IS BASED ON THE NUMBER OF YEARS INDICATED. 0.* OR * INDICATES THE VALUE OR MEAN-DAYS-WITH IS BETWEEN 0.00 AND 0.05. CLOUDINESS FOR ASOS STATIONS DIFFERS FROM THE NON-ASOS OBSERVATION TAKEN BY A HUMAN OBSERVER. ASOS STATION CLOUDINESS IS BASED ON TIME-AVERAGED CEILOMETER DATA FOR CLOUDS AT OR BELOW 12,000 FEET AND ON SATELLITE DATA FOR CLOUDS ABOVE 12,000 FEET. THE NUMBER OF DAYS WITH CLEAR, PARTLY CLOUDY, AND CLOUDY CONDITIONS FOR ASOS STATIONS IS THE SUM OF THE CEILOMETER AND SATELLITE DATA FOR THE SUNRISE TO SUNSET PERIOD.</p>	<p>GENERAL CONTINUED: CLEAR INDICATES 0 - 2 OKTAS, PARTLY CLOUDY INDICATES 3 - 6 OKTAS, AND CLOUDY INDICATES 7 OR 8 OKTAS. WHEN AT LEAST ONE OF THE ELEMENTS (CEILOMETER OR SATELLITE) IS MISSING, THE DAILY CLOUDINESS IS NOT COMPUTED. WIND DIRECTION IS RECORDED IN TENS OF DEGREES (2 DIGITS) CLOCKWISE FROM TRUE NORTH. "00" INDICATES CALM. "36" INDICATES TRUE NORTH. RESULTANT WIND IS THE VECTOR AVERAGE OF THE SPEED AND DIRECTION. AVERAGE TEMPERATURE IS THE SUM OF THE MEAN DAILY MAXIMUM AND MINIMUM TEMPERATURE DIVIDED BY 2. SNOWFALL DATA COMPRISE ALL FORMS OF FROZEN PRECIPITATION, INCLUDING HAIL. A HEATING (COOLING) DEGREE DAY IS THE DIFFERENCE BETWEEN THE AVERAGE DAILY TEMPERATURE AND 65° F. DRY BULB IS THE TEMPERATURE OF THE AMBIENT AIR. DEW POINT IS THE TEMPERATURE TO WHICH THE AIR MUST BE COOLED TO ACHIEVE 100 PERCENT RELATIVE HUMIDITY. WET BULB IS THE TEMPERATURE THE AIR WOULD HAVE IF THE MOISTURE CONTENT WAS INCREASED TO 100 PERCENT RELATIVE HUMIDITY.</p> <p>ON JULY 1, 1996, THE NATIONAL WEATHER SERVICE BEGAN USING THE "METAR" OBSERVATION CODE THAT WAS ALREADY EMPLOYED BY MOST OTHER NATIONS OF THE WORLD. THE MOST NOTICEABLE DIFFERENCE IN THIS ANNUAL PUBLICATION WILL BE THE CHANGE IN UNITS FROM TENTHS TO EIGHTS(OKTAS) FOR REPORTING THE AMOUNT OF SKY COVER.</p>
---	--

2003
CHARLESTON,
SOUTH CAROLINA (CHS)

Charleston is a peninsula city bounded on the west and south by the Ashley River, on the east by the Cooper River, and on the southeast by a spacious harbor. Weather records for the airport are from a site some 10 miles inland. The terrain is generally level, ranging in elevation from sea level to 20 feet on the peninsula, with gradual increases in elevation toward inland areas. The soil is sandy to sandy loam with lesser amounts of loam. The drainage varies from good to poor. Because of the very low elevation, a considerable portion of this community and the nearby coastal islands are vulnerable to tidal flooding.

The climate is temperate, modified considerably by the nearness to the ocean. The marine influence is noticeable during winter when the low temperatures are sometimes 10-15 degrees higher on the peninsula than at the airport. By the same token, high temperatures are generally a few degrees lower on the peninsula. The prevailing winds are northerly in the fall and winter, southerly in the spring and summer.

Summer is warm and humid. Temperatures of 100 degrees or more are infrequent. High temperatures are generally several degrees lower along the coast than inland due to the cooling effect of the sea breeze. Summer is the rainiest season with 41 percent of the annual total. The rain, except during occasional tropical storms, generally occurs as showers or thunderstorms.

The fall season passes through the warm Indian Summer period to the pre-winter cold spells which begin late in November. From late September to early November the weather is mostly sunny and temperature extremes are rare. Late summer and early fall is the period of maximum threat to the South Carolina coast from hurricanes.

The winter months, December through February, are mild with periods of rain. However, the winter rainfall is generally of a more uniform type. There is some chance of a snow flurry, with the best probability of its occurrence in January, but a significant amount is rarely measured. An average winter would experience less than one cold wave and severe freeze. Temperatures of 20 degrees or less on the peninsula and along the coast are very unusual.

The most spectacular time of the year, weatherwise, is spring with its rapid changes from windy and cold in March to warm and pleasant in May. Severe local storms are more likely to occur in spring than in summer.

The average occurrence of the first freeze in the fall is early December, and the average last freeze is late February, giving an average growing season of about 294 days.

STATION LOCATION

CHARLESTON, SOUTH CAROLINA

LOCATION	Occupied From	Occupied To	Airline Distances and Directions from previous Location	LATITUDE NORTH	LONGITUDE WEST	ELEVATION ABOVE										AUTOMATIC OBSERVING EQUIPMENT *	* TYPE M = AMOS T = AUTOB S = ASOS W = AWOS REMARKS
						SEA LEVEL		GROUND									
						GROUND TEMPERATURE	WIND INSTRUMENT	EXTREME THERMOMETERS	PSYCHROMETER	SUNSHINE SWITCH	TIPPING GAUGE BUCKET	WEIGHING RAIN GAGE	8 INCH RAIN GAGE	HYGROMETER			
*NOTE: <u>AIRPORT</u>																	
NWS Building International AP	6/7/82	10/01/95	0.25 mi. S	32°54'	80°02'	40	r20 w20	t5	t5	u7	u4	t5	t5	t6 v6		r. Not moved. t. Relocated to new site 5/26/82. u. Relocated to new site 6/1/82. v. Type change 6/5/85. w. Minor adjustment 10/15/87.	
Charleston Int'l AP	10/01/95	Present	NA	32°54'	80°02'	x45								S		ASOS Commissioned 10/01/95 x. Ground elevation.	

For Hard Copy Subscription:

Price and ordering information: NCDC Subscribing Service Center, 310 State Route 956, Building 300, Rocket Center, WV 26726.

INQUIRIES/COMMENTS CALL: Toll Free (866) 742-3322

Visit our Web Site for other weather data: www.ncdc.noaa.gov

Non-Subscription Request:

NCDC Customer Services;
Phone: 828-271-4800
Fax: 828-271-4876
Email: ncdc.orders@noaa.gov

OFFICIAL BUSINESS
PENALTY FOR PRIVATE USE \$300
CHANGE SERVICE REQUESTED

**FIRST CLASS
POSTAGE & FEES PAID
United States Department of Commerce
NOAA Permit No. G - 19**

* NOTES: For earlier station history see previous editions.