

2003

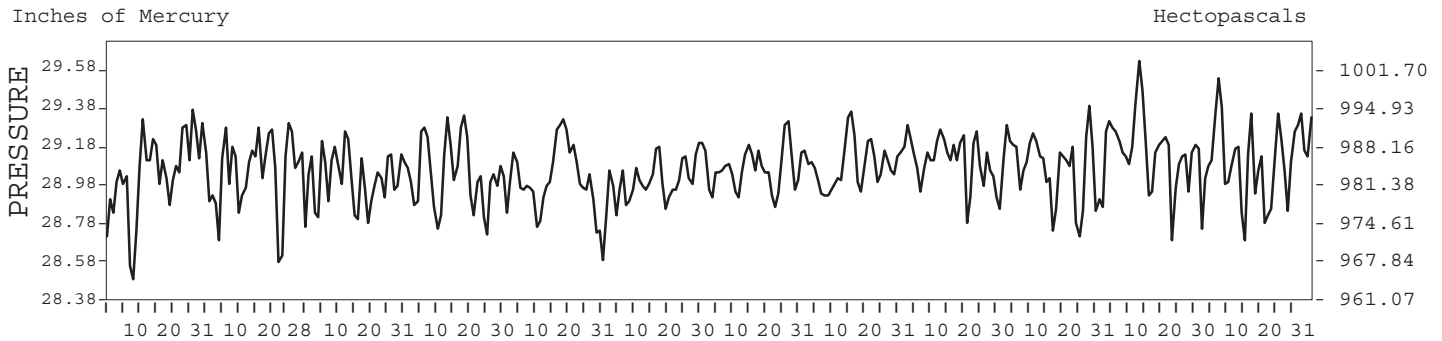
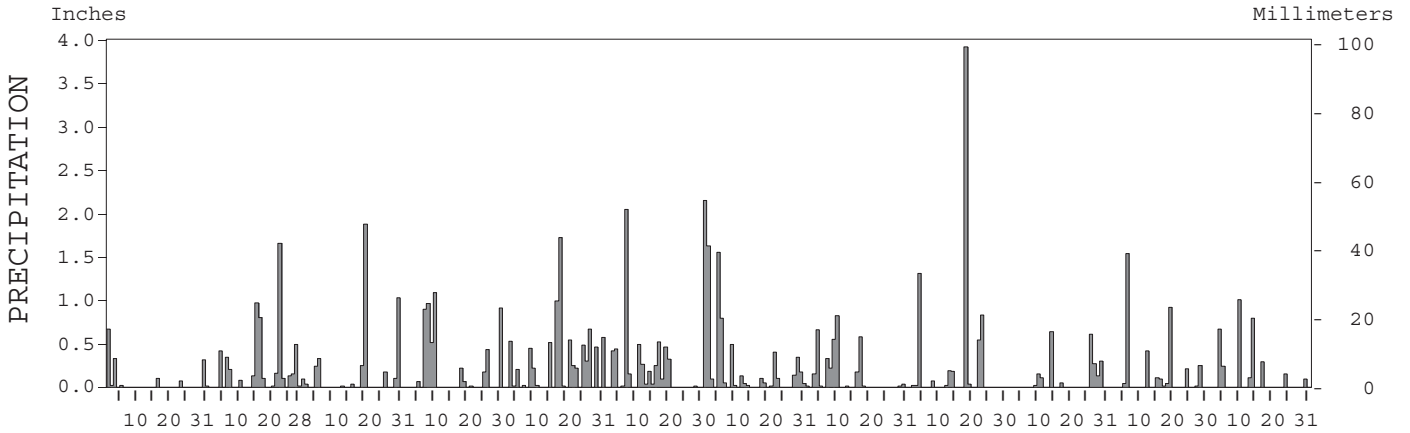
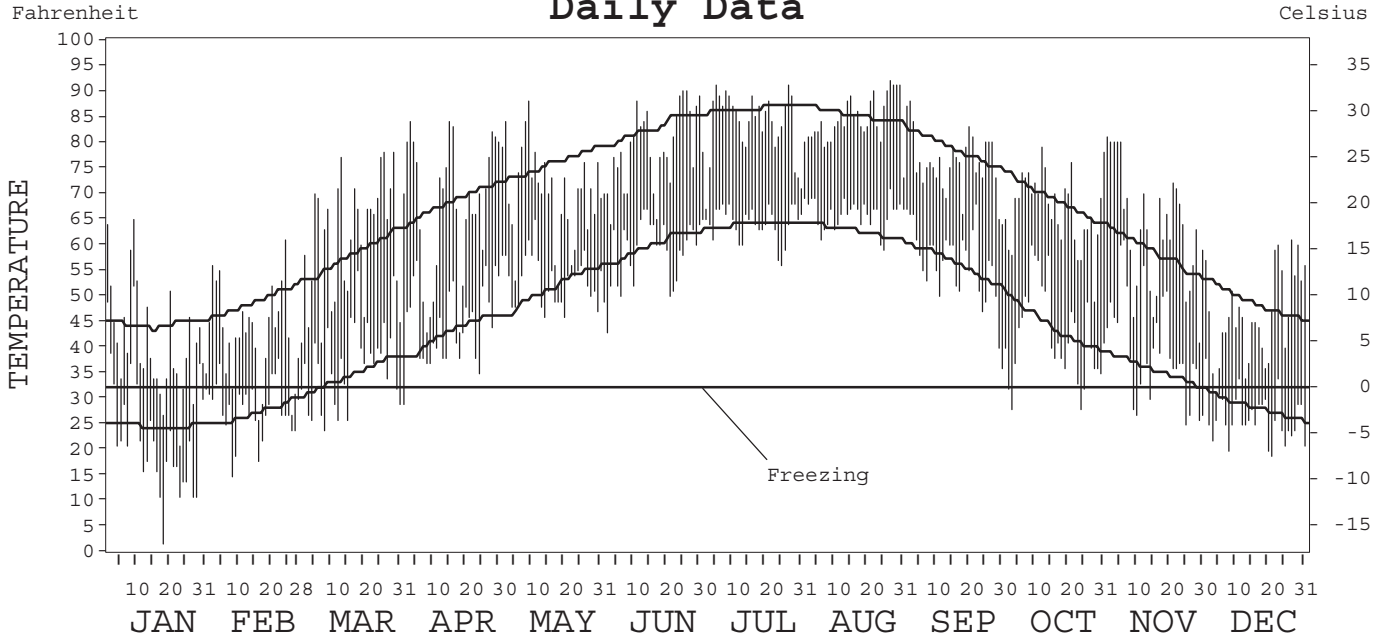
LOCAL CLIMATOLOGICAL DATA ANNUAL SUMMARY WITH COMPARATIVE DATA



ISSN 0198-5320

LYNCHBURG,
VIRGINIA (LYH)

Daily Data



I CERTIFY THAT THIS IS AN OFFICIAL PUBLICATION OF THE NATIONAL OCEANIC AND ATMOSPHERIC ADMINISTRATION, AND IS COMPILED FROM RECORDS ON FILE AT THE NATIONAL CLIMATIC DATA CENTER.

NATIONAL OCEANIC AND ATMOSPHERIC ADMINISTRATION
 NATIONAL ENVIRONMENTAL SATELLITE, DATA, AND INFORMATION SERVICE
 NATIONAL CLIMATIC DATA CENTER
 ASHEVILLE, NORTH CAROLINA
 DIRECTOR NATIONAL CLIMATIC DATA CENTER

METEOROLOGICAL DATA FOR 2003

LYNCHBURG, VA (LYH)

LATITUDE: 37° 20' 15" N LONGITUDE: 79° 12' 24" W ELEVATION (FT): GRND: 997 BARO: 1000 TIME ZONE: EASTERN (UTC + 5) WBAN: 13733

	ELEMENT	JAN	FEB	MAR	APR	MAY	JUN	JUL	AUG	SEP	OCT	NOV	DEC	YEAR	
TEMPERATURE °F	MEAN DAILY MAXIMUM	40.7	42.9	61.1	67.7	70.2	78.8	83.3	84.4	75.9	67.0	62.9	46.3	65.1	
	HIGHEST DAILY MAXIMUM	65	61	78	84	88	90	91	92	88	79	81	61	92	
	DATE OF OCCURRENCE	09	24	29+	15+	09	26+	27+	27	02	12	01	27	AUG 27	
	MEAN DAILY MINIMUM	23.5	28.0	36.8	44.6	53.1	58.5	64.2	65.9	56.1	42.5	39.8	26.4	45.0	
	LOWEST DAILY MINIMUM	2	15	24	29	46	43	56	59	36	28	25	19	2	
	DATE OF OCCURRENCE	18	08	08	01	20+	02	25	25	30	24+	25	21	JAN 18	
	AVERAGE DRY BULB	32.1	35.5	49.0	56.2	61.7	68.7	73.8	75.2	66.0	54.8	51.4	36.4	55.1	
	MEAN WET BULB	27.8	31.7				64.2	68.7	70.2	61.3	50.3	45.6	32.0		
	MEAN DEW POINT	17.4	25.2				61.1	66.4	68.1	58.2	45.3	39.0	23.4		
	NUMBER OF DAYS WITH:														
	MAXIMUM ≥ 90°	0	0	0	0	0	2	3	6	0	0	0	0	0	11
MAXIMUM ≤ 32°	5	5	0	0	0	0	0	0	0	0	0	1	1	11	
MINIMUM ≤ 32°	24	23	10	1	0	0	0	0	0	4	7	28	97		
MINIMUM ≤ 0°	0	0	0	0	0	0	0	0	0	0	0	0	0		
H/C	HEATING DEGREE DAYS	1015	820	489	273	133	28	0	0	43	310	406	880	4397	
	COOLING DEGREE DAYS	0	0	1	17	39	144	279	322	81	1	5	0	889	
RH	MEAN (PERCENT)	58	71	69	67	81	79	81	83	79	73	68	62	73	
	HOUR 01 LST	65	75	77	77	89	91	93	94	92	86	75	70	82	
	HOUR 07 LST	68	79	84	80	89	87	90	93	90	89	81	72	84	
	HOUR 13 LST	47	62	56	53	69	61	63	65	59	51	52	48	57	
	HOUR 19 LST	56	69	65	62	79	79	81	85	85	75	70	60	72	
S	PERCENT POSSIBLE SUNSHINE														
W/O	NUMBER OF DAYS WITH:														
	HEAVY FOG (VISBY ≤ 1/4 MI)	3	6	8	2	11	5	6	8	6	5	6	2	68	
	THUNDERSTORMS	0	1	1	2	5	4	10	9	3	1	0	0	36	
CLOUDINESS	SUNRISE-SUNSET: (OKTAS)														
	CEILOMETER (≤ 12,000 FT.)														
	SATELLITE (> 12,000 FT.)														
	MIDNIGHT-MIDNIGHT: (OKTAS)														
	CEILOMETER (≤ 12,000 FT.)														
SATELLITE (> 12,000 FT.)															
NUMBER OF DAYS WITH:															
CLEAR															
PARTLY CLOUDY															
CLOUDY															
PR	MEAN STATION PRESS. (IN.)	29.03	29.03	29.00	29.02	28.98	28.99	29.05	29.07	29.09	29.05	29.12	29.10	29.04	
	MEAN SEA-LEVEL PRESS. (IN.)	30.05	30.05				29.97	30.02	30.05	30.07	30.05	30.12	30.12		
WINDS	RESULTANT SPEED (MPH)	3.6	2.3	1.4	0.7	1.5	1.3	2.1	1.0	0.8	1.7	2.2	2.8	1.7	
	RES. DIR. (TENS OF DEGS.)	25	25	22	23	22	22	20	19	20	23	22	24	23	
	MEAN SPEED (MPH)	6.2	5.6	5.7	6.0	4.7	4.0	4.2	3.1	4.2	4.0	4.7	5.2	4.8	
	PREVAIL. DIR. (TENS OF DEGS.)	26	26	19	19	20	18	19	20	19	20	20	26	20	
	MAXIMUM 2-MINUTE WIND:														
	SPEED (MPH)	23	28	21	35	22	28	22	17	22	23	26	22	35	
	DIR. (TENS OF DEGS.)	27	04	26	20	29	22	29	26	31	28	22	19	20	
	DATE OF OCCURRENCE	20	16	31+	30	09	11	09+	30	18	15	19	23	APR 30	
	MAXIMUM 5-SECOND WIND:														
	SPEED (MPH)	33	39	46	58	38	39	30	26	35	35	40	31	58	
DIR. (TENS OF DEGS.)	26	25	29	23	29	21	23	27	32	27	24	29	23		
DATE OF OCCURRENCE	20	12	13	30	09	11	06	30	18	15	19	01	APR 30		
PRECIPITATION	WATER EQUIVALENT:														
	TOTAL (IN.)	1.53	5.75	4.16	5.32	8.17	5.71	8.31	3.56	7.13	2.28	3.64	3.35	58.91	
	GREATEST 24-HOUR (IN.)	0.67	1.75	2.12	1.43	2.15	2.06	3.16	0.82	3.94	0.88	1.57	1.01	3.94	
	DATE OF OCCURRENCE	01	21-22	19-20	08-09	17-18	06-07	01-02	10	18-19	26-27	05-06	10	SEP 18-19	
	NUMBER OF DAYS WITH:														
	PRECIPITATION ≥ 0.01	8	16	11	11	19	16	20	14	11	9	11	8	154	
PRECIPITATION ≥ 0.10	4	13	7	8	15	11	12	8	6	7	6	7	104		
PRECIPITATION ≥ 1.00	0	1	2	1	1	1	3	0	2	0	1	1	13		
SNOWFALL	SNOW, ICE PELLETS, HAIL:														
	TOTAL (IN.)														
	GREATEST 24-HOUR (IN.)														
	DATE OF OCCURRENCE														
	MAXIMUM SNOW DEPTH (IN.)														
	DATE OF OCCURRENCE														
NUMBER OF DAYS WITH:															
SNOWFALL ≥ 1.0															

NORMALS, MEANS, AND EXTREMES

LYNCHBURG, VA (LYH)

LATITUDE: 37° 20' 15" N LONGITUDE: 79° 12' 24" W ELEVATION (FT): GRND: 997 BARO: 1000 TIME ZONE: EASTERN (UTC + 5) WBAN: 13733

ELEMENT		POR	JAN	FEB	MAR	APR	MAY	JUN	JUL	AUG	SEP	OCT	NOV	DEC	YEAR
TEMPERATURE °F	NORMAL DAILY MAXIMUM	30	44.5	48.6	57.6	68.0	75.5	82.5	86.4	85.1	78.3	68.4	58.0	48.4	66.8
	MEAN DAILY MAXIMUM	56	45.0	48.5	56.8	68.1	75.6	82.8	86.1	84.8	78.3	68.4	57.7	47.8	66.7
	HIGHEST DAILY MAXIMUM	59	80	79	87	94	93	100	103	102	101	93	83	79	103
	YEAR OF OCCURRENCE		2002	2000	1986	2002	1969	1945	1954	1988	1954	1951	1974	1998	JUL 1954
	MEAN OF EXTREME MAXS.	56	65.7	68.8	77.6	85.9	88.5	92.6	95.0	93.9	90.7	83.0	75.2	67.2	82.0
	NORMAL DAILY MINIMUM	30	24.5	26.9	34.4	42.6	51.2	59.5	63.7	62.4	55.9	43.7	35.2	27.9	44.0
	MEAN DAILY MINIMUM	56	26.3	28.6	35.2	44.5	53.0	61.1	65.5	64.5	57.5	45.8	36.8	29.1	45.7
	LOWEST DAILY MINIMUM	59	-10	-10	7	20	31	40	49	45	35	21	8	-4	-10
	YEAR OF OCCURRENCE		1985	1996	1993	1985	1997	1997	1997	1965	2001	1969	1970	1983	FEB 1996
	MEAN OF EXTREME MINS.	56	7.7	12.0	19.5	28.8	39.0	48.5	56.1	54.9	42.8	30.0	20.4	11.8	31.0
	NORMAL DRY BULB	30	34.5	37.8	46.0	55.3	63.4	71.0	75.1	73.8	67.1	56.1	46.6	38.2	55.4
	MEAN DRY BULB	56	35.8	38.5	46.0	56.2	64.4	71.9	75.9	74.6	67.9	57.1	47.4	38.5	56.2
	MEAN WET BULB	17	32.9	35.5	41.1	49.2	58.1	66.2	66.1	68.5	58.8	51.9	41.3	32.7	50.2
	MEAN DEW POINT	17	22.7	24.5	29.5	37.9	49.5	58.6	62.5	64.7	55.0	46.1	34.0	24.9	42.5
	NORMAL NO. DAYS WITH:														
MAXIMUM ≥ 90°	30	0.0	0.0	0.0	0.4	0.5	3.9	9.6	7.1	2.3	*	0.0	0.0	23.8	
MAXIMUM ≤ 32°	30	4.4	2.4	0.3	0.0	0.0	0.0	0.0	0.0	0.0	0.0	0.1	2.2	9.4	
MINIMUM ≤ 32°	30	22.6	19.2	11.5	2.8	0.1	0.0	0.0	0.0	0.0	2.2	10.7	19.4	88.5	
MINIMUM ≤ 0°	30	0.4	*	0.0	0.0	0.0	0.0	0.0	0.0	0.0	0.0	0.0	*	0.4	
H/C	NORMAL HEATING DEG. DAYS	30	930	749	576	294	106	14	7	1	48	276	538	815	4354
	NORMAL COOLING DEG. DAYS	30	0	0	3	19	72	210	336	290	127	16	2	0	1075
RH	NORMAL (PERCENT)														
	HOUR 01 LST	30	74	74	73	72	81	84	86	89	89	87	80	76	80
	HOUR 07 LST	30	54	51	48	45	53	56	57	57	58	52	52	55	53
	HOUR 19 LST	30	63	58	55	51	62	69	70	72	76	75	66	66	65
S	PERCENT POSSIBLE SUNSHINE	52	52	56	58	62	62	65	62	62	61	62	56	53	59
W/O	MEAN NO. DAYS WITH:														
	HEAVY FOG (VISBY ≤ 1/4 MI)	30	3.9	3.8	2.8	2.7	3.7	2.4	2.9	3.3	3.8	2.8	3.7	3.6	39.4
	THUNDERSTORMS	30	0.3	0.4	1.3	2.6	6.2	6.4	8.2	6.8	3.2	0.9	0.5	0.1	36.9
CLOUDINESS	MEAN:														
	SUNRISE-SUNSET (OKTAS)	50	5.0	4.9	4.8	4.7	4.8	4.6	4.6	4.5	4.3	3.8	4.4	4.6	4.6
	MIDNIGHT-MIDNIGHT (OKTAS)	2	1.9	1.8	1.9	1.9	2.4	1.8	2.6	2.4	1.4	1.8	0.0	0.0	1.7
	MEAN NO. DAYS WITH:														
CLEAR	50	8.7	8.4	8.8	8.5	8.1	7.9	8.0	9.0	10.2	13.2	10.1	10.1	111.0	
PARTLY CLOUDY	50	7.3	6.9	8.7	9.2	10.3	11.8	11.4	11.1	8.8	7.2	7.3	6.7	106.7	
CLOUDY	50	14.9	13.0	13.5	12.3	12.6	10.2	11.1	10.9	11.0	10.6	12.5	14.2	146.8	
PR	MEAN STATION PRESSURE (IN)	16	29.06	29.08	29.06	29.01	29.02	29.04	29.07	29.07	29.09	29.11	29.10	29.08	29.07
	MEAN SEA-LEVEL PRES. (IN)	17	30.12	30.10	30.05	30.00	30.01	30.00	30.04	30.05	30.06	30.13	30.13	30.13	30.07
WINDS	MEAN SPEED (MPH)	19	7.2	7.0	7.5	7.5	6.2	5.8	5.4	4.8	5.3	5.3	6.1	6.1	6.2
	PREVAIL. DIR (TENS OF DEGS)	13	27	27	27	19	20	23	23	23	04	04	23	22	23
	MAXIMUM 2-MINUTE:														
	SPEED (MPH)	7	29	28	33	35	28	38	30	31	23	24	29	26	38
	DIR. (TENS OF DEGS)		28	04	17	20	29	19	28	05	29	16	18	28	19
	YEAR OF OCCURRENCE		2000	2003	1999	2003	1997	1998	1998	2002	1999	2001	2001	2001	JUN 1998
	MAXIMUM 5-SECOND:														
	SPEED (MPH)	7	45	46	46	58	39	52	40	44	36	35	40	41	58
DIR. (TENS OF DEGS)		24	03	29	23	16	18	27	06	14	27	24	27	23	
YEAR OF OCCURRENCE		2000	1998	2003	2003	2002	1998	1998	2002	2001	2003	2003	2002	APR 2003	
PRECIPITATION	NORMAL (IN)	30	3.54	3.10	3.83	3.46	4.11	3.79	4.39	3.41	3.88	3.39	3.18	3.23	43.31
	MAXIMUM MONTHLY (IN)	59	7.97	6.08	9.24	7.95	9.07	9.97	10.30	11.36	12.57	11.40	8.77	7.15	12.57
	YEAR OF OCCURRENCE		1978	1998	1975	1987	1971	1989	1984	1952	1996	1976	1985	1973	SEP 1996
	MINIMUM MONTHLY (IN)	59	0.49	0.54	0.74	0.28	0.88	0.47	1.15	0.73	0.02	0.01	0.30	0.33	0.01
	YEAR OF OCCURRENCE		1981	1978	1966	1976	1997	1986	1977	1995	1978	2000	2001	1965	OCT 2000
	MAXIMUM IN 24 HOURS (IN)	59	2.44	2.87	2.47	3.67	3.47	6.27	4.82	5.37	6.41	4.98	2.65	3.03	6.41
	YEAR OF OCCURRENCE		1998	1984	1975	1978	1960	1972	1984	1998	1996	1954	1951	1948	SEP 1996
	NORMAL NO. DAYS WITH:														
	PRECIPITATION ≥ 0.01	30	10.6	9.5	11.0	9.7	12.1	10.3	11.0	9.3	8.6	7.7	8.7	10.0	118.5
PRECIPITATION ≥ 1.00	30	0.7	0.7	0.9	0.8	1.0	1.0	1.3	0.9	1.0	1.0	0.8	0.6	10.7	
SNOWFALL	NORMAL (IN)	30	5.6	6.9	2.8	0.4	0.0	0.0	0.0	0.0	0.1	0.5	2.3	18.6	
	MAXIMUM MONTHLY (IN)	52	31.8	19.5	24.9	4.8	T	0.0	0.0	0.0	0.0	2.4	11.6	17.9	31.8
	YEAR OF OCCURRENCE		1966	1996	1960	1971	1996				1979	1968	1966		JAN 1966
	MAXIMUM IN 24 HOURS (IN)	52	19.0	14.6	13.4	4.8	T	0.0	0.0	0.0	0.0	2.4	6.7	12.7	19.0
	YEAR OF OCCURRENCE		1996	1983	1969	1971	1996				1979	1968	1969		JAN 1996
	MAXIMUM SNOW DEPTH (IN)	48	25	21	14	10	0	0	0	0	0	4	12	25	25
	YEAR OF OCCURRENCE		1966	1966	1962	1957						1968	1969		JAN 1966
NORMAL NO. DAYS WITH:															
SNOWFALL ≥ 1.0	30	1.4	1.6	0.7	0.2	0.0	0.0	0.0	0.0	0.0	0.0	0.1	0.7	4.7	

PRECIPITATION (inches) 2003 LYNCHBURG, VA (LYH)

YEAR	JAN	FEB	MAR	APR	MAY	JUN	JUL	AUG	SEP	OCT	NOV	DEC	ANNUAL
1974	3.94	2.05	2.96	3.11	4.86	2.93	2.84	6.00	5.55	0.38	1.74	3.68	40.04
1975	3.82	2.66	9.24	2.31	6.54	4.78	4.42	4.68	7.42	2.43	2.96	4.34	55.60
1976	2.70	1.98	4.07	0.28	5.32	7.34	1.29	1.07	5.06	11.40	1.38	2.83	44.72
1977	1.76	0.61	2.71	4.84	1.50	3.39	1.15	5.73	2.25	5.77	5.70	3.29	38.70
1978	7.97	0.54	3.84	5.33	6.69	3.36	4.83	3.89	0.02	0.84	3.22	4.06	44.59
1979	6.65	4.99	3.78	3.26	3.10	5.28	4.50	3.42	9.22	3.77	3.18	1.13	52.28
1980	4.63	1.07	5.03	3.99	3.03	0.65	3.61	1.34	1.79	2.35	2.85	0.56	30.90
1981	0.49	3.81	1.81	2.44	1.66	5.24	5.02	4.21	3.61	2.80	0.93	3.90	35.92
1982	3.59	4.41	2.41	3.28	3.67	6.45	5.07	2.60	2.25	2.75	2.85	2.26	41.59
1983	1.14	3.70	4.13	6.67	2.83	1.64	1.46	2.62	1.66	5.99	5.14	5.48	42.46
1984	1.54	5.39	6.45	4.27	4.21	2.74	10.30	5.98	2.15	2.18	1.99	2.01	49.21
1985	2.77	3.41	0.96	1.83	5.97	1.45	3.61	7.10	0.06	3.30	8.77	1.11	40.34
1986	0.83	2.85	0.97	1.21	3.10	0.47	3.20	3.57	1.63	2.38	3.27	4.86	28.34
1987	4.35	3.33	2.35	7.95	3.15	0.86	2.98	0.99	7.36	0.67	3.92	3.38	41.29
1988	2.09	1.26	1.55	3.72	4.20	2.04	3.04	3.68	1.73	1.84	4.25	1.20	30.60
1989	1.37	2.91	3.55	5.03	5.57	9.97	8.30	4.39	9.90	3.73	1.38	3.01	59.11
1990	3.19	3.20	4.02	3.10	5.70	4.79	2.78	3.27	2.03	10.81	1.68	5.14	49.71
1991	3.00	2.20	6.66	2.80	2.66	1.14	4.51	1.37	0.74	0.62	3.25	5.52	34.47
1992	2.31	2.94	3.20	4.26	5.99	1.88	3.27	1.50	4.13	1.76	5.60	3.45	40.29
1993	4.14	3.59	7.01	3.59	2.23	2.33	5.06	1.61	1.67	1.77	3.16	4.89	41.05
1994	4.78	4.61	7.24	1.72	1.85	4.49	7.14	3.16	2.41	1.03	1.88	1.78	42.09
1995	4.64	2.14	1.14	1.27	4.87	9.26	4.82	0.73	2.70	7.30	3.04	2.05	43.96
1996	6.33	2.70	4.24	2.01	5.02	2.57	2.78	4.78	12.57	3.10	4.42	4.57	55.09
1997	4.35	2.98	4.40	3.61	0.88	3.38	2.75	1.64	3.08	1.84	4.29	2.72	35.92
1998	7.85	6.08	5.05	5.50	4.74	2.63	1.98	6.27	1.87	1.50	1.17	3.08	47.72
1999	4.53	2.64	2.71	2.35	0.94	1.56	4.39	2.50	12.05	1.41	2.29	2.35	39.72
2000	3.33	1.84	2.51	3.48	2.02	5.41	6.88	5.60	4.02	0.01	1.23	1.51	37.84
2001	2.42	1.70	4.90	1.25	4.31	4.51	4.84	2.21	2.17	0.70	0.30	3.16	32.47
2002	2.33	1.03	3.88	1.82	4.16	0.72	4.64	1.79	2.46	4.62	5.40	4.04	36.89
2003	1.53	5.75	4.16	5.32	8.17	5.71	8.31	3.56	7.13	2.28	3.64	3.35	58.91
POR= 132 YRS	3.34	3.03	3.66	3.14	3.59	3.80	4.15	3.90	3.37	3.06	2.73	3.12	40.89

WBAN : 13733

AVERAGE TEMPERATURE (°F) 2003 LYNCHBURG, VA (LYH)

YEAR	JAN	FEB	MAR	APR	MAY	JUN	JUL	AUG	SEP	OCT	NOV	DEC	ANNUAL
1974	44.2	38.6	48.9	56.9	63.8	68.0	74.4	74.3	65.7	55.1	47.2	39.0	56.3
1975	38.7	39.7	42.3	52.9	66.9	71.4	73.9	76.5	66.2	59.2	50.5	37.3	56.3
1976	32.7	45.8	50.5	57.6	61.8	70.4	74.1	73.2	66.4	53.2	40.8	34.3	55.1
1977	23.0	36.8	51.5	58.8	67.1	70.1	78.4	76.0	70.0	54.6	49.6	36.2	56.0
1978	29.2	30.1	44.1	57.2	63.6	72.4	74.5	77.3	71.0	55.6	50.1	39.7	55.4
1979	31.9	27.9	49.3	56.3	63.9	69.2	74.3	75.0	67.9	55.2	50.1	40.7	55.1
1980	36.0	33.7	43.8	56.9	65.8	69.4	77.8	78.6	72.6	55.2	45.2	38.7	56.1
1981	31.3	40.8	43.3	59.4	62.5	75.7	76.4	73.3	66.3	53.8	47.0	34.0	55.3
1982	27.8	38.6	45.5	53.8	67.5	70.8	75.7	73.5	68.8	59.0	50.0	44.4	56.3
1983	35.9	37.7	46.9	52.4	62.1	72.1	77.4	78.4	68.7	57.5	48.0	34.9	56.0
1984	32.8	43.3	43.6	53.7	63.3	74.5	73.3	74.9	65.6	65.5	45.4	47.4	56.9
1985	32.3	39.2	49.6	61.2	65.9	71.5	74.9	73.4	68.5	60.3	54.6	35.6	57.3
1986	35.6	38.9	47.8	58.5	64.4	74.6	78.8	72.4	68.9	59.3	47.4	38.8	57.1
1987	33.9	36.9	46.7	53.8	67.0	74.7	79.4	77.5	69.9	52.2	49.7	41.3	56.9
1988	31.5	37.8	47.6	55.6	64.1	71.4	78.2	78.4	66.7	51.4	47.5	38.1	55.7
1989	41.2	38.4	47.3	54.9	62.0	73.9	75.7	73.7	67.8	58.5	47.1	29.4	55.8
1990	43.9	45.6	50.9	55.9	64.0	71.0	75.5	73.3	67.3	59.2	51.1	43.5	58.4
1991	38.9	42.2	49.6	57.8	69.4	73.5	78.5	75.4	69.8	59.6	46.6	42.4	58.6
1992	39.7	41.4	46.7	55.7	61.7	70.6	78.1	72.8	68.9	56.4	48.0	39.9	56.7
1993	40.1	36.4	43.8	56.1	67.6	73.9	80.7	77.8	70.8	56.8	48.1	37.7	57.5
1994	31.6	39.7	47.1	61.0	61.0	74.0	76.5	73.0	66.7	56.5	51.6	44.4	56.9
1995	38.7	37.0	50.4	57.3	65.1	72.3	77.7	77.8	67.0	58.9	43.0	36.0	56.8
1996	33.8	37.5	41.7	55.8	64.7	73.8	74.9	72.2	65.5	56.4	40.3	39.6	54.7
1997	34.9	41.1	47.2	51.0	58.0	68.0	75.0	72.1	65.9	54.9	42.5	37.0	54.0
1998	40.1	40.7	44.9	55.2	65.7	72.0	74.7	74.0	71.4	56.7	46.8	41.7	57.0
1999	38.4	40.0	42.6	56.0	62.7	69.9	77.4	75.0	65.8	54.4	51.1	39.9	56.1
2000	33.7	41.3	49.9	54.0	65.3	72.8	72.1	72.2	64.8	57.1	43.0	28.9	54.6
2001	34.8	41.4	42.6	57.1	62.5	71.8	71.0	74.7	64.2	54.1	50.6	41.9	55.6
2002	39.1	40.7	46.4	57.8	62.9	73.3	76.7	76.1	69.9	57.0	45.0	35.8	56.7
2003	32.1	35.5	49.0	56.2	61.7	68.7	73.8	75.2	66.0	54.8	51.4	36.4	55.1
POR= 129 YRS	37.0	38.9	46.7	56.2	65.3	73.0	76.8	75.2	69.0	58.0	47.5	39.0	56.9

HEATING DEGREE DAYS (base 65°F) 2003 LYNCHBURG, VA (LYH)

YEAR	JUL	AUG	SEP	OCT	NOV	DEC	JAN	FEB	MAR	APR	MAY	JUN	TOTAL
1974-75	0	0	74	304	537	799	808	701	696	362	45	11	4337
1975-76	0	0	60	185	432	853	994	550	443	273	132	23	3945
1976-77	0	2	34	370	719	947	1294	783	417	217	58	26	4867
1977-78	0	0	12	325	464	887	1103	972	637	237	125	6	4768
1978-79	0	0	25	289	439	777	1018	1033	489	265	83	11	4429
1979-80	0	6	27	320	444	746	892	901	652	255	65	19	4327
1980-81	0	0	28	312	589	807	1039	670	666	197	131	2	4441
1981-82	0	0	55	353	535	954	1144	731	597	331	29	1	4730
1982-83	0	1	33	229	446	637	893	758	554	380	127	9	4067
1983-84	0	0	73	243	502	927	991	622	656	348	111	5	4478
1984-85	0	0	91	59	580	539	1006	716	482	170	49	11	3703
1985-86	1	0	53	167	307	901	904	723	529	208	95	2	3890
1986-87	0	18	26	225	520	805	957	782	564	341	55	0	4293
1987-88	0	0	11	389	450	729	1030	782	538	282	83	37	4331
1988-89	0	0	39	417	517	828	732	737	556	317	155	0	4298
1989-90	0	2	58	221	525	1100	645	536	455	301	87	8	3938
1990-91	0	0	54	206	408	659	804	631	469	231	37	4	3503
1991-92	0	0	41	195	546	697	780	678	562	294	144	5	3942
1992-93	0	0	48	266	504	773	766	796	653	270	29	3	4108
1993-94	0	0	33	263	510	840	1028	700	546	169	156	7	4252
1994-95	0	1	22	262	401	631	808	775	446	249	82	0	3677
1995-96	0	0	49	212	657	894	958	792	716	287	128	4	4697
1996-97	0	0	64	265	734	778	926	663	546	414	229	65	4684
1997-98	2	3	45	326	668	860	765	673	635	296	69	25	4367
1998-99	0	0	25	257	538	720	819	692	691	285	90	17	4134
1999-00	6	1	54	328	409	771	960	683	460	322	75	6	4075
2000-01	2	0	101	253	654	1113	930	658	688	270	101	8	4778
2001-02	7	0	95	333	423	709	793	675	569	258	142	2	4006
2002-03	2	2	9	283	594	900	1015	820	489	273	133	28	4548
2003-	0	0	43	310	406	880							

WBAN : 13733

COOLING DEGREE DAYS (base 65°F) 2003 LYNCHBURG, VA (LYH)

YEAR	JAN	FEB	MAR	APR	MAY	JUN	JUL	AUG	SEP	OCT	NOV	DEC	ANNUAL
1974	0	0	3	30	75	113	298	296	103	7	10	0	935
1975	0	0	0	6	108	209	282	365	103	14	4	0	1091
1976	0	0	3	57	37	190	289	259	80	13	0	0	928
1977	0	0	5	38	129	184	424	349	167	9	8	0	1313
1978	0	0	0	9	88	237	305	389	212	5	0	0	1245
1979	0	0	11	12	54	143	298	322	121	21	0	0	982
1980	0	0	0	15	99	159	403	432	262	18	0	0	1388
1981	0	0	0	35	59	331	361	265	101	11	0	0	1163
1982	0	0	0	3	113	183	339	272	153	49	3	4	1119
1983	0	0	0	10	45	227	394	422	193	17	0	0	1308
1984	0	0	0	17	65	296	265	314	115	81	0	1	1154
1985	0	1	13	65	83	215	316	268	163	29	2	0	1155
1986	0	0	3	23	82	295	434	254	149	52	0	0	1292
1987	0	0	0	12	122	297	454	395	166	0	0	0	1446
1988	0	0	1	7	65	234	420	421	94	3	0	0	1245
1989	0	0	13	22	70	276	339	281	150	26	0	0	1177
1990	0	0	25	35	62	193	335	266	127	31	0	0	1074
1991	0	0	2	22	182	267	424	330	194	30	1	0	1452
1992	0	0	0	18	50	181	415	252	171	8	0	0	1095
1993	0	0	0	9	118	277	489	403	213	17	9	0	1535
1994	0	0	0	55	39	285	365	255	81	6	2	0	1088
1995	0	0	0	22	91	223	400	406	115	30	0	0	1287
1996	0	0	0	18	127	273	316	229	88	6	0	0	1057
1997	0	0	0	0	21	164	318	230	80	22	0	0	835
1998	0	0	16	8	97	241	309	286	224	6	0	2	1189
1999	0	0	0	18	28	169	398	318	84	5	0	0	1020
2000	0	0	1	2	92	245	229	231	105	15	0	0	920
2001	0	0	0	42	29	220	200	309	81	2	0	0	883
2002	0	0	0	47	83	257	370	350	161	46	0	0	1314
2003	0	0	1	17	39	144	279	322	81	1	5	0	889

SNOWFALL (inches) 2003 LYNCHBURG, VA (LYH)

YEAR	JUL	AUG	SEP	OCT	NOV	DEC	JAN	FEB	MAR	APR	MAY	JUN	TOTAL
1974-75	0.0	0.0	0.0	0.0	0.6	0.6	6.5	4.4	3.8	0.0	0.0	0.0	15.9
1975-76	0.0	0.0	0.0	0.0	0.0	0.1	T	1.2	0.6	0.0	0.0	0.0	1.9
1976-77	0.0	0.0	0.0	0.0	T	2.8	10.0	0.3	0.0	0.0	0.0	0.0	13.1
1977-78	0.0	0.0	0.0	0.0	0.7	0.3	10.8	5.9	8.1	0.0	0.0	0.0	25.8
1978-79	0.0	0.0	0.0	0.0	T	T	4.0	19.2	0.0	0.0	0.0	0.0	23.2
1979-80	0.0	0.0	0.0	2.4	0.0	T	14.2	7.5	8.9	0.0	0.0	0.0	33.0
1980-81	0.0	0.0	0.0	0.0	0.0	T	3.8	0.0	3.6	0.0	0.0	0.0	7.4
1981-82	0.0	0.0	0.0	0.0	3.7	5.9	7.6	15.1	0.2	2.5	0.0	0.0	35.0
1982-83	0.0	0.0	0.0	0.0	0.0	6.8	0.5	18.6	T	T	0.0	0.0	25.9
1983-84	0.0	0.0	0.0	0.0	0.0	T	3.8	0.1	0.4	T	0.0	0.0	4.3
1984-85	0.0	0.0	0.0	0.0	T	0.0	6.4	T	0.5	0.0	0.0	0.0	6.9
1985-86	0.0	0.0	0.0	0.0	0.0	1.2	2.5	8.2	T	0.0	0.0	0.0	11.9
1986-87	0.0	0.0	0.0	0.0	T	T	28.3	13.5	3.1	0.2	0.0	0.0	45.1
1987-88	0.0	0.0	0.0	0.0	1.2	0.0	8.3	0.0	0.0	T	0.0	0.0	9.5
1988-89	0.0	0.0	0.0	0.0	0.0	3.5	0.3	10.1	1.0	T	0.0	0.0	14.9
1989-90	0.0	0.0	0.0	0.0	1.0	11.2	T	0.2	5.5	0.0	0.0	0.0	17.9
1990-91	0.0	0.0	0.0	0.0	0.0	1.0	0.0	1.4	1.7	0.0	0.0	0.0	4.1
1991-92	0.0	0.0	0.0	0.0	T	T	T	0.8	0.9	1.4	0.0	0.0	3.1
1992-93	0.0	0.0	0.0	0.0	T	T	T	5.4	13.0	T	0.0	0.0	18.4
1993-94	0.0	0.0	0.0	T	0.0	5.4	3.1	2.0	1.3	0.0	0.0	0.0	11.8
1994-95	0.0	0.0	0.0	0.0	0.0	0.0	5.4	0.6	1.0	0.0	0.0	0.0	7.0
1995-96	0.0	0.0	0.0	0.0	T	6.5	25.3	19.5	5.5	T	T	0.0	56.8
1996-97	0.0												
1997-98													
1998-99													
1999-00													
2000-01													
2001-02													
2002-03													
2003-													
POR= 51 YRS	0.0	0.0	0.0	0.0	0.7	2.9	5.6	5.3	3.4	0.2	T	0.0	18.1

WBAN : 13733

REFERENCE NOTES:

<p>PAGE 1: THE TEMPERATURE GRAPH SHOWS NORMAL MAXIMUM AND NORMAL MINIMUM DAILY TEMPERATURES (SOLID CURVES) AND THE ACTUAL DAILY HIGH AND LOW TEMPERATURES (VERTICAL BARS).</p> <p>PAGE 2 AND 3: H/C INDICATES HEATING AND COOLING DEGREE DAYS. RH INDICATES RELATIVE HUMIDITY W/O INDICATES WEATHER AND OBSTRUCTIONS S INDICATES SUNSHINE. PR INDICATES PRESSURE. CLOUDINESS ON PAGE 3 IS THE SUM OF THE CEILOMETER AND SATELLITE DATA NOT TO EXCEED EIGHT EIGHTHS (OKTAS).</p> <p>GENERAL: T INDICATES TRACE PRECIPITATION, AN AMOUNT GREATER THAN ZERO BUT LESS THAN THE LOWEST REPORTABLE VALUE. + INDICATES THE VALUE ALSO OCCURS ON EARLIER DATES. BLANK ENTRIES DENOTE MISSING OR UNREPORTED DATA. NORMALS ARE 30-YEAR AVERAGES (1971 - 2000). ASOS INDICATES AUTOMATED SURFACE OBSERVING SYSTEM. PM INDICATES THE LAST DAY OF THE PREVIOUS MONTH. POR (PERIOD OF RECORD) BEGINS WITH THE JANUARY DATA MONTH AND IS THE NUMBER OF YEARS USED TO COMPUTE THE MEAN. INDIVIDUAL MONTHS WITHIN THE POR MAY BE MISSING. WHEN THE POR FOR A NORMAL IS LESS THAN 30 YEARS, THE NORMAL IS PROVISIONAL AND IS BASED ON THE NUMBER OF YEARS INDICATED. 0.* OR * INDICATES THE VALUE OR MEAN-DAYS-WITH IS BETWEEN 0.00 AND 0.05. CLOUDINESS FOR ASOS STATIONS DIFFERS FROM THE NON-ASOS OBSERVATION TAKEN BY A HUMAN OBSERVER. ASOS STATION CLOUDINESS IS BASED ON TIME-AVERAGED CEILOMETER DATA FOR CLOUDS AT OR BELOW 12,000 FEET AND ON SATELLITE DATA FOR CLOUDS ABOVE 12,000 FEET. THE NUMBER OF DAYS WITH CLEAR, PARTLY CLOUDY, AND CLOUDY CONDITIONS FOR ASOS STATIONS IS THE SUM OF THE CEILOMETER AND SATELLITE DATA FOR THE SUNRISE TO SUNSET PERIOD.</p>	<p>GENERAL CONTINUED: CLEAR INDICATES 0 - 2 OKTAS, PARTLY CLOUDY INDICATES 3 - 6 OKTAS, AND CLOUDY INDICATES 7 OR 8 OKTAS. WHEN AT LEAST ONE OF THE ELEMENTS (CEILOMETER OR SATELLITE) IS MISSING, THE DAILY CLOUDINESS IS NOT COMPUTED. WIND DIRECTION IS RECORDED IN TENS OF DEGREES (2 DIGITS) CLOCKWISE FROM TRUE NORTH. "00" INDICATES CALM. "36" INDICATES TRUE NORTH. RESULTANT WIND IS THE VECTOR AVERAGE OF THE SPEED AND DIRECTION. AVERAGE TEMPERATURE IS THE SUM OF THE MEAN DAILY MAXIMUM AND MINIMUM TEMPERATURE DIVIDED BY 2. SNOWFALL DATA COMPRISE ALL FORMS OF FROZEN PRECIPITATION, INCLUDING HAIL. A HEATING (COOLING) DEGREE DAY IS THE DIFFERENCE BETWEEN THE AVERAGE DAILY TEMPERATURE AND 65° F. DRY BULB IS THE TEMPERATURE OF THE AMBIENT AIR. DEW POINT IS THE TEMPERATURE TO WHICH THE AIR MUST BE COOLED TO ACHIEVE 100 PERCENT RELATIVE HUMIDITY. WET BULB IS THE TEMPERATURE THE AIR WOULD HAVE IF THE MOISTURE CONTENT WAS INCREASED TO 100 PERCENT RELATIVE HUMIDITY.</p> <p>ON JULY 1, 1996, THE NATIONAL WEATHER SERVICE BEGAN USING THE "METAR" OBSERVATION CODE THAT WAS ALREADY EMPLOYED BY MOST OTHER NATIONS OF THE WORLD. THE MOST NOTICEABLE DIFFERENCE IN THIS ANNUAL PUBLICATION WILL BE THE CHANGE IN UNITS FROM TENTHS TO EIGHTS (OKTAS) FOR REPORTING THE AMOUNT OF SKY COVER.</p>
--	---

2003
LYNCHBURG,
VIRGINIA (LYH)

Lynchburg is situated in the valley of the James River, and on the eastern edge of the Blue Ridge Mountains. The terrain is definitely hilly, with sheltered valleys which are visited by early autumn and late spring frosts. The climate is usually a pleasant one, being neither too hot in the summer, nor too cold in the winter. Rainfall is fairly evenly distributed throughout the year, but there is a distinct summertime rainfall, occasioned by afternoon thunderstorms.

Spring makes itself felt in March, when the mean monthly temperature increases about 7 degrees over the February temperature. Autumn rapidly comes in October, which shows about a 10 degree drop below the September mean. The approaching autumn season brings periods of two to three days of cloudy, cool weather, with high humidity and light rain or drizzle. In midwinter, however, after the passage of a cold front, dry invigorating air, with clear skies, is the rule in Lynchburg. There are occasional snow showers, but the mountains to the immediate west act as a barrier and shelter the area from many storms and high winds.

The mountains also act as a barrier to extremely cold weather. Temperatures have fallen below zero only on a few days, and 100 degree heat is almost as rare, although this mark has been exceeded in the months of May through September.

Great variation in temperature is quite frequently noted during clear, still nights in the winter months. On some such nights, differences of as much as 10-15 degrees occur between the low valleys and the higher terrain.

Based on the 1951-1980 period, the average first occurrence of 32 degrees Fahrenheit in the fall is October 23 and the average last occurrence in the spring is April 13.

STATION LOCATION

LYNCHBURG, VIRGINIA

LOCATION	Occupied From	Occupied To	Airline Distances and Directions from previous Location	LATITUDE NORTH	LONGITUDE WEST	ELEVATION ABOVE										AUTOMATIC OBSERVING EQUIPMENT * REMARKS
						SEA LEVEL GROUND SURFACE	GROUND								HYGROMETER	
							WIND INSTRUMENT	EXTREME THERMOMETER	PSYCHROMETER	SUNSHINE SWITCH	TIPPING BUCKET	WEIGHING RAIN GAGE	8 INCH RAIN GAGE			
*NOTE: <u>AIRPORT</u> Tower Building Municipal Airport	1/26/63	08/01/96	600 ft. W	37°20'	79°12'	964 f916 i921	20 g32 h32	5	5	1006	3	5	3	e4 h4 j4	e. Commissioned 1425' SSW of thermometer site 6/30/63. f. Effective 6/30/63. g. Raised 6/3/77. h. Relocated 10/22/80. i. Effective 10/22/80. j. Type change 6/19/85.	
Municipal Airport	08/01/96	Present	NA	37°20'	79°12'	k997								S	ASOS Commissioned 08/01/96 k. Ground Elevation	

For Hard Copy Subscription:

Price and ordering information: NCDC Subscribing Service Center, 310 State Route 956, Building 300, Rocket Center, WV 26726.

INQUIRIES/COMMENTS CALL: Toll Free (866) 742-3322

Visit our Web Site for other weather data: www.ncdc.noaa.gov

Non-Subscription Request:

NCDC Customer Services;

Phone: 828-271-4800

Fax: 828-271-4876

Email: ncdc.orders@noaa.gov

OFFICIAL BUSINESS

PENALTY FOR PRIVATE USE \$300

CHANGE SERVICE REQUESTED

FIRST CLASS
POSTAGE & FEES PAID
 United States Department of Commerce
 NOAA Permit No. G - 19

* NOTES: For earlier station history see previous editions.