

2004

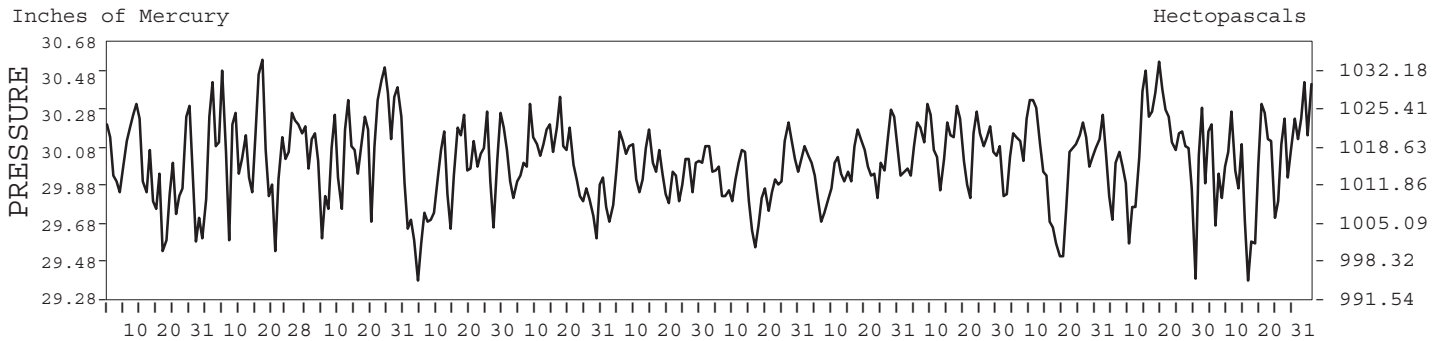
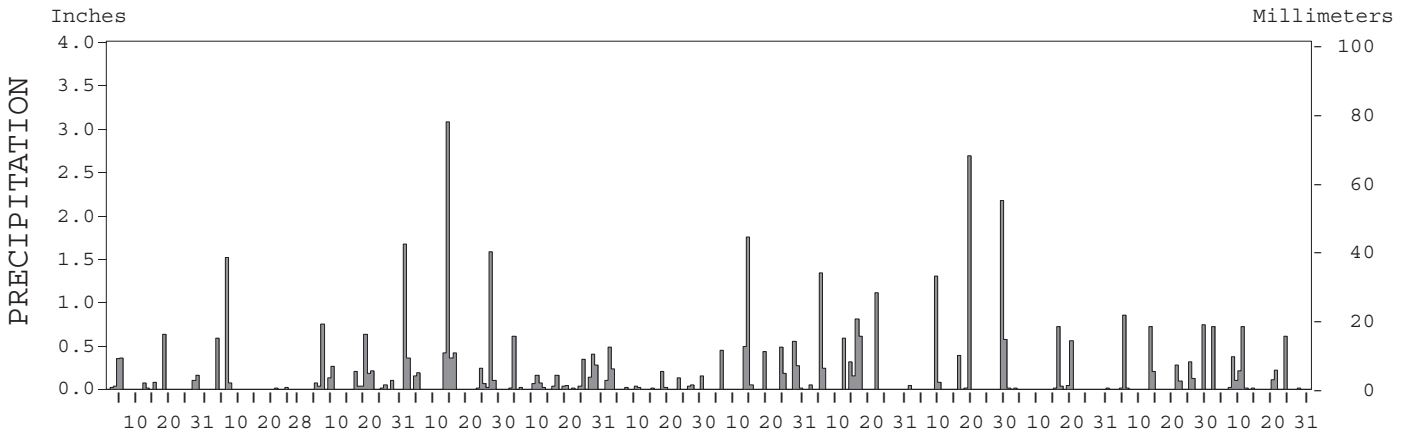
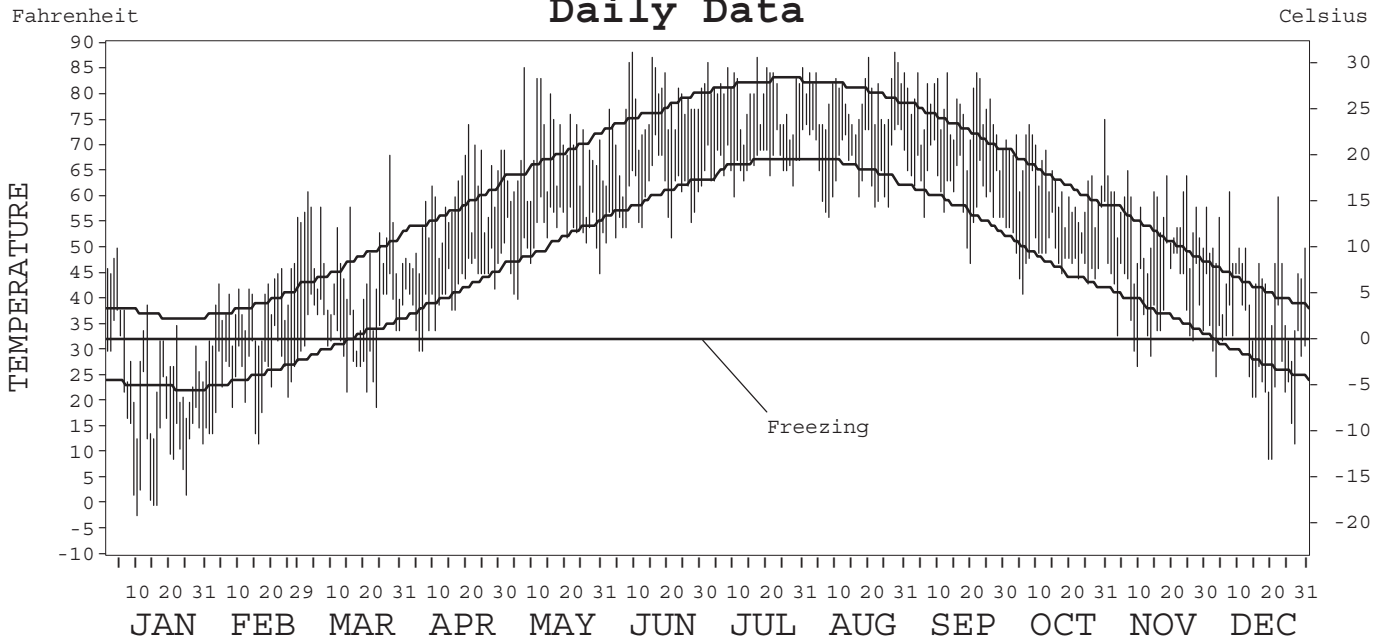
LOCAL CLIMATOLOGICAL DATA ANNUAL SUMMARY WITH COMPARATIVE DATA



ISSN 0198-1129

BRIDGEPORT, CONNECTICUT (BDR)

Daily Data



I CERTIFY THAT THIS IS AN OFFICIAL PUBLICATION OF THE NATIONAL OCEANIC AND ATMOSPHERIC ADMINISTRATION, AND IS COMPILED FROM RECORDS ON FILE AT THE NATIONAL CLIMATIC DATA CENTER.

NATIONAL OCEANIC AND ATMOSPHERIC ADMINISTRATION	NATIONAL ENVIRONMENTAL SATELLITE, DATA, AND INFORMATION SERVICE	NATIONAL CLIMATIC DATA CENTER ASHEVILLE, NORTH CAROLINA	DIRECTOR NATIONAL CLIMATIC DATA CENTER
-------------------------------------------------------	-----------------------------------------------------------------------	---------------------------------------------------------------	-------------------------------------------

METEOROLOGICAL DATA FOR 2004

BRIDGEPORT, CT (BDR)

LATITUDE: 41° 10' 30" N LONGITUDE: 73° 08' 44" W ELEVATION (FT): GRND: 8 BARO: 11 TIME ZONE: EASTERN (UTC + 5) WBAN: 94702

	ELEMENT	JAN	FEB	MAR	APR	MAY	JUN	JUL	AUG	SEP	OCT	NOV	DEC	YEAR	
TEMPERATURE °F	MEAN DAILY MAXIMUM	28.6	39.8	46.7	58.0	68.7	76.5	79.9	79.5	76.4	63.6	55.3	44.2	59.8	
	HIGHEST DAILY MAXIMUM	50	56	68	74	85	88	87	88	84	75	65	61	88	
	DATE OF OCCURRENCE	04	28	27	20	07	09	17	28	22+	31	07	08	AUG 28	
	MEAN DAILY MINIMUM	15.1	24.6	33.2	41.7	52.3	59.9	66.5	66.2	61.2	49.4	39.8	28.7	44.9	
	LOWEST DAILY MINIMUM	-2	12	19	30	40	51	60	56	47	41	27	9	-2	
	DATE OF OCCURRENCE	10	16	23	06+	05	01	10	08	20	06	10	21+	JAN 10	
	AVERAGE DRY BULB	21.9	32.2	40.0	49.9	60.5	68.2	73.2	72.9	68.8	56.5	47.6	36.5	52.4	
	MEAN WET BULB		27.7	36.0	44.4	56.2		67.9	68.1	62.9		42.4	32.9		
	MEAN DEW POINT		17.5	29.5	37.7	52.8		65.0	65.1	58.7		34.6	24.8		
	NUMBER OF DAYS WITH:														
	MAXIMUM ≥ 90°	0	0	0	0	0	0	0	0	0	0	0	0	0	0
	MAXIMUM ≤ 32°	22	6	1	0	0	0	0	0	0	0	0	4	33	
	MINIMUM ≤ 32°	28	28	14	2	0	0	0	0	0	0	4	19	95	
MINIMUM ≤ 0°	3	0	0	0	0	0	0	0	0	0	0	0	3		
H/C	HEATING DEGREE DAYS	1329	945	768	448	157	30	0	0	19	263	514	879	5352	
	COOLING DEGREE DAYS	0	0	0	0	23	134	262	251	141	6	0	0	817	
RH	MEAN (PERCENT)	59	57	71	69	80	73	77	78	71	67	62	63	69	
	HOUR 01 LST	64	61	75	74	88	84	85	87	78	74	65	66	75	
	HOUR 07 LST	66	66	78	75	85	78	81	84	78	74	67	70	75	
	HOUR 13 LST	51	51	63	60	70	60	65	67	61	55	54	56	59	
	HOUR 19 LST	57	57	69	64	78	68	77	75	68	65	62	61	67	
S	PERCENT POSSIBLE SUNSHINE														
W/O	NUMBER OF DAYS WITH:														
	HEAVY FOG (VISBY ≤ 1/4 MI)	3	0	3	6	11	2	1	0	0	2	0	1	29	
	THUNDERSTORMS	0	0	0	0	0	0	0	0	0	0	0	0	0	
CLOUDINESS	SUNRISE-SUNSET: (OKTAS)														
	CEILOMETER (≤ 12,000 FT.)														
	SATELLITE (> 12,000 FT.)														
	MIDNIGHT-MIDNIGHT: (OKTAS)														
	CEILOMETER (≤ 12,000 FT.)														
	SATELLITE (> 12,000 FT.)														
NUMBER OF DAYS WITH:															
CLEAR															
PARTLY CLOUDY															
CLOUDY															
PR	MEAN STATION PRESS. (IN.)	29.95	30.12	30.13	29.93	30.01	29.98	29.94	29.99	30.11	30.02	30.12	30.03	30.03	
	MEAN SEA-LEVEL PRESS. (IN.)	29.97	30.13	30.14	29.95	30.03	30.00	29.95	30.01	30.13	30.04	30.13	30.05	30.04	
WINDS	RESULTANT SPEED (MPH)	7.8	5.1	2.2	2.5	1.4	2.7	1.9	0.8	1.7	3.2	3.1			
	RES. DIR. (TENS OF DEGS.)	32	34	02	01	15	24	19	26	05	35	33			
	MEAN SPEED (MPH)	10.9	9.1	9.7	9.7	8.2	7.6	8.2	7.6	8.4	9.1	9.4	10.2	9.0	
	PREVAIL. DIR. (TENS OF DEGS.)	30	33	10	24	09	24	24	23	01	03	36	25	25	
	MAXIMUM 2-MINUTE WIND:														
	SPEED (MPH)	36	31	35	32	28	22	29	28	32	23	40	39	40	
	DIR. (TENS OF DEGS.)	33	09	31	32	10	32	09	32	03	04	31	30	31	
	DATE OF OCCURRENCE	13	03	12+	05	23	29	13	21	18	22	05	01	NOV 05	
	MAXIMUM 5-SECOND WIND:														
	SPEED (MPH)	45	38	45	38	35	28	35	35	43	31	53	47	53	
DIR. (TENS OF DEGS.)	31	09	31	32	32	32	09	33	02	33	30	31	30		
DATE OF OCCURRENCE	13	03	12	05	29	29	13	21	18	12	05	01	NOV 05		
PRECIPITATION	WATER EQUIVALENT:														
	TOTAL (IN.)	1.81	2.21	4.35	6.99	2.51	1.37	4.66	5.25	7.22	1.38	3.33	3.11	44.19	
	GREATEST 24-HOUR (IN.)	0.63	1.55	1.67	3.18	0.61	0.48	2.24	1.57	2.72	0.72	0.92	0.86	3.18	
	DATE OF OCCURRENCE	18	06-07	31	12-13	03	01	12-13	04-05	28-29	15	12-13	09-10	APR 12-13	
	NUMBER OF DAYS WITH:														
	PRECIPITATION ≥ 0.01	10	5	15	13	18	12	10	10	8	7	10	12	130	
PRECIPITATION ≥ 0.10	5	2	9	10	8	5	8	8	5	2	7	8	77		
PRECIPITATION ≥ 1.00	0	1	1	2	0	0	1	2	3	0	0	0	10		
SNOWFALL	SNOW, ICE PELLETS, HAIL:														
	TOTAL (IN.)														
	GREATEST 24-HOUR (IN.)														
	DATE OF OCCURRENCE														
	MAXIMUM SNOW DEPTH (IN.)														
	DATE OF OCCURRENCE														
NUMBER OF DAYS WITH:															
SNOWFALL ≥ 1.0															

NORMALS, MEANS, AND EXTREMES

BRIDGEPORT, CT (BDR)

LATITUDE: 41° 10' 30" N LONGITUDE: 73° 08' 44" W ELEVATION (FT): GRND: 8 BARO: 11 TIME ZONE: EASTERN (UTC + 5) WBAN: 94702

ELEMENT		POR	JAN	FEB	MAR	APR	MAY	JUN	JUL	AUG	SEP	OCT	NOV	DEC	YEAR
TEMPERATURE °F	NORMAL DAILY MAXIMUM	30	36.9	38.8	46.9	57.0	67.4	76.4	81.9	80.7	73.6	63.1	52.6	42.1	59.8
	MEAN DAILY MAXIMUM	56	36.8	38.6	46.0	57.0	67.1	76.5	82.1	80.8	74.0	63.9	52.8	41.6	59.8
	HIGHEST DAILY MAXIMUM	56	68	67	84	91	97	96	103	100	99	86	78	76	103
	YEAR OF OCCURRENCE		2002	1997	1990	1990	1996	1994	1957	2001	1953	1997	1993	1998	JUL 1957
	MEAN OF EXTREME MAXS.	56	53.6	54.0	63.4	75.9	83.3	90.0	92.9	90.8	85.7	77.4	67.6	58.2	74.4
	NORMAL DAILY MINIMUM	30	22.9	24.9	32.0	40.7	50.6	59.6	66.0	65.4	57.7	46.3	37.5	28.0	44.3
	MEAN DAILY MINIMUM	56	22.9	24.3	30.9	40.1	50.0	59.5	65.7	64.9	57.6	46.9	37.9	27.7	44.0
	LOWEST DAILY MINIMUM	56	-7	-5	4	18	31	41	49	44	36	26	16	-4	-7
	YEAR OF OCCURRENCE		1984	1963	1967	1982	1966	1967	1988	1963	1988	1972	1980		JAN 1984
	MEAN OF EXTREME MINS.	56	5.8	7.8	16.4	28.9	39.3	48.7	56.4	53.7	43.3	33.1	24.2	11.4	30.8
	NORMAL DRY BULB	30	29.9	31.9	39.5	48.9	59.0	68.0	74.0	73.1	65.7	54.7	45.1	35.1	52.1
	MEAN DRY BULB	56	29.8	31.5	38.6	48.6	58.5	68.1	73.8	72.9	65.7	55.5	45.4	34.6	51.9
	MEAN WET BULB	15	28.5	29.4	35.2	44.0	54.1	62.8	68.1	63.7	57.9	48.1	41.4	32.8	47.2
	MEAN DEW POINT	15	19.7	20.1	25.7	34.4	48.3	58.0	63.8	59.6	53.6	42.5	34.9	25.4	40.5
	NORMAL NO. DAYS WITH:														
MAXIMUM ≥ 90°	30	0.0	0.0	0.0	*	0.2	1.0	3.4	1.8	0.3	0.0	0.0	0.0	6.7	
MAXIMUM ≤ 32°	30	9.7	7.0	1.2	*	0.0	0.0	0.0	0.0	0.0	0.0	0.2	4.5	22.6	
MINIMUM ≤ 32°	30	26.0	22.2	16.1	2.9	0.0	0.0	0.0	0.0	0.0	0.7	7.8	20.8	96.5	
MINIMUM ≤ 0°	30	0.5	0.1	0.0	0.0	0.0	0.0	0.0	0.0	0.0	0.0	0.0	0.1	0.7	
H/C	NORMAL HEATING DEG. DAYS	30	1089	943	803	489	207	32	2	4	68	320	591	918	5466
	NORMAL COOLING DEG. DAYS	30	0	0	0	1	21	125	286	258	91	7	0	0	789
RH	NORMAL (PERCENT)	30	66	65	63	63	69	71	71	72	72	70	68		
	HOUR 01 LST	30	69	70	70	70	80	83	82	83	82	79	74		
	HOUR 07 LST	30	72	72	72	70	76	78	78	80	82	81	76	74	76
	HOUR 13 LST	30	61	58	56	54	60	60	61	61	62	59	59	60	59
	HOUR 19 LST	30	66	64	61	62	67	69	69	72	72	70	67	66	67
S	PERCENT POSSIBLE SUNSHINE														
W/O	MEAN NO. DAYS WITH:														
	HEAVY FOG (VISBY ≤ 1/4 MI)	41	3.2	2.7	3.3	3.0	4.4	3.7	1.8	1.1	1.2	1.5	1.6	1.8	29.3
	THUNDERSTORMS	41	0.1	0.3	0.9	1.7	2.8	3.3	4.3	3.6	1.7	0.8	0.3	0.1	19.9
CLOUDINESS	MEAN:														
	SUNRISE-SUNSET (OKTAS)	47	5.0	4.9	5.0	5.1	5.2	4.8	4.7	4.5	4.5	4.2	4.9	4.9	4.8
	MIDNIGHT-MIDNIGHT (OKTAS)	17	4.3	4.3	4.6	4.4	4.8	4.6	4.4	4.4	4.1	4.0	4.6	4.7	4.4
	MEAN NO. DAYS WITH:														
	CLEAR	47	8.2	8.4	8.0	7.1	6.7	7.7	7.4	8.8	9.6	10.9	7.9	8.3	99.0
PARTLY CLOUDY	47	7.8	6.8	8.6	8.6	10.1	10.1	12.0	10.6	8.8	8.1	7.7	7.7	106.9	
CLOUDY	47	15.0	13.1	14.5	14.3	14.2	12.2	11.6	11.5	11.5	12.0	14.4	14.9	159.2	
PR	MEAN STATION PRESSURE (IN)	16	30.02	30.05	30.00	29.96	29.95	29.97	29.96	30.01	30.03	30.04	30.02	30.03	30.00
	MEAN SEA-LEVEL PRES. (IN)	21	30.06	30.06	30.03	29.98	29.97	30.01	29.99	30.03	30.06	30.09	30.07	30.07	30.04
WINDS	MEAN SPEED (MPH)	24	12.0	12.2	12.4	11.7	10.6	9.3	9.3	8.9	10.0	10.8	11.2	11.4	10.8
	PREVAIL. DIR (TENS OF DEGS)	16	30	31	32	24	23	24	24	23	24	36	29	27	24
	MAXIMUM 2-MINUTE:														
	SPEED (MPH)	8	41	45	47	39	40	39	33	36	36	38	44	44	47
	DIR. (TENS OF DEGS)		29	31	31	10	31	35	33	02	10	31	09	10	31
	YEAR OF OCCURRENCE		1999	1997	1997	2000	2000	2000	1997	2002	2003	2003	1997	2003	MAR 1997
	MAXIMUM 5-SECOND:														
SPEED (MPH)	8	51	56	62	49	48	53	47	47	45	46	53	53	62	
DIR. (TENS OF DEGS)		31	31	30	01	31	31	31	02	14	30	30	10	30	
YEAR OF OCCURRENCE		2002	1997	1997	1997	2000	2000	1997	2002	1999	2003	2004	2003	MAR 1997	
PRECIPITATION	NORMAL (IN)	30	3.73	2.92	4.15	3.99	4.03	3.57	3.77	3.75	3.58	3.54	3.65	3.47	44.15
	MAXIMUM MONTHLY (IN)	56	11.20	6.65	9.40	10.72	9.53	17.70	12.84	13.29	7.42	10.72	10.22	7.87	17.70
	YEAR OF OCCURRENCE		1979	1972	1953	1983	1989	1972	1971	1952	1960	1955	1972	1972	JUN 1972
	MINIMUM MONTHLY (IN)	56	0.40	0.43	0.69	0.69	0.41	0.07	0.47	0.72	0.43	0.33	0.36	0.33	0.07
	YEAR OF OCCURRENCE		1970	1987	1981	1985	1986	1949	1979	1981	1959	1963	1976	1955	JUN 1949
	MAXIMUM IN 24 HOURS (IN)	56	4.55	2.31	4.60	5.33	3.23	6.89	5.95	4.72	4.67	4.28	4.07	3.69	6.89
	YEAR OF OCCURRENCE		1979	1969	1977	1996	1968	1972	1971	1991	1960	1972	1954	1968	JUN 1972
	NORMAL NO. DAYS WITH:														
PRECIPITATION ≥ 0.01	30	11.0	9.8	11.1	10.3	11.4	10.7	8.5	9.2	8.6	8.2	9.8	11.4	120.0	
PRECIPITATION ≥ 1.00	30	0.7	0.7	1.0	1.2	1.0	0.7	1.2	1.0	0.8	0.9	0.9	0.8	10.9	
SNOWFALL	NORMAL (IN)	30	8.5	7.2	4.3	0.9	0.*	0.0	0.0	0.0	0.0	0.*	0.7	3.6	25.2
	MAXIMUM MONTHLY (IN)	49	26.2	27.9	21.8	11.8	T	0.0	T	T	0.0	0.5	6.6	16.2	27.9
	YEAR OF OCCURRENCE		1965	1994	1967	1996	1977		1991	1992		1987	1989	1963	FEB 1994
	MAXIMUM IN 24 HOURS (IN)	49	16.7	16.7	11.1	7.9	T	0.0	T	T	0.0	0.5	6.6	8.4	16.7
	YEAR OF OCCURRENCE		1978	1969	1967	1996	1977		1991	1992		1987	1989	1995	JAN 1978
	MAXIMUM SNOW DEPTH (IN)	47	17	140	11	6	0	0	0	0	0	0	5	150	150
	YEAR OF OCCURRENCE		1978	1958	1967	1982							1989	1948	DEC 1948
	NORMAL NO. DAYS WITH:														
SNOWFALL ≥ 1.0	30	2.4	2.0	1.4	0.3	0.0	0.0	0.0	0.0	0.0	0.0	0.2	1.0	7.3	

PRECIPITATION (inches) 2004 BRIDGEPORT, CT (BDR)

YEAR	JAN	FEB	MAR	APR	MAY	JUN	JUL	AUG	SEP	OCT	NOV	DEC	ANNUAL
1975	4.70	3.11	3.05	2.49	3.27	3.39	6.48	1.91	6.18	3.96	4.41	4.50	47.45
1976	5.56	3.20	2.75	2.38	3.15	2.62	2.09	6.16	1.52	6.62	0.36	2.59	39.00
1977	2.43	1.74	7.74	3.60	2.07	2.75	1.03	4.69	7.26	3.94	4.93	5.17	47.35
1978	7.91	1.34	3.95	1.97	5.12	1.59	2.59	5.90	3.75	2.54	1.74	4.76	43.16
1979	11.20	3.65	3.70	4.53	4.88	3.29	0.47	4.35	4.46	2.71	2.54	2.24	48.02
1980	1.02	1.07	7.05	7.03	2.69	2.52	5.97	2.38	2.39	4.12	3.95	0.95	41.14
1981	0.54	4.66	0.69	3.19	1.92	2.10	4.45	0.72	4.50	4.32	1.93	3.65	32.67
1982	5.50	2.47	2.76	3.83	3.02	11.53	3.31	3.14	1.30	1.52	3.13	1.10	42.61
1983	3.72	2.40	9.21	10.72	4.77	3.72	1.66	2.57	2.20	4.63	6.58	4.74	56.92
1984	1.52	4.72	3.49	4.37	8.14	3.53	6.54	1.23	2.24	2.79	1.83	2.56	42.96
1985	1.25	1.72	1.93	0.69	5.11	5.34	5.19	4.62	1.60	1.48	5.67	1.25	35.85
1986	2.66	3.05	2.32	1.65	0.41	3.16	5.74	2.43	0.85	2.14	4.91	4.41	33.73
1987	4.78	0.43	4.77	4.73	1.20	1.55	1.78	3.89	4.09	2.20	2.87	2.08	34.37
1988	2.65	3.64	2.36	1.59	2.65	0.79	8.53	1.86	2.26	3.26	7.58	1.63	38.80
1989	1.44	2.40	4.06	3.15	9.53	5.60	3.44	6.57	3.21	7.02	3.27	0.83	50.52
1990	4.01	1.94	2.10	4.87	6.89	1.91	2.83	6.47	1.75	5.72	1.89	3.53	43.91
1991	2.82	1.83	4.07	3.19	3.83	2.29	2.17	7.84	3.47	1.88	2.82	4.27	40.48
1992	1.92	2.12	3.64	1.89	2.85	5.13	3.76	8.38	5.32	2.42	4.46	4.30	46.19
1993	2.60	2.60	6.75	3.50	2.25	1.42	1.58	1.58	6.60	4.00	1.71	4.54	39.13
1994	5.12	3.17	5.74	2.85	3.42	1.51	1.82	4.95	4.46	1.06	3.13	3.73	40.96
1995	2.98	2.85	2.07	3.61	2.27	1.44	1.32	1.37	3.15	5.71	4.33	1.94	33.04
1996	4.91	2.67	2.75	9.42	2.31	3.63	5.94	1.34	4.79	7.78	3.35	6.47	55.36
1997	2.95	2.15	4.89	3.39	3.04	1.44	4.20	4.97	0.60	2.07	3.87	3.23	36.80
1998	4.61	4.00	4.71	5.49	7.35	5.08	0.97	1.49	2.16	3.65	1.22	1.05	41.78
1999	6.42	4.01	3.27	1.81	3.77	0.97	0.78	4.34	6.88	3.23	3.08	2.39	40.95
2000	2.12	1.82	4.02	5.18	4.23	3.96	5.73	6.65	4.59	0.42	4.13	2.46	45.31
2001	2.79	1.67	6.91	1.57	3.41	3.79	2.10	6.01	2.41	1.00	0.79	2.03	34.48
2002	1.82	0.78	3.60	3.52	5.28	4.29	1.16	3.85	6.64	4.10	4.13	4.19	43.36
2003	1.80	4.49	4.12	3.58	5.24	7.25	1.97	5.36	3.91	3.89	2.30	3.82	47.73
2004	1.81	2.21	4.35	6.99	2.51	1.37	4.66	5.25	7.22	1.38	3.33	3.11	44.19
POR= 101 YRS	3.53	3.19	4.00	3.89	3.78	3.29	3.03	4.05	3.60	3.30	3.65	3.59	42.90

WBAN : 94702

AVERAGE TEMPERATURE (°F) 2004 BRIDGEPORT, CT (BDR)

YEAR	JAN	FEB	MAR	APR	MAY	JUN	JUL	AUG	SEP	OCT	NOV	DEC	ANNUAL
1975	35.3	32.2	36.8	44.7	61.9	67.2	74.5	74.0	64.5	59.0	50.5	35.5	53.0
1976	26.9	36.3	40.2	51.1	56.9	70.4	71.5	73.1	65.4	53.5	42.4	29.9	51.5
1977	23.7	31.2	41.9	49.1	60.4	65.1	72.6	74.1	67.8	56.9	50.0	33.5	52.2
1978	26.6	24.1	35.6	46.9	56.8	66.4	73.2	75.0	64.2	55.4	47.2	36.2	50.6
1979	30.6	24.6	43.0	49.5	61.7	66.6	73.8	72.8	64.8	53.2	47.3	37.9	52.2
1980	31.7	28.1	37.0	48.1	60.4	67.3	75.8	75.9	68.4	55.4	43.2	31.3	51.9
1981	22.2	33.9	38.1	49.3	58.6	68.0	74.0	71.4	62.8	50.5	44.1	33.8	50.6
1982	22.9	32.8	37.9	46.3	59.6	63.9	72.9	69.3	64.1	52.9	47.0	38.7	50.7
1983	31.4	32.3	40.5	48.1	55.8	67.7	74.3	73.1	67.3	55.1	46.5	33.1	52.1
1984	26.6	36.5	34.1	47.9	57.8	71.0	73.1	74.8	63.3	57.7	45.0	40.2	52.3
1985	26.2	32.3	41.8	50.8	60.9	65.6	73.6	72.8	66.6	56.0	46.6	31.4	52.1
1986	30.6	29.2	39.9	50.6	61.1	66.8	73.1	70.7	64.7	54.3	42.3	35.5	51.6
1987	30.1	30.0	41.3	50.2	58.8	68.6	74.9	71.0	65.2	51.3	44.9	36.8	51.9
1988	26.4	31.2	39.4	48.1	59.4	68.2	75.5	75.6	64.6	50.5	45.9	32.7	51.5
1989	33.8	31.0	38.8	47.9	59.6	68.5	71.8	71.6	65.2	54.9	43.2	23.3	50.8
1990	36.7	35.0	40.1	49.2	56.9	69.1	73.9	73.9	65.6	59.6	46.6	40.0	53.9
1991	31.7	36.2	42.2	51.8	64.5	70.3	75.5	74.8	65.1	56.7	45.9	36.7	54.3
1992	32.2	33.8	37.1	46.5	58.0	67.1	71.1	70.4	65.0	52.1	44.7	36.0	51.2
1993	33.6	27.9	36.7	49.2	61.4	70.0	76.7	75.3	65.7	53.3	45.0	35.5	52.5
1994	23.4	26.2	37.5	50.6	58.6	71.8	78.5	72.0	65.4	54.9	48.9	38.7	52.2
1995	35.6	29.4	41.4	48.1	58.6	68.8	77.0	74.8	66.1	58.6	41.6	30.1	52.5
1996	28.4	30.8	36.2	48.7	57.4	68.2	71.2	72.6	66.3	54.0	40.7	39.1	51.1
1997	30.3	37.3	38.7	48.1	56.1	67.7	73.1	71.5	65.2	53.9	42.2	35.5	51.6
1998	36.7	37.9	41.0	49.3	60.9	66.8	73.7	74.2	67.4	55.1	45.7	39.3	54.0
1999	31.0	34.2	39.7	49.7	59.5	70.1	77.3	72.8	67.2	53.7	47.9	37.7	53.4
2000	28.6	34.0	43.2	47.5	59.6	68.5	70.4	70.8	64.7	54.0	43.6	29.6	51.2
2001	29.5	32.3	36.5	49.5	60.3	71.0	71.6	75.8	66.0	56.1	49.2	41.4	53.3
2002	36.4	36.8	40.6	51.3	57.2	68.7	76.0	74.9	67.8	53.7	42.9	33.7	53.3
2003	25.9	26.9	38.0	45.9	56.2	66.6	74.0	75.6	67.0	53.8	47.6	35.1	51.1
2004	21.9	32.2	40.0	49.9	60.5	68.2	73.2	72.9	68.8	56.5	47.6	36.5	52.4
POR= 102 YRS	28.7	30.8	38.1	48.1	58.5	67.9	73.4	72.0	65.2	54.7	44.3	33.6	51.3

HEATING DEGREE DAYS (base 65°F) 2004 BRIDGEPORT, CT (BDR)

YEAR	JUL	AUG	SEP	OCT	NOV	DEC	JAN	FEB	MAR	APR	MAY	JUN	TOTAL
1975-76	0	0	59	190	432	908	1174	826	762	420	251	37	5059
1976-77	0	7	59	356	673	1079	1274	940	710	470	160	62	5790
1977-78	4	3	52	248	442	970	1181	1136	904	536	265	43	5784
1978-79	4	0	92	290	524	889	1062	1126	675	460	114	23	5259
1979-80	8	13	84	360	523	833	1025	1064	862	499	159	39	5469
1980-81	0	0	41	297	646	1038	1320	865	831	465	214	18	5735
1981-82	0	1	102	445	619	959	1297	897	832	556	164	72	5944
1982-83	1	19	66	371	530	809	1034	914	754	501	280	29	5308
1983-84	0	8	73	320	550	981	1188	819	952	508	227	18	5644
1984-85	0	0	104	219	593	761	1197	908	713	423	138	43	5099
1985-86	0	2	54	278	541	1032	1060	997	772	425	174	41	5376
1986-87	3	23	68	345	673	908	1077	975	727	434	232	23	5488
1987-88	0	10	53	417	596	867	1186	974	787	499	195	45	5629
1988-89	6	3	62	449	569	995	958	945	804	505	180	19	5495
1989-90	0	7	88	305	648	1285	869	836	766	476	243	12	5535
1990-91	5	1	77	208	546	771	1023	799	700	396	106	14	4646
1991-92	0	0	91	268	566	871	1012	895	859	548	225	23	5358
1992-93	4	3	80	393	599	892	966	1036	871	465	127	27	5463
1993-94	2	0	89	358	597	909	1283	1080	843	425	208	7	5801
1994-95	0	1	39	306	473	807	905	993	724	498	203	6	4955
1995-96	0	0	56	204	695	1075	1128	984	888	484	258	15	5787
1996-97	0	1	62	334	721	794	1073	768	810	502	268	65	5398
1997-98	2	0	70	351	678	908	869	752	739	464	165	52	5050
1998-99	0	0	39	298	574	790	1047	857	780	452	179	14	5030
1999-00	0	5	36	343	507	839	1121	893	669	516	192	45	5166
2000-01	0	2	100	338	634	1090	1093	911	875	457	173	13	5686
2001-02	0	0	58	278	469	725	880	782	751	422	247	41	4653
2002-03	0	3	23	367	657	962	1204	1062	830	567	266	61	6002
2003-04	0	0	23	340	517	923	1329	945	768	448	157	30	5480
2004-	0	0	19	263	514	879							

WBAN : 94702

COOLING DEGREE DAYS (base 65°F) 2004 BRIDGEPORT, CT (BDR)

YEAR	JAN	FEB	MAR	APR	MAY	JUN	JUL	AUG	SEP	OCT	NOV	DEC	ANNUAL
1975	0	0	0	0	50	108	300	285	46	11	4	0	804
1976	0	0	0	10	6	205	204	266	78	6	0	0	775
1977	0	0	0	0	24	70	249	290	143	5	0	0	781
1978	0	0	0	0	19	93	264	318	76	1	0	0	771
1979	0	0	0	0	16	79	288	259	85	4	0	0	731
1980	0	0	0	0	23	114	338	346	148	6	0	0	975
1981	0	0	0	0	24	116	286	205	44	0	0	0	675
1982	0	0	0	0	9	46	253	158	45	2	0	0	513
1983	0	0	0	0	0	116	296	267	149	20	0	0	848
1984	0	0	0	0	7	207	258	313	61	0	0	0	846
1985	0	0	0	3	19	71	276	251	110	8	0	0	738
1986	0	0	0	0	60	103	263	204	66	18	0	0	714
1987	0	0	0	0	46	140	312	205	64	0	0	0	767
1988	0	0	0	0	30	148	339	341	57	6	0	0	921
1989	0	0	0	0	18	131	219	218	102	0	0	0	688
1990	0	0	0	10	0	142	288	282	104	47	0	0	873
1991	0	0	0	7	98	178	328	310	101	18	0	0	1040
1992	0	0	0	0	17	94	200	179	85	0	0	0	575
1993	0	0	0	0	22	182	371	324	117	1	2	0	1019
1994	0	0	0	0	17	215	423	225	57	0	0	0	937
1995	0	0	0	0	11	125	378	311	94	15	0	0	934
1996	0	0	0	0	31	119	199	241	104	0	0	0	694
1997	0	0	0	0	0	154	261	209	80	15	0	0	719
1998	0	0	0	0	45	112	279	292	118	0	0	0	846
1999	0	0	0	0	20	173	389	254	107	1	0	0	944
2000	0	0	0	0	31	156	176	191	97	2	0	0	653
2001	0	0	0	0	35	202	212	345	98	11	0	0	903
2002	0	0	0	17	13	160	346	318	115	22	0	0	991
2003	0	0	0	0	2	116	286	335	90	0	0	0	829
2004	0	0	0	0	23	134	262	251	141	6	0	0	817

SNOWFALL (inches) 2004 BRIDGEPORT, CT (BDR)

YEAR	JUL	AUG	SEP	OCT	NOV	DEC	JAN	FEB	MAR	APR	MAY	JUN	TOTAL
1975-76	0.0	0.0	0.0	0.0	T	8.6	12.3	3.1	5.4	0.0	0.0	0.0	29.4
1976-77	0.0	0.0	0.0	0.0	T	6.5	10.3	5.8	4.7	T	T	0.0	27.3
1977-78	0.0	0.0	0.0	0.0	1.0	3.5	23.2	15.9	9.1	0.0	0.0	0.0	52.7
1978-79	0.0	0.0	0.0	0.0	2.2	1.2	6.1	8.6	T	0.0	0.0	0.0	18.1
1979-80	0.0	0.0	0.0	T	0.0	0.9	0.7	1.7	6.3	0.0	0.0	0.0	9.6
1980-81	0.0	0.0	0.0	0.0	1.0	3.6	5.4	T	1.5	0.0	0.0	0.0	11.5
1981-82	0.0	0.0	0.0	0.0	0.0	3.1	9.0	T	1.6	6.0	0.0	0.0	19.7
1982-83	0.0	0.0	0.0	0.0	0.0	3.2	5.1	14.2	T	0.5	0.0	0.0	23.0
1983-84	0.0	0.0	0.0	0.0	T	0.6	11.5	T	8.4	0.0	0.0	0.0	20.5
1984-85	0.0	0.0	0.0	0.0	T	1.5	11.2	6.5	0.5	0.0	0.0	0.0	19.7
1985-86	0.0	0.0	0.0	0.0	1.0	3.5	2.0	11.0	T	T	0.0	0.0	17.5
1986-87	0.0	0.0	0.0	0.0	1.8	3.3	11.4	2.9	2.7	0.0	0.0	0.0	22.1
1987-88	0.0	0.0	0.0	0.5	0.9	1.8	15.5	2.1	2.1	T	0.0	0.0	22.9
1988-89					0.0	7.5	1.6	2.1	1.8	0.0	0.0	0.0	
1989-90	0.0	0.0	0.0	0.0	6.6	4.1	5.2	9.3	4.4	1.7	0.0	0.0	31.3
1990-91	0.0	0.0	0.0	0.0	0.0	7.1	6.3	5.6	3.0	0.0	0.0	0.0	22.0
1991-92	T	0.0	0.0	0.0	0.0	2.1	1.8	2.4	10.2	0.0	0.0	0.0	16.5
1992-93	0.0	T	0.0	0.0	0.0	2.4	3.3	9.5	13.7	0.0	0.0	0.0	28.9
1993-94	0.0	0.0	0.0	0.0	0.0	1.9	17.3	27.9	7.9	0.0	0.0	0.0	55.0
1994-95	0.0	0.0	0.0	0.0	T	T	1.3	8.0	T	T	0.0	0.0	9.3
1995-96	0.0	0.0	0.0	0.0	2.6	13.8	20.5	16.8	10.2	11.8			
1996-97				0.0	T		3.8	2.1	3.8	4.0			
1997-98													
1998-99													
1999-00													
2000-01													
2001-02													
2002-03													
2003-04													
2004-													
POR= 47 YRS	T	T	0.0	0.0	0.6	4.6	7.4	7.6	4.8	0.8	T	0.0	25.8

WBAN : 94702

REFERENCE NOTES:

<p>PAGE 1: THE TEMPERATURE GRAPH SHOWS NORMAL MAXIMUM AND NORMAL MINIMUM DAILY TEMPERATURES (SOLID CURVES) AND THE ACTUAL DAILY HIGH AND LOW TEMPERATURES (VERTICAL BARS).</p> <p>PAGE 2 AND 3: H/C INDICATES HEATING AND COOLING DEGREE DAYS. RH INDICATES RELATIVE HUMIDITY W/O INDICATES WEATHER AND OBSTRUCTIONS S INDICATES SUNSHINE. PR INDICATES PRESSURE. CLOUDINESS ON PAGE 3 IS THE SUM OF THE CEILOMETER AND SATELLITE DATA NOT TO EXCEED EIGHT EIGHTHS(OKTAS).</p> <p>GENERAL: T INDICATES TRACE PRECIPITATION, AN AMOUNT GREATER THAN ZERO BUT LESS THAN THE LOWEST REPORTABLE VALUE. + INDICATES THE VALUE ALSO OCCURS ON EARLIER DATES. BLANK ENTRIES DENOTE MISSING OR UNREPORTED DATA. NORMALS ARE 30-YEAR AVERAGES (1971 - 2000). ASOS INDICATES AUTOMATED SURFACE OBSERVING SYSTEM. PM INDICATES THE LAST DAY OF THE PREVIOUS MONTH. POR (PERIOD OF RECORD) BEGINS WITH THE JANUARY DATA MONTH AND IS THE NUMBER OF YEARS USED TO COMPUTE THE MEAN. INDIVIDUAL MONTHS WITHIN THE POR MAY BE MISSING. WHEN THE POR FOR A NORMAL IS LESS THAN 30 YEARS, THE NORMAL IS PROVISIONAL AND IS BASED ON THE NUMBER OF YEARS INDICATED. 0.* OR * INDICATES THE VALUE OR MEAN-DAYS-WITH IS BETWEEN 0.00 AND 0.05. CLOUDINESS FOR ASOS STATIONS DIFFERS FROM THE NON-ASOS OBSERVATION TAKEN BY A HUMAN OBSERVER. ASOS STATION CLOUDINESS IS BASED ON TIME-AVERAGED CEILOMETER DATA FOR CLOUDS AT OR BELOW 12,000 FEET AND ON SATELLITE DATA FOR CLOUDS ABOVE 12,000 FEET. THE NUMBER OF DAYS WITH CLEAR, PARTLY CLOUDY, AND CLOUDY CONDITIONS FOR ASOS STATIONS IS THE SUM OF THE CEILOMETER AND SATELLITE DATA FOR THE SUNRISE TO SUNSET PERIOD.</p>	<p>GENERAL CONTINUED: CLEAR INDICATES 0 - 2 OKTAS, PARTLY CLOUDY INDICATES 3 - 6 OKTAS, AND CLOUDY INDICATES 7 OR 8 OKTAS. WHEN AT LEAST ONE OF THE ELEMENTS (CEILOMETER OR SATELLITE) IS MISSING, THE DAILY CLOUDINESS IS NOT COMPUTED. WIND DIRECTION IS RECORDED IN TENS OF DEGREES (2 DIGITS) CLOCKWISE FROM TRUE NORTH. "00" INDICATES CALM. "36" INDICATES TRUE NORTH. RESULTANT WIND IS THE VECTOR AVERAGE OF THE SPEED AND DIRECTION. AVERAGE TEMPERATURE IS THE SUM OF THE MEAN DAILY MAXIMUM AND MINIMUM TEMPERATURE DIVIDED BY 2. SNOWFALL DATA COMPRISE ALL FORMS OF FROZEN PRECIPITATION, INCLUDING HAIL. A HEATING (COOLING) DEGREE DAY IS THE DIFFERENCE BETWEEN THE AVERAGE DAILY TEMPERATURE AND 65° F. DRY BULB IS THE TEMPERATURE OF THE AMBIENT AIR. DEW POINT IS THE TEMPERATURE TO WHICH THE AIR MUST BE COOLED TO ACHIEVE 100 PERCENT RELATIVE HUMIDITY. WET BULB IS THE TEMPERATURE THE AIR WOULD HAVE IF THE MOISTURE CONTENT WAS INCREASED TO 100 PERCENT RELATIVE HUMIDITY.</p> <p>ON JULY 1, 1996, THE NATIONAL WEATHER SERVICE BEGAN USING THE "METAR" OBSERVATION CODE THAT WAS ALREADY EMPLOYED BY MOST OTHER NATIONS OF THE WORLD. THE MOST NOTICEABLE DIFFERENCE IN THIS ANNUAL PUBLICATION WILL BE THE CHANGE IN UNITS FROM TENTHS TO EIGHTS(OKTAS) FOR REPORTING THE AMOUNT OF SKY COVER.</p>
---------------------------------------------------------------------------------------------------------------------------------------------------------------------------------------------------------------------------------------------------------------------------------------------------------------------------------------------------------------------------------------------------------------------------------------------------------------------------------------------------------------------------------------------------------------------------------------------------------------------------------------------------------------------------------------------------------------------------------------------------------------------------------------------------------------------------------------------------------------------------------------------------------------------------------------------------------------------------------------------------------------------------------------------------------------------------------------------------------------------------------------------------------------------------------------------------------------------------------------------------------------------------------------------------------------------------------------------------------------------------------------------------------------------------------------------------------------------------------------------------------------------------------------------------------------------------------------------------------------------------------------------------------------------------------------------------------------------------------------	--------------------------------------------------------------------------------------------------------------------------------------------------------------------------------------------------------------------------------------------------------------------------------------------------------------------------------------------------------------------------------------------------------------------------------------------------------------------------------------------------------------------------------------------------------------------------------------------------------------------------------------------------------------------------------------------------------------------------------------------------------------------------------------------------------------------------------------------------------------------------------------------------------------------------------------------------------------------------------------------------------------------------------------------------------------------------------------------------------------------------------------------------------------------------------------------------------------------------------------------------------------------------------------------------------------------------------------------------------------------------

2004
BRIDGEPORT,
CONNECTICUT (BDR)

The airport is located on Stratford Point, a peninsula jutting out into Long Island Sound. Station instrumentation is located approximately 1 mile from the sound. Land around the airport is flat, with marshes to the south. The terrain is of glacial origin, rising in a rolling, mostly wooded manner, to the foothills of the Berkshires, 30 miles to the north and northwest.

Cities in close proximity to the station are Bridgeport, Fairfield, and Milford, while Danbury, New Haven, Norwalk and Stamford are located within a 35-mile radius.

The most pronounced topographical effect is the land-sea breeze, an occurrence generally associated with the spring through early autumn months.

Mean monthly temperatures during the summer months average 3 to 5 degrees lower than nearby inland stations because of the sea-breeze effect. Temperatures during the fall and winter months are moderated because of the proximity of Long Island Sound.

Winter snowfall is generally around 10 inches less than areas a few miles inland, also due to the proximity of the station to Long Island Sound.

One of the hazards along the coastal areas is the flooding of low-lying areas (usually during periods of high tide) with the approach of slow-moving deepening low pressure systems, resulting in 3 to 5 feet higher tides than normal.

STATION LOCATION

BRIDGEPORT, CONNECTICUT

LOCATION	Occupied From	Occupied To	Airline Distances and Directions from previous Location	LATITUDE		ELEVATION ABOVE											* TYPE	REMARKS
				NORTH	WEST	GROUND												
						SEA LEVEL	WIND INSTRUMENT	EXTREME THERMOMETERS	PSYCHROMETER	SUNSHINE SWITCH	TIPPING GAUGE	WEIGHING RAIN GAUGE	8 INCH RAIN GAUGE	HYGROMETER	AUTOMATIC OBSERVING			
*NOTES:																		
AIRPORT																		
Administration Building Municipal Airport Bridgeport, Connecticut	3/19/38	2/3/48	4.2 mi. SE	41° 10'	73° 08' 7	7	27		5							4		
2nd Floor, Adm. Building Municipal Airport Bridgeport, Connecticut	2/3/48	6/19/61	Same	41° 10'	73° 08' 7	7	48	5	5				3		3			
Bridgeport Municipal AP+ Stratford, Connecticut	6/19/61	5/01/96	1400 ft. SW	41° 10'	73° 08' 7	7	84 f33 g80 j27	45 b4 h45	45 b4 h45 i	NA	NA c4 m4	50 d4 e45	4 e45	NA a4 k4	NA	NA	a.	Commissioned 710 feet NNE of thermometer site 6/30/65.
+Sikorsky Memorial AP (Effective 1973)																	b.	Moved to field site 6/30/65.
																	c.	Installed 11/24/65.
																	d.	Moved to field site 11/5/66.
																	e.	Moved to roof 7/15/70.
																	f.	Moved from roof to a mast E of runways 4/18/74. Equipment inoperative 4/1976.
																	g.	Effective 4/1976.
																	h.	Returned to roof site 4/1978.
																	i.	Removed prior to 6/1980.
																	j.	Moved to Center Field 10/30/81.
																	k.	Type change 7/10/85.
																	m.	Shield removed 7/10/85.
Sikorsky Memorial AP	5/01/96	Present	NA	41°11'	73°09'	n8										S	ASOS Commissioned 05/01/96	
																	n.	Ground elevation.

For Hard Copy Subscription:

Price and ordering information: NCDC Subscribing Service Center, 310 State Route 956, Building 300, Rocket Center, WV 26726.

INQUIRIES/COMMENTS CALL: Toll Free (866) 742-3322

Visit our Web Site for other weather data: www.ncdc.noaa.gov

Non-Subscription Request:

NCDC Customer Services;

Phone: 828-271-4800

Fax: 828-271-4876

Email: ncdc.orders@noaa.gov

OFFICIAL BUSINESS

PENALTY FOR PRIVATE USE \$300

CHANGE SERVICE REQUESTED

FIRST CLASS
POSTAGE & FEES PAID
 United States Department of Commerce
 NOAA Permit No. G - 19

* NOTES: For earlier station history see previous edition.