

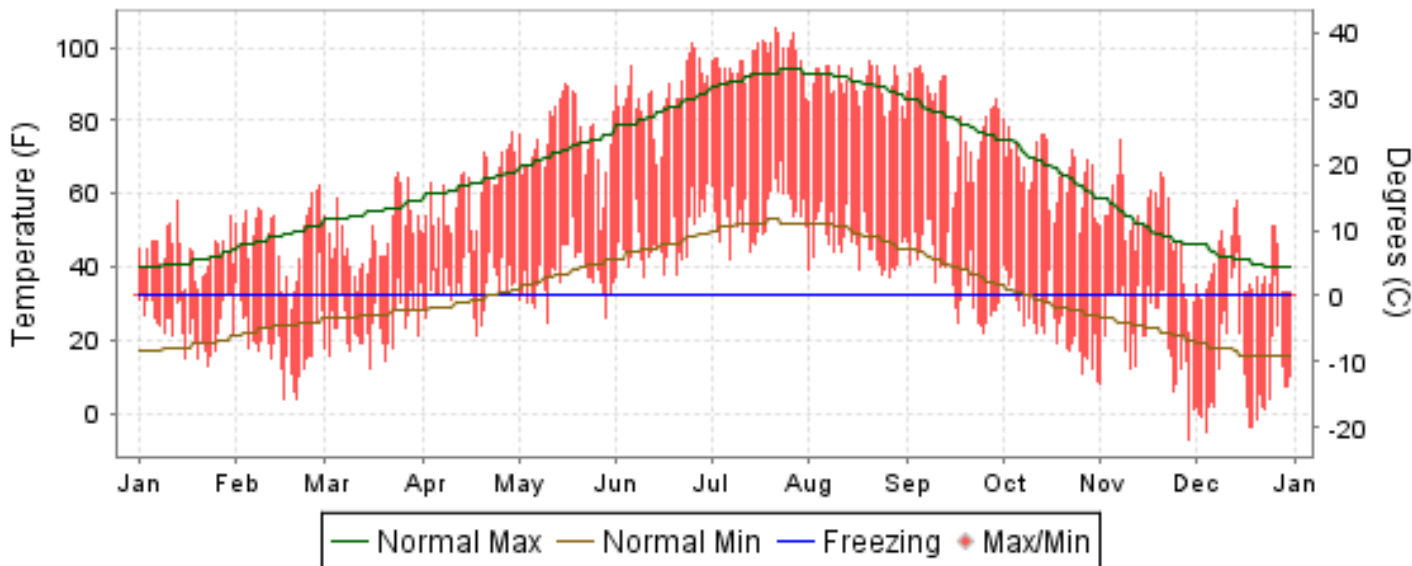


2006 LOCAL CLIMATOLOGICAL DATA ANNUAL SUMMARY WITH COMPARATIVE DATA

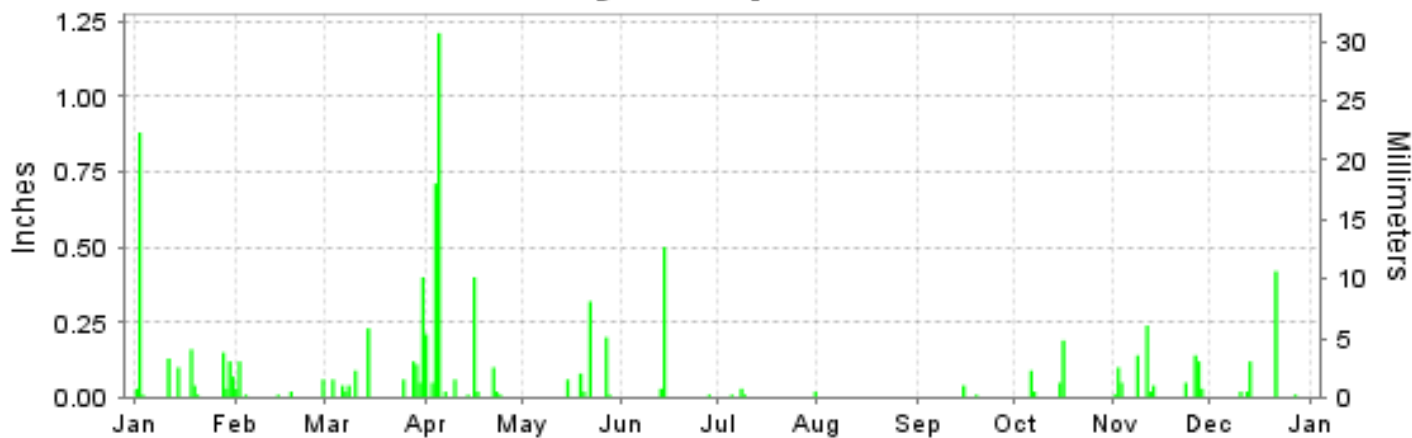
ISSN 0198-3342

WINNEMUCCA, NEVADA (KWMC)

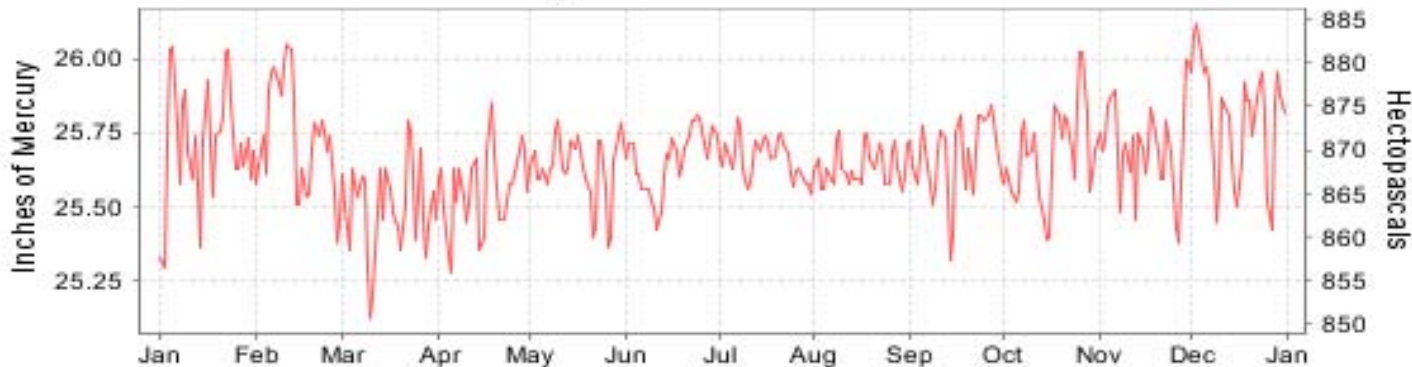
Daily Max/Min Temperature



Daily Precipitation



Daily Station Pressure



I CERTIFY THAT THIS IS AN OFFICIAL PUBLICATION OF THE NATIONAL OCEANIC AND ATMOSPHERIC ADMINISTRATION, AND IS COMPILED FROM RECORDS ON FILE AT THE NATIONAL CLIMATIC DATA CENTER.

NATIONAL
OCEANIC AND
ATMOSPHERIC ADMINISTRATION

NATIONAL
ENVIRONMENTAL SATELLITE, DATA
AND INFORMATION SERVICE

NATIONAL
CLIMATIC DATA CENTER
ASHEVILLE, NORTH CAROLINA

Thomas R. Karl
DIRECTOR
NATIONAL CLIMATIC DATA CENTER

METEOROLOGICAL DATA FOR 2006

WINNEMUCCA (KWMC)

LATITUDE: 40° 54'N LONGITUDE: -117° 48'W ELEVATION (FT): GRND: 4296 BARO: 4300 TIME ZONE: PACIFIC (UTC -8) WBAN: 24128

ELEMENT		JAN	FEB	MAR	APR	MAY	JUN	JUL	AUG	SEP	OCT	NOV	DEC	YEAR	
TEMPERATURE °F	MEAN DAILY MAXIMUM	43.6	47.9	48.4	60.0	74.8	87.3	97.0	89.9	81.0	65.9	51.9	39.8	65.6	
	HIGHEST DAILY MAXIMUM	58	62	66	77	90	101	105	96	95	80	75	58	105	
	DATE OF OCCURRENCE	13	27	24	29	16	25	21	20	05	01	07	14	JUL 21	
	MEAN DAILY MINIMUM	24.3	19.0	23.6	34.3	37.3	47.1	54.8	46.0	37.0	24.6	21.6	11.9	31.8	
	LOWEST DAILY MINIMUM	13	4	12	21	25	37	42	37	22	9	-7	-5	-7	
	DATE OF OCCURRENCE	23	20+	15	18	10	10+	07	26	25	31	29	04	NOV 29	
	AVERAGE DRY BULB	34.0	33.5	36.0	47.2	56.1	67.2	75.9	68.0	59.0	45.3	36.8	25.9	48.7	
	MEAN WET BULB	30.7	28.1	31.2	40.5	45.4	51.6	55.2	48.9	43.2	35.8	32.7	22.9	38.9	
	MEAN DEW POINT	25.9	20.1	22.7	32.8	32.3	34.7	35.0	25.9	22.6	22.4	24.8	15.9	26.3	
	NUMBER OF DAYS WITH:														
	MAXIMUM >= 90°	0	0	0	0	0	11	30	18	8	0	0	0	0	67
	MAXIMUM <= 32°	0	2	0	0	0	0	0	0	0	0	3	3	3	8
MINIMUM <= 32°	30	26	28	10	7	0	0	0	12	26	22	27	27	188	
MINIMUM <= 0°	0	0	0	0	0	0	0	0	0	0	1	6	6	7	
H/C	HEATING DEGREE DAYS	957	879	890	530	285	38	0	19	217	604	839	1206	6464	
	COOLING DEGREE DAYS	0	0	0	0	14	111	346	120	42	0	0	0	633	
RH	MEAN (PERCENT)	74	63	61	63	45	34	25	23	29	46	63	66	49	
	HOUR 04 LST	82	79	74	81	76	63	49	47	46	68	78	76	68	
	HOUR 10 LST	66	48	47	49	27	21	15	14	19	30	49	56	37	
	HOUR 16 LST	69	42	43	43	24	16	12	9	14	26	54	59	34	
	HOUR 22 LST	80	75	72	75	55	41	28	26	34	56	72	75	57	
S	PERCENT POSSIBLE SUNSHINE														
W/O	NUMBER OF DAYS WITH:														
	HEAVY FOG(VISBY <= 1/4 MI)	1	0	1	2	0	0	0	0	0	0	2	1	7	
	THUNDERSTORMS	0	0	0	6	6	0	6	1	2	1	0	0	22	
CLOUDNESS	SUNRISE-SUNSET: (OKTAS)														
	CEILOMETER (<= 12,000 FT.)														
	SATELLITE (> 12,000 FT.)														
	MIDNIGHT-MIDNIGHT: (OKTAS)														
	CEILOMETER (<= 12,000 FT.)														
SATELLITE (> 12,000 FT.)															
NUMBER OF DAYS WITH:															
CLEAR															
PARTLY CLOUDY															
CLOUDY															
PR	MEAN STATION PRESS. (IN.)	25.71	25.73	25.50	25.57	25.63	25.66	25.66	25.64	25.67	25.68	25.69	25.81	25.66	
	MEAN SEA-LEVEL PRESS. (IN.)	30.15	30.17	29.88	29.91	29.95	29.93	29.90	29.90	29.98	30.04	30.11	30.30	30.02	
WINDS	RESULTANT SPEED (MPH)	3.5	0.8	3.0	1.0	0.9	1.7	2.0	1.0	0.4	1.2	2.7	1.2	0.9	
	RES. DIR. (TENS OF DEGS.)	18	16	20	26	31	29	23	31	35	32	19	12	22	
	MEAN SPEED (MPH)	7.1	6.5	7.8	7.3	7.2	7.1	6.8	7.2	5.7	5.4	6.4	6.8	6.8	
	PREVAIL.DIR.(TENS OF DEGS.)	17	16	17	26	02	04	27	04	14	14	18	04	17	
	MAXIMUM 2-MINUTE WIND														
	SPEED (MPH)	32	37	39	32	40	43	32	29	28	25	40	30	43	
	DIR. (TENS OF DEGS.)	14	23	27	23	15	26	23	24	35	26	30	26	26	
	DATE OF OCCURRENCE	01	28	25	15	15	13	24	23	22	15	14	27	JUN 13	
	MAXIMUM 5-SECOND WIND:														
	SPEED (MPH)	41	47	49	49	66	56	39	37	40	32	55	40	66	
DIR. (TENS OF DEGS.)	14	23	26	21	16	26	22	25	19	31	30	24	16		
DATE OF OCCURRENCE	01	28	25	03	15	13	11	23	03	24	14	27	MAY 15		
PRECIPITATION	WATER EQUIVALENT:														
	TOTAL (IN.)	1.73	0.25	1.22	2.82	0.69	0.54	0.07	T	0.05	0.35	0.94	0.59	9.25	
	GREATEST 24-HOUR (IN.)	0.91	0.15	0.40	1.70	0.32	0.53	0.04	T	0.04	0.24	0.26	0.42	1.70	
	DATE OF OCCURRENCE	01-02	01-02	31	04-05	22	13-14	08-09	25+	15	15-16	26-27	21	APR 04-05	
	NUMBER OF DAYS WITH:														
	PRECIPITATION 0.01	12	6	11	12	6	3	4	0	2	4	11	5	76	
PRECIPITATION 0.10	6	1	4	5	2	1	0	0	0	1	5	2	27		
PRECIPITATION 1.00	0	0	0	1	0	0	0	0	0	0	0	0	1		
SNOWFALL	SNOW,ICE PELLETS,HAIL														
	TOTAL (IN.)												2.7		
	GREATEST 24-HOUR (IN.)												2.7		
	DATE OF OCCURRENCE												21		
	MAXIMUM SNOW DEPTH (IN.)												30		
DATE OF OCCURRENCE												25+			
NUMBER OF DAYS WITH:															
SNOWFALL >= 1.0												1			

NORMALS, MEANS, AND EXTREMES WINNEMUCCA (KWMC)

LATITUDE: 40° 54'N LONGITUDE: -117° 48'W ELEVATION (FT): GRND: 4296 BARO: 4300 TIME ZONE: PACIFIC (UTC -8) WBAN: 24128

ELEMENT		POR	JAN	FEB	MAR	APR	MAY	JUN	JUL	AUG	SEP	OCT	NOV	DEC	YEAR	
TEMPERATURE °F	NORMAL DAILY MAXIMUM	30	41.6	48.5	55.1	62.6	72.0	82.7	92.2	90.6	80.4	67.3	51.4	42.2	65.6	
	MEAN DAILY MAXIMUM	57	42.0	48.1	54.5	62.2	72.1	82.2	92.8	90.4	80.6	67.8	52.5	42.9	65.7	
	HIGHEST DAILY MAXIMUM	57	68	74	81	90	98	106	109	108	103	91	77	67	109	
	YEAR OF OCCURRENCE		1971	1986	1972	1981	2003	1988	2002	1983	1950	1996	1980	1980	1980	JUL 2002
	MEAN OF EXTREME MAXS.	57	56.9	62.8	70.6	79.1	89.4	97.2	101.8	100.5	93.9	84.1	69.0	57.9	80.3	
	NORMAL DAILY MINIMUM	30	18.5	23.6	27.0	30.7	38.4	45.8	51.8	49.2	40.2	30.2	23.3	17.0	33.0	
	MEAN DAILY MINIMUM	57	17.8	22.6	25.2	29.8	37.6	45.1	51.5	48.1	39.0	29.1	22.5	17.5	32.2	
	LOWEST DAILY MINIMUM	57	-24	-28	-3	6	10	23	29	28	12	-2	-8	-37	-37	
	YEAR OF OCCURRENCE		1963	1985	1971	1972	2002	2001	1983	1992	1958	2002	1985	1990	1990	DEC 1990
	MEAN OF EXTREME MINS.	57	-2.0	4.6	10.3	16.0	23.3	31.2	38.7	35.7	25.0	14.8	5.6	-1.6	16.8	
	NORMAL DRY BULB	30	30.1	36.1	41.1	46.7	55.2	64.3	72.0	69.9	60.3	48.8	37.4	29.6	49.3	
	MEAN DRY BULB	57	29.9	35.4	39.8	46.0	54.9	63.8	72.1	69.3	59.8	48.5	37.5	30.2	48.9	
	MEAN WET BULB	23	26.8	30.1	34.8	38.7	44.6	49.5	53.7	51.3	45.5	38.1	31.5	25.9	39.2	
	MEAN DEW POINT	23	22.2	24.0	25.9	27.6	32.6	35.2	37.2	34.4	30.5	25.5	24.0	21.0	28.3	
	NORMAL NO. DAYS WITH: MAXIMUM >= 90	30	0.0	0.0	0.0	*	1.4	9.8	22.3	20.1	6.2	0.2	0.0	0.0	60.0	
	MAXIMUM <= 32	30	5.6	1.7	0.1	0.0	0.0	0.0	0.0	0.0	0.0	0.0	0.6	4.4	12.4	
MINIMUM <= 32	30	27.9	24.1	23.9	18.2	7.4	1.1	0.1	0.1	5.4	19.6	25.3	28.3	181.4		
MINIMUM <= 0	30	2.7	0.8	0.1	0.0	0.0	0.0	0.0	0.0	0.0	0.0	0.4	2.7	6.7		
H/C	NORMAL HEATING DEG. DAYS	30	1088	820	742	554	315	105	12	23	173	509	829	1101	6271	
	NORMAL COOLING DEG. DAYS	30	0	0	0	0	11	81	232	174	28	0	0	0	526	
RH	NORMAL (PERCENT)	30	72	65	58	48	45	38	29	29	37	48	63	71	50	
	HOURLY 04 LST	30	80	76	73	68	65	58	47	47	55	65	75	79	66	
	HOURLY 10 LST	30	69	60	50	40	35	29	23	23	30	40	57	66	44	
	HOURLY 16 LST	30	58	47	38	30	28	22	16	17	21	28	45	56	34	
	HOURLY 22 LST	30	77	70	64	54	50	42	32	33	43	54	69	75	55	
S	PERCENT POSSIBLE SUNSHINE	42	51	56	60	66	72	77	86	85	82	74	54	52	68	
W/O	MEAN NO. DAYS WITH: HEAVY FOG (VISBY <= 1/4 MI)	43	2.1	0.7	0.5	0.3	0.0	0.0	0.0	0.0	0.0	0.2	0.7	1.3	5.8	
	THUNDERSTORMS	50	0.0	0.1	0.4	0.9	2.6	2.9	3.2	3.4	1.7	0.5	0.1	0.1	15.9	
CLOUDNESS	MEAN: SUNRISE-SUNSET (OKTAS)			3.2	6.4		4.8	2.4								
	MIDNIGHT-MIDNIGHT (OKTAS)				7.2		4.8	2.4			0.8					
	MEAN NO. DAYS WITH: CLEAR			10.5	8.0	2.0	12.0	14.0	4.0	14.0	14.0	11.0		4.0		
	PARTLY CLOUDY	2	1.5	3.5	2.0		5.0	1.0			3.0	3.0		2.0		
	CLOUDY	1	8.0	8.0	18.5	7.0	5.5	4.0		1.0			4.0			
PR	MEAN STATION PRESSURE (IN)	23	25.73	25.67	25.63	25.61	25.60	25.61	25.65	25.66	25.66	25.69	25.71	25.74	25.66	
	MEAN SEA-LEVEL PRES. (IN)	23	30.19	30.10	30.01	29.97	29.91	29.89	29.90	29.92	29.96	30.06	30.14	30.20	30.02	
WINDS	MEAN SPEED (MPH)	23	7.4	8.1	8.5	8.7	8.7	8.7	8.2	7.9	7.5	7.1	7.4	7.3	8.0	
	PREVAIL. DIR (TENS OF DEGS)	12	19	19	19	28	28	28	28	28	05	17	19	19	19	
	MAXIMUM 2-MINUTE: SPEED (MPH)	12	44	48	40	41	40	45	46	51	40	48	48	48	51	
	DIR. (TENS OF DEGS)		23	25	18	27	15	24	15	24	24	29	22	20	24	
	YEAR OF OCCURRENCE		2004	1999	1995	1997	2006	1997	2001	1996	1995	1996	1998	1995	AUG 1996	
	MAXIMUM 5-SECOND SPEED (MPH)	12	54	55	49	59	66	56	58	58	53	54	60	63	66	
	DIR. (TENS OF DEGS)		22	22	26	24	16	26	30	24	23	28	21	20	16	
YEAR OF OCCURRENCE		2004	2000	2006	2003	2006	2006	2006	2004	1996	1995	1996	1998	1995	MAY 2006	
PRECIPITATION	NORMAL (IN)	30	0.83	0.62	0.86	0.85	1.06	0.69	0.27	0.35	0.53	0.66	0.80	0.81	8.33	
	MAXIMUM MONTHLY (IN)	57	2.70	2.17	1.66	2.92	3.57	2.86	1.74	1.74	2.80	2.19	2.66	3.66	3.66	
	YEAR OF OCCURRENCE		1956	1962	1952	1978	1998	1958	1984	1979	1998	1951	1950	1983	DEC 1983	
	MINIMUM MONTHLY (IN)	57	0.04	0.08	0.03	0.06	T	0.00	0.00	0.00	0.00	T	T	0.03	0.00	
	YEAR OF OCCURRENCE		1966	1967	2004	1959	1985	1994	1963	1969	1974	1995	1959	1976	JUN 1994	
	MAXIMUM IN 24 HOURS (IN)	57	0.91	0.74	.88	1.70	1.70	1.79	0.86	0.79	1.30	1.64	1.58	0.95	1.79	
	YEAR OF OCCURRENCE		2006	2002	2005	2006	1987	1958	1984	1990	1998	1951	1950	1996	JUN 1958	
	NORMAL NO. DAYS WITH: PRECIPITATION >= 0.01	30	8.3	7.5	8.3	7.4	6.9	4.3	2.3	2.7	3.6	4.7	7.6	7.6	71.2	
PRECIPITATION >= 1.00	30	0.0	0.0	0.0	0.0	*	0.1	0.0	0.0	*	0.0	0.0	0.0	0.1		
SNOWFALL	NORMAL (IN)	30	4.7	3.9	3.9	1.6	0.4	0.*	0.0	0.0	0.*	0.4	2.4	4.2	21.5	
	MAXIMUM MONTHLY (IN)	51	19.2	13.8	23.4	12.0	5.4	0.2	0.0	T	1.0	7.4	19.6	17.5	23.4	
	YEAR OF OCCURRENCE		1993	1969	1952	1964	1965	1995		1990	1986	1984	1985	1971	MAR 1952	
	MAXIMUM IN 24 HOURS (IN)	50	8.8	9.9	9.0	7.2	4.3	0.2	0.0	T	1.0	4.9	5.7	8.4	9.9	
	YEAR OF OCCURRENCE		1993	1959	1982	1971	1971	1995		1990	1986	1984	1985	1955	FEB 1959	
	MAXIMUM SNOW DEPTH (IN)	48	9	9	7	4	3	0	0	T	0	3	7	30	30	
	YEAR OF OCCURRENCE		2005	1985	1982	1971	1965			1990	1984	1984	1955	2006	DEC 2006	
NORMAL NO. DAYS WITH: SNOWFALL >= 1.0	30	1.7	1.3	1.3	0.6	0.3	0.0	0.0	0.0	0.0	0.2	1.0	1.6	8.0		

PRECIPITATION (inches) 2006 WINNEMUCCA (KWMC)

YEAR	JAN	FEB	MAR	APR	MAY	JUN	JUL	AUG	SEP	OCT	NOV	DEC	ANNUAL
1977	0.34	0.14	0.37	0.25	1.56	2.36	0.26	0.64	0.22	T	0.75	1.19	8.08
1978	0.88	0.58	1.08	2.92	0.26	0.08	0.17	T	1.12	T	0.62	0.39	8.10
1979	0.86	1.22	0.96	1.04	0.25	0.39	0.74	1.74	T	0.61	0.61	0.31	8.73
1980	1.93	0.44	0.53	0.26	2.05	0.57	0.13	0.23	0.18	0.27	0.52	0.25	7.36
1981	0.44	0.51	0.97	0.19	1.94	T	0.01	0.03	0.23	1.08	1.40	1.64	8.44
1982	0.30	0.14	1.39	0.29	0.18	1.50	0.88	0.15	1.08	1.19	1.41	0.52	9.03
1983	1.18	0.97	1.46	0.82	0.78	0.85	0.73	1.53	0.59	0.65	1.25	3.66	14.47
1984	0.11	0.91	1.56	1.24	1.41	1.38	1.74	0.19	0.78	1.62	1.57	0.36	12.87
1985	0.83	0.68	0.73	0.20	T	0.04	0.45	0.02	0.52	0.19	2.51	0.84	7.01
1986	0.32	0.86	0.39	0.75	1.07	0.12	0.02	0.27	0.81	0.73	0.10	0.07	5.51
1987	0.53	0.51	1.32	0.54	3.38	0.46	0.19	T	T	0.57	0.86	0.68	9.04
1988	1.19	0.22	0.10	1.55	0.46	0.52	0.07	0.17	0.28	0.04	1.62	0.51	6.73
1989	0.19	0.71	0.89	0.21	0.40	0.33	T	0.44	0.93	0.59	0.77	0.10	5.56
1990	0.47	0.45	0.59	1.33	1.22	0.21	0.09	0.97	0.21	0.06	0.17	0.60	6.37
1991	0.35	0.31	1.15	0.47	1.71	0.54	0.10	0.29	0.81	0.63	0.81	0.63	7.80
1992	0.09	0.21	1.02	0.08	0.02	0.43	0.07	0.05	0.07	0.49	0.60	1.01	4.14
1993	2.02	0.50	1.30	0.45	0.68	1.03	0.18	0.04	0.03	0.54	0.16	0.34	7.27
1994	0.43	0.79	0.38	1.44	1.29	0.00	0.38	0.02	0.21	0.44	1.68	0.52	7.58
1995	1.32	0.26	1.61	1.10	2.23	1.21	0.28	0.00	0.06	T	0.11	1.63	9.81
1996	1.65	1.10	0.91	0.57	1.25	0.44	0.14	0.07	0.57	0.45	0.57	2.98	10.70
1997	1.60	0.08	0.08	1.60	0.48	2.06	0.43	0.01	0.28	0.23	0.78	0.25	7.88
1998	1.60	1.60	1.23	1.44	3.57	0.90	0.06	T	2.80	1.10	0.89	0.42	15.61
1999	1.28	0.77	0.10	0.84	0.36	1.16	0.01	0.16	0.12	0.24	0.21	0.08	5.33
2000	1.31	1.59	0.88	1.08	1.35	0.01	0.05	0.69	0.85	1.71	0.28	0.31	10.11
2001	0.58	0.69	0.26	0.77	0.09	0.03	0.20	0.01	0.22	0.11	0.94	0.94	4.84
2002	0.84	0.89	0.97	0.64	0.43	0.26	T	T	0.24	0.13	1.28	0.39	6.07
2003	1.28	0.39	0.63	1.03	1.72	0.01	0.19	0.09	0.38	0.09	0.83	1.78	8.42
2004	0.52	1.05	0.03	0.28	0.74	0.23	0.10	0.12	0.20	1.58	1.28	0.56	6.69
2005	1.04	0.50	1.54	0.37	2.09	0.50	T	T	0.31	0.87	0.62	2.26	10.10
2006	1.73	0.25	1.22	2.82	0.69	0.54	0.07	T	0.05	0.35	0.94	0.59	9.25
POR= 57 YRS	0.90	0.66	0.77	0.82	0.94	0.78	0.22	0.31	0.43	0.60	0.85	0.88	8.16

WBAN : 24128

AVERAGE TEMPERATURE (°F) 2006 WINNEMUCCA (KWMC)

YEAR	JAN	FEB	MAR	APR	MAY	JUN	JUL	AUG	SEP	OCT	NOV	DEC	ANNUAL
1977	26.9	38.5	37.2	50.4	50.4	70.6	73.0	72.4	58.9	50.4	40.5	38.9	50.7
1978	36.0	37.6	46.6	47.4	54.1	62.6	71.7	69.4	57.3	50.5	34.6	26.0	49.5
1979	25.4	35.9	41.8	47.1	59.1	66.5	72.9	69.5	63.2	53.1	35.5	32.9	50.2
1980	32.7	41.8	38.1	49.1	55.7	60.9	73.2	68.0	60.5	49.6	39.2	33.9	50.2
1981	34.6	36.9	38.6	49.2	53.2	65.9	71.4	71.5	63.0	45.5	41.5	37.4	50.7
1982	28.3	35.8	38.5	44.4	54.3	63.0	70.1	70.3	57.0	44.9	33.3	30.7	47.6
1983	34.3	39.0	41.7	42.7	53.3	62.0	67.2	70.6	59.8	50.2	38.6	31.5	49.2
1984	24.2	34.3	40.3	42.6	55.1	59.0	71.7	71.5	60.0	43.9	38.3	26.4	47.3
1985	19.1	27.2	36.9	48.9	54.7	68.0	74.7	66.9	55.1	44.9	28.0	26.7	45.9
1986	38.7	41.1	45.8	46.7	53.7	68.4	69.8	72.9	54.4	49.0	38.3	29.0	50.7
1987	26.7	34.5	40.2	51.3	58.4	66.7	67.9	70.3	62.4	53.1	39.1	28.8	50.0
1988	27.5	37.1	40.0	48.9	53.8	66.7	75.7	70.7	58.9	55.0	38.4	27.8	50.0
1989	22.0	27.3	43.8	50.7	54.4	65.7	73.1	67.1	60.2	48.0	37.4	30.2	48.3
1990	31.7	29.6	42.6	52.7	53.0	64.2	73.9	70.2	65.4	49.7	35.3	16.6	48.7
1991	26.2	40.3	39.1	43.2	50.1	61.2	74.8	71.1	63.3	50.8	38.9	29.2	49.0
1992	31.6	40.0	44.4	52.2	62.6	65.7	70.5	71.9	61.3	50.6	34.8	26.1	51.0
1993	20.8	29.4	46.5	46.8	59.3	60.0	65.3	67.2	61.0	50.2	30.7	30.6	47.3
1994	31.6	33.6	44.3	49.1	58.4	66.5	76.3	71.2	62.0	46.5	30.9	29.5	50.0
1995	37.1	41.9	40.4	43.9	51.4	59.3	69.9	68.3	61.2	48.0	42.8	33.7	49.8
1996	33.5	36.0	41.2	46.7	54.1	64.3	75.0	70.4	57.4	47.5	39.1	33.9	49.9
1997	31.5	34.4	42.9	44.7	59.4	62.2	69.4	69.5	61.8	47.1	39.4	28.2	49.2
1998	36.5	35.6	39.2	43.9	49.0	59.1	73.6	70.8	62.7	45.3	38.9	24.8	48.3
1999	33.0	36.5	39.3	42.8	52.5	62.5	70.0	67.9	60.6	49.0	41.6	28.8	48.7
2000	33.2	39.1	40.4	50.4	55.9	66.7	70.3	70.4	58.9	47.2	32.0	30.5	49.6
2001	27.1	32.2	43.2	43.7	61.5	65.6	71.8	72.5	62.6	50.8	39.2	31.8	50.2
2002	30.4	36.0	37.4	47.6	53.6	66.5	75.9	67.8	60.3	44.5	37.0	34.7	49.3
2003	40.2	32.6	42.1	44.4	55.4	67.4	75.6	71.5	61.3	52.4	34.1	33.8	50.9
2004	28.6	33.3	46.5	49.5	55.2	65.9	74.2	70.0	58.8	47.3	36.0	31.1	49.7
2005	23.7	32.5	41.8	45.7	55.0	59.7	74.9	70.5	56.1	48.0	38.5	32.0	48.2
2006	34.0	33.5	36.0	47.2	56.1	67.2	75.9	68.0	59.0	45.3	36.8	25.9	48.7
POR= 57 YRS	29.9	35.4	39.8	46.0	54.9	63.8	72.1	69.3	59.8	48.5	37.5	30.2	48.9

HEATING DEGREE DAYS (base 65°F) 2006 WINNEMUCCA (KWMC)

YEAR	JUL	AUG	SEP	OCT	NOV	DEC	JAN	FEB	MAR	APR	MAY	JUN	TOTAL
1977-78	2	28	203	444	729	798	894	762	566	523	335	96	5380
1978-79	21	53	241	442	907	1202	1221	809	710	532	205	63	6406
1979-80	1	18	75	363	875	988	995	667	827	471	290	162	5732
1980-81	0	23	146	472	766	958	935	779	809	474	365	89	5816
1981-82	2	0	115	600	697	848	1131	811	812	610	327	124	6077
1982-83	29	8	258	618	943	1054	947	721	714	658	377	103	6430
1983-84	35	6	156	451	785	1032	1257	881	757	662	307	210	6539
1984-85	0	11	185	645	794	1188	1415	1049	863	479	314	49	6992
1985-86	3	39	293	617	1101	1179	809	665	590	542	381	40	6259
1986-87	12	4	345	490	792	1108	1181	849	763	407	221	64	6236
1987-88	47	14	111	364	772	1116	1155	804	769	474	343	94	6063
1988-89	0	4	223	305	792	1146	1328	1051	648	419	336	37	6289
1989-90	3	47	139	523	822	1071	1026	986	690	360	363	92	6122
1990-91	4	38	45	468	887	1498	1195	685	796	647	452	135	6850
1991-92	0	4	93	431	777	1104	1029	717	633	379	106	95	5368
1992-93	13	40	124	438	899	1198	1365	992	567	536	192	183	6547
1993-94	45	40	166	448	1024	1061	1027	875	636	472	209	59	6062
1994-95	0	2	101	565	1016	1094	854	640	756	625	413	195	6261
1995-96	18	22	137	518	656	960	968	837	728	538	331	84	5797
1996-97	2	12	235	536	769	959	1032	850	675	602	183	106	5961
1997-98	16	7	132	550	761	1136	875	816	793	623	490	176	6375
1998-99	0	5	134	606	775	1240	985	794	790	660	391	147	6527
1999-00	4	35	137	490	696	1115	978	744	755	430	285	38	5707
2000-01	14	4	198	543	982	1062	1168	913	667	633	136	78	6398
2001-02	4	0	104	432	767	1021	1064	806	850	517	367	74	6006
2002-03	0	27	161	627	832	936	763	902	700	611	324	38	5921
2003-04	0	2	137	384	923	959	1121	914	568	459	301	60	5828
2004-05	0	27	199	542	863	1041	1275	905	713	571	308	176	6620
2005-06	0	12	262	521	787	1014	957	879	890	530	285	38	6175
2006-	0	19	217	604	839	1206							

WBAN : 24128

COOLING DEGREE DAYS (base 65°F) 2006 WINNEMUCCA (KWMC)

YEAR	JAN	FEB	MAR	APR	MAY	JUN	JUL	AUG	SEP	OCT	NOV	DEC	TOTAL
1977	0	0	0	0	4	188	257	265	27	0	0	0	741
1978	0	0	0	0	5	31	234	197	18	0	0	0	485
1979	0	0	0	0	29	114	256	165	26	3	0	0	593
1980	0	0	0	0	8	48	262	126	19	2	0	0	465
1981	0	0	0	6	5	124	208	208	61	0	0	0	612
1982	0	0	0	0	2	71	195	177	22	0	0	0	467
1983	0	0	0	0	21	21	108	189	10	0	0	0	349
1984	0	0	0	0	8	37	217	218	40	0	0	0	520
1985	0	0	0	0	3	148	311	105	3	0	0	0	570
1986	0	0	0	0	37	147	166	254	32	0	0	0	636
1987	0	0	0	3	26	123	144	185	41	0	0	0	522
1988	0	0	0	0	5	152	337	187	48	0	0	0	729
1989	0	0	0	0	13	66	264	118	1	0	0	0	462
1990	0	0	0	0	0	74	290	205	62	0	0	0	631
1991	0	0	0	0	0	26	310	200	49	0	0	0	585
1992	0	0	0	1	39	121	194	258	20	2	0	0	635
1993	0	0	0	0	24	39	60	116	50	0	0	0	289
1994	0	0	0	0	13	111	359	203	19	0	0	0	705
1995	0	0	0	0	0	32	181	133	31	0	0	0	377
1996	0	0	0	0	2	68	320	189	12	1	0	0	592
1997	0	0	0	0	16	27	160	154	39	1	0	0	397
1998	0	0	0	0	0	7	274	195	72	0	0	0	548
1999	0	0	0	0	11	79	167	129	11	0	0	0	397
2000	0	0	0	0	11	94	187	181	21	0	0	0	494
2001	0	0	0	0	35	101	224	240	39	0	0	0	639
2002	0	0	0	0	22	126	345	118	28	0	0	0	639
2003	0	0	0	0	33	119	334	210	33	2	0	0	731
2004	0	0	0	0	4	93	293	188	18	0	0	0	596
2005	0	0	0	0	2	26	314	190	2	0	0	0	534
2006	0	0	0	0	14	111	346	120	42	0	0	0	633

SNOWFALL (inches) 2006 WINNEMUCCA (KWMC)

YEAR	JUL	AUG	SEP	OCT	NOV	DEC	JAN	FEB	MAR	APR	MAY	JUN	TOTAL
1977-78	0.0	0.0	T	0.0	3.0	3.6	4.4	3.8	0.0	5.8	1.9	0.0	22.5
1978-79	0.0	0.0	T	0.0	1.8	4.2	5.2	12.1	4.6	1.9	0.1	0.0	29.9
1979-80	0.0	0.0	0.0	0.0	1.6	0.8	2.7	T	0.5	0.4	T	0.0	6.0
1980-81	0.0	0.0	0.0	T	T	0.2	3.7	1.2	1.1	T	T	0.0	6.2
1981-82	0.0	0.0	0.0	T	0.5	3.8	4.6	0.8	15.9	0.9	T	0.0	26.5
1982-83	0.0	0.0	0.0	T	5.8	2.3	9.2	2.1	0.9	1.3	0.3	0.0	21.9
1983-84	0.0	0.0	0.0	0.0	2.2	14.6	1.4	2.4	5.5	2.1	T	0.0	28.2
1984-85	0.0	0.0	0.0	7.4	2.6	3.9	8.8	7.2	5.8	0.4	T	0.0	36.1
1985-86	0.0	0.0	T	T	19.6	0.8	0.3	2.0	1.8	0.4	1.3	0.0	26.2
1986-87	0.0	0.0	1.0	0.0	0.8	T	2.7	5.1	6.0	0.1	0.0	0.0	15.7
1987-88	0.0	0.0	0.0	0.0	0.8	3.4		T					
1988-89						7.1	2.8	8.4	0.5	1.9	0.0	T	
1989-90	0.0	0.0	0.0	0.1	1.6	T	3.3	11.7	0.3	T	T	0.0	17.0
1990-91	0.0	T	0.0	0.0	2.0	8.0	3.7	T	8.6	0.7	T	T	23.0
1991-92	0.0	0.0	0.0	2.3	1.7	1.5	0.9	0.3	0.3	0.0	0.0	0.0	7.0
1992-93	0.0	0.0	0.0	0.0	0.4	6.8	19.2	7.8	T	0.7	T	0.0	34.9
1993-94	0.0	0.0	0.0	0.0	1.0	4.1	4.1	5.9	T	2.1	T	0.0	17.2
1994-95	0.0	0.0	0.0	T	3.0	7.5	2.5	1.0	4.4	0.0	0.0	0.2	18.6
1995-96	0.0	0.0	0.0		0.0								
1996-97													
1997-98													
1998-99													
1999-00													
2000-01													
2001-02						4.4	1.6	0.1	3.5	0.7	T	0.0	
2002-03	0.0	0.0	0.0	0.0	T	1.3	0.0	0.3	0.2	2.4	0.7	0.0	4.9
2003-04	0.0	0.0	0.0	0.1	2.7	10.7	4.8	9.5	T	T	0.0	0.0	27.8
2004-05	0.0	0.0	0.0	2.6	3.3	5.9	10.2	1.1	2.5	T	0.0	0.0	25.6
2005-2006-	0.0	0.0	0.0	T	3.8	7.3							
						2.7							
POR= 56 YRS	0.0	T	T	0.4	1.9	4.4	4.6	3.3	3.6	1.9	0.5	T	20.6

WBAN : 24128

REFERENCE NOTES :

<p>PAGE 1: THE TEMPERATURE GRAPH SHOWS NORMAL MAXIMUM AND NORMAL MINIMUM DAILY TEMPERATURES (SOLID CURVES) AND THE ACTUAL DAILY HIGH AND LOW TEMPERATURES (VERTICAL BARS).</p> <p>PAGE 2 AND 3: H/C INDICATES HEATING AND COOLING DEGREE DAYS. RH INDICATES RELATIVE HUMIDITY W/O INDICATES WEATHER AND OBSTRUCTIONS S INDICATES SUNSHINE. PR INDICATES PRESSURE. CLOUDINESS ON PAGE 3 IS THE SUM OF THE CEILOMETER AND SATELLITE DATA NOT TO EXCEED EIGHT EIGHTHS(OKTAS).</p> <p>GENERAL: T INDICATES TRACE PRECIPITATION, AN AMOUNT GREATER THAN ZERO BUT LESS THAN THE LOWEST REPORTABLE VALUE. + INDICATES THE VALUE ALSO OCCURS ON EARLIER DATES. BLANK ENTRIES DENOTE MISSING OR UNREPORTED DATA. NORMALS ARE 30-YEAR AVERAGES (1971 - 2000). ASOS INDICATES AUTOMATED SURFACE OBSERVING SYSTEM. PM INDICATES THE LAST DAY OF THE PREVIOUS MONTH. POR (PERIOD OF RECORD) BEGINS WITH THE JANUARY DATA MONTH AND IS THE NUMBER OF YEARS USED TO COMPUTE THE MEAN. INDIVIDUAL MONTHS WITHIN THE POR MAY BE MISSING. WHEN THE POR FOR A NORMAL IS LESS THAN 30 YEARS, THE NORMAL IS PROVISIONAL AND IS BASED ON THE NUMBER OF YEARS INDICATED. 0.* OR * INDICATES THE VALUE OR MEAN-DAYS-WITH IS BETWEEN 0.00 AND 0.05. CLOUDINESS FOR ASOS STATIONS DIFFERS FROM THE NON-ASOS OBSERVATION TAKEN BY A HUMAN OBSERVER. ASOS STATION CLOUDINESS IS BASED ON TIME-AVERAGED CEILOMETER DATA FOR CLOUDS AT OR BELOW 12,000 FEET AND ON SATELLITE DATA FOR CLOUDS ABOVE 12,000 FEET. THE NUMBER OF DAYS WITH CLEAR, PARTLY CLOUDY, AND CLOUDY CONDITIONS FOR ASOS STATIONS IS THE SUM OF THE CEILOMETER AND SATELLITE DATA FOR THE SUNRISE TO SUNSET PERIOD.</p>	<p>GENERAL CONTINUED: CLEAR INDICATES 0 - 2 OKTAS, PARTLY CLOUDY INDICATES 3 - 6 OKTAS, AND CLOUDY INDICATES 7 OR 8 OKTAS. WHEN AT LEAST ONE OF THE ELEMENTS (CEILOMETER OR SATELLITE) IS MISSING, THE DAILY CLOUDINESS IS NOT COMPUTED. WIND DIRECTION IS RECORDED IN TENS OF DEGREES (2 DIGITS) CLOCKWISE FROM TRUE NORTH. "00" INDICATES CALM. "36" INDICATES TRUE NORTH. RESULTANT WIND IS THE VECTOR AVERAGE OF THE SPEED AND DIRECTION. AVERAGE TEMPERATURE IS THE SUM OF THE MEAN DAILY MAXIMUM AND MINIMUM TEMPERATURE DIVIDED BY 2. SNOWFALL DATA COMPRISE ALL FORMS OF FROZEN PRECIPITATION, INCLUDING HAIL. A HEATING (COOLING) DEGREE DAY IS THE DIFFERENCE BETWEEN THE AVERAGE DAILY TEMPERATURE AND 65 F. DRY BULB IS THE TEMPERATURE OF THE AMBIENT AIR. DEW POINT IS THE TEMPERATURE TO WHICH THE AIR MUST BE COOLED TO ACHIEVE 100 PERCENT RELATIVE HUMIDITY. WET BULB IS THE TEMPERATURE THE AIR WOULD HAVE IF THE MOISTURE CONTENT WAS INCREASED TO 100 PERCENT RELATIVE HUMIDITY.</p> <p>ON JULY 1, 1996, THE NATIONAL WEATHER SERVICE BEGAN USING THE "METAR" OBSERVATION CODE THAT WAS ALREADY EMPLOYED BY MOST OTHER NATIONS OF THE WORLD. THE MOST NOTICEABLE DIFFERENCE IN THIS ANNUAL PUBLICATION WILL BE THE CHANGE IN UNITS FROM TENTHS TO EIGHTS(OKTAS) FOR REPORTING THE AMOUNT OF SKY COVER.</p> <p>NOTE: The "Period of Record:(POR) for all "averages" is based on the "Summary of the Day First Order Station" and "Cooperative Summary of the Day" archives.</p>
--	---

2006 WINNEMUCCA NEVADA (KWMC)

Winnemucca lies at an elevation about 4300 feet above sea level and is effectively cut off by the Sierra Nevada Mountains from the moisture source of the Pacific Ocean. Winnemucca has a climate marked by warm days, cool nights, and light precipitation. Sixty-six percent of the annual rainfall occurs as rain and snow between December and May. The winter snow pack in the surrounding mountains is generally sufficient for essential summertime irrigation. Reservoirs along the streams hold surplus water for less favorable years. As a result of the characteristic dryness of the climate, the neighboring valleys and hills are covered with sagebrush, and trees are found only along streams and in other places where water is sufficient the year round. Though it is heavier in the mountains, snowfall at Winnemucca itself has had measurable amounts fall in every month except July, August and September. During

the winter months, snow on the ground permits grazing in many desert regions where there is no other source of stock water. Grazing in the summer months is restricted to mountain range tracts where there is sufficient water. Streams in many areas have been stocked with fish and provide good fishing each year.

Temperatures in this plateau area tend to rise sharply right after sunrise and remain comparatively high during the daylight hours, then drop rapidly about sundown. Daily temperature variations of 50 degrees are not uncommon.

Based on the 1951-1980 period, the average first occurrence of 32 degrees Fahrenheit in the fall is September 10 and the average last occurrence in the spring is June 8.

Station Location

WINNEMUCCA

LOCATION	Occupied From	Occupied To	Airline Distances and Directions from previous Location	Latitude		ELEVATION ABOVE										REMARKS
				NORTH	WEST	SEA LEVEL	GROUND								AUTOMATIC OBSERVING EQUIPMENT *	
						GROUND TEMPERATURE SITE	WIND INSTRUMENT	EXTREME THERMOMETERS	PSYCHROMETER	SUNSHINE SWITCH	TIPPING BUCKET RAIN GAUGE	WEIGHING RAIN GAUGE	8 INCH RAIN GAUGE	HYGROTHERMOMETER		
*NOTE:																
AIRPORT																
Municipal Airport	9/15/49	5/01/70	5 mi. SW	40° 54'	117° 48'	c4301	a20	5	5		3	4	3	b4	a . 34 feet to 4/22/66. b . Commissioned 1200 feet SE of thermometer site 8/8/68. c . 4299 feet to 8/8/68.	
Municipal Airport	5/01/70	5/08/85	30 ft. W	40° 54'	117° 48'	4301	d20	s4	s4	19	5	5	s4	d4	NA d . Same site as prior to 5/1/70. s . Standby equipment.	
5330 Jays Road Municipal Airport	5/08/85	10/01/94	Unknown	40° 54'	117° 48'	4298	33	e6	e6	g22	f5	f5	f5	5	NA e . Relocated 5/10/85. f . Relocated 5/13/85. g . Relocated 5/15/85.	
Municipal Airport	10/01/94	Present	NA	40° 54'	117° 48'	h4297								S	ASOS commissioned 10/1/94. h . Ground Elevation	

For Hard Copy Subscription:

Price and ordering information: NCDC Subscribing Service Center, 310 State Route 956, Building 300, Rocket Center, WV 26726.

INQUIRES/COMMENTS CALL: Toll Free (866) 742-3322

Visit our Web Site for other weather data: www.ncdc.noaa.gov

Non-Subscription Request:

NCDC Customer Services;
Phone: 828-271-4800
Fax: 828-271-4876
Email: ncdc.orders@noaa.gov

FIRST CLASS
POSTAGE & FEES PAID
United States Department of Commerce
NOAA Permit No. G - 19

OFFICIAL BUSINESS
PENALTY FOR PRIVATE USE \$300
CHANGE SERVICE REQUESTED

* NOTES: For earlier station history see previous edition.