

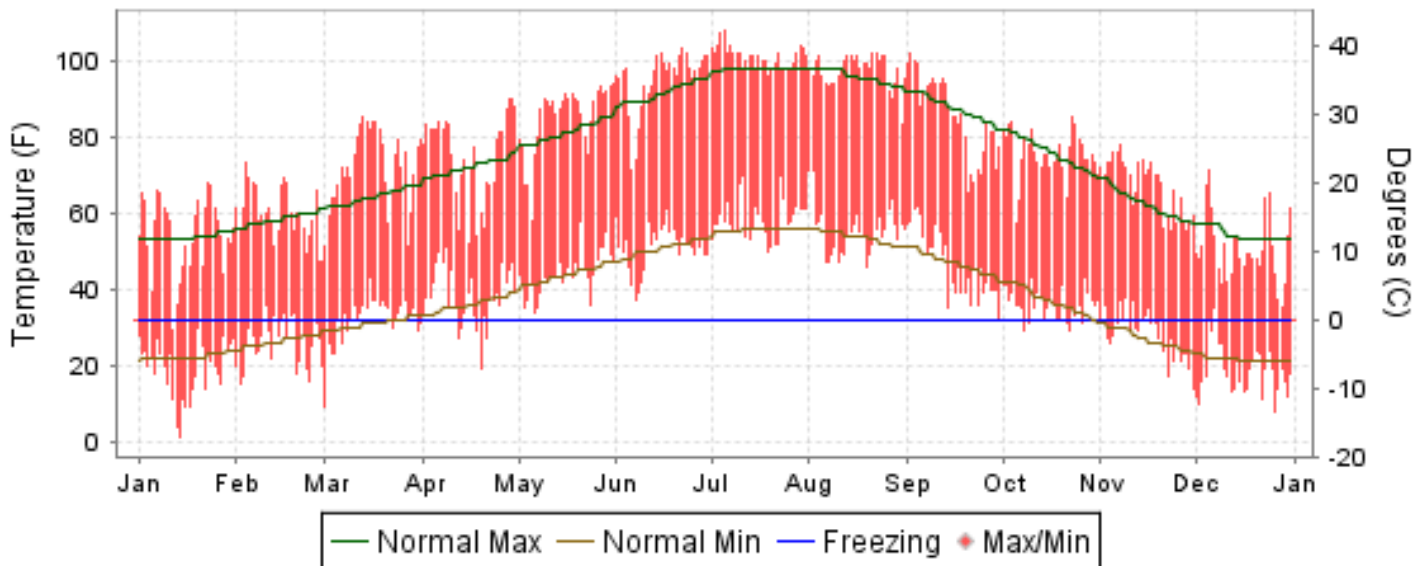


2007 LOCAL CLIMATOLOGICAL DATA ANNUAL SUMMARY WITH COMPARATIVE DATA

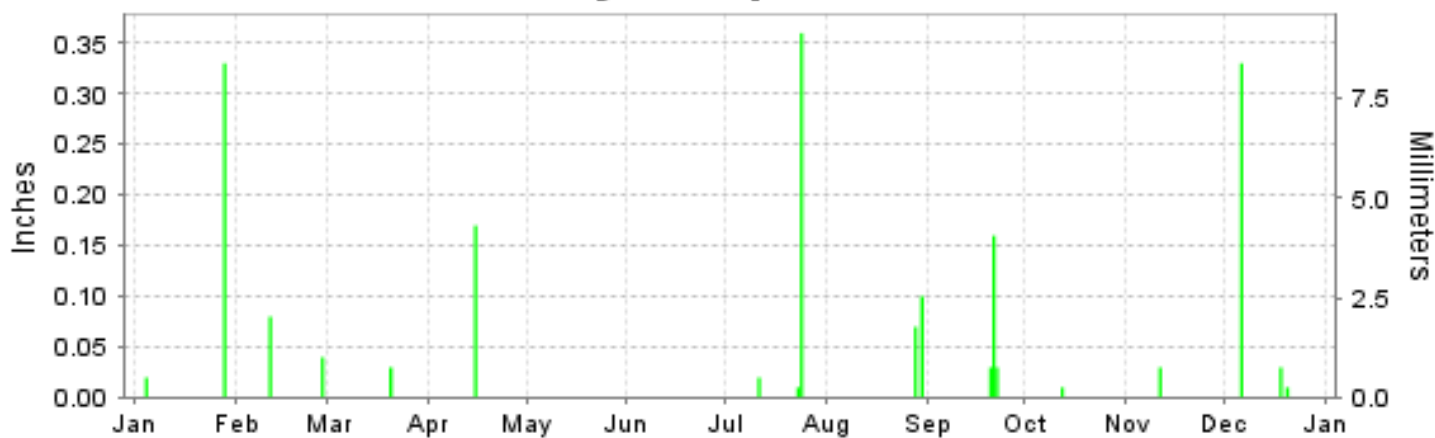
ISSN 0198-0866

BISHOP, CALIFORNIA (KBIH)

Daily Max/Min Temperature



Daily Precipitation



Daily Station Pressure



I CERTIFY THAT THIS IS AN OFFICIAL PUBLICATION OF THE NATIONAL OCEANIC AND ATMOSPHERIC ADMINISTRATION, AND IS COMPILED FROM RECORDS ON FILE AT THE NATIONAL CLIMATIC DATA CENTER.

NATIONAL
OCEANIC AND
ATMOSPHERIC ADMINISTRATION

NATIONAL
ENVIRONMENTAL SATELLITE, DATA
AND INFORMATION SERVICE

NATIONAL
CLIMATIC DATA CENTER
ASHEVILLE, NORTH CAROLINA

Thomas R. Karl
DIRECTOR
NATIONAL CLIMATIC DATA CENTER

METEOROLOGICAL DATA FOR 2007

BISHOP (KBIH)

LATITUDE: 37° 22'N LONGITUDE: -118° 21'W ELEVATION (FT): GRND: 4102 BARO: 4112 TIME ZONE: PACIFIC (UTC -8) WBAN: 23157

ELEMENT		JAN	FEB	MAR	APR	MAY	JUN	JUL	AUG	SEP	OCT	NOV	DEC	YEAR	
TEMPERATURE °F	MEAN DAILY MAXIMUM	54.3	59.7	72.1	74.9	84.8	94.9	100.9	97.3	85.3	75.3	67.2	50.6	76.4	
	HIGHEST DAILY MAXIMUM	68	73	85	90	94	103	108	102	102	85	78	71	108	
	DATE OF OCCURRENCE	23	04	13	29+	31	22	05	22+	02	23	07	05	JUL 05	
	MEAN DAILY MINIMUM	19.0	25.9	32.2	38.2	44.1	50.9	58.4	55.2	46.5	35.9	28.2	18.6	37.8	
	LOWEST DAILY MINIMUM	1	15	9	19	34	37	50	46	32	29	14	8	1	
	DATE OF OCCURRENCE	14	02	01	19	06	07	19	19	30	22+	30	26	JAN 14	
	AVERAGE DRY BULB	36.7	42.8	52.2	56.6	64.5	72.9	79.7	76.3	65.9	55.6	47.7	34.6	57.1	
	MEAN WET BULB	26.4	33.5	37.7	41.8	45.6	50.4	54.8	54.8	48.3	41.6	35.3	26.6		
	MEAN DEW POINT	6.9	17.5	14.9	19.7	18.1	21.9			33.2	28.4	22.7	17.9	13.3	
	NUMBER OF DAYS WITH:														
	MAXIMUM >= 90°	0	0	0	2	11	25	31	30	12	0	0	0	0	111
	MAXIMUM <= 32°	1	0	0	0	0	0	0	0	0	0	0	0	0	1
MINIMUM <= 32°	31	23	14	5	0	0	0	0	1	8	24	30	136		
MINIMUM <= 0°	0	0	0	0	0	0	0	0	0	0	0	0	0		
H/C	HEATING DEGREE DAYS	870	616	380	257	82	22	0	0	99	282	512	933	4053	
	COOLING DEGREE DAYS	0	0	0	12	72	266	463	360	136	0	0	0	1309	
RH	MEAN (PERCENT)	35	40	27	27	19	16	19	25	30	32	36	49	30	
	HOUR 04 LST	50	61	45	49	39	35	38	44	52	52	53	64	49	
	HOUR 10 LST	22	28	16	17	10	9	10	15	17	20	23	34	18	
	HOUR 16 LST	23	23	14	15	9	8	10	15	15	18	24	36	18	
	HOUR 22 LST	41	46	33	30	21	18	20	28	34	39	43	58	34	
S	PERCENT POSSIBLE SUNSHINE														
W/O	NUMBER OF DAYS WITH:														
	HEAVY FOG(VISBY <= 1/4 MI)	0	0	0	0	0	0	0	0	0	0	0	0	0	
	THUNDERSTORMS	0	0	0	0	0	0	0	0	0	0	0	0	0	
CLOUDNESS	SUNRISE-SUNSET: (OKTAS)														
	CEILOMETER (<= 12,000 FT.)														
	SATELLITE (> 12,000 FT.)														
	MIDNIGHT-MIDNIGHT: (OKTAS)														
	CEILOMETER (<= 12,000 FT.)														
SATELLITE (> 12,000 FT.)															
NUMBER OF DAYS WITH:															
CLEAR															
PARTLY CLOUDY															
CLOUDY															
PR	MEAN STATION PRESS. (IN.)	25.89	25.80	25.84	25.73	25.72	25.72	25.74	25.75	25.74	25.82	25.88	25.88	25.79	
	MEAN SEA-LEVEL PRESS. (IN.)	30.11	29.99	30.01	29.86	29.83	29.79	29.79	29.81	29.85	29.97	30.07	30.13	29.93	
WINDS	RESULTANT SPEED (MPH)	6.4	3.1	3.9	4.4	1.3	1.3	4.4	2.2	1.2	1.6	3.3	4.6	1.8	
	RES. DIR. (TENS OF DEGS.)	34	34	34	34	32	26	17	18	21	33	33	34	33	
	MEAN SPEED (MPH)	8.8	8.4	8.0	9.4	9.3	8.1	8.1	7.6	7.7	8.3	6.5	7.1	8.1	
	PREVAIL.DIR.(TENS OF DEGS.)	32	35	34	36	35	16	16	16	16	33	32	35	32	
	MAXIMUM 2-MINUTE WIND														
	SPEED (MPH)	40	38	33	44	40	38	38	31	37	35	35	39	44	
	DIR. (TENS OF DEGS.)	36	25	35	01	27	25	16	16	35	01	36	36	01	
	DATE OF OCCURRENCE	11	25	27	12	02	05	11	26	29	17	23	20	APR 12	
	MAXIMUM 5-SECOND WIND:														
	SPEED (MPH)	52	51	44	54	54	49	49	38	51	46	44	51	54	
DIR. (TENS OF DEGS.)	26	25	35	36	28	25	16	15	35	25	36	36	28		
DATE OF OCCURRENCE	10	25	27	12	02	05	11	26	29	20	23	20	MAY 02		
PRECIPITATION	WATER EQUIVALENT:														
	TOTAL (IN.)	0.35	0.12	0.03	0.17	0.00	0.00	0.39	0.17	0.22	0.01	0.03	0.37	1.86	
	GREATEST 24-HOUR (IN.)	0.33	0.08	0.03	0.17	0.00	0.00	0.36	0.10	0.18	0.01	0.03	0.33	0.36	
	DATE OF OCCURRENCE	28	11	20	15			24	30	21-22	12	11	06	JUL 24	
	NUMBER OF DAYS WITH:														
	PRECIPITATION 0.01	2	2	1	1	0	0	3	2	3	1	1	3	19	
PRECIPITATION 0.10	1	0	0	1	0	0	1	1	1	0	0	1	6		
PRECIPITATION 1.00	0	0	0	0	0	0	0	0	0	0	0	0	0		
SNOWFALL	SNOW,ICE PELLETS,HAIL														
	TOTAL (IN.)														
	GREATEST 24-HOUR (IN.)														
	DATE OF OCCURRENCE														
	MAXIMUM SNOW DEPTH (IN.)														
DATE OF OCCURRENCE															
NUMBER OF DAYS WITH:															
SNOWFALL >= 1.0															

NORMALS, MEANS, AND EXTREMES BISHOP (KBIH)

LATITUDE: 37° 22'N LONGITUDE: -118° 21'W ELEVATION (FT): GRND: 4102 BARO: 4112 TIME ZONE: PACIFIC (UTC -8) WBAN: 23157

ELEMENT		POR	JAN	FEB	MAR	APR	MAY	JUN	JUL	AUG	SEP	OCT	NOV	DEC	YEAR	
TEMPERATURE °F	NORMAL DAILY MAXIMUM	30	53.6	58.4	64.3	72.1	81.2	91.5	97.9	95.8	87.6	76.0	62.4	54.3	74.6	
	MEAN DAILY MAXIMUM	60	53.1	57.9	64.0	71.7	80.8	90.9	97.6	95.5	87.8	76.6	63.0	54.3	74.4	
	HIGHEST DAILY MAXIMUM	60	77	81	87	93	102	109	110	107	112	97	84	78	112	
	YEAR OF OCCURRENCE		1948	1986	1966	1989	2003	1954	2002	1993	1995	1980	1988	1958	1958	SEP 1995
	MEAN OF EXTREME MAXS.	60	67.1	70.6	76.8	85.1	93.6	101.8	104.9	103.3	98.0	88.3	77.0	68.2	86.2	
	NORMAL DAILY MINIMUM	30	22.4	26.4	31.0	36.0	43.7	50.7	55.7	53.7	46.9	37.1	27.1	21.6	37.7	
	MEAN DAILY MINIMUM	60	21.6	25.9	30.1	36.1	43.8	50.8	56.1	53.6	46.7	37.3	27.6	21.8	37.6	
	LOWEST DAILY MINIMUM	60	-7	-2	9	15	25	29	34	37	26	16	5	-8	-8	
	YEAR OF OCCURRENCE		1982	1969	2007	1953	1964	1988	1987	1959	1986	1970	1958	1990	1990	DEC 1990
	MEAN OF EXTREME MINS.	60	9.3	14.4	17.8	24.4	32.2	39.2	46.8	44.3	36.7	26.0	15.4	10.2	26.4	
	NORMAL DRY BULB	30	38.0	42.4	47.7	54.1	62.5	71.1	76.8	74.8	67.3	56.6	44.8	38.0	56.2	
	MEAN DRY BULB	59	37.4	41.9	47.1	53.9	62.4	70.9	76.9	74.6	67.3	56.9	45.3	38.1	56.1	
	MEAN WET BULB	24	31.4	33.6	37.5	41.0	46.5	51.4	57.1	54.3	49.2	42.3	35.0	29.6	42.4	
	MEAN DEW POINT	24	20.9	21.9	22.8	24.5	30.2	34.7	39.4	39.2	34.0	27.1	22.0	18.4	27.9	
	NORMAL NO. DAYS WITH: MAXIMUM >= 90	30	0.0	0.0	0.0	0.4	5.0	19.0	28.7	26.6	12.6	1.4	0.0	0.0	93.7	
	MAXIMUM <= 32	30	0.5	0.4	0.0	0.0	0.0	0.0	0.0	0.0	0.0	0.0	0.0	0.4	1.3	
MINIMUM <= 32	30	29.1	24.1	18.4	8.3	1.2	0.1	0.0	0.0	0.4	7.3	24.1	29.3	142.3		
MINIMUM <= 0	30	0.1	0.0	0.0	0.0	0.0	0.0	0.0	0.0	0.0	0.0	0.0	0.2	0.3		
H/C	NORMAL HEATING DEG. DAYS	30	843	643	545	344	138	21	1	1	46	276	609	847	4314	
	NORMAL COOLING DEG. DAYS	30	0	0	0	3	45	191	357	293	106	8	0	0	1003	
RH	NORMAL (PERCENT)	30														
	HOUR 04 LST	30														
	HOUR 10 LST	30													31	
	HOUR 16 LST	30													22	
	HOUR 22 LST	30														
S	PERCENT POSSIBLE SUNSHINE															
W/O	MEAN NO. DAYS WITH: HEAVY FOG(VISBY <= 1/4 MI)	25	0.2	0.2	0.0	0.0	0.0	0.0	0.0	0.0	0.0	0.0	0.0	0.3	0.7	
	THUNDERSTORMS	27	0.0	0.0	0.1	0.0	0.2	0.4	1.0	0.5	0.2	0.1	0.0	0.0	2.5	
CLOUDNESS	MEAN: SUNRISE-SUNSET (OKTAS)						3.2	1.6								
	MIDNIGHT-MIDNIGHT (OKTAS)						3.2	1.6			0.0					
	MEAN NO. DAYS WITH: CLEAR															
	PARTLY CLOUDY CLOUDY															
PR	MEAN STATION PRESSURE(IN)	24	25.89	25.83	25.79	25.75	25.73	25.74	25.80	25.80	25.80	25.83	25.87	25.89	25.81	
	MEAN SEA-LEVEL PRES. (IN)	24	30.13	30.05	29.96	29.90	29.84	29.82	29.86	29.88	29.90	29.98	30.08	30.14	29.96	
WINDS	MEAN SPEED (MPH)	24	7.3	8.1	10.0	9.9	9.3	8.4	8.1	8.0	7.7	7.8	7.4	7.0	8.3	
	PREVAIL.DIR(TENS OF DEGS)	13	33	36	36	36	36	36	17	17	17	33	33	36	36	
	MAXIMUM 2-MINUTE: SPEED (MPH)	12	41	46	43	44	43	44	38	36	37	38	44	39	46	
	DIR. (TENS OF DEGS)		35	22	15	01	35	35	16	07	35	35	33	36	22	
	YEAR OF OCCURRENCE		2000	2001	2001	2007	2001	1998	2007	2004	2007	2006	2004	2007	FEB 2001	
	MAXIMUM 5-SECOND SPEED (MPH)	12	53	67	51	54	54	54	49	46	51	51	53	61	67	
	DIR. (TENS OF DEGS)		35	23	32	36	28	35	16	08	35	35	34	29	23	
YEAR OF OCCURRENCE		2000	2001	2002	2007	2007	1998	2007	2004	2007	2006	1996	2006	FEB 2001		
PRECIPITATION	NORMAL (IN)	30	0.88	0.97	0.62	0.24	0.26	0.21	0.17	0.13	0.28	0.20	0.44	0.62	5.02	
	MAXIMUM MONTHLY (IN)	58	8.93	6.01	2.94	2.26	1.30	1.31	1.47	0.64	1.28	1.58	2.59	5.79	8.93	
	YEAR OF OCCURRENCE		1969	1969	1991	1956	1962	1998	1976	1983	1994	1957	1960	1966	JAN 1969	
	MINIMUM MONTHLY (IN)	59	0.00	T	0.00	0.00	0.00	0.00	0.00	0.00	0.00	0.00	0.00	0.00	0.00	
	YEAR OF OCCURRENCE		1976	1967	1972	1973	1983	1981	1982	1980	1974	1973	1976	1975	MAY 1983	
	MAXIMUM IN 24 HOURS (IN)	59	3.32	3.64	1.79	1.58	0.95	0.72	0.86	0.46	1.25	1.22	1.79	3.35	3.64	
	YEAR OF OCCURRENCE		1952	1969	1995	1982	1953	1982	1976	1979	1994	2004	1950	1966	FEB 1969	
	NORMAL NO. DAYS WITH: PRECIPITATION >= 0.01	30	3.9	3.9	3.8	1.9	2.4	1.7	1.9	1.7	2.2	1.4	2.2	2.4	29.4	
PRECIPITATION >= 1.00	30	0.1	0.1	0.1	*	0.0	0.0	0.0	0.0	*	0.0	*	0.1	0.4		
SNOWFALL	NORMAL (IN)	30	3.5	1.3	0.6	0.1	0.*	0.0	0.0	0.0	0.0	0.1	0.4	1.2	7.2	
	MAXIMUM MONTHLY (IN)	47	23.2	31.9	14.5	8.8	2.3	0.0	0.0	0.0	T	1.8	3.9	13.2	31.9	
	YEAR OF OCCURRENCE		1969	1969	1952	1956	1964				1955	1978	1964	1967	FEB 1969	
	MAXIMUM IN 24 HOURS (IN)	47	18.0	14.2	7.5	8.8	2.3	0.0	0.0	0.0	T	1.8	3.9	6.7	18.0	
	YEAR OF OCCURRENCE		1969	1976	1952	1956	1964				1955	1978	1964	1967	JAN 1969	
	MAXIMUM SNOW DEPTH (IN)	48	22	14	13	1	2	0	0	0	0	0	4	6	22	
	YEAR OF OCCURRENCE		1969	1976	1969	1980	1964						1964	1984	JAN 1969	
NORMAL NO. DAYS WITH: SNOWFALL >= 1.0	30	1.1	0.1	0.2	0.0	0.0	0.0	0.0	0.0	0.0	0.0	0.2	0.5	2.1		

PRECIPITATION (inches) 2007 BISHOP (KBIH)

YEAR	JAN	FEB	MAR	APR	MAY	JUN	JUL	AUG	SEP	OCT	NOV	DEC	ANNUAL
1978	2.68	3.33	1.64	0.22	0.00	0.02	0.02	0.01	0.51	0.18	0.51	0.50	9.62
1979	0.45	0.64	0.49	T	T	T	0.03	0.02	0.25	0.07	0.13	0.57	2.65
1980	1.56	2.72	0.28	0.43	0.10	T	0.35	0.00	0.14	T	0.08	1.25	6.91
1981	0.65	0.11	0.85	0.68	0.88	0.00	0.00	0.04	0.03	0.09	1.30	0.11	4.74
1982	1.43	0.02	0.50	1.62	0.08	1.29	0.00	0.51	0.74	0.68	0.87	2.67	10.41
1983	1.82	1.29	1.20	0.22	0.00	T	0.05	0.64	0.40	0.08	1.31	1.14	8.15
1984	T	0.36	0.09	0.02	T	0.04	1.04	0.58	T	0.16	1.97	0.85	5.11
1985	0.25	0.01	0.06	0.00	0.00	0.67	0.31	0.00	0.34	0.05	0.95	0.55	3.19
1986	0.86	3.04	1.00	0.65	T	0.00	0.31	0.06	0.12	0.00	0.03	0.08	6.15
1987	0.42	0.31	0.03	0.04	0.54	0.16	0.18	0.03	0.01	0.13	1.67	0.60	4.12
1988	0.87	0.30	0.07	0.63	0.12	0.23	T	T	0.50	0.00	0.12	0.68	3.52
1989	0.06	0.12	0.04	0.00	1.04	0.04	0.00	0.01	0.24	0.00	0.26	0.00	1.81
1990	0.95	0.50	0.00	0.56	0.21	0.15	0.26	0.45	0.28	0.00	0.00	0.00	3.36
1991	T	0.07	2.94	0.07	T	0.02	0.00	0.00	0.21	0.69	0.00	0.58	4.58
1992	0.38	1.31	0.67	0.00	0.06	0.30	0.12	0.06	0.05	0.53	0.00	1.50	4.98
1993	2.03	2.62	0.91	0.00	0.04	0.00	0.00	T	0.00	0.06	0.12	0.08	5.86
1994	0.04	1.33	0.57	0.03	0.54	0.00	0.00	0.00	1.28	0.24	0.05	0.25	4.33
1995	2.87	0.60	2.28	0.07	0.72	0.20	0.23	0.01	T	T	0.02	1.06	8.06
1996	0.38	1.85	0.79	0.43	0.02	0.00	.12	T	T	.77	.78	T	5.14
1997		T	0.00	0.00	0.01	0.47	0.23	T	0.24	T	0.25	0.48	
1998	0.55	5.16	0.85	0.28	0.57	1.31	0.01	0.03	0.28	0.17	0.01	0.06	9.28
1999	1.10	0.41	0.01	0.38	0.08	0.02	0.04	0.19	0.15	0.00	0.02	0.00	2.40
2000	0.30	0.98	0.29	0.45	T	T	T	0.30	0.02	0.25	0.00	0.00	2.59
2001	0.79	1.40	0.37	0.41	0.12	T	0.73	T	0.00	T	1.02	0.21	5.05
2002	0.03	T	0.01	0.04	0.00	T	0.05	T	0.01	T	1.68	0.86	2.68
2003	0.04	0.46	0.57	0.21	T	T	T	T	T	0.00	0.88	0.30	2.46
2004	0.03	1.34	0.10	0.10	T	0.05	0.02	0.01	T	1.26	1.13	1.80	5.84
2005	3.78	0.83	1.23	T	0.25	0.00	0.02	0.58	0.36	0.28	T	2.16	9.49
2006	3.01	0.79	0.18	0.39	0.08	0.06	0.26	0.00	0.00	0.52	0.00	0.05	5.34
2007	0.35	0.12	0.03	0.17	0.00	0.00	0.39	0.17	0.22	0.01	0.03	0.37	1.86
POR= 60 YRS	1.08	0.93	0.49	0.29	0.26	0.15	0.17	0.12	0.19	0.19	0.54	0.81	5.22

WBAN : 23157

AVERAGE TEMPERATURE (°F) 2007 BISHOP (KBIH)

YEAR	JAN	FEB	MAR	APR	MAY	JUN	JUL	AUG	SEP	OCT	NOV	DEC	ANNUAL
1978	39.0	42.7	49.7	50.9	60.7	70.3	76.1	74.6	63.8	60.2	43.0	35.6	55.6
1979	34.8	38.7	48.2	55.1	64.0	70.4	76.5	72.6	70.3	57.9	43.6	38.9	55.9
1980	40.2	42.5	43.2	53.0	57.4	67.4	76.6	74.1	66.5	56.5	45.9	42.7	55.5
1981	39.4	44.7	46.2	56.8	63.6	75.8	77.6	76.7	70.1	53.1	46.8	42.7	57.8
1982	31.9	43.5	43.8	52.1	62.3	68.3	75.3	74.4	64.7	54.5	40.4	37.3	54.0
1983	39.7	43.1	46.2	47.9	61.0	70.0	72.5	72.6	68.4	57.3	45.0	40.6	55.4
1984	42.4	43.1	50.6	52.0	68.6	70.5	78.0	75.1	69.4	52.3	42.4	32.1	56.4
1985	38.1	41.7	44.3	57.8	62.6	74.4	78.1	73.2	61.9	54.4	41.8	38.9	55.6
1986	42.3	44.0	50.0	53.0	62.8	72.1	73.3	75.6	60.6	53.9	45.6	38.1	55.9
1987	36.7	41.1	45.8	56.9	62.2	71.6	72.7	74.9	67.9	59.5	44.9	32.4	55.6
1988	36.8	44.9	49.0	53.8	61.1	70.4	79.2	75.1	66.4	61.8	45.3	34.6	56.5
1989	35.3	38.9	51.2	60.5	63.0	71.0	78.1	72.2	66.2	54.8	46.9	40.9	56.6
1990	38.2	39.1	50.5	58.2	61.3	71.7	77.7	73.3	67.8	57.7	45.8	31.6	56.1
1991	37.3	45.8	41.9	51.6	57.8	69.1	77.2	74.5	69.3	59.6	46.1	38.6	55.7
1992	37.5	44.0	47.5	59.0	66.6	68.6	74.7	76.3	69.1	60.2	43.5	34.3	56.8
1993	30.8	37.9	50.1	55.2	64.1	68.7	75.1	73.6	66.5	57.5	42.5	36.8	54.9
1994	39.9	37.7	51.0	55.6	62.4	73.9	79.8	76.8	65.5	54.5	37.2	36.9	55.9
1995		48.3	46.5	52.5	57.7	65.3	74.5	74.6	68.9	57.6	51.1	39.7	
1996	40.5	43.5	48.4	53.9	63.7	72.4	78.8	76.4	66.1	55.1	45.1	39.8	
1997	40.1	42.4	50.1	53.9	66.3	70.4	73.9	74.2	67.1	54.6	44.6	35.4	56.1
1998	39.2	38.1	47.1	49.2	54.1	65.5	75.7	76.2	66.9	52.7	43.4	37.3	53.8
1999	40.6	41.2	47.2	49.8	62.9	70.6	75.5	72.0	67.7	59.3	47.3	40.2	56.2
2000	39.7	42.5	48.1	57.4	66.3	73.8	75.1	75.0	66.5	55.1	39.9	40.3	56.6
2001	36.8	36.2	50.5	51.6	68.4	73.4	74.6	77.1	70.0	60.6	45.1	36.4	56.7
2002	36.6	44.0	45.0	55.5	63.0	74.7	79.8	75.0	68.1	55.5	46.5	36.6	56.7
2003	44.4	41.0	49.8	50.1	63.1	73.7	80.1	75.2	70.5	61.2	40.5	36.5	57.2
2004	37.1	39.5	55.0	55.5	63.7	72.3	77.3	73.7	65.7	53.8	43.5	40.3	56.5
2005	39.8	42.8	48.3	51.3	63.1	68.5	80.6	74.6	63.5	56.6	48.2	40.5	56.5
2006	35.1	42.9	41.4	54.1	64.6	73.8	79.7	72.7	65.7	54.7	47.0	38.1	55.8
2007	36.7	42.8	52.2	56.6	64.5	72.9	79.7	76.3	65.9	55.6	47.7	34.6	57.1
POR= 59 YRS	37.4	41.9	47.1	53.9	62.4	70.9	76.9	74.6	67.3	56.9	45.3	38.1	56.1

HEATING DEGREE DAYS (base 65°F) 2007 BISHOP (KBIH)

YEAR	JUL	AUG	SEP	OCT	NOV	DEC	JAN	FEB	MAR	APR	MAY	JUN	TOTAL
1978-79	0	1	93	165	653	906	931	731	514	291	97	18	4400
1979-80	0	0	6	232	634	805	759	646	667	352	236	44	4381
1980-81	0	0	27	298	567	684	787	563	574	249	90	4	3843
1981-82	0	0	8	361	541	685	1021	593	649	380	111	31	4380
1982-83	3	0	109	317	735	853	775	608	574	508	201	6	4689
1983-84	0	0	45	231	594	749	693	627	440	383	44	8	3814
1984-85	0	0	31	387	668	1014	828	645	632	208	84	20	4517
1985-86	0	0	113	326	687	802	699	583	458	354	134	0	4156
1986-87	1	0	199	336	576	824	871	662	588	239	116	4	4416
1987-88	15	0	1	187	597	1003	869	578	491	330	173	41	4285
1988-89	0	0	69	106	582	933	916	723	421	157	107	7	4021
1989-90	0	0	34	305	536	742	823	719	440	205	122	8	3934
1990-91	0	8	37	227	571	1029	852	530	711	391	225	3	4584
1991-92	0	1	6	200	559	813	845	602	536	186	23	36	3807
1992-93	0	0	0	146	638	947	1056	753	454	291	62	54	4401
1993-94	0	0	55	231	669	868	773	758	426	280	136	1	4197
1994-95	0	0	40	320	828	861		464	565	366	224	83	
1995-96	0	0	18	223	411	773	751	615	508		64	8	
1996-97	0	0	41	322	591	775	766	626	455	330	38	18	3962
1997-98	0	0	23	326	606	910	795	748	550	470	330	56	4814
1998-99	0	0	45	375	641	853	748	659	542	451	102	38	4454
1999-00	0	0	15	173	529	764	778	646	514	223	70	12	3724
2000-01	0	0	47	308	748	759	867	799	440	395	46	1	4410
2001-02	0	0	0	155	590	880	874	582	613	280	119	7	4100
2002-03	0	0	32	290	544	872	630	665	465	442	154	0	4094
2003-04	0	0	2	118	729	878	858	730	304	280	61	6	3966
2004-05	0	0	65	339	637	759	771	613	512	404	124	23	4247
2005-06	0	3	62	256	498	753	919	615	724	330	73	2	4235
2006-07	0	0	65	316	534	825	870	616	380	257	82	22	3967
2007-	0	0	99	282	512	933							

WBAN : 23157

COOLING DEGREE DAYS (base 65°F) 2007 BISHOP (KBIH)

YEAR	JAN	FEB	MAR	APR	MAY	JUN	JUL	AUG	SEP	OCT	NOV	DEC	TOTAL
1978	0	0	0	0	25	167	353	309	64	25	0	0	943
1979	0	0	0	0	70	187	365	243	172	17	0	0	1054
1980	0	0	0	0	6	122	370	289	78	42	0	0	907
1981	0	0	0	9	53	334	398	371	170	0	0	0	1335
1982	0	0	0	0	35	134	331	299	106	0	0	0	905
1983	0	0	0	0	83	164	238	241	156	0	0	0	882
1984	0	0	0	0	159	177	411	320	168	0	0	0	1235
1985	0	0	0	0	17	312	417	260	27	7	0	0	1040
1986	0	0	0	0	73	220	264	334	78	0	0	0	969
1987	0	0	0	1	35	208	264	313	94	24	0	0	939
1988	0	0	0	0	60	209	447	321	117	11	0	0	1165
1989	0	0	0	29	49	197	415	231	77	0	0	0	998
1990	0	0	0	7	11	216	401	273	129	8	0	0	1045
1991	0	0	0	0	10	136	388	302	140	39	0	0	1015
1992	0	0	0	14	81	153	306	359	128	7	0	0	1048
1993	0	0	0	4	42	170	320	275	106	9	0	0	926
1994	0	0	0	5	61	276	466	374	61	1	0	0	1244
1995		0	0	0	5	97	300	303	142	0	0	0	
1996	0	0	0	0	31	236	437	360	82	20	0	0	
1997	0	0	0	4	85	189	282	292	91	8	0	0	951
1998	0	0	0	0	0	77	339	352	110	0	0	0	878
1999	0	0	0	1	42	212	335	224	103	3	0	0	920
2000	0	0	0	1	119	282	320	316	100	7	0	0	1145
2001	0	0	0	0	159	260	305	383	156	24	0	0	1287
2002	0	0	0	3	62	305	468	314	133	0	0	0	1285
2003	0	0	0	0	102	267	475	323	176	7	0	0	1350
2004	0	0	0	0	27	234	391	275	93	0	0	0	1020
2005	0	0	0	0	74	137	490	308	27	3	0	0	1039
2006	0	0	0	13	66	269	458	247	92	4	0	0	1149
2007	0	0	0	12	72	266	463	360	136	0	0	0	1309

SNOWFALL (inches) 2007 BISHOP (KBIH)

YEAR	JUL	AUG	SEP	OCT	NOV	DEC	JAN	FEB	MAR	APR	MAY	JUN	TOTAL
1977-78	0.0	0.0	0.0	0.0	T	4.5	0.4	1.5	T	T	0.0	0.0	6.4
1978-79	0.0	0.0	0.0	1.8	2.1	0.6	4.8	T	0.8	0.0	T	0.0	10.1
1979-80	0.0	0.0	0.0	0.0	0.0	5.5	0.8	0.0	T	1.9	0.4	0.0	8.6
1980-81	0.0	0.0	0.0	0.0	0.0	T	6.0	T	3.8	0.3	0.0	0.0	10.1
1981-82	0.0	0.0	0.0	0.0	2.1	0.0	20.7	T	4.8	0.0	0.0	0.0	27.6
1982-83	0.0	0.0	0.0	0.0	1.2	T	8.1	T	1.1	0.0	0.0	0.0	10.4
1983-84	0.0	0.0	0.0	0.0	1.0	0.0	T	T	0.0	0.0	0.0	0.0	1.0
1984-85	0.0	0.0	0.0	0.0	1.5	7.9	T	T	0.5	0.0	0.0	0.0	9.9
1985-86	0.0	0.0	0.0	0.0	0.6	1.3	0.0	T	T	0.0	0.0	0.0	1.9
1986-87	0.0	0.0	0.0	0.0	0.0	0.0	0.9	0.5	0.0	0.0	T	0.0	1.4
1987-88	0.0	0.0	0.0	0.0	0.0	5.2	8.9	0.0	0.0	0.0	0.4	0.0	14.5
1988-89						0.0	0.0	0.7	0.0	0.0	0.0	0.0	
1989-90	0.0	0.0	0.0	0.0	0.0	0.0	0.1	T	0.0	0.0	0.0	0.0	0.1
1990-91	0.0	0.0	0.0	0.0	0.0	0.0	0.0	0.0	0.0	0.0	0.0	0.0	
1991-92	0.0	0.0	0.0	0.0	0.0	0.0	0.0	0.2		0.0	0.0	0.0	
1992-93	0.0	0.0	0.0	0.0	0.0	1.0	15.8	8.3	0.0	0.0	0.0	0.0	25.1
1993-94	0.0	0.0	0.0	0.0	T	0.0	0.4		0.2	T	0.0	0.0	
1994-95	0.0	0.0	0.0	0.0	T	T	5.9	0.0	T	T	0.0	0.0	5.9
1995-96	0.0	0.0	0.0		0.0								
1996-97													
1997-98													
1998-99													
1999-00													
2000-01													
2001-02													
2002-03													
2003-04													
2004-05													
2005-2006-													
POR= 58 YRS	0.0	0.0	0.0	0.0	0.2	1.0	3.3	1.3	0.6	0.3	0.1	0.0	6.8

WBAN : 23157

REFERENCE NOTES :

<p>PAGE 1: THE TEMPERATURE GRAPH SHOWS NORMAL MAXIMUM AND NORMAL MINIMUM DAILY TEMPERATURES (SOLID CURVES) AND THE ACTUAL DAILY HIGH AND LOW TEMPERATURES (VERTICAL BARS).</p> <p>PAGE 2 AND 3: H/C INDICATES HEATING AND COOLING DEGREE DAYS. RH INDICATES RELATIVE HUMIDITY W/O INDICATES WEATHER AND OBSTRUCTIONS S INDICATES SUNSHINE. PR INDICATES PRESSURE. CLOUDINESS ON PAGE 3 IS THE SUM OF THE CEILOMETER AND SATELLITE DATA NOT TO EXCEED EIGHT EIGHTHS(OKTAS).</p> <p>GENERAL: T INDICATES TRACE PRECIPITATION, AN AMOUNT GREATER THAN ZERO BUT LESS THAN THE LOWEST REPORTABLE VALUE. + INDICATES THE VALUE ALSO OCCURS ON EARLIER DATES. BLANK ENTRIES DENOTE MISSING OR UNREPORTED DATA. NORMALS ARE 30-YEAR AVERAGES (1971 - 2000). ASOS INDICATES AUTOMATED SURFACE OBSERVING SYSTEM. PM INDICATES THE LAST DAY OF THE PREVIOUS MONTH. POR (PERIOD OF RECORD) BEGINS WITH THE JANUARY DATA MONTH AND IS THE NUMBER OF YEARS USED TO COMPUTE THE MEAN. INDIVIDUAL MONTHS WITHIN THE POR MAY BE MISSING. WHEN THE POR FOR A NORMAL IS LESS THAN 30 YEARS, THE NORMAL IS PROVISIONAL AND IS BASED ON THE NUMBER OF YEARS INDICATED. 0.* OR * INDICATES THE VALUE OR MEAN-DAYS-WITH IS BETWEEN 0.00 AND 0.05. CLOUDINESS FOR ASOS STATIONS DIFFERS FROM THE NON-ASOS OBSERVATION TAKEN BY A HUMAN OBSERVER. ASOS STATION CLOUDINESS IS BASED ON TIME-AVERAGED CEILOMETER DATA FOR CLOUDS AT OR BELOW 12,000 FEET AND ON SATELLITE DATA FOR CLOUDS ABOVE 12,000 FEET. THE NUMBER OF DAYS WITH CLEAR, PARTLY CLOUDY, AND CLOUDY CONDITIONS FOR ASOS STATIONS IS THE SUM OF THE CEILOMETER AND SATELLITE DATA FOR THE SUNRISE TO SUNSET PERIOD.</p>	<p>GENERAL CONTINUED: CLEAR INDICATES 0 - 2 OKTAS, PARTLY CLOUDY INDICATES 3 - 6 OKTAS, AND CLOUDY INDICATES 7 OR 8 OKTAS. WHEN AT LEAST ONE OF THE ELEMENTS (CEILOMETER OR SATELLITE) IS MISSING, THE DAILY CLOUDINESS IS NOT COMPUTED. WIND DIRECTION IS RECORDED IN TENS OF DEGREES (2 DIGITS) CLOCKWISE FROM TRUE NORTH. "00" INDICATES CALM. "36" INDICATES TRUE NORTH. RESULTANT WIND IS THE VECTOR AVERAGE OF THE SPEED AND DIRECTION. AVERAGE TEMPERATURE IS THE SUM OF THE MEAN DAILY MAXIMUM AND MINIMUM TEMPERATURE DIVIDED BY 2. SNOWFALL DATA COMPRISE ALL FORMS OF FROZEN PRECIPITATION, INCLUDING HAIL. A HEATING (COOLING) DEGREE DAY IS THE DIFFERENCE BETWEEN THE AVERAGE DAILY TEMPERATURE AND 65 F. DRY BULB IS THE TEMPERATURE OF THE AMBIENT AIR. DEW POINT IS THE TEMPERATURE TO WHICH THE AIR MUST BE COOLED TO ACHIEVE 100 PERCENT RELATIVE HUMIDITY. WET BULB IS THE TEMPERATURE THE AIR WOULD HAVE IF THE MOISTURE CONTENT WAS INCREASED TO 100 PERCENT RELATIVE HUMIDITY.</p> <p>ON JULY 1, 1996, THE NATIONAL WEATHER SERVICE BEGAN USING THE "METAR" OBSERVATION CODE THAT WAS ALREADY EMPLOYED BY MOST OTHER NATIONS OF THE WORLD. THE MOST NOTICEABLE DIFFERENCE IN THIS ANNUAL PUBLICATION WILL BE THE CHANGE IN UNITS FROM TENTHS TO EIGHTS(OKTAS) FOR REPORTING THE AMOUNT OF SKY COVER.</p> <p>NOTE: The "Period of Record:(POR) for all "averages" is based on the "Summary of the Day First Order Station" and "Cooperative Summary of the Day" archives.</p>
---	--

2007 BISHOP CALIFORNIA (KBIH)

The station at Bishop is located at the Municipal Airport 2 1/2 miles east of the town, 1 mile west of the Owens River, on the floor of the Owens Valley, which is orientated northwest to southeast and at this point is 12 miles wide, level, and semi-arid. Peaks of the 12,000 to 14,000 feet Sierra Nevadas are 25 miles west, and the 12,000 to 14,000 feet White Mountains are 10 miles east. The northern end of the valley is partly cut off by 6,000 to 8,000 feet mountains about 45 miles distant. The southern end of the valley makes a gradual descent to the Mojave Desert about 150 miles distant.

During the summer and autumn, the Mojave Desert causes an early morning and late evening northerly wind. Conversely, in the heat of the afternoon, it causes a southerly wind that is occasionally strong. Summer skies are mostly clear with thunderstorms from May through August. The days are hot and dry, the nights cool.

Winter and spring, although seasons of adverse weather, are quite mild. The skies are partly cloudy with the years greatest amounts of precipitation falling during the months of November through April. At times, strong northerly winds blow, especially in the spring during the months of February, March, and April. East and west winds frequently give pronounced foehn effects and turbulence.

During the winter and spring, strong westerly winds aloft, flowing over the Sierra Nevadas, create the Sierra Wave, known to sailplane pilots the world over.

Based on the 1951-1980 period, the average first occurrence of 32 degrees Fahrenheit in the fall is October 13 and the average last occurrence in the spring is May 7.

Station Location

BISHOP

LOCATION	Occupied From	Occupied To	Airline Distances and Directions from previous Location	Latitude		Longitude		ELEVATION ABOVE								REMARKS
				NORTH	WEST	GROUND TEMPERATURE SITE	WIND INSTRUMENT	GROUND				WEIGHING RAIN GAUGE	8 INCH RAIN GAUGE	HYGROTHERMOMETER	AUTOMATIC OBSERVING EQUIPMENT *	
								EXTREME THERMOMETERS	PSYCHROMETER	SUNSHINE SWITCH	TIPPING BUCKET RAIN GAUGE					
*NOTES:																
<u>AIRPORT</u>																
Base Operations Bldg. Bishop Air Base	3/28/44	10/18/45	1.6 mi. E	37° 22'	118° 22'	4108	44	4	4					3		
Ray Residence 1-1/2 miles W of P.O.	10/18/45	5/4/46	3.1 mi. W	37° 22'	118° 28'		19	5	4					4		
150 Johnson Drive 1/2 mile E of P.O.	5/4/46	3/9/47	2 mi. E	37° 22'	118° 26'	4119	21	4	4					3		
Base Operations Bldg. Bishop Airport	3/9/47	5/22/79	1.6 mi. ENE	37° 22'	118° 22'	4108	40 c20	4	4			a3 b5		4	a. Installed 1/6/54. b. Raised 1/1/56. c. Lowered 2/15/66.	
NWS Building Bishop Airport	5/22/79	05/01/94	360 ft. WSW	37° 22'	118° 22'	4110	d20	5	4			5 e5	4 e5		d. Not moved 5/22/79. e. Minor move 9/15/79.	
Bishop Airport	05/01/94	Present	NA	37° 22'	118° 22'	4109	f4109								s ASOS Commissioned 05/01/94 f. Ground elevation	

For Hard Copy Subscription:

Price and ordering information: NCDC Subscribing Service Center, 310 State Route 956, Building 300, Rocket Center, WV 26726.

INQUIRES/COMMENTS CALL: Toll Free (866) 742-3322

Visit our Web Site for other weather data: www.ncdc.noaa.gov

Non-Subscription Request:

NCDC Customer Services;
Phone: 828-271-4800
Fax: 828-271-4876
Email: ncdc.orders@noaa.gov

OFFICIAL BUSINESS
PENALTY FOR PRIVATE USE \$300
CHANGE SERVICE REQUESTED

FIRST CLASS
POSTAGE & FEES PAID
United States Department of Commerce
NOAA Permit No. G - 19

* NOTES: For earlier station history see previous edition.