

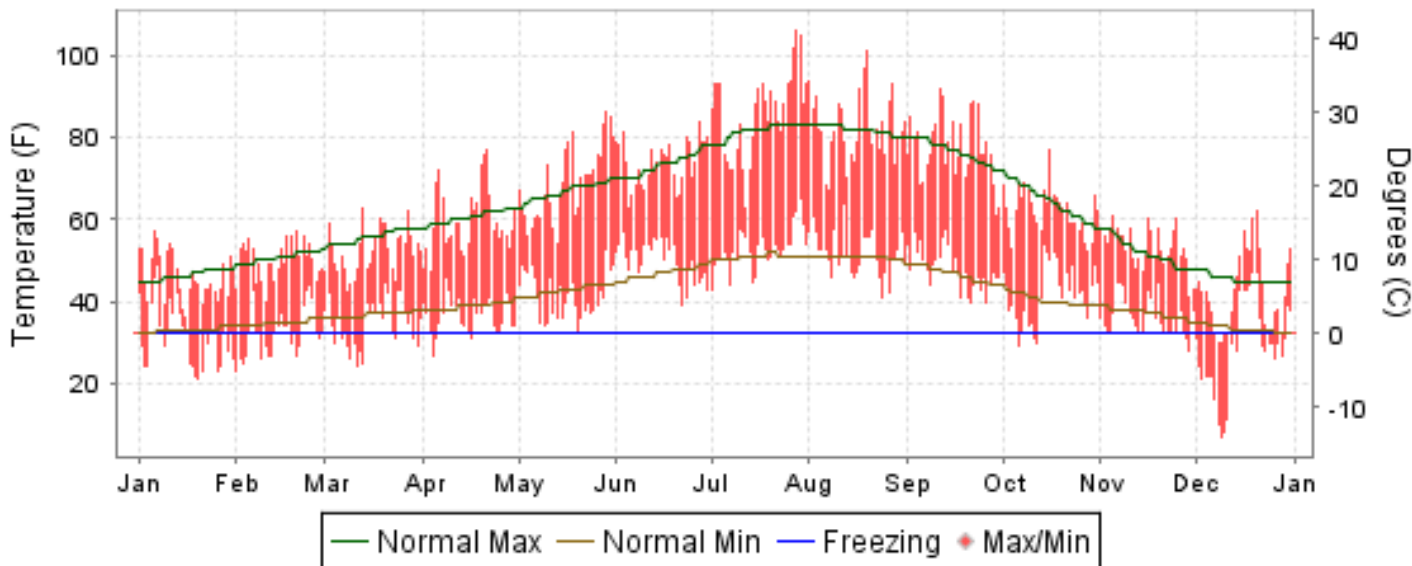


2009 LOCAL CLIMATOLOGICAL DATA ANNUAL SUMMARY WITH COMPARATIVE DATA

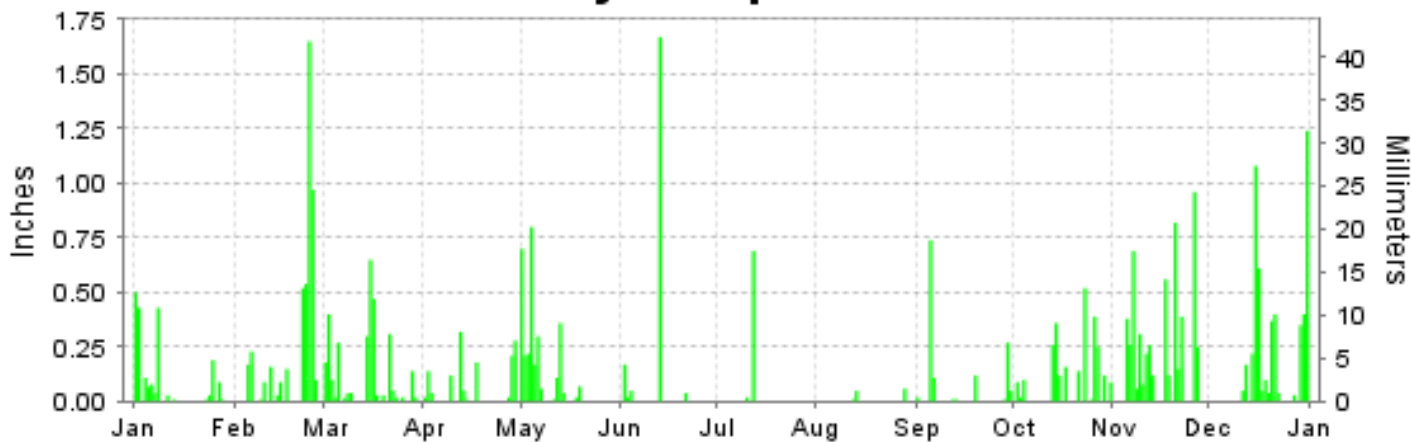
ISSN 0198-4136

EUGENE, OREGON (KEUG)

Daily Max/Min Temperature



Daily Precipitation



Daily Station Pressure



I CERTIFY THAT THIS IS AN OFFICIAL PUBLICATION OF THE NATIONAL OCEANIC AND ATMOSPHERIC ADMINISTRATION, AND IS COMPILED FROM RECORDS ON FILE AT THE NATIONAL CLIMATIC DATA CENTER.

NATIONAL
OCEANIC AND
ATMOSPHERIC ADMINISTRATION

NATIONAL
ENVIRONMENTAL SATELLITE, DATA
AND INFORMATION SERVICE

NATIONAL
CLIMATIC DATA CENTER
ASHEVILLE, NORTH CAROLINA

Thomas R. Karl
DIRECTOR
NATIONAL CLIMATIC DATA CENTER

METEOROLOGICAL DATA FOR 2009

EUGENE (KEUG)

LATITUDE: 44° 8' N LONGITUDE: -123° 12' W ELEVATION (FT): GRND: 355 BARO: 363 TIME ZONE: PACIFIC (UTC -8) WBAN: 24221

ELEMENT		JAN	FEB	MAR	APR	MAY	JUN	JUL	AUG	SEP	OCT	NOV	DEC	YEAR	
TEMPERATURE °F	MEAN DAILY MAXIMUM	46.1	50.1	52.3	59.7	68.9	73.8	86.0	82.3	77.5	62.1	53.2	42.4	62.9	
	HIGHEST DAILY MAXIMUM	57	57	63	77	86	84	106	101	92	77	61	62	106	
	DATE OF OCCURRENCE	06	20	13	21	29	27	28	19	11	16	05	20	JUL 28	
	MEAN DAILY MINIMUM	31.6	32.3	34.8	36.7	41.5	50.0	52.9	51.7	48.2	41.8	36.3	28.9	40.6	
	LOWEST DAILY MINIMUM	21	23	24	27	33	39	43	41	40	29	28	7	7	
	DATE OF OCCURRENCE	20	01	11	04	20	22	01	24	26+	06	29	09	DEC 09	
	AVERAGE DRY BULB	38.9	41.2	43.6	48.2	55.2	61.9	69.5	67.0	62.9	52.0	44.8	35.7	51.7	
	MEAN WET BULB	37.5	39.1	40.9	44.5	51.1	55.5	59.4	58.1	55.1	48.5	42.3	34.2	47.2	
	MEAN DEW POINT	35.7	36.8	37.6	40.7	47.1	50.7	52.8	52.2	49.8	45.1	39.6	31.3	43.3	
	NUMBER OF DAYS WITH:														
	MAXIMUM >= 90°	0	0	0	0	0	0	0	12	6	2	0	0	0	20
	MAXIMUM <= 32°	0	0	0	0	0	0	0	0	0	0	0	7	7	7
	MINIMUM <= 32°	18	15	12	4	0	0	0	0	0	3	7	21	80	80
MINIMUM <= 0°	0	0	0	0	0	0	0	0	0	0	0	0	0	0	
H/C	HEATING DEGREE DAYS	802	662	658	496	302	93	25	37	88	397	598	904	5062	
	COOLING DEGREE DAYS	0	0	0	0	7	10	170	110	33	0	0	0	330	
RH	MEAN (PERCENT)	90	87	81	78	75	71	61	65	69	80	84	85	77	
	HOUR 04 LST	95	95	91	93	94	90	87	86	88	91	89	88	91	
	HOUR 10 LST	86	83	75	67	64	61	50	54	60	73	79	83	70	
	HOUR 16 LST	83	76	67	62	55	51	36	40	44	67	81	83	62	
	HOUR 22 LST	94	93	88	85	85	83	73	76	78	85	88	87	85	
S	PERCENT POSSIBLE SUNSHINE														
W/O	NUMBER OF DAYS WITH:														
	HEAVY FOG(VISBY <= 1/4 MI)	10	7	2	2	1	1	0	1	3	7	5	15	54	
	THUNDERSTORMS	0	0	0	1	0	2	1	0	2	3	2	0	11	
CLOUDNESS	SUNRISE-SUNSET: (OKTAS)														
	CEILOMETER (<= 12,000 FT.)														
	SATELLITE (> 12,000 FT.)														
	MIDNIGHT-MIDNIGHT: (OKTAS)														
	CEILOMETER (<= 12,000 FT.)														
SATELLITE (> 12,000 FT.)															
NUMBER OF DAYS WITH:															
CLEAR															
PARTLY CLOUDY															
CLOUDY															
PR	MEAN STATION PRESS. (IN.)	29.90	29.58	29.70	29.72	29.65	29.58	29.61	29.62	29.63	29.65	29.68	29.67	29.67	
	MEAN SEA-LEVEL PRESS. (IN.)	30.31	30.00	30.11	30.13	30.05	29.99	30.01	30.03	30.03	30.05	30.09	30.07	30.07	
WINDS	RESULTANT SPEED (MPH)	1.6	0.5	4.1	1.4	1.5	2.4	2.3	2.3	1.3	1.6	5.3	0.5	1.2	
	RES. DIR. (TENS OF DEGS.)	20	22	22	25	27	31	33	31	29	19	18	17	24	
	MEAN SPEED (MPH)	5.5	5.7	7.4	5.6	6.4	6.6	6.8	6.6	6.2	5.1	7.3	5.3	6.2	
	PREVAIL.DIR.(TENS OF DEGS.)	18	36	18	17	01	01	01	01	02	16	18	01	18	
	MAXIMUM 2-MINUTE WIND														
	SPEED (MPH)	33	24	29	26	33	30	28	24	24	28	33	28	33	
	DIR. (TENS OF DEGS.)	23	20	19	27	23	20	03	01	21	24	18	36	18	
	DATE OF OCCURRENCE	02	12	03	13	02	04	10	17	06	14	22	06	NOV 22	
	MAXIMUM 3-SECOND WIND:														
	SPEED (MPH)	46	31	37	35	45	37	33	31	29	36	45	33	46	
DIR. (TENS OF DEGS.)	24	26	19	25	23	19	03	36	01	16	25	36	24		
DATE OF OCCURRENCE	02	25	03	13	02	04	10	17	20	14	22	06	JAN 02		
PRECIPITATION	WATER EQUIVALENT:														
	TOTAL (IN.)	2.03	4.71	3.11	1.39	3.07	1.95	0.71	0.12	1.34	2.63	5.63	5.15	31.84	
	GREATEST 24-HOUR (IN.)	0.84	1.75	0.89	0.32	0.93	1.67	0.69	0.06	0.74	0.60	1.21	1.24	1.75	
	DATE OF OCCURRENCE	24-25	23-24	14-15	12	04-05	13	12	28	05	26-27	26-27	31	FEB 23-24	
	NUMBER OF DAYS WITH:														
	PRECIPITATION 0.01	14	13	19	11	13	5	2	3	9	14	16	15	134	
PRECIPITATION 0.10	5	9	9	6	8	2	1	0	4	10	14	10	78		
PRECIPITATION 1.00	0	1	0	0	0	1	0	0	0	0	0	2	4		
SNOWFALL	SNOW,ICE PELLETS,HAIL														
	TOTAL (IN.)														
	GREATEST 24-HOUR (IN.)														
	DATE OF OCCURRENCE														
	NUMBER OF DAYS WITH:														
SNOWFALL >= 1.0															

NORMALS, MEANS, AND EXTREMES EUGENE (KEUG)

LATITUDE:
44 ° 8 'N

LONGITUDE:
-123° 12'W

ELEVATION (FT):
GRND: 355 BARO: 363

TIME ZONE:
PACIFIC (UTC -8)

WBAN: 24221

	ELEMENT	POR	JAN	FEB	MAR	APR	MAY	JUN	JUL	AUG	SEP	OCT	NOV	DEC	YEAR
TEMPERATURE °F	NORMAL DAILY MAXIMUM	30	46.5	50.7	55.9	60.6	66.8	73.3	81.5	81.9	76.6	64.6	52.1	45.7	63.0
	MEAN DAILY MAXIMUM	70	46.3	50.7	55.7	60.6	67.4	73.5	82.4	81.9	76.4	64.3	52.4	46.7	63.2
	HIGHEST DAILY MAXIMUM	67	67	72	78	86	95	102	106	108	103	94	76	68	108
	YEAR OF OCCURRENCE		2005	1995	2003	1957	2008	1992	2009	1981	1988	1980	1975	1979	AUG 1981
	MEAN OF EXTREME MAXS.	70	59.1	62.9	68.2	75.5	83.8	90.1	96.8	95.8	92.2	79.5	64.8	59.5	77.4
	NORMAL DAILY MINIMUM	30	33.0	34.9	36.7	38.9	42.7	47.0	50.8	50.8	46.7	40.5	37.2	33.3	41.0
	MEAN DAILY MINIMUM	70	33.4	34.8	36.9	39.2	43.5	47.8	51.4	51.2	47.2	41.8	37.6	34.6	41.6
	LOWEST DAILY MINIMUM	67	-4	-3	20	27	28	32	39	38	0	17	12	-12	-12
	YEAR OF OCCURRENCE		1957	1950	1956	2009	1954	1976	1986	2008	1996	2006	1978	1972	DEC 1972
	MEAN OF EXTREME MINS.	70	20.2	23.5	28.0	30.7	34.1	38.7	43.1	43.0	37.5	30.0	25.7	22.0	31.4
	NORMAL DRY BULB	30	39.8	42.8	46.3	49.8	54.8	60.2	66.2	66.4	61.7	52.6	44.7	39.5	52.1
	MEAN DRY BULB	70	39.9	42.8	46.3	49.9	55.5	60.7	66.9	66.6	61.8	53.1	45.1	40.7	52.4
	MEAN WET BULB	26	39.0	40.1	43.2	46.0	50.4	53.9	57.5	57.2	53.7	48.5	43.1	38.2	47.6
	MEAN DEW POINT	26	37.8	38.4	41.1	43.5	47.7	50.7	53.3	52.8	49.9	46.1	41.9	37.0	45.0
	NORMAL NO. DAYS WITH: MAXIMUM >= 90	30	0.0	0.0	0.0	0.0	0.2	1.0	5.9	5.7	2.5	0.1	0.0	0.0	15.4
	MAXIMUM <= 32	30	1.3	0.5	0.0	0.0	0.0	0.0	0.0	0.0	0.0	0.0	0.2	1.4	3.4
MINIMUM <= 32	30	13.7	9.3	5.9	2.5	0.5	*	0.0	0.0	0.2	2.3	7.4	12.5	54.3	
MINIMUM <= 0	30	0.0	0.0	0.0	0.0	0.0	0.0	0.0	0.0	0.0	0.0	0.0	0.1	0.1	
H/C	NORMAL HEATING DEG. DAYS	30	769	615	564	443	308	152	45	31	115	370	594	780	4786
	NORMAL COOLING DEG. DAYS	30	0	0	0	0	5	21	95	88	32	1	0	0	242
RH	NORMAL (PERCENT)	30	88	86	82	78	75	72	65	65	69	80	88	90	78
	HOURLY 04 LST	30	91	92	92	91	91	90	88	88	89	93	93	92	91
	HOURLY 10 LST	30	89	87	80	73	69	65	59	61	66	79	88	90	76
	HOURLY 16 LST	30	80	74	65	60	57	51	41	39	44	59	79	84	61
	HOURLY 22 LST	30	90	90	87	84	83	81	74	74	77	86	92	92	84
S	PERCENT POSSIBLE SUNSHINE														
W/O	MEAN NO. DAYS WITH: HEAVY FOG(VISBY <= 1/4 MI)	46	9.5	6.8	4.1	2.5	1.6	1.1	0.4	0.9	3.4	10.0	10.2	9.7	60.2
	THUNDERSTORMS	60	0.2	0.2	0.3	0.5	0.8	0.6	0.5	0.5	0.5	0.2	0.2	0.2	4.7
CLOUDNESS	MEAN: SUNRISE-SUNSET (OKTAS)														
	MIDNIGHT-MIDNIGHT (OKTAS)														
	MEAN NO. DAYS WITH: CLEAR	1	1.0	1.0	5.0		2.0	2.0							
	PARTLY CLOUDY	1	1.0	1.0			4.0	2.0							
CLOUDY	1	1.0	4.0	13.0		5.0									
PR	MEAN STATION PRESSURE(IN)	26	29.71	29.67	29.67	29.67	29.65	29.65	29.64	29.62	29.62	29.68	29.69	29.70	29.66
	MEAN SEA-LEVEL PRES. (IN)	26	30.12	30.09	30.07	30.08	30.06	30.05	30.04	30.02	30.02	30.08	30.10	30.12	30.07
WINDS	MEAN SPEED (MPH)	26	7.2	7.3	7.4	7.2	6.8	7.2	7.6	7.3	7.0	6.5	7.2	7.2	7.2
	PREVAIL.DIR(TENS OF DEGS)	30	19	19	19	19	36	36	36	36	36	19	19	19	36
	MAXIMUM 2-MINUTE: SPEED (MPH)	14	35	60	37	36	36	30	28	26	32	39	41	44	60
	DIR. (TENS OF DEGS)		18	19	22	23	22	20	03	23	33	23	17	24	19
	YEAR OF OCCURRENCE		2008	2002	1999	2007	2000	2009	2009	2004	2004	1996	1998	2006	FEB 2002
	MAXIMUM 3-SECOND SPEED (MPH)	14	48	70	52	46	46	40	36	35	40	52	48	54	70
	DIR. (TENS OF DEGS)		18	19	17	22	17	26	36	36	22	23	18	25	19
YEAR OF OCCURRENCE		2008	2002	1999	2003	2005	2008	2008	2008	2007	1996	1998	2006	FEB 2002	
PRECIPITATION	NORMAL (IN)	30	7.65	6.35	5.80	3.66	2.66	1.53	0.64	0.99	1.54	3.35	8.44	8.29	50.90
	MAXIMUM MONTHLY (IN)	67	15.36	16.89	12.46	7.85	6.92	4.76	3.00	5.79	4.65	12.66	20.48	20.99	20.99
	YEAR OF OCCURRENCE		1995	1996	1974	1993	1993	1952	1987	1968	1986	1950	1973	1964	DEC 1964
	MINIMUM MONTHLY (IN)	67	0.31	0.86	0.79	0.49	0.14	T	0.00	0.00	0.00	0.11	1.20	1.24	0.00
	YEAR OF OCCURRENCE		1985	1964	1965	1985	1992	1951	1967	1967	1999	1988	1956	1976	SEP 1999
	MAXIMUM IN 24 HOURS (IN)	67	4.88	4.81	2.44	2.38	2.37	2.36	2.44	1.92	1.68	3.85	5.07	5.15	5.15
	YEAR OF OCCURRENCE		1974	1984	1963	1992	1972	1952	1987	1983	1981	1955	1996	1981	DEC 1981
	NORMAL NO. DAYS WITH: PRECIPITATION >= 0.01	30	17.1	15.8	17.3	14.2	10.8	7.4	3.2	4.1	5.9	10.9	17.7	17.3	141.7
PRECIPITATION >= 1.00	30	2.1	1.4	1.2	0.6	0.3	0.2	*	0.2	0.2	0.6	2.5	2.3	11.6	
SNOWFALL	NORMAL (IN)	30	3.1	0.9	0.2	T	T	0.0	0.0	0.0	0.0	T	0.2	1.7	6.1
	MAXIMUM MONTHLY (IN)	53	47.1	8.8	10.8	T	T	T	0.0	0.0	0.0	T	6.0	10.2	47.1
	YEAR OF OCCURRENCE		1969	1990	1951	1995	1986	1995			1986	1984	1955	1964	JAN 1969
	MAXIMUM IN 24 HOURS (IN)	53	22.9	5.7	4.9	T	T	T	0.0	0.0	T	T	5.0	6.3	22.9
	YEAR OF OCCURRENCE		1969	1993	1951	1995	1986	1995			1986	1984	1955	1972	JAN 1969
	MAXIMUM SNOW DEPTH (IN)	48	34	16	4	0	0	0	0	0	0	0	5	7	34
	YEAR OF OCCURRENCE		1969	1969	1960								1955	1972	JAN 1969
NORMAL NO. DAYS WITH: SNOWFALL >= 1.0	30	0.4	0.4	0.0	0.0	0.0	0.0	0.0	0.0	0.0	0.0	0.1	0.6	1.5	

PRECIPITATION (inches) 2009 EUGENE (KEUG)

YEAR	JAN	FEB	MAR	APR	MAY	JUN	JUL	AUG	SEP	OCT	NOV	DEC	ANNUAL
1980	7.45	4.68	5.11	4.20	1.39	2.06	0.39	0.02	0.75	1.90	8.66	14.73	51.34
1981	2.13	4.35	4.16	2.69	3.27	3.51	0.08	T	3.15	5.42	9.51	17.63	55.90
1982	9.31	8.14	4.88	6.89	0.26	1.92	0.54	0.72	2.81	3.95	7.07	13.53	60.02
1983	6.75	12.28	10.58	3.35	1.81	1.78	1.77	3.19	0.54	1.36	13.13	7.47	64.01
1984	2.11	9.58	6.36	5.41	3.91	3.88	0.27	0.03	0.94	6.05	18.67	4.56	61.77
1985	0.31	5.15	5.65	0.49	1.53	2.51	1.37	0.04	2.13	4.83	6.31	3.51	33.83
1986	6.97	14.22	4.41	1.85	3.21	0.33	0.42	0.04	4.65	2.46	11.04	3.30	52.90
1987	9.66	4.47	2.81	2.04	2.00	0.07	3.00	0.26	0.20	0.24	4.65	15.40	44.80
1988	8.72	1.59	4.78	5.65	3.71	2.37	0.11	0.04	1.22	0.11	14.27	5.18	47.75
1989	6.68	3.45	10.93	1.73	3.85	1.03	0.49	1.21	0.64	2.95	5.00	2.70	40.66
1990	15.09	6.32	3.43	2.44	2.99	2.01	0.88	2.38	0.28	7.59	7.59	4.47	55.47
1991	3.73	3.58	9.79	5.22	6.03	0.99	0.64	0.68	0.10	1.93	10.47	5.28	48.44
1992	4.57	5.15	2.10	7.82	0.14	1.68	1.32	0.10	0.99	4.60	6.54	12.59	47.60
1993	6.85	2.64	8.58	7.85	6.92	3.70	1.14	1.80	T	1.45	1.98	10.82	53.73
1994	5.50	5.58	5.58	2.02	1.58	1.14	0.02	T	2.04	7.49	9.58	6.10	46.63
1995	15.36	3.74	6.42	5.59	2.10	2.33	1.13	0.98	1.10	3.91	9.47	13.43	65.56
1996	14.74	16.89	2.45	3.91	3.50	0.39	0.54	0.09	2.50	4.50	12.06	14.95	76.52
1997	5.93	2.06	7.03	3.30	2.64	1.88	0.10	1.59	3.22	4.37	4.28	2.23	38.63
1998	8.08	6.21	5.13	2.61	4.98	0.79	T	T	0.35	2.34	11.35	8.53	50.37
1999	7.66	10.03	4.97	0.77	2.90	0.66	0.26	0.92	0.00	2.60	8.02	3.65	42.44
2000	9.57	6.00	2.37	2.09	3.10	0.70	0.42	T	0.99	3.06	1.61	4.10	34.01
2001	1.50	1.69	2.48	2.05	1.11	1.39	0.42	0.44	0.63	2.69	6.88	6.42	27.70
2002	7.84	2.41	4.28	1.92	2.14	0.42	0.01	0.12	0.85	0.40	4.72	12.05	37.16
2003	6.76	2.79	5.68	5.63	1.06	0.19	0.00	0.08	0.80	1.95	5.73	10.61	41.28
2004	7.07	4.11	1.80	2.69	1.73	1.36	0.06	0.80	2.07	3.47	2.21	4.11	31.48
2005	1.66	1.27	3.57	2.55	3.85	1.37	0.22	0.37	1.04	2.95	5.19	10.70	34.74
2006	12.68	3.02	4.55	1.94	3.02	0.84	0.09	0.00	0.52	0.66	14.28	7.68	49.28
2007	4.04	5.22	1.96	2.22	1.34	0.38	0.46	0.61	1.85	4.62	4.46	7.08	34.24
2008	8.32	1.65	4.49	1.63	0.55	0.62	0.05	1.10	0.22	1.73	3.97	4.84	29.17
2009	2.03	4.71	3.11	1.39	3.07	1.95	0.71	0.12	1.34	2.63	5.63	5.15	31.84
POR= 70 YRS	7.31	5.25	4.91	2.89	2.31	1.33	0.41	0.73	1.38	3.52	7.25	7.77	45.06

WBAN : 24221

AVERAGE TEMPERATURE (°F) 2009 EUGENE (KEUG)

YEAR	JAN	FEB	MAR	APR	MAY	JUN	JUL	AUG	SEP	OCT	NOV	DEC	ANNUAL
1980	35.7	42.9	45.5	50.8	53.2	57.5	66.8	63.5	61.9	54.1	46.4	42.3	51.7
1981	40.4	43.4	45.9	49.9	54.4	59.5	64.8	68.2	62.0	50.2	45.4	41.8	52.2
1982	36.2	41.3	44.1	46.4	53.9	62.2	64.4	66.5	60.9	52.2	40.8	39.3	50.7
1983	41.7	45.1	48.3	49.1	56.1	58.6	63.0	66.1	59.1	52.1	46.6	36.3	51.8
1984	40.5	44.2	48.5	47.9	53.2	58.3	65.9	66.0	60.8	50.8	43.8	37.3	51.4
1985	34.2	40.6	42.8	52.0	54.9	61.4	69.9	65.8	58.3	51.8	37.6	33.0	50.2
1986	43.5	44.7	50.5	48.5	55.3	63.6	63.1	69.9	58.8	54.4	46.5	39.9	53.2
1987	39.6	43.7	47.3	52.4	57.9	63.3	64.4	67.6	62.7	56.5	46.8	39.8	53.5
1988	39.3	44.1	46.8	51.7	54.3	60.7	67.9	66.5	63.0	57.2	47.0	40.6	53.3
1989	42.1	35.8	47.2	55.6	56.5	63.1	65.3	66.7	64.6	53.9	47.4	41.1	53.3
1990	43.1	41.5	48.8	53.4	55.2	62.1	70.4	69.6	64.8	52.1	46.9	34.1	53.5
1991	38.9	48.7	44.4	48.8	52.7	57.5	67.5	67.7	65.1	54.3	47.6	41.3	52.9
1992	44.0	47.5	50.3	54.1	60.1	65.1	68.3	68.9	62.9	54.5	45.9	39.5	55.1
1993	35.3	38.5	49.6	51.2	58.6	60.5	62.5	66.8	62.7	56.1	38.5	39.3	51.6
1994	42.3	41.7	48.1	53.0	58.1	61.0	69.7	66.7	64.7	53.2	42.9	42.8	53.7
1995	44.7	47.8	47.9	50.4	57.6	61.1	68.8	65.5	64.7	51.6	50.3	42.6	54.4
1996	41.8	42.5	47.3	52.1	52.8	59.3	69.5	66.7		51.9	45.3	42.4	
1997	40.9	42.3	46.8	50.0	59.0	59.0	66.2	69.0	62.8	50.8	47.3	38.9	52.8
1998	44.2	45.4	47.0	49.5	53.2	59.8	69.2	67.8	63.8	52.0	47.3	39.6	53.2
1999	42.1	43.3	44.3	49.4	52.2	57.8	64.5	66.9	61.6	52.5	49.2	40.4	52.0
2000	39.3	43.6	44.6	50.8	55.1	62.1	64.9	65.0	62.0	52.5	40.3	40.8	51.8
2001	40.1	41.0	46.5	47.6	55.5	56.9	64.8	66.9	63.6	52.1	47.6	41.7	52.0
2002	41.8	44.4	44.0	50.9	53.3	60.4	68.0	65.8	62.0	51.4	45.4	43.7	52.6
2003	45.2	42.5	49.2	49.4	54.8	62.3	68.9	67.5	64.0	56.2	43.0	42.4	53.8
2004	41.3	43.6	49.3	51.6	56.4	62.0	69.3	69.2	60.1	53.7	43.9	42.4	53.6
2005	41.5	41.6	49.2	50.1	57.3	59.3	68.2	68.2	60.5	54.3	42.1	39.2	52.6
2006	43.9	41.1	44.4	50.7	55.8	62.4	68.4	65.5	61.9	50.5	46.2	39.6	52.5
2007	37.6	43.3	49.1	49.1	53.8	59.1	68.4	65.8	60.1	51.2	42.5	39.9	51.7
2008	36.9	42.5	43.4	46.7	56.0	58.1	67.2	67.2	61.9	51.6	48.0	37.6	51.4
2009	38.9	41.2	43.6	48.2	55.2	61.9	69.5	67.0	62.9	52.0	44.8	35.7	51.7
POR= 70 YRS	39.9	42.8	46.3	49.9	55.5	60.7	66.9	66.6	61.8	53.1	45.1	40.7	52.4

HEATING DEGREE DAYS (base 65°F) 2009 EUGENE (KEUG)

YEAR	JUL	AUG	SEP	OCT	NOV	DEC	JAN	FEB	MAR	APR	MAY	JUN	TOTAL
1980-81	29	65	101	344	551	697	752	599	585	446	321	164	4654
1981-82	64	33	121	450	580	710	887	657	642	551	335	124	5154
1982-83	67	20	137	392	719	791	716	553	511	470	287	189	4852
1983-84	78	15	171	393	544	879	753	596	502	504	359	207	5001
1984-85	33	19	145	440	628	851	948	674	678	383	311	128	5238
1985-86	5	43	197	405	817	983	662	562	444	489	321	93	5021
1986-87	74	3	213	319	548	773	784	589	539	370	245	105	4562
1987-88	60	17	94	262	537	774	790	600	561	395	327	136	4553
1988-89	29	31	108	244	533	749	705	811	544	278	271	87	4390
1989-90	31	21	65	336	522	733	674	654	498	340	296	106	4276
1990-91	16	10	39	394	532	952	803	449	632	479	376	220	4902
1991-92	17	25	59	325	515	729	643	502	448	326	165	66	3820
1992-93	7	14	91	319	566	782	912	732	472	406	191	143	4635
1993-94	76	36	108	274	787	792	695	648	516	353	208	124	4617
1994-95	14	6	56	360	657	683	620	475	523	433	232	151	4210
1995-96	9	39	49	411	437	686	711	644	540	378	371	168	4443
1996-97	31	39		402	583	693	739	630	557	445	191	177	
1997-98	23	1	84	434	525	801	639	544	550	456	358	150	4565
1998-99	7	22	79	394	523	782	706	602	637	462	391	211	4816
1999-00	66	30	120	383	468	754	790	611	628	417	301	112	4680
2000-01	43	64	113	378	732	743	766	668	565	514	297	241	5124
2001-02	44	19	80	393	513	716	712	569	643	418	355	148	4610
2002-03	19	57	104	416	581	655	606	621	484	460	306	119	4428
2003-04	12	3	78	274	654	694	728	613	478	394	257	112	4297
2004-05	12	8	143	345	627	692	719	652	480	441	242	170	4531
2005-06	7	13	139	324	681	795	647	663	633	420	283	107	4712
2006-07	30	48	107	443	559	783	845	600	485	470	338	175	4883
2007-08	3	28	163	421	667	770	864	646	663	540	296	232	5293
2008-09	20	38	116	410	502	842	802	662	658	496	302	93	4941
2009-	25	37	88	397	598	904							

WBAN : 24221

COOLING DEGREE DAYS (base 65°F) 2009 EUGENE (KEUG)

YEAR	JAN	FEB	MAR	APR	MAY	JUN	JUL	AUG	SEP	OCT	NOV	DEC	TOTAL
1980	0	0	0	0	0	0	91	23	16	12	0	0	142
1981	0	0	0	1	0	4	63	138	38	0	0	0	244
1982	0	0	0	0	0	51	59	73	20	0	0	0	203
1983	0	0	0	0	17	3	23	56	0	0	0	0	99
1984	0	0	0	0	2	14	69	55	23	5	0	0	168
1985	0	0	0	0	4	28	166	73	2	0	0	0	273
1986	0	0	0	0	26	55	20	165	34	0	0	0	300
1987	0	0	0	0	32	59	48	104	30	4	0	0	277
1988	0	0	0	0	2	15	127	85	53	8	0	0	290
1989	0	0	0	1	14	38	47	81	60	0	0	0	241
1990	0	0	0	0	0	26	192	157	42	0	0	0	417
1991	0	0	0	0	0	2	101	117	71	1	0	0	292
1992	0	0	0	2	21	75	115	144	34	0	0	0	391
1993	0	0	0	0	0	12	9	95	46	5	0	0	167
1994	0	0	0	0	1	12	166	64	59	0	0	0	302
1995	0	0	0	0	7	41	135	61	47	0	0	0	291
1996	0	0	0	0	0	3	176	99		2	0	0	
1997	0	0	0	0	13	3	69	131	24	0	0	0	240
1998	0	0	0	0	1	0	142	117	50	0	0	0	310
1999	0	0	0	0	0	5	56	97	26	0	0	0	184
2000	0	0	0	0	0	34	46	70	32	0	0	0	182
2001	0	0	0	0	10	3	46	85	43	1	0	0	188
2002	0	0	0	0	0	19	119	89	20	0	0	0	247
2003	0	0	0	0	0	44	136	90	55	8	0	0	333
2004	0	0	0	0	0	29	152	147	1	1	0	0	330
2005	0	0	0	0	9	6	112	120	10	0	0	0	257
2006	0	0	0	0	4	37	141	70	23	0	1	0	276
2007	0	0	0	0	0	4	115	62	24	0	0	0	205
2008	0	0	0	0	23	31	95	115	29	2	0	0	295
2009	0	0	0	0	7	10	170	110	33	0	0	0	330

SNOWFALL (inches) 2009 EUGENE (KEUG)

YEAR	JUL	AUG	SEP	OCT	NOV	DEC	JAN	FEB	MAR	APR	MAY	JUN	TOTAL
1979-80	0.0	0.0	0.0	0.0	0.0	T	T	0.0	T	0.0	0.0	0.0	T
1980-81	0.0	0.0	0.0	0.0	0.0	T	0.0	0.0	T	T	T	T	T
1981-82	0.0	0.0	0.0	0.0	T	T	5.0	2.1	T	T	0.0	0.0	7.1
1982-83	0.0	0.0	0.0	T	0.0	T	0.0	0.0	0.0	T	0.0	0.0	T
1983-84	0.0	0.0	0.0	0.0	T	3.7	T	T	T	T	T	0.0	3.7
1984-85	0.0	0.0	0.0	T	0.0	T	T	0.2	T	T	0.0	0.0	0.2
1985-86	0.0	0.0	0.0	0.0	2.3	4.7	0.0	2.8	0.0	T	T	0.0	9.8
1986-87	0.0	0.0	T	0.0	0.0	0.0	0.0	0.0	T	0.0	0.0	0.0	T
1987-88	0.0	0.0	0.0	0.0	0.0	6.0	0.7	1.0	0.0	T	0.0	0.0	7.7
1988-89	0.0	0.0	0.0	0.0	0.0	0.3	T	5.6	T	0.0	0.0	0.0	5.9
1989-90	0.0	0.0	0.0	0.0	T	0.0	T	8.8	0.0	0.0	0.0	0.0	8.8
1990-91	0.0	0.0	0.0	0.0	0.0	3.6	T	0.0	T	T	0.0	0.0	3.6
1991-92	0.0	0.0	0.0	0.0	0.0	0.0	0.0	0.0	0.0	T	0.0	0.0	T
1992-93	0.0	0.0	0.0	0.0	0.0	3.3	6.7	8.2	0.0	0.0	0.0	0.0	18.2
1993-94	0.0	0.0	0.0	0.0	T	0.0	0.0	T	0.3	0.0	0.0	0.0	0.3
1994-95	0.0	0.0	0.0	0.0	T	T	T	3.0	T	T	0.0	T	3.0
1995-96	0.0	0.0	0.0	0.0	0.0		T	6.0					
1996-97													
1997-98													
1998-99													
1999-00													
2000-01													
2001-02													
2002-03													
2003-04													
2004-05													
2005-06													
2006-07													
2007-08													
2008-09													
POR= 56 YRS	0.0	0.0	T	T	0.2	1.2	3.2	0.9	0.5	T	T	T	6.0

WBAN : 24221

REFERENCE NOTES :

<p>PAGE 1: THE TEMPERATURE GRAPH SHOWS NORMAL MAXIMUM AND NORMAL MINIMUM DAILY TEMPERATURES (SOLID CURVES) AND THE ACTUAL DAILY HIGH AND LOW TEMPERATURES (VERTICAL BARS).</p> <p>PAGE 2 AND 3: H/C INDICATES HEATING AND COOLING DEGREE DAYS. RH INDICATES RELATIVE HUMIDITY W/O INDICATES WEATHER AND OBSTRUCTIONS S INDICATES SUNSHINE. PR INDICATES PRESSURE. CLOUDINESS ON PAGE 3 IS THE SUM OF THE CEILOMETER AND SATELLITE DATA NOT TO EXCEED EIGHT EIGHTHS(OKTAS).</p> <p>GENERAL: T INDICATES TRACE PRECIPITATION, AN AMOUNT GREATER THAN ZERO BUT LESS THAN THE LOWEST REPORTABLE VALUE. + INDICATES THE VALUE ALSO OCCURS ON EARLIER DATES. BLANK ENTRIES DENOTE MISSING OR UNREPORTED DATA. NORMALS ARE 30-YEAR AVERAGES (1971 - 2000). ASOS INDICATES AUTOMATED SURFACE OBSERVING SYSTEM. PM INDICATES THE LAST DAY OF THE PREVIOUS MONTH. POR (PERIOD OF RECORD) BEGINS WITH THE JANUARY DATA MONTH AND IS THE NUMBER OF YEARS USED TO COMPUTE THE MEAN. INDIVIDUAL MONTHS WITHIN THE POR MAY BE MISSING. WHEN THE POR FOR A NORMAL IS LESS THAN 30 YEARS, THE NORMAL IS PROVISIONAL AND IS BASED ON THE NUMBER OF YEARS INDICATED. 0.* OR * INDICATES THE VALUE OR MEAN-DAYS-WITH IS BETWEEN 0.00 AND 0.05. CLOUDINESS FOR ASOS STATIONS DIFFERS FROM THE NON-ASOS OBSERVATION TAKEN BY A HUMAN OBSERVER. ASOS STATION CLOUDINESS IS BASED ON TIME-AVERAGED CEILOMETER DATA FOR CLOUDS AT OR BELOW 12,000 FEET AND ON SATELLITE DATA FOR CLOUDS ABOVE 12,000 FEET. THE NUMBER OF DAYS WITH CLEAR, PARTLY CLOUDY, AND CLOUDY CONDITIONS FOR ASOS STATIONS IS THE SUM OF THE CEILOMETER AND SATELLITE DATA FOR THE SUNRISE TO SUNSET PERIOD. CLEAR INDICATES 0 - 2 OKTAS, PARTLY CLOUDY INDICATES 3 - 6 OKTAS, AND CLOUDY INDICATES 7 OR 8 OKTAS. WHEN AT LEAST ONE OF THE ELEMENTS (CEILOMETER OR SATELLITE) IS MISSING, THE DAILY CLOUDINESS IS NOT COMPUTED.</p>	<p>GENERAL CONTINUED: WIND DIRECTION IS RECORDED IN TENS OF DEGREES (2 DIGITS) CLOCKWISE FROM TRUE NORTH. "00" INDICATES CALM. "36" INDICATES TRUE NORTH. RESULTANT WIND IS THE VECTOR AVERAGE OF THE SPEED AND DIRECTION. AVERAGE TEMPERATURE IS THE SUM OF THE MEAN DAILY MAXIMUM AND MINIMUM TEMPERATURE DIVIDED BY 2. SNOWFALL DATA COMPRISE ALL FORMS OF FROZEN PRECIPITATION, INCLUDING HAIL. A HEATING (COOLING) DEGREE DAY IS THE DIFFERENCE BETWEEN THE AVERAGE DAILY TEMPERATURE AND 65 F. DRY BULB IS THE TEMPERATURE OF THE AMBIENT AIR. DEW POINT IS THE TEMPERATURE TO WHICH THE AIR MUST BE COOLED TO ACHIEVE 100 PERCENT RELATIVE HUMIDITY. WET BULB IS THE TEMPERATURE THE AIR WOULD HAVE IF THE MOISTURE CONTENT WAS INCREASED TO 100 PERCENT RELATIVE HUMIDITY. ON JULY 1, 1996, THE NATIONAL WEATHER SERVICE BEGAN USING THE "METAR" OBSERVATION CODE THAT WAS ALREADY EMPLOYED BY MOST OTHER NATIONS OF THE WORLD. THE MOST NOTICEABLE DIFFERENCE IN THIS ANNUAL PUBLICATION WILL BE THE CHANGE IN UNITS FROM TENTHS TO EIGHTS(OKTAS) FOR REPORTING THE AMOUNT OF SKY COVER. STATION HISTORY STOPPED WITH THE 2009 ANNUAL. IF YOU NEED HISTORY GO TO "MULTI-NETWORK METADATA SYSTEM", URL IS: https://mi3.ncdc.noaa.gov/mi3qry/login.cfm</p> <p>NOTE: The "Period of Record:(POR) for all "averages" is based on the "Summary of the Day First Order Station" and "Cooperative Summary of the Day" archives.</p>
--	---

2009 EUGENE OREGON (KEUG)

Eugene is located at the upper or southern end of the fertile Willamette Valley. Mahlon Sweet Field, location of the National Weather Service Office, is 9 miles northwest of the city center. The Cascade Mountains to the east and the Coast Range to the west bound the valley, and low hills to the south nearly close it, but northward the level valley floor broadens rapidly. Hills of the rolling, wooded Coast Range begin about 5 miles west of the airport and rise to elevations of 1,500 to 2,500 feet midway between Eugene and the Pacific Ocean lying 50 miles to the west. About 10 miles east, the Coburg Hills, rising to an elevation of 2,500 feet, obscure the snow-covered peaks of the Cascade Range, which reach elevations of 10,000 feet about 75 miles away. Abundant moisture and moderate temperatures result in rapid growth of evergreen timber and lumbering is a major industry.

The Willamette River passes about 5 miles east of the airport. The Fern Ridge flood control reservoir, with a normal area of 9,360 acres, begins about 2 miles southwest. These two water areas are the main sources of local fog, but numerous small creeks and low places, which fill with water in the wet season, also produce considerable fog. The Coast Range acts as a barrier to coastal fog, but active storms cross these ridges with little hindrance. The Cascade Range blocks westward passage of all but the strongest continental air masses, but when air does flow into the valley from the east, dry, hot weather develops in summer causing an extreme fire hazard. In winter this situation causes clear, sunny days and cool, frosty nights.

The centers of low barometric pressure, with which rain is associated, generally pass inland north of Eugene and as a result southwest winds with speeds of 10 to 20 mph usually accompany rainfall. Heavier storms bring winds of 30 to 40 mph and occasional southwest winds exceeding 50 mph are experienced. Fair weather in both summer and winter is most often accompanied by calm nights and daytime northerly winds increasing to speeds of 5 to 15 mph in the afternoon.

The first fall rains usually arrive during the second or third week of September, after which rain gradually increases until about the first of January and then slowly decreases to the latter part of June. July and August are normally very dry, occasionally passing without rainfall. When snow occurs, it frequently melts on contact with the ground or within a few hours, but occasionally an accumulation of a few inches will persist as a ground covering for several days. Snowfall for a winter season exceeds 5 inches in about one-third of the years.

Temperatures are so largely controlled by maritime air from the Pacific that long periods of extremely hot or severely cold weather never occur. Temperatures of 95 degrees or higher have occurred only in the months of June, July, August, and September, and average three days a year.

Based on the 1951-1980 period, the average first occurrence of 32 degrees Fahrenheit in the fall is October 25 and the average last occurrence in the spring is April 24.

Non-Subscription Request:

NCDC Customer Services;

Phone: 828-271-4800

Fax: 828-271-4876

Email: ncdc.orders@noaa.gov

OFFICIAL BUSINESS

PENALTY FOR PRIVATE USE \$300

CHANGE SERVICE REQUESTED

FIRST CLASS
POSTAGE & FEES PAID
United States Department of Commerce
NOAA Permit No. G - 19

INQUIRES/COMMENTS CALL: Toll Free (866) 742-3322

Visit our Web Site for other weather data: www.ncdc.noa.gov

For Hard Copy Subscription:

Price and ordering information: NCDC Subscribing Service Center, 310 State Route 956, Building 300, Rocket Center, WV 26726.