

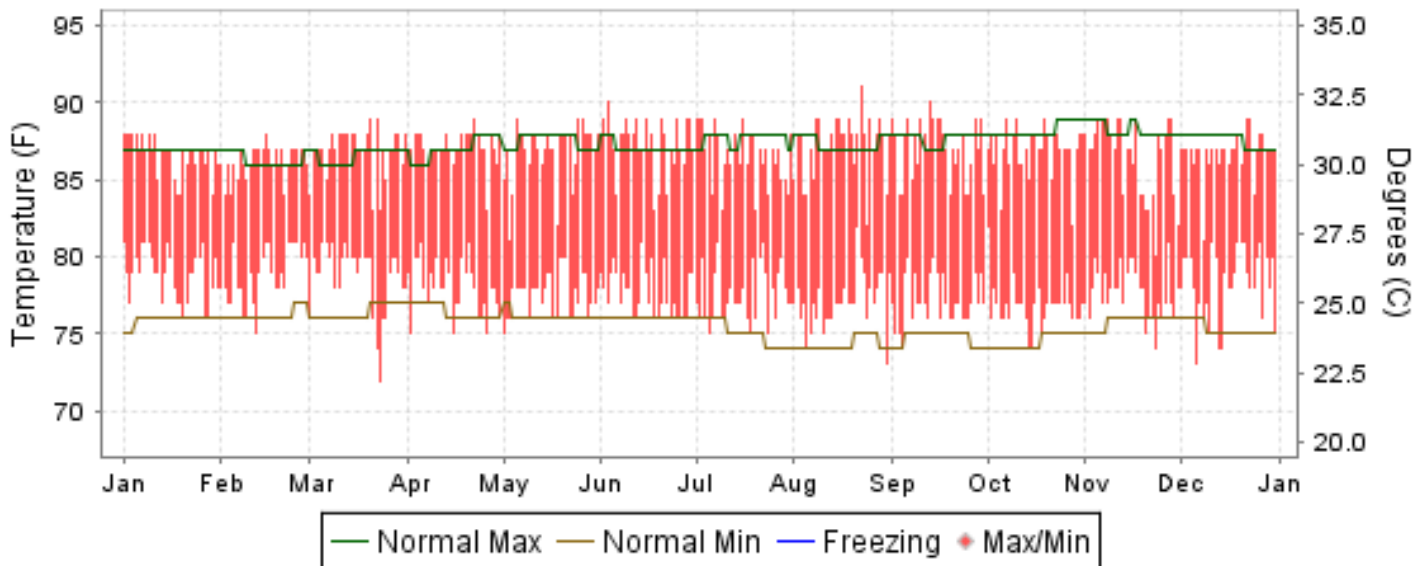


2009 LOCAL CLIMATOLOGICAL DATA ANNUAL SUMMARY WITH COMPARATIVE DATA

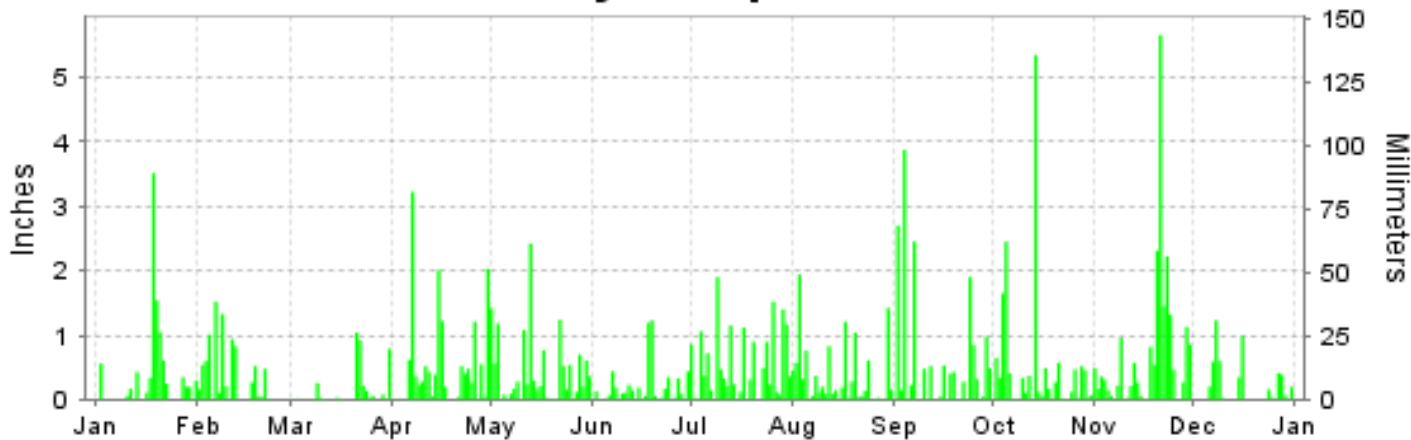
ISSN 0198-439X

WENO ISLAND, PACIFIC (PTKK)

Daily Max/Min Temperature



Daily Precipitation



Daily Station Pressure



I CERTIFY THAT THIS IS AN OFFICIAL PUBLICATION OF THE NATIONAL OCEANIC AND ATMOSPHERIC ADMINISTRATION, AND IS COMPILED FROM RECORDS ON FILE AT THE NATIONAL CLIMATIC DATA CENTER.

NATIONAL
OCEANIC AND
ATMOSPHERIC ADMINISTRATION

NATIONAL
ENVIRONMENTAL SATELLITE, DATA
AND INFORMATION SERVICE

NATIONAL
CLIMATIC DATA CENTER
ASHEVILLE, NORTH CAROLINA

Thomas R. Karl
DIRECTOR
NATIONAL CLIMATIC DATA CENTER

METEOROLOGICAL DATA FOR 2009

WENO ISLAND (PTKK)

LATITUDE: 7 ° 27'N LONGITUDE: 151 ° 50'W ELEVATION (FT): GRND: 5 BARO: 8 TIME ZONE: 165 E MER (UTC 11) WBAN: 40505

ELEMENT		JAN	FEB	MAR	APR	MAY	JUN	JUL	AUG	SEP	OCT	NOV	DEC	YEAR	
TEMPERATURE °F	MEAN DAILY MAXIMUM	86.7	86.3	87.0	87.2	86.9	87.4	86.6	87.3	87.1	87.0	86.6	86.8	86.9	
	HIGHEST DAILY MAXIMUM	88	88	89	89	89	90	89	91	90	89	89	89	91	
	DATE OF OCCURRENCE	11+	15	22+	22	26+	03	16+	22	13	19+	28+	23+	AUG 22	
	MEAN DAILY MINIMUM	78.9	78.9	78.7	78.0	77.6	77.7	77.5	77.1	77.2	76.8	77.7	78.2	77.9	
	LOWEST DAILY MINIMUM	76	75	72	75	75	76	75	73	74	74	74	73	72	
	DATE OF OCCURRENCE	28+	12	23	26+	01	28+	24+	30	04	15+	23	06	MAR 23	
	AVERAGE DRY BULB	82.8	82.6	82.9	82.6	82.3	82.6	82.1	82.2	82.2	81.9	82.2	82.5	82.4	
	MEAN WET BULB	76.6	76.6	75.9	77.4	77.7	77.8	77.9	77.9	77.8	77.7	77.9	77.3	77.4	
	MEAN DEW POINT	74.1	74.1	72.9	75.3	75.8	75.8	76.3	76.2	76.1	75.8	76.0	74.9	75.3	
	NUMBER OF DAYS WITH:														
	MAXIMUM >= 90°	0	0	0	0	0	1	0	1	1	0	0	0	0	3
	MAXIMUM <= 32°	0	13	6	0	0	0	0	0	0	0	0	0	0	19
	MINIMUM <= 32°	0	0	0	0	0	0	0	0	0	0	0	0	0	0
MINIMUM <= 0°	0	0	0	0	0	0	0	0	0	0	0	0	0	0	
H/C	HEATING DEGREE DAYS	0	0	0	0	0	0	0	0	0	0	0	0	0	
	COOLING DEGREE DAYS	560	498	561	536	540	535	539	541	522	532	520	551	6435	
RH	MEAN (PERCENT)	75	76	73	79	82	80	84	82	83	83	82	78	80	
	HOUR 05 LST	77	78	77	82	85	85	87	85	87	88	85	82	83	
	HOUR 11 LST	72	72	68	73	78	75	79	78	77	76	78	72	75	
	HOUR 17 LST	76	77	73	80	82	79	83	80	82	81	81	78	79	
	HOUR 23 LST	77	78	77	81	85	83	87	85	86	87	85	81	83	
S	PERCENT POSSIBLE SUNSHINE														
W/O	NUMBER OF DAYS WITH:														
	HEAVY FOG(VISBY <= 1/4 MI)	0	0	0	0	0	0	0	0	0	0	0	0	0	
	THUNDERSTORMS	2	0	1	3	4	1	2	3	3	1	2	0	22	
CLOUDNESS	SUNRISE-SUNSET: (OKTAS)														
	CEILOMETER (<= 12,000 FT.)														
	SATELLITE (> 12,000 FT.)														
	MIDNIGHT-MIDNIGHT: (OKTAS)														
	CEILOMETER (<= 12,000 FT.)														
SATELLITE (> 12,000 FT.)															
NUMBER OF DAYS WITH:															
CLEAR															
PARTLY CLOUDY															
CLOUDY															
PR	MEAN STATION PRESS. (IN.)	29.79	29.77	29.79	29.79	29.79	29.81	29.76	29.78	29.77	29.78	29.75	29.78	29.78	
	MEAN SEA-LEVEL PRESS. (IN.)	29.80	29.78	29.80	29.80	29.80	29.82	29.77	29.79	29.78	29.79	29.75	29.78	29.79	
WINDS	RESULTANT SPEED (MPH)	8.2	10.1	8.5	7.4	4.2	4.2	1.4	3.4		1.5	2.4	4.1		
	RES. DIR. (TENS OF DEGS.)	06	05	05	05	06	05	25	26		24	05	04		
	MEAN SPEED (MPH)	10.0	11.4	10.1	9.4	7.1	6.9	7.0	7.1	6.8	6.6	7.5	7.5	8.1	
	PREVAIL.DIR.(TENS OF DEGS.)	05	04	04	04	04	04	22	22	21	22	04	04	04	
	MAXIMUM 2-MINUTE WIND														
	SPEED (MPH)	21	22	21	21	17	17	23	21	21	25	28	25	28	
	DIR. (TENS OF DEGS.)	04	30	30	04	04	09	22	33	28	29	18	30	18	
	DATE OF OCCURRENCE	26	24	06	08	17	18	30	02	30	02	24	29	NOV 24	
	MAXIMUM 3-SECOND WIND:														
	SPEED (MPH)	46	56	38	40	36	35	37	30	39	37	43	39	56	
DIR. (TENS OF DEGS.)	05	05	07	14	05	05	23	32	23	27	05	09	05		
DATE OF OCCURRENCE	27	23	09	15	17	13	30	30	29	02	12	27	FEB 23		
PRECIPITATION	WATER EQUIVALENT:														
	TOTAL (IN.)	9.69	8.62	3.67	15.11	13.48	5.63	16.24	11.18	16.72	15.11	20.93	5.26	141.64	
	GREATEST 24-HOUR (IN.)	3.51	1.52	1.04	3.22	2.42	1.23	1.90	1.94	3.87	5.34	5.65	1.23	5.65	
	DATE OF OCCURRENCE	18	06	21	07	13	19	09	03	04	14	21	08	NOV 21	
	NUMBER OF DAYS WITH:														
	PRECIPITATION 0.01	16	16	16	23	27	22	27	26	21	26	26	13	259	
PRECIPITATION 0.10	14	13	6	18	21	14	23	18	16	18	21	10	192		
PRECIPITATION 1.00	3	3	1	5	5	2	7	4	4	3	6	1	44		
SNOWFALL	SNOW,ICE PELLETS,HAIL														
	TOTAL (IN.)	0.0	0.0	0.0	0.0	0.0	0.0	0.0	0.0	0.0	0.0	0.0	0.0	0.0	
	GREATEST 24-HOUR (IN.)	0.0	0.0	0.0	0.0	0.0	0.0	0.0	0.0	0.0	0.0	0.0	0.0	0.0	
	DATE OF OCCURRENCE														
	MAXIMUM SNOW DEPTH (IN.)	0	0	0	0	0	0	0	0	0	0	0	0	0	
	DATE OF OCCURRENCE														
NUMBER OF DAYS WITH:															
SNOWFALL >= 1.0	0	0	0	0	0	0	0	0	0	0	0	0	0		

NORMALS, MEANS, AND EXTREMES WENO ISLAND (PTKK)

LATITUDE:
7 ° 27'N

LONGITUDE:
151 ° 50'W

ELEVATION (FT):
GRND: 5 BARO: 8

TIME ZONE:
165 E MER (UTC 11)

WBAN: 40505

	ELEMENT	POR	JAN	FEB	MAR	APR	MAY	JUN	JUL	AUG	SEP	OCT	NOV	DEC	YEAR	
TEMPERATURE °F	NORMAL DAILY MAXIMUM	30	87.0	86.4	86.7	87.1	87.6	87.2	87.7	87.4	87.8	88.3	88.3	87.7	87.4	
	MEAN DAILY MAXIMUM	58	85.9	84.5	84.9	86.7	87.1	87.1	87.1	87.1	87.2	87.3	87.1	86.4	86.5	
	HIGHEST DAILY MAXIMUM	59	92	91	94	93	94	93	92	96	93	92	91	91	96	
	YEAR OF OCCURRENCE		1997	2000	1946	2000	1946	1957	1984	2004	2006	1981	2000	1999	AUG 2004	
	MEAN OF EXTREME MAXS.	58	88.1	87.9	88.5	89.1	89.6	89.8	89.8	90.0	90.0	89.9	89.6	88.9	89.3	
	NORMAL DAILY MINIMUM	30	75.9	76.2	76.4	76.4	76.1	76.0	75.0	74.3	74.7	74.5	75.8	75.3	75.6	
	MEAN DAILY MINIMUM	58	76.7	75.5	75.6	76.9	76.6	76.2	75.5	75.4	75.5	75.6	76.2	76.8	76.0	
	LOWEST DAILY MINIMUM	59	68	67	68	68	67	68	67	69	67	64	66	66	64	
	YEAR OF OCCURRENCE		1998	1997	1999	1999	1999	1999	1999	1999	1999	1999	1998	1998	1998	OCT 1999
	MEAN OF EXTREME MINS.	58	72.8	73.1	72.9	73.1	73.1	73.0	72.5	72.3	72.4	72.5	72.8	73.2	72.8	
	NORMAL DRY BULB	30	81.5	81.3	81.6	81.8	81.9	81.6	81.4	80.9	81.3	81.4	82.1	81.5	81.5	
	MEAN DRY BULB	58	81.3	80.0	80.3	81.8	81.9	81.7	81.3	81.2	81.4	81.5	81.7	81.6	81.3	
	MEAN WET BULB	26	76.6	76.2	76.6	77.4	77.8	77.6	77.5	77.4	77.5	77.7	77.7	77.3	77.3	
	MEAN DEW POINT	26	75.1	74.6	75.1	76.0	76.5	76.4	76.2	76.2	76.2	76.4	76.5	76.5	76.0	
	NORMAL NO. DAYS WITH: MAXIMUM >= 90	30	1.1	1.1	1.4	3.8	7.2	4.7	4.6	4.6	4.1	6.1	3.7	1.8	44.2	
	MAXIMUM <= 32	30	0.0	0.0	0.0	0.0	0.0	0.0	0.0	0.0	0.0	0.0	0.0	0.0	0.0	
	MINIMUM <= 32	30	0.0	0.0	0.0	0.0	0.0	0.0	0.0	0.0	0.0	0.0	0.0	0.0	0.0	
MINIMUM <= 0	30	0.0	0.0	0.0	0.0	0.0	0.0	0.0	0.0	0.0	0.0	0.0	0.0	0.0		
H/C	NORMAL HEATING DEG. DAYS	30	0	0	0	0	0	0	0	0	0	0	0	0	0	
	NORMAL COOLING DEG. DAYS	30	510	456	513	501	522	497	506	492	488	508	511	511	6015	
RH	NORMAL (PERCENT)	30														
	hour 05 LST	30														
	hour 11 LST	30	75	74	74	76	77	77	77	77	77	76	76	77	76	
	hour 17 LST	30	78	76	77	78	78	79	79	78	78	79	79	79	78	
	hour 23 LST	30	81	80	81	82	83	85	86	85	85	85	85	82	83	
S	PERCENT POSSIBLE SUNSHINE	46	50	55	55	49	46	43	47	47	45	42	43	43	47	
W/O	MEAN NO. DAYS WITH: HEAVY FOG(VISBY <= 1/4 MI)	46	0.0	0.0	0.0	0.0	0.0	0.0	0.0	0.0	0.0	0.0	0.0	0.0	0.0	
	THUNDERSTORMS	58	0.9	0.3	1.0	1.3	1.7	1.8	1.8	1.3	1.9	2.0	2.3	1.8	18.1	
CLOUDNESS	MEAN: SUNRISE-SUNSET (OKTAS)	54	7.4	7.4	7.4	7.4	7.3	7.4	7.3	7.3	7.4	7.3	7.3	7.5	7.4	
	MIDNIGHT-MIDNIGHT (OKTAS)	27	7.4	7.4	7.4	7.4	7.5	7.4	7.5	7.3	7.4	7.4	7.3	7.5	7.4	
	MEAN NO. DAYS WITH: CLEAR	54	0.2	0.2	0.3	0.2	0.3	0.2	0.2	0.1	0.3	0.3	0.1	0.1	2.5	
	PARTLY CLOUDY	54	3.5	3.2	3.5	3.5	3.7	3.6	4.0	4.2	4.1	4.1	3.8	3.2	44.4	
	CLOUDY	54	27.3	24.9	27.3	26.3	26.9	26.4	26.3	26.3	25.2	26.4	25.5	27.4	316.2	
PR	MEAN STATION PRESSURE(IN)	26	29.79	29.80	29.80	29.80	29.80	29.80	29.80	29.80	29.80	29.79	29.77	29.77	29.79	
	MEAN SEA-LEVEL PRES. (IN)	26	29.80	29.81	29.81	29.81	29.81	29.81	29.81	29.81	29.81	29.80	29.78	29.78	29.80	
WINDS	MEAN SPEED (MPH)	26	11.4	11.6	11.2	9.9	8.7	7.8	7.3	8.1	8.0	7.7	8.2	10.0	9.2	
	PREVAIL.DIR(TENS OF DEGS)	22	06	06	06	06	06	06	06	25	25	06	06	06	06	
	MAXIMUM 2-MINUTE: SPEED (MPH)	20	30	28	33	29	35	35	33	39	32	35	35	46	46	
	DIR. (TENS OF DEGS)		03	05	33	00	24	02	24	23	02	02	02	24	24	
	YEAR OF OCCURRENCE		1992	2001	1997	1996	2003	2004	2002	2002	1991	1993	1992	2002	DEC 2002	
	MAXIMUM 3-SECOND SPEED (MPH)	26	58	56	54	55	59	58	54	53	48	61	94	68	94	
	DIR. (TENS OF DEGS)		05	05	05	05	36	27	09	27	05	14	18	23	18	
YEAR OF OCCURRENCE		2008	2009	1991	1990	2003	2004	2003	2001	2001	2000	1987	2002	NOV 1987		
PRECIPITATION	NORMAL (IN)	30	8.58	8.77	8.15	10.94	11.29	12.82	12.45	15.09	13.12	10.69	11.09	10.98	133.97	
	MAXIMUM MONTHLY (IN)	60	20.93	15.95	24.02	30.64	28.39	21.72	34.34	25.96	23.73	24.71	26.12	34.89	34.89	
	YEAR OF OCCURRENCE		2005	1991	1967	2004	1976	1950	2002	1979	2003	1979	1962	1959	DEC 1959	
	MINIMUM MONTHLY (IN)	60	0.96	0.56	0.78	1.13	3.80	5.63	2.65	3.27	5.24	4.17	1.88	2.88	0.56	
	YEAR OF OCCURRENCE		1959	1983	1998	1998	1983	2009	1984	2008	1989	1972	1982	1997	FEB 1983	
	MAXIMUM IN 24 HOURS (IN)	60	6.78	7.89	8.21	9.08	11.13	7.61	20.04	5.58	6.46	6.55	10.41	14.92	20.04	
	YEAR OF OCCURRENCE		1985	1993	1972	2004	1976	1972	2002	2006	2003	1968	1962	1959	JUL 2002	
	NORMAL NO. DAYS WITH: PRECIPITATION >= 0.01	30	19.2	17.4	19.7	20.2	23.3	24.4	25.8	23.9	20.9	22.3	22.1	22.4	261.6	
PRECIPITATION >= 1.00	30	2.6	2.3	2.9	3.9	3.4	3.6	3.3	5.1	4.6	3.1	2.6	3.3	40.7		
SNOWFALL	NORMAL (IN)															
	MAXIMUM MONTHLY (IN)	13	0.0	0.0	0.0	0.0	0.0	0.0	0.0	0.0	0.0	0.0	0.0	0.0	0.0	
	YEAR OF OCCURRENCE															
	MAXIMUM IN 24 HOURS (IN)	60	0.0	0.0	0.0	0.0	0.0	0.0	0.0	0.0	0.0	0.0	0.0	0.0	0.0	
	YEAR OF OCCURRENCE															
MAXIMUM SNOW DEPTH (IN)	57	0	0	0	0	0	0	0	0	0	0	0	0	0		
YEAR OF OCCURRENCE																
NORMAL NO. DAYS WITH: SNOWFALL >= 1.0	30	0.0	0.0	0.0	0.0	0.0	0.0	0.0	0.0	0.0	0.0	0.0	0.0	0.0		

PRECIPITATION (inches) 2009 WENO ISLAND (PTKK)

YEAR	JAN	FEB	MAR	APR	MAY	JUN	JUL	AUG	SEP	OCT	NOV	DEC	ANNUAL
1980	13.91	5.96	8.14	6.55	18.26	12.88	17.26	12.78	8.50	18.91	2.98	18.44	144.57
1981	19.19	4.41	7.24	12.54	6.04	14.46	8.44	10.76	11.35	14.48	9.62	18.20	136.73
1982	7.04	5.92	11.21	8.67	14.68	11.99	11.55	10.70	9.38	6.76	1.88	4.61	104.39
1983	5.16	0.56	1.95	3.28	3.80	9.28	23.09	12.84	9.75	15.32	12.08	15.17	112.28
1984	12.92	10.10	8.27	7.03	11.06	7.47	2.65	14.88	5.35	18.06	14.58	6.84	119.21
1985	16.99	7.85	3.64	16.39	11.67	10.21	12.24	9.73	15.81	7.47	8.70	12.91	133.61
1986	14.40	14.82	18.35	9.45	10.86	8.81	14.92	8.31	10.74	5.60	12.67	11.45	140.38
1987	9.51	0.58	7.69	19.80	5.89	13.34	14.68	15.70	5.36	7.12	14.14	10.89	124.70
1988	3.46	6.65	2.94	3.49	16.18	8.45	11.41	10.44	11.21	21.17	8.84	11.86	116.10
1989	9.32	3.85	7.13	22.51	13.47	10.50	18.20	14.43	5.24	15.72	8.94	11.27	140.58
1990	12.16	2.02	10.72	12.65	11.54	11.22	10.57	24.39	10.89	9.25	12.59	3.12	131.12
1991	11.42	15.95	15.67	18.92	16.81	11.25	9.91	9.60	18.57	6.14	10.21	4.45	148.90
1992	4.80	2.70	1.65	5.09	7.52	12.60	10.72	18.96	12.07	13.24	7.93	7.72	105.00
1993	14.64	10.36	9.43	16.64	15.49	17.29	10.80	16.36	14.50	12.92	9.04	21.00	168.47
1994	10.14	11.40	9.78	10.55	21.95	11.68	14.68	15.27	10.83	4.65	4.28	11.23	136.44
1995	6.08	4.65	5.71	10.43	9.61	11.18	11.54	13.07	19.87	13.83	9.87	14.81	130.65
1996	12.29	9.10	11.29	15.69	11.78	11.80	13.10	13.92	8.90	6.24	23.58	6.22	143.91
1997	11.53	11.26	4.88	5.47	9.04	11.65	15.46	15.06	14.03	8.32	2.53	2.88	112.11
1998	1.25	1.75	0.78	1.13	9.96	10.07	5.43	12.89	6.49	12.62	15.02	13.83	91.22
1999	13.79	4.73	18.10	15.03	8.90	11.06	13.55	4.35	13.76	12.26	13.00	19.58	148.11
2000	7.71	12.54	14.73	12.11	9.97	12.11	10.13	22.73	13.50	15.89	11.02	17.64	160.08
2001	12.61	9.60	13.60	6.31	9.71	9.80	8.57	12.66	10.56	11.66	15.11	7.92	128.11
2002	7.50	15.93	9.75	18.74	12.53	20.54	34.34	8.75	17.12	7.76	7.85	10.24	171.05
2003	10.06	4.72	7.95	12.47	13.93	13.30	21.65	12.13	23.73	9.90	15.28	13.30	158.42
2004	4.43	10.76	8.45	30.64	14.25	20.68	12.50	18.70	9.05	10.83	7.32	6.96	154.57
2005	20.93	1.91	12.78	14.89	9.34	14.68	11.72	10.87	21.85	14.89	5.96	17.97	157.79
2006	5.76	5.27	7.81	6.12	17.05	9.72	13.43	20.42	22.05	9.00	14.06	12.40	143.09
2007	3.92	9.01	13.26	8.79	10.98	15.92	10.97	8.84	9.67	8.68	12.76	13.84	126.64
2008	13.34	8.32	8.36	13.96	14.55	12.39	7.46	3.27	13.85	11.37	13.86	7.70	128.43
2009	9.69	8.62	3.67	15.11	13.48	5.63	16.24	11.18	16.72	15.11	20.93	5.26	141.64
POR= 58 YRS	9.09	6.92	8.87	12.40	13.74	12.22	13.72	13.60	13.04	13.00	11.62	11.85	140.07

WBAN : 40505

AVERAGE TEMPERATURE (°F) 2009 WENO ISLAND (PTKK)

YEAR	JAN	FEB	MAR	APR	MAY	JUN	JUL	AUG	SEP	OCT	NOV	DEC	ANNUAL
1980	81.2	81.5	81.8	82.5	82.0	81.8	80.8	81.1	81.5	80.4	81.3	81.2	81.4
1981	81.0	82.0	82.2	82.6	83.0	82.0	82.7	82.5	82.4	82.3	82.4	82.4	82.3
1982	82.7	82.2	81.8	82.7	82.4	82.3	82.1	81.9	82.2	82.0	82.6	82.1	82.3
1983	80.8	81.5	81.8	82.8	84.0	83.4	81.8	82.5	82.6	82.5	82.7	82.4	82.4
1984	81.4	81.7	82.5	83.3	83.6	81.5	83.8	81.6	82.6	81.9	82.7	83.1	82.5
1985	81.5	82.6	82.9	82.1	82.8	82.7	81.7	81.9	81.6	82.4	82.9	82.7	82.3
1986	81.9	81.0	81.7	82.9	83.0	82.6	82.0	82.6	81.6	82.1	82.0	81.8	82.1
1987	81.8	82.9	81.8	81.8	83.9	82.7	81.2	81.3	82.6	83.0	82.8	82.7	82.4
1988	82.3	81.9	83.9	83.7	82.5	82.8	82.7	82.8	82.5	82.1	83.0	81.9	82.7
1989	82.7	82.9	82.1	81.5	82.0	81.8	81.5	81.5	82.2	82.0	82.1	81.9	82.0
1990	82.0	82.2	81.9	82.3	82.3	82.1	81.4	80.8	81.9	82.0	82.1	82.2	81.9
1991	81.4	80.8	81.6	82.2	82.4	82.3	81.9	82.0	81.0	82.0	81.7	82.2	81.8
1992	81.3	81.1	82.2	82.8	83.2	82.6	82.3	81.4	82.0	82.4	81.8	81.2	82.0
1993	80.9	81.4	81.1	81.7	82.2	81.3	82.3	81.1	81.2	81.5	82.1	81.3	81.5
1994	81.6	81.0	82.2	82.4	81.7	82.2	80.8	81.2	81.6	81.8	82.1	81.3	81.7
1995	81.4	81.2	82.1	81.3	82.4	81.7	81.1	81.5	82.1	82.0	82.6	82.1	81.8
1996	81.3	81.7	81.7	81.5	81.8	82.2	82.2	81.6	80.8	81.3	80.7	81.6	81.5
1997	81.3	80.2	80.2	81.5	81.7	79.9	80.4	79.4	79.7	80.5	81.3	81.5	80.6
1998	81.0	80.5	81.4	82.9	82.1	81.4	81.1	80.8	80.8	80.3	79.9	79.8	81.0
1999	79.4	80.1	79.2	79.2	80.4	79.9	79.2	79.8	78.3	80.1	81.8	81.2	79.9
2000	82.3	82.3	82.4	82.9	83.6	82.7	81.9	81.7	82.2	81.8	82.2	81.7	82.3
2001	81.1	80.8	81.5	82.1	82.0	81.7	81.4	80.7	81.3	81.3	81.0	81.2	81.3
2002	80.6	80.3	80.8	80.4	81.0	80.7	80.7	80.7	81.0	81.6	81.7	80.9	80.9
2003	80.6	80.6	81.1	81.0	81.1	80.6	81.0	81.5	81.0	81.9	81.4	81.2	81.1
2004	81.1	81.3	81.8	81.6	81.9	81.6	82.1	81.7	82.0	82.2	82.4	82.4	81.8
2005	81.2	81.7	81.6	82.2	82.3	82.0	82.5	81.9	81.8	82.5	82.7	82.4	82.1
2006	82.5	82.4	81.9	82.5	81.5	82.6	81.4	81.8	82.1	82.2	82.2	82.2	82.1
2007	82.2	81.4	82.2	82.5	82.1	82.6	82.2	81.8	82.3	82.1	82.3	82.5	82.2
2008	81.8	82.3	81.8	81.5	81.8	82.2	82.1	82.4	81.8	82.0	82.1	82.7	82.0
2009	82.8	82.6	82.9	82.6	82.3	82.6	82.1	82.2	82.2	81.9	82.2	82.5	82.4
POR= 58 YRS	81.3	80.0	80.3	81.8	81.9	81.7	81.3	81.2	81.4	81.5	81.7	81.6	81.3

HEATING DEGREE DAYS (base 65°F) 2009 WENO ISLAND (PTKK)

YEAR	JUL	AUG	SEP	OCT	NOV	DEC	JAN	FEB	MAR	APR	MAY	JUN	TOTAL
1983-84	0	0	0	0	0	0	0	0	0	0	0	0	0
1984-85	0	0	0	0	0	0	0	0	0	0	0	0	0
1985-86	0	0	0	0	0	0	0	0	0	0	0	0	0
1986-87	0	0	0	0	0	0	0	0	0	0	0	0	0
1987-88	0	0	0	0	0	0	0	0	0	0	0	0	0
1988-89	0	0	0	0	0	0	0	0	0	0	0	0	0
1989-90	0	0	0	0	0	0	0	0	0	0	0	0	0
1990-91	0	0	0	0	0	0	0	0	0	0	0	0	0
1991-92	0	0	0	0	0	0	0	0	0	0	0	0	0
1992-93	0	0	0	0	0	0	0	0	0	0	0	0	0
1993-94	0	0	0	0	0	0	0	0	0	0	0	0	0
1994-95	0	0	0	0	0	0	0	0	0	0	0	0	0
1995-96	0	0	0	0	0	0	0	0	0	0	0	0	0
1996-97	0	0	0	0	0	0	0	0	0	0	0	0	0
1997-98	0	0	0	0	0	0	0	0	0	0	0	0	0
1998-99	0	0	0	0	0	0	0	0	0	0	0	0	0
1999-00	0	0	0	0	0	0	0	0	0	0	0	0	0
2000-01	0	0	0	0	0	0	0	0	0	0	0	0	0
2001-02	0	0	0	0	0	0	0	0	0	0	0	0	0
2002-03	0	0	0	0	0	0	0	0	0	0	0	0	0
2003-04	0	0	0	0	0	0	0	0	0	0	0	0	0
2004-05	0	0	0	0	0	0	0	0	0	0	0	0	0
2005-06	0	0	0	0	0	0	0	0	0	0	0	0	0
2006-07	0	0	0	0	0	0	0	0	0	0	0	0	0
2007-08	0	0	0	0	0	0	0	0	0	0	0	0	0
2008-09	0	0	0	0	0	0	0	0	0	0	0	0	0
2009-	0	0	0	0	0	0	0	0	0	0	0	0	0

WBAN : 40505

COOLING DEGREE DAYS (base 65°F) 2009 WENO ISLAND (PTKK)

YEAR	JAN	FEB	MAR	APR	MAY	JUN	JUL	AUG	SEP	OCT	NOV	DEC	TOTAL
1980	507	483	527	531	534	512	496	505	500	483	495	509	6082
1981	501	481	540	534	565	518	557	547	529	543	530	546	6391
1982	557	488	527	538	547	526	540	534	523	533	533	541	6387
1983	497	469	527	540	594	558	528	550	535	550	538	548	6434
1984	513	487	548	556	582	504	590	521	534	530	539	566	6470
1985	517	502	560	517	556	538	526	532	507	550	543	553	6401
1986	530	453	526	542	563	534	538	552	507	537	516	528	6326
1987	530	505	528	512	591	538	509	512	536	565	540	554	6420
1988	542	496	593	567	552	536	556	559	534	536	545	530	6546
1989	555	506	538	503	533	510	520	516	524	536	521	529	6291
1990	533	487	531	527	543	524	516	498	515	531	516	539	6260
1991	516	450	521	524	547	528	529	534	486	532	508	537	6212
1992	512	472	542	540	571	535	542	517	518	546	510	510	6315
1993	498	464	506	507	538	497	545	505	494	519	518	514	6105
1994	519	453	540	529	526	523	498	511	505	529	521	511	6165
1995	513	461	537	495	546	509	509	518	518	533	537	536	6212
1996	514	491	526	501	529	519	542	522	483	509	478	523	6137
1997	512	432	479	503	526	456	482	451	448	487	497	519	5792
1998	503	439	513	542	536	497	508	495	481	481	455	466	5916
1999	453	431	448	434	484	454	448	464	409	479	513	509	5526
2000	542	506	546	546	580	536	531	525	526	526	524	524	6412
2001	505	447	518	517	535	507	516	494	497	514	490	507	6047
2002	492	437	499	470	501	480	494	496	487	520	505	500	5881
2003	489	445	509	489	507	474	500	519	487	535	499	510	5963
2004	507	481	528	505	532	506	539	526	516	539	530	548	6257
2005	506	477	519	521	541	516	546	531	511	547	539	548	6302
2006	549	494	532	532	518	534	499	507	497	541	521	540	6264
2007	542	467	540	528	535	539	538	526	527	538	523	551	6354
2008	527	506	529	503	528	521	541	544	510	535	523	554	6321
2009	560	498	561	536	540	535	539	541	522	532	520	551	6435

SNOWFALL (inches) 2009 WENO ISLAND (PTKK)

YEAR	JUL	AUG	SEP	OCT	NOV	DEC	JAN	FEB	MAR	APR	MAY	JUN	TOTAL
1980-81	0.0	0.0	0.0	0.0	0.0	0.0	0.0	0.0	0.0	0.0	0.0	0.0	0.0
1981-82	0.0	0.0	0.0	0.0	0.0	0.0	0.0	0.0	0.0	0.0	0.0	0.0	0.0
1982-83	0.0	0.0	0.0	0.0	0.0	0.0	0.0	0.0	0.0	0.0	0.0	0.0	0.0
1983-84	0.0	0.0	0.0	0.0	0.0	0.0	0.0	0.0	0.0	0.0	0.0	0.0	0.0
1984-85	0.0	0.0	0.0	0.0	0.0	0.0	0.0	0.0	0.0	0.0	0.0	0.0	0.0
1985-86	0.0	0.0	0.0	0.0	0.0	0.0	0.0	0.0	0.0	0.0	0.0	0.0	0.0
1986-87	0.0	0.0	0.0	0.0	0.0	0.0	0.0	0.0	0.0	0.0	0.0	0.0	0.0
1987-88	0.0	0.0	0.0	0.0	0.0	0.0	0.0	0.0	0.0	0.0	0.0	0.0	0.0
1988-89	0.0	0.0	0.0	0.0	0.0	0.0	0.0	0.0	0.0	0.0	0.0	0.0	0.0
1989-90	0.0	0.0	0.0	0.0	0.0	0.0	0.0	0.0	0.0	0.0	0.0	0.0	0.0
1990-91	0.0	0.0	0.0	0.0	0.0	0.0	0.0	0.0	0.0	0.0	0.0	0.0	0.0
1991-92	0.0	0.0	0.0	0.0	0.0	0.0	0.0	0.0	0.0	0.0	0.0	0.0	0.0
1992-93	0.0	0.0	0.0	0.0	0.0	0.0	0.0	0.0	0.0	0.0	0.0	0.0	0.0
1993-94	0.0	0.0	0.0	0.0	0.0	0.0	0.0	0.0	0.0	0.0	0.0	0.0	0.0
1994-95	0.0	0.0	0.0	0.0	0.0	0.0	0.0	0.0	0.0	0.0	0.0	0.0	0.0
1995-96	0.0	0.0	0.0	0.0	0.0	0.0	0.0	0.0	0.0	0.0	0.0	0.0	0.0
1996-97	0.0	0.0	0.0	0.0	0.0	0.0	0.0	0.0	0.0	0.0	0.0	0.0	0.0
1997-98	0.0	0.0	0.0	0.0	0.0	0.0	0.0	0.0	0.0	0.0	0.0	0.0	0.0
1998-99	0.0	0.0	0.0	0.0	0.0	0.0	0.0	0.0	0.0	0.0	0.0	0.0	0.0
1999-00	0.0	0.0	0.0	0.0	0.0	0.0	0.0	0.0	0.0	0.0	0.0	0.0	0.0
2000-01	0.0	0.0	0.0	0.0	0.0	0.0	0.0	0.0	0.0	0.0	0.0	0.0	0.0
2001-02	0.0	0.0	0.0	0.0	0.0	0.0	0.0	0.0	0.0	0.0	0.0	0.0	0.0
2002-03	0.0	0.0	0.0	0.0	0.0	0.0	0.0	0.0	0.0	0.0	0.0	0.0	0.0
2003-04	0.0	0.0	0.0	0.0	0.0	0.0	0.0	0.0	0.0	0.0	0.0	0.0	0.0
2004-05	0.0	0.0	0.0	0.0	0.0	0.0	0.0	0.0	0.0	0.0	0.0	0.0	0.0
2005-06	0.0	0.0	0.0	0.0	0.0	0.0	0.0	0.0	0.0	0.0	0.0	0.0	0.0
2006-07	0.0	0.0	0.0	0.0	0.0	0.0	0.0	0.0	0.0	0.0	0.0	0.0	0.0
2007-08	0.0	0.0	0.0	0.0	0.0	0.0	0.0	0.0	0.0	0.0	0.0	0.0	0.0
2008-09	0.0	0.0	0.0	0.0	0.0	0.0	0.0	0.0	0.0	0.0	0.0	0.0	0.0
2009-	0.0	0.0	0.0	0.0	0.0	0.0	0.0	0.0	0.0	0.0	0.0	0.0	0.0
POR= 59 YRS	0.0	0.0	0.0	0.0	0.0	0.0	0.0	0.0	0.0	0.0	0.0	0.0	0.0

WBAN : 40505

REFERENCE NOTES :

<p>PAGE 1: THE TEMPERATURE GRAPH SHOWS NORMAL MAXIMUM AND NORMAL MINIMUM DAILY TEMPERATURES (SOLID CURVES) AND THE ACTUAL DAILY HIGH AND LOW TEMPERATURES (VERTICAL BARS).</p> <p>PAGE 2 AND 3: H/C INDICATES HEATING AND COOLING DEGREE DAYS. RH INDICATES RELATIVE HUMIDITY W/O INDICATES WEATHER AND OBSTRUCTIONS S INDICATES SUNSHINE. PR INDICATES PRESSURE. CLOUDINESS ON PAGE 3 IS THE SUM OF THE CEILOMETER AND SATELLITE DATA NOT TO EXCEED EIGHT EIGHTHS(OKTAS).</p> <p>GENERAL: T INDICATES TRACE PRECIPITATION, AN AMOUNT GREATER THAN ZERO BUT LESS THAN THE LOWEST REPORTABLE VALUE. + INDICATES THE VALUE ALSO OCCURS ON EARLIER DATES. BLANK ENTRIES DENOTE MISSING OR UNREPORTED DATA. NORMALS ARE 30-YEAR AVERAGES (1971 - 2000). ASOS INDICATES AUTOMATED SURFACE OBSERVING SYSTEM. PM INDICATES THE LAST DAY OF THE PREVIOUS MONTH. POR (PERIOD OF RECORD) BEGINS WITH THE JANUARY DATA MONTH AND IS THE NUMBER OF YEARS USED TO COMPUTE THE MEAN. INDIVIDUAL MONTHS WITHIN THE POR MAY BE MISSING. WHEN THE POR FOR A NORMAL IS LESS THAN 30 YEARS, THE NORMAL IS PROVISIONAL AND IS BASED ON THE NUMBER OF YEARS INDICATED. 0.* OR * INDICATES THE VALUE OR MEAN-DAYS-WITH IS BETWEEN 0.00 AND 0.05. CLOUDINESS FOR ASOS STATIONS DIFFERS FROM THE NON-ASOS OBSERVATION TAKEN BY A HUMAN OBSERVER. ASOS STATION CLOUDINESS IS BASED ON TIME-AVERAGED CEILOMETER DATA FOR CLOUDS AT OR BELOW 12,000 FEET AND ON SATELLITE DATA FOR CLOUDS ABOVE 12,000 FEET. THE NUMBER OF DAYS WITH CLEAR, PARTLY CLOUDY, AND CLOUDY CONDITIONS FOR ASOS STATIONS IS THE SUM OF THE CEILOMETER AND SATELLITE DATA FOR THE SUNRISE TO SUNSET PERIOD.</p>	<p>GENERAL CONTINUED: CLEAR INDICATES 0 - 2 OKTAS, PARTLY CLOUDY INDICATES 3 - 6 OKTAS, AND CLOUDY INDICATES 7 OR 8 OKTAS. WHEN AT LEAST ONE OF THE ELEMENTS (CEILOMETER OR SATELLITE) IS MISSING, THE DAILY CLOUDINESS IS NOT COMPUTED. WIND DIRECTION IS RECORDED IN TENS OF DEGREES (2 DIGITS) CLOCKWISE FROM TRUE NORTH. "00" INDICATES CALM. "36" INDICATES TRUE NORTH. RESULTANT WIND IS THE VECTOR AVERAGE OF THE SPEED AND DIRECTION. AVERAGE TEMPERATURE IS THE SUM OF THE MEAN DAILY MAXIMUM AND MINIMUM TEMPERATURE DIVIDED BY 2. SNOWFALL DATA COMPRISE ALL FORMS OF FROZEN PRECIPITATION, INCLUDING HAIL. A HEATING (COOLING) DEGREE DAY IS THE DIFFERENCE BETWEEN THE AVERAGE DAILY TEMPERATURE AND 65 F. DRY BULB IS THE TEMPERATURE OF THE AMBIENT AIR. DEW POINT IS THE TEMPERATURE TO WHICH THE AIR MUST BE COOLED TO ACHIEVE 100 PERCENT RELATIVE HUMIDITY. WET BULB IS THE TEMPERATURE THE AIR WOULD HAVE IF THE MOISTURE CONTENT WAS INCREASED TO 100 PERCENT RELATIVE HUMIDITY.</p> <p>ON JULY 1, 1996, THE NATIONAL WEATHER SERVICE BEGAN USING THE "METAR" OBSERVATION CODE THAT WAS ALREADY EMPLOYED BY MOST OTHER NATIONS OF THE WORLD. THE MOST NOTICEABLE DIFFERENCE IN THIS ANNUAL PUBLICATION WILL BE THE CHANGE IN UNITS FROM TENTHS TO EIGHTS(OKTAS) FOR REPORTING THE AMOUNT OF SKY COVER.</p> <p>NOTE: The "Period of Record:(POR) for all "averages" is based on the "Summary of the Day First Order Station" and "Cooperative Summary of the Day" archives.</p>
---------------------------------------------------------------------------------------------------------------------------------------------------------------------------------------------------------------------------------------------------------------------------------------------------------------------------------------------------------------------------------------------------------------------------------------------------------------------------------------------------------------------------------------------------------------------------------------------------------------------------------------------------------------------------------------------------------------------------------------------------------------------------------------------------------------------------------------------------------------------------------------------------------------------------------------------------------------------------------------------------------------------------------------------------------------------------------------------------------------------------------------------------------------------------------------------------------------------------------------------------------------------------------------------------------------------------------------------------------------------------------------------------------------------------------------------------------------------------------------------------------------------------------------------------------------------------------------------------------------------------------------------------------------------------------------------------------------------------------------	--------------------------------------------------------------------------------------------------------------------------------------------------------------------------------------------------------------------------------------------------------------------------------------------------------------------------------------------------------------------------------------------------------------------------------------------------------------------------------------------------------------------------------------------------------------------------------------------------------------------------------------------------------------------------------------------------------------------------------------------------------------------------------------------------------------------------------------------------------------------------------------------------------------------------------------------------------------------------------------------------------------------------------------------------------------------------------------------------------------------------------------------------------------------------------------------------------------------------------------------------------------------------------------------------------------------------------------------------------------------------------------------------------------------------------------------------------------------------------------------------------------------------------------------------------

2009

WENO ISLAND PACIFIC (PTKK)

Truk Atoll, located in the Western Pacific about 500 miles north of the equator, is comprised of numerous small coral and high volcanic islands scattered over a large lagoon and surrounded by a 125 mile-long barrier reef. Moen Island, roughly triangular in shape and 7.3 square miles in area, is the second largest of the 19 volcanic islands. Its highest point is Mount Teroken, which rises to an elevation of 1,214 feet, and has dense, tropical forests covering its upper reaches and small streams descending its slopes.

The Weather Station is situated on northwestern Moen about 300 feet east of Truk Lagoon and immediately south of the approach end of the airport runway.

A steep-sided 754 foot hill lies a short distance northeast of the Weather Station, and a northeast to southwest trending mountain ridge, of which Mount Teroken is part, to the east. In funneling between these high points, the northeasterly trade winds are deflected to north-northeasterly, and at times generate local eddies with a southerly component near the Weather Station.

From about November to June the climate of Truk is chiefly influenced by the northeasterly trade winds, with average monthly speeds of 8 to 12 miles per hour. By about April, however, the trades begin to weaken, and by July have given way to the lighter and more variable winds of the doldrums. Between July and November the island is frequently under the influence of the Intertropical Convergence Zone which has moved northward into the area. This is also the season when moist southerly winds and tropical disturbances, many of them associated with the ITCZ, are most frequent and when humidities are often oppressively high.

Rainfall at Truk averages about 140 inches a year. A relatively dry period occurs from January to March, when monthly averages run below 8.50 inches. February is the driest month. Rainfall varies widely from year to year and seasonally. Annual totals at Truk have been as low as 120 inches and as high as 180 inches, while even during the ordinarily drier season of January to March, the monthly rainfall has been as much as 24 inches in individual years. However, it has also been less than 1 inch, so that extended dry spells are not uncommon.

The temperature is remarkably uniform throughout the year, with less than one-half degree separating the averages of the warmest and coolest months. With highs in the mid 80s and lows in the mid 70s, the daily range is about 10 degrees. Temperatures below 70 degrees are rare. Every month has had a high temperature of at least 90 degrees. Humidities are high throughout the year.

Although the major typhoon tracks of the Western Pacific lie well to the north and west of Truk, several of the storms have passed close to or over the island within recent years. The storms have caused widespread damage to buildings and to coconut palms and other crops, as well as wave damage to shorelines and coastal structures.

Station Location

WENO ISLAND

LOCATION	Occupied From	Occupied To	Airline Distances and Directions from previous Location	Latitude		ELEVATION ABOVE										REMARKS
				NORTH	EAST	SEA LEVEL	GROUND								AUTOMATIC OBSERVING EQUIPMENT *	
						GROUND TEMPERATURE SITE	WIND INSTRUMENT	EXTREME THERMOMETERS	PSYCHROMETER	SUNSHINE SWITCH	TIPPING BUCKET RAIN GAUGE	WEIGHING RAIN GAUGE	8 INCH RAIN GAUGE	HYGROTHERMOMETER		
<p>*NOTE:</p> <p>AIRPORT</p> <p>MOEN IS Truk Atoll Airport</p>	6/5/84	Present	720 ft. WSW	7° 27'	151° 50'	5	23	6	5	7	3		3			<p>Instruments commissioned 6/12/84. Changed from Truk to Chuuk 5/21/90.</p>

* TYPE
M = AMOS
T = AUTOB
S = ASOS
W = AWOS

* NOTES: For earlier station history see previous editions.

This page intentionally left blank.

For Hard Copy Subscription:

Price and ordering information: NCDC Subscribing Service Center, 310 State Route 956, Building 300, Rocket Center, WV 26726.

INQUIRES/COMMENTS CALL: Toll Free (866) 742-3322

Visit our Web Site for other weather data: www.ncdc.noa.gov

Non-Subscription Request:

NCDC Customer Services;

Phone: 828-271-4800

Fax: 828-271-4876

Email: ncdc.orders@noaa.gov

OFFICIAL BUSINESS

PENALTY FOR PRIVATE USE \$300

CHANGE SERVICE REQUESTED

**FIRST CLASS
POSTAGE & FEES PAID
United States Department of Commerce
NOAA Permit No. G - 19**