

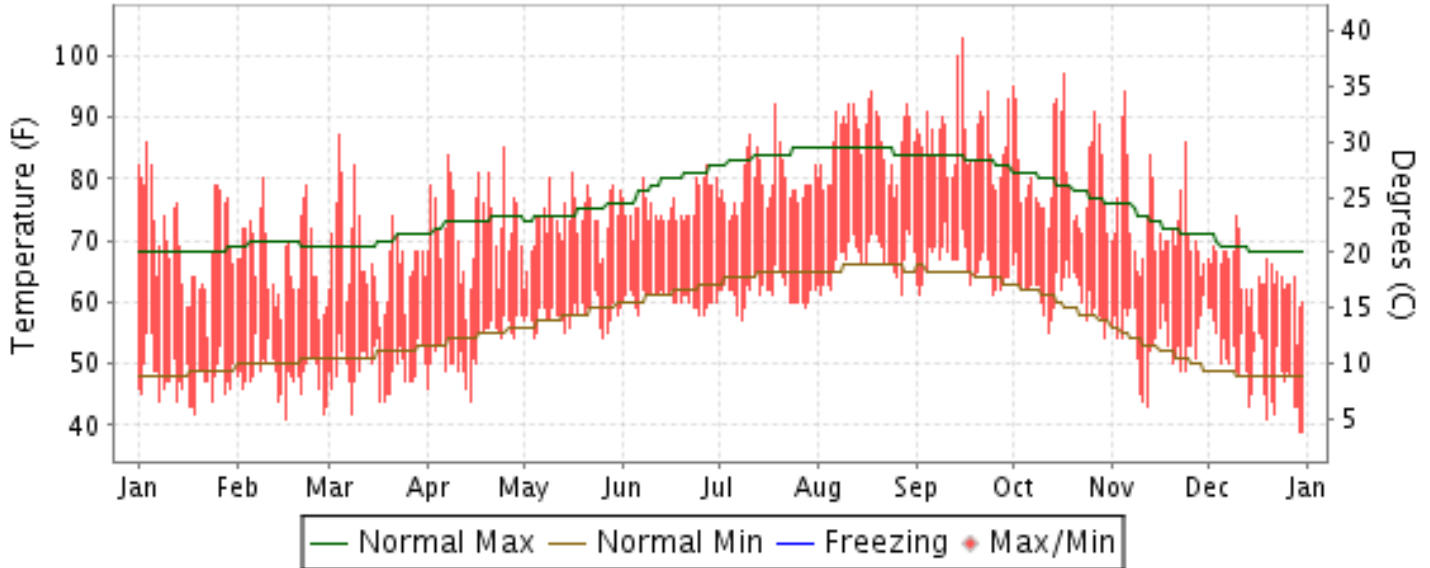


# 2012 LOCAL CLIMATOLOGICAL DATA ANNUAL SUMMARY WITH COMPARATIVE DATA

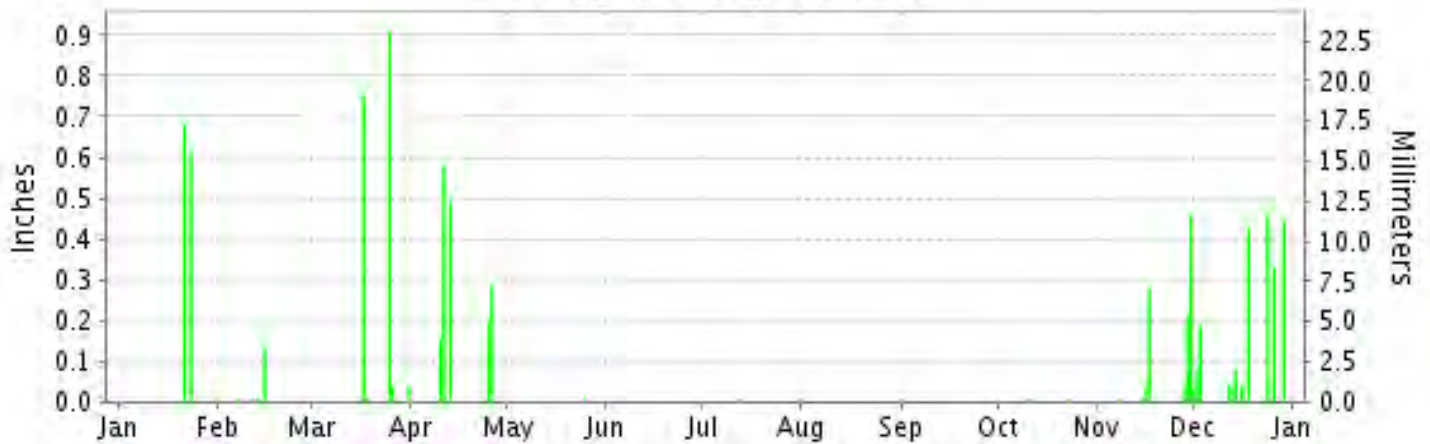
ISSN 0198-0920

## LOS ANGELES, Downtown L.A./USC Campus (KCQT)

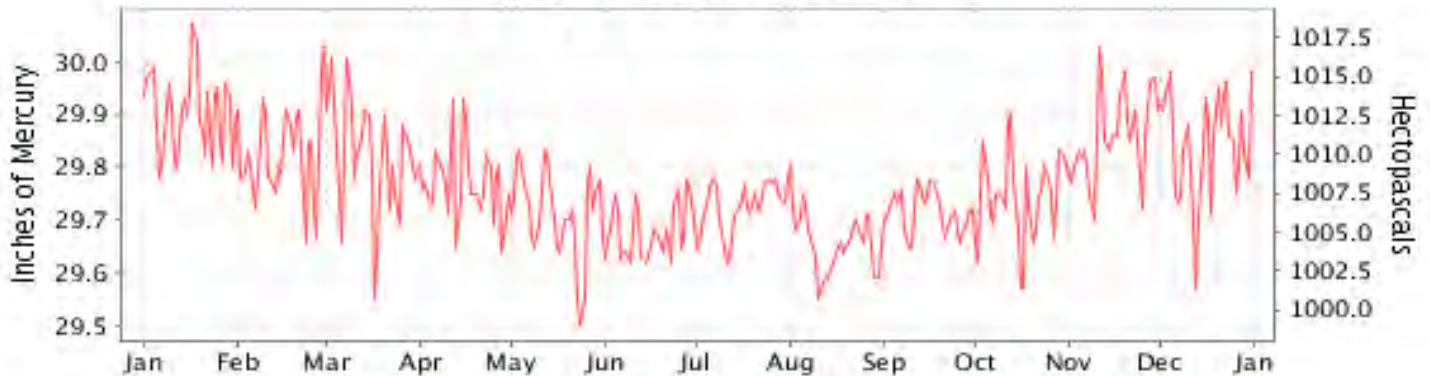
### Daily Max/Min Temperature



### Daily Precipitation



### Daily Station Pressure



I CERTIFY THAT THIS IS AN OFFICIAL PUBLICATION OF THE NATIONAL OCEANIC AND ATMOSPHERIC ADMINISTRATION, AND IS COMPILED FROM RECORDS ON FILE AT THE NATIONAL CLIMATIC DATA CENTER.

NATIONAL OCEANIC AND ATMOSPHERIC ADMINISTRATION

NATIONAL ENVIRONMENTAL SATELLITE, DATA AND INFORMATION SERVICE

NATIONAL CLIMATIC DATA CENTER ASHEVILLE, NORTH CAROLINA

*Thomas R. Karl*  
DIRECTOR  
NATIONAL CLIMATIC DATA CENTER

# METEOROLOGICAL DATA FOR 2012

## LOS ANGELES (KCQT)

LATITUDE: 34° 1'N      LONGITUDE: 118° 17'W      ELEVATION (FT): GRND: 179 BARO: 185      TIME ZONE: PACIFIC (UTC -8)      WBAN: 93134

ELEMENT		JAN	FEB	MAR	APR	MAY	JUN	JUL	AUG	SEP	OCT	NOV	DEC	YEAR	
TEMPERATURE °F	MEAN DAILY MAXIMUM	70.6	67.1	67.3	72.5	73.2	75.7	79.4	86.3	86.7	81.1	73.0	64.3	74.8	
	HIGHEST DAILY MAXIMUM	86	80	87	85	81	82	92	94	103	97	94	74	103	
	DATE OF OCCURRENCE	04	09	04	25	16	27	19	18	15	17	05	10	SEP 15	
	MEAN DAILY MINIMUM	47.5	48.0	49.2	52.7	57.7	60.3	61.6	66.9	65.9	61.2	53.6	49.0	56.1	
	LOWEST DAILY MINIMUM	42	41	42	44	54	58	57	61	61	54	43	39	39	
	DATE OF OCCURRENCE	19	16	08	14	26+	26+	08	27+	25+	30	12	31+	DEC 31+	
	AVERAGE DRY BULB	59.1	57.6	58.3	62.6	65.5	68.0	70.5	76.6	76.3	71.2	63.3	56.7	65.5	
	MEAN WET BULB	48.7	49.1	49.8	53.6	58.1	59.9	62.1	65.5	64.9	59.9	54.4	50.6	56.4	
	MEAN DEW POINT	38.1	41.1	41.6	46.6	53.7	55.3	57.7	60.1	59.2	52.7	46.9	44.7	49.8	
	NUMBER OF DAYS WITH:														
	MAXIMUM >= 90°	0	0	0	0	0	0	0	1	12	8	7	2	0	30
	MAXIMUM <= 32°	0	0	0	0	0	0	0	0	0	0	0	0	0	0
MINIMUM <= 32°	0	0	0	0	0	0	0	0	0	0	0	0	0	0	
MINIMUM <= 0°	0	0	0	0	0	0	0	0	0	0	0	0	0	0	
H/C	HEATING DEGREE DAYS	186	210	209	87	24	0	0	0	0	2	76	250	1044	
	COOLING DEGREE DAYS	11	1	8	24	50	98	179	369	347	202	34	0	1323	
RH	MEAN (PERCENT)	55	61	63	64	71	69	70	63	64	61	66	69	65	
	HOUR 04 LST	66	74	72	79	84	81	84	79	81	75	78	80	78	
	HOUR 10 LST	40	45	49	45	56	55	54	46	42	41	49	59	48	
	HOUR 16 LST	45	52	53	54	61	58	59	50	50	53	62	63	55	
	HOUR 22 LST	67	70	72	75	79	79	81	74	74	71	75	77	75	
W/O	NUMBER OF DAYS WITH:														
	HEAVY FOG(VISBY <= 1/4 MI)	2	0	0	0	0	0	0	0	0	2	3	3	10	
	THUNDERSTORMS	0	0	0	0	0	0	0	0	0	0	0	0	0	
PR	MEAN STATION PRESS. (IN.)	29.90	29.83	29.82	29.77	29.72	29.68	29.72	29.66	29.72	29.74	29.86	29.84	29.77	
	MEAN SEA-LEVEL PRESS. (IN.)	30.10	30.03	30.02	29.97	29.91	29.88	29.92	29.85	29.91	29.93	30.06	30.04	29.97	
WINDS	RESULTANT SPEED (MPH)	0.1	0.0	0.1	0.3	0.4	0.4	0.4	0.5			0.1			
	RES. DIR. (TENS OF DEGS.)	04	14	23	27	25	25	26	27			30			
	MEAN SPEED (MPH)	0.7	1.3	1.8	1.9	1.8	1.8	1.4	1.4	1.1	1.2	1.1	1.3	1.4	
	PREVAIL.DIR.(TENS OF DEGS.)	10	27	27	27	27	26	27	27	27	27	10	27	27	
	MAXIMUM 2-MINUTE WIND														
	SPEED (MPH)	12	14	15	16	10	12	12	9	10	13	14	10	16	
	DIR. (TENS OF DEGS.)	28	02	14	31	13	27	27	28	27	31	36	35	31	
	DATE OF OCCURRENCE	31	16	25	01	25	05	16	27	12	24	10	27	APR 01	
	MAXIMUM 3-SECOND WIND:														
	SPEED (MPH)	21	28	31	26	23	18	18	17	16	22	29	23	31	
DIR. (TENS OF DEGS.)	28	03	27	31	27	27	28	26	28	36	27	34	27		
DATE OF OCCURRENCE	21	16	18	01	25	05	16	23	26	24	09	18	MAR 18		
PRECIPITATION	WATER EQUIVALENT:														
	TOTAL (IN.)	1.30	0.16	1.75	1.71	0.01	0.00	0.01	0.00	T	0.02	1.03	2.16	8.15	
	GREATEST 24-HOUR (IN.)	0.68	0.13	0.95	0.73	0.01	0.00	0.01	0.00	T	0.01	0.46	0.47	0.95	
	DATE OF OCCURRENCE	21	15	25-26	10-11	25		12		05	23+	30	18	MAR 25-26	
	NUMBER OF DAYS WITH:														
	PRECIPITATION 0.01	2	4	5	5	1	0	1	0	0	2	7	11	38	
PRECIPITATION 0.10	2	1	2	5	0	0	0	0	0	0	3	5	18		
PRECIPITATION 1.00	0	0	0	0	0	0	0	0	0	0	0	0	0		
SNOWFALL	SNOW,ICE PELLETS,HAIL														
	TOTAL (IN.)														
	GREATEST 24-HOUR (IN.)														
	DATE OF OCCURRENCE														
	MAXIMUM SNOW DEPTH (IN.)														
DATE OF OCCURRENCE															
NUMBER OF DAYS WITH:															
SNOWFALL >= 1.0															

# NORMALS, MEANS, AND EXTREMES LOS ANGELES (KCQT)

**LATITUDE:** 34° 1'N      **LONGITUDE:** 118° 17'W      **ELEVATION (FT):** GRND: 179 BARO: 185      **TIME ZONE:** PACIFIC (UTC -8)      **WBAN: 93134**

	ELEMENT	POR	JAN	FEB	MAR	APR	MAY	JUN	JUL	AUG	SEP	OCT	NOV	DEC	YEAR	
<b>TEMPERATURE °F</b>	NORMAL DAILY MAXIMUM	30	68.2	68.6	70.2	72.7	74.5	78.1	83.1	84.4	83.1	78.5	72.8	67.7	75.2	
	MEAN DAILY MAXIMUM	99	66.6	67.1	68.7	71.0	73.2	76.8	82.5	83.3	82.0	77.7	72.7	67.4	74.1	
	HIGHEST DAILY MAXIMUM	72	95	95	98	106	102	112	107	105	113	108	100	91	113	
	YEAR OF OCCURRENCE		1971	1995	1988	1989	1967	1990	1985	1983	2010	1987	1966	1979	1979	SEP 2010
	MEAN OF EXTREME MAXS.	100	81.3	82.3	84.4	88.0	89.1	89.2	92.8	94.1	97.2	94.4	87.5	81.4	88.5	
	NORMAL DAILY MINIMUM	30	47.8	49.3	51.0	53.5	57.1	60.3	63.6	64.1	63.1	58.7	52.0	47.5	55.7	
	MEAN DAILY MINIMUM	99	48.4	49.4	51.2	53.4	56.8	59.7	63.4	64.0	62.8	58.9	53.2	49.1	55.9	
	LOWEST DAILY MINIMUM	72	28	34	35	39	46	49	54	53	51	41	38	30	28	
	YEAR OF OCCURRENCE		1949	1989	1976	1975	1964	1999	1952	1943	1948	1971	1978	1978	1978	JAN 1949
	MEAN OF EXTREME MINS.	100	40.0	42.2	43.8	46.9	51.4	55.2	59.1	59.9	57.4	52.2	45.1	40.6	49.5	
	NORMAL DRY BULB	30	58.0	58.9	60.6	63.1	65.8	69.2	73.3	74.3	73.1	68.6	62.4	57.6	65.4	
	MEAN DRY BULB	99	57.5	58.3	59.9	62.2	65.0	68.3	72.9	73.7	72.4	68.3	63.0	58.3	65.0	
	MEAN WET BULB	13	43.4	46.4	48.0	50.1	54.9	58.8	62.2	62.5	61.0	55.7	48.7	44.3	53.0	
	MEAN DEW POINT	13	45.9	46.3	49.7	51.9	56.1	59.8	62.9	62.9	60.8	56.6	48.9	44.6	53.9	
	NORMAL NO. DAYS WITH: MAXIMUM >= 90	30	0.0	0.2	0.4	1.2	0.9	1.5	3.0	5.0	5.4	3.1	0.7	0.0	21.4	
	MAXIMUM <= 32	30	0.0	0.0	0.0	0.0	0.0	0.0	0.0	0.0	0.0	0.0	0.0	0.0	0.0	
MINIMUM <= 32	30	0.0	0.0	0.0	0.0	0.0	0.0	0.0	0.0	0.0	0.0	0.0	0.0	0.0		
MINIMUM <= 0	30	0.0	0.0	0.0	0.0	0.0	0.0	0.0	0.0	0.0	0.0	0.0	0.0	0.0		
<b>H/C</b>	NORMAL HEATING DEG. DAYS	30	226	184	157	101	43	8	0	0	2	18	111	234	1084	
	NORMAL COOLING DEG. DAYS	30	9	14	20	44	67	134	259	287	244	129	33	4	1244	
<b>RH</b>	NORMAL (PERCENT)	30														
	HOUR 04 LST	30														
	HOUR 10 LST	30														
	HOUR 16 LST	30														
	HOUR 22 LST	30														
<b>S</b>	PERCENT POSSIBLE SUNSHINE	32	69	72	73	70	66	65	82	83	79	73	74	71	73	
<b>W/O</b>	MEAN NO. DAYS WITH: HEAVY FOG(VISBY <= 1/4 MI)	16	0.9	0.4	0.4	0.2	0.3	0.1	0.1	0.1	0.6	1.1	1.2	1.1	6.5	
	THUNDERSTORMS	34	0.3	0.4	0.3	0.4	0.0	0.1	0.1	0.2	0.2	0.2	0.2	0.1	2.5	
<b>CLOUDINESS</b>	MEAN: SUNRISE-SUNSET (OKTAS)	34	3.5	3.8	3.8	3.8	3.8	3.4	2.2	2.1	2.4	3.0	3.0	3.4	3.2	
	MIDNIGHT-MIDNIGHT (OKTAS)															
	MEAN NO. DAYS WITH: CLEAR	34	14.3	12.4	12.9	12.0	11.4	13.6	20.9	22.4	18.4	16.1	16.5	15.0	185.9	
	PARTLY CLOUDY	34	8.1	6.9	9.3	9.8	11.8	10.5	8.9	7.4	8.4	9.3	7.4	8.0	105.8	
	CLOUDY	34	8.5	9.0	8.7	8.2	7.8	5.9	1.1	1.2	3.3	5.6	6.1	8.0	73.4	
<b>PR</b>	MEAN STATION PRESSURE(IN)	13	29.88	29.85	29.82	29.79	29.74	29.70	29.71	29.70	29.69	29.75	29.84	29.88	29.78	
	MEAN SEA-LEVEL PRES. (IN)	13	30.08	30.05	30.02	29.98	29.94	29.90	29.91	29.89	29.88	29.95	30.03	30.08	29.98	
<b>WINDS</b>	MEAN SPEED (MPH)	13	1.5	2.1	2.3	2.6	2.5	2.4	2.3	2.1	2.0	1.6	1.4	1.4	2.0	
	PREVAIL.DIR(TENS OF DEGS)	7	10	27	27	27	27	27	27	27	27	27	27	10	27	
	MAXIMUM 2-MINUTE: SPEED (MPH)	13	21	18	21	24	16	13	13	13	15	18	18	23	24	
	DIR. (TENS OF DEGS)		33	27	33	35	36	27	26	26	27	35	32	01	35	
	YEAR OF OCCURRENCE		2000	2009	2003	2007	2011	2011	2005	2005	2004	2009	2005	2011	APR 2007	
	MAXIMUM 3-SECOND SPEED (MPH)	13	35	31	36	39	31	24	20	23	25	32	29	44	44	
	DIR. (TENS OF DEGS)		21	06	01	35	36	14	25	22	26	02	27	01	01	
	YEAR OF OCCURRENCE		2006	2008	2007	2007	2011	2006	2008	2007	2004	2009	2012	2011	DEC 2011	
<b>PRECIPITATION</b>	NORMAL (IN)	30	3.12	3.80	2.43	0.91	0.26	0.09	0.01	0.04	0.24	0.66	1.04	2.33	14.93	
	MAXIMUM MONTHLY (IN)	72	14.94	13.68	8.37	6.02	3.10	0.98	0.18	2.26	2.82	4.56	9.68	10.23	14.94	
	YEAR OF OCCURRENCE		1969	1998	1983	1965	1998	1999	1986	1977	1976	2004	1965	2010	JAN 1969	
	MINIMUM MONTHLY (IN)	72	0.00	0.00	0.00	0.00	0.00	0.00	0.00	0.00	0.00	0.00	0.00	0.00	0.00	
	YEAR OF OCCURRENCE		1976	1984	1959	1979	1981	1982	1983	1982	1980	1980	1980	1990	DEC 1990	
	MAXIMUM IN 24 HOURS (IN)	72	6.11	4.02	4.26	2.05	2.41	0.76	0.18	2.22	1.95	2.20	4.07	5.88	6.11	
	YEAR OF OCCURRENCE		1956	1944	2003	1956	1977	1993	1986	1977	1986	2004	1970	2004	JAN 1956	
	NORMAL NO. DAYS WITH: PRECIPITATION >= 0.01	30	6.1	6.4	5.5	3.2	1.3	0.6	0.3	0.3	1.0	2.5	3.3	5.2	35.7	
	PRECIPITATION >= 1.00	30	1.1	1.3	0.7	0.2	0.1	0.0	0.0	0.0	0.1	0.1	0.2	0.6	4.4	
<b>SNOWFALL</b>	NORMAL (IN)	30	0.00	0.00	0.00	0.00	0.00	0.00	0.00	0.00	0.00	0.00	0.00	0.00	0.0	
	MAXIMUM MONTHLY (IN)	56	0.3	T	0.0	0.0	0.0	0.0	0.0	0.0	0.0	0.0	0.0	T	0.3	
	YEAR OF OCCURRENCE		1949	1951										1947	JAN 1949	
	MAXIMUM IN 24 HOURS (IN)	56	0.3	T	0.0	0.0	0.0	0.0	0.0	0.0	0.0	0.0	0.0	T	0.3	
	YEAR OF OCCURRENCE		1949	1951										1947	JAN 1949	
	MAXIMUM SNOW DEPTH (IN)	56	0	0	0	0	0	0	0	0	0	0	0	0	0	
YEAR OF OCCURRENCE																
NORMAL NO. DAYS WITH: SNOWFALL >= 1.0	30	0.0	0.0	0.0	0.0	0.0	0.0	0.0	0.0	0.0	0.0	0.0	0.0	0.0		

**PRECIPITATION (inches) 2012 LOS ANGELES (KCQT)**

YEAR	JAN	FEB	MAR	APR	MAY	JUN	JUL	AUG	SEP	OCT	NOV	DEC	ANNUAL
1983	6.49	4.37	8.37	5.16	0.36	0.01	0.00	0.79	1.99	0.75	2.52	3.23	34.04
1984	0.17	0.00	0.28	0.69	0.00	0.01	0.00	0.40	0.23	0.15	1.44	5.53	8.90
1985	0.71	2.84	1.29	0.00	0.23	0.00	0.00	0.00	0.19	0.42	2.91	0.33	8.92
1986	2.19	6.10	5.27	0.45	0.00	0.00	0.18	0.00	1.97	0.53	0.94	0.37	18.00
1987	1.39	1.22	0.95	0.06	0.00	0.05	0.01	0.00	0.09	2.37	1.13	1.84	9.11
1988	1.65	1.72	0.26	3.41	0.00	0.00	0.00	0.05	0.04	0.00	0.70	3.80	11.63
1989	0.73	1.90	0.81	0.00	0.05	0.00	0.00	0.00	0.35	0.43	0.29	0.00	4.56
1990	1.24	3.12	0.17	0.58	1.17	0.00	0.00	0.02	0.00	0.00	0.19	0.00	6.49
1991	1.69	4.13	5.92	0.03	0.00	0.01	0.13	0.00	0.09	0.37	0.00	3.22	15.59
1992	1.74	7.96	7.12	0.33	0.04	0.00	0.08	0.00	0.00	0.70	0.00	4.68	22.65
1993	11.77	6.61	2.74	0.00	0.02	0.76	0.00	0.00	0.00	0.16	0.66	0.78	23.50
1994	0.33	3.21	1.86	0.83	0.28	0.00	0.00	0.00	0.00	0.19	0.61	1.35	8.66
1995	12.56	1.30	6.98	0.58	0.18	0.60	0.02	0.00	0.00	0.00	0.09	1.34	23.65
1996	3.16	4.94	2.16	0.71	0.04	0.00	.00	.00	.00	1.06	1.59	4.09	17.75
1997	5.58	0.08	0.00	0.00	0.00	0.00	0.00	0.00	0.45	0.00	2.06	2.52	10.69
1998	4.12	13.68	4.06	0.97	3.10	0.05	0.00	0.00	0.01	0.00	1.32	0.54	27.85
1999	1.85	0.56	1.24	2.57	0.02	0.98	T	0.00	T	0.00	0.44	0.40	8.06
2000	0.88	5.54	2.82	1.49	T	0.00	0.00	0.07	0.15	0.98	T	T	11.93
2001	5.59	8.87	1.17	1.11	0.00	T	T	0.00	0.00	0.06	1.42	1.38	19.60
2002	0.80	0.29	0.32	0.09	0.05	0.01	0.00	T	T	0.05	2.43	3.31	7.35
2003	T	4.64	4.32	0.71	1.02	0.01	T	T	0.00	0.53	0.79	1.35	13.37
2004	0.47	4.89	1.17	0.04	0.00	0.00	T	0.00	T	4.56	0.20	8.77	20.10
2005	9.32	11.02	2.14	1.05	0.19	T	T	0.00	0.29	1.35	0.22	1.03	26.61
2006	2.06	2.37	2.87	2.15	0.85	T	T	0.00	T	0.34	0.16	0.81	11.61
2007	0.19	0.92	0.05	0.74	0.00	0.00	T	T	0.52	0.95	0.56	1.73	5.66
2008	7.97	1.64	0.01	0.04	0.11	0.00	0.00	0.00	T	0.02	1.85	2.79	14.43
2009	0.34	3.57	0.33	0.03	T	0.15	0.00	0.00	0.00	2.07	0.01	2.89	9.39
2010	4.94	4.27	0.48	1.65	0.05	0.00	T	0.00	T	0.94	0.53	10.23	23.09
2011	0.79	3.29	3.96	T	0.45	0.01	0.00	0.00	T	1.17	1.58	1.01	12.26
2012	1.30	0.16	1.75	1.71	0.01	0.00	0.01	0.00	T	0.02	1.03	2.16	8.15
POR= 100 YRS	3.20	3.35	2.39	1.06	0.24	0.07	0.01	0.05	0.26	0.46	1.27	2.41	14.77

WBAN : 93134

**AVERAGE TEMPERATURE (°F) 2012 LOS ANGELES (KCQT)**

YEAR	JAN	FEB	MAR	APR	MAY	JUN	JUL	AUG	SEP	OCT	NOV	DEC	ANNUAL
1983	61.9	63.0	63.9	63.2	70.7	70.7	75.9	80.8	79.1	74.2	63.5	59.8	68.9
1984	61.2	61.9	65.6	65.3	72.4	72.2	78.7	76.4	81.3	68.5	61.0	57.2	68.5
1985	57.5	60.4	59.3	66.8	66.3	73.5	79.2	75.7	71.8	71.3	60.4	61.7	67.0
1986	65.9	62.4	64.5	66.4	68.1	71.2	73.2	76.0	68.8	69.4	66.4	60.1	67.7
1987	57.2	60.3	61.2	67.8	68.1	69.7	70.8	73.0	75.2	71.9	62.9	54.4	66.0
1988	58.3	62.9	64.9	64.1	67.2	67.9	74.3	72.9	72.2	69.7	61.9	57.1	66.1
1989	56.3	56.4	62.4	67.9	66.2	69.8	75.1	72.8	74.5	69.2	66.7	62.7	66.7
1990	59.4	58.0	61.7	65.7	66.9	74.3	77.3	74.0	76.0	73.2	65.6	57.5	67.5
1991	59.2	63.5	56.8	64.2	63.9	67.1	71.0	73.1	73.6	72.1	66.2	59.6	65.9
1992	60.3	62.3	60.8	69.6	69.0	70.4	75.9	78.9	76.6	70.4	65.1	56.5	68.0
1993	57.3	58.3	64.5	67.0	68.9	72.4	73.0	74.4	74.3	71.2	64.6	60.8	67.2
1994	62.2	59.3	64.7	64.3	65.1	74.4	73.6	80.5	76.5	70.4	59.9	59.9	67.6
1995	58.4	65.3	62.6	64.8	64.0	69.0	75.8	77.5	77.0	71.5	67.1	60.9	67.8
1996	60.9	61.3	63.0	68.8	69.0	71.9	75.1	77.2	73.5	67.0	64.3	59.7	67.6
1997	58.7	61.0	65.1	65.7	72.7	71.0	73.2	77.6	79.8	71.1	65.2	58.9	68.3
1998	58.8	57.1	61.9	62.2	64.2	68.8	76.2	79.9	73.6	69.0	62.4	59.1	66.1
1999	60.8	59.9	56.9	59.4	63.3	66.8	71.8	71.4	69.2	71.5	61.8	58.1	64.2
2000	58.5	57.6	59.5	64.1	67.7	71.2	72.3	74.7	72.7	65.1	59.0	58.9	65.1
2001	54.4	54.7	60.4	59.9	67.3	70.8	71.0	72.0	71.4	68.2	62.0	56.4	64.0
2002	56.8	60.7	59.8	61.3	64.5	68.7	72.3	71.4	72.2	64.7	64.4	56.6	64.5
2003	63.4	58.9	61.9	60.7	64.4	67.1	75.5	75.6	71.5	70.3	59.8	56.5	65.5
2004	57.2	56.3	64.8	65.6	69.8	69.3	73.0	72.5	74.6	65.1	59.1	57.8	65.4
2005	58.3	58.8	60.7	62.9	67.3	67.6	73.0	73.2	69.8	66.5	63.9	59.1	65.1
2006	58.0	59.7	55.3	60.9	66.9	73.5	79.9	75.6	74.3	69.8	67.4	59.7	66.8
2007	57.6	61.5	63.2	62.6	65.2	68.9	74.3	75.5	71.8	68.4	62.6	55.9	65.6
2008	55.4	57.6	62.2	64.8	65.9	71.6	73.7	75.2	73.8	72.4	67.1	57.2	66.4
2009	62.5	58.2	60.8	63.2	67.6	67.7	74.1	74.3	76.2	68.6	64.0	57.5	66.2
2010	60.2	60.0	62.9	61.9	65.5	69.9	71.9	73.6	74.0	69.4	61.3	58.1	65.7
2011	59.5	55.6	59.8	64.0	64.8	66.8	72.1	72.3	70.6	67.1	60.1	54.7	64.0
2012	59.1	57.6	58.3	62.6	65.5	68.0	70.5	76.6	76.3	71.2	63.3	56.7	65.5
POR= 99 YRS	57.5	58.3	59.9	62.2	65.0	68.3	72.9	73.7	72.4	68.3	63.0	58.3	65.0

**HEATING DEGREE DAYS (base 65°F) 2012 LOS ANGELES (KCQT)**

YEAR	JUL	AUG	SEP	OCT	NOV	DEC	JAN	FEB	MAR	APR	MAY	JUN	TOTAL
1983-84	0	0	0	0	99	158	140	99	29	59	5	0	589
1984-85	0	0	0	4	129	239	225	162	179	40	21	0	999
1985-86	0	0	0	0	163	131	42	125	92	32	7	0	592
1986-87	0	0	8	2	14	151	241	140	131	31	19	0	737
1987-88	0	0	0	3	91	323	216	82	81	88	30	11	925
1988-89	0	0	1	2	98	258	270	271	104	36	27	5	1072
1989-90	0	0	0	2	27	102	173	206	130	26	16	2	684
1990-91	0	0	0	0	42	244	183	63	248	74	72	2	928
1991-92	0	0	0	23	46	168	159	114	125	1	0	0	636
1992-93	0	0	0	1	49	256	235	181	68	9	0	6	805
1993-94	0	0	0	0	45	136	106	153	61	60	35	0	596
1994-95	0	0	0	0	158	160	211	62	91	59	52	14	807
1995-96	0	0	0	1	6	132	146	125	83	16	3	1	513
1996-97	0	0	0	31	76	158	196	120	61	49	0	0	691
1997-98	0	0	0	0	71	193	185	216	118	130	36	3	952
1998-99	0	0	0	1	79	200	137	144	245	211	66	32	1115
1999-00	0	0	2	1	95	207	197	211	166	61	9	0	949
2000-01	0	0	0	36	179	186	321	293	147	164	5	0	1331
2001-02	0	0	0	3	97	260	246	139	156	108	50	1	1060
2002-03	0	0	0	47	51	254	86	169	117	137	57	5	923
2003-04	0	0	0	7	156	256	237	247	54	45	0	0	1002
2004-05	0	0	0	43	168	236	214	169	132	76	13	0	1051
2005-06	0	0	0	29	71	184	219	160	294	124	9	0	1090
2006-07	0	0	0	1	41	162	234	119	87	81	31	6	762
2007-08	0	0	1	10	91	274	293	214	107	97	57	0	1144
2008-09	0	0	0	6	25	237	118	192	139	102	4	0	823
2009-10	0	0	0	10	53	230	154	150	100	100	25	0	822
2010-11	0	0	0	9	164	214	179	259	174	75	52	8	1134
2011-12	0	0	0	23	152	313	186	210	209	87	24	0	1204
2012-	0	0	0	2	76	250							

WBAN : 93134

**COOLING DEGREE DAYS (base 65°F) 2012 LOS ANGELES (KCQT)**

YEAR	JAN	FEB	MAR	APR	MAY	JUN	JUL	AUG	SEP	OCT	NOV	DEC	TOTAL
1983	44	23	41	21	185	174	342	495	432	292	60	4	2113
1984	29	14	56	73	240	222	433	360	496	123	13	6	2065
1985	0	41	10	100	68	264	447	339	210	203	31	35	1748
1986	77	56	83	80	110	194	261	349	132	145	65	6	1558
1987	6	18	21	120	121	147	186	257	312	221	36	1	1446
1988	13	30	84	68	107	107	297	252	223	154	14	20	1369
1989	8	37	31	131	73	154	318	251	290	139	85	41	1558
1990	10	16	36	54	81	291	388	287	336	262	68	20	1849
1991	8	28	0	54	43	72	191	260	265	250	88	6	1265
1992	17	44	1	146	132	168	347	435	353	175	59	0	1877
1993	6	0	59	77	129	232	254	299	287	199	38	12	1592
1994	25	0	59	47	47	288	272	488	354	178	9	10	1777
1995	13	76	24	61	31	142	341	394	369	212	77	12	1752
1996	25	26	28	134	134	215	320	386	266	101	60	0	1695
1997	7	14	72	79	245	188	260	402	450	196	85	11	2009
1998	0	0	29	53	18	125	356	468	266	132	11	24	1482
1999	14	8	0	49	23	90	217	202	136	208	7	0	954
2000	5	2	4	39	98	192	233	308	239	45	2	3	1170
2001	1	13	9	18	85	180	191	226	200	110	14	3	1050
2002	0	24	1	4	41	121	230	204	222	46	40	0	933
2003	43	2	28	13	48	76	333	336	200	180	5	1	1265
2004	1	0	56	70	154	136	256	238	294	55	0	16	1276
2005	12	0	6	22	93	85	254	259	150	82	43	7	1013
2006	9	16	0	7	73	262	448	334	286	153	121	5	1714
2007	9	28	39	16	42	128	292	334	212	124	27	0	1251
2008	0	6	27	97	91	205	274	325	271	244	97	3	1640
2009	51	8	13	53	88	87	288	293	345	130	28	3	1387
2010	11	17	40	13	48	152	221	274	277	149	59	8	1269
2011	16	1	20	51	51	66	227	232	173	94	13	0	944
2012	11	1	8	24	50	98	179	369	347	202	34	0	1323

## SNOWFALL (inches) 2012 LOS ANGELES (KCQT)

YEAR	JUL	AUG	SEP	OCT	NOV	DEC	JAN	FEB	MAR	APR	MAY	JUN	TOTAL
1970-71	0.0	0.0	0.0	0.0	0.0	0.0	0.0	0.0	0.0	0.0	0.0	0.0	0.0
1971-72	0.0	0.0	0.0	0.0	0.0	0.0	0.0	0.0	0.0	0.0	0.0	0.0	0.0
1972-73	0.0	0.0	0.0	0.0	0.0	0.0	0.0	0.0	0.0	0.0	0.0	0.0	0.0
1973-74	0.0	0.0	0.0	0.0	0.0	0.0	0.0	0.0	0.0	0.0	0.0	0.0	0.0
1974-75	0.0	0.0	0.0	0.0	0.0	0.0	0.0	0.0	0.0	0.0	0.0	0.0	0.0
1975-76	0.0	0.0	0.0	0.0	0.0	0.0	0.0	0.0	0.0	0.0	0.0	0.0	0.0
1976-77	0.0	0.0	0.0	0.0	0.0	0.0	0.0	0.0	0.0	0.0	0.0	0.0	0.0
1977-78	0.0	0.0	0.0	0.0	0.0	0.0	0.0	0.0	0.0	0.0	0.0	0.0	0.0
1978-79	0.0	0.0	0.0	0.0	0.0	0.0	0.0	0.0	0.0	0.0	0.0	0.0	0.0
1979-80	0.0	0.0	0.0	0.0	0.0	0.0	0.0	0.0	0.0	0.0	0.0	0.0	0.0
1980-81	0.0	0.0	0.0	0.0	0.0	0.0	0.0	0.0	0.0	0.0	0.0	0.0	0.0
1981-82	0.0	0.0	0.0	0.0	0.0	0.0	0.0	0.0	0.0	0.0	0.0	0.0	0.0
1982-83	0.0	0.0	0.0	0.0	0.0	0.0	0.0	0.0	0.0	0.0	0.0	0.0	0.0
1983-84	0.0	0.0	0.0	0.0	0.0	0.0	0.0	0.0	0.0	0.0			
1984-85													
1996-97													
1997-98													
1998-99													
1999-00													
2000-01													
2001-02													
2002-03													
2003-04													
2004-05													
POR= 15 YRS	0.0	0.0	0.0	0.0	0.0	0.0	0.0	0.0	0.0	0.0	0.0	0.0	0.0

WBAN : 93134

### REFERENCE NOTES :

PAGE 1:  
THE TEMPERATURE GRAPH SHOWS NORMAL MAXIMUM AND NORMAL MINIMUM DAILY TEMPERATURES (SOLID CURVES) AND THE ACTUAL DAILY HIGH AND LOW TEMPERATURES (VERTICAL BARS).

PAGE 2 AND 3:

H/C INDICATES HEATING AND COOLING DEGREE DAYS.

RH INDICATES RELATIVE HUMIDITY

W/O INDICATES WEATHER AND OBSTRUCTIONS

S INDICATES SUNSHINE.

PR INDICATES PRESSURE.

CLOUDINESS ON PAGE 3 IS THE SUM OF THE CEILOMETER AND SATELLITE DATA NOT TO EXCEED EIGHT EIGHTHS(OKTAS).

GENERAL:

T INDICATES TRACE PRECIPITATION, AN AMOUNT GREATER THAN ZERO BUT LESS THAN THE LOWEST REPORTABLE VALUE.

+ INDICATES THE VALUE ALSO OCCURS ON EARLIER DATES.

BLANK ENTRIES DENOTE MISSING OR UNREPORTED DATA.

ASOS INDICATES AUTOMATED SURFACE OBSERVING SYSTEM.

PM INDICATES THE LAST DAY OF THE PREVIOUS MONTH.

POR (PERIOD OF RECORD) BEGINS WITH THE JANUARY DATA MONTH AND IS THE NUMBER OF YEARS USED TO COMPUTE THE MEAN. INDIVIDUAL MONTHS WITHIN THE POR MAY BE MISSING.

WHEN THE POR FOR A NORMAL IS LESS THAN 30 YEARS, THE NORMAL IS PROVISIONAL AND IS BASED ON THE NUMBER OF YEARS INDICATED.

0.\* OR \* INDICATES THE VALUE OR MEAN-DAYS-WITH IS BETWEEN 0.00 AND 0.05.

CLOUDINESS FOR ASOS STATIONS DIFFERS FROM THE NON-ASOS OBSERVATION TAKEN BY A HUMAN OBSERVER. ASOS STATION CLOUDINESS IS BASED ON TIME-AVERAGED CEILOMETER DATA FOR CLOUDS AT OR BELOW 12,000 FEET

CLEAR INDICATES 0 - 2 OKTAS, PARTLY CLOUDY INDICATES 3 - 6 OKTAS, AND CLOUDY INDICATES 7 OR 8 OKTAS.

GENERAL CONTINUED:

WIND DIRECTION IS RECORDED IN TENS OF DEGREES (2 DIGITS) CLOCKWISE FROM TRUE NORTH. "00" INDICATES CALM. "36" INDICATES TRUE NORTH.

RESULTANT WIND IS THE VECTOR AVERAGE OF THE SPEED AND DIRECTION.

AVERAGE TEMPERATURE IS THE SUM OF THE MEAN DAILY MAXIMUM AND MINIMUM TEMPERATURE DIVIDED BY 2.

SNOWFALL DATA COMPRISE ALL FORMS OF FROZEN

PRECIPITATION, INCLUDING HAIL.

A HEATING (COOLING) DEGREE DAY IS THE DIFFERENCE BETWEEN THE AVERAGE DAILY TEMPERATURE AND 65 F.

DRY BULB IS THE TEMPERATURE OF THE AMBIENT AIR.

DEW POINT IS THE TEMPERATURE TO WHICH THE AIR MUST BE COOLED TO ACHIEVE 100 PERCENT RELATIVE HUMIDITY.

WET BULB IS THE TEMPERATURE THE AIR WOULD HAVE IF THE MOISTURE CONTENT WAS INCREASED TO 100 PERCENT RELATIVE HUMIDITY.

ON JULY 1, 1996, THE NATIONAL WEATHER SERVICE BEGAN USING THE "METAR" OBSERVATION CODE THAT WAS ALREADY EMPLOYED BY MOST OTHER NATIONS OF THE WORLD. THE MOST NOTICEABLE DIFFERENCE IN THIS ANNUAL PUBLICATION WILL BE THE CHANGE IN UNITS FROM TENTHS TO EIGHTHS(OKTAS) FOR REPORTING THE AMOUNT OF SKY COVER.

STATION HISTORY STOPPED WITH THE 2009 ANNUAL. IF YOU NEED STATION HISTORY INFORMATION GO TO "Historical Observing Metadata Repository", URL IS:

<http://www.ncdc.noaa.gov/homr/>

SNOWFALL STOPPED MONTH & YEAR INDICATED ABOVE. NO FURTHER YEARS INCLUDED UNLESS RESTARTED.

### NOTE:

The "Period of Record:(POR)" for all "averages" is based on "Summary of the Day First Order Station" and "Cooperative Summary of the Day" archives.

The 2012 Annual Publications were reproduced on 6/05/13 to correct two problems that occurred when the Publications were first produced on 02/28/13.

- 1) A small number of stations did not correctly show number of days with thunderstorms and heavy fog.
- 2) Climate Normals in the Annual Publications were based on a first edition of the 1981-2010 Normals release. With the release of Service Pack 1 (SP1) new normals for 83 stations are available and now included. Additional information on SP1 is available at:  
<http://www1.ncdc.noaa.gov/pub/data/normals/1981-2010/status.txt>.

# 2012

## LOS ANGELES

### Downtown L.A./USC Campus (KCQT)

The climate of Los Angeles is normally pleasant and mild through the year. The Pacific Ocean is the primary moderating influence. The coastal mountain ranges lying along the north and east sides of the Los Angeles coastal basin act as a buffer against extremes of summer heat and winter cold occurring in desert and plateau regions in the interior. A variable balance between mild sea breezes, and either hot or cold winds from the interior, results in some variety in weather conditions, but temperature and humidity are usually well within the limits of human comfort. An important, and somewhat unusual, aspect of the climate of the Los Angeles metropolitan area is the pronounced difference in temperature, humidity, cloudiness, fog, rain, and sunshine over fairly short distances.

These differences are closely related to the distance from, and elevation above, the Pacific Ocean. Both high and low temperatures become more extreme and the average relative humidity becomes lower as one goes inland and up foothill slopes. Relative humidity is frequently high near the coast, but may be quite low along the foothills. During periods of high temperatures, the relative humidity is usually below normal so that discomfort is rare, except for infrequent periods when high temperatures and high humidities occur together.

Like other Pacific Coast areas, most rainfall comes during the winter with nearly 85 percent of the annual total occurring from November through March, while summers are practically rainless. As in many semi-arid regions, there is a marked variability in monthly and seasonal totals. Precipitation generally increases with distance from the ocean, from a yearly total of around 12 inches in coastal sections to the south of the city to over 20 inches in foothill areas. Destructive flash floods occasionally develop in and below some mountain canyons. Snow is often visible on nearby mountains in the winter, but is extremely rare in the coastal basin. Thunderstorms are infrequent.

Prevailing winds are from the west during the spring, summer, and early autumn, with northeasterly wind predominating the remainder of the year. At times, the lack of air movement, combined with a frequent and persistent temperature inversion, is associated with concentrations of air pollution in the Los Angeles coastal basin and some adjacent areas. In fall, winter, and early spring months, occasional foehn-like descending Santa Ana winds come from the northeast over ridges and through passes in the coastal mountains. These Santa Ana winds may pick up considerable amounts of dust and reach speeds of 35 to 50 mph in north and east sections of the city, with higher speeds in outlying areas to the north and east, but rarely reach coastal portions of the city.

Sunshine, fog, and clouds depend a great deal on topography and distance from the ocean. Low clouds are common at night and in the morning along the coast during spring and summer, but form later and clear earlier near the foothills so that annual cloudiness and fog frequencies are greatest near the ocean, and sunshine totals are highest on the inland side of the city. The sun shines about 75 percent of daytime hours at the Civic Center. Light fog may accompany the usual night and morning low clouds, but dense fog is more likely to occur during the night and early morning hours of the winter months.

# Station History

LOS ANGELES, CA

NAME	Begin Date	End Date	Latitude	Longitude	Elevation Feet	Relocation	Platform
LOS ANGELES CVC CTR2	1964-07-13	1978-10-01	34° 1'	-118° 13'	257		COOP
LOS ANGELES DOWNTOWN USC CAMPUS	2010-11-02	2012-08-22	34° 3'	-118° 14'	230		ASOS, COOP
LOS ANGELES WBO	1891-01-01	1931-01-01	34° 3'	-118° 15'			WXSVC
LOS ANGELES DOWNTOWN USC CAMPUS	2012-08-22	Present	34° 1'	-118° 17'	179		ASOS, COOP
LOS ANGELES WBO	1931-01-01	1940-01-01	34° 3'	-118° 15'	361		COOP, WXSVC
LOS ANGELES WBO	1889-01-01	1891-01-01	34° 3'	-118° 15'			MILITARY
LOS ANGELES WBO	1964-07-13	1964-07-31	34° 3'	-118° 13'	312		COOP, WXSVC
LOS ANGELES CIVIC CENTER	1964-07-13	1985-11-21	34° 3'	-118° 13'	270	.25 MI SE	COOP
LOS ANGELES DOWNTOWN USC CAMPUS	2005-07-06	2007-07-07	34° 3'	-118° 14'	230		ASOS, COOP
LOS ANGELES WBO	1940-01-01	1964-06-30	34° 3'	-118° 13'	312		COOP, WXSVC
LOS ANGELES DOWNTOWN USC CAMPUS	1999-06-24	2005-07-06	34° 3'	-118° 14'	230	3.5 MI SW	ASOS, COOP
LOS ANGELES DOWNTOWN USC CAMPUS	2007-07-07	2010-11-02	34° 1'	-118° 17'	171		ASOS, COOP
LOS ANGELES WBO	1877-06-01	1889-01-01	33° 3'	-118° 13'			MILITARY
LOS ANGELES WB CITY	1964-06-30	1964-07-13	34° 3'	-118° 13'	312		COOP, WXSVC
LOS ANGELES CIVIC CENTER	1985-11-21	1999-06-24	34° 3'	-118° 13'	270		COOP

# Element History

Element	Begin Date	End Date	Frequency	Time Of Observation	Equipment *	Equipment * Modifications	Equipment Exposure
PRECIP	1931-01-01	1964-07-13	DAILY	2400			
TEMP	1964-07-13	1995-07-01	DAILY	2400	HYGR		ROOF
TEMP	1995-07-01	1999-06-24	DAILY	2400	HYGR		ROOF
PRECIP	2005-07-06	2011-06-07	DAILY	2400	PCPNX		
PRECIP	2002-03-01	2005-07-06	HOURLY	2400	AHTB	RCRD;HTD	
TEMP	2005-07-06	2011-06-07	DAILY	2400	ATEMP		
TEMP	2005-07-06	2011-06-07	DAILY	0500	ATEMP		
TEMP	2011-06-07	Present	DAILY	0500	ATEMP		
PRECIP	1964-07-13	1995-07-01	DAILY	2400	TB	RCRD	ROOF
PRECIP	2002-03-01	2005-07-06	DAILY	2400	PCPNX		
TEMP	2002-03-01	2005-07-06	DAILY	2400	ATEMP		
PRECIP	2011-06-07	Present	HOURLY	2400	AWPAG	RCRD;HTD	
TEMP	2011-06-07	Present	DAILY	2400	ATEMP		
PRECIP	1964-07-13	1995-07-01	HOURLY	2400			
TEMP	1931-01-01	1964-07-13	DAILY	2400			
PRECIP	1995-07-01	1999-06-24	HOURLY	2400	TB	RCRD	ROOF
PRECIP	2005-07-06	2011-06-07	DAILY	0500	PCPNX		
PRECIP	2011-06-07	Present	DAILY	2400	PCPNX		
TEMP	1877-06-01	1931-01-01	DAILY	2400			
PRECIP	1877-06-01	1931-01-01	DAILY	2400			
PRECIP	1995-07-01	1999-06-24	DAILY	2400	TB	RCRD	ROOF
PRECIP	2005-07-06	2011-06-07	HOURLY	2400	AHTB	RCRD;HTD	
PRECIP	1931-01-01	1964-07-13	HOURLY	2400			
PRECIP	1999-06-24	2002-03-01	DAILY	2400	TB	RCRD	
PRECIP	1999-06-24	2002-03-01	HOURLY	2400	TB	RCRD	
TEMP	1999-06-24	2002-03-01	DAILY	2400	HYGR		
PRECIP	2005-07-06	2011-06-07	HOURLY	0500	AHTB	RCRD;HTD	
PRECIP	2011-06-07	Present	HOURLY	0500	AWPAG	RCRD;HTD	
PRECIP	2011-06-07	Present	DAILY	0500	PCPNX		

\* For explanation of codes and abbreviations see Station Metadata link below.

Other Station Information can be found at:

ASOS Implementation by NWS: <http://www.nws.noaa.gov/ops2/Surface/asosimplementation.htm>

Station Metadata website: <http://www.ncdc.noaa.gov/homr>

INQUIRES/COMMENTS CALL: (828) 271-4800, option 2

Fax Number : (828) 271-4876

TDD : (828) 271-4010

Email : [ncdc.orders@noaa.gov](mailto:ncdc.orders@noaa.gov)

NOAA/National Climatic Data Center

Attn: User Engagement & Services Branch

151 Patton Avenue

Asheville, NC 28801-5001

Visit our Web Site for other weather data: [www.ncdc.noaa.gov](http://www.ncdc.noaa.gov)