

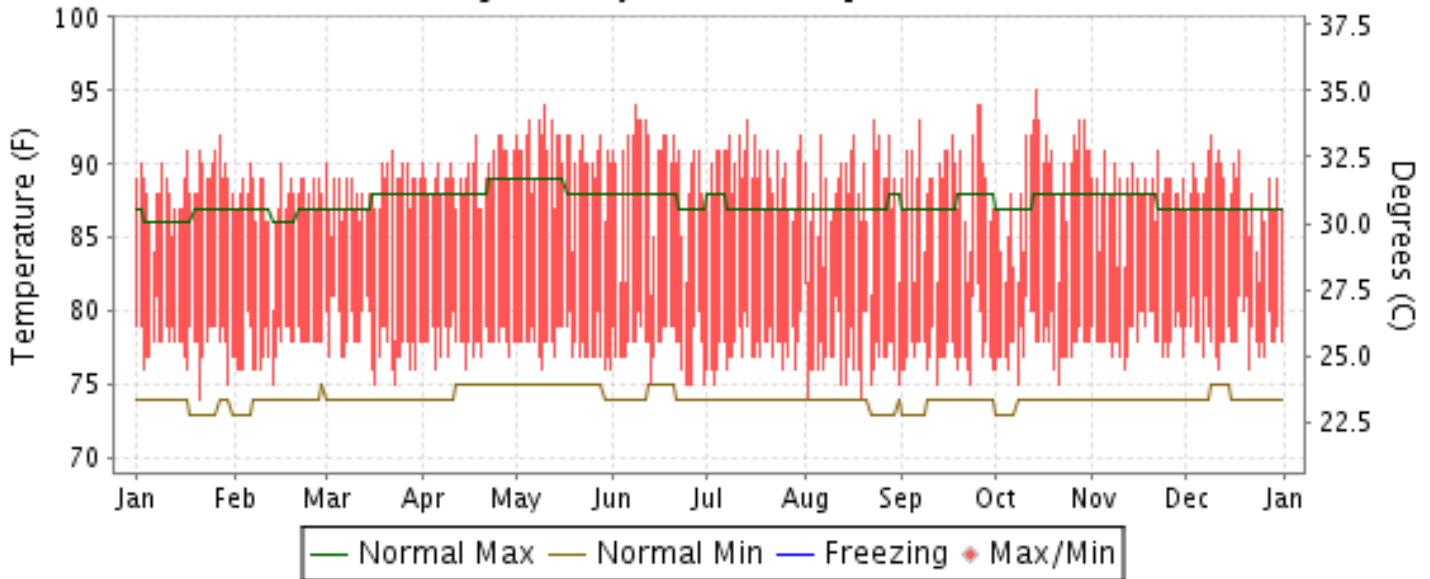


# 2012 LOCAL CLIMATOLOGICAL DATA ANNUAL SUMMARY WITH COMPARATIVE DATA

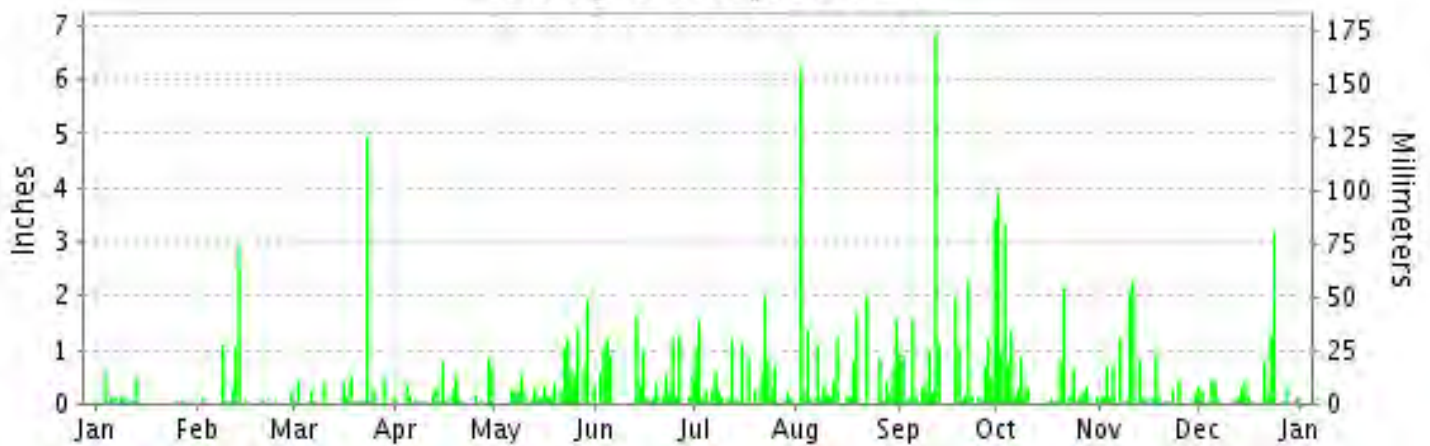
ISSN 0198-4438

## YAP ISLAND, PACIFIC (PTYA)

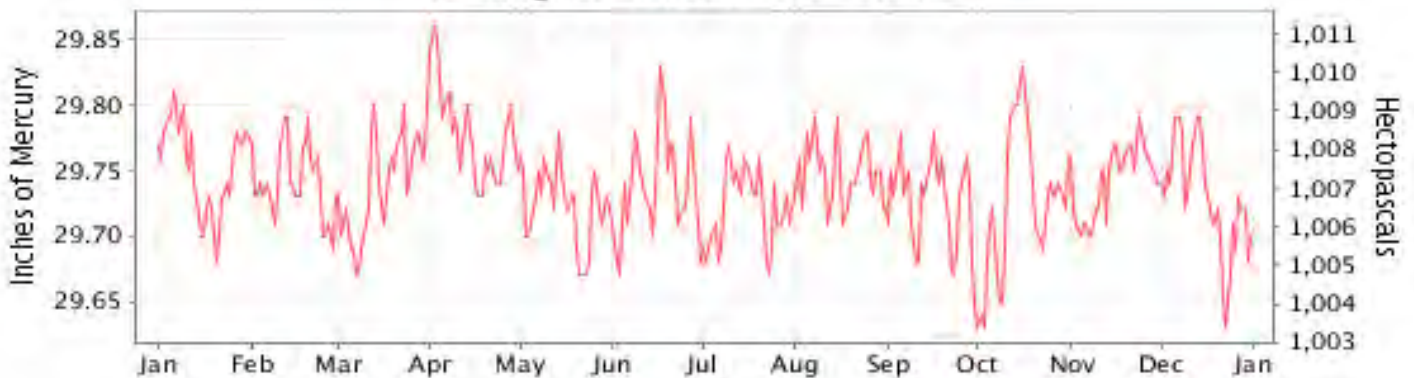
### Daily Max/Min Temperature



### Daily Precipitation



### Daily Station Pressure



I CERTIFY THAT THIS IS AN OFFICIAL PUBLICATION OF THE NATIONAL OCEANIC AND ATMOSPHERIC ADMINISTRATION, AND IS COMPILED FROM RECORDS ON FILE AT THE NATIONAL CLIMATIC DATA CENTER.

NATIONAL OCEANIC AND ATMOSPHERIC ADMINISTRATION

NATIONAL ENVIRONMENTAL SATELLITE, DATA AND INFORMATION SERVICE

NATIONAL CLIMATIC DATA CENTER ASHEVILLE, NORTH CAROLINA

*Thomas R. Karl*  
DIRECTOR  
NATIONAL CLIMATIC DATA CENTER

# METEOROLOGICAL DATA FOR 2012

## YAP ISLAND (PTYA)

LATITUDE: 9° 28'N      LONGITUDE: 138° 4'E      ELEVATION (FT): GRND: 44 BARO: 47      TIME ZONE: 150 E MER (UTC 10)      WBAN: 40308

ELEMENT		JAN	FEB	MAR	APR	MAY	JUN	JUL	AUG	SEP	OCT	NOV	DEC	YEAR	
TEMPERATURE °F	MEAN DAILY MAXIMUM	88.6	87.7	88.0	89.4	90.6	89.4	89.7	88.1	88.6	88.8	88.1	88.1	88.8	
	HIGHEST DAILY MAXIMUM	92	90	91	92	94	94	93	93	94	95	91	92	95	
	DATE OF OCCURRENCE	27	16+	22	26+	10	08	14	23	26+	14	22+	09	OCT 14	
	MEAN DAILY MINIMUM	77.9	77.6	78.0	78.0	77.8	77.6	77.5	77.1	77.4	77.7	78.3	78.5	77.8	
	LOWEST DAILY MINIMUM	74	75	75	76	76	75	75	74	75	75	76	76	74	
	DATE OF OCCURRENCE	21	13	23+	15+	31+	30+	03	19+	23+	21+	11	21+	AUG 19+	
	AVERAGE DRY BULB	83.3	82.7	83.0	83.7	84.2	83.5	83.6	82.6	83.0	83.3	83.2	83.3	83.3	
	MEAN WET BULB	76.5	76.4	76.7	77.5	78.4	77.8	77.9	77.4	77.9	78.2	78.2	77.7	77.6	
	MEAN DEW POINT	74.0	73.9	74.4	75.4	76.4	75.8	76.0	75.6	76.1	76.4	76.3	75.8	75.5	
	NUMBER OF DAYS WITH:														
	MAXIMUM >= 90°	9	2	6	13	25	21	17	11	13	17	4	8	146	
	MAXIMUM <= 32°	0	0	0	0	0	0	0	0	0	0	0	0	0	
MINIMUM <= 32°	0	0	0	0	0	0	0	0	0	0	0	0	0		
MINIMUM <= 0°	0	0	0	0	0	0	0	0	0	0	0	0	0		
H/C	HEATING DEGREE DAYS	0	0	0	0	0	0	0	0	0	0	0	0	0	
	COOLING DEGREE DAYS	573	521	564	570	604	564	587	552	549	578	553	576	6791	
RH	MEAN (PERCENT)	77	77	78	80	80	81	82	82	83	83	82	81	81	
	HOUR 04 LST	82	84	85	89	89	88	89	87	90	89	89	86	87	
	HOUR 10 LST	67	68	69	68	71	72	73	75	76	75	73	73	72	
	HOUR 16 LST	73	74	74	74	74	76	77	80	79	78	79	79	76	
	HOUR 22 LST	82	82	83	86	86	86	87	87	87	87	87	85	85	
W/O	NUMBER OF DAYS WITH:														
	HEAVY FOG(VISBY <= 1/4 MI)	0	0	0	0	0	0	0	0	0	0	0	0	0	
	THUNDERSTORMS	0	0	0	0	2	0	2	0	2	5	2	1	14	
PR	MEAN STATION PRESS. (IN.)	29.75	29.74	29.74	29.78	29.72	29.74	29.72	29.75	29.73	29.72	29.74	29.73	29.74	
	MEAN SEA-LEVEL PRESS. (IN.)	29.83	29.82	29.82	29.85	29.80	29.81	29.79	29.82	29.80	29.80	29.82	29.80	29.81	
WINDS	RESULTANT SPEED (MPH)	8.6	9.3	9.6	6.8	0.7	1.4	1.2	3.8	1.6	1.5	7.1	8.9	3.7	
	RES. DIR. (TENS OF DEGS.)	07	07	07	07	14	15	14	25	26	21	07	08	08	
	MEAN SPEED (MPH)	10.1	10.7	10.9	9.2	6.8	7.8	6.9	8.2	7.5	9.2	9.2	10.3	8.9	
	PREVAIL.DIR.(TENS OF DEGS.)	07	07	07	06	10	15	09	25	25	26	06	07	07	
	MAXIMUM 2-MINUTE WIND														
	SPEED (MPH)	20	17	21	18	16	21	17	17	17	23	21	23	23	
	DIR. (TENS OF DEGS.)	10	08	06	08	23	11	15	26	33	25	05	05	05	
	DATE OF OCCURRENCE	06	29	16	14	26	19	17	19	30	04	30	22	DEC 22	
	MAXIMUM 3-SECOND WIND:														
	SPEED (MPH)	36	35	37	32	35	39	31	37	35	46	32	39	46	
DIR. (TENS OF DEGS.)	05	09	05	09	23	27	27	27	27	27	05	05	27		
DATE OF OCCURRENCE	13	12	16	20	24	25	30	03	22	03	02	21	OCT 03		
PRECIPITATION	WATER EQUIVALENT:														
	TOTAL (IN.)	2.11	6.09	8.43	5.00	11.14	11.70	12.74	19.89	25.20	17.08	10.67	8.68	138.73	
	GREATEST 24-HOUR (IN.)	0.57	2.94	4.94	0.84	1.91	1.65	1.99	6.21	6.86	3.90	2.28	3.19	6.86	
	DATE OF OCCURRENCE	03	13	23	29	29	13	22	02	12	01	11	24	SEP 12	
	NUMBER OF DAYS WITH:														
PRECIPITATION 0.01	14	16	21	22	24	23	28	25	26	24	24	25	272		
PRECIPITATION 0.10	6	7	11	11	21	18	18	19	20	19	14	14	178		
PRECIPITATION 1.00	0	3	1	0	4	5	5	7	8	4	3	2	42		
SNOWFALL	SNOW,ICE PELLETS,HAIL	0.0	0.0	0.0	0.0	0.0	0.0	0.0	0.0	0.0	0.0	0.0	0.0	0.0	
	TOTAL (IN.)	0.0	0.0	0.0	0.0	0.0	0.0	0.0	0.0	0.0	0.0	0.0	0.0	0.0	
	GREATEST 24-HOUR (IN.)														
	DATE OF OCCURRENCE	0	0	0	0	0	0	0	0	0	0	0	0	0	
	MAXIMUM SNOW DEPTH (IN.)														
DATE OF OCCURRENCE															
NUMBER OF DAYS WITH:															
SNOWFALL >= 1.0	0	0	0	0	0	0	0	0	0	0	0	0	0		

# NORMALS, MEANS, AND EXTREMES YAP ISLAND (PTYA)

**LATITUDE:** 9° 28'N      **LONGITUDE:** 138° 4'E      **ELEVATION (FT):** GRND: 44 BARO: 47      **TIME ZONE:** 150 E MER (UTC 10)      **WBAN: 40308**

	ELEMENT	POR	JAN	FEB	MAR	APR	MAY	JUN	JUL	AUG	SEP	OCT	NOV	DEC	YEAR
<b>TEMPERATURE °F</b>	NORMAL DAILY MAXIMUM	30	86.9	87.0	87.7	88.5	88.7	88.0	87.5	87.2	87.6	88.1	88.0	87.3	87.7
	MEAN DAILY MAXIMUM	61	86.3	86.5	87.1	88.0	88.2	87.8	87.3	87.2	87.5	87.8	87.7	86.9	87.4
	HIGHEST DAILY MAXIMUM	64	94	96	92	97	95	95	96	93	96	96	94	94	97
	YEAR OF OCCURRENCE		2011	2011	2010	1951	2011	2010	1950	2012	2010	2011	2011	2010	APR 1951
	MEAN OF EXTREME MAXS.	61	88.5	88.7	89.2	90.0	90.5	90.4	90.1	90.1	90.4	90.5	90.2	89.2	89.8
	NORMAL DAILY MINIMUM	30	77.5	77.3	77.5	78.2	78.7	77.9	77.6	77.5	77.5	77.6	77.8	78.0	77.8
	MEAN DAILY MINIMUM	61	74.5	74.4	74.7	75.3	75.5	74.9	74.5	74.4	74.4	74.5	74.8	75.0	74.7
	LOWEST DAILY MINIMUM	64	67	66	64	66	62	65	66	65	66	66	66	63	65
	YEAR OF OCCURRENCE		1999	2003	1993	2004	2004	1975	2001	1998	2000	2000	1999	1973	MAY 2004
	MEAN OF EXTREME MINS.	61	71.0	71.2	71.1	71.5	71.7	71.8	71.1	71.0	71.3	71.4	71.3	71.4	71.3
	NORMAL DRY BULB	30	82.2	82.2	82.6	83.4	83.7	83.0	82.5	82.4	82.6	82.8	82.9	82.6	82.7
	MEAN DRY BULB	61	80.4	80.5	80.9	81.6	81.8	81.3	80.9	80.8	80.9	81.2	81.3	80.9	81.0
	MEAN WET BULB	29	76.1	75.8	75.9	76.9	77.6	77.5	77.3	77.2	77.2	77.3	77.5	76.9	76.9
	MEAN DEW POINT	29	75.2	74.8	74.9	75.9	76.8	76.8	76.6	76.4	76.4	76.7	76.8	76.1	76.1
	NORMAL NO. DAYS WITH: MAXIMUM >= 90	30	0.2	0.1	0.9	3.4	6.1	3.7	2.2	1.9	2.8	3.6	2.1	0.5	27.5
	MAXIMUM <= 32	30	0.0	0.0	0.0	0.0	0.0	0.0	0.0	0.0	0.0	0.0	0.0	0.0	0.0
MINIMUM <= 32	30	0.0	0.0	0.0	0.0	0.0	0.0	0.0	0.0	0.0	0.0	0.0	0.0	0.0	
MINIMUM <= 0	30	0.0	0.0	0.0	0.0	0.0	0.0	0.0	0.0	0.0	0.0	0.0	0.0	0.0	
<b>H/C</b>	NORMAL HEATING DEG. DAYS	30	0	0	0	0	0	0	0	0	0	0	0	0	0
	NORMAL COOLING DEG. DAYS	30	533	480	546	550	580	538	544	538	526	553	537	547	6472
<b>RH</b>	NORMAL (PERCENT)	30	82	81	81	82	84	85	86	86	86	86	85	84	84
	HOURLY 04 LST	30	87	86	87	88	90	91	92	92	91	92	90	88	90
	HOURLY 10 LST	30	76	74	73	73	74	78	78	78	77	77	77	76	76
	HOURLY 16 LST	30	76	75	74	74	76	79	79	79	78	79	79	78	77
	HOURLY 22 LST	30	86	86	85	86	88	90	91	90	90	92	90	88	89
<b>S</b>	PERCENT POSSIBLE SUNSHINE	47	57	59	66	66	63	52	47	45	49	47	51	49	54
<b>W/O</b>	MEAN NO. DAYS WITH: HEAVY FOG(VISBY <= 1/4 MI)	49	0.0	0.0	0.0	0.0	0.0	0.0	0.0	0.0	0.0	0.0	0.0	0.0	0.0
	THUNDERSTORMS	61	0.5	0.3	0.3	0.8	1.5	2.0	2.2	2.2	3.0	2.6	2.4	1.6	19.4
<b>CLOUDINESS</b>	MEAN: SUNRISE-SUNSET (OKTAS)	57	6.8	6.8	6.6	6.6	6.6	7.1	7.1	7.4	7.3	7.0	6.9	6.9	6.9
	MIDNIGHT-MIDNIGHT (OKTAS)	18	6.4	6.3	6.2	5.9	6.3	6.5	6.8	7.4	7.3	6.7	6.8	6.7	6.6
	MEAN NO. DAYS WITH: CLEAR	56	0.8	0.5	0.7	0.9	0.8	0.3	0.5	0.2	0.3	0.5	0.5	0.6	6.6
	PARTLY CLOUDY	56	8.4	7.7	9.2	10.5	10.6	6.1	4.4	3.4	5.5	7.2	8.3	8.3	89.6
	CLOUDY	56	21.8	20.0	21.2	18.7	19.7	23.7	25.6	27.1	23.6	23.0	21.2	21.7	267.3
<b>PR</b>	MEAN STATION PRESSURE(IN)	29	29.76	29.77	29.77	29.76	29.75	29.75	29.74	29.74	29.74	29.74	29.72	29.73	29.75
	MEAN SEA-LEVEL PRES. (IN)	29	29.82	29.83	29.83	29.82	29.81	29.81	29.80	29.80	29.81	29.80	29.78	29.80	29.81
<b>WINDS</b>	MEAN SPEED (MPH)	29	9.8	10.0	9.9	9.1	7.6	7.4	7.3	8.0	7.3	7.0	7.9	9.0	8.4
	PREVAIL.DIR.(TENS OF DEGS)	25	06	07	07	07	09	09	25	25	25	10	07	07	07
	MAXIMUM 2-MINUTE: SPEED (MPH)	23	23	23	39	69	25	32	40	28	28	28	36	41	69
	DIR. (TENS OF DEGS)		16	06	12	01	13	02	13	08	23	23	00	26	01
	YEAR OF OCCURRENCE		2011	2009	2002	2004	2011	2004	2006	2003	2003	2006	1990	1996	APR 2004
	MAXIMUM 3-SECOND SPEED (MPH)	29	45	40	76	112	48	63	62	48	48	48	84	54	112
	DIR. (TENS OF DEGS)		09	36	14	14	14	09	23	23	09	27	05	27	14
	YEAR OF OCCURRENCE		1999	1997	2002	2004	2011	1990	2003	2005	2007	2003	2002	1993	APR 2004
<b>PRECIPITATION</b>	NORMAL (IN)	30	7.30	5.99	5.34	5.72	8.50	13.20	15.04	15.46	13.76	12.25	9.09	9.28	120.93
	MAXIMUM MONTHLY (IN)	64	23.08	14.60	16.46	18.15	22.14	32.01	34.71	29.44	25.20	22.43	20.66	26.89	34.71
	YEAR OF OCCURRENCE		1955	2009	1950	1956	2003	1982	1969	1953	2012	1992	1960	1996	JUL 1969
	MINIMUM MONTHLY (IN)	64	1.25	0.27	0.54	0.21	1.47	3.40	4.99	5.13	5.32	2.59	1.96	2.22	0.21
	YEAR OF OCCURRENCE		1983	1983	1998	1998	1993	1951	1949	1973	1987	1976	1957	1990	APR 1998
	MAXIMUM IN 24 HOURS (IN)	64	10.45	5.94	5.09	6.64	10.06	18.75	11.79	7.81	8.35	7.15	8.91	7.52	18.75
	YEAR OF OCCURRENCE		1958	1962	1963	2004	1967	1982	2003	1987	1978	2003	1960	1996	JUN 1982
	NORMAL NO. DAYS WITH: PRECIPITATION >= 0.01	30	20.8	18.4	17.7	17.8	20.7	24.2	24.1	22.6	22.1	23.1	22.2	21.6	255.3
	PRECIPITATION >= 1.00	30	2.1	1.5	1.3	1.2	2.1	3.9	4.5	5.0	5.1	3.6	2.0	2.4	34.7
<b>SNOWFALL</b>	NORMAL (IN)	30	0.0	0.0	0.0	0.0	0.0	0.0	0.0	0.0	0.0	0.0	0.0	0.0	0.0
	MAXIMUM MONTHLY (IN)	64	0.0	0.0	0.0	0.0	0.0	0.0	0.0	0.0	0.0	0.0	0.0	0.0	0.0
	YEAR OF OCCURRENCE														
	MAXIMUM IN 24 HOURS (IN)	64	0.0	0.0	0.0	0.0	0.0	0.0	0.0	0.0	0.0	0.0	0.0	0.0	0.0
	YEAR OF OCCURRENCE														
	MAXIMUM SNOW DEPTH (IN)	60	0	0	0	0	0	0	0	0	0	0	0	0	0
YEAR OF OCCURRENCE															
NORMAL NO. DAYS WITH: SNOWFALL >= 1.0	30	0.0	0.0	0.0	0.0	0.0	0.0	0.0	0.0	0.0	0.0	0.0	0.0	0.0	

**PRECIPITATION (inches) 2012 YAP ISLAND (PTYA)**

YEAR	JAN	FEB	MAR	APR	MAY	JUN	JUL	AUG	SEP	OCT	NOV	DEC	ANNUAL
1983	1.25	0.27	2.76	1.36	3.59	6.98	16.14	16.59	12.59	8.37	13.56	5.38	88.84
1984	5.33	9.59	3.90	2.21	1.77	12.38	9.59	15.33	6.41	17.29	12.03	5.44	101.27
1985	14.46	3.27	6.70	8.83	6.81	18.65	11.52	15.49	17.34	10.31	5.79	14.32	133.49
1986	7.53	10.61	10.90	6.94	9.59	13.08	15.36	11.25	12.31	7.62	14.07	5.88	125.14
1987	5.96	4.91	1.96	4.80	3.96	11.04	15.10	27.87	5.32	6.70	6.47	2.74	96.83
1988	3.68	3.63	2.80	3.93	7.25	10.49	13.79	5.35	14.60	22.12	9.02	8.94	105.60
1989	10.09	12.25	7.16	4.66	10.66	13.56	13.55	17.75	11.72	13.45	7.14	8.70	130.69
1990	6.21	2.33	3.18	5.83	12.52	22.96	12.29	22.76	14.56	7.56	9.44	2.22	121.86
1991	8.46	2.09	2.46	3.65	4.92	13.42	17.21	13.49	15.45	17.33	6.78	3.73	108.99
1992	4.20	1.50	2.97	1.31	1.48	7.59	12.98	16.21	10.32	22.43	2.77	6.22	89.98
1993	6.34	6.68	11.53	5.83	1.47	11.53	15.69	14.30	12.08	10.27	9.43	13.64	118.79
1994	8.11	3.80	3.10	11.19	10.25	14.59	14.89	11.49	15.46	3.36	2.80	9.71	108.75
1995	7.88	9.79	3.23	1.78	10.08	6.19	6.55	12.53	13.06	17.23	9.09	16.00	113.41
1996	19.65	12.86	5.56	6.79	14.78	7.43	19.65	7.74	21.16	13.29	8.43	26.89	164.23
1997	13.44	9.83	4.58	2.69	2.42	15.89	15.13	13.25	10.85	10.46	6.24	5.93	110.71
1998	4.44	1.34	0.54	0.21	2.41	17.97	12.00	12.03	18.13	16.11	7.95	7.65	100.78
1999	5.99	5.47	9.13	14.96	15.32	15.99	12.96	19.74	8.78	4.95	12.95	12.47	138.71
2000	4.49	4.64	9.77	7.39	22.01	10.10	20.43	15.40	9.14	18.01	9.98	12.29	143.65
2001	5.02	6.84	5.98	2.30	11.01	15.13	18.83	21.06	7.45	7.33	7.56	11.99	120.50
2002	4.77	6.73	5.92	5.42	4.30	24.10	19.58	25.92	17.58	13.81	6.51	5.42	140.06
2003	5.98	1.69	7.63	6.54	22.14	11.70	24.42	13.51	18.40	16.91	15.41	13.60	157.93
2004	6.44	5.47	11.01	10.33	11.29	15.04	12.93	22.44	12.01	8.27	17.77	3.98	136.98
2005	6.94	2.04	5.97	12.84	5.37	13.75	16.97	16.70	11.20	3.33	11.64	9.87	116.62
2006	4.49	3.33	4.54	3.40	8.45	9.14	13.91	18.15	18.53	7.37	4.90	19.92	116.13
2007	7.13	4.62	6.28	6.96	16.32	10.90	15.05	13.36	17.96	17.43	12.76	8.73	137.50
2008	6.63	6.45	2.68	6.74	9.69	5.24	7.70	10.62	20.68	14.14	7.82	8.32	106.71
2009	8.60	14.60	3.16	11.78	6.43	8.48	17.58	7.76	16.61	11.06	10.46	3.76	120.28
2010	5.29	2.12	4.32	7.11	2.96	9.89	17.73	17.96	10.07	17.33	8.64	6.48	109.90
2011	11.80	6.71	10.28	7.22	15.10	13.56	20.84	19.16	21.03	12.32	9.92	9.76	157.70
2012	2.11	6.09	8.43	5.00	11.14	11.70	12.74	19.89	25.20	17.08	10.67	8.68	138.73
POR= 61 YRS	7.57	5.70	5.80	6.17	9.37	12.45	14.71	15.20	13.78	12.48	9.49	9.66	122.38

WBAN : 40308

**AVERAGE TEMPERATURE (°F) 2012 YAP ISLAND (PTYA)**

YEAR	JAN	FEB	MAR	APR	MAY	JUN	JUL	AUG	SEP	OCT	NOV	DEC	ANNUAL
1983	79.3	80.0	80.4	81.0	82.2	81.8	80.8	81.0	81.1	81.8	81.3	81.5	81.0
1984	80.7	80.5	81.3	82.6	83.8	81.8	81.3	80.6	81.4	80.6	81.1	81.8	81.5
1985	80.6	81.4	81.5	81.7	82.1	81.2	80.6	80.5	81.0	81.1	81.7	81.0	81.2
1986	81.3	80.8	80.9	81.2	81.7	81.4	81.3	82.9	81.2	81.7	81.2	81.1	81.4
1987	80.4	80.3	81.0	82.2	82.4	81.9	81.5	80.5	82.4	82.0	81.9	81.8	81.5
1988	81.3	81.0	82.3	82.5	82.4	81.4	81.3	81.2	81.7	81.1	81.1	80.6	81.5
1989	80.9	80.7	80.8	81.6	81.2	80.7	80.6	80.9	80.8	80.5	81.0	80.7	80.9
1990	80.1	80.2	80.3	81.2	81.0	80.2	80.2	80.1	79.9	80.5	79.4	80.1	80.3
1991	79.4	79.5	79.2	81.2	81.4	80.4	79.9	80.1	79.5	79.4	79.9	79.6	80.0
1992	78.7	78.9	80.0	81.2	82.6	82.3	81.0	81.0	80.7	80.4	80.5	79.8	80.6
1993	78.6	78.9	78.9	80.4	82.1	81.2	80.9	79.7	79.3	80.4	80.2	79.8	80.0
1994	79.2	79.4	80.8	81.4	81.8	81.0	80.5	80.5	80.2	81.1	81.0	80.1	80.6
1995	80.2	79.6	80.7	81.5	81.4	81.0	80.8	80.5	80.4	80.0	80.5	80.5	80.6
1996	80.1	79.9	81.1	81.2	80.9	81.2	80.7	80.8	81.1	81.3	80.5	79.1	80.7
1997	79.4	79.4	79.9	81.2	82.2	80.8	80.8	80.8	81.3	81.5	81.3	81.3	80.8
1998	80.4	80.7	81.1	82.0	82.4	80.9	80.5	80.0	79.9	81.3	81.5	80.3	80.9
1999	80.0	80.0	79.8	80.2	80.8	79.0	79.8	78.6	78.3	79.2	80.7	81.1	79.8
2000	80.4	80.8	80.5	81.0	81.2	80.5	79.6	79.7	80.4	79.9	80.6	80.5	80.4
2001	80.4	80.1	80.5	82.2	81.8	80.9	79.6	80.6	81.0	81.4	80.3	80.0	80.7
2002	80.1	80.5	80.4	79.8	80.4	80.0	80.0	78.6	79.2	80.6	80.7	80.5	80.1
2003	80.5	79.0	79.9	81.9	81.5	81.0	80.0	79.7	79.5	80.1	80.9	81.3	80.4
2004	81.0	81.3	81.2	81.4	82.1	81.0	81.7	80.2	81.3	81.0	81.4	81.1	81.2
2005	80.1	80.0	81.0	80.8	81.6	81.2	80.1	79.8	80.5	81.3	81.2	80.2	80.7
2006	80.5	80.2	80.3	81.2	81.2	81.0	79.9	79.8	80.1	80.3	80.9	79.9	80.4
2007	80.0	80.3	80.8	81.1	81.0	80.8	80.4	80.5	79.5	80.7	80.3	80.9	80.5
2008	80.1	80.4	80.2	82.3	81.0	82.2	82.0	81.2	81.6	82.2	82.4	82.5	81.5
2009	81.9	81.6	82.1	82.4	83.1	82.2	82.0	84.0	83.3	84.1	83.5	83.3	82.8
2010	82.5	82.1	83.0	83.4	84.9	84.8	83.7	83.1	83.9	83.7	83.6	83.3	83.5
2011	83.1	82.9	82.7	83.6	83.3	83.2	82.5	82.9	82.9	83.1	83.2	83.1	83.0
2012	83.3	82.7	83.0	83.7	84.2	83.5	83.6	82.6	83.0	83.3	83.2	83.3	83.3
POR= 61 YRS	80.4	80.5	80.9	81.6	81.8	81.3	80.9	80.8	80.9	81.2	81.3	80.9	81.0

**HEATING DEGREE DAYS (base 65°F) 2012 YAP ISLAND (PTYA)**

YEAR	JUL	AUG	SEP	OCT	NOV	DEC	JAN	FEB	MAR	APR	MAY	JUN	TOTAL
1983-84	0	0	0	0	0	0	0	0	0	0	0	0	0
1984-85	0	0	0	0	0	0	0	0	0	0	0	0	0
1985-86	0	0	0	0	0	0	0	0	0	0	0	0	0
1986-87	0	0	0	0	0	0	0	0	0	0	0	0	0
1987-88	0	0	0	0	0	0	0	0	0	0	0	0	0
1988-89	0	0	0	0	0	0	0	0	0	0	0	0	0
1989-90	0	0	0	0	0	0	0	0	0	0	0	0	0
1990-91	0	0	0	0	0	0	0	0	0	0	0	0	0
1991-92	0	0	0	0	0	0	0	0	0	0	0	0	0
1992-93	0	0	0	0	0	0	0	0	0	0	0	0	0
1993-94	0	0	0	0	0	0	0	0	0	0	0	0	0
1994-95	0	0	0	0	0	0	0	0	0	0	0	0	0
1995-96	0	0	0	0	0	0	0	0	0	0	0	0	0
1996-97	0	0	0	0	0	0	0	0	0	0	0	0	0
1997-98	0	0	0	0	0	0	0	0	0	0	0	0	0
1998-99	0	0	0	0	0	0	0	0	0	0	0	0	0
1999-00	0	0	0	0	0	0	0	0	0	0	0	0	0
2000-01	0	0	0	0	0	0	0	0	0	0	0	0	0
2001-02	0	0	0	0	0	0	0	0	0	0	0	0	0
2002-03	0	0	0	0	0	0	0	0	0	0	0	0	0
2003-04	0	0	0	0	0	0	0	0	0	0	0	0	0
2004-05	0	0	0	0	0	0	0	0	0	0	0	0	0
2005-06	0	0	0	0	0	0	0	0	0	0	0	0	0
2006-07	0	0	0	0	0	0	0	0	0	0	0	0	0
2007-08	0	0	0	0	0	0	0	0	0	0	0	0	0
2008-09	0	0	0	0	0	0	0	0	0	0	0	0	0
2009-10	0	0	0	0	0	0	0	0	0	0	0	0	0
2010-11	0	0	0	0	0	0	0	0	0	0	0	0	0
2011-12	0	0	0	0	0	0	0	0	0	0	0	0	0
2012-	0	0	0	0	0	0	0	0	0	0	0	0	0

WBAN : 40308

**COOLING DEGREE DAYS (base 65°F) 2012 YAP ISLAND (PTYA)**

YEAR	JAN	FEB	MAR	APR	MAY	JUN	JUL	AUG	SEP	OCT	NOV	DEC	TOTAL
1983	451	426	485	484	540	510	496	506	490	530	495	519	5932
1984	495	454	514	534	591	508	511	490	500	489	491	529	6106
1985	486	465	518	506	536	494	488	485	491	506	510	504	5989
1986	516	448	498	493	525	499	512	563	492	523	492	505	6066
1987	486	437	500	521	549	513	517	491	531	533	513	528	6119
1988	513	470	544	529	546	499	516	508	510	506	488	490	6119
1989	502	447	496	504	509	478	491	499	480	486	485	496	5873
1990	473	431	481	492	502	464	479	474	454	489	438	475	5652
1991	453	413	445	493	515	473	470	476	443	454	453	463	5551
1992	433	410	474	493	552	523	502	505	476	484	470	465	5787
1993	432	397	441	469	537	491	500	461	436	482	463	468	5577
1994	448	408	494	499	528	485	486	485	463	504	487	477	5764
1995	477	415	492	502	515	487	494	489	469	470	474	488	5772
1996	472	441	506	491	498	493	496	496	492	513	471	446	5815
1997	452	410	469	494	540	481	498	498	496	517	494	514	5863
1998	484	447	506	520	546	479	487	471	454	514	503	481	5892
1999	468	425	463	461	497	425	467	431	407	448	478	506	5476
2000	484	465	487	486	511	473	460	460	469	469	473	485	5722
2001	485	428	490	522	525	485	460	492	484	516	467	472	5826
2002	475	440	483	451	484	457	471	430	434	491	477	484	5577
2003	487	397	469	512	518	486	471	461	440	474	488	512	5715
2004	504	479	510	500	538	488	523	479	494	502	499	509	6025
2005	475	428	501	479	522	491	475	464	470	513	488	478	5784
2006	486	428	479	492	507	487	424	422	437	482	484	468	5596
2007	459	434	497	489	503	481	483	487	445	495	467	499	5739
2008	473	453	478	526	502	523	535	510	505	540	533	550	6128
2009	532	470	539	532	566	522	534	597	554	600	561	578	6585
2010	551	483	565	559	623	599	587	564	575	584	566	575	6831
2011	566	507	556	565	576	554	551	563	545	567	556	570	6676
2012	573	521	564	570	604	564	587	552	549	578	553	576	6791

## SNOWFALL (inches) 2012 YAP ISLAND (PTYA)

YEAR	JUL	AUG	SEP	OCT	NOV	DEC	JAN	FEB	MAR	APR	MAY	JUN	TOTAL
1983-84	0.0	0.0	0.0	0.0	0.0	0.0	0.0	0.0	0.0	0.0	0.0	0.0	0.0
1984-85	0.0	0.0	0.0	0.0	0.0	0.0	0.0	0.0	0.0	0.0	0.0	0.0	0.0
1985-86	0.0	0.0	0.0	0.0	0.0	0.0	0.0	0.0	0.0	0.0	0.0	0.0	0.0
1986-87	0.0	0.0	0.0	0.0	0.0	0.0	0.0	0.0	0.0	0.0	0.0	0.0	0.0
1987-88	0.0	0.0	0.0	0.0	0.0	0.0	0.0	0.0	0.0	0.0	0.0	0.0	0.0
1988-89	0.0	0.0	0.0	0.0	0.0	0.0	0.0	0.0	0.0	0.0	0.0	0.0	0.0
1989-90	0.0	0.0	0.0	0.0	0.0	0.0	0.0	0.0	0.0	0.0	0.0	0.0	0.0
1990-91	0.0	0.0	0.0	0.0	0.0	0.0	0.0	0.0	0.0	0.0	0.0	0.0	0.0
1991-92	0.0	0.0	0.0	0.0	0.0	0.0	0.0	0.0	0.0	0.0	0.0	0.0	0.0
1992-93	0.0	0.0	0.0	0.0	0.0	0.0	0.0	0.0	0.0	0.0	0.0	0.0	0.0
1993-94	0.0	0.0	0.0	0.0	0.0	0.0	0.0	0.0	0.0	0.0	0.0	0.0	0.0
1994-95	0.0	0.0	0.0	0.0	0.0	0.0	0.0	0.0	0.0	0.0	0.0	0.0	0.0
1995-96	0.0	0.0	0.0	0.0	0.0	0.0	0.0	0.0	0.0	0.0	0.0	0.0	0.0
1996-97	0.0	0.0	0.0	0.0	0.0	0.0	0.0	0.0	0.0	0.0	0.0	0.0	0.0
1997-98	0.0	0.0	0.0	0.0	0.0	0.0	0.0	0.0	0.0	0.0	0.0	0.0	0.0
1998-99	0.0	0.0	0.0	0.0	0.0	0.0	0.0	0.0	0.0	0.0	0.0	0.0	0.0
1999-00	0.0	0.0	0.0	0.0	0.0	0.0	0.0	0.0	0.0	0.0	0.0	0.0	0.0
2000-01	0.0	0.0	0.0	0.0	0.0	0.0	0.0	0.0	0.0	0.0	0.0	0.0	0.0
2001-02	0.0	0.0	0.0	0.0	0.0	0.0	0.0	0.0	0.0	0.0	0.0	0.0	0.0
2002-03	0.0	0.0	0.0	0.0	0.0	0.0	0.0	0.0	0.0	0.0	0.0	0.0	0.0
2003-04	0.0	0.0	0.0	0.0	0.0	0.0	0.0	0.0	0.0	0.0	0.0	0.0	0.0
2004-05	0.0	0.0	0.0	0.0	0.0	0.0	0.0	0.0	0.0	0.0	0.0	0.0	0.0
2005-06	0.0	0.0	0.0	0.0	0.0	0.0	0.0	0.0	0.0	0.0	0.0	0.0	0.0
2006-07	0.0	0.0	0.0	0.0	0.0	0.0	0.0	0.0	0.0	0.0	0.0	0.0	0.0
2007-08	0.0	0.0	0.0	0.0	0.0	0.0	0.0	0.0	0.0	0.0	0.0	0.0	0.0
2008-09	0.0	0.0	0.0	0.0	0.0	0.0	0.0	0.0	0.0	0.0	0.0	0.0	0.0
2009-10	0.0	0.0	0.0	0.0	0.0	0.0	0.0	0.0	0.0	0.0	0.0	0.0	0.0
2010-11	0.0	0.0	0.0	0.0	0.0	0.0	0.0	0.0	0.0	0.0	0.0	0.0	0.0
2011-12	0.0	0.0	0.0	0.0	0.0	0.0	0.0	0.0	0.0	0.0	0.0	0.0	0.0
2012-	0.0	0.0	0.0	0.0	0.0	0.0	0.0	0.0	0.0	0.0	0.0	0.0	0.0
POR= 62 YRS	0.0	0.0	0.0	0.0	0.0	0.0	0.0	0.0	0.0	0.0	0.0	0.0	0.0

WBAN : 40308

### REFERENCE NOTES :

PAGE 1:  
THE TEMPERATURE GRAPH SHOWS NORMAL MAXIMUM AND NORMAL MINIMUM DAILY TEMPERATURES (SOLID CURVES) AND THE ACTUAL DAILY HIGH AND LOW TEMPERATURES (VERTICAL BARS).

PAGE 2 AND 3:

H/C INDICATES HEATING AND COOLING DEGREE DAYS.

RH INDICATES RELATIVE HUMIDITY

W/O INDICATES WEATHER AND OBSTRUCTIONS

S INDICATES SUNSHINE.

PR INDICATES PRESSURE.

CLOUDINESS ON PAGE 3 IS THE SUM OF THE CEILOMETER AND SATELLITE DATA NOT TO EXCEED EIGHT EIGHTHS(OKTAS).

GENERAL:

T INDICATES TRACE PRECIPITATION, AN AMOUNT GREATER THAN ZERO BUT LESS THAN THE LOWEST REPORTABLE VALUE.

+ INDICATES THE VALUE ALSO OCCURS ON EARLIER DATES.

BLANK ENTRIES DENOTE MISSING OR UNREPORTED DATA.

ASOS INDICATES AUTOMATED SURFACE OBSERVING SYSTEM.

PM INDICATES THE LAST DAY OF THE PREVIOUS MONTH.

POR (PERIOD OF RECORD) BEGINS WITH THE JANUARY DATA MONTH AND IS THE NUMBER OF YEARS USED TO COMPUTE THE MEAN. INDIVIDUAL MONTHS WITHIN THE POR MAY BE MISSING.

WHEN THE POR FOR A NORMAL IS LESS THAN 30 YEARS, THE NORMAL IS PROVISIONAL AND IS BASED ON THE NUMBER OF YEARS INDICATED.

0.\* OR \* INDICATES THE VALUE OR MEAN-DAYS-WITH IS BETWEEN 0.00 AND 0.05.

CLOUDINESS FOR ASOS STATIONS DIFFERS FROM THE NON-ASOS OBSERVATION TAKEN BY A HUMAN OBSERVER. ASOS STATION CLOUDINESS IS BASED ON TIME-AVERAGED CEILOMETER DATA FOR CLOUDS AT OR BELOW 12,000 FEET

CLEAR INDICATES 0 - 2 OKTAS, PARTLY CLOUDY INDICATES 3 - 6 OKTAS, AND CLOUDY INDICATES 7 OR 8 OKTAS.

GENERAL CONTINUED:

WIND DIRECTION IS RECORDED IN TENS OF DEGREES (2 DIGITS) CLOCKWISE FROM TRUE NORTH. "00" INDICATES CALM. "36" INDICATES TRUE NORTH.

RESULTANT WIND IS THE VECTOR AVERAGE OF THE SPEED AND DIRECTION.

AVERAGE TEMPERATURE IS THE SUM OF THE MEAN DAILY MAXIMUM AND MINIMUM TEMPERATURE DIVIDED BY 2.

SNOWFALL DATA COMPRISE ALL FORMS OF FROZEN

PRECIPITATION, INCLUDING HAIL.

A HEATING (COOLING) DEGREE DAY IS THE DIFFERENCE BETWEEN THE AVERAGE DAILY TEMPERATURE AND 65 F.

DRY BULB IS THE TEMPERATURE OF THE AMBIENT AIR.

DEW POINT IS THE TEMPERATURE TO WHICH THE AIR MUST BE COOLED TO ACHIEVE 100 PERCENT RELATIVE HUMIDITY.

WET BULB IS THE TEMPERATURE THE AIR WOULD HAVE IF THE MOISTURE CONTENT WAS INCREASED TO 100 PERCENT RELATIVE HUMIDITY.

ON JULY 1, 1996, THE NATIONAL WEATHER SERVICE BEGAN USING THE "METAR" OBSERVATION CODE THAT WAS ALREADY EMPLOYED BY MOST OTHER NATIONS OF THE WORLD. THE MOST NOTICEABLE DIFFERENCE IN THIS ANNUAL PUBLICATION WILL BE THE CHANGE IN UNITS FROM TENTHS TO EIGHTHS(OKTAS) FOR REPORTING THE AMOUNT OF SKY COVER.

STATION HISTORY STOPPED WITH THE 2009 ANNUAL. IF YOU NEED STATION HISTORY INFORMATION GO TO "Historical Observing Metadata Repository", URL IS:

<http://www.ncdc.noaa.gov/homr/>

SNOWFALL STOPPED MONTH & YEAR INDICATED ABOVE. NO FURTHER YEARS INCLUDED UNLESS RESTARTED.

#### NOTE:

The "Period of Record:(POR)" for all "averages" is based on "Summary of the Day First Order Station" and "Cooperative Summary of the Day" archives.

The 2012 Annual Publications were reproduced on 6/05/13 to correct two problems that occurred when the Publications were first produced on 02/28/13.

- 1) A small number of stations did not correctly show number of days with thunderstorms and heavy fog.
- 2) Climate Normals in the Annual Publications were based on a first edition of the 1981-2010 Normals release. With the release of Service Pack 1 (SP1) new normals for 83 stations are available and now included. Additional information on SP1 is available at:  
<http://www1.ncdc.noaa.gov/pub/data/normals/1981-2010/status.txt>.

# 2012 YAP ISLAND PACIFIC (PTYA)

The Yap group consists of four large islands and ten small islands surrounded by a coral reef. These islands were formed by land upheaval and are not, therefore, of volcanic or of coral origin. The soil is clay-like and contains considerable rock. The islands are mostly low, rolling grass-covered hills.

The lowlands, which occupy the southwesterly end of Yap, are covered with dense jungle growth and are marsh-like, except during the dry spells that occur from time to time, particularly during the early months of the year. The terrain around the station is level for about 1/2 mile. A ridge about 3 1/4 miles to the northwest rises 224 feet above sea level and slopes northeastward toward the highest hill on the island, elevation 585 feet. Other small hills lie approximately 3 miles northeast and 3 miles southwest of the station. Lush vegetation, interspersed with sparse pandanas and a few coconut trees, is visible in all directions. The ocean itself cannot be seen from the station, although it lies only about 3/4 of a mile away to the east and south and about 1 mile to the west.

During northern summer, the Intertropical Convergence Zone lies near Yap, particularly as it moves northward in July and southward again in October. At such times showers and light variable winds predominate, interspersed with heavier showers or thunderstorms, occasionally accompanied by strong, shifting winds. Thunderstorms are relatively infrequent, averaging two per month from August through December and fifteen for the year as a whole.

Tropical cyclones affect the area much less often than they do the Pacific further to the northwest. June to December are the months of greatest frequency. Fully-developed typhoons are uncommon near Yap. Most of them pass to the north and then move westward to northwestward away from the island.

Yap is under the influence of the northeast trade winds for eight months of the year, November through June. From July through October the prevailing wind is southwesterly, with frequent periods of calm and light variable winds. This is also the wettest season with monthly rainfall exceeding 13 inches. The nearest approach to a dry season is February through April, when the monthly rainfall is less than 7 inches.

Temperature varies much less seasonally than between day and night. Thus, the warmest and coolest months differ by less than 2 degrees in average temperature, as compared with a difference of nearly 12 degrees between the warmest and coolest times of day.

Humidity is higher and clear skies more frequent during the night and early morning than during the day. Cloudless days are rare. A common daily sequence from May through December is to have the late morning fair weather clouds build up in late afternoon into towering cumulus that give rise to evening and early morning showers. Visibility in such showers is seldom less than 5 miles.

Despite their relatively small size and low relief, the islands nevertheless appear to be large and high enough to cause local differences in temperature, wind, humidity, and, perhaps, rainfall.

# Station History

YAP ISLAND, FM

NAME	Begin Date	End Date	Latitude	Longitude	Elevation Feet	Relocation	Platform
YAP WB AIRPORT	1958-11-01	1968-03-01	9° 31'	138° 7'	59		COOP
YAP ISLAND WSO AP	1970-10-01	1982-01-01	9° 28'	138° 4'	39		COOP
YAP ISLAND WSO AP	1982-01-01	Present	9° 28'	138° 4'	44		COOP
YAP WB AIRPORT	1951-07-01	1958-11-01	9° 31'	138° 7'	49		COOP
YAP AIRFIELD WBAS	1968-03-01	1970-10-01	9° 28'	138° 4'	39		COOP

# Element History

Element	Begin Date	End Date	Frequency	Time Of Observation	Equipment *	Equipment * Modifications	Equipment Exposure
TEMP	1985-10-04	1994-11-17	DAILY	2400	HYGR		
EVAP	1951-07-01	1985-10-04	DAILY	1700			
PRECIP	1951-07-01	1985-10-04	DAILY	2400			
TEMP	1994-11-17	Present	DAILY	2400	HYGR		
PRECIP	1985-10-04	1994-11-17	HOURLY	2400	TB	RCRD	
PRECIP	1985-10-04	1994-11-17	DAILY	2400	SRG		
PRECIP	1994-11-17	Present	HOURLY	2400	TB	RCRD	
EVAP	1985-10-04	1994-11-17	DAILY	1700	MONEL (F)		
TEMP	1951-07-01	1985-10-04	DAILY	2400			
PRECIP	1994-11-17	Present	DAILY	2400	TB	RCRD	
EVAP	1994-11-17	Present	DAILY	1700	MONEL (F)		

\* For explanation of codes and abbreviations see Station Metadata link below.

Other Station Information can be found at:

ASOS Implementation by NWS: <http://www.nws.noaa.gov/ops2/Surface/asosimplementation.htm>

Station Metadata website: <http://www.ncdc.noaa.gov/homr>

INQUIRES/COMMENTS CALL: (828) 271-4800, option 2

Fax Number : (828) 271-4876

TDD : (828) 271-4010

Email : [ncdc.orders@noaa.gov](mailto:ncdc.orders@noaa.gov)

NOAA/National Climatic Data Center

Attn: User Engagement & Services Branch

151 Patton Avenue

Asheville, NC 28801-5001

Visit our Web Site for other weather data: [www.ncdc.noaa.gov](http://www.ncdc.noaa.gov)