

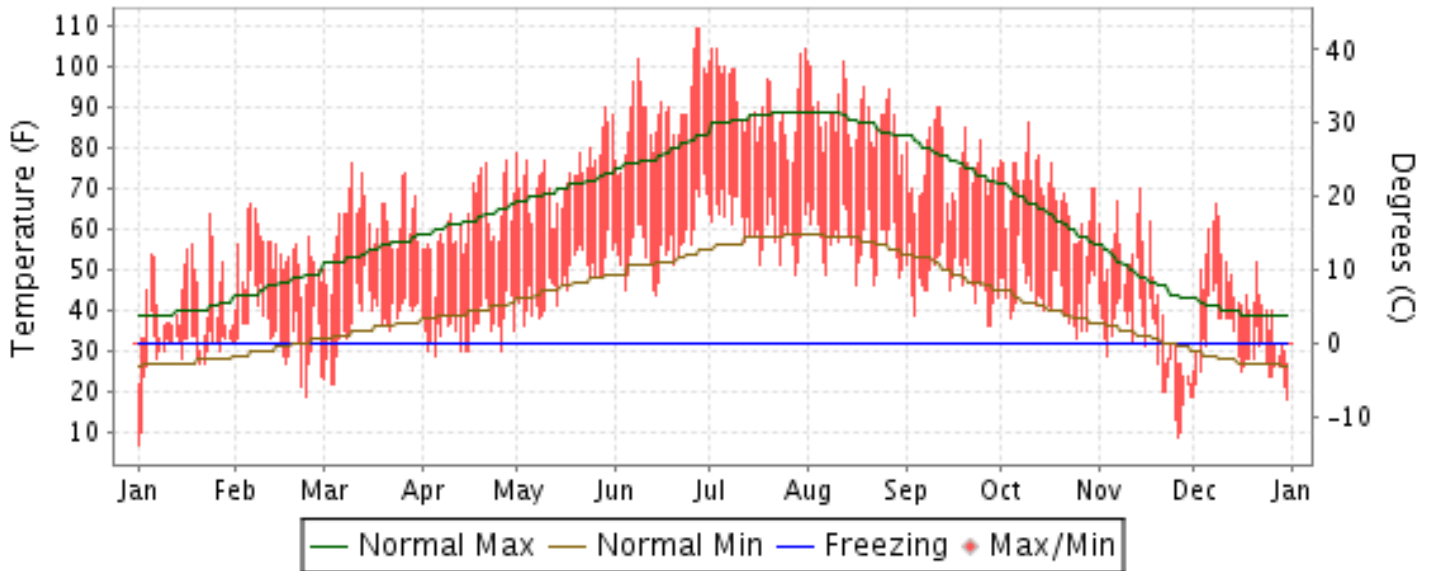


2015 LOCAL CLIMATOLOGICAL DATA ANNUAL SUMMARY WITH COMPARATIVE DATA

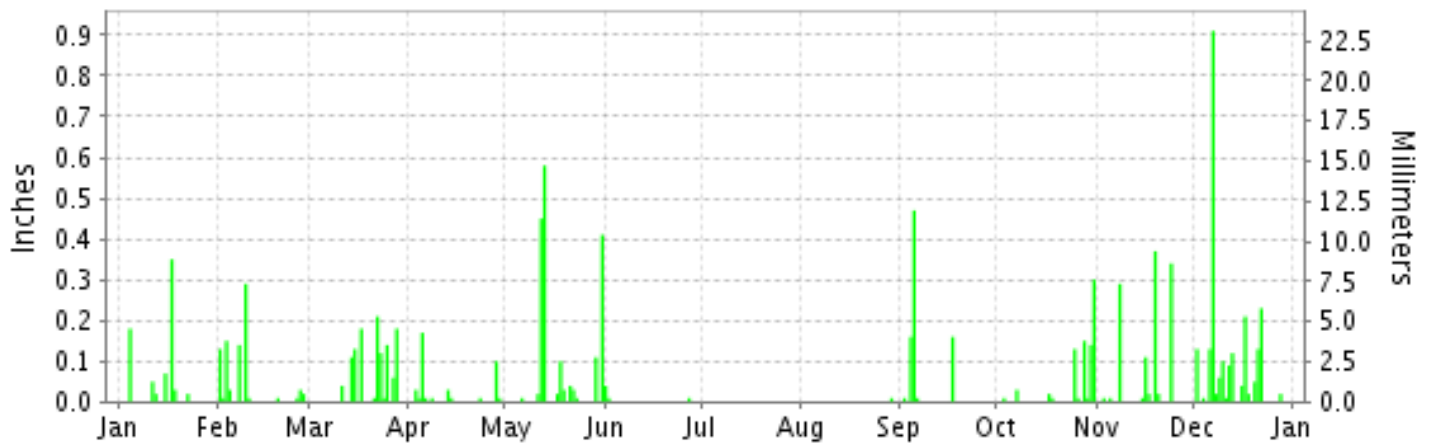
ISSN 0198-4179

PENDLETON, OREGON (KPDT)

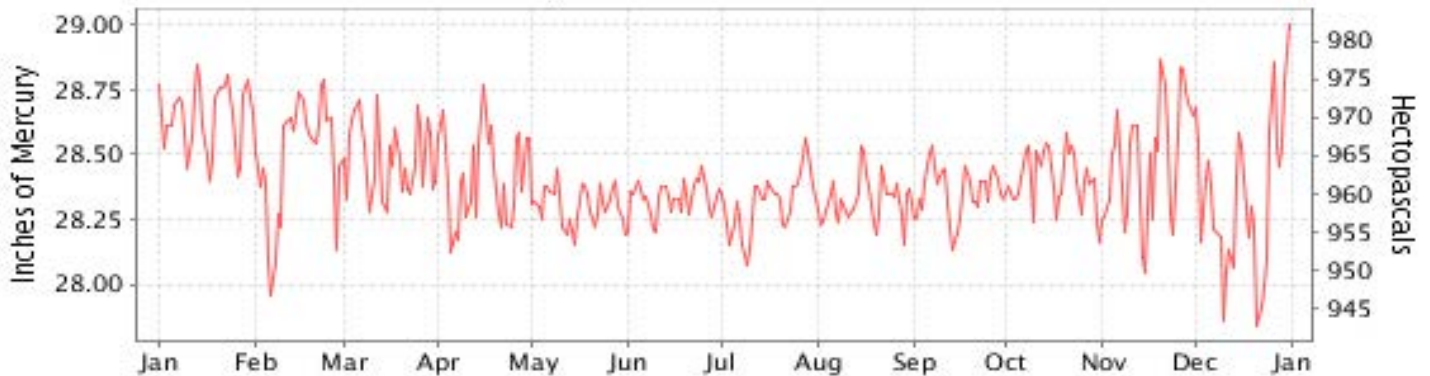
Daily Max/Min Temperature



Daily Precipitation



Daily Station Pressure



I CERTIFY THAT THIS IS AN OFFICIAL PUBLICATION OF THE NATIONAL OCEANIC AND ATMOSPHERIC ADMINISTRATION, AND IS COMPILED FROM RECORDS ON FILE AT THE NATIONAL CLIMATIC DATA CENTER.

NATIONAL OCEANIC AND ATMOSPHERIC ADMINISTRATION

NATIONAL ENVIRONMENTAL SATELLITE, DATA AND INFORMATION SERVICE

NATIONAL CENTERS for ENVIRONMENTAL INFORMATION (NCEI) ASHEVILLE, NORTH CAROLINA

Thomas R. Karl
DIRECTOR
NCEI

METEOROLOGICAL DATA FOR 2015

PENDLETON (KPDT)

LATITUDE:
45° 41'N

LONGITUDE:
118° 51'W

ELEVATION (FT):
GRND: 1486 BARO: 1516

TIME ZONE:
PACIFIC (UTC -8)

WBAN: 24155

ELEMENT		JAN	FEB	MAR	APR	MAY	JUN	JUL	AUG	SEP	OCT	NOV	DEC	YEAR	
TEMPERATURE °F	MEAN DAILY MAXIMUM	42.2	53.6	61.6	61.7	73.8	89.3	91.6	87.8	75.2	69.0	45.6	43.5	66.2	
	HIGHEST DAILY MAXIMUM	64	66	76	77	90	109	104	101	90	86	70	66	109	
	DATE OF OCCURRENCE	24	06	10	28	29	28+	31+	12+	12+	10	14	08	JUN 28+	
	MEAN DAILY MINIMUM	29.9	34.4	37.4	36.2	47.2	56.3	60.6	56.9	47.3	43.5	31.3	30.5	42.6	
	LOWEST DAILY MINIMUM	7	19	22	29	36	44	49	46	36	33	9	18	7	
	DATE OF OCCURRENCE	01	23	04+	05	03	14	28	22+	28+	25	26	31	JAN 01	
	AVERAGE DRY BULB	36.0	44.0	49.5	49.0	60.5	72.8	76.1	72.4	61.3	56.3	38.4	37.0	54.4	
	MEAN WET BULB	33.9	39.3	42.6	41.8	51.4	56.1	57.6	55.6	50.2	48.8	34.3	33.6	45.4	
	MEAN DEW POINT	31.6	34.1	34.6	32.5	43.0	41.2	41.7	40.1	39.3	42.2	29.5	29.2	36.6	
	NUMBER OF DAYS WITH:														
	MAXIMUM >= 90°	0	0	0	0	1	14	16	12	2	0	0	0	0	45
	MAXIMUM <= 32°	2	0	0	0	0	0	0	0	0	0	9	7	18	
	MINIMUM <= 32°	19	11	5	7	0	0	0	0	0	0	14	20	76	
MINIMUM <= 0°	0	0	0	0	0	0	0	0	0	0	0	0	0		
H/C	HEATING DEGREE DAYS	890	582	470	476	157	10	0	8	136	268	788	860	4645	
	COOLING DEGREE DAYS	0	0	0	0	27	253	354	242	32	4	0	0	912	
RH	MEAN (PERCENT)	87	73	61	55	57	35	32	34	48	64	74	77	58	
	HOUR 04 LST	88	81	74	74	77	58	51	48	68	77	79	81	71	
	HOUR 10 LST	82	65	50	44	43	24	25	28	37	50	68	74	49	
	HOUR 16 LST	87	65	44	38	39	20	19	21	32	54	73	75	47	
	HOUR 22 LST	89	79	71	66	68	42	37	39	56	73	79	80	65	
W/O	NUMBER OF DAYS WITH:														
	HEAVY FOG(VISBY <= 1/4 MI)	16	6	0	0	1	0	0	0	0	2	3	5	33	
	THUNDERSTORMS	0	0	0	0	4	2	1	1	0	0	0	0	8	
PR	MEAN STATION PRESS. (IN.)	28.64	28.49	28.49	28.42	28.30	28.33	28.32	28.33	28.36	28.40	28.48	28.33	28.41	
	MEAN SEA-LEVEL PRESS. (IN.)	30.28	30.10	30.10	30.02	29.88	29.89	29.87	29.88	29.93	30.00	30.10	29.96	30.00	
WINDS	RESULTANT SPEED (MPH)	0.4	1.6	2.6	4.1	1.9	2.8	4.8	3.0	2.2	2.2	3.8	4.1	2.6	
	RES. DIR. (TENS OF DEGS.)	25	24	24	25	27	28	26	27	23	22	23	22	25	
	MEAN SPEED (MPH)	4.9	7.7	8.4	9.2	7.7	8.2	9.5	8.7	7.7	7.3	7.7	9.3	8.0	
	PREVAIL.DIR.(TENS OF DEGS.)	31	14	15	26	29	27	27	15	15	15	15	16	27	
	MAXIMUM 2-MINUTE WIND														
	SPEED (MPH)	29	51	43	37	52	38	32	39	33	39	55	55	55	
	DIR. (TENS OF DEGS.)	29	20	27	26	25	19	26	28	27	25	25	25	25	
	DATE OF OCCURRENCE	18	06	24	21	31	28	15	29	13	30	17	21	DEC 21	
	MAXIMUM 3-SECOND WIND:														
	SPEED (MPH)	36	60	53	46	68	48	40	45	40	49	67	69	69	
DIR. (TENS OF DEGS.)	27	21	26	26	24	19	27	28	27	26	24	24	24		
DATE OF OCCURRENCE	16	06	24	13	31	28	15	29	13	30	17	21	DEC 21		
PRECIPITATION	WATER EQUIVALENT:														
	TOTAL (IN.)	0.72	0.83	1.19	0.39	1.81	0.06	T	0.01	0.81	0.81	1.18	2.28	10.09	
	GREATEST 24-HOUR (IN.)	0.38	0.30	0.30	0.18	1.03	0.05	T	0.01	0.63	0.39	0.39	1.04	1.04	
	DATE OF OCCURRENCE	17-18	09-10	22-23	05-06	12-13	01-02	13+	29	04-05	30-31	19-20	06-07	DEC 06-07	
	NUMBER OF DAYS WITH:														
PRECIPITATION 0.01	7	11	11	10	12	3	0	1	5	10	9	17	96		
PRECIPITATION 0.10	2	4	7	2	5	0	0	0	3	4	4	8	39		
PRECIPITATION 1.00	0	0	0	0	0	0	0	0	0	0	0	0	0		
SNOWFALL	SNOW,ICE PELLETS,HAIL	0.4	0.0	0.0	T	0.0	0.0	0.0	0.0	0.0	0.0	1.6	2.5	4.5	
	TOTAL (IN.)	0.4	0.0	0.0	T	0.0	0.0	0.0	0.0	0.0	0.0	1.5	0.8	1.5	
	GREATEST 24-HOUR (IN.)	12			14+							24	22+	NOV 24	
	DATE OF OCCURRENCE	1	0	0	0	0	0	0	0	0	0	2	2	2	
	MAXIMUM SNOW DEPTH (IN.)	02+										25+	03+	DEC 03+	
	DATE OF OCCURRENCE														
NUMBER OF DAYS WITH:															
SNOWFALL >= 1.0	0	0	0	0	0	0	0	0	0	0	1	0	1		

NORMALS, MEANS, AND EXTREMES PENDLETON (KPDT)

LATITUDE: 45° 41'N **LONGITUDE:** 118° 51'W **ELEVATION (FT):** GRND: 1486 BARO: 1516 **TIME ZONE:** PACIFIC (UTC -8) **WBAN: 24155**

	ELEMENT	POR	JAN	FEB	MAR	APR	MAY	JUN	JUL	AUG	SEP	OCT	NOV	DEC	YEAR	
TEMPERATURE °F	NORMAL DAILY MAXIMUM	30	41.8	46.8	55.2	62.1	70.0	78.2	88.0	86.8	77.4	63.7	49.2	39.5	63.2	
	MEAN DAILY MAXIMUM	88	39.6	45.2	54.7	61.7	70.8	78.1	88.6	86.6	76.9	64.0	48.4	41.3	63.0	
	HIGHEST DAILY MAXIMUM	80	70	75	80	91	100	109	110	113	102	92	80	67	113	
	YEAR OF OCCURRENCE		1995	1996	2004	1977	1986	2015	1939	1961	1955	1980	1999	1980	1980	AUG 1961
	MEAN OF EXTREME MAXS.	88	58.8	62.0	68.5	77.7	88.2	95.0	101.7	100.0	92.3	80.0	66.2	59.6	79.2	
	NORMAL DAILY MINIMUM	30	28.8	30.3	35.0	39.2	45.6	51.5	57.2	56.8	49.4	40.1	33.4	27.0	41.2	
	MEAN DAILY MINIMUM	88	26.4	29.6	34.9	39.0	45.8	51.6	57.6	56.6	49.3	40.7	32.8	28.7	41.1	
	LOWEST DAILY MINIMUM	80	-22	-18	1	18	25	35	41	40	30	11	-12	-19	-22	
	YEAR OF OCCURRENCE		1957	1950	1993	1936	1954	1991	2012	1980	2000	1935	1985	1983	1983	JAN 1957
	MEAN OF EXTREME MINS.	88	8.1	15.4	23.9	29.4	34.6	42.2	47.5	47.3	38.6	28.2	19.7	11.6	28.9	
	NORMAL DRY BULB	30	35.3	38.5	45.1	50.7	57.8	64.9	72.6	71.8	63.4	51.9	41.3	33.2	52.2	
	MEAN DRY BULB	88	33.0	37.4	44.8	50.4	58.3	64.9	73.1	71.6	63.1	52.4	40.6	35.0	52.1	
	MEAN WET BULB	32	30.9	32.9	37.4	41.0	46.3	50.4	52.6	52.2	48.1	42.5	35.7	29.8	41.7	
	MEAN DEW POINT	32	29.7	31.1	35.1	38.3	43.6	46.6	48.2	47.4	44.0	39.2	34.0	28.6	38.8	
	NORMAL NO. DAYS WITH: MAXIMUM >= 90	30	0.0	0.0	0.0	0.0	0.7	3.3	14.1	11.3	2.7	0.0	0.0	0.0	32.1	
	MAXIMUM <= 32	30	5.9	2.4	0.2	0.0	0.0	0.0	0.0	0.0	0.0	0.0	1.5	7.8	17.8	
MINIMUM <= 32	30	19.1	15.3	9.5	2.9	0.3	0.0	0.0	0.0	0.1	3.3	11.6	21.7	83.8		
MINIMUM <= 0	30	0.3	0.4	0.0	0.0	0.0	0.0	0.0	0.0	0.0	0.0	0.2	0.7	1.6		
H/C	NORMAL HEATING DEG. DAYS	30	921	741	617	431	246	83	11	11	112	408	711	984	5276	
	NORMAL COOLING DEG. DAYS	30	0	0	0	1	22	79	246	222	64	2	0	0	636	
RH	NORMAL (PERCENT)	30	78	73	66	59	55	48	39	39	48	59	75	80	60	
	HOURLY 04 LST	30	80	78	75	72	71	67	56	54	62	70	79	81	70	
	HOURLY 10 LST	30	78	71	61	53	49	43	34	36	43	54	73	78	56	
	HOURLY 16 LST	30	74	64	51	43	39	33	25	26	32	43	69	77	48	
	HOURLY 22 LST	30	80	77	71	65	60	53	41	41	52	64	78	81	64	
S	PERCENT POSSIBLE SUNSHINE															
W/O	MEAN NO. DAYS WITH: HEAVY FOG(VISBY <= 1/4 MI)	52	7.8	5.0	1.6	0.4	0.1	0.1	0.0	0.0	0.3	0.9	5.9	8.4	30.5	
	THUNDERSTORMS	68	0.0	0.0	0.2	0.9	1.5	1.8	1.8	1.8	0.9	0.2	0.1	0.0	9.2	
CLOUDINESS	MEAN: SUNRISE-SUNSET (OKTAS)															
	MIDNIGHT-MIDNIGHT (OKTAS)															
	MEAN NO. DAYS WITH: CLEAR	1	1.0	3.0	4.0		5.0	7.0								
	PARTLY CLOUDY			3.0	2.0		5.0	3.0								
CLOUDY	1	3.0	2.0	9.0		10.0	3.0									
PR	MEAN STATION PRESSURE(IN)	32	28.52	28.47	28.41	28.40	28.38	28.37	28.37	28.37	28.40	28.45	28.47	28.50	28.43	
	MEAN SEA-LEVEL PRES. (IN)	32	30.15	30.08	30.02	29.99	29.96	29.94	29.93	29.92	29.97	30.05	30.09	30.13	30.02	
WINDS	MEAN SPEED (MPH)	32	6.9	7.2	8.4	9.0	8.8	8.7	8.4	8.1	7.7	7.3	7.5	7.0	7.9	
	PREVAIL.DIR(TENS OF DEGS)	37	15	15	26	27	27	26	27	27	15	15	16	17	27	
	MAXIMUM 2-MINUTE: SPEED (MPH)	20	53	52	55	48	53	47	49	43	54	47	55	55	55	
	DIR. (TENS OF DEGS)		26	22	25	25	27	17	31	23	24	27	25	25	25	
	YEAR OF OCCURRENCE		2004	2002	1997	1997	2010	2008	2002	1997	2013	2012	2015	2015	DEC 2015	
	MAXIMUM 3-SECOND SPEED (MPH)	20	64	61	63	56	68	62	56	59	70	56	67	69	70	
	DIR. (TENS OF DEGS)		25	23	25	25	24	17	31	23	24	27	24	24	24	
	YEAR OF OCCURRENCE		2004	2002	1997	2013	2015	2008	2002	1997	2013	2012	2015	2015	SEP 2013	
PRECIPITATION	NORMAL (IN)	30	1.43	1.11	1.32	1.20	1.35	0.98	0.32	0.38	0.57	1.01	1.52	1.47	12.66	
	MAXIMUM MONTHLY (IN)	80	3.92	3.03	2.82	2.78	3.18	2.70	1.45	2.58	2.34	2.79	3.76	4.68	4.68	
	YEAR OF OCCURRENCE		1970	1940	1983	1978	1991	1947	1993	1977	1941	1947	1973	1973	DEC 1973	
	MINIMUM MONTHLY (IN)	80	0.21	0.07	0.24	0.01	0.03	0.03	T	0.00	T	T	0.04	0.21	0.00	
	YEAR OF OCCURRENCE		1949	1964	1941	1956	1964	2003	2015	1969	2012	1987	1939	1989	AUG 1969	
	MAXIMUM IN 24 HOURS (IN)	80	4.97	1.41	1.33	1.24	1.52	1.49	1.19	2.19	1.23	1.88	1.35	1.32	4.97	
	YEAR OF OCCURRENCE		2009	1994	1983	1990	1972	1947	1948	1993	1981	1982	1971	2010	JAN 2009	
	NORMAL NO. DAYS WITH: PRECIPITATION >= 0.01	30	12.1	9.3	11.6	9.0	9.3	6.3	2.9	2.4	3.9	6.8	12.3	12.0	97.9	
PRECIPITATION >= 1.00	30	0.0	0.0	0.0	0.1	0.1	0.1	0.0	0.1	0.0	0.0	0.1	0.0	0.5		
SNOWFALL	NORMAL (IN)	30	3.7	3.3	0.7	0.0	0.0	0.0	0.0	0.0	0.0	0.1	1.4	6.0	15.2	
	MAXIMUM MONTHLY (IN)	78	41.6	16.8	4.9	2.2	T	T	0.0	T	T	3.2	14.9	32.5	41.6	
	YEAR OF OCCURRENCE		1950	1994	1971	1975	2010	2012	2015	2013	2012	1973	1985	2008	JAN 1950	
	MAXIMUM IN 24 HOURS (IN)	78	13.3	16.1	4.0	2.2	T	T	T	T	0.0	3.2	8.0	9.9	16.1	
	YEAR OF OCCURRENCE		1950	1994	1970	1975	2010	2012	1993	2013		1973	1977	1948	FEB 1994	
	MAXIMUM SNOW DEPTH (IN)	66	16	12	6	0	0	0	0	0	0	2	8	15	16	
	YEAR OF OCCURRENCE		1957	1994	1993							1971	1978	2008	JAN 1957	
NORMAL NO. DAYS WITH: SNOWFALL >= 1.0	30	1.4	1.0	0.3	0.0	0.0	0.0	0.0	0.0	0.0	0.0	0.4	2.0	5.1		

PRECIPITATION (inches) 2015 PENDLETON (KPDT)

YEAR	JAN	FEB	MAR	APR	MAY	JUN	JUL	AUG	SEP	OCT	NOV	DEC	ANNUAL
1986	1.66	2.58	1.13	0.43	1.18	0.03	0.48	0.02	1.28	0.80	2.12	0.82	12.53
1987	1.48	0.64	1.39	0.47	0.85	0.38	0.34	0.05	0.03	T	0.76	1.23	7.62
1988	1.86	0.12	0.95	2.47	1.56	0.31	0.01	T	0.31	0.10	2.16	0.37	10.22
1989	1.86	1.36	1.72	1.57	1.47	0.57	0.09	1.25	0.12	0.84	1.27	0.21	12.33
1990	0.77	0.28	1.14	1.54	1.83	0.58	0.18	0.62	T	0.78	0.87	0.84	9.43
1991	0.98	0.57	1.00	0.71	3.18	2.14	0.24	0.42	T	0.92	2.68	0.67	13.51
1992	0.41	1.04	0.26	1.21	0.07	0.94	0.70	0.43	0.42	1.32	1.15	0.73	8.68
1993	1.79	0.80	1.49	1.85	1.51	0.71	1.45	2.19	T	0.22	0.93	0.92	13.86
1994	1.57	1.71	0.56	0.45	2.55	0.77	0.38	T	0.36	1.28	1.98	0.85	12.46
1995	2.53	1.07	1.93	2.28	0.97	2.30	0.24	0.29	0.55	1.21	2.18	1.73	17.28
1996	1.88	1.80	1.00	1.08	2.00	0.47	.06	.05	.61	1.22	1.96	2.32	14.45
1997	1.84	0.39	1.16	1.56	0.33	0.76	0.66	0.07	0.77	1.43	1.64	1.05	11.66
1998	2.61	1.19	1.01	1.28	1.53	0.76	0.68	T	1.11	0.60	2.31	1.37	14.45
1999	0.81	1.22	0.74	0.50	1.27	0.51	T	0.54	0.01	1.51	1.23	1.01	9.35
2000	1.99	2.98	2.42	0.69	1.60	0.72	0.07	T	2.01	2.06	1.22	0.57	16.33
2001	0.95	0.62	1.31	1.89	0.45	1.12	0.52	0.08	0.09	1.54	1.15	0.70	10.42
2002	0.58	0.76	0.81	1.48	1.10	1.30	0.02	0.03	0.20	0.73	0.55	2.23	9.79
2003	2.92	1.07	1.51	1.62	0.78	T	0.01	0.09	0.63	0.41	1.00	2.72	12.76
2004	2.32	1.76	0.72	1.29	1.81	1.47	0.48	0.97	0.45	0.78	0.88	0.65	13.58
2005	0.48	0.27	1.07	0.93	2.61	0.81	0.20	0.02	0.27	1.33	1.10	2.57	11.66
2006	2.18	0.37	1.87	1.57	1.17	1.96	0.07	0.02	0.37	0.50	2.06	1.67	13.81
2007	0.45	1.63	1.21	0.87	0.64	0.88	0.21	0.44	0.60	0.96	2.05	1.56	11.50
2008	1.82	0.44	1.12	0.23	1.61	1.37	T	0.76	0.13	0.32	1.39	2.58	11.77
2009	1.39	0.99	2.62	0.97	1.16	1.05	T	1.04	0.04	1.50	0.91	1.52	13.19
2010	1.74	0.78	0.90	2.04	2.97	2.05	0.08	0.49	0.99	1.74	1.86	3.13	18.77
2011	1.41	1.32	1.69	0.94	2.76	1.46	0.25	0.08	0.03	0.85	0.83	0.40	12.02
2012	1.54	1.39	1.93	2.50	0.67	1.55	0.42	T	T	1.58	1.67	1.19	14.44
2013	0.98	0.39	0.53	0.95	1.18	0.88	0.06	0.32	2.20	0.32	0.67	0.80	9.28
2014	0.73	1.63	2.26	1.02	0.83	1.02	0.22	0.61	0.22	0.60	1.30	2.80	13.24
2015	0.72	0.83	1.19	0.39	1.81	0.06	T	0.01	0.81	0.81	1.18	2.28	10.09
POR= 88 YRS	1.48	1.12	1.22	1.08	1.17	0.95	0.29	0.40	0.58	1.03	1.44	1.56	12.32

WBAN : 24155

AVERAGE TEMPERATURE (°F) 2015 PENDLETON (KPDT)

YEAR	JAN	FEB	MAR	APR	MAY	JUN	JUL	AUG	SEP	OCT	NOV	DEC	ANNUAL
1986	35.9	39.0	48.8	50.0	58.6	70.0	67.6	75.8	58.9	54.0	42.2	31.5	52.7
1987	30.4	39.1	46.4	53.9	59.7	67.2	68.9	70.6	66.2	54.1	42.6	32.7	52.7
1988	32.4	41.1	44.1	51.9	56.8	63.9	72.0	70.0	63.4	58.4	44.3	33.9	52.7
1989	38.3	25.1	42.5	52.9	55.9	65.9	70.3	68.8	63.6	51.8	44.6	33.2	51.1
1990	39.6	37.9	45.7	54.8	56.4	64.7	75.2	72.2	68.2	51.3	45.4	25.8	53.1
1991	31.2	44.7	42.6	49.6	53.9	59.6	71.5	73.3	64.9	51.6	41.2	36.9	51.8
1992	38.7	42.4	47.7	52.8	62.4	70.4	71.9	72.6	61.9	54.2	39.8	32.0	53.9
1993	25.1	28.2	41.9	50.3	61.8	62.9	65.4	68.0	64.3	54.6	34.6	35.6	49.4
1994	41.0	34.9	46.7	54.4	60.1	64.4	75.3	71.7	67.2	51.6	40.4	35.3	53.6
1995	34.9	41.7	45.3	49.0	57.7	62.1	72.0	67.4	66.0	50.2	46.1	34.5	52.2
1996	34.4	35.7	43.3	52.0	54.5	64.0	74.7	72.1	61.0	51.1	40.3	35.4	51.5
1997	32.6	38.6	45.4	48.6	59.8	63.1	70.4	73.1	64.9	51.4	42.7	34.9	52.1
1998	37.9	42.9	45.9	50.3	56.2	65.4	77.4	74.6	67.8	50.9	45.5	36.2	54.3
1999	41.0	42.3	43.4	47.3	54.1	63.7	70.0	72.5	62.5	50.8	46.0	38.1	52.6
2000	35.5	39.2	44.1	54.0	58.3	65.9	71.6	70.7	61.6	49.7	35.1	31.1	51.4
2001	32.7	35.5	44.4	47.3	58.7	62.1	70.5	73.2	66.2	51.2	42.2	36.6	51.7
2002	37.0	38.8	41.0	49.9	56.3	66.9	75.1	70.2	63.5	48.6	41.0	39.4	52.3
2003	40.6	38.7	48.6	49.9	57.3	67.7	76.2	73.0	65.8	55.6	38.8	35.4	54.0
2004	28.5	39.6	49.2	52.5	58.6	67.0	75.6	74.4	62.5	55.4	42.8	39.5	53.8
2005	35.6	37.5	46.8	50.4	59.0	63.0	73.5	72.6	61.1	52.9	38.7	30.0	51.8
2006	42.2	36.0	43.9	50.5	59.0	65.5	75.5	71.0	63.9	50.1	42.4	32.9	52.7
2007	30.7	38.4	46.4	49.4	58.2	64.8	75.9	69.4	61.0	49.6	39.6	35.6	51.6
2008	31.5	40.8	41.7	46.2	59.0	63.4	71.7	70.8	62.3	50.7	43.7	28.8	50.9
2009	33.5	35.9	40.3	49.0	58.7	65.7	74.8	72.2	64.9	47.9	41.9	27.1	51.0
2010	39.6	42.5	45.3	49.1	53.9	62.1	71.4	70.2	63.3	52.2	37.2	34.5	51.8
2011	35.4	36.4	43.9	45.1	53.4	60.4	67.8	71.7	66.4	51.7	41.0	32.1	50.4
2012	35.8	36.8	43.7	51.7	56.7	61.8	72.4	72.7	64.9	51.6	42.8	37.8	52.4
2013	31.2	39.3	45.6	49.3	58.1	65.3	75.3	72.9	65.2	49.0	38.6	30.0	51.7
2014	34.9	33.3	45.4	51.1	60.2	65.3	77.6	73.7	64.9	57.7	36.9	36.0	53.1
2015	36.0	44.0	49.5	49.0	60.5	72.8	76.1	72.4	61.3	56.3	38.4	37.0	54.4
POR= 88 YRS	33.0	37.4	44.8	50.4	58.3	64.9	73.1	71.6	63.1	52.4	40.6	35.0	52.1

HEATING DEGREE DAYS (base 65°F) 2015 PENDLETON (KPDT)

YEAR	JUL	AUG	SEP	OCT	NOV	DEC	JAN	FEB	MAR	APR	MAY	JUN	TOTAL
1987-88	25	12	65	334	668	995	1004	689	637	387	264	126	5206
1988-89	22	4	120	208	616	957	821	1113	691	354	279	42	5227
1989-90	11	17	76	403	607	978	781	752	591	299	262	89	4866
1990-91	9	13	11	419	583	1211	1039	564	689	454	338	162	5492
1991-92	4	2	52	418	707	865	810	649	527	362	127	36	4559
1992-93	11	28	129	333	752	1015	1231	1025	709	432	153	98	5916
1993-94	27	35	114	318	908	903	736	838	559	321	174	83	5016
1994-95	15	0	30	406	731	915	928	644	602	473	237	126	5107
1995-96	1	26	51	452	560	941	938	840	664	387	321	64	5245
1996-97	8	4	153	423	733	909	998	733	599	488	185	84	5317
1997-98	13	0	73	415	662	927	832	611	585	442	273	37	4870
1998-99	0	3	56	429	578	887	738	628	662	522	336	108	4947
1999-00	17	20	117	433	565	830	905	740	640	324	219	57	4867
2000-01	7	12	137	468	892	1046	995	819	631	523	238	121	5889
2001-02	14	5	48	419	676	874	863	727	738	445	270	66	5145
2002-03	6	10	110	501	714	788	748	729	499	444	259	32	4840
2003-04	1	0	74	300	779	913	1125	729	483	368	195	69	5036
2004-05	0	3	87	293	656	785	906	764	556	429	196	98	4773
2005-06	1	3	133	370	782	1077	701	804	644	429	240	61	5245
2006-07	5	10	105	458	675	989	1058	739	568	462	212	74	5355
2007-08	0	14	145	470	757	903	1030	694	714	556	214	115	5612
2008-09	3	19	104	444	634	1116	969	809	760	473	228	33	5592
2009-10	0	5	68	526	684	1170	780	625	602	468	347	121	5396
2010-11	16	25	77	395	828	940	912	795	646	586	355	150	5725
2011-12	15	4	63	406	713	1013	898	813	654	401	266	127	5373
2012-13	10	7	56	409	663	838	1039	711	593	461	238	80	5105
2013-	0	0	106	491	786	1075							
2013-14	0	0	106	491	786	1075	925	882	601	412	165	43	5486
2014-15	2	1	63	228	836	891	890	582	470	476	157	10	4606
2015-	0	8	136	268	788	860							

WBAN : 24155

COOLING DEGREE DAYS (base 65°F) 2015 PENDLETON (KPDT)

YEAR	JAN	FEB	MAR	APR	MAY	JUN	JUL	AUG	SEP	OCT	NOV	DEC	TOTAL
1986	0	0	0	2	88	184	121	341	35	1	0	0	772
1987	0	0	0	8	41	145	152	194	108	4	0	0	652
1988	0	0	0	0	16	98	246	164	78	9	0	0	611
1989	0	0	0	0	5	76	182	143	41	0	0	0	447
1990	0	0	0	0	4	92	330	245	114	3	0	0	788
1991	0	0	0	0	0	8	214	267	56	9	0	0	554
1992	0	0	0	1	52	204	229	275	45	4	0	0	810
1993	0	0	0	0	59	42	47	136	99	4	0	0	387
1994	0	0	0	8	29	72	341	214	103	0	0	0	767
1995	0	0	0	0	17	44	230	108	89	0	0	0	488
1996	0	0	0	0	0	42	312	230	39	0	0	0	623
1997	0	0	0	0	31	34	191	258	79	5	0	0	598
1998	0	0	0	6	5	56	390	309	144	0	0	0	910
1999	0	0	0	0	7	78	180	260	50	0	5	0	580
2000	0	0	0	0	17	89	215	196	40	0	0	0	557
2001	0	0	0	0	48	43	193	265	93	0	0	0	642
2002	0	0	0	0	9	129	323	178	70	0	0	0	709
2003	0	0	0	0	27	118	355	255	105	17	0	0	877
2004	0	0	0	0	4	135	337	300	19	4	0	0	799
2005	0	0	0	0	17	45	271	246	21	0	0	0	600
2006	0	0	0	0	58	79	338	202	79	0	3	0	759
2007	0	0	0	0	8	77	345	158	31	0	0	0	619
2008	0	0	0	0	37	75	218	207	29	7	0	0	573
2009	0	0	0	0	38	60	307	238	69	0	0	0	712
2010	0	0	0	0	10	43	220	196	31	4	0	0	504
2011	0	0	0	0	2	18	110	220	112	0	0	0	462
2012	0	0	0	5	13	36	247	253	57	0	0	0	611
2013	0	0	0	0	31	95	328	256	121	0	0	0	831
2014	0	0	0	0	22	60	401	278	66	12	0	0	839
2015	0	0	0	0	27	253	354	242	32	4	0	0	912

SNOWFALL (inches) 2015 PENDLETON (KPDT)

YEAR	JUL	AUG	SEP	OCT	NOV	DEC	JAN	FEB	MAR	APR	MAY	JUN	TOTAL
1987-88	0.0	0.0	0.0	0.0	0.3	2.3	10.6	0.0	1.5	0.0	0.0	0.0	14.7
1988-89	0.0	0.0	0.0	0.0	T	T	4.3	4.9	4.0	0.0	T	0.0	13.2
1989-90	0.0	0.0	0.0	0.0	0.0	1.0	T	2.0	1.3	0.0	0.0	0.0	4.3
1990-91	0.0	0.0	0.0	0.0	T	6.4	1.6	0.0	0.6	T	0.0	0.0	8.6
1991-92	0.0	0.0	0.0	2.3	1.0	T	0.8	T	0.0	0.0	0.0	0.0	4.1
1992-93	0.0	0.0	0.0	0.0	0.2	7.6	25.1	14.8	1.8	T	T	0.0	49.5
1993-94	T	0.0	0.0	0.0	0.7	0.4	T	16.8	0.2	0.0	0.0	T	18.1
1994-95	0.0	0.0	0.0	0.0	0.6	3.8	2.0	7.2	T	0.0	0.0	0.0	13.6
1995-96	0.0	0.0	0.0		0.0								
1996-97						10.1	3.2			T			
1997-98						4.2		0.0					
1998-99			0.0	0.0		0.8	0.0	2.4	T	T	T	0.0	
1999-00	0.0	0.0	0.0	0.0	0.0	0.5	5.7	4.5	1.0	0.0	T	0.0	11.7
2000-01	0.0	0.0	0.0	0.0	0.7	2.5	3.1	0.5	T	T	T	T	6.8
2001-02	0.0	0.0	0.0	0.0	T	3.0	1.5	T	0.3	0.0	0.0	T	4.8
2002-03	T	0.0	0.0	T	0.0	2.1	0.3	T	T	T	0.0	0.0	2.4
2003-04	0.0	0.0	0.0	T	0.1	13.9	10.0	2.2	T	0.0	T	0.0	26.2
2004-05	0.0	0.0	0.0	0.0	0.4	0.8	2.7	1.2	T	0.0	0.0	0.0	5.1
2005-06	0.0	0.0	0.0	0.0	0.2	1.6	T	0.0	T	0.0	0.0	0.0	1.8
2006-07	0.0	0.0	0.0	0.0	0.8	T	1.2	2.5	0.3	0.0	0.0	0.0	4.8
2007-08	0.0	0.0	0.0	0.0	8.7	8.1	10.7	4.3	2.8	T	0.0	0.0	34.6
2008-09	0.0	0.0	0.0	0.0	0.0	32.5	6.6	4.7	1.5	0.5	T	0.0	45.8
2009-10	0.0	0.0	0.0	0.0	T	6.7	0.0	0.0	T	T	T	0.0	6.7
2010-11	0.0	0.0	0.0	0.0	8.6	9.8	4.0	1.3	T	0.0	0.0	0.0	23.7
2011-12	0.0	0.0	0.0	0.0	1.6	0.1	2.7	0.9	2.3	T	0.0	T	7.6
2012-13	0.0	0.0	0.0	T	T	1.8	0.1	0.0	0.1	T	0.0	0.0	2.0
2013-	0.0	T	0.0	T	0.0	6.5							
2013-14	0.0	T	0.0	T	0.0	6.5	T	14.2	1.0	0.0	0.0	0.0	21.7
2014-15	0.0	0.0	0.0	0.0	4.6	2.2	0.4	0.0	0.0	T	0.0	0.0	7.2
2015-	0.0	0.0	0.0	0.0	1.6	2.5							
POR= 84 YRS	T	T	0.0	0.1	1.6	4.3	6.3	3.4	0.8	0.1	T	T	16.6

WBAN : 24155

REFERENCE NOTES :

<p>PAGE 1: THE TEMPERATURE GRAPH SHOWS NORMAL MAXIMUM AND NORMAL MINIMUM DAILY TEMPERATURES (SOLID CURVES) AND THE ACTUAL DAILY HIGH AND LOW TEMPERATURES (VERTICAL BARS).</p> <p>PAGE 2 AND 3: H/C INDICATES HEATING AND COOLING DEGREE DAYS. RH INDICATES RELATIVE HUMIDITY W/O INDICATES WEATHER AND OBSTRUCTIONS S INDICATES SUNSHINE. PR INDICATES PRESSURE. CLOUDINESS ON PAGE 3 IS THE SUM OF THE CEILOMETER AND SATELLITE DATA NOT TO EXCEED EIGHT EIGHTHS(OKTAS). GENERAL: T INDICATES TRACE PRECIPITATION, AN AMOUNT GREATER THAN ZERO BUT LESS THAN THE LOWEST REPORTABLE VALUE. + INDICATES THE VALUE ALSO OCCURS ON EARLIER DATES. BLANK ENTRIES DENOTE MISSING OR UNREPORTED DATA. ASOS INDICATES AUTOMATED SURFACE OBSERVING SYSTEM. PM INDICATES THE LAST DAY OF THE PREVIOUS MONTH. POR (PERIOD OF RECORD) BEGINS WITH THE JANUARY DATA MONTH AND IS THE NUMBER OF YEARS USED TO COMPUTE THE MEAN. INDIVIDUAL MONTHS WITHIN THE POR MAY BE MISSING. WHEN THE POR FOR A NORMAL IS LESS THAN 30 YEARS, THE NORMAL IS PROVISIONAL AND IS BASED ON THE NUMBER OF YEARS INDICATED. 0.* OR * INDICATES THE VALUE OR MEAN-DAYS-WITH IS BETWEEN 0.00 AND 0.05. CLOUDINESS FOR ASOS STATIONS DIFFERS FROM THE NON-ASOS OBSERVATION TAKEN BY A HUMAN OBSERVER. ASOS STATION CLOUDINESS IS BASED ON TIME-AVERAGED CEILOMETER DATA FOR CLOUDS AT OR BELOW 12,000 FEET CLEAR INDICATES 0 - 2 OKTAS, PARTLY CLOUDY INDICATES 3 - 6 OKTAS, AND CLOUDY INDICATES 7 OR 8 OKTAS. GENERAL CONTINUED: WIND DIRECTION IS RECORDED IN TENS OF DEGREES (2 DIGITS) CLOCKWISE FROM TRUE NORTH. "00" INDICATES CALM. "36" INDICATES TRUE NORTH. RESULTANT WIND IS THE VECTOR AVERAGE OF THE SPEED AND DIRECTION. AVERAGE TEMPERATURE IS THE SUM OF THE MEAN DAILY MAXIMUM AND MINIMUM TEMPERATURE DIVIDED BY 2. SNOWFALL DATA COMPRISE ALL FORMS OF FROZEN</p>	<p>PRECIPITATION, INCLUDING HAIL. A HEATING (COOLING) DEGREE DAY IS THE DIFFERENCE BETWEEN THE AVERAGE DAILY TEMPERATURE AND 65 F. DRY BULB IS THE TEMPERATURE OF THE AMBIENT AIR. DEW POINT IS THE TEMPERATURE TO WHICH THE AIR MUST BE COOLED TO ACHIEVE 100 PERCENT RELATIVE HUMIDITY. WET BULB IS THE TEMPERATURE THE AIR WOULD HAVE IF THE MOISTURE CONTENT WAS INCREASED TO 100 PERCENT RELATIVE HUMIDITY. ON JULY 1, 1996, THE NATIONAL WEATHER SERVICE BEGAN USING THE "METAR" OBSERVATION CODE THAT WAS ALREADY EMPLOYED BY MOST OTHER NATIONS OF THE WORLD. THE MOST NOTICEABLE DIFFERENCE IN THIS ANNUAL PUBLICATION WILL BE THE CHANGE IN UNITS FROM TENTHS TO EIGHTHS(OKTAS) FOR REPORTING THE AMOUNT OF SKY COVER. STATION HISTORY STOPPED WITH THE 2009 ANNUAL. IF YOU NEED STATION HISTORY INFORMATION GO TO "Historical Observing Metadata Repository", URL IS: http://www.ncdc.noaa.gov/homr/ SNOWFALL STOPPED MONTH & YEAR INDICATED ABOVE. NO FURTHER YEARS INCLUDED UNLESS RESTARTED.</p> <p>NOTE: The "Period of Record:(POR)" for all "averages" is based on "Summary of the Day First Order Station" and "Cooperative Summary of the Day" archives.</p>
---	---

2015 PENDLETON OREGON (KPDT)

Pendleton is located in the southeastern part of the Columbia Basin, that low country of northern Oregon and central and eastern Washington which is almost entirely surrounded by mountains. This Basin is bounded on the south by the high country of central Oregon, on the north by the mountains of western Canada, on the west by the Cascade Range and on the east by the Blue Mountains and the north Idaho plateau. The gorge in the Cascades through which the Columbia River reaches the Pacific is the most important break in the barriers surrounding this basin. These physical features have important influences on the general climate of Pendleton and the surrounding territory.

The Weather Service Office at Pendleton Airport is located in rolling country which slopes generally upward toward the Blue Mountains about 15 miles to the east and southeast. The Columbia River approaches the area from the northwest to its junction with the Walla Walla River at an elevation of 351 feet and some 25 miles north of Pendleton, then turns southwestward to be joined a few miles below by the Umatilla River. Both the Walla Walla and Umatilla Rivers have their sources in the Blue Mountains and flow westward to the Columbia. The observation station is at an elevation of nearly 1,500 feet, about 3 miles northwest of downtown Pendleton. The city of Pendleton lies in the shallow east-west valley of the Umatilla River, approximately 400 feet lower than the airport.

Precipitation in the Pendleton area is definitely seasonal in occurrence with an average of only 10 percent of the annual total occurring in the three-month period, July-September. Most precipitation reaching this area accompanies cyclonic storms moving in from the Pacific Ocean. These storms reach their greatest intensity and frequency from October through April. The Cascade Range west of the Columbia Basin reduces the amount of precipitation received from the Pacific cyclonic storms. This influence is felt, particularly, in the desert area of the central part of the Basin. A gradual rise in elevation from the Columbia River to the foothills of the Blue Mountains again results in increased precipitation. This increase supplies sufficient moisture for productive wheat, pea, and stock raising activity in the area surrounding Pendleton.

The lighter summertime precipitation usually accompanies thunderstorms which often move into the area from the south or southwest. On occasion, these storms are quite intense, causing flash flooding with resultant heavy property damage and even loss of life.

Seasonal temperature extremes are usually quite moderate for the latitude. The last occurrence in spring of temperatures as low as 32 degrees is mid-April, and the average last occurrence in the fall of 32 degrees is late October. At the city station, where cool air settles in the valley on still nights, temperatures of 32 degrees have been recorded later in the spring and earlier in the fall. Under usual atmospheric conditions, air from the Pacific, with moderate temperature characteristics, moves across the Cascades or through the Columbia Gorge resulting in mild temperatures in the Pendleton area. When this flow of air from the west is impeded by slow-moving high pressure systems over the interior of the continent, temperature conditions sometimes become rather severe, hot in summer and cold in winter. During the summer or early fall, if a stagnant high predominates to the north or east of Pendleton, the hot, dry conditions may prove detrimental to crops during late May and June, and cause fire danger in the forest and grassland areas during late summer and early fall. During winter, coldest temperatures occur when air from a cold high pressure system in central Canada moves southwestward across the Rockies and flows down into the Columbia Basin. Under this condition the heavy cold air sometimes remains at low levels in the Basin for several days while warmer air from the Pacific flows above it, causing comparatively mild temperatures at higher elevations. Extreme winter temperatures are not particularly common in the Pendleton area. Below zero readings are recorded in approximately 60 percent of winters. Maximum temperatures usually reach 100 degrees or slightly higher on a few days during the summer.

Station History

PENDLETON, OR

NAME	Begin Date	End Date	Latitude	Longitude	Elevation Feet	Relocation	Platform
PENDLETON MUNICIPAL AP	1934-06-02	1935-01-01	45° 40'	-118° 51'	1492	5 MI WNW	AIRWAYS
PENDLETON MUNICIPAL AP	1935-04-02	1943-02-10	45° 40'	-118° 51'	1489	50 YD SE	AIRWAYS
PENDLETON MUNICIPAL AP	1973-01-01	1981-12-31	45° 40'	-118° 51'	1482		COOP, WXSVC
PENDLETON E OR REGIONAL AP	1995-06-01	1996-03-01	45° 41'	-118° 51'	1486	.5 MI E	ASOS, COOP
PENDLETON E OR REGIONAL AP	2010-05-24	Present	45° 41'	-118° 51'	1486		ASOS, COOP
PENDLETON FIELD	1954-01-01	1972-12-01	45° 40'	-118° 51'	1482		AIRWAYS, COOP
PENDLETON	1928-01-01	1934-02-02	45° 40'	-118° 43'	1200		AIRWAYS
PENDLETON FIELD	1948-07-01	1954-01-01	45° 40'	-118° 51'	1489		AIRWAYS, COOP
PENDLETON MUNICIPAL AP	1981-12-31	1995-06-01	45° 40'	-118° 51'	1482		COOP
PENDLETON MUNICIPAL AP	1948-01-01	1948-07-01	45° 40'	-118° 51'	1489		AIRWAYS, COOP
PENDLETON MUNICIPAL AP	1972-12-01	1973-01-01	45° 40'	-118° 51'	1482		AIRWAYS, COOP
PENDLETON E OR REGIONAL AP	1996-03-01	2010-05-24	45° 41'	-118° 51'	1486		ASOS, COOP
PENDLETON MUNICIPAL AP	1935-01-01	1935-04-02	45° 40'	-118° 51'	1492		AIRWAYS
PENDLETON MUNICIPAL AP	1943-02-10	1948-01-01	45° 40'	-118° 51'	1489	.5 MI WSW	AIRWAYS

Element History

Element	Begin Date	End Date	Frequency	Time Of Observation	Equipment *	Equipment * Modifications	Equipment Exposure
PRECIP	1995-06-01	2001-06-01	DAILY	2400	TB	RCRD	
WIND	2001-06-01	2002-10-01	HOURLY	UNKN	ANEMCUP		
PRECIP	2011-08-03	Present	HOURLY	2400	AHTB	SHLD; RCRD; HTD	
TEMP	1934-06-02	1982-01-01	DAILY	2400			
WIND	1995-06-01	2001-06-01	HOURLY	UNKN	ANEMCUP		
PRECIP	1995-06-01	2001-06-01	HOURLY	2400	TB	RCRD	
PRECIP	2007-04-26	2010-05-24	HOURLY	2400	TB	SHLD; RCRD	
PRECIP	2010-05-24	2011-08-03	DAILY	2400	PCPN1	SHLD	
PRECIP	1982-01-01	1995-06-01	DAILY	2400	UNIV	RCRD	
PRECIP	2001-06-01	2002-10-01	DAILY	2400	TB	SHLD; RCRD	
TEMP	2010-05-24	2011-08-03	DAILY	2400	HYGR		
PRECIP	1982-01-01	1995-06-01	HOURLY	2400			
TEMP	1995-06-01	2001-06-01	DAILY	2400			
PRECIP	2002-10-01	2007-04-26	DAILY	2400	TB	SHLD; RCRD	
TEMP	2002-10-01	2007-04-26	DAILY	2400	HYGR		
PRECIP	2007-04-26	2010-05-24	DAILY	2400	TB	SHLD; RCRD	
WIND	2010-05-24	2011-08-03	HOURLY	UNKN	ANEMSONIC		
PRECIP	1934-06-02	1982-01-01	DAILY	2400	UNIV	RCRD	
TEMP	1982-01-01	1995-06-01	DAILY	2400			
WIND	2007-04-26	2010-05-24	HOURLY	UNKN	ANEMSONIC		
PRECIP	2010-05-24	2011-08-03	HOURLY	2400	TB	RCRD	
TEMP	2011-08-03	Present	DAILY	2400	ATEMP		
WIND	2011-08-03	Present	HOURLY	UNKN	ANEMSONIC		
PRECIP	2001-06-01	2002-10-01	HOURLY	2400	TB	SHLD; RCRD	
PRECIP	2002-10-01	2007-04-26	HOURLY	2400	TB	SHLD; RCRD	
TEMP	2001-06-01	2002-10-01	DAILY	2400			
WIND	2002-10-01	2007-04-26	HOURLY	UNKN	ANEMCUP		
TEMP	2007-04-26	2010-05-24	DAILY	2400	HYGR		
PRECIP	2011-08-03	Present	DAILY	2400	PCPNX	SHLD	

* For explanation of codes and abbreviations see Station Metadata link below.

Other Station Information can be found at:

ASOS Implementation by NWS: <http://www.nws.noaa.gov/ops2/Surface/asosimplementation.htm>

Station Metadata website: <http://www.ncdc.noaa.gov/homr>

INQUIRES/COMMENTS CALL: (828) 271-4800, option 2

Fax Number : (828) 271-4876

TDD : (828) 271-4010

Email : ncdc.orders@noaa.gov

NOAA/National Centers for Environmental Information

Attn: User Engagement & Services Branch

151 Patton Avenue

Asheville, NC 28801-5001

Visit our Web Site for other weather data: www.ncdc.noaa.gov