

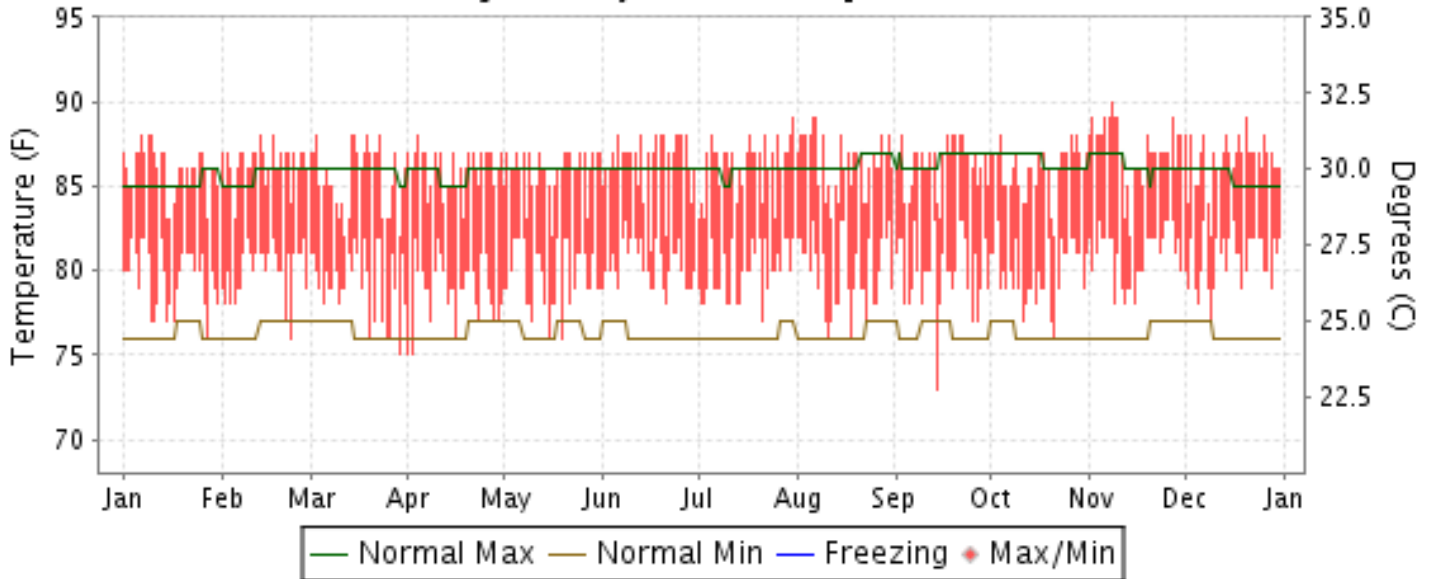


2015 LOCAL CLIMATOLOGICAL DATA ANNUAL SUMMARY WITH COMPARATIVE DATA

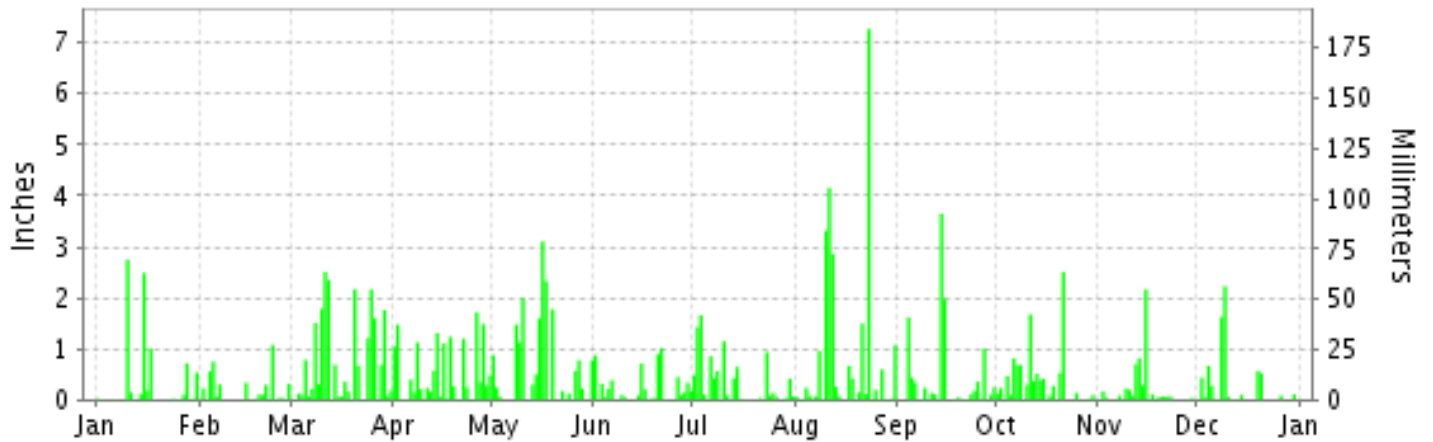
ISSN 0198-4330

MAJURO, PACIFIC (PKMR)

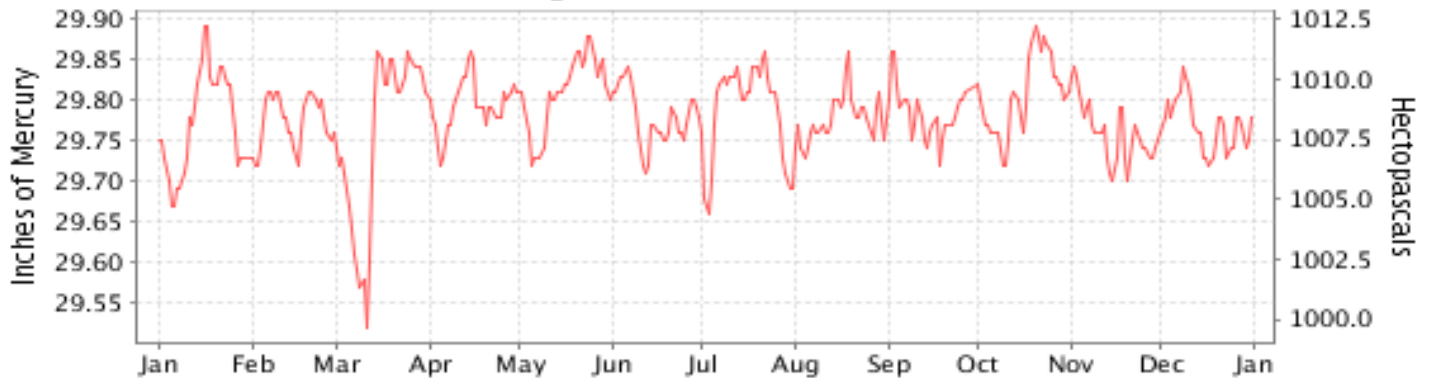
Daily Max/Min Temperature



Daily Precipitation



Daily Station Pressure



I CERTIFY THAT THIS IS AN OFFICIAL PUBLICATION OF THE NATIONAL OCEANIC AND ATMOSPHERIC ADMINISTRATION, AND IS COMPILED FROM RECORDS ON FILE AT THE NATIONAL CLIMATIC DATA CENTER.

NATIONAL
OCEANIC AND
ATMOSPHERIC ADMINISTRATION

NATIONAL
ENVIRONMENTAL SATELLITE, DATA
AND INFORMATION SERVICE

NATIONAL CENTERS for
ENVIRONMENTAL INFORMATION (NCEI)
ASHEVILLE, NORTH CAROLINA

Thomas R. Karl
DIRECTOR
NCEI

METEOROLOGICAL DATA FOR 2015

MAJURO (PKMR)

LATITUDE: 7° 3'N LONGITUDE: 171° 16'E ELEVATION (FT): GRND: 10 BARO: 8 TIME ZONE: 180 E MER (UTC 12) WBAN: 40710

ELEMENT		JAN	FEB	MAR	APR	MAY	JUN	JUL	AUG	SEP	OCT	NOV	DEC	YEAR	
TEMPERATURE °F	MEAN DAILY MAXIMUM	86.0	86.4	85.5	86.1	85.9	86.4	86.3	86.5	86.4	86.1	87.2	86.5	86.3	
	HIGHEST DAILY MAXIMUM	88	88	88	88	87	88	89	89	88	88	90	89	90	
	DATE OF OCCURRENCE	10+	17+	23+	04	31+	27+	31	07+	22+	28+	08	20	NOV 08	
	MEAN DAILY MINIMUM	79.6	80.0	79.3	78.9	79.7	80.4	79.9	79.9	79.9	79.9	81.0	80.7	79.9	
	LOWEST DAILY MINIMUM	76	76	75	75	76	78	77	76	73	76	78	77	73	
	DATE OF OCCURRENCE	28	23	29	02+	19+	21	21	18+	14	21	15+	09	SEP 14	
	AVERAGE DRY BULB	82.8	83.2	82.4	82.5	82.8	83.4	83.1	83.2	83.2	83.0	84.1	83.6	83.1	
	MEAN WET BULB	77.5	78.1	78.5	78.4	78.5	78.9	78.8	79.0	79.0	78.9	79.3	78.7	78.6	
	MEAN DEW POINT	75.3	76.1	76.9	76.8	76.9	77.2	77.2	77.6	77.3	77.2	77.5	76.9	76.9	
	NUMBER OF DAYS WITH:														
	MAXIMUM >= 90°	0	0	0	0	0	0	0	0	0	0	1	0	1	
	MAXIMUM <= 32°	0	0	0	0	0	0	0	0	0	0	0	0	0	
MINIMUM <= 32°	0	0	0	0	0	0	0	0	0	0	0	0	0		
MINIMUM <= 0°	0	0	0	0	0	0	0	0	0	0	0	0	0		
H/C	HEATING DEGREE DAYS	0	0	0	0	0	0	0	0	0	0	0	0	0	
	COOLING DEGREE DAYS	560	516	545	531	558	558	569	571	552	565	579	586	6690	
RH	MEAN (PERCENT)	79	80	84	83	83	82	82	83	82	83	82	81	82	
	HOUR 06 LST	81	83	86	85	85	84	85	85	85	86	85	83	84	
	HOUR 12 LST	73	76	80	79	79	79	79	80	79	79	78	77	78	
	HOUR 18 LST	80	81	85	84	83	82	83	83	82	84	83	82	83	
	HOUR 24 LST	81	82	85	86	84	85	84	84	84	85	85	83	84	
W/O	NUMBER OF DAYS WITH:														
	HEAVY FOG(VISBY <= 1/4 MI)	0	0	0	0	0	0	0	0	0	0	0	0	0	
	THUNDERSTORMS	2	0	0	1	1	0	0	0	3	0	1	1	9	
PR	MEAN STATION PRESS. (IN.)	29.77	29.78	29.75	29.79	29.81	29.78	29.79	29.78		29.81	29.76	29.77		
	MEAN SEA-LEVEL PRESS. (IN.)	29.78	29.79	29.76	29.80	29.82	29.79	29.80	29.79	29.79	29.82	29.77	29.78	29.79	
WINDS	RESULTANT SPEED (MPH)	10.7	8.6	9.7	7.6	8.0	7.8	2.8	5.0	8.7	4.6	6.0	10.5	4.0	
	RES. DIR. (TENS OF DEGS.)	05	06	07	06	06	07	24	23	23	26	06	05	07	
	MEAN SPEED (MPH)	11.4	9.8	10.6	8.8	9.3	9.2	7.3	9.0	10.8	9.7	7.3	11.2	9.5	
	PREVAIL.DIR.(TENS OF DEGS.)	04	07	07	07	05	07	25	25	26	26	04	04	04	
	MAXIMUM 2-MINUTE WIND														
	SPEED (MPH)	24	23	26	21	23	25	29	32	29	25	20	21	32	
	DIR. (TENS OF DEGS.)	05	07	09	09	07	18	33	19	19	27	14	04	19	
	DATE OF OCCURRENCE	04	04	11	08	08	27	13	23	06	11	16	31	AUG 23	
	MAXIMUM 3-SECOND WIND:														
SPEED (MPH)												01			
DIR. (TENS OF DEGS.)															
DATE OF OCCURRENCE															
PRECIPITATION	WATER EQUIVALENT:														
	TOTAL (IN.)	8.24	4.32	21.65	15.23	18.11	6.31	9.72	24.24	10.72	10.52	5.33	6.83	141.22	
	GREATEST 24-HOUR (IN.)	2.75	1.08	2.51	1.72	3.11	1.02	1.66	7.27	3.65	2.51	2.17	2.23	7.27	
	DATE OF OCCURRENCE	10	23	11	26	16	21	03	23	14	21	15	09	AUG 23	
	NUMBER OF DAYS WITH:														
PRECIPITATION 0.01	19	17	24	26	19	24	21	25	21	22	21	17	256		
PRECIPITATION 0.10	9	10	19	20	17	14	13	15	14	18	8	9	166		
PRECIPITATION 1.00	3	1	9	9	7	1	3	6	4	2	1	2	48		
SNOWFALL	SNOW,ICE PELLETS,HAIL														
	TOTAL (IN.)	0.0	0.0	0.0	0.0	0.0	0.0	0.0	0.0	0.0	0.0	0.0	0.0	0.0	
	GREATEST 24-HOUR (IN.)	0.0	0.0	0.0	0.0	0.0	0.0	0.0	0.0	0.0	0.0	0.0	0.0	0.0	
	DATE OF OCCURRENCE	0	0	0	0	0	0	0	0	0	0	0	0	0	
	MAXIMUM SNOW DEPTH (IN.)	0	0	0	0	0	0	0	0	0	0	0	0	0	
DATE OF OCCURRENCE															
NUMBER OF DAYS WITH:															
SNOWFALL >= 1.0	0	0	0	0	0	0	0	0	0	0	0	0	0		

NORMALS, MEANS, AND EXTREMES MAJURO (PKMR)

LATITUDE: 7° 3'N
LONGITUDE: 171° 16'E
ELEVATION (FT): GRND: 10 BARO: 8
TIME ZONE: 180 E MER (UTC 12)
WBAN: 40710

ELEMENT		POR	JAN	FEB	MAR	APR	MAY	JUN	JUL	AUG	SEP	OCT	NOV	DEC	YEAR
TEMPERATURE °F	NORMAL DAILY MAXIMUM	30	85.5	85.9	86.1	86.1	86.4	86.3	86.4	86.7	86.9	86.9	86.6	85.9	86.3
	MEAN DAILY MAXIMUM	60	85.3	85.6	85.8	85.7	86.0	85.9	86.0	86.3	86.5	86.5	86.1	85.6	85.9
	HIGHEST DAILY MAXIMUM	60	92	91	90	90	90	92	96	91	90	91	92	91	96
	YEAR OF OCCURRENCE		2008	2008	2008	2010	2008	2008	2008	1969	2012	1958	2007	2007	JUL 2008
	MEAN OF EXTREME MAXS.	60	87.2	87.4	87.7	87.7	88.0	88.0	88.2	88.4	88.7	88.8	88.4	87.7	88.0
	NORMAL DAILY MINIMUM	30	77.8	77.9	78.0	78.1	78.3	77.9	77.8	77.9	77.9	77.8	77.9	77.7	77.9
	MEAN DAILY MINIMUM	60	77.1	77.3	77.3	77.1	77.3	77.1	76.9	77.1	77.0	77.0	77.0	77.2	77.1
	LOWEST DAILY MINIMUM	60	69	70	70	70	70	70	70	71	70	70	70	68	70
	YEAR OF OCCURRENCE		1958	1985	1993	1985	1985	1958	1989	1990	1991	1984	1991	1984	NOV 1991
	MEAN OF EXTREME MINS.	60	73.5	73.6	73.5	73.6	73.8	73.6	73.4	73.4	73.3	73.3	73.3	73.5	73.5
	NORMAL DRY BULB	30	81.7	81.9	82.1	82.1	82.3	82.1	82.1	82.3	82.4	82.4	82.2	81.8	82.1
	MEAN DRY BULB	60	81.2	81.4	81.5	81.5	81.7	81.5	81.5	81.7	81.8	81.7	81.6	81.4	81.5
	MEAN WET BULB	32	76.1	75.9	76.2	76.6	77.1	77.2	77.0	76.9	77.0	76.9	77.1	76.7	76.7
	MEAN DEW POINT	32	75.3	74.9	75.3	75.8	76.4	76.5	76.2	76.1	76.1	76.2	76.3	76.0	75.9
	NORMAL NO. DAYS WITH: MAXIMUM >= 90	30	0.1	0.2	0.0	0.0	0.0	0.0	0.0	0.1	0.2	0.4	0.4	0.5	0.3
MAXIMUM <= 32	30	0.0	0.0	0.0	0.0	0.0	0.0	0.0	0.0	0.0	0.0	0.0	0.0	0.0	0.0
MINIMUM <= 32	30	0.0	0.0	0.0	0.0	0.0	0.0	0.0	0.0	0.0	0.0	0.0	0.0	0.0	0.0
MINIMUM <= 0	30	0.0	0.0	0.0	0.0	0.0	0.0	0.0	0.0	0.0	0.0	0.0	0.0	0.0	0.0
H/C	NORMAL HEATING DEG. DAYS	30	0	0	0	0	0	0	0	0	0	0	0	0	0
	NORMAL COOLING DEG. DAYS	30	516	473	529	513	538	513	530	536	522	538	517	521	6246
RH	NORMAL (PERCENT)	30	79	77	78	80	81	81	81	80	79	79	80	80	80
	HOURLY 06 LST	30	81	80	81	82	83	83	83	82	82	82	82	82	82
	HOURLY 12 LST	30	81	80	81	83	84	84	84	84	83	83	83	82	83
	HOURLY 18 LST	30	75	73	74	77	78	78	77	76	76	76	77	77	76
	HOURLY 24 LST	30	78	77	78	80	80	80	80	79	78	79	80	80	79
S	PERCENT POSSIBLE SUNSHINE	45	61	64	66	59	58	55	56	61	59	56	53	53	58
W/O	MEAN NO. DAYS WITH: HEAVY FOG(VISBY <= 1/4 MI)	42	0.0	0.0	0.0	0.0	0.0	0.0	0.0	0.0	0.0	0.0	0.0	0.0	0.0
	THUNDERSTORMS	50	0.3	0.5	0.6	0.7	0.8	1.2	1.3	1.5	2.3	1.8	1.9	1.0	13.9
CLOUDINESS	MEAN: SUNRISE-SUNSET (OKTAS)	49	6.9	6.6	6.8	6.9	6.9	7.0	7.0	6.7	6.8	6.7	7.0	7.0	6.9
	MIDNIGHT-MIDNIGHT (OKTAS)	26	6.9	6.5	6.6	7.0	6.9	6.9	7.0	6.7	6.8	6.7	6.7	6.8	6.8
	MEAN NO. DAYS WITH: CLEAR	49	0.8	0.9	1.3	0.7	0.8	0.3	0.5	0.7	0.8	0.9	0.4	0.6	8.7
	PARTLY CLOUDY	49	7.1	7.9	7.7	7.0	7.1	7.1	6.6	7.7	6.6	6.8	6.8	6.3	84.7
	CLOUDY	49	23.3	19.6	22.2	22.6	23.3	22.6	23.4	22.1	22.1	22.8	22.3	23.6	269.9
PR	MEAN STATION PRESSURE(IN)	32	29.78	29.79	29.80	29.81	29.81	29.81	29.80	29.81	29.81	29.80	29.78	29.77	29.80
	MEAN SEA-LEVEL PRES. (IN)	32	29.79	29.80	29.81	29.82	29.82	29.82	29.82	29.82	29.82	29.81	29.79	29.78	29.81
WINDS	MEAN SPEED (MPH)	32	12.2	11.9	12.3	11.6	10.6	9.8	8.3	7.1	7.0	7.1	8.3	11.0	9.8
	PREVAIL.DIR.(TENS OF DEGS)	10	07	07	07	07	08	08	08	08	08	08	08	07	08
	MAXIMUM 2-MINUTE: SPEED (MPH)	26	36	35	26	29	29	29	30	33	29	33	31	35	36
	DIR. (TENS OF DEGS)		00	07	09	10	10	00	23	08	19	00	02	09	00
	YEAR OF OCCURRENCE		1992	2002	2015	2008	2013	1993	2002	2007	2015	1988	1990	1997	JAN 1992
	MAXIMUM 3-SECOND SPEED (MPH)	25	53	44	41	43	44	44	44	47	45	47	44	59	59
	DIR. (TENS OF DEGS)		04	09	09	09	04	09	09	09	22	09	22	04	04
	YEAR OF OCCURRENCE		1992	1998	2000	2008	1998	2000	2008	2007	1994	1985	1991	1997	DEC 1997
PRECIPITATION	NORMAL (IN)	30	8.28	7.62	7.55	9.63	9.86	10.93	11.93	11.42	12.14	13.27	13.23	11.56	127.42
	MAXIMUM MONTHLY (IN)	61	23.83	20.93	29.54	31.10	22.23	20.86	22.49	24.24	21.11	24.26	23.56	24.80	31.10
	YEAR OF OCCURRENCE		2000	2000	1991	1971	1956	2010	2014	2015	1964	1955	1978	1968	APR 1971
	MINIMUM MONTHLY (IN)	61	0.78	0.20	0.15	0.36	1.49	4.50	4.93	5.33	4.27	5.84	4.53	2.28	0.15
	YEAR OF OCCURRENCE		1973	1992	1992	1992	1983	2009	1997	1959	2004	2012	1972	1957	MAR 1992
	MAXIMUM IN 24 HOURS (IN)	61	10.04	6.65	15.26	6.63	8.10	7.39	5.86	7.27	5.76	8.74	10.01	17.88	17.88
	YEAR OF OCCURRENCE		2000	1991	1991	1973	1997	1983	1987	2015	1982	1974	1957	1972	DEC 1972
	NORMAL NO. DAYS WITH: PRECIPITATION >= 0.01	30	19.3	16.1	17.6	18.9	22.1	23.1	24.3	22.9	22.9	23.4	22.9	22.7	256.2
	PRECIPITATION >= 1.00	30	2.3	2.1	2.1	3.5	3.0	3.4	3.7	3.7	3.7	4.1	4.0	3.3	38.9
SNOWFALL	NORMAL (IN)	30	0.0	0.0	0.0	0.0	0.0	0.0	0.0	0.0	0.0	0.0	0.0	0.0	0.0
	MAXIMUM MONTHLY (IN)	19	0.0	0.0	0.0	0.0	0.0	0.0	0.0	0.0	0.0	0.0	0.0	0.0	0.0
	YEAR OF OCCURRENCE														
	MAXIMUM IN 24 HOURS (IN)	61	0.0	0.0	0.0	0.0	0.0	0.0	0.0	0.0	0.0	0.0	0.0	0.0	0.0
	YEAR OF OCCURRENCE														
	MAXIMUM SNOW DEPTH (IN)	59	0	0	0	0	0	0	0	0	0	0	0	0	0
YEAR OF OCCURRENCE															
NORMAL NO. DAYS WITH: SNOWFALL >= 1.0	30	0.0	0.0	0.0	0.0	0.0	0.0	0.0	0.0	0.0	0.0	0.0	0.0	0.0	

PRECIPITATION (inches) 2015 MAJURO (PKMR)

YEAR	JAN	FEB	MAR	APR	MAY	JUN	JUL	AUG	SEP	OCT	NOV	DEC	ANNUAL
1986	10.51	3.91	14.75	12.23	14.94	15.89	12.09	19.98	10.52	7.32	9.37	17.10	148.61
1987	6.24	10.38	4.90	2.14	9.22	14.76	21.17	8.36	11.09	11.29	15.45	7.48	122.48
1988	14.65	1.52	6.76	5.92	6.85	9.11	14.33	10.59	13.86	17.87	7.19	13.65	122.30
1989	7.75	8.30	4.76	8.54	11.18	7.20	17.44	10.34	14.55	16.41	19.84	8.52	134.83
1990	7.01	4.21	10.36	9.43	16.56	7.28	9.09	14.39	7.57	6.17	15.87	10.36	118.30
1991	9.87	11.68	29.54	20.46	13.24	16.60	16.41	11.04	19.73	10.44	15.35	3.48	177.84
1992	7.73	0.20	0.15	0.36	14.21	8.41	10.36	12.62	5.90	13.57	10.05	3.52	87.08
1993	5.82	8.51	13.49	14.10	11.31	8.17	13.92	13.32	9.80	20.48	14.41	19.24	152.57
1994	9.37	1.72	9.45	14.14	15.69	5.70	8.28	11.70	13.19	10.42	11.31	16.68	127.65
1995	8.17	4.37	4.59	21.97	7.91	12.22	10.60	11.89	15.78	10.59	11.18	12.10	131.37
1996	14.12	16.72	8.28	19.47	10.61	12.96	7.39	7.49	15.70	9.74	13.24	16.87	152.59
1997	5.44	6.95	6.57	14.54	21.33	8.19	4.93	11.69	19.09	10.91	7.93	7.63	125.20
1998	1.57	0.34	0.27	0.64	6.59	10.51	16.29	12.05	9.30	19.45	13.57	11.48	102.06
1999	7.23	3.82	10.15	5.32	8.20	13.07	8.94	10.99	11.35	17.85	17.27	9.85	124.04
2000	23.83	20.93	6.59	8.81	4.02	5.31	11.31	11.06	7.02	12.27	15.03	9.20	135.38
2001	5.73	5.10	0.46	4.07	7.07	15.10	10.04	11.72	20.89	20.19	14.92	9.02	124.31
2002	9.00	6.80	7.57	8.44	14.40	15.77	11.85	15.33	14.29	15.28	8.79	17.41	144.93
2003	8.62	9.95	1.47	13.38	10.55	11.50	10.16	6.33	16.62	17.02	9.14	15.26	130.00
2004	7.51	14.72	8.84	15.19	10.79	12.29	9.09	13.53	4.27	7.26	6.00	11.06	120.55
2005	5.59	9.92	9.31	9.51	6.84	8.02	12.79	14.94	10.32	14.56	18.50	11.84	132.14
2006	10.50	6.41	6.50	7.31	6.28	11.55	11.03	9.34	8.68	10.74	8.68	7.74	104.76
2007	2.00	4.90	4.31	11.26	11.42	6.67	8.64	7.27	10.25	20.74	20.31	10.89	118.66
2008	9.53	7.90	6.27	5.25	12.53	9.29	10.12	8.40	7.95	12.19	14.27	11.80	115.50
2009	6.26	6.96	4.09	10.86	5.53	4.50	9.44	8.05	15.19	10.35	11.26	16.77	109.26
2010	4.89	3.74	9.73	9.41	2.42	20.86	15.76	14.09	19.85	13.18	18.13	11.01	143.07
2011	8.10	13.05	15.83	3.15	12.60	10.63	14.56	12.63	12.87	14.65	15.97	10.37	144.41
2012	8.27	4.46	12.75	9.14	5.96	8.89	7.54	10.15	7.47	5.84	20.69	6.09	107.25
2013	2.42	10.44	5.13	6.46	6.60	10.55	13.03	7.62	9.70	9.01	12.84	5.76	99.56
2014	9.66	12.19	5.96	23.20	7.58	9.86	22.49	9.63	14.93	11.14	10.80	7.68	145.12
2015	8.24	4.32	21.65	15.23	18.11	6.31	9.72	24.24	10.72	10.52	5.33	6.83	141.22
POR= 60 YRS	8.13	7.19	8.54	10.75	10.84	11.30	12.30	11.56	12.46	13.81	13.26	11.07	131.21

WBAN : 40710

AVERAGE TEMPERATURE (°F) 2015 MAJURO (PKMR)

YEAR	JAN	FEB	MAR	APR	MAY	JUN	JUL	AUG	SEP	OCT	NOV	DEC	ANNUAL
1986	81.1	81.9	80.3	81.1	81.7	81.1	81.7	81.8	81.8	82.1	81.9	80.5	81.4
1987	80.6	80.7	81.0	81.8	81.5	81.1	80.9	82.1	81.8	82.2	81.8	81.2	81.4
1988	80.9	81.9	81.8	82.1	81.8	81.3	80.2	80.9	80.6	80.3	81.2	80.4	81.1
1989	80.5	80.3	80.6	80.5	80.8	81.0	80.5	80.9	81.1	81.6	81.4	82.0	80.9
1990	81.2	81.6	82.0	81.9	81.1	81.6	81.4	81.7	81.8	81.7	81.8	80.4	81.5
1991	80.1	81.4	79.6	80.3	81.1	80.9	81.3	81.4	81.1	81.8	81.0	81.0	80.9
1992	79.6	81.3	81.6	82.7	81.9	82.0	81.6	82.0	82.6	82.2	81.5	81.6	81.7
1993	80.2	80.4	80.3	80.7	81.1	81.3	81.1	82.0	82.3	81.4	81.5	81.0	81.1
1994	81.2	81.8	81.4	81.6	81.4	82.1	81.9	82.3	82.1	82.3	82.6	81.1	81.8
1995	81.6	81.7	82.0	80.8	81.8	81.2	81.4	81.9	81.5	81.9	81.3	81.3	81.5
1996	81.0	81.1	81.6	80.6	81.3	80.9	82.0	81.9	81.8	82.2	82.0	81.7	81.5
1997	82.3	81.6	82.7	81.9	81.4	82.0	82.8	81.9	82.0	81.9	82.0	81.2	82.0
1998	81.4	82.2	83.0	83.0	82.5	82.3	81.6	82.0	82.7	82.3	81.8	81.6	82.2
1999	82.0	81.5	81.1	81.5	82.2	81.2	81.8	81.6	81.5	81.5	81.6	81.7	81.6
2000	81.0	81.1	81.9	81.4	82.0	81.8	81.5	82.2	82.7	82.5	82.0	82.0	81.8
2001	81.5	81.8	82.4	82.9	82.7	81.9	82.2	82.5	82.3	82.7	82.0	82.3	82.3
2002	81.7	82.1	82.5	82.4	82.6	82.6	82.5	82.2	82.4	82.1	82.5	81.8	82.3
2003	81.6	81.8	82.9	81.9	82.3	82.3	82.4	82.9	82.2	82.4	83.0	82.1	82.3
2004	82.6	82.3	82.2	82.1	82.0	82.2	82.5	81.9	82.8	83.0	83.4	82.5	82.5
2005	82.2	81.8	81.8	82.3	82.4	82.2	82.3	81.9	82.6	82.4	82.6	82.2	82.2
2006	81.9	82.4	81.6	82.2	82.4	82.5	82.5	82.7	82.7	83.1	83.1	82.7	82.5
2007	82.3	82.0	83.3	82.1	82.6	82.7	82.3	82.5	82.0	82.2	82.2	82.7	82.4
2008	82.8	83.4	82.2	82.1	82.1	82.0	82.0	81.6	82.5	82.1	82.1	81.3	82.2
2009	81.9	81.9	82.3	82.5	83.1	83.5	83.2	83.1	83.0	82.6	81.5	82.6	82.6
2010	83.1	82.9	83.3	84.0	84.3	82.5	82.3	82.7	81.9	81.7	81.7	82.3	82.7
2011	82.5	81.8	81.8	84.1	82.4	82.8	82.3	82.1	82.6	82.0	81.8	82.5	82.4
2012	82.0	82.4	82.4	82.8	83.6	83.7	83.9	83.2	83.7	84.2	83.2	84.0	83.3
2013	83.9	83.2	83.0	83.1	83.4	82.7	82.7	82.6	82.5	82.9	81.5	82.6	82.8
2014	83.1	82.9	83.5	81.8	83.6	83.0	82.5	83.4	83.5	83.2	83.2	83.5	83.1
2015	82.8	83.2	82.4	82.5	82.8	83.4	83.1	83.2	83.2	83.0	84.1	83.6	83.1
POR= 60 YRS	81.2	81.4	81.5	81.5	81.7	81.5	81.5	81.7	81.8	81.7	81.6	81.4	81.5

HEATING DEGREE DAYS (base 65°F) 2015 MAJURO (PKMR)

YEAR	JUL	AUG	SEP	OCT	NOV	DEC	JAN	FEB	MAR	APR	MAY	JUN	TOTAL
1987-88	0	0	0	0	0	0	0	0	0	0	0	0	0
1988-89	0	0	0	0	0	0	0	0	0	0	0	0	0
1989-90	0	0	0	0	0	0	0	0	0	0	0	0	0
1990-91	0	0	0	0	0	0	0	0	0	0	0	0	0
1991-92	0	0	0	0	0	0	0	0	0	0	0	0	0
1992-93	0	0	0	0	0	0	0	0	0	0	0	0	0
1993-94	0	0	0	0	0	0	0	0	0	0	0	0	0
1994-95	0	0	0	0	0	0	0	0	0	0	0	0	0
1995-96	0	0	0	0	0	0	0	0	0	0	0	0	0
1996-97	0	0	0	0	0	0	0	0	0	0	0	0	0
1997-98	0	0	0	0	0	0	0	0	0	0	0	0	0
1998-99	0	0	0	0	0	0	0	0	0	0	0	0	0
1999-00	0	0	0	0	0	0	0	0	0	0	0	0	0
2000-01	0	0	0	0	0	0	0	0	0	0	0	0	0
2001-02	0	0	0	0	0	0	0	0	0	0	0	0	0
2002-03	0	0	0	0	0	0	0	0	0	0	0	0	0
2003-04	0	0	0	0	0	0	0	0	0	0	0	0	0
2004-05	0	0	0	0	0	0	0	0	0	0	0	0	0
2005-06	0	0	0	0	0	0	0	0	0	0	0	0	0
2006-07	0	0	0	0	0	0	0	0	0	0	0	0	0
2007-08	0	0	0	0	0	0	0	0	0	0	0	0	0
2008-09	0	0	0	0	0	0	0	0	0	0	0	0	0
2009-10	0	0	0	0	0	0	0	0	0	0	0	0	0
2010-11	0	0	0	0	0	0	0	0	0	0	0	0	0
2011-12	0	0	0	0	0	0	0	0	0	0	0	0	0
2012-13	0	0	0	0	0	0	0	0	0	0	0	0	0
2013-	0	0	0	0	0	0	0	0	0	0	0	0	0
2013-14	0	0	0	0	0	0	0	0	0	0	0	0	0
2014-15	0	0	0	0	0	0	0	0	0	0	0	0	0
2015-	0	0	0	0	0	0	0	0	0	0	0	0	0

WBAN : 40710

COOLING DEGREE DAYS (base 65°F) 2015 MAJURO (PKMR)

YEAR	JAN	FEB	MAR	APR	MAY	JUN	JUL	AUG	SEP	OCT	NOV	DEC	TOTAL
1986	504	480	480	491	525	491	525	530	510	538	513	489	6076
1987	491	447	501	510	520	489	499	537	510	540	510	508	6062
1988	500	498	529	519	528	494	480	499	474	482	493	487	5983
1989	488	436	492	473	499	488	488	499	493	521	500	534	5911
1990	509	473	532	513	502	506	517	526	511	524	510	487	6110
1991	475	467	460	466	508	487	512	518	491	527	487	502	5900
1992	458	480	522	538	529	516	522	535	533	539	502	521	6195
1993	481	437	480	477	507	497	506	531	525	514	503	503	5961
1994	510	480	517	506	513	516	534	543	517	543	537	504	6220
1995	523	471	533	482	528	493	516	534	501	533	498	513	6125
1996	502	474	521	472	515	483	535	532	511	540	515	526	6126
1997	548	470	557	514	516	514	556	533	516	532	517	510	6283
1998	515	485	566	550	550	527	519	535	539	542	512	520	6360
1999	532	468	506	502	538	492	524	523	499	518	504	526	6132
2000	503	476	532	499	534	512	523	541	537	550	516	533	6256
2001	520	477	549	544	555	514	541	552	527	557	514	545	6395
2002	525	485	555	527	554	536	551	542	527	537	532	528	6399
2003	522	479	562	512	540	527	545	561	524	547	546	540	6405
2004	552	508	541	520	533	526	548	531	542	565	561	551	6478
2005	540	475	529	525	548	524	545	530	534	549	535	540	6374
2006	530	492	527	523	548	532	550	554	539	568	550	556	6469
2007	544	482	575	520	555	536	544	550	514	541	521	555	6437
2008	562	541	542	520	537	517	538	519	534	534	519	510	6373
2009	531	481	543	533	567	562	572	568	547	554	503	552	6513
2010	566	507	573	578	603	531	540	555	516	527	507	542	6545
2011	547	477	528	580	547	541	541	535	532	535	512	553	6428
2012	536	509	549	539	587	566	593	571	566	604	552	594	6766
2013	593	514	566	548	577	540	557	553	532	561	502	555	6598
2014	567	511	582	511	585	548	549	577	562	571	555	579	6697
2015	560	516	545	531	558	558	569	571	552	565	579	586	6690

SNOWFALL (inches) 2015 MAJURO (PKMR)

YEAR	JUL	AUG	SEP	OCT	NOV	DEC	JAN	FEB	MAR	APR	MAY	JUN	TOTAL
1987-88	0.0	0.0	0.0	0.0	0.0	0.0	0.0	0.0	0.0	0.0	0.0	0.0	0.0
1988-89	0.0	0.0	0.0	0.0	0.0	0.0	0.0	0.0	0.0	0.0	0.0	0.0	0.0
1989-90	0.0	0.0	0.0	0.0	0.0	0.0	0.0	0.0	0.0	0.0	0.0	0.0	0.0
1990-91	0.0	0.0	0.0	0.0	0.0	0.0	0.0	0.0	0.0	0.0	0.0	0.0	0.0
1991-92	0.0	0.0	0.0	0.0	0.0	0.0	0.0	0.0	0.0	0.0	0.0	0.0	0.0
1992-93	0.0	0.0	0.0	0.0	0.0	0.0	0.0	0.0	0.0	0.0	0.0	0.0	0.0
1993-94	0.0	0.0	0.0	0.0	0.0	0.0	0.0	0.0	0.0	0.0	0.0	0.0	0.0
1994-95	0.0	0.0	0.0	0.0	0.0	0.0	0.0	0.0	0.0	0.0	0.0	0.0	0.0
1995-96	0.0	0.0	0.0	0.0	0.0	0.0	0.0	0.0	0.0	0.0	0.0	0.0	0.0
1996-97	0.0	0.0	0.0	0.0	0.0	0.0	0.0	0.0	0.0	0.0	0.0	0.0	0.0
1997-98	0.0	0.0	0.0	0.0	0.0	0.0	0.0	0.0	0.0	0.0	0.0	0.0	0.0
1998-99	0.0	0.0	0.0	0.0	0.0	0.0	0.0	0.0	0.0	0.0	0.0	0.0	0.0
1999-00	0.0	0.0	0.0	0.0	0.0	0.0	0.0	0.0	0.0	0.0	0.0	0.0	0.0
2000-01	0.0	0.0	0.0	0.0	0.0	0.0	0.0	0.0	0.0	0.0	0.0	0.0	0.0
2001-02	0.0	0.0	0.0	0.0	0.0	0.0	0.0	0.0	0.0	0.0	0.0	0.0	0.0
2002-03	0.0	0.0	0.0	0.0	0.0	0.0	0.0	0.0	0.0	0.0	0.0	0.0	0.0
2003-04	0.0	0.0	0.0	0.0	0.0	0.0	0.0	0.0	0.0	0.0	0.0	0.0	0.0
2004-05	0.0	0.0	0.0	0.0	0.0	0.0	0.0	0.0	0.0	0.0	0.0	0.0	0.0
2005-06	0.0	0.0	0.0	0.0	0.0	0.0	0.0	0.0	0.0	0.0	0.0	0.0	0.0
2006-07	0.0	0.0	0.0	0.0	0.0	0.0	0.0	0.0	0.0	0.0	0.0	0.0	0.0
2007-08	0.0	0.0	0.0	0.0	0.0	0.0	0.0	0.0	0.0	0.0	0.0	0.0	0.0
2008-09	0.0	0.0	0.0	0.0	0.0	0.0	0.0	0.0	0.0	0.0	0.0	0.0	0.0
2009-10	0.0	0.0	0.0	0.0	0.0	0.0	0.0	0.0	0.0	0.0	0.0	0.0	0.0
2010-11	0.0	0.0	0.0	0.0	0.0	0.0	0.0	0.0	0.0	0.0	0.0	0.0	0.0
2011-12	0.0	0.0	0.0	0.0	0.0	0.0	0.0	0.0	0.0	0.0	0.0	0.0	0.0
2012-13	0.0	0.0	0.0	0.0	0.0	0.0	0.0	0.0	0.0	0.0	0.0	0.0	0.0
2013-	0.0	0.0	0.0	0.0	0.0	0.0	0.0	0.0	0.0	0.0	0.0	0.0	0.0
2013-14	0.0	0.0	0.0	0.0	0.0	0.0	0.0	0.0	0.0	0.0	0.0	0.0	0.0
2014-15	0.0	0.0	0.0	0.0	0.0	0.0	0.0	0.0	0.0	0.0	0.0	0.0	0.0
2015-	0.0	0.0	0.0	0.0	0.0	0.0	0.0	0.0	0.0	0.0	0.0	0.0	0.0
POR= 61 YRS	0.0	0.0	0.0	0.0	0.0	0.0	0.0	0.0	0.0	0.0	0.0	0.0	0.0

WBAN : 40710

REFERENCE NOTES :

<p>PAGE 1: THE TEMPERATURE GRAPH SHOWS NORMAL MAXIMUM AND NORMAL MINIMUM DAILY TEMPERATURES (SOLID CURVES) AND THE ACTUAL DAILY HIGH AND LOW TEMPERATURES (VERTICAL BARS).</p> <p>PAGE 2 AND 3: H/C INDICATES HEATING AND COOLING DEGREE DAYS. RH INDICATES RELATIVE HUMIDITY W/O INDICATES WEATHER AND OBSTRUCTIONS S INDICATES SUNSHINE. PR INDICATES PRESSURE. CLOUDINESS ON PAGE 3 IS THE SUM OF THE CEILOMETER AND SATELLITE DATA NOT TO EXCEED EIGHT EIGHTHS(OKTAS).</p> <p>GENERAL: T INDICATES TRACE PRECIPITATION, AN AMOUNT GREATER THAN ZERO BUT LESS THAN THE LOWEST REPORTABLE VALUE. + INDICATES THE VALUE ALSO OCCURS ON EARLIER DATES. BLANK ENTRIES DENOTE MISSING OR UNREPORTED DATA. ASOS INDICATES AUTOMATED SURFACE OBSERVING SYSTEM. PM INDICATES THE LAST DAY OF THE PREVIOUS MONTH. POR (PERIOD OF RECORD) BEGINS WITH THE JANUARY DATA MONTH AND IS THE NUMBER OF YEARS USED TO COMPUTE THE MEAN. INDIVIDUAL MONTHS WITHIN THE POR MAY BE MISSING. WHEN THE POR FOR A NORMAL IS LESS THAN 30 YEARS, THE NORMAL IS PROVISIONAL AND IS BASED ON THE NUMBER OF YEARS INDICATED. 0.* OR * INDICATES THE VALUE OR MEAN-DAYS-WITH IS BETWEEN 0.00 AND 0.05. CLOUDINESS FOR ASOS STATIONS DIFFERS FROM THE NON-ASOS OBSERVATION TAKEN BY A HUMAN OBSERVER. ASOS STATION CLOUDINESS IS BASED ON TIME-AVERAGED CEILOMETER DATA FOR CLOUDS AT OR BELOW 12,000 FEET CLEAR INDICATES 0 - 2 OKTAS, PARTLY CLOUDY INDICATES 3 - 6 OKTAS, AND CLOUDY INDICATES 7 OR 8 OKTAS.</p> <p>GENERAL CONTINUED: WIND DIRECTION IS RECORDED IN TENS OF DEGREES (2 DIGITS) CLOCKWISE FROM TRUE NORTH. "00" INDICATES CALM. "36" INDICATES TRUE NORTH. RESULTANT WIND IS THE VECTOR AVERAGE OF THE SPEED AND DIRECTION. AVERAGE TEMPERATURE IS THE SUM OF THE MEAN DAILY MAXIMUM AND MINIMUM TEMPERATURE DIVIDED BY 2. SNOWFALL DATA COMPRISE ALL FORMS OF FROZEN</p>	<p>PRECIPITATION, INCLUDING HAIL. A HEATING (COOLING) DEGREE DAY IS THE DIFFERENCE BETWEEN THE AVERAGE DAILY TEMPERATURE AND 65 F. DRY BULB IS THE TEMPERATURE OF THE AMBIENT AIR. DEW POINT IS THE TEMPERATURE TO WHICH THE AIR MUST BE COOLED TO ACHIEVE 100 PERCENT RELATIVE HUMIDITY. WET BULB IS THE TEMPERATURE THE AIR WOULD HAVE IF THE MOISTURE CONTENT WAS INCREASED TO 100 PERCENT RELATIVE HUMIDITY. ON JULY 1, 1996, THE NATIONAL WEATHER SERVICE BEGAN USING THE "METAR" OBSERVATION CODE THAT WAS ALREADY EMPLOYED BY MOST OTHER NATIONS OF THE WORLD. THE MOST NOTICEABLE DIFFERENCE IN THIS ANNUAL PUBLICATION WILL BE THE CHANGE IN UNITS FROM TENTHS TO EIGHTHS(OKTAS) FOR REPORTING THE AMOUNT OF SKY COVER. STATION HISTORY STOPPED WITH THE 2009 ANNUAL. IF YOU NEED STATION HISTORY INFORMATION GO TO "Historical Observing Metadata Repository", URL IS: http://www.ncdc.noaa.gov/homr/ SNOWFALL STOPPED MONTH & YEAR INDICATED ABOVE. NO FURTHER YEARS INCLUDED UNLESS RESTARTED.</p> <p>NOTE: The "Period of Record:(POR)" for all "averages" is based on "Summary of the Day First Order Station" and "Cooperative Summary of the Day" archives.</p>
---	---

2015 MAJURO PACIFIC (PKMR)

The station at Majuro is located on the southeastern end of the Majuro Atoll. This atoll is approximately 160 square miles in area with a lagoon of about 150 square miles. The lagoon is oblong, 22 miles long and about 4 miles wide. Dalap Island, on which the station is located, is oriented roughly east-west.

The climate of Majuro is predominately a trade-wind climate with the trade winds prevailing throughout the year. Tropical storms are very rare.

Minor storms of the easterly wave type are quite common from March to April and October to November. The trades are frequently locally interrupted during the summer months by the movement of the zone of intertropical convergence across the area.

Rainfall is heavy, with the wettest months being October and November. Precipitation is generally of the shower type, however, continuous rain is not uncommon.

One of the outstanding features of the climate is the extremely consistent temperature regime. The range between the coolest and the warmest months averages less than 1 degree. The average daily range is less than 9 degrees. Nighttime minima are generally 2-4 degrees warmer than the average daily minimum because lowest temperatures usually occur during heavy showers in the daytime.

Skies at Majuro are quite cloudy. Cumuliform clouds are predominant but altostratus-altocumulus and cirriform clouds are also present most of the time.

Station History

MAJURO, RM

NAME	Begin Date	End Date	Latitude	Longitude	Elevation Feet	Relocation	Platform
MAJURO WBAS AP	1955-01-01	Present	7° 3'	171° 16'	10		COOP

Element History

Element	Begin Date	End Date	Frequency	Time Of Observation	Equipment *	Equipment * Modifications	Equipment Exposure
TEMP	1985-10-04	Present	DAILY	2400			
PRECIP	1985-10-04	Present	DAILY	2400	TB	RCRD	
PRECIP	1985-10-04	Present	HOURLY	2400	TB	RCRD	

* For explanation of codes and abbreviations see Station Metadata link below.

Other Station Information can be found at:

ASOS Implementation by NWS: <http://www.nws.noaa.gov/ops2/Surface/asosimplementation.htm>

Station Metadata website: <http://www.ncdc.noaa.gov/homr>

INQUIRES/COMMENTS CALL: (828) 271-4800, option 2

Fax Number : (828) 271-4876

TDD : (828) 271-4010

Email : ncdc.orders@noaa.gov

NOAA/National Centers for Environmental Information

Attn: User Engagement & Services Branch

151 Patton Avenue

Asheville, NC 28801-5001

Visit our Web Site for other weather data: www.ncdc.noaa.gov